

## Kirkalocka Drilling Nears Following Field Success

### HIGHLIGHTS

- Initial ~2,200m RC drilling program planned across four priority gold targets, with drilling targeted to commence following receipt and interpretation of soil assay results.
- Systematic evaluation of multiple gold targets surrounding the Kirkalocka Gold Mine continues to support Catalina's Mid-West Gold growth strategy
- Geological mapping and historical rock-chip sampling confirm encouraging gold mineralisation across multiple target areas.
- Historical rock-chip results at Avis include up to 9.89g/t Au.
- Historical drilling<sup>1</sup> confirms gold mineralisation at Highway and 2 Mile Bore, including 6m @ 1.79g/t Au from 42m and 1m @ 4.66g/t Au from 34m.

Catalina Resources Limited (ASX: CTN) is pleased to announce an advancement of exploration activities at its 100%-owned Kirkalocka Gold Project in Western Australia's Mid-West region.

Following the recent acquisition of the Project, Catalina has rapidly progressed from historical data compilation to active field exploration, with reconnaissance programs completed across four priority gold prospects: Highway, Capra, Avis and 2 Mile Bore.

An initial RC drilling program of approximately 2,200 metres has been planned across the four priority targets and will be finalised following receipt and interpretation of the soil assay results.

### Executive Director, Ross Cotton, commented:

*“Kirkalocka is an important part of our Mid-West Gold strategy of systematically consolidating and advancing a district-scale gold inventory surrounding the Kirkalocka processing facility. With multiple priority targets located adjacent to an established gold mine and processing infrastructure, we believe the Project offers significant exploration upside and a compelling opportunity to build value through exploration success.*

*Our priority has been to rapidly transition the Project from historical review to drill-ready targets, and we have made excellent progress in a short period of time.*

*The field reconnaissance work combined with historical assay data have delineated priority targets, this work has allowed us to confidently prioritise drill targets across Highway, Capra, Avis and 2 Mile Bore.*

*We're keen to get drill rigs turning at Kirkalocka as soon as possible. The work completed to date has put us in a strong position to move rapidly into drilling, and we expect that to occur in the near-term following completion of the current soil program, receipt of the and assay results.”*

## Kirkalocka Project Background

The Kirkalocka Gold Project is located within the southern Wydgee–Meekatharra Greenstone Belt and includes tenure immediately adjacent to the Kirkalocka Gold Mine, which hosts a published Mineral Resource of approximately 240,000 ounces of gold. The Project is also located adjacent (Figure 1) to the 2.0Mtpa Kirkalocka Gold Processing Plant, which is being advanced towards recommencement by Gylden Resources Limited.

Catalina Resources has rapidly advanced exploration activities at Kirkalocka completing initial reconnaissance across four priority gold targets: Highway, Capra, Avis and 2 Mile Bore (Figure 1). The program included geological mapping, prospect reviews and rock-chip sampling to assess the prospectivity of each target and identify opportunities for near-term drill testing.

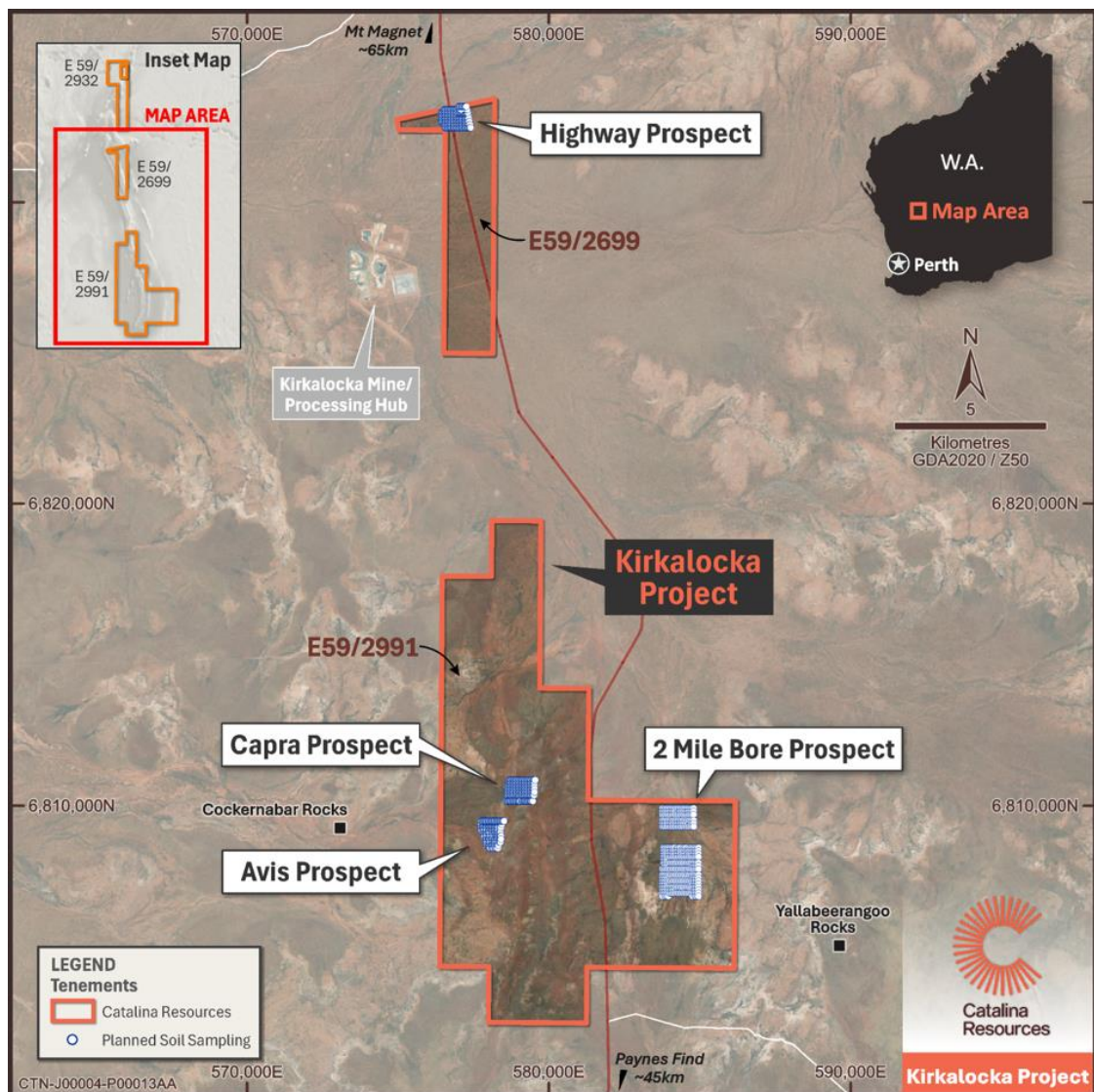


Figure 1: regional map showing location of soil program at each priority prospect

## Highway Prospect

The Highway Target comprises a fold closure interpreted from airborne magnetic data and supported by geological mapping (Figure 2). An amphibolite unit forms the core of the fold structure and, together with minor interbedded banded iron horizons represents the primary target horizon.

Historical drilling has confirmed the presence of gold mineralisation associated with this amphibolite sequence.

The target is characterised by a magnetic anomaly associated with a banded iron formation (BIF) within the fold closure. Previous drilling<sup>1</sup> returned encouraging gold intersections, including:

- **6m @ 1.38g/t Au** from 27m in hole KKA795; and
- **6m @ 1.79g/t Au** from 42m in hole KKA796.

These drillholes are located on either side of the Great Northern Highway. Gold anomalism is associated with ferruginous saprolite developed from weathered banded iron formation units, highlighting the potential for structurally controlled gold mineralisation along the fold axis within the target area.

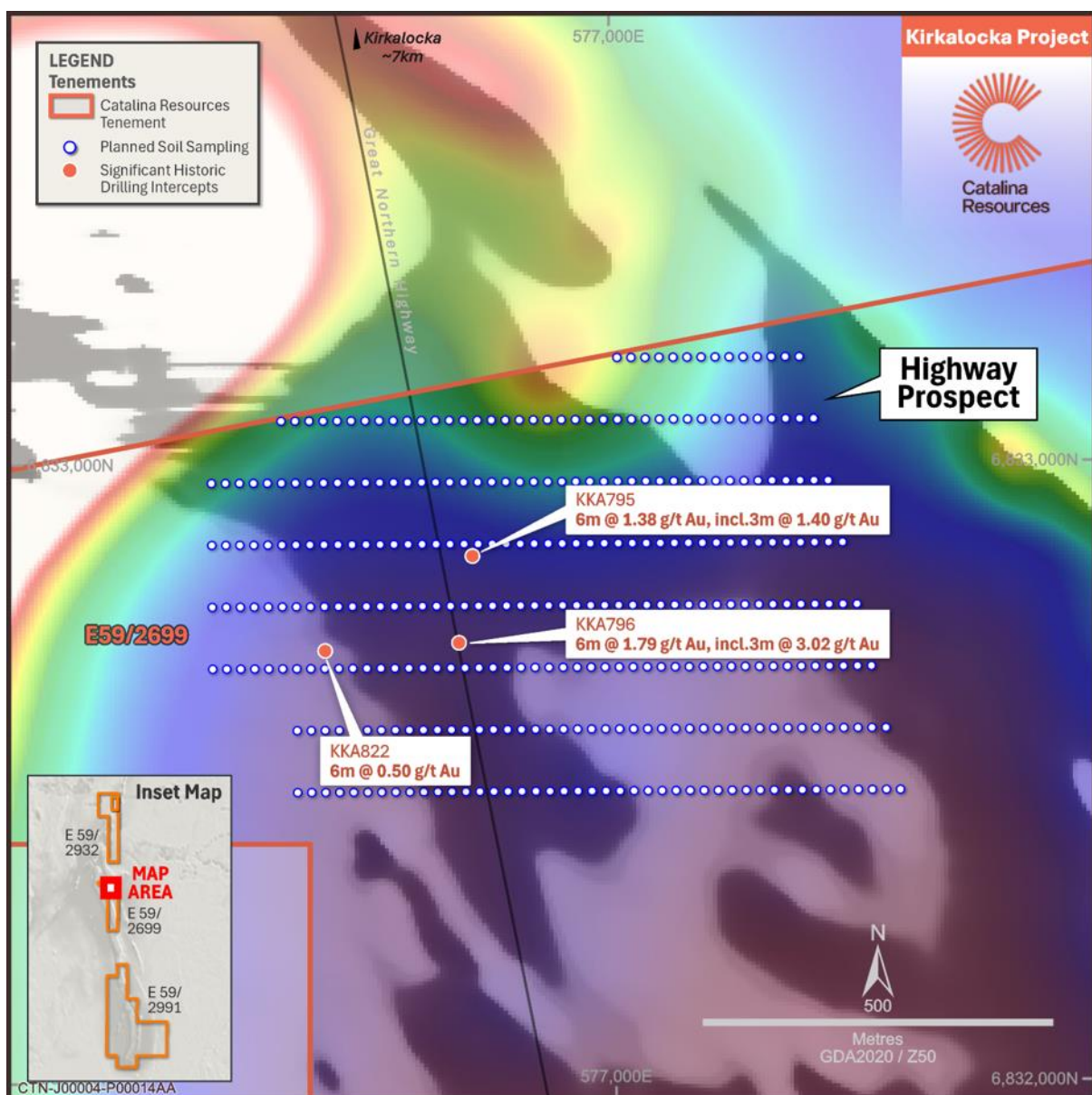


Figure 2: Highway Prospect Magnetics highlighting the interpreted fold closure and soil sample locations

## Capra

The Capra target lies on the northwestern flank of the Wydgee syncline.

Previous soil sampling recovered elevated gold values close to a possible offset zone in the syncline where steeply dipping banded iron and chert formations underlie mafic volcanic units. Brecciated and pitted quartz and chert were recovered in rock chip samples from close to the contact between the volcanics and the chemical sediments. This suggests that mineralised fluids may possibly have intruded along the brittle/ductile contact close to the offset zone in the syncline. Major north-south faulting controlling the western flank of the syncline lies about 200 metres to the west of the prospect which could represent an important conduit for mineralised fluids.

While historical drilling has been limited, geological mapping and historical soil geochemistry have identified several compelling targets that warrant systematic follow-up. Further close-spaced soil sampling is underway to better define priority targets, with the results to guide the initial RC drilling program.

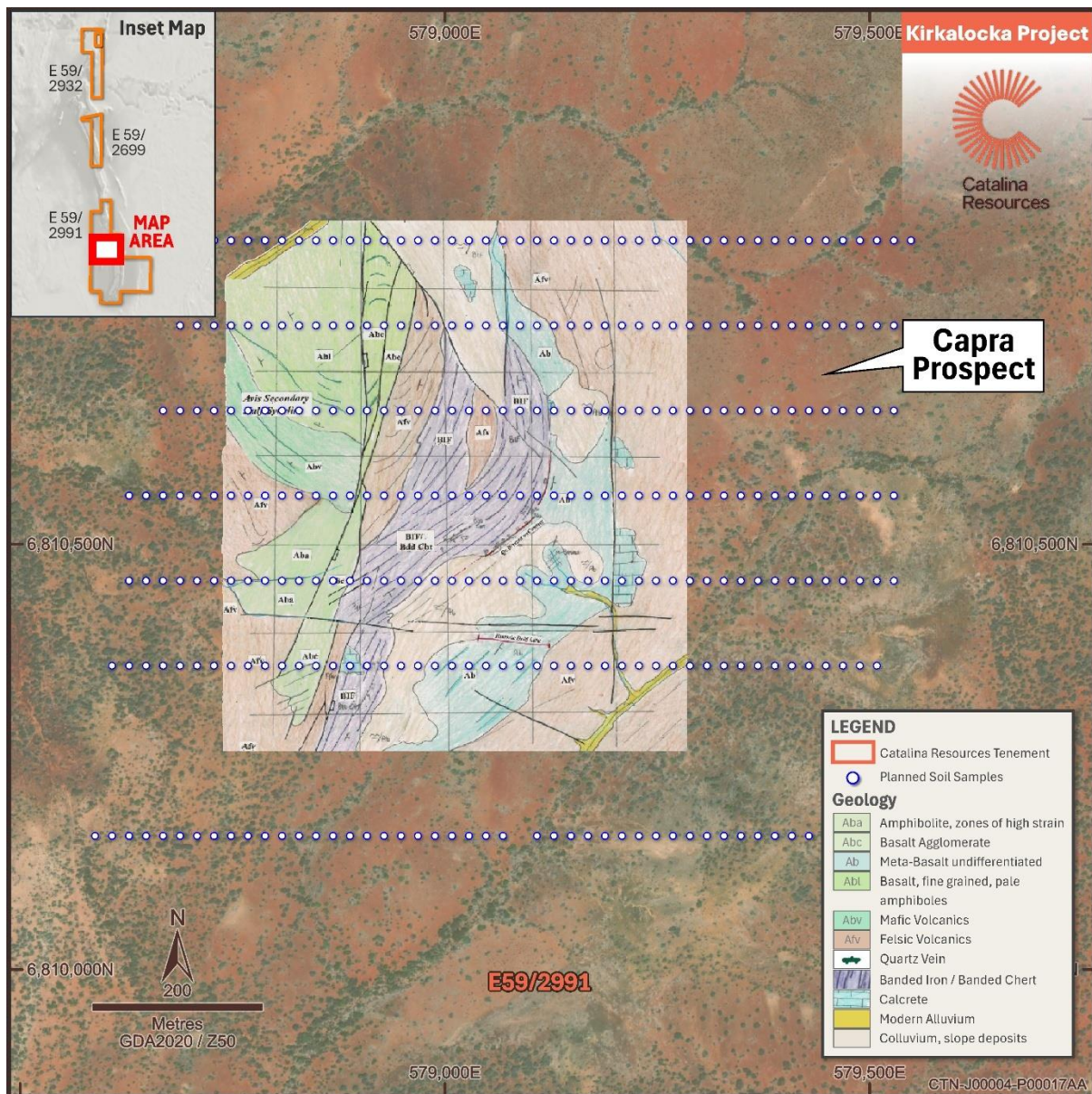


Figure 3: Local geological mapping at the Capra prospect and location of planned soils.

## Avis

The Avis Target is underlain predominantly by high-strain amphibolite, basalt agglomerate and felsic volcanic units, with a north-south oriented banded iron formation forming the eastern ridge of the prospect area (Figure 4). Gabbroic units occur along the eastern margin and numerous calcrete occurrences have also been mapped.

Several historical workings occur within basalt-hosted quartz veins, indicating previous exploration and mining activity. Structurally, the prospect is characterised by north-south trending wrench-related structures and a series of east-west and east-northeast fault splays, providing favourable pathways for fluid movement and gold deposition.

A major barren quartz vein follows the regional NNE-SSW structural trend along the eastern boundary of the prospect, while transported cover obscures portions of the western and southwestern areas.

Historic rock chip sampling by Mount Magnet South NL (ASX:MUM) in the vicinity of the historical workings returned significant gold anomalism, including:

- **9.89g/t Au** (sample 17959);
- **2.59g/t Au** (sample 18955);
- **2.08g/t Au** (sample 17954); and
- **1.18g/t Au** (sample 17956)

Annexure 1 contains full table of rock chip results and location details.

These results support the prospectivity of the Avis Target and warrant further systematic exploration.

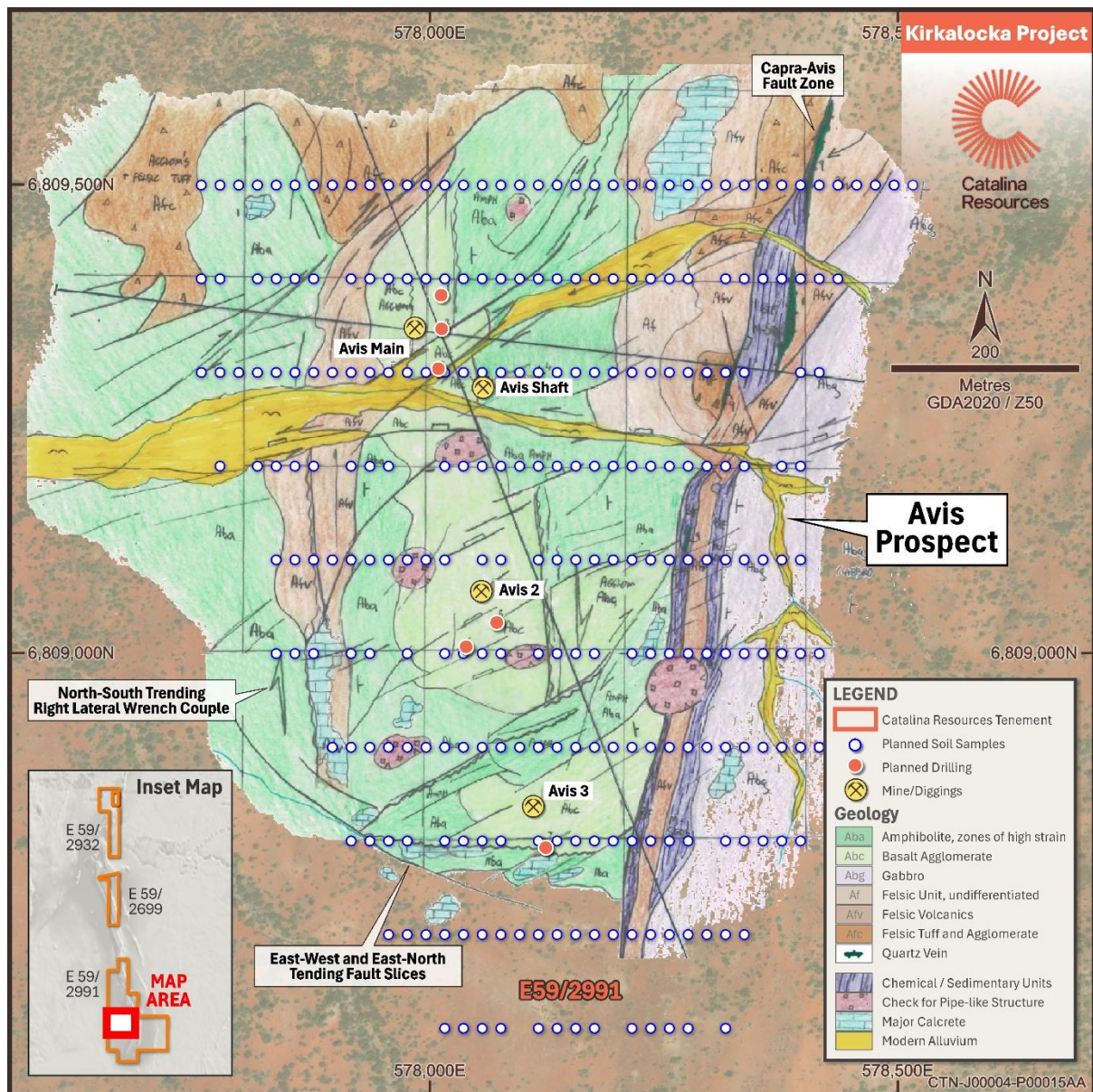


Figure 4: Local geological mapping at the Avis prospect including planned soils and preliminary drill targets.

## 2 Mile Bore prospect

The T10 prospect is largely covered by transported material with limited outcrop exposure. The prospect is dominated by a major north-south trending structure, the Cuddingwarra Shear, which separates basaltic and felsic volcanic units from migmatites, granitic and gabbroic rocks to the east (Figure 5).

The primary exploration focus is the prospective basalt-amphibolite sequence adjacent to the main shear corridor, particularly where northeast-southwest-trending faults offset the main structure. These structural positions are considered favourable sites for gold mineralisation.

Historical drilling within the broader target area has intersected gold mineralisation associated with amphibolite and basalt units. Reconnaissance mapping also identified coarse-grained gabbro exposed along two traverses. Previous drilling<sup>1</sup> within medium-grained gabbro in drillhole CWRC-6807800-002 returned:

- 1m @ 4.66g/t Au from 34m; and

- 1m @ 0.64g/t Au from 30m.

These results demonstrate the potential for gold mineralisation within both mafic lithologies and structurally controlled settings adjacent to the Cuddingwarra Shear.

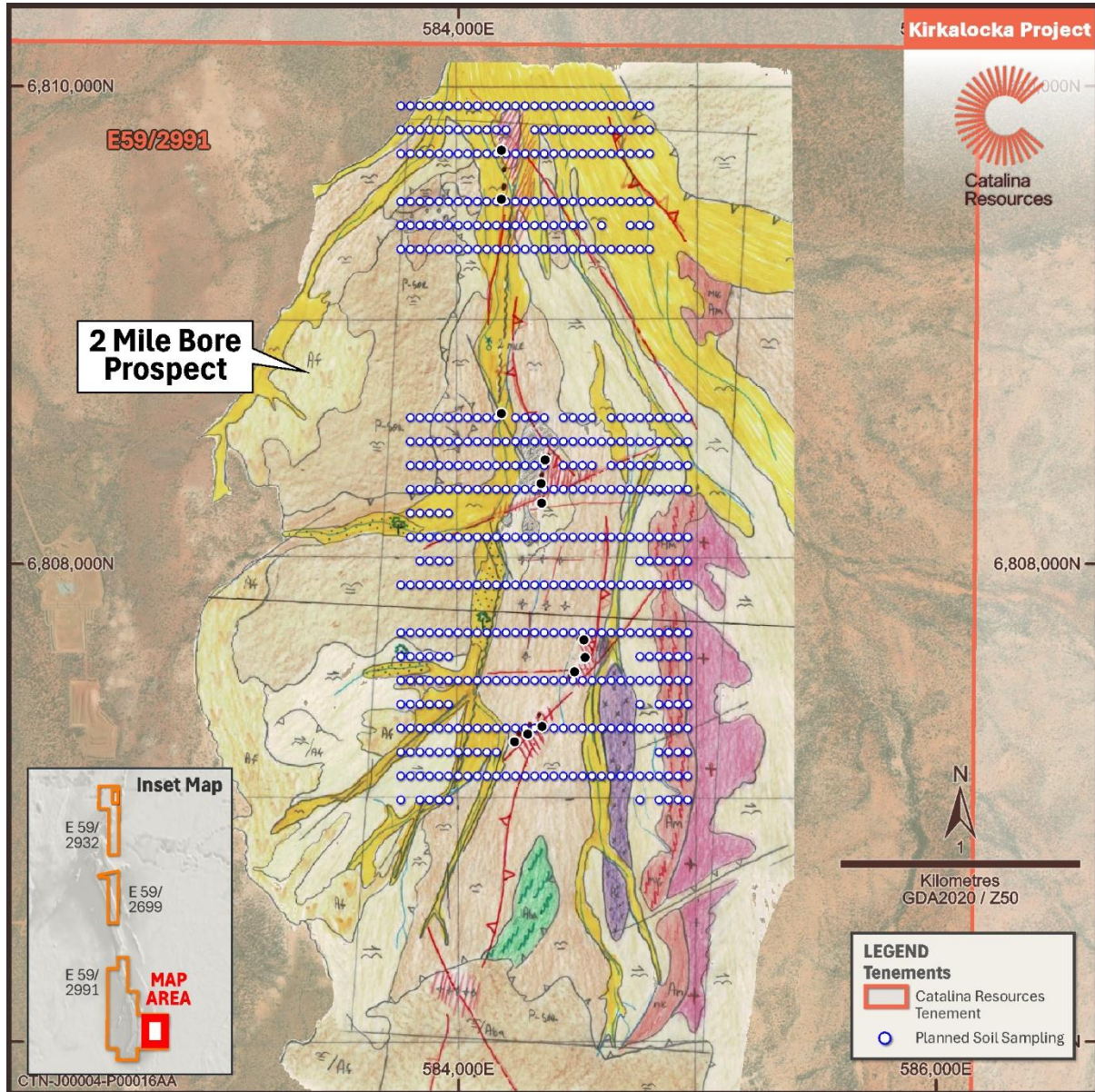


Figure 5: Local geological mapping at the 2 Mile Bore prospect including planned soils and preliminary drill targets.

### Next Steps

Catalina is rapidly progressing the Kirkalocka Gold Project towards drilling. The Company has completed its historical technical review, target generation and reconnaissance field program with an initial ~2,200m RC drilling program now planned.

Soil sampling and heritage assessment are currently underway. Results from the soil program will be integrated with historical drilling, geological mapping and geophysical datasets to finalise drill hole locations with RC drilling expected to commence in the near-term.

## **Contacts**

### **Investors / Shareholders**

Ross Cotton

Executive Director

T: +61 (0)8 6188 8181

[Click Here](#) leave a question about this announcement and to visit our Investor Hub

**This announcement has been authorised for release by the Executive Director, Ross Cotton.**

## **References (ASX)**

This Report contains information extracted from ASX market announcements reported in accordance with the 2012 edition of the “Australasian Code for Reporting of Exploration Results, Mineral Resources and Ore Reserves” (“2012 JORC Code”). Further details (including 2012 JORC Code reporting tables where applicable) of exploration results referred to in this announcement can be found in the following announcements lodged on the ASX:

<sup>1</sup>Refer CTN ASX Announcement 15 June 2026 [ASX:CTN - Significant Historic Gold Results Across Mid-West Portfolio](#)

## **COMPETENT PERSONS STATEMENT**

Newly reported information in this announcement that relates to exploration activities is based on information compiled by Dr Nishka Piechocka, PhD, Vice President of the Australian Institute of Geoscientists (AIG) and a full-time employee of Catalina Resources Limited. Dr Piechocka has sufficient experience relevant to the style of mineralisation and type of deposit under consideration and to the activity being undertaken to qualify as a Competent Person as defined in the 2012 Edition of the Australasian Code for Reporting of Exploration Results, Mineral Resources and Ore Reserves (JORC Code). Dr Piechocka consents to the inclusion in the report of the matters based on her information in the form and context in which it appears.

The Company confirms that it is not aware of any new information or data that materially affects the information included in the original market announcement and, in the case of estimates of Mineral Resources or Ore Reserves, that all material assumptions and technical parameters underpinning the estimates in the relevant market announcement continue to apply and have not materially changed.

The Company confirms that the form and context in which the Competent Person’s findings are presented have not been materially modified from the original market announcement.

## **FORWARD-LOOKING STATEMENTS**

This announcement contains forward-looking statements that are subject to a range of risks and uncertainties. These statements relate to the Company's expectations, intentions, or strategies regarding the future. These statements can be identified by the use of words like "anticipate", "believe", "intend", "estimate", "expect", "may", "plan", "project", "will", "should", "seek" and similar words or expressions containing same. These forward-looking statements reflect the Company's views and assumptions with respect to future events as of the date of this release and are subject to a variety of unpredictable risks, uncertainties, and other unknowns. Actual and future results and trends could differ materially from those set forth in such statements due to various factors, many of which are beyond our ability to control or predict. These include, but are not limited to, risks or uncertainties associated with the acquisition and divestment of projects, joint venture and other contractual risks, metal prices, exploration, development and operating risks, competition, production risks, sovereign risks, regulatory risks including environmental regulation and liability and potential title disputes, availability and terms of capital and general economic and business conditions.

Given these uncertainties, no one should place undue reliance on any forward-looking statements attributable to the Company, or any of its affiliates or persons acting on its behalf. Subject to any continuing obligations under applicable law the Company disclaims any obligation or undertaking to disseminate any updates or revisions to any forward-looking statements in this announcement to reflect any change in expectations in relation to any forward-looking statements or any change in events, conditions or circumstances on which any such statement is based.

## **ABOUT CATALINA RESOURCES LIMITED**

Catalina Resources Limited is an Australian diversified mineral exploration and mine development company whose vision is to create shareholder value through the successful exploration of prospective gold, base metal, lithium and iron ore projects and the development of these projects into production.



## APPENDIX A:

### Rock chip assay results

Sample_ID	Easting	Northing	Sample Type	Date	Datum	Zone	Au g/t
17951	577986	6809373	Rock	2013	GDA94	50	0.01
17952	577987	6809372	Rock	2013	GDA94	50	0.75
17953	577990	6809367	Rock	2013	GDA94	50	0.06
17954	577988	6809362	Rock	2013	GDA94	50	2.08
17955	577987	6809357	Rock	2013	GDA94	50	2.59
17956	577988	6809353	Rock	2013	GDA94	50	1.18
17957	577931	6809339	Rock	2013	GDA94	50	<0.01
17958	578062	6809070	Rock	2013	GDA94	50	0.06
17959	578066	6809074	Rock	2013	GDA94	50	9.89



## JORC Code, 2012 Edition – Table 1 report template

### Section 1 Sampling Techniques and Data

(Criteria in this section apply to all succeeding sections.)

Criteria	JORC Code explanation	Explanation
Sampling techniques	<ul style="list-style-type: none"> <li>Nature and quality of sampling (eg cut channels, random chips, or specific specialised industry standard measurement tools appropriate to the minerals under investigation, such as down hole gamma sondes, or handheld XRF instruments, etc). These examples should not be taken as limiting the broad meaning of sampling.</li> </ul>	<p>Rock-chip samples were collected from outcropping or sub cropping rock during surface reconnaissance exploration. Samples comprised individual rock-chip specimens collected from locations considered prospective for gold mineralisation. Gold analysis was undertaken by 40 g fire assay with AAS finish (FA40AAS).</p>
	<ul style="list-style-type: none"> <li>Include reference to measures taken to ensure sample representivity and the appropriate calibration of any measurement tools or systems used.</li> </ul>	
	<ul style="list-style-type: none"> <li>Aspects of the determination of mineralization that are Material to the Public Report.</li> </ul>	
	<ul style="list-style-type: none"> <li>In cases where ‘industry standard’ work has been done this would be relatively simple (eg ‘reverse circulation drilling was used to obtain 1 m samples from which 3 kg was pulverised to produce a 30 g charge for fire assay’). In other cases more explanation may be required, such as where there is coarse gold that has inherent sampling problems. Unusual commodities or mineralization types) may warrant disclosure detailed information.</li> </ul>	

Drilling techniques	<ul style="list-style-type: none"> <li>Drill type (eg core, reverse circulation, open-hole hammer, rotary air blast, auger, Bangka, sonic, etc) and details (eg core diameter, triple or standard tube, depth of diamond tails, face-sampling bit or other type, whether core is oriented and if so, by what method, etc).</li> </ul>	No drilling was undertaken. Results reported are from surface rock-chip sampling only.
Drill sample recovery	<ul style="list-style-type: none"> <li>Method of recording and assessing core and chip sample recoveries and results assessed.</li> </ul>	Not applicable
	<ul style="list-style-type: none"> <li>Measures taken to maximise sample recovery and ensure representative nature of the samples.</li> </ul>	
	<ul style="list-style-type: none"> <li>Whether a relationship exists between sample recovery and grade and whether sample bias may have occurred due to preferential loss/gain of fine/coarse material.</li> </ul>	
Logging	<ul style="list-style-type: none"> <li>Whether core and chip samples have been geologically and geotechnically logged to a level of detail to support appropriate Mineral Resource estimation, mining studies and metallurgical studies.</li> </ul>	Not applicable
	<ul style="list-style-type: none"> <li>Whether logging is qualitative or quantitative in nature. Core (or costean, channel, etc) photography.</li> </ul>	
	<ul style="list-style-type: none"> <li>The total length and percentage of the relevant intersections logged.</li> </ul>	
Sub-sampling techniques and sample preparation	<ul style="list-style-type: none"> <li>If core, whether cut or sawn and whether quarter, half or all core taken.</li> </ul>	<p>The historical reports do not describe sample preparation procedures.</p> <p>Samples were submitted to KALASSAY Laboratories for analysis by 40 g fire assay with AAS finish.</p>
	<ul style="list-style-type: none"> <li>If non-core, whether riffled, tube sampled, rotary split, etc and whether sampled wet or dry.</li> </ul>	
	<ul style="list-style-type: none"> <li>For all sample types, the nature, quality and appropriateness of the sample preparation technique.</li> </ul>	



	<ul style="list-style-type: none"> <li>Quality control procedures adopted for all sub-sampling stages to maximise representivity of samples.</li> </ul>	
	<ul style="list-style-type: none"> <li>Measures taken to ensure that the sampling is representative of the in situ material collected, including for instance results for field duplicate/second-half sampling.</li> </ul>	
	<ul style="list-style-type: none"> <li>Whether sample sizes are appropriate to the grain size of the material being sampled.</li> </ul>	
Quality of assay data and laboratory tests	<ul style="list-style-type: none"> <li>The nature, quality and appropriateness of the assaying and laboratory procedures used and whether the technique is considered partial or total.</li> </ul>	Gold was determined by FA40AAS (40 g fire assay with AAS finish). Laboratory QA/QC records indicate certified reference materials and blank samples were inserted during analysis. A certified standard (ST463) returned 9.57 ppm Au and the blank returned <0.01 ppm Au, indicating acceptable laboratory performance
	<ul style="list-style-type: none"> <li>For geophysical tools, spectrometers, handheld XRF instruments, etc, the parameters used in determining the analysis including instrument make and model, reading times, calibrations factors applied and their derivation, etc.</li> </ul>	
	<ul style="list-style-type: none"> <li>Nature of quality control procedures adopted (eg standards, blanks, duplicates, external laboratory checks) and whether acceptable levels of accuracy (ie lack of bias) and precision have been established.</li> </ul>	
Verification of sampling and assaying	<ul style="list-style-type: none"> <li>The verification of significant intersections by either independent or alternative company personnel.</li> </ul>	
	<ul style="list-style-type: none"> <li>The use of twinned holes.</li> </ul>	
	<ul style="list-style-type: none"> <li>Documentation of primary data, data entry procedures, data verification, data storage (physical and electronic) protocols.</li> </ul>	
	<ul style="list-style-type: none"> <li>Discuss any adjustment to assay data.</li> </ul>	



Location of data points	<ul style="list-style-type: none"> <li>Accuracy and quality of surveys used to locate drill holes (collar and down-hole surveys), trenches, mine workings and other locations used in Mineral Resource estimation.</li> </ul>	Sample locations were recorded using handheld GPS in GDA94, MGA Zone 50. Coordinates are reported in metres.
	<ul style="list-style-type: none"> <li>Specification of the grid system used.</li> </ul>	
	<ul style="list-style-type: none"> <li>Quality and adequacy of topographic control.</li> </ul>	
Data spacing and distribution	<ul style="list-style-type: none"> <li>Data spacing for reporting of Exploration Results.</li> </ul>	<p>Rock-chip sampling was reconnaissance in nature and was not undertaken on a systematic grid.</p> <p>Sample spacing is irregular and appropriate only for identifying areas of anomalous mineralisation.</p>
	<ul style="list-style-type: none"> <li>Whether the data spacing and distribution is sufficient to establish the degree of geological and grade continuity appropriate for the Mineral Resource and Ore Reserve estimation procedure(s) and classifications applied.</li> </ul>	
	<ul style="list-style-type: none"> <li>Whether sample compositing has been applied.</li> </ul>	
Orientation of data in relation to geological structure	<ul style="list-style-type: none"> <li>Whether the orientation of sampling achieves unbiased sampling of possible structures and the extent to which this is known, considering the deposit type.</li> </ul>	Rock-chip sampling was targeting historic workings which was targeting a mineralised vein.
	<ul style="list-style-type: none"> <li>If the relationship between the drilling orientation and the orientation of key mineralised structures is considered to have introduced a sampling bias, this should be assessed and reported if material.</li> </ul>	
Sample security	<ul style="list-style-type: none"> <li>The measures taken to ensure sample security.</li> </ul>	No information regarding sample security procedures has been located.
Audits or reviews	<ul style="list-style-type: none"> <li>The results of any audits or reviews of sampling techniques and data.</li> </ul>	No information regarding independent audits or reviews of sampling, assaying or database management has been located

## Section 2 Reporting of Exploration Results

(Criteria listed in the preceding section also apply to this section.)

Mineral tenement and land tenure status	<ul style="list-style-type: none"> <li>Type, reference name/number, location and ownership including agreements or material issues with third parties such as joint ventures, partnerships, overriding royalties, native title interests, historical sites, wilderness or national park and environmental settings.</li> </ul>	<p>The historical exploration results reported herein were completed within tenements comprising the Kirkalocka Project, located within the Murchison region of Western Australia. Historical exploration was undertaken by previous operators, including Equigold NL, Mount Magnet South Limited and Minjar Gold Pty Ltd. The historical exploration programmes were conducted on granted tenements reported to be in good standing at the time of exploration.</p> <p>The Company currently holds the relevant project tenure for tenements E 59/2932, E 59/2699, E 59/2991, and is not aware of any material environmental, heritage, native title or other impediments to undertaking exploration activities within the project area.</p>
	<ul style="list-style-type: none"> <li>The security of the tenure held at the time of reporting along with any known impediments to obtaining a licence to operate in the area.</li> </ul>	



<p>Exploration done by other parties</p>	<ul style="list-style-type: none"> <li>Acknowledgment and appraisal of exploration by other parties.</li> </ul>	<p>Historical exploration within the Kirkalocka Project area has been undertaken by several previous explorers, including Equigold NL, Mount Magnet South Limited and Minjar Gold Pty Ltd.</p> <p>Exploration activities completed across the project area include geological mapping, regolith interpretation, soil and lag geochemical sampling, aircore drilling, reverse circulation (RC) drilling and geological logging. Historical exploration programmes were primarily designed to assess the gold potential of prospective greenstone belt stratigraphy, including banded iron formation (BIF), mafic volcanic and ultramafic units concealed beneath varying depths of transported cover.</p> <p>The historical datasets reviewed by the Company comprise drill collar records, geological logging, downhole geochemistry and surface geochemical sampling data. These datasets provide valuable geological and geochemical information that supports ongoing target generation, geological interpretation and prioritisation of future exploration activities.</p> <p>The Company has compiled and reviewed publicly available historical exploration data from WAMEX reports, historical databases and associated technical documentation.</p> <p>Historical exploration results referred to in this announcement have not been independently verified by the Company and should be regarded as historical in nature pending further validation work.</p>
--	---	--



Geology	<ul style="list-style-type: none"> <li>· Deposit type, geological setting and style of mineralization.</li> </ul>	<p>The Kirkalocka project lies on the eastern margin of the Murchison granite-greenstone province and specifically at the southern end of the Wydgee - Meekatharra Greenstone Belt.</p> <p>In the vicinity of the project, the greenstone belt varies in thickness from 2.0 to 5.5 kilometres in width. The belt is elongate and trends in a north south direction. Lithologies of the Luke Creek Group which include the Windanning, Gabanintha, Golconda and Murrouli Basalt are present.</p> <p>These formations include felsic and mafic volcanics and banded iron lithologies. Felsic intrusives are also observed close to the belt boundaries. The orientation of these rocks is roughly parallel to the marginal contacts. In this region, the belt has undergone contact metamorphism to greenschist-amphibolite facies. The Mt. Magnet Shear runs parallel to the eastern margin along the length of the belt.</p> <p>The geological interpretation presented is based on historical exploration information and has not been independently validated by Catalina Resources.</p>
Drill hole Information	<ul style="list-style-type: none"> <li>· A summary of all information material to the understanding of the exploration results including a tabulation of the following information for all Material drill holes: <ul style="list-style-type: none"> <li>o easting and northing of the drill hole collar</li> <li>o elevation or RL (Reduced Level – elevation above sea level in metres) of the drill hole collar</li> <li>o dip and azimuth of the hole</li> <li>o down hole length and</li> </ul> </li> </ul>	Not applicable



	<p>interception depth</p> <p>o hole length.</p> <ul style="list-style-type: none"> <li>· If the exclusion of this information is justified on the basis that the information is not Material and this exclusion does not detract from the understanding of the report, the Competent Person should clearly explain why this is the case.</li> </ul>	
Data aggregation methods	<ul style="list-style-type: none"> <li>· In reporting Exploration Results, weighting averaging techniques, maximum and/or minimum grade truncations (eg cutting of high grades) and cut-off grades are usually Material and should be stated.</li> <li>· Where aggregate intercepts incorporate short lengths of high grade results and longer lengths of low grade results, the procedure used for such aggregation should be stated and some typical examples of such aggregations should be shown in detail.</li> </ul>	Not applicable. Not cut-off all results published.



	<ul style="list-style-type: none"> <li>The assumptions used for any reporting of metal equivalent values should be clearly stated.</li> </ul>	
Relationship between mineralization widths and intercept lengths	<ul style="list-style-type: none"> <li>These relationships are particularly important in the reporting of Exploration Results.</li> <li>If the geometry of the mineralization with respect to the drill hole angle is known, its nature should be reported.</li> <li>If it is not known and only the down hole lengths are reported, there should be a clear statement to this effect (eg 'down hole length, true width not known').</li> </ul>	No drilling was undertaken. Results reported are from surface rock-chip sampling only.
Diagrams	<ul style="list-style-type: none"> <li>Appropriate maps and sections (with scales) and tabulations of intercepts should be included for any significant discovery being reported. These should include, but not be limited to a plan view of drill hole collar locations and appropriate sectional views.</li> </ul>	Refer to figures in this report noting that the reported historical mineralisation at Kirkalocka is distributed across multiple prospects and drilling programmes over a broad area. Given the spatial distribution of the reported results and the absence of sufficient drilling density to support meaningful sectional interpretation, plan-view imagery has been presented to illustrate the location and distribution of historical mineralisation.



Balanced reporting	<ul style="list-style-type: none"> <li>Where comprehensive reporting of all Exploration Results is not practicable, representative reporting of both low and high grades and/or widths should be practiced to avoid misleading reporting of Exploration Results.</li> </ul>	<p>The Company has reported the most significant results identified from its review of the historical dataset. Complete assay results are provided in the accompanying tables. The Company considers this reporting to be balanced and representative of the historical exploration data available for review.</p>
Other substantive exploration data	<ul style="list-style-type: none"> <li>Other exploration data, if meaningful and material, should be reported including (but not limited to): geological observations; geophysical survey results; geochemical survey results; bulk samples – size and method of treatment; metallurgical test results; bulk density, groundwater, geotechnical and rock characteristics; potential deleterious or contaminating substances.</li> </ul>	<p>Not applicable.</p>
Further work	<ul style="list-style-type: none"> <li>The nature and scale of planned further work (eg tests for lateral extensions or depth extensions or large-scale step-out drilling).</li> </ul>	<p>For Catalina's purposes, this historical work supports the view the anomalies represent valid targets for modern reassessment and follow-up exploration. However, no conclusions regarding economic mineralisation can be drawn without further validation and drilling.</p>

