

ASX Release  
25 May 2011

ASX code: MAU

Level 2, 16 Ord St  
West Perth WA 6005  
PO Box 1388  
West Perth WA 6872  
Telephone 08 9226 1777  
Facsimile 08 9485 2840  
info@magres.com.au  
www.magres.com.au

ABN 34 121 370 232

## Jubuk Gravity Survey Extends Magnetite Target Zone

As announced previously Magnetic Resources is conducting a detailed gravity survey over its Jubuk magnetite project.

The gravity survey is expected to provide greater definition of target zones and to allow prioritisation of target areas for drilling. Preliminary gravity results show numerous strong responses and indicate that the magnetite zone could extend about 600m south of the drilled area, where the magnetic data indicates a narrowing and weakening response, see Figure 1.

Drilling in mid 2010 of a second prospective parallel zone (termed Marriotts) to the south of Jubuk did not intersect significant grades however it is anticipated that the gravity data will allow more effective positioning of drill holes to test this large target zone.

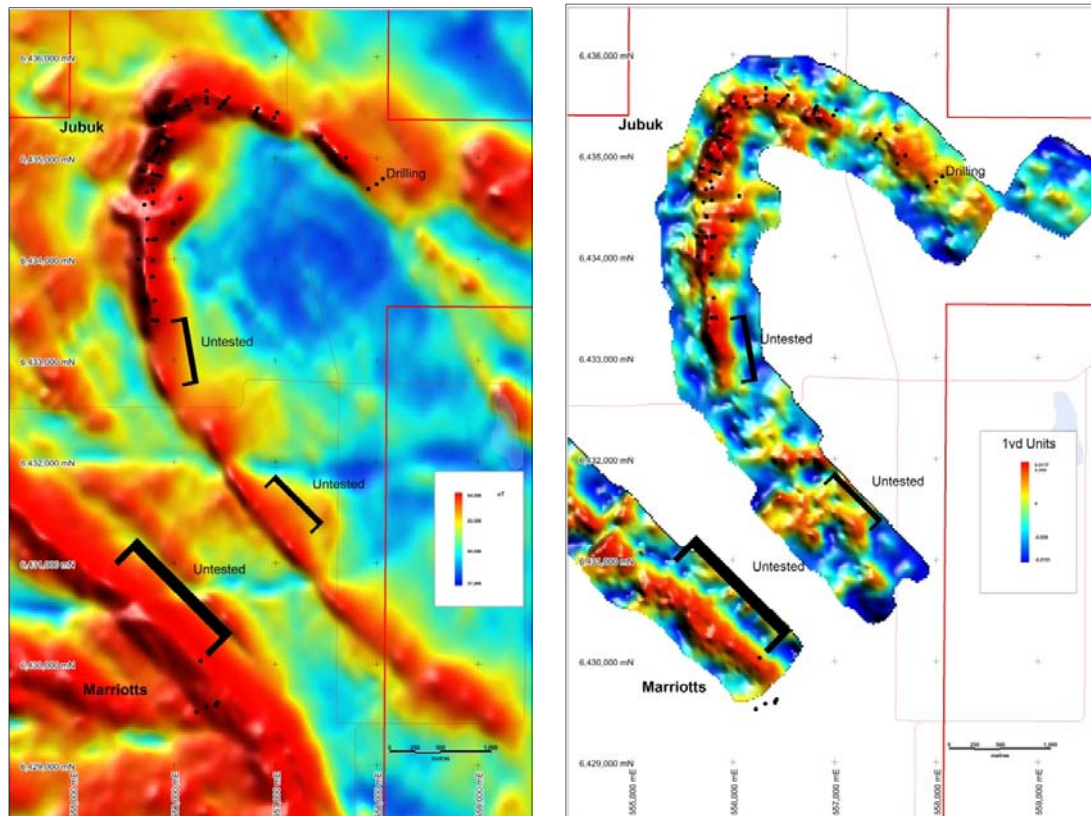


Figure 1  
Untested areas at Jubuk indicated by the new gravity (right) compared to the magnetic data (left).

The gravity survey is being extended to the south along both prospective horizons and will be subject to intensive processing and interpretation in conjunction with the airborne and ground magnetic data previously collected by Magnetic Resources.

The new gravity target zones add a further 2.7km to the existing 4km strike of known magnetite mineralisation and have the potential to add significant tonnages to the Jubuk mineralisation. Drilling of these priority targets will commence upon completion of the necessary permitting. Test work on the Jubuk mineralisation continues to indicate a premium quality magnetite product of the type sought by a range of international consumers.

For more information on the company visit [www.magres.com.au](http://www.magres.com.au)

George Sakalidis  
Managing Director  
Phone (08) 9226 1777  
Mobile 0411 640 337  
Email [george@magres.com.au](mailto:george@magres.com.au)

Roger Thomson  
Technical Director  
Phone (08) 9226 1777  
Mobile 0419 969 183  
Email [roger@magres.com.au](mailto:roger@magres.com.au)

The information in this report is based on information compiled by Allan Younger (Dip Applied Geol), who is a member of the Australasian Institute of Mining and Metallurgy. Allan Younger is an employee of Magnetic Resources NL. Allan Younger has sufficient experience which is relevant to the style of mineralisation and type of deposit under consideration and to the activity which he is undertaking to qualify as a Competent Person as defined in the 2004 edition of the 'Australasian Code for Reporting of Exploration Results, Mineral Resources and Ore Reserves'. Allan Younger consents to the inclusion of this information in the form and context in which it appears in this report.