



PLATINA  
RESOURCES LIMITED

ASX Code: PGM

# 2013中国矿业大会 (天津)

Skaergaard 金铂项目

Robert Mosig 董事总经理，首席执行官



### Cautionary and Forward-Looking Statements

*This presentation contains “forward-looking information” which may include, but is not limited to, statements with respect to the future financial or operating performance of Platina Resources Limited (“Platina”), its subsidiaries and its projects, the future price of platinum group metals (“PGM’s”), the estimation of mineral resources, operating and exploration expenditures, costs and timing of development of new deposits, costs and timing of future exploration, requirements for additional capital, government regulation, environmental risks, reclamation expenses, title disputes or claims and limitations of insurance coverage. Often, but not always, forward-looking statements can be identified by the use of words such as “plans”, “expects”, “is expected”, “budget”, “scheduled”, “estimates”, “forecasts”, “intends”, “anticipates”, or “believes” or variations (including negative variations) of such words and phrases, or state that certain actions, events or results “may”, “could”, “would”, “might” or “will” be taken, occur or be achieved. Forward-looking statements involve known and unknown risks, uncertainties and other factors which may cause the actual results, performance or achievements of Platina and/or its subsidiaries to be materially different from any future results, performance or achievements expressed or implied by the forward-looking statements. Such factors include, among others, general business, economic, competitive, political and social uncertainties; the actual results of current exploration activities; conclusions of economic evaluations; changes in project parameters as plans continue to be refined; future prices of PGM’s; possible variations of ore grade or recovery rates; failure of plant, equipment or processes to operate as anticipated; accident, labor disputes and other risks of the mining industry; and delays in obtaining governmental approvals or financing or in the completion of development or construction activities. Although Platina has attempted to identify important factors that could cause actual actions, events or results to differ materially from those described in forward-looking statements, there may be other factors that could cause actions, events or results to differ from those anticipated, estimated or intended. Forward-looking statements contained herein are made as of the date of this presentation and Platina disclaims any obligation to update any forward-looking statements, whether as a result of new information, future events or results or otherwise. There can be no assurance that forward-looking statements will prove to be accurate, as actual results and future events could differ materially from those anticipated in such statements. Platina undertakes no obligation to update forward-looking statements if circumstances or management’s estimates or opinions should change. Accordingly, the reader is cautioned not to place undue reliance on forward-looking statements.*

### Competent Person’s Statement

*The information in this announcement that relates to the Owendale Indicated and Inferred Mineral Resource is extracted from the report entitled ASX Release “PGM Owendale Updated Resource Estimate” created on 3 October 2013 and is available to view on [www.platinareources.com.au](http://www.platinareources.com.au). The report was issued in accordance with the 2012 Edition of the JORC Australasian Code for Reporting of Exploration Results, Mineral Resources and Ore Reserves. The Company confirms that it is not aware of any new information or data that materially affects the information included in the original market announcement and, in the case of estimates of Mineral Resources, that all material assumptions and technical parameters underpinning the estimates in the relevant market announcement continue to apply and have not materially changed. The Company confirms that the form and context in which the Competent Person’s findings are presented have not been materially modified from the original market announcement.*

*The information in this announcement that relates to the Skaergaard Indicated and Inferred Mineral Resource is extracted from the report entitled ASX Release “New Resource Estimate for Skaergaard Gold and PGM Project, East Greenland” created on 23 July 2013 and is available to view on [www.platinareources.com.au](http://www.platinareources.com.au). The report was issued in accordance with the 2012 Edition of the JORC Australasian Code for Reporting of Exploration Results, Mineral Resources and Ore Reserves. The Company confirms that it is not aware of any new information or data that materially affects the information included in the original market announcement and, in the case of estimates of Mineral Resources, that all material assumptions and technical parameters underpinning the estimates in the relevant market announcement continue to apply and have not materially changed. The Company confirms that the form and context in which the Competent Person’s findings are presented have not been materially modified from the original market announcement.*

*The information in this Presentation that relates to Munki Munki Mineral Resources is based on information compiled by Mr R W Mosig who is a full time employee of Platina Resources Limited and who is a Fellow of The Australasian Institute of Mining and Metallurgy. Mr Mosig has sufficient experience which is relevant to the style of mineralisation and type of deposit under consideration and to the activity which he is undertaking to qualify as a Competent Person as defined in the 2004 Edition of the Australasian Code for Reporting of Exploration Results, Mineral Resources and Ore Reserves. Mr Mosig consents to the inclusion in the report of the matters based on this information in the form and context in which it appears.*

*The information in this Presentation that relates to Exploration Results is based on information compiled by Mr M Dugmore who is a full time employee of Platina Resources Limited and who is a Member of The Australasian Institute of Mining and Metallurgy. Mr Dugmore has sufficient experience which is relevant to the style of mineralisation and type of deposit under consideration and to the activity which he is undertaking to qualify as a Competent Person as defined in the 2004 Edition of the Australasian Code for Reporting of Exploration Results, Mineral Resources and Ore Reserves. Mr Dugmore consents to the inclusion in the presentation of the matters based on this information in the form and context in which it appears.*

初级勘探公司致力于位于澳大利亚和格陵兰的贵金属项目

### 矿产资源 (新南威尔士州)

铂控制和推断资源

- 3100吨 @ 0.52 克/吨 铂 (52万盎司铂)

钨控制和推断资源

- 2400万吨 @ 380 克/吨 钨 (9,100吨钨金属)

### 穆尼姆尼 (西澳州)

探明、控制和推断资源

- 2360万吨 @ 1.1克/吨 铂, 1.5克/吨 钨 & 0.2 克/吨 金  
~80万盎司铂 & ~110万盎司钨

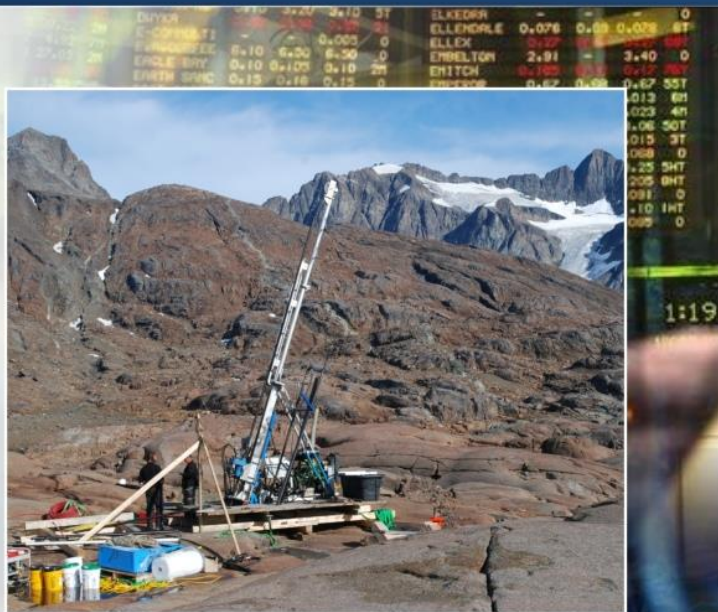
### Skaergaard (格陵兰)

推测和控制资源

- 2.2亿吨 @ 0.88克/吨 金, 1.33克/吨 钨 & 0.11克/吨 铂  
570万盎司金 & 870万盎司钨

### 勘探项目

在西澳正在申请12个勘探准证，覆盖大约3,000平方公里 - 开发铂族金属, 镍铜和近矿藏。



## AUSTRALIA

80万盎司 铂  
110万盎司 钯  
15万盎司 金

52万盎司 铂  
9,100 吨 钨

Munni Munni



Rason



Roundill



Jackaboy



Bills Paddock

Wylie

Owendale



## GREENLAND

570 万盎司 金  
870 万盎司 钯  
70 万盎司 铂

ICELAND

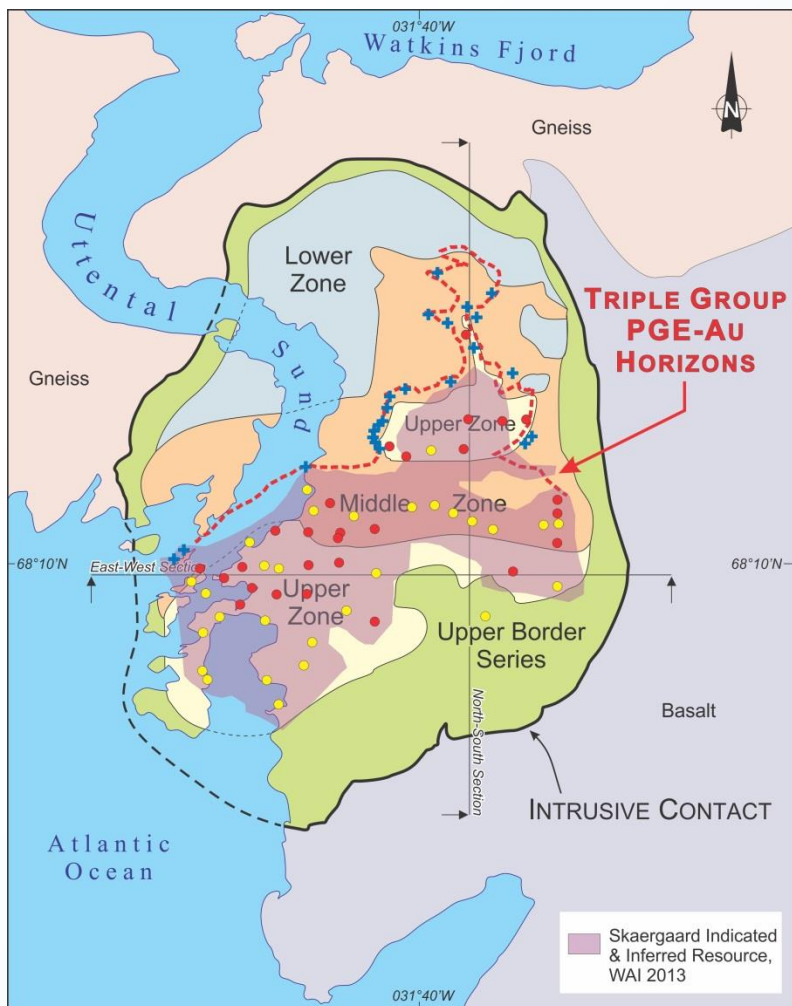
Skaergaard &  
Kangerlussuaq



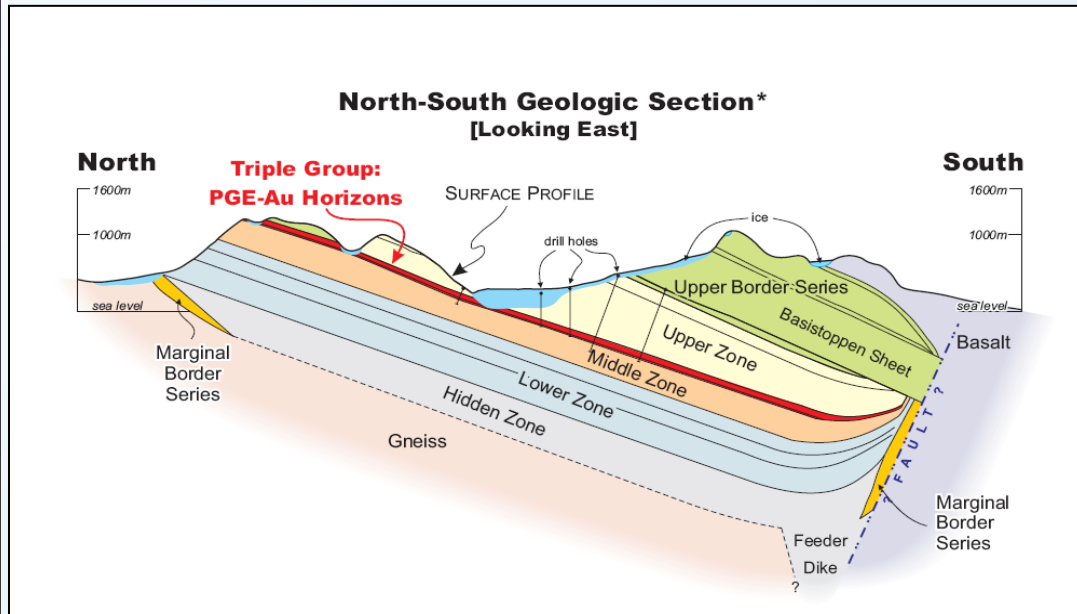


**SKAERGAARD**  
金铂项目





- 层状超镁铁侵入岩
- 着重考虑露天开采的可能性
- 资源储藏项南部倾斜20%



**SKAERGAARD INDICATED and INFERRED MINERAL RESOURCE, WAI 2013**

### •SKAERGAARD矿化资源评估，混合矿化礁H0+H3+H5

| 资源分类 | 吨位(千吨)  | 金(克/吨) | 钯(克/吨) | 铂(克/吨) | 金当量(克/吨) | 金(百万盎司) | 钯(百万盎司) | 铂(百万盎司) |
|------|---------|--------|--------|--------|----------|---------|---------|---------|
| 控制   | 5,080   | 1.25   | 0.88   | 0.06   | 1.66     | 0.2     | 0.14    | 0.01    |
| 推断   | 197,140 | 0.87   | 1.35   | 0.11   | 1.51     | 5.49    | 8.53    | 0.68    |
| 总计   | 202,220 | 0.88   | 1.33   | 0.11   | 1.52     | 5.69    | 8.67    | 0.69    |

- 矿产资源不是矿产储量，可行性研究或预可行性研究要证明它的经济效益。
- 含金量仅代表地下的金属，还没有通过冶金回收进行数据调整。
- 金当量 = 金 + 铂 + (Pd x 0.4)，其中黄金价格按1,400美元/盎司计算，铂金价格1,400美元/盎司，钯价格为US\$560/oz。金属当量计算假设为100%冶金回收。
- 边缘品位 = 1克/吨 金当量；
- 最小厚度为1米，厚度1米以下的部分已经稀释到1米，全球应用规范为减少10%，考虑到堤围的交叉区域。
- 珊瑚礁H0:H3:H5的资源可被分割为44:26:30%。

🌀 **世界上最大的钯和金矿资源**

🌀 **有大吨量生产的潜力包括：铁—钛—矾**

🌀 **运营成本会高，需要合作伙伴**



☞ AMEC负责从事的实验室规模测试

☞ 浮选回收率可达到：

- 92.7% 金

- 89.7% 钼

☞ 小型酸洗既可以生产出合质金锭

☞ 制定每周、每年的生产计划



### 已发行股份

上市普通股: ASX: PGM

发行股份: 1.32 亿

未上市股权: 880万

**股票价格(2013年9月3日): 7分**

6月30日现今: 澳币 \$130万

**市值: ~澳币\$920万**

### 大股东

Panther Palladium LLC 18.1%

Cairnglen Investments Pty Ltd 9.0%

Sino Portfolio International 7.0%

Yandal Investments Pty Ltd 5.1%

Citicorp Nominees Pty Ltd 3.7%

**前10位 54.2%**



6 month price chart.

10 Source ASX





- ☞ **Reg Gillard, 分行政董事 主席 – BA, FAICD, FACPA, JP**
  - Reg 有着30年的勘探和矿业公司组织兴建、管理和金融方面的经验。



- ☞ **Robert W. Mosig, 董事总经理 – MSc, FAusIMM, FAICD**
  - Rob 作为地质专家，有着30多年在亚太区从事铂金属，黄金和钻石勘探经验。



- ☞ **Brian Moller, 非行政董事 – LLB (Hons)**
  - 自1983年以来，Brian 便是布里斯本一家律师事务所Hopgood Ganim的合伙人，他的职业专长是企业管理、融资、兼并和收购。



- ☞ **Mark Dugmore, 勘探经理 – MSc, MAusIMM**
  - Mark 是一位有着25年专业工作经验的地质专家，精于全球和澳洲的黄金和贱金属勘探工作。

- 重点业务是澳大利亚和格陵兰的铂和贵金属项目
- 优越的黄金和铂金属储藏
- 非洲和俄罗斯外的最大的钯金储藏之一
- 可能采用地下开采方式，品位低
- 最新信息确定项目有大吨量开采（包括钒、钛、磁铁矿）的潜力
- 有可能在矿址上使用冰岛丰富的地热进行冶金浓缩处理。



PLATINA  
RESOURCES LIMITED

ASX Code: PGM

谢谢

网站:

[www.platinaresources.com.au](http://www.platinaresources.com.au)

公司总部:

2 Boston Court, Varsity Lakes  
QLD 4227, Australia

电话:

+61 (0)7 5580 9094

传真:

+61 (0)7 5580 9394

电子信箱:

[office@platinaresources.com.au](mailto:office@platinaresources.com.au)