



CONSOLIDATED

TIN MINES LTD

Investing in New Tin Supply

International Tin Conference:
Vancouver May, 2010

Disclaimer

CONSOLIDATED
TIN MINES LTD

This presentation has been prepared by Consolidated Tin Mines Ltd (CSD) based on information from its own and third party sources and is not a disclosure document. By retaining this Presentation, you (the Recipient) acknowledge and represent to CSD that you have read, understood and accept the terms of this Important Notice. If you do not accept these terms, you should immediately destroy or delete this Presentation. This Presentation does not purport to contain all information that a prospective investor may require in connection with any potential investment in CSD. Each Recipient must make its own independent assessment of CSD before acquiring any securities in CSD ("Securities"). You should not treat the contents of this Presentation, or any information provided in connection with it, as financial advice, financial product advice or advice relating to legal, taxation or investment matters. Before acquiring any Securities, you should consult your own advisers and conduct your own investigation and analysis in relation to CSD.

No representation or warranty is made by CSD or any of its advisers, agents or employees as to the accuracy, completeness or reasonableness of the information in this Presentation or provided in connection with it. No information contained in this Presentation or any other written or oral communication in connection with it is, or shall be relied upon as, a promise or representation and no representation or warranty is made as to the accuracy or attainability of any estimates, forecasts or projections set out in this Presentation. No liability will attach to CSD or its advisers with respect to any such information, estimates, forecasts or projections. CSD does not accept responsibility or liability for any loss or damage suffered or incurred by you or any other person or entity however caused (including, without limitation, negligence) relating in any way to this Presentation including, without limitation, the information contained in or provided in connection with it, any errors or omissions from it however caused (including without limitation, where caused by third parties), lack of accuracy, completeness, currency or reliability or you, or any other person or entity, placing any reliance on this Presentation, its accuracy, completeness, currency or reliability. CSD does not accept any responsibility to inform you on any matter arising or coming to CSD's notice after the date of this Presentation which may affect any matter referred to in this Presentation. Any liability of CSD, its advisers, agents and employees to you or to any other person or entity arising out of this Presentation including pursuant to the Australian Securities and Investments Commission Act, 2001, Corporations Act 2001 and the Trade Practices Act 1974 or any other applicable law is, to the maximum extent permitted by law, expressly disclaimed and excluded. The distribution of this Presentation may be restricted by law in certain jurisdictions. Recipients, and any other persons who come into possession of this Presentation must inform themselves about, and observe any such restrictions.

Future Matters

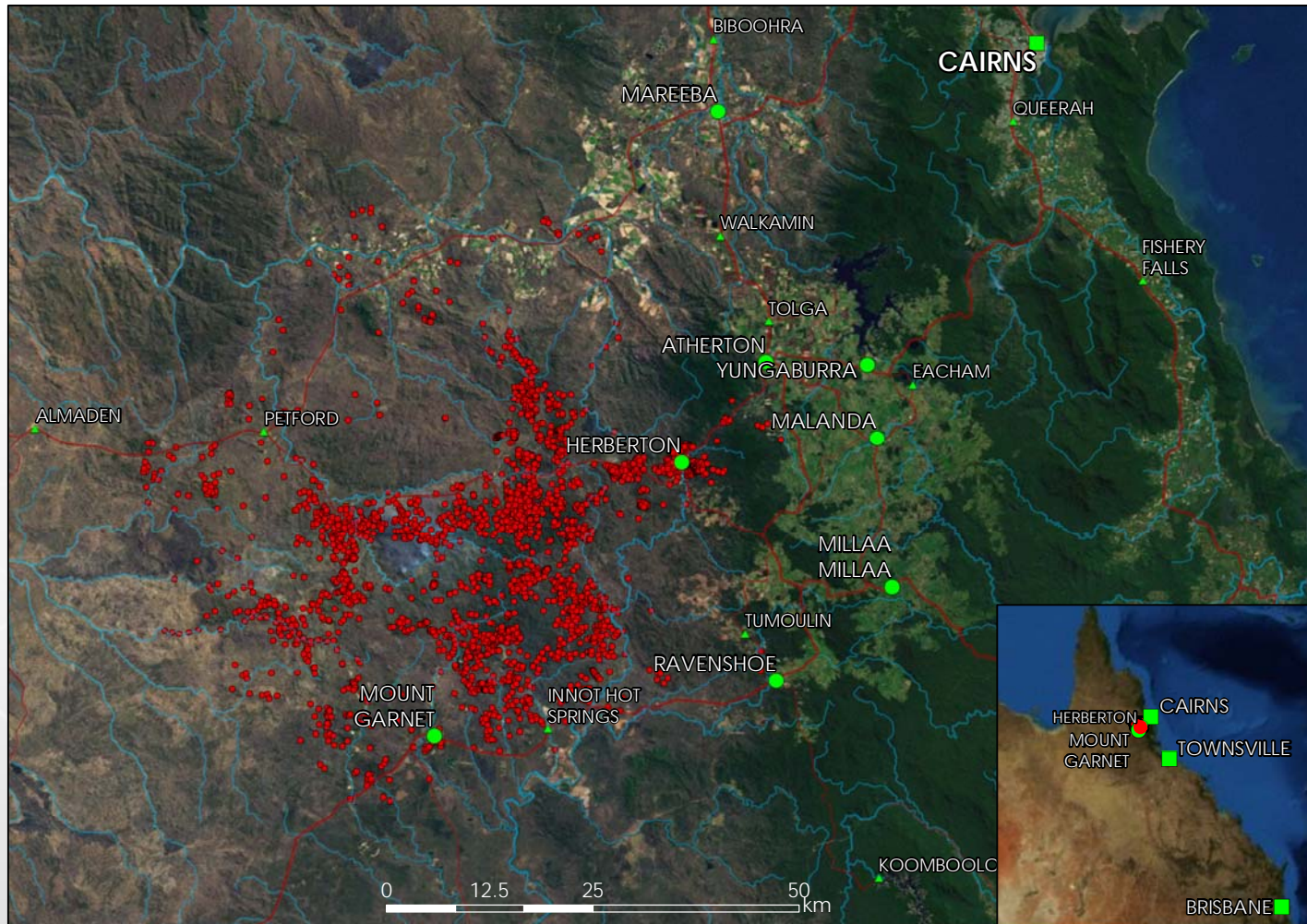
This Presentation contains reference to certain intentions, expectations, future plans, strategy and prospects of CSD. Those intentions, expectations, future plans, strategy and prospects may or may not be achieved. They are based on certain assumptions, which may not be met or on which views may differ and may be affected by known and unknown risks. The performance and operations of CSD may be influenced by a number of factors, many of which are outside the control of CSD. No representation or warranty, express or implied, is made by CSD or any of its directors, officers, employees, advisers or agents that any intentions, expectations or plans will be achieved either totally or partially or that any particular rate of return will be achieved. Given the risks and uncertainties that may cause CSD's actual future results, performance or achievements to be materially different from those expected, planned or intended, Recipients should not place undue reliance on these intentions, expectations, future plans, strategy and prospects. CSD does not warrant or represent that the actual results, performance or achievements will be as expected, planned or intended.

NEW TIN SUPPLY FROM HISTORIC TIN FIELD

Herberton Tin Field



Historic Tin Mines in Herberton Tin Field:



Herberton Tin Field History

CONSOLIDATED
TIN MINES LTD

- 1875 – Tin discovery in Herberton (James Venture Mulligan)
- 1879 a prospectus party (Jack, Newell, Brandon, Brown) found payable amounts of tin in Prospectors Gully, where Herberton town now stands
- This was a MAJOR find
- 1880 Tin mining commences at one of the richest Tin finds in Australia
- Expansion continued rapidly through the 1880's
- Over 2,000 named mines since its discovery over a century ago
- Mining stopped 1985 due to Tin price collapse
- No operating tin mines today
- Enormous potential to recommence mining

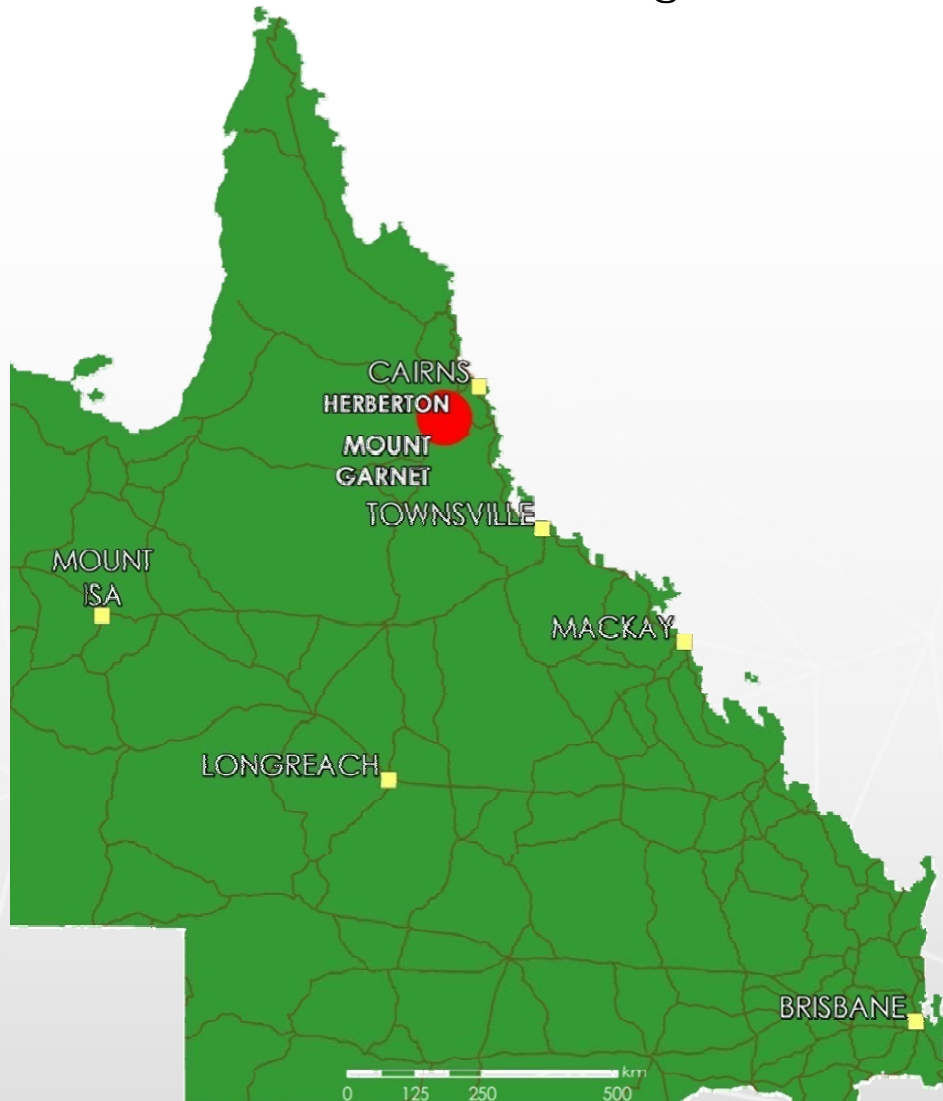


HERBERTON TINFIELD FUTURE POTENTIAL

Large Mineralised Area

CONSOLIDATED
TIN MINES LTD

Queensland, Australia, showing Herberton Tin Field (in red)



- Initial mining at Herberton saw grades of 50 to 60% Sn ore directly shipped to smelters in Britain
- Large area of over 5,000km²
- Mined for over a century on high grade tin
- There is massive potential for a 'second generation' of the Herberton tin field mining large volume /medium grade
- Significant volumes of easily winnable open pit minable ore
- Enormous Potential
- Requires central mill with economy of scale to treat 'second generation' medium grade ore

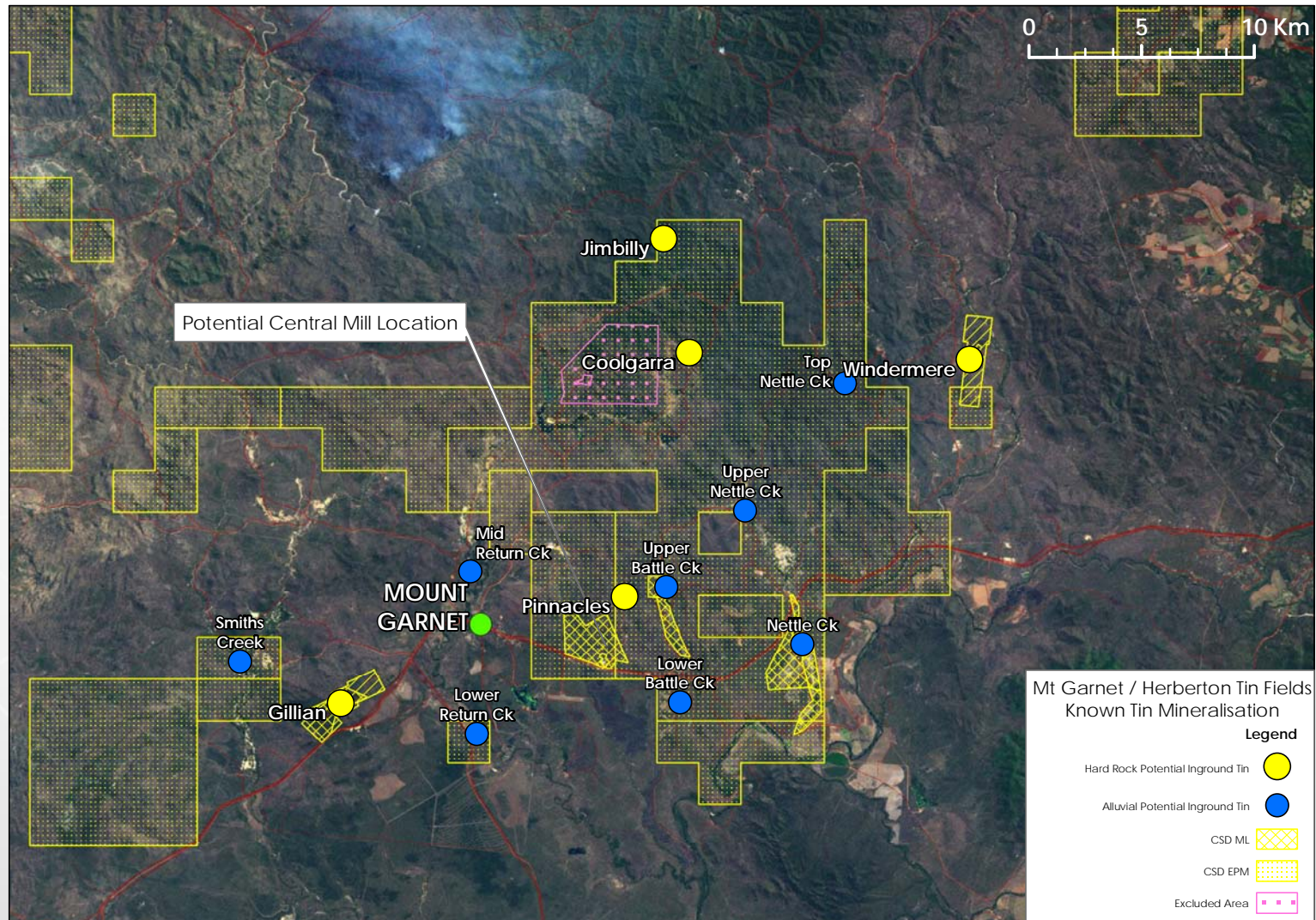
Known Tin Potential



- Millions of dollars have been spent drilling the tin field
- Drilling prior to tin price collapse in 1985 was mostly for company 'in house' use and does not comply with 2004 JORC Resource reporting requirements
- Extensive drilling to bring a huge volume of Tin to comply with 2004 JORC standard would be a mistake for any company
- CSD model is to establish only sufficient ore to modern reporting standard for first 8 to 10 years mine life
- The key to the success of the 'second generation' of the Herberton Tin Field is a mill with the economy of scale to profitably treat medium grade ore (+/- .5% Sn)

Herberton Tin Field Central Mill Concept

CONSOLIDATED
TIN MINES LTD



CONSOLIDATED
TIN MINES LTD



Legend

- | | |
|---|----------------|
|  | Ore Stockpile |
|  | Plant Site |
|  | Return Water |
|  | Freshwater Dam |
|  | Tailings Dam |

Why Australia?



North Queensland , Australia:

- Stable government
- Good mining laws
- Sound environmental policies
- Mining expertise / Experienced Mineworkers
- Significant Tinfield, enormous potential
- Medium grade/high volume Tin production
- Near surface low cost mining



CONSOLIDATED TIN MINES LIMITED

Company highlights



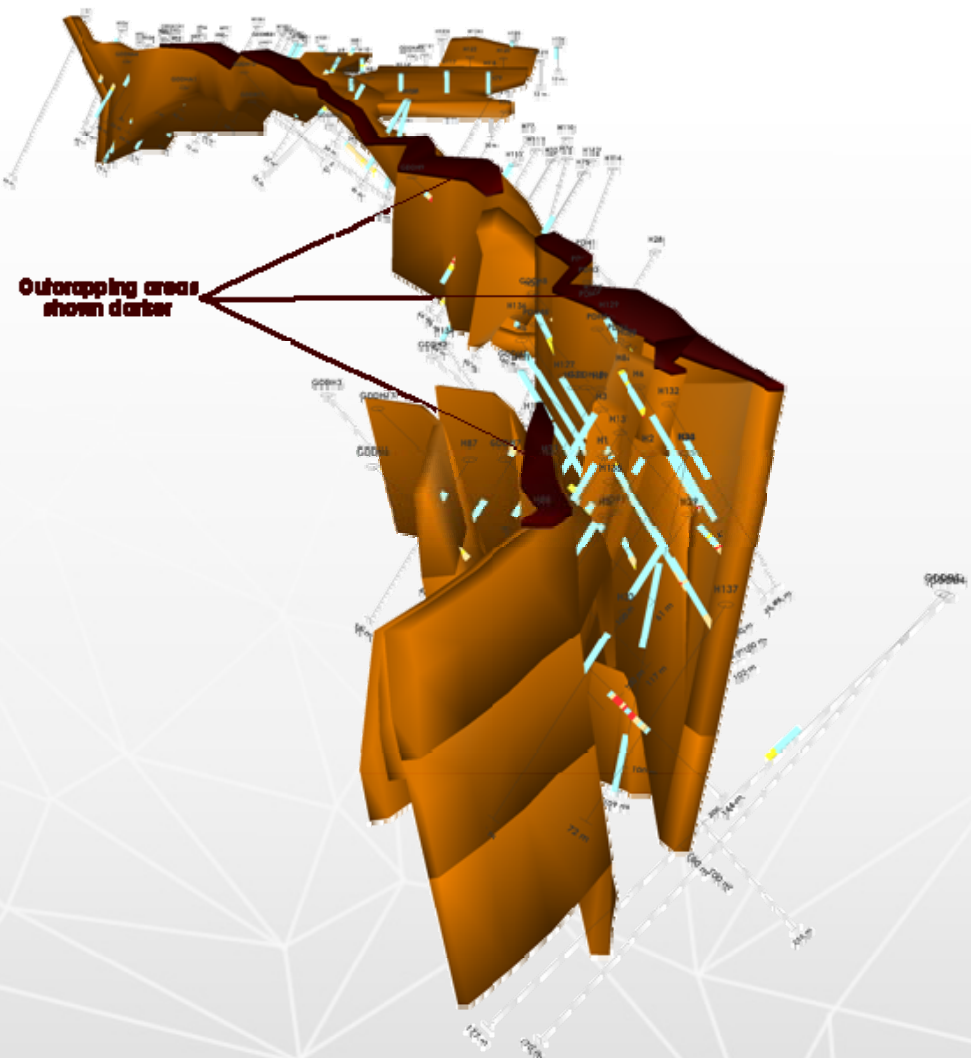
- Focused on developing a major Australian Tin mining operation
- Major Herberton Tin Field presence, holding most historic mineralisation areas
- Portfolio of high quality Tin Projects
- Initial aim 8Mt-10Mt @ 0.5% (avg) tin*
- Develop open pit mining operation producing 5,000t tin metal in concentrate per annum
- Initial mine life 8-10 years with major expansion potential from project portfolio
- Project well positioned relative to major road, rail, port infrastructure

*Target mineralisation: This target resource statement is conceptual in nature as insufficient drilling has been undertaken at this stage and it is uncertain that future drilling will result in the determination of this target.

Gillian Project Deposit

Showing Mineralisation near surface

CONSOLIDATED
TIN MINES LTD



Gillian Resource: End View facing grid north

Infrastructure

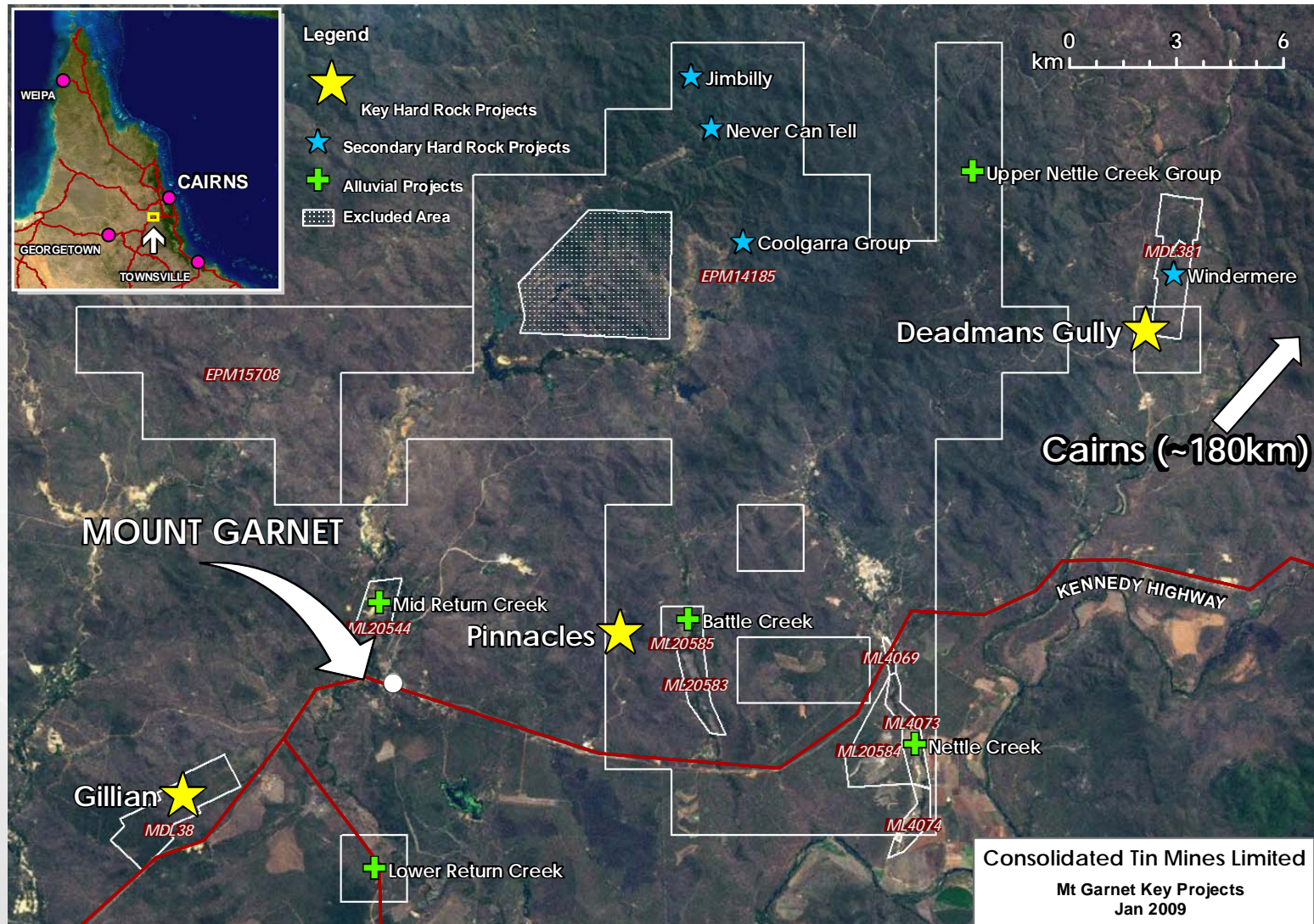


Mt Garnet Project Infrastructure:

- Power - 66KVA transmission line is located within 1km of the proposed mill site. Application lodged with local power supplier Ergon Energy to provide increased capacity to meet proposed use
- Water - Provision to construct a large capacity storage dam. The project is located within a reliable rainfall area
- Port - Nearest port is Mourilyan Harbour, 140km by good all weather sealed highway
- Road - Project located adjacent National Highway 1
- Staff & Accommodation - Proposed project located 6km from Mt Garnet and 40km from Ravenshoe. The general locality is within a historic mining field with local mining expertise and staff available

Project Location Map

CONSOLIDATED
TIN MINES LTD



The information contained in this report that relates to assay results of rock samples and drill chips, to mineral resource estimates and to ore reserve estimates of mineralisation has been compiled by John Sainsbury (BSc, AusIMM). John Sainsbury is a geologist of 30 years experience and has sufficient experience in the type of mineralisation under consideration to qualify as a Competent Person as defined by the Australasian Code for Reporting of Exploration Results, Mineral Resources and Ore Reserves - JORC Code, 2004 Edition. John Sainsbury is an executive director of Consolidated Tin Mines Limited. John Sainsbury has consented to the inclusion of this information in the form and context in which it appears.

Contact Details



Ralph De Lacey
Managing Director
Consolidated Tin Mines
395 Lake Street
CAIRNS NORTH, QLD, 4870

Ph: (07) 4032 0123
Fax: (07) 4027 9435
Mob: 0428 163 176
Email: rd@csdtin.com.au
Or ralph@nqmining.com.au