



MANHATTAN

MANHATTAN CORPORATION LIMITED

CORPORATE PRESENTATION

Alan J Eggers

Executive Chairman

mines and money
Hong Kong 2012

March 19-23, 2012
Hong Kong Conference
and Exhibition Centre.



MANHATTAN
MANHATTAN CORPORATION LIMITED

DISCLAIMER

This presentation does not purport to provide all of the information an interested party may require in order to investigate the subject material and the issues involved nor shall it be construed as a solicitation to buy or sell securities in any listed companies, or to engage in or refrain from engaging in any financial transaction. In preparing this research and presentation, MANHATTAN CORPORATION LIMITED did not take into account the investment objectives, financial situation and particular needs of individual investors.

Before making an investment decision on the basis of this presentation, the investor needs to consider, with or without the assistance of a financial adviser, whether the investment is appropriate in light of their particular investment needs, objectives and financial circumstances.

This presentation contains forward looking statements and is based on publicly available company reports, research publications, stock exchange announcements and technical information believed to be reliable but MANHATTAN CORPORATION LIMITED does not make any representation or warranty to its accuracy, completeness or currency. MANHATTAN CORPORATION LIMITED accepts no obligation to correct or update the information or opinions expressed in the presentation. Opinions expressed, content and information are believed to be reliable and accurately reflect the views of MANHATTAN CORPORATION LIMITED at the time of presenting but are subject to change without notice.

MANHATTAN CORPORATION LIMITED
An Australian resources company



MANHATTAN
MANHATTAN CORPORATION LIMITED

COMPETENT PERSONS' STATEMENTS

Australian Code for Reporting of Exploration Results, Mineral Resources and Ore Reserves

The JORC Code 2004 Edition

The information in this presentation that relates to reported Exploration Results or Mineral Resources is based on information compiled by Mr Alan J Eggers, who is a Corporate Member of the Australasian Institute of Mining and Metallurgy ("AusIMM"). Alan Eggers is a professional geologist and an executive director of Manhattan Corporation Limited. Mr Eggers has sufficient experience that is relevant to the style of mineralisation and type of mineral deposits being reported on in this report and to the activity which he is undertaking to qualify as a Competent Person as defined in the 2004 Edition of the Australasian Code for Reporting of Exploration Results, Mineral Resources and Ore Reserves (JORC Code (2004)). Mr Eggers consents to the inclusion in this report of the information on the Exploration Results or Mineral Resources based on his information in the form and context in which it appears.

In accordance with clause 13 of the JORC Code (2004), tonnage and grade ranges reported as Mineralisation Potential in this presentation must be considered conceptual in nature as there has been insufficient exploration and drilling to define a mineral resource and it is uncertain if further exploration and drilling will result in the determination of a reportable resource.

MANHATTAN CORPORATION LIMITED
An Australian Resources Company

Annual Electricity Consumption

2005/2015 forecast

35% increase in 10 years!

16% of power is nuclear

WHAT'S HAPPENING IN THE
REST OF THE WORLD?

WHY NUCLEAR POWER?

THE CASE FOR NUCLEAR

WASTE

Coke Can (Nuclear)
68t Ash plus 77t CO₂ (Coal)

BASELOAD

Fossil, Nuclear & Hydro

FOOT PRINT

1,000Mw
Nuclear 1km² Wind 520km² Solar 130km²

POLLUTION

Coal burning 30,000 deaths a year in US
350,000 in China

Source: Whole Earth Discipline (Steward Brand)



MANHATTAN
MANHATTAN CORPORATION LIMITED

NUCLEAR SAFETY

NUCLEAR POWER 1956 to 2011
55 YEARS

14,570 REACTOR YEARS
OF EXPERIENCE

FOUR SERIOUS NUCLEAR INCIDENTS



2011 Japan
Fukushima
explosions
& meltdown

NO DEATHS

2011 Japan
Fukushima
explosions
& meltdown

NO DEATHS

NUCLEAR WASTE

Environmental Movement and Greens

Our opponents do not want the problem
resolved (or admit its resolved!)

Source: Whole Earth Discipline (Steward Brand)



MANHATTAN
MANHATTAN CORPORATION LIMITED

AUSTRALIA'S URANIUM RESOURCES



FINANCIAL MARKETS

W. Nicholson
28 May '11



Mining Sector Drives Australia's Economy

A travelling exec not being fazed by the high Aussie dollar



MANHATTAN

MANHATTAN CORPORATION LIMITED

CORPORATE

Business Focus

Uranium Resource & Mine Development

Directors

Alan J Eggers

Executive Chairman

John A G Seton

Director

Marcello Cardaci

Director

Company Secretary

Sam Middlemas

Manager Corp Services

Sue Rowles

(Experienced Former ASX TOP 200 SMM)

Issued Capital

93.3m

Shares

9.3m

(\$0.60 to \$2.20)

Employee Options

Market Capitalisation

A\$30m

Cash & Investments

A\$2.0m

ASX CODE MHC

MHC SHARE PRICE 2011-2012



ASX Code: MHC



2011

2012



MANHATTAN
MANHATTAN CORPORATION LIMITED

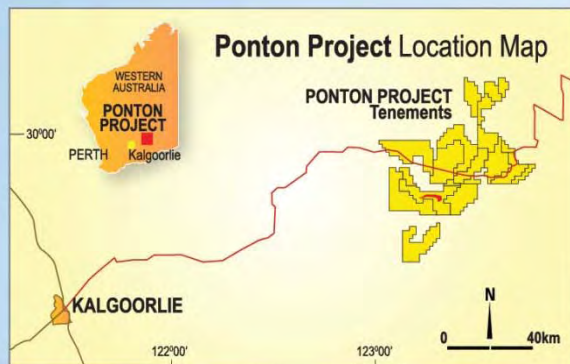
MANHATTAN'S AUSTRALIAN URANIUM PROJECTS



MANHATTAN
MANHATTAN CORPORATION LIMITED

PONTON PROJECT

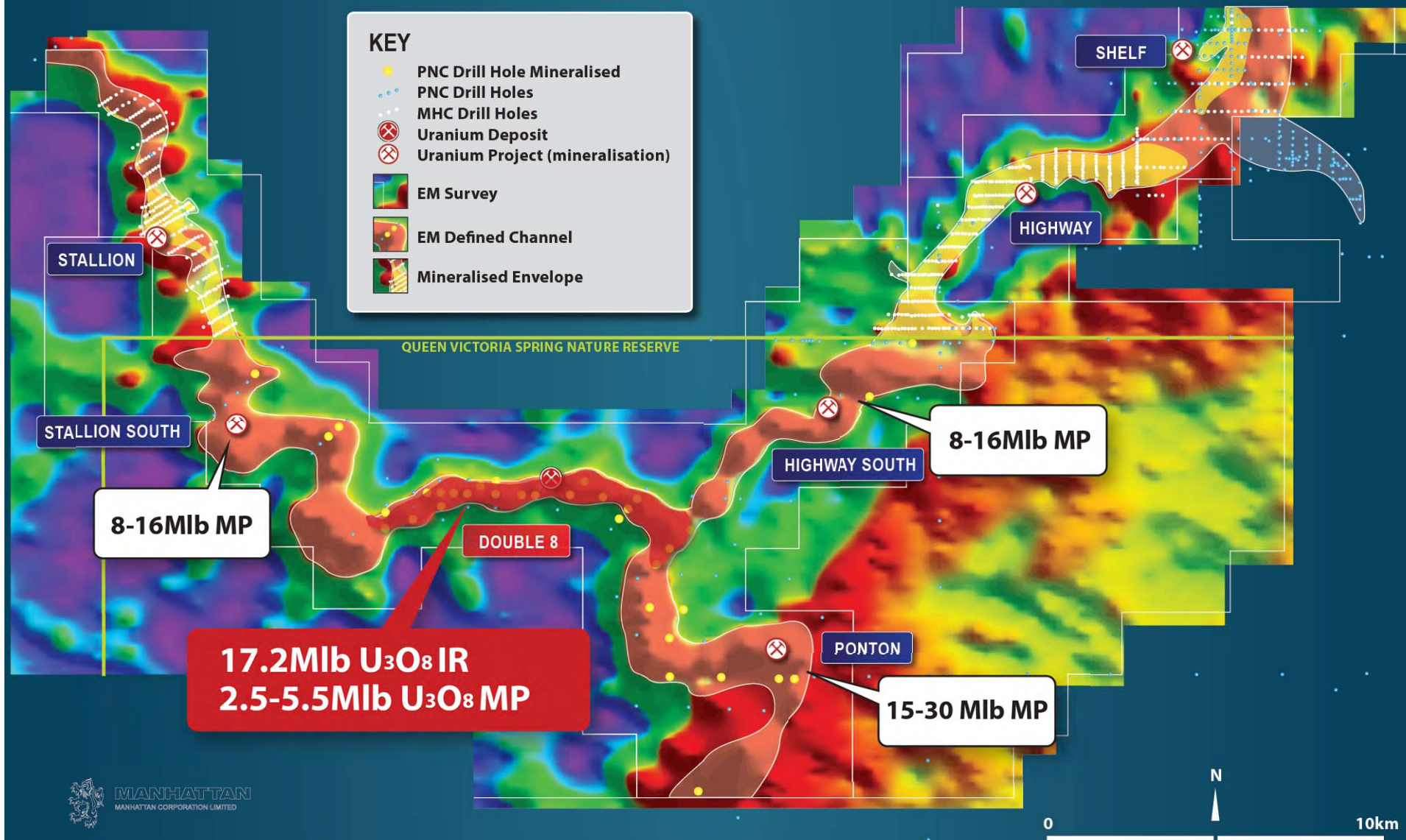
2,300km²



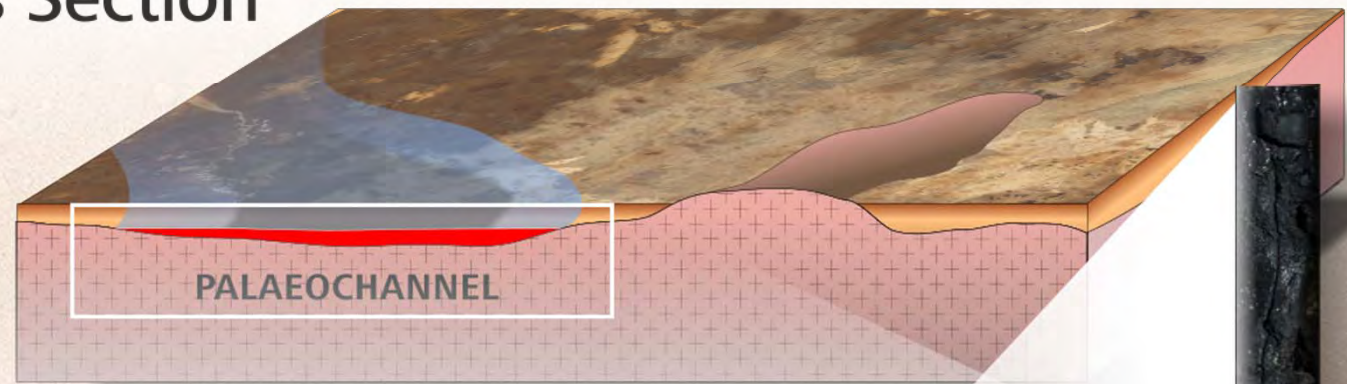
- Exploration Licence Granted
- Exploration Licence Application
- ⊗ Uranium Deposit
- ⊗ Uranium Project (mineralisation)
- Palaeochannel
- REE Targets-Cundeelee Carbonatites



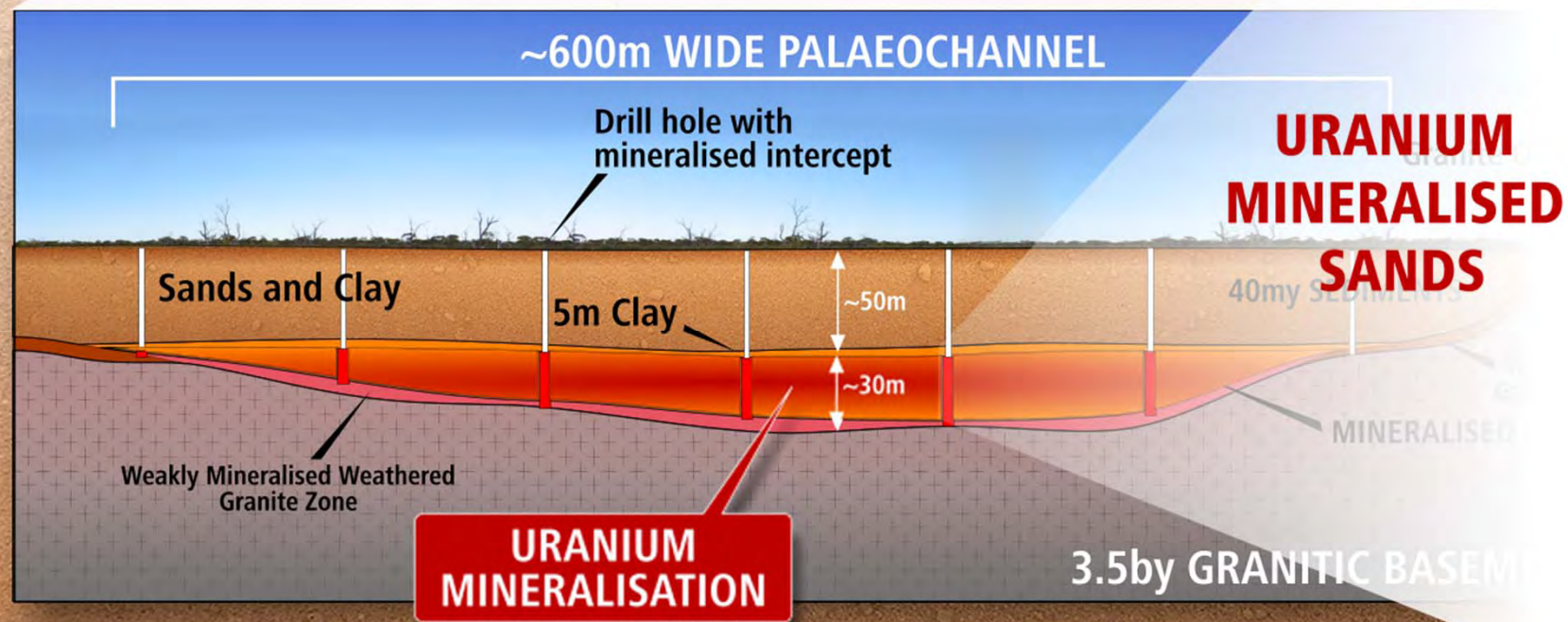
STALLION - DOUBLE 8 - HIGHWAY DRILLING



DOUBLE 8 STALLION Schematic Cross Section



Extensive tabular body or sheet of mineralisation

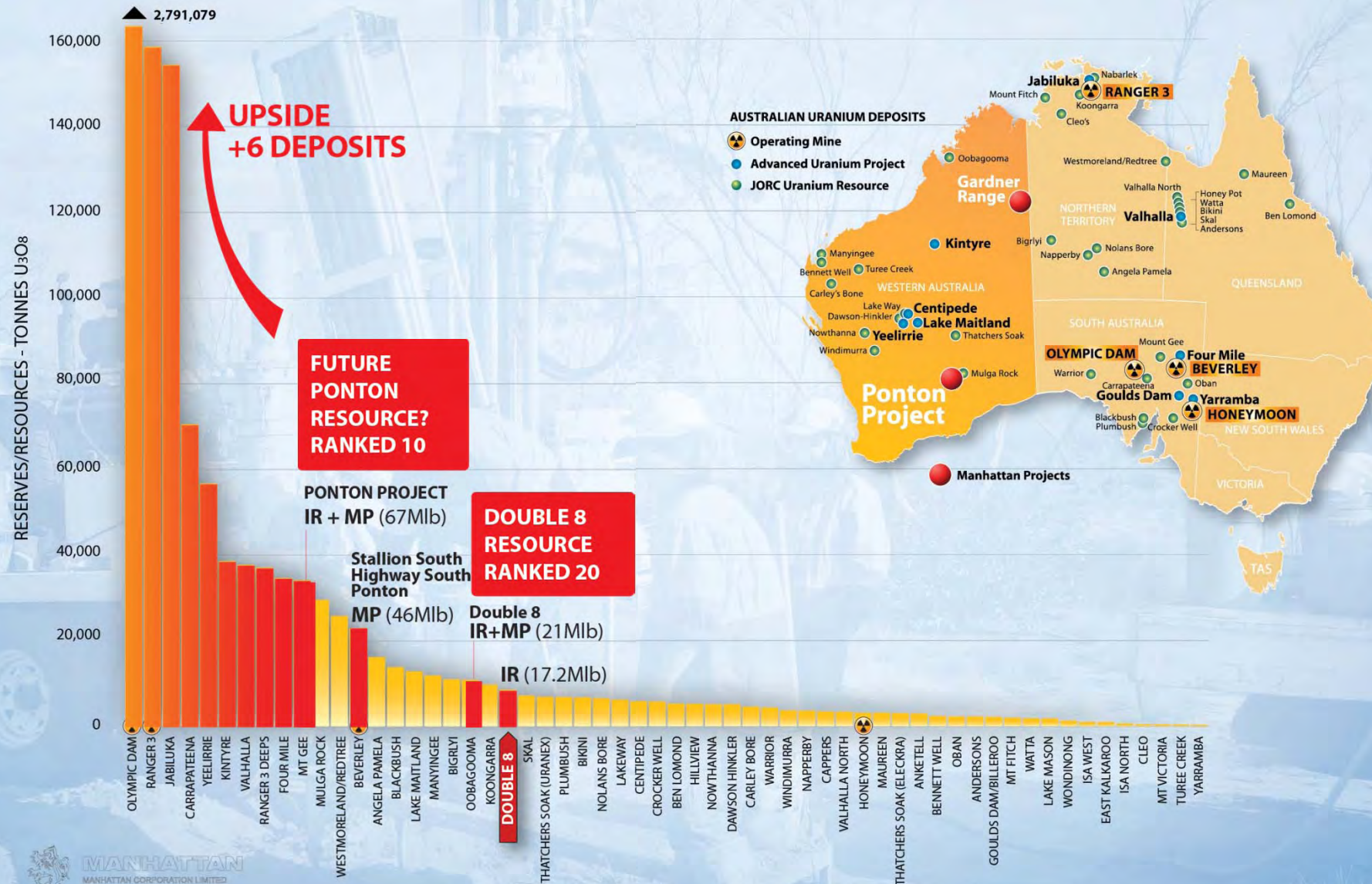


ISL URANIUM RECOVERY LOW ENVIRONMENTAL IMPACT

OPERATING ISL URANIUM MINE IN AUSTRALIA

LOW ENVIRONMENTAL IMPACT, NO MINING, WASTE, DUMPS or HAUL ROADS, SMALL PLANT FOOTPRINT

AUSTRALIA'S URANIUM RESOURCES



PONTON ISL URANIUM PROJECT



TETRA TECH

TETRA TECH DELIVER POSITIVE DESKTOP SCOPING STUDY

August 2011

- Potential Low Cost ISL Producer
- Modest Capex Requirements

RECOMMENDATIONS FOR FURTHER WORK

- Geological
- Hydrological
- Metallurgical &
- Engineering
STUDIES



MANHATTAN CORPORATION
LIMITED

Ponton Uranium Project
Desktop Study

Document No. 1192980100-REP-R0001-01



RECENT DEVELOPMENTS

Germany's Decision

Germany's North Sea wind farm will need to use diesel engines to turn the turbine blades when it's cold and calm – otherwise the blades will freeze solid.

The German government has spent €100 billion in subsidies over several years to encourage its citizens to install solar panels on their rooftops.

20 1,000Mw N Plants!



RECENT DEVELOPMENTS

Nuclear subs back on the table

Defence analysts who endorse the plan have had their case strengthened since the US indicated its support. **John Kerin** plumbs the issues.



The Australian Financial Review
Thursday 8 March 2012



MANHATTAN
MANHATTAN CORPORATION LIMITED

RECENT DEVELOPMENTS

NUCLEAR EXPANSION UNDERWAY

200Mlb shortfall in supply?

New sources primary
uranium supply required
**MANHATTAN CORPORATION NAMED
POTENTIAL TAKEOVER TARGET**
Major corporates & sovereign
wealth funds active

Yellow cake producers & explorers with
inventories are in the spot light



MANHATTAN
MANHATTAN CORPORATION LIMITED



MANHATTAN

MANHATTAN CORPORATION LIMITED

2012 UPSIDE

- ↑ Quality Uranium Deposits
- ↑ Access to Key Licence
- ↑ Double 8 Resource Drilling
- ↑ Maiden Resource Estimates
- ↑ Supply Shortfall Unfolds
- ↑ Improved Value \$/lb U_3O_8
- ↑ Rising Uranium Price



MANHATTAN
MANHATTAN CORPORATION LIMITED





MANHATTAN

MANHATTAN CORPORATION LIMITED

2012 UPSIDE

***“Developing a World Class
ISL Uranium Project”***

ASX Code MHC



MANHATTAN
MANHATTAN CORPORATION LIMITED



MANHATTAN

MANHATTAN CORPORATION LIMITED

THANK YOU

minesand**money**
Hong Kong 2012

March 19-23, 2012
**Hong Kong Conference
and Exhibition Centre.**