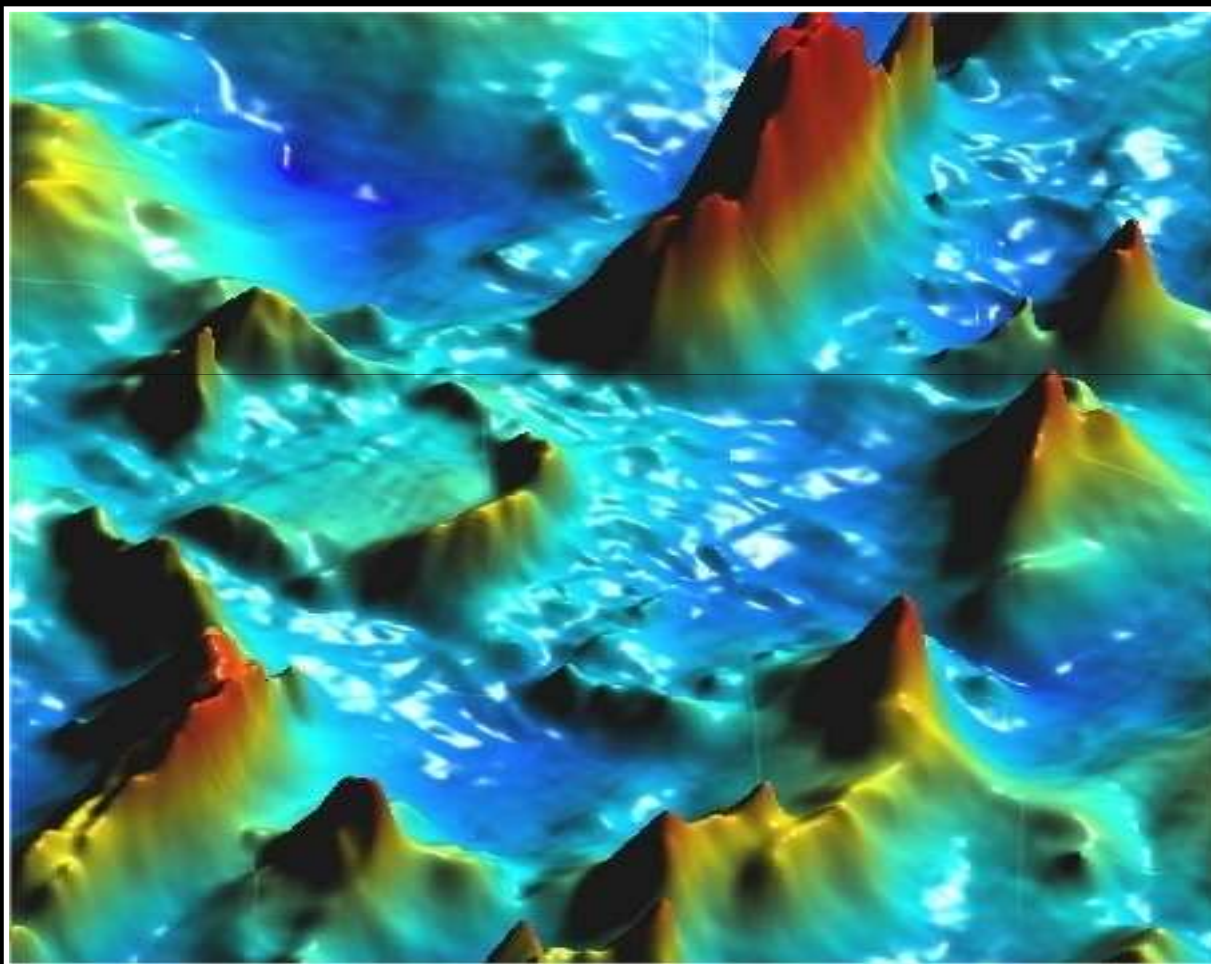




METEORIC RESOURCES



AGM November 2010



FORWARD LOOKING STATEMENTS

This presentation contains forecasts and forward looking statements which are made in good faith and are believed to have reasonable basis. However, such forward looking statements are subject to risks, uncertainties and other factors which could cause the actual results to differ materially from the future results expressed, projected or implied by forward looking statements.



DIRECTORS

ROGER THOMSON

Managing Director, Geologist, 40 years experience

GEORGE SAKALIDIS

Executive Director Exploration, Geophysicist, 30 years experience

PETER THOMAS

Chairman, Lawyer, 26 years experience



SHARE STRUCTURE

Fully paid ordinary shares – all quoted:

(ASX: MEI) 67.7M

Market Capitalisation 8.8M

Contributing shares – Quoted

ASX:MEICA - \$0.20 payable 23.5M

Options to acquire fully paid shares:

Expiring 23.12.2014 - \$0.225 payable 2.4M

Options to acquire contributing shares:

Expiring 16.11.2011 - \$0.0625 payable 4.8M

Cash \$1.7M

PROJECT LOCATIONS

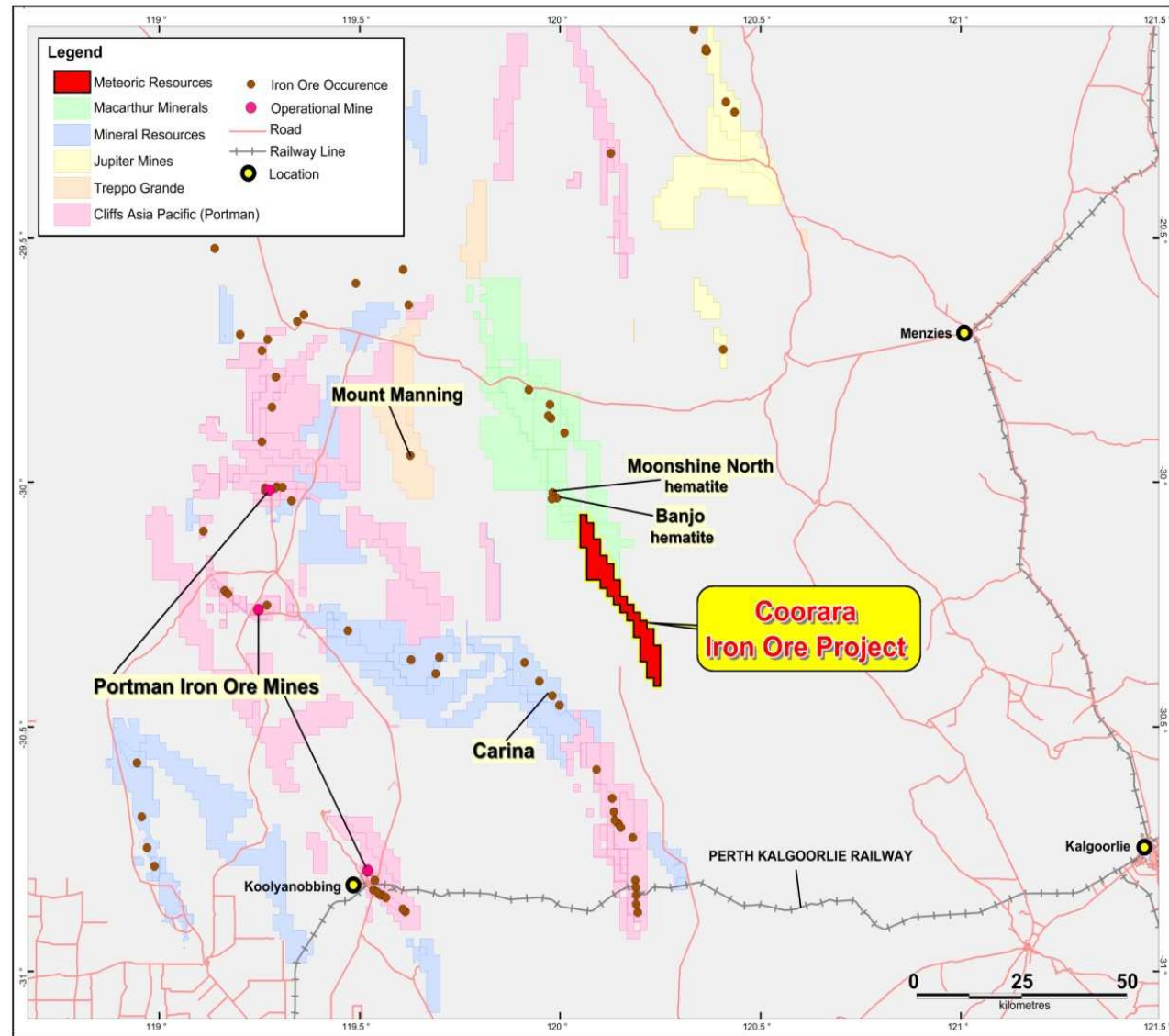




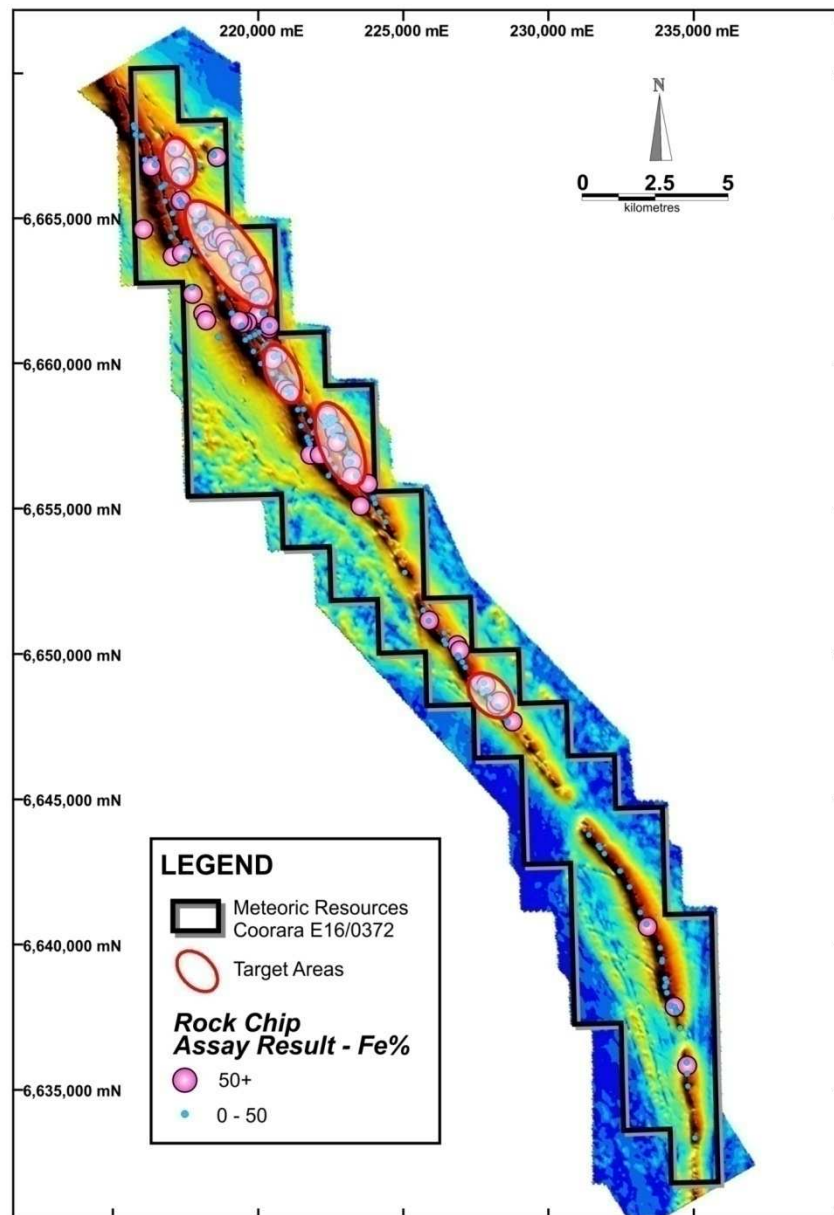
PROJECT UPDATE

- **5 priority hematite targets identified at Coorara >10km strike. Exploration target 100Mt**
- **40km magnetite target at Coorara. Exploration target 1B tonnes**
- **High priority IOCG targets T4 and T5 identified from detailed aeromagnetic surveys at Webb**
- **DSO-grade hematite at Robinson Range in the emerging mid west iron province. Exploration target 100Mt**
- **4 gold targets identified at Tibooburra NSW**
- **61,000oz gold resource outlined at Wilthorpe. Toll treat/heap leach**

COORARA IRON ORE



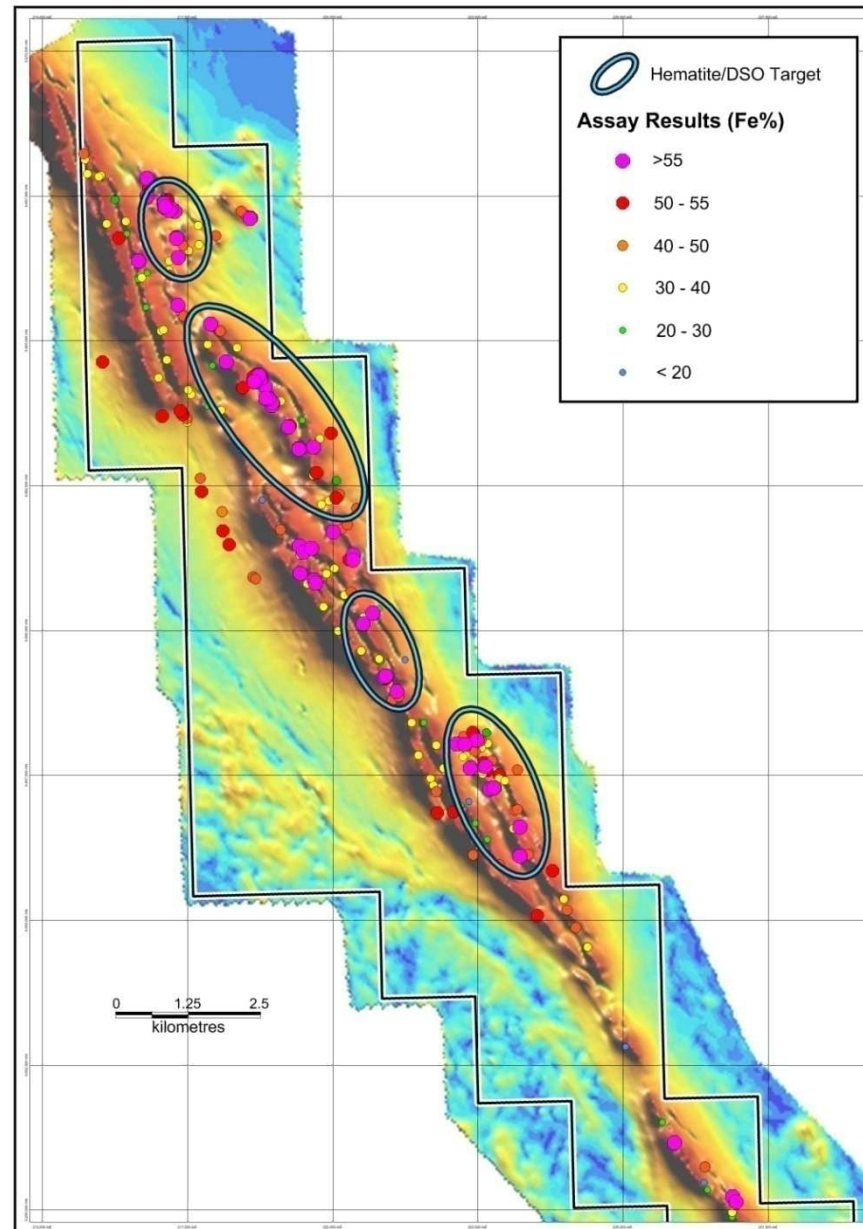
COORARA IRON



- **Target tonnage >1 Billion tonnes. 40km length**
- **Predominantly magnetite with hematite alteration**
- **New aeromagnetic survey**
- **Five hematite targets identified, target tonnage >100Mt**
- **Mapping and sampling in progress to define DSO hematite drilling targets**
- **Close to standard gauge rail giving access choices to Esperance or Kwinana ports**
- **Potential to add significant value to MEI**

Target tonnage is based on sampling, aeromagnetic models, density of 3.5 and depths of 100m. The potential quality and grade is conceptual in nature and there has not yet been sufficient exploration to define a mineral resource and it is uncertain if further exploration will result in the definition of a mineral resource.

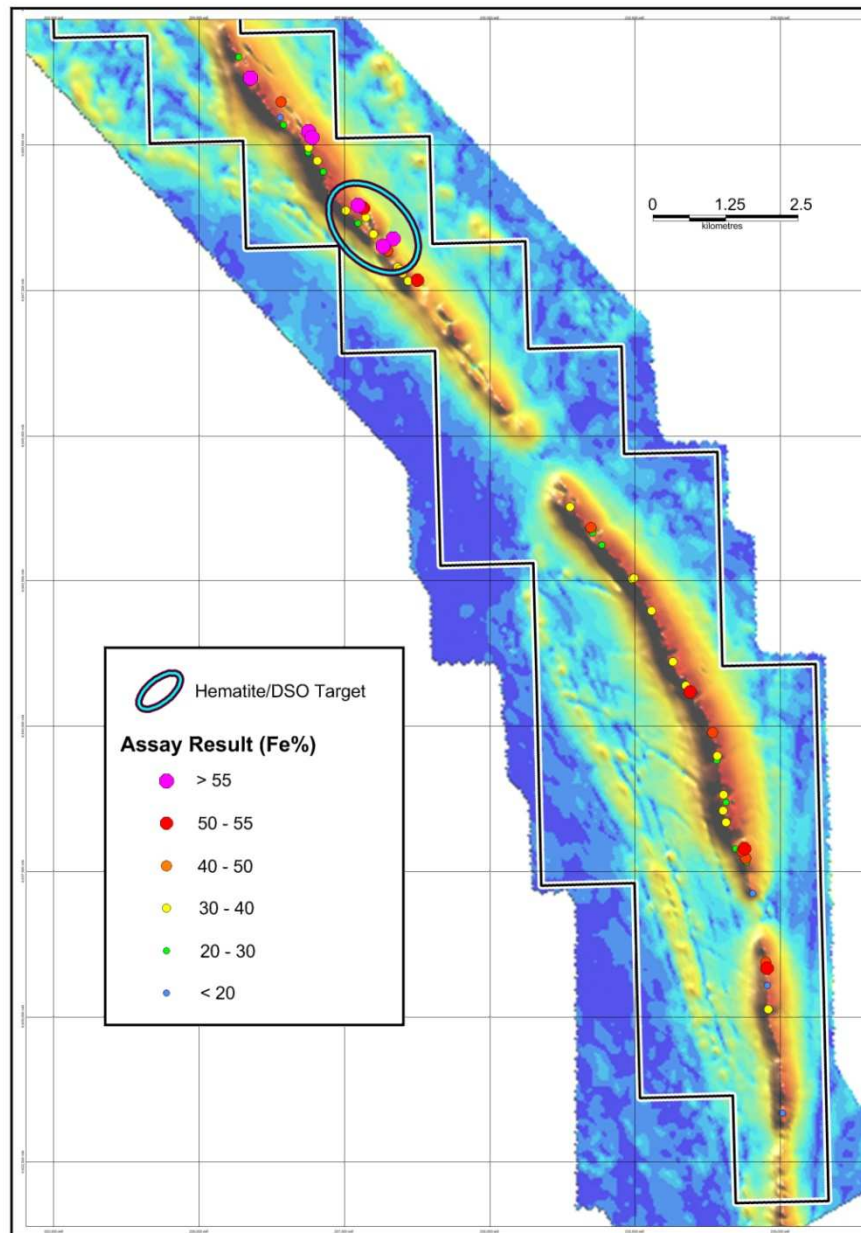
COORARA (north)





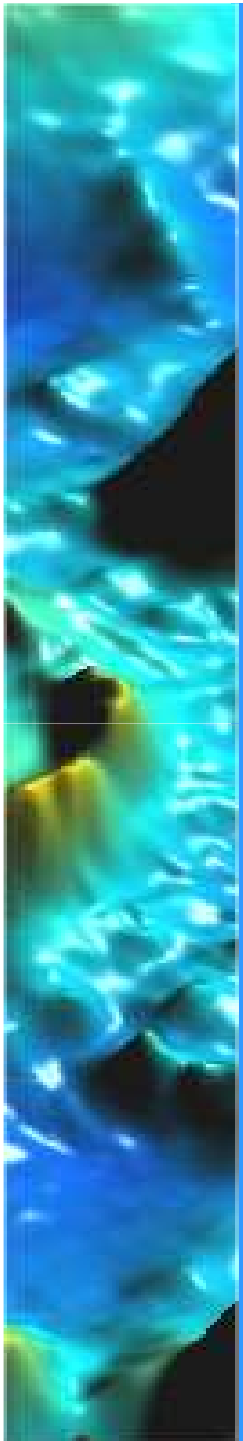
- **2,500 line km, 100m spaced aeromagnetic survey completed**
- **40km of iron formation interpreted from outcrop and aeromagnetics**
- **300 samples collected**
- **34% grades >50% Fe**

COORARA (south)

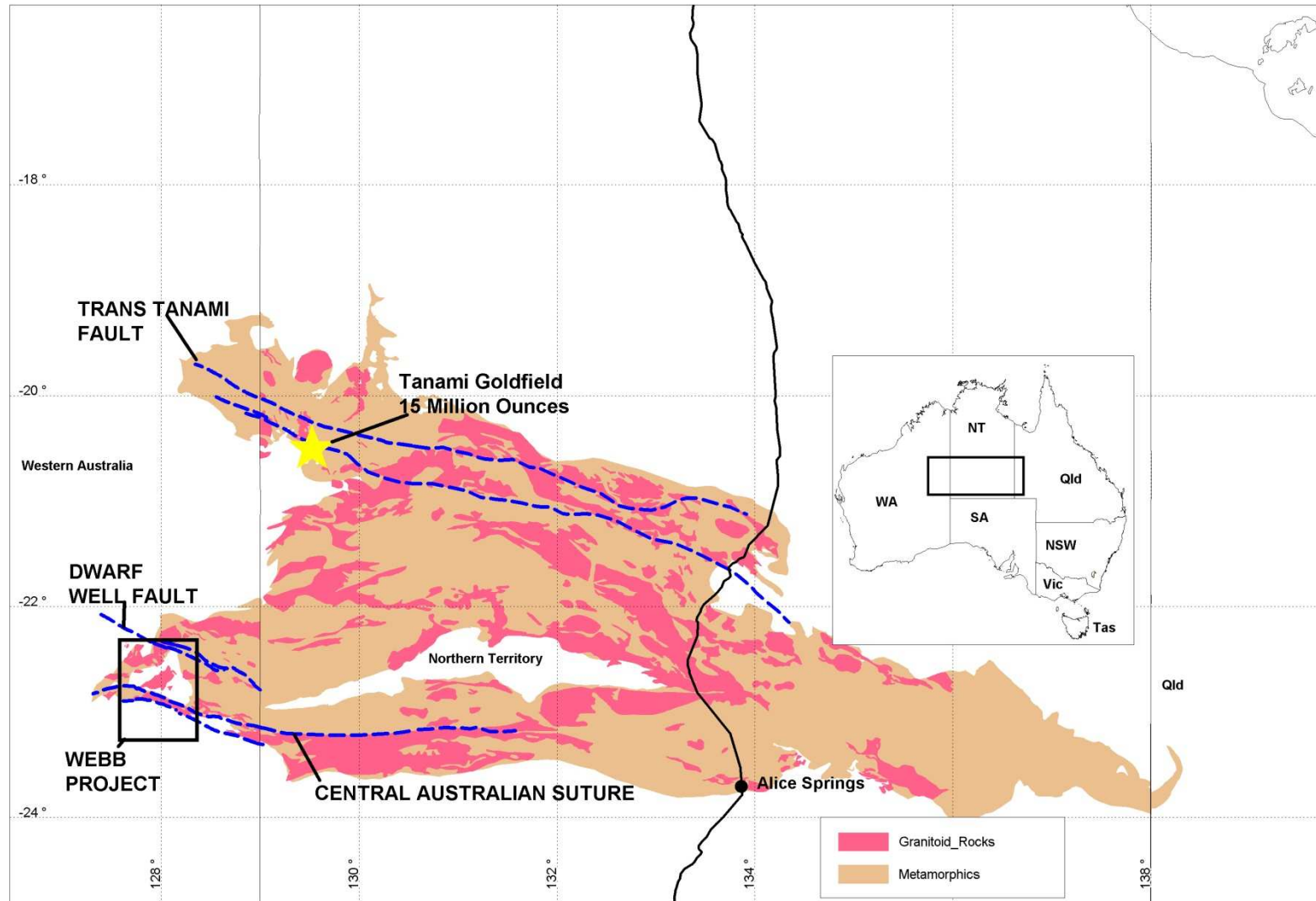


COORARA

Detrital Iron Ore 62.9%Fe

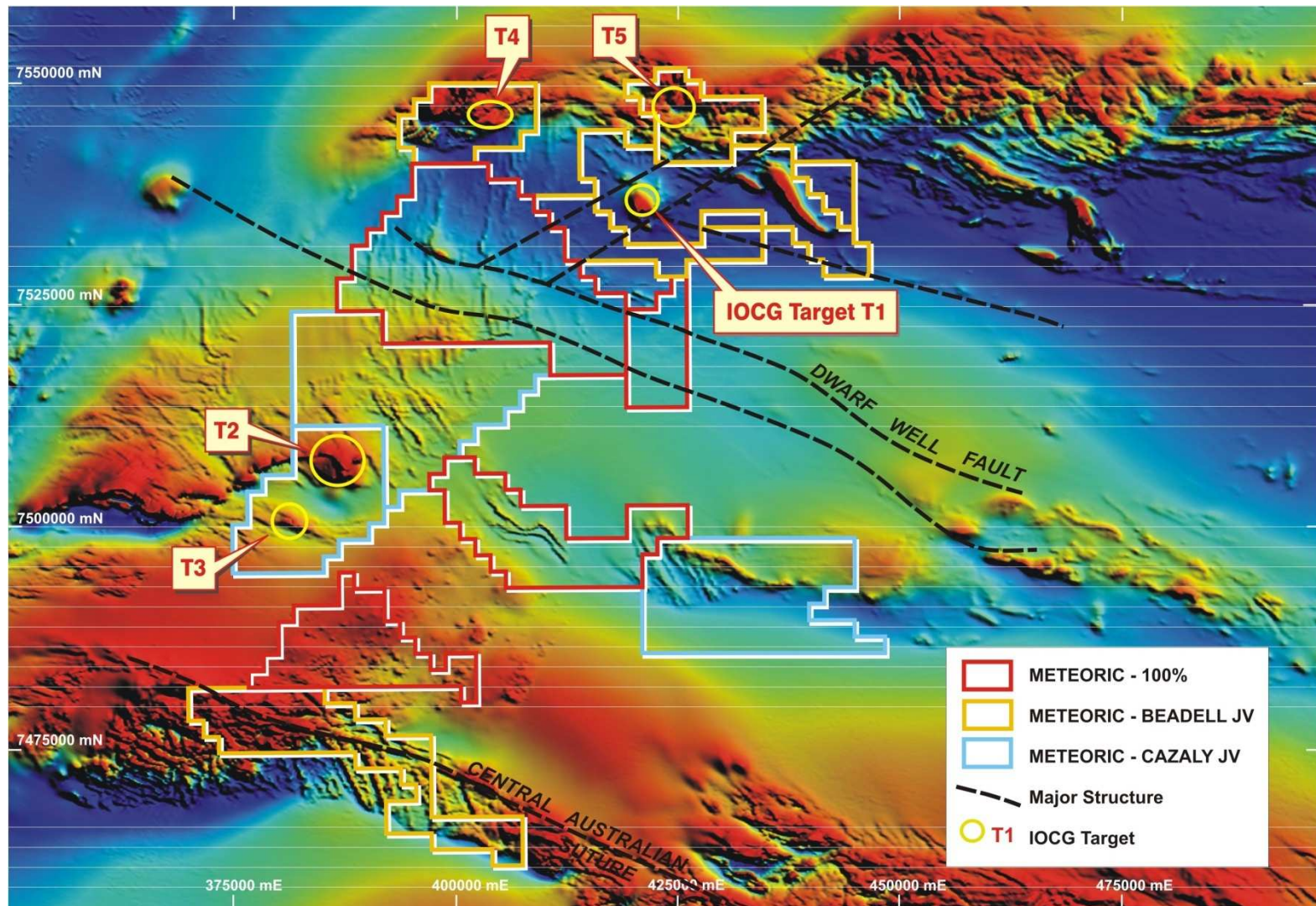


WEBB LOCATION



WEBB

IOCG Targets

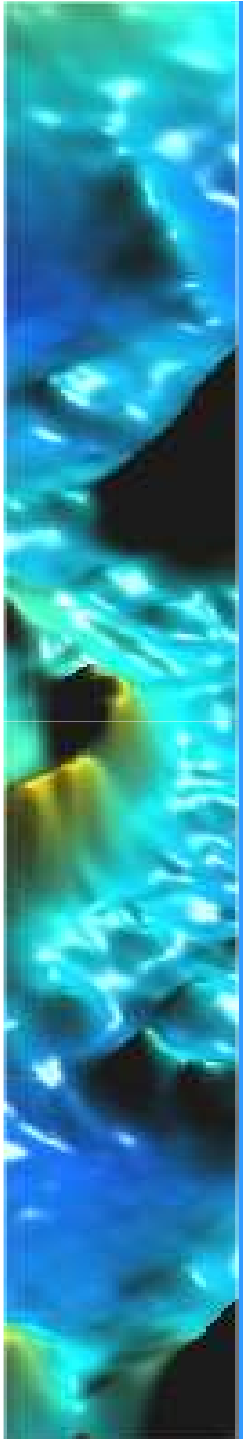




BEADELL JV

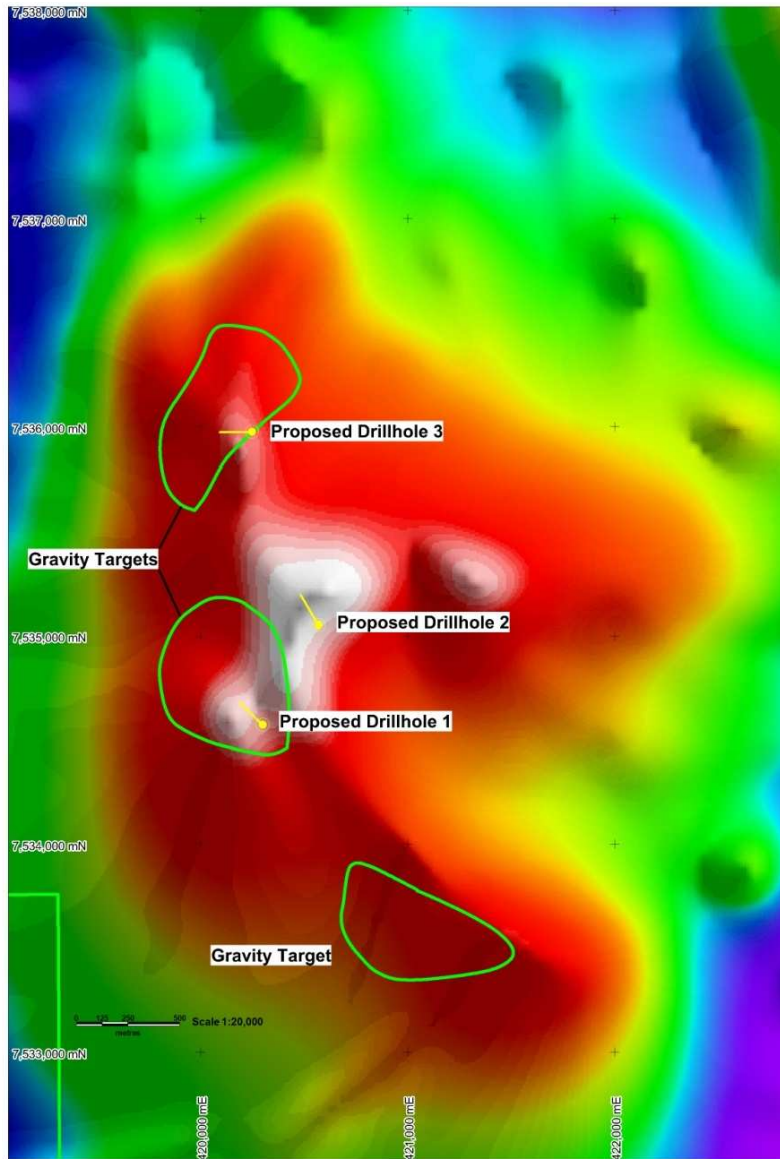
- **Meteoric 51%, right to earn 70% in 4 Beadell Resources ELs by spending \$800,000 in 5 years**
- **3 IOCG targets, T1 with anomalous copper and coincident gravity and magnetic anomaly; 2km x 2.5km magnetic anomaly (amplitude 1200nT) with gravity anomaly (>5mgal)**
- **Initial diamond drill hole RDD01 at T1 intersected minor hematite alteration and anomalous copper**
- **Strong isolated 5,000nT anomaly at T5**
- **Gravity surveys, sampling and drilling planned at T4 and T5**

BEADELL JV T1



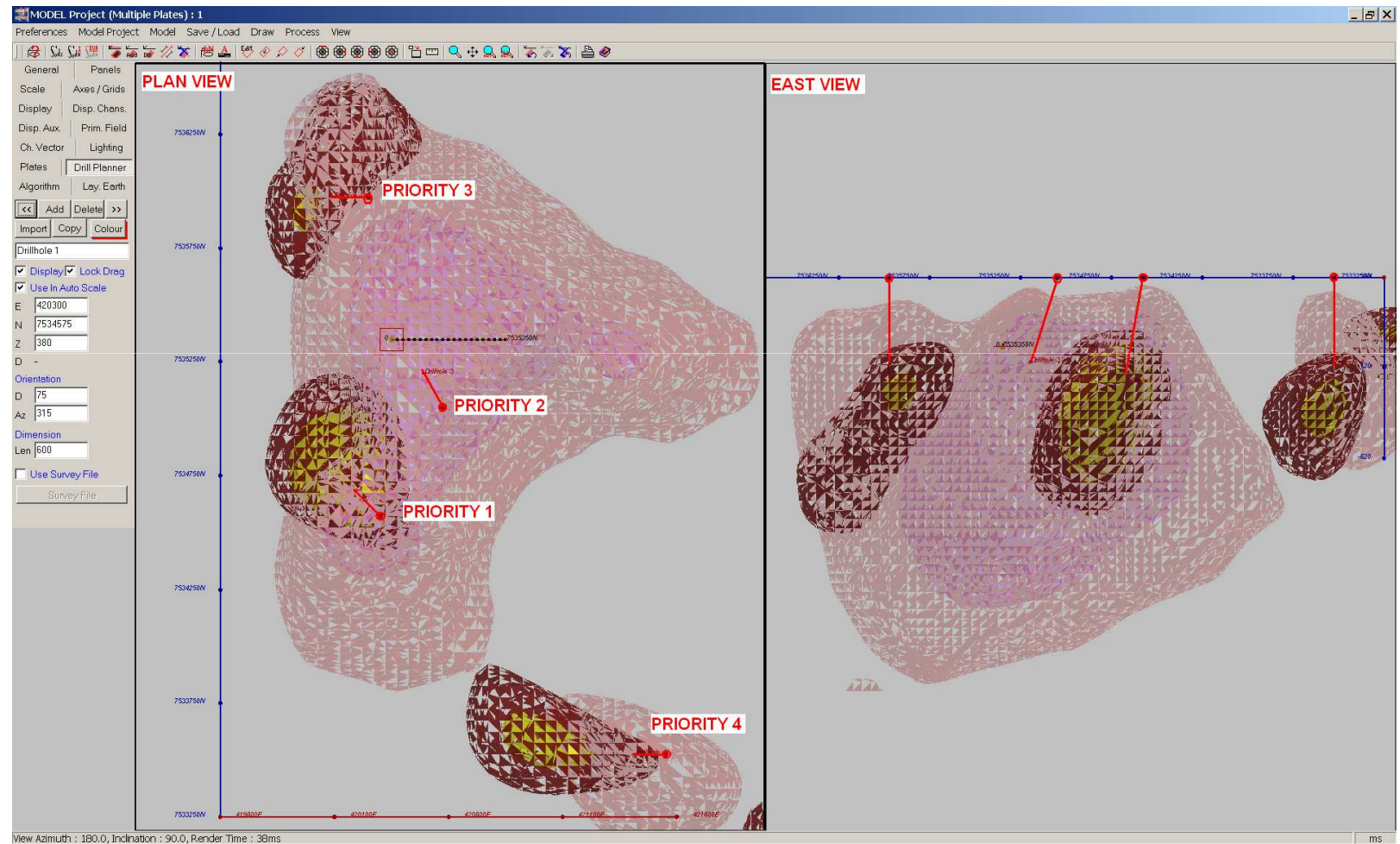
T1 IOCG TARGET

Gravity and New Magnetics

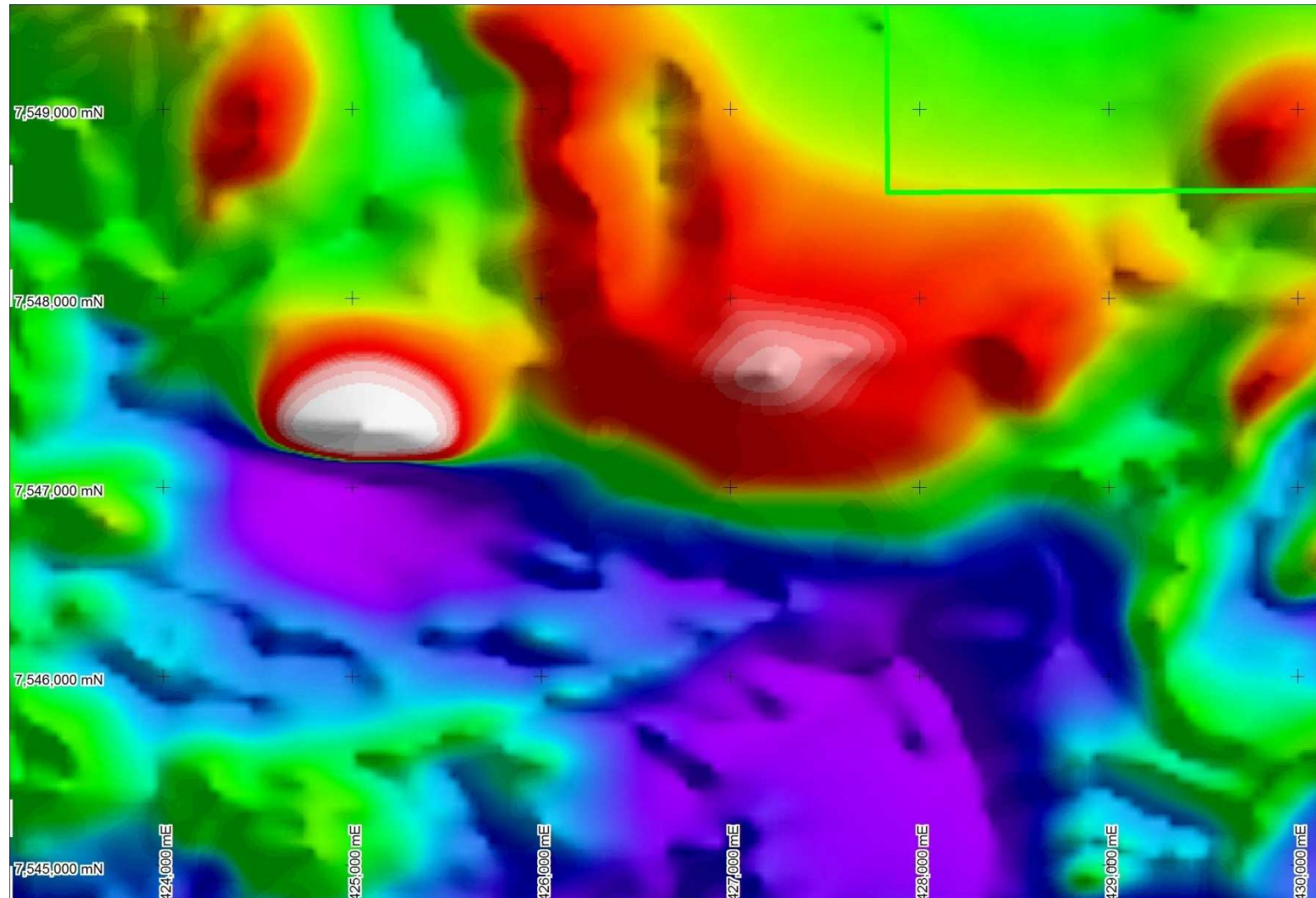


T1 IOCG TARGET

Gravity and Magnetic Model



T5 IOCG TARGET New Aeromagnetics

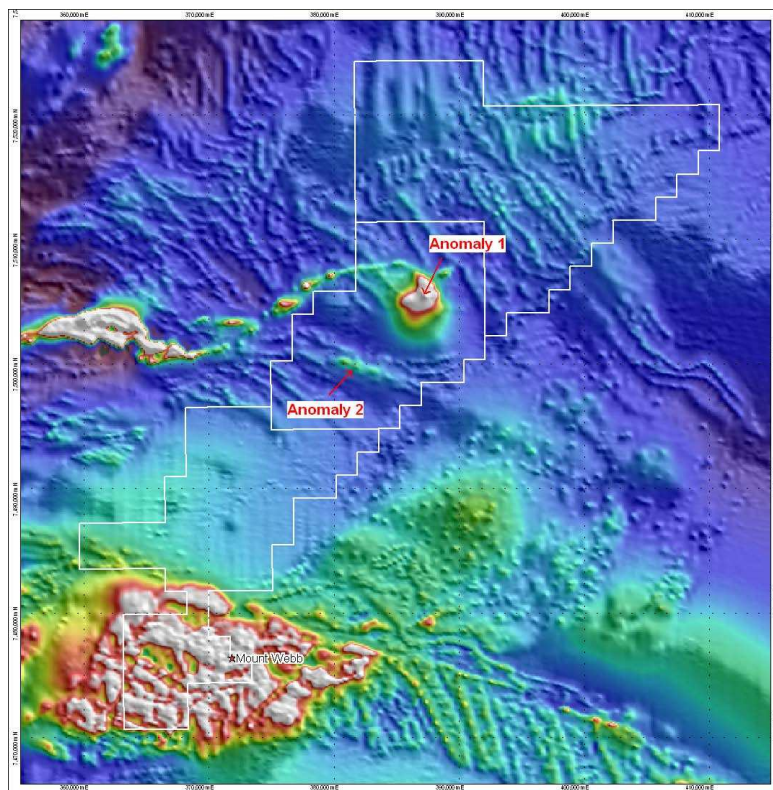




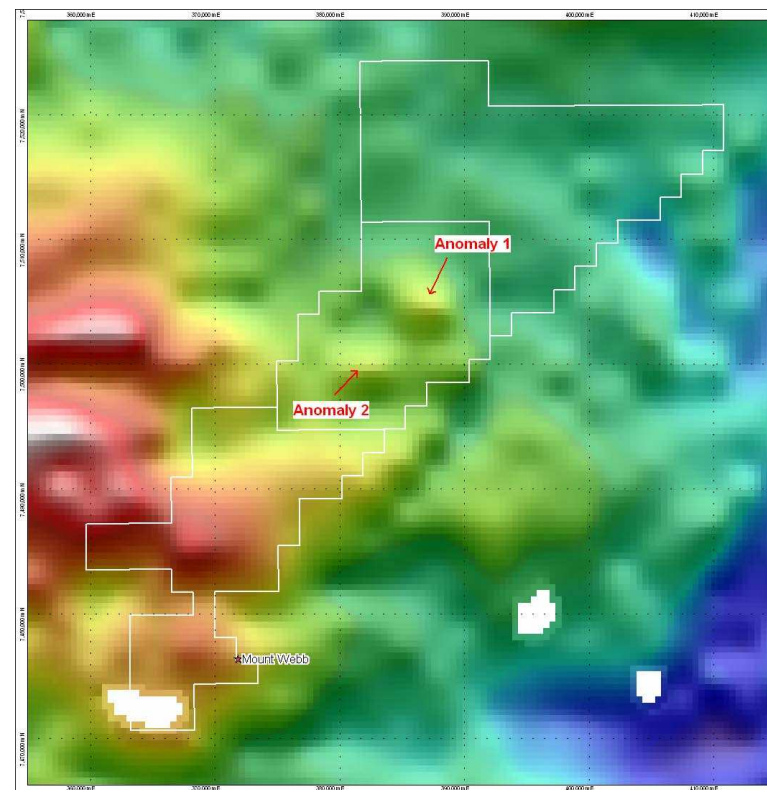
CAZALY JV

- **Meteoric right to earn 70% in 3 Cazaly Resources ELs by completing 1,000m of drilling within 3 years**
- **2 iron oxide-copper-gold (IOCG) targets on granted tenement**
- **Major coincident gravity and magnetic anomaly (T2); 3km x 3km magnetic anomaly (amplitude 1100nT) with gravity anomaly (4mgal), compares favourably with the Carrapateena copper-gold deposit (200nT and 2mgal)**
- **Drilling planned**

CAZALY JV



Aeromagnetics



Gravity

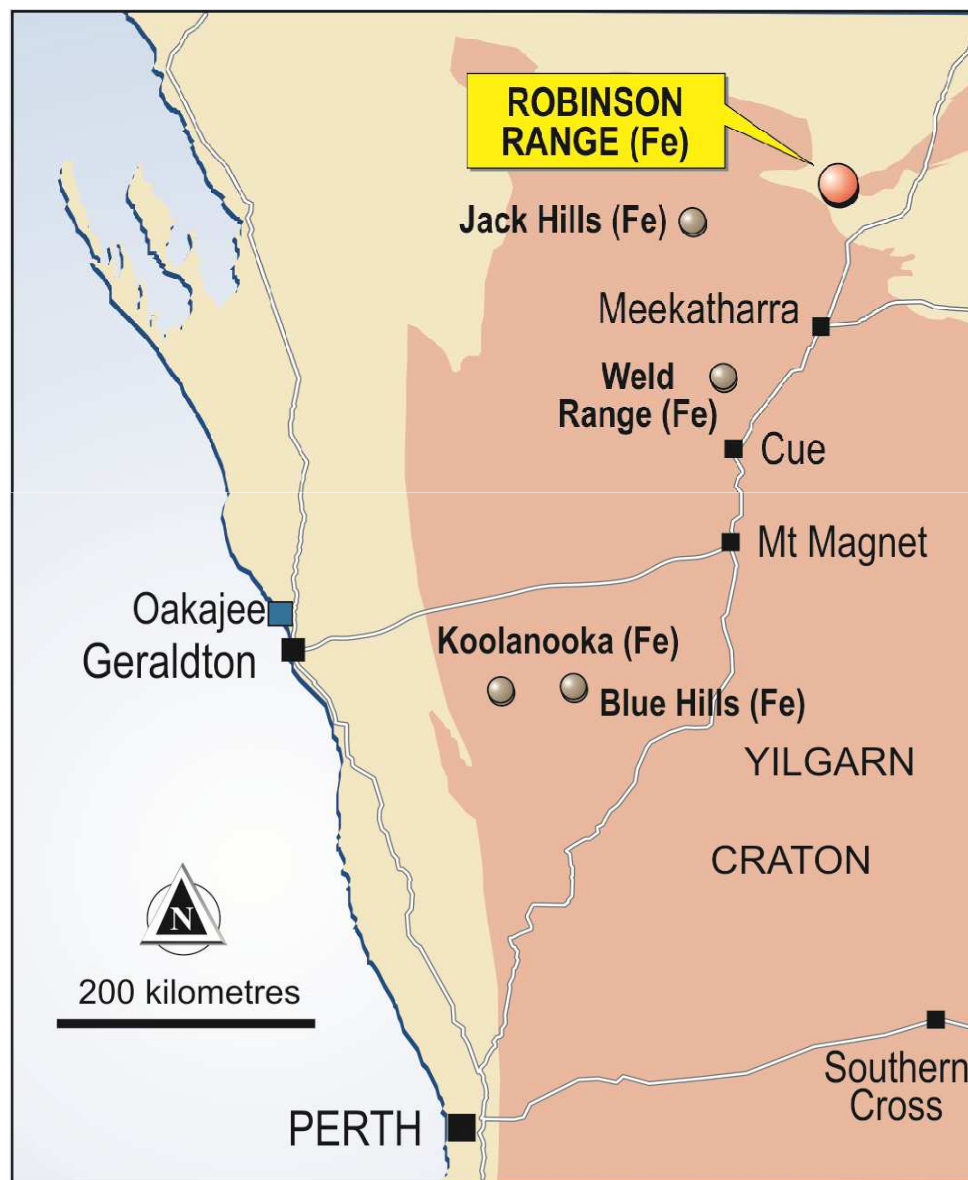


ROBINSON RANGE IRON PROJECT

- **50sq km of tenements**
- **13km of iron formations**
- **Hematite and hematite-goethite in outcrop up to 62%Fe**
- **Low impurities**
- **Aeromagnetics indicate iron formations may extend under cover**
- **Heritage agreement signed, paving way for access**

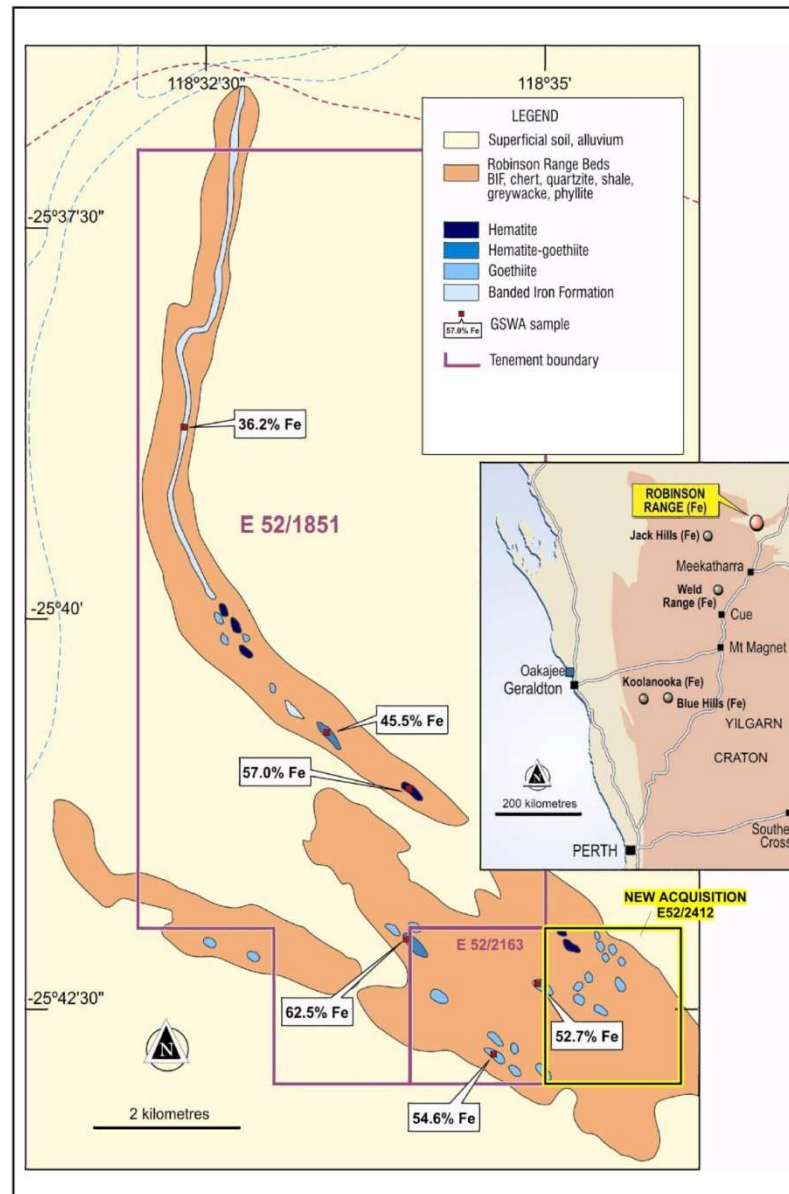
ROBINSON RANGE

LOCATION



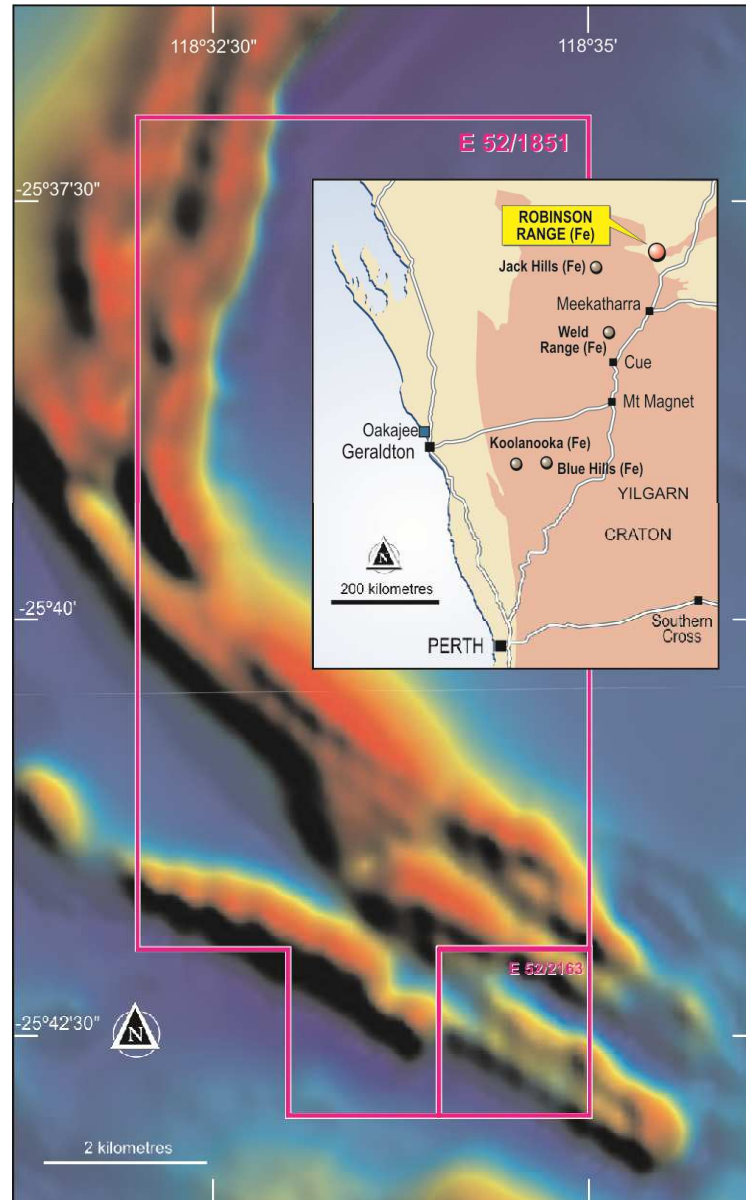
ROBINSON RANGE

GEOLOGY AND SAMPLING



ROBINSON RANGE

AEROMAGNETICS



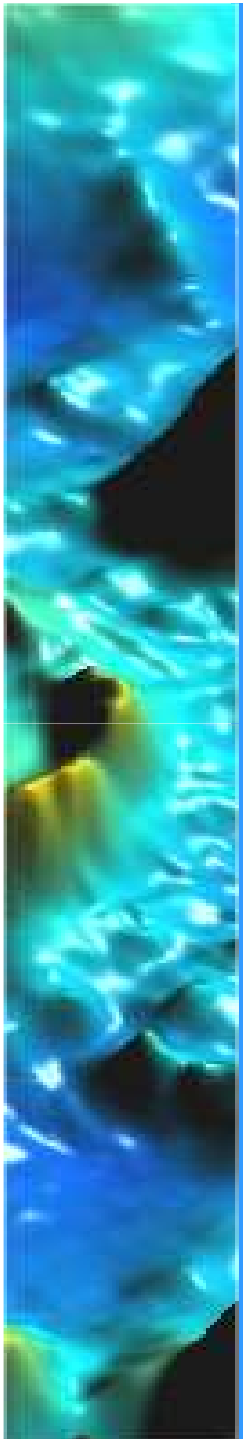
ROBINSON RANGE



**30m sample of
hematite-goethite
averaging 58.2%Fe**



**Ironstone hills
extending into new
acquisition**

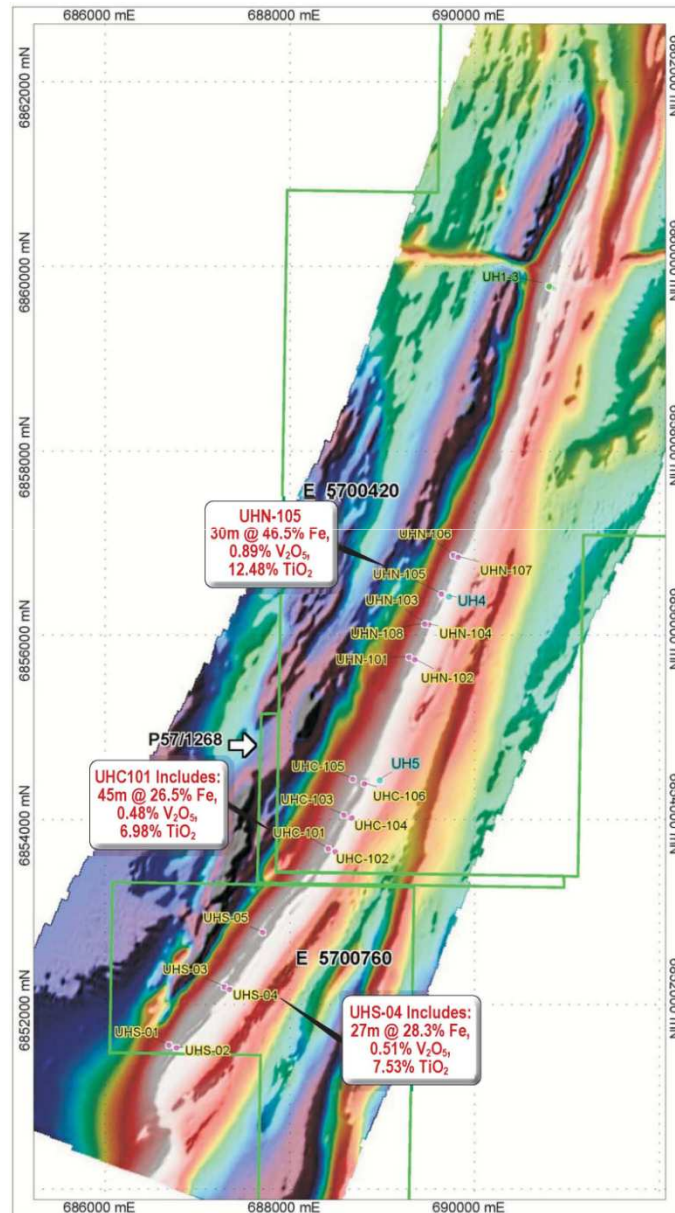




UNALY HILL SOUTH

- **180Mt target at Black Ridge Mining's (BRD) magnetite-vanadium-titanium at Unaly Hill**
- **Favourable metallurgical (DTR) test results**
- **2km strike extension on Meteoric tenement to south**
- **BRD earning up to 70% for \$1.5M in 4 years**
- **BRD drilling confirms encouraging magnetite and vanadium grades**

UNALY HILL SOUTH



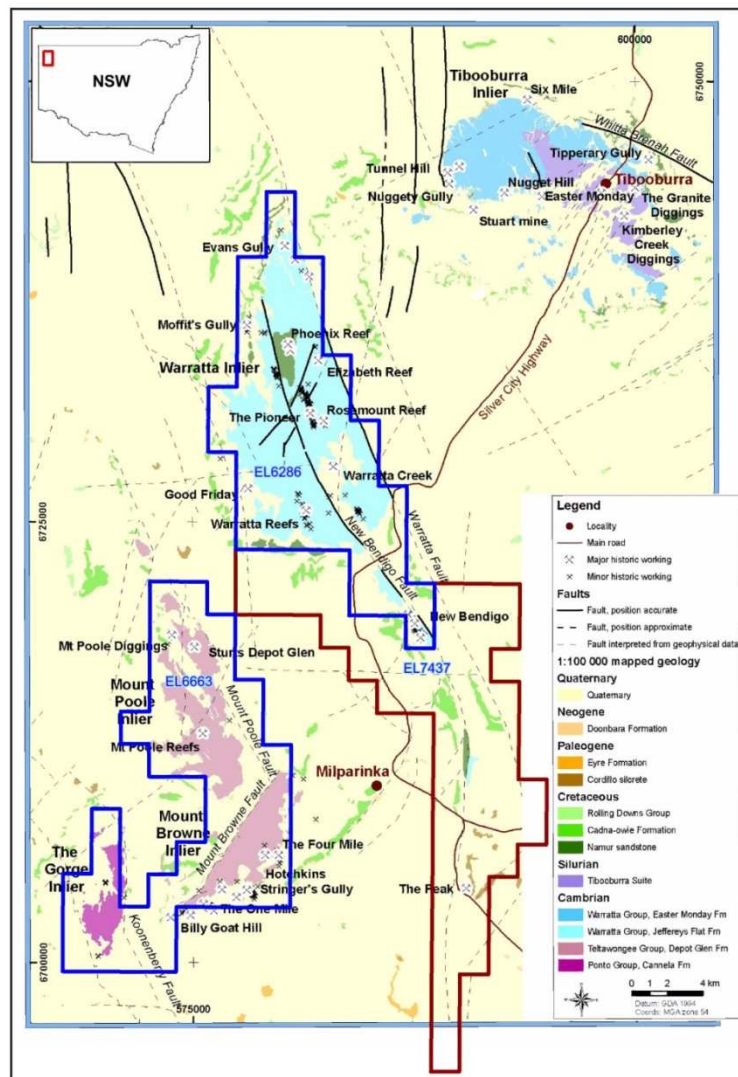
- **Hole UHS-02 - 33m**
@ 27.9% Fe, 0.5% V₂O₅ and 7.3% TiO₂
- **Hole UHS-04 - 27m**
@ 28.3% Fe, 0.5% V₂O₅ and 7.5% TiO₂



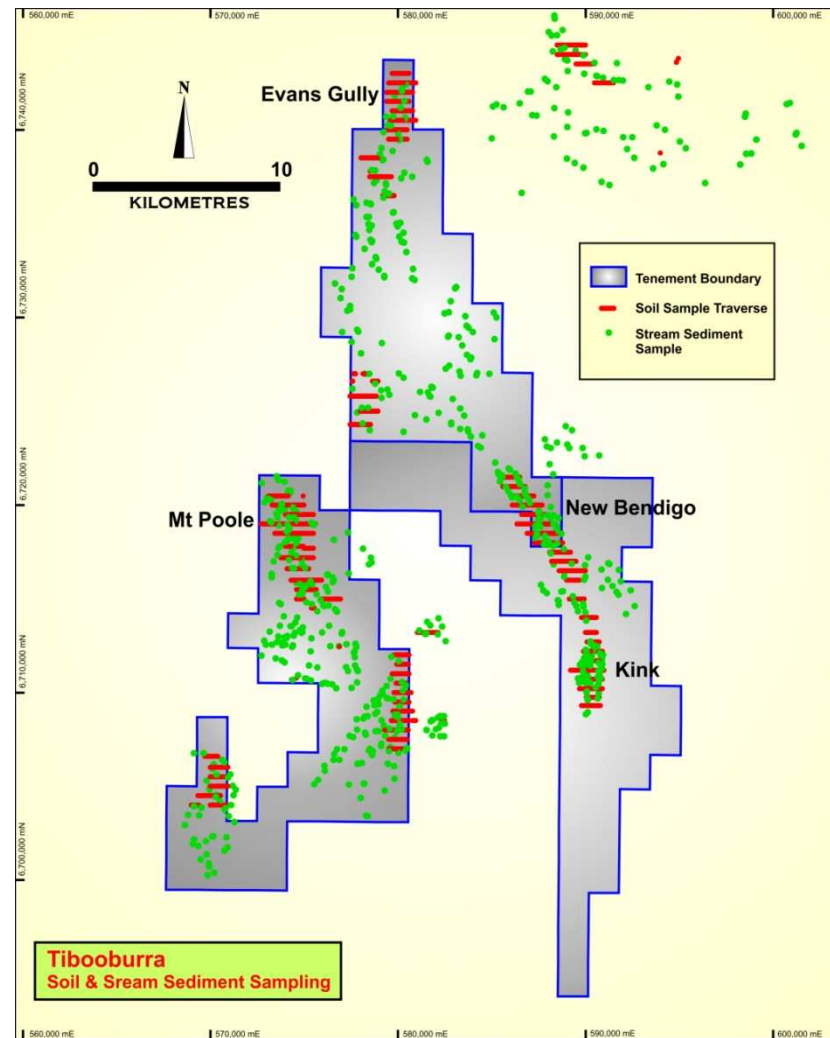
TIBOOBURRA

- **Meteoric right to earn up to 75% for \$1.5M expenditure within 6 years**
- **3 ELs covering 450sq km of the historic Tibooburra goldfield, NSW**
- **Numerous quartz veins with parallels to the Victorian goldfields (NSW Geol Survey) and no modern exploration**
- **Potential for high grade veins and bulk tonnage stockworks**
- **7km (cumulative) of gold anomalies identified to date**
- **Follow up sampling in progress to define targets for drilling in the new year**

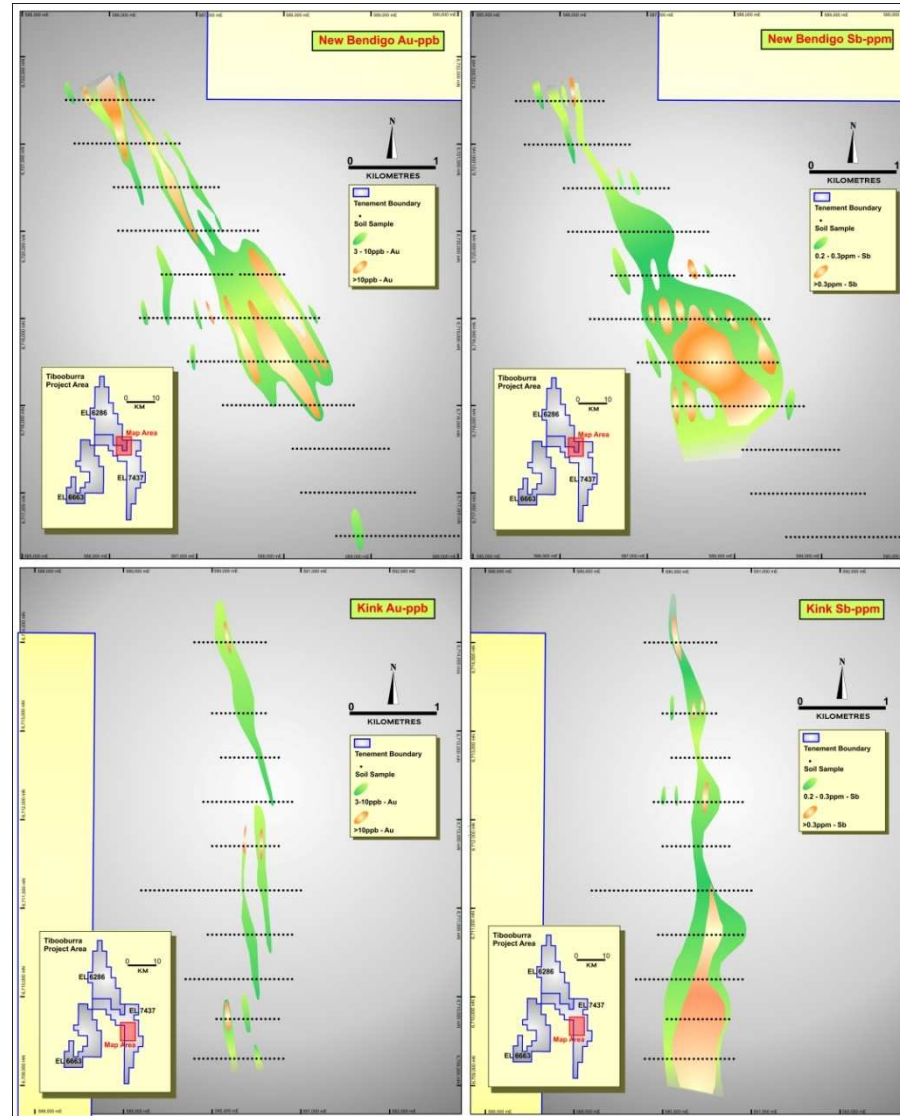
TIBOOBURRA



TIBOOBURRA



TIBOOBURRA



TIBOOBURRA



New Bendigo Gold diggings



New Bendigo Stockwork



Kink Quartz Flats



Evans Gully Quartz Veins



WILTHORPE

HARRODS

- **Sediment-hosted sheeted veins and stringers with high nugget factor**
- **2.4km x 500m bedrock gold anomaly**
- **Harrods Central and Harrods South resource totals 61,600ozs Au**
- **Concept study indicates potential +10,000ozs mineable at US\$800/oz and 85c ex rate (A\$941/oz) cf. current US\$1350/oz (A\$1370/oz)**
- **Additional resource potential between Harrods Central and Harrods South**
- **Possible satellite to the 1Mtpa Fortnum treatment plant situated within 25km or possible heap leach**

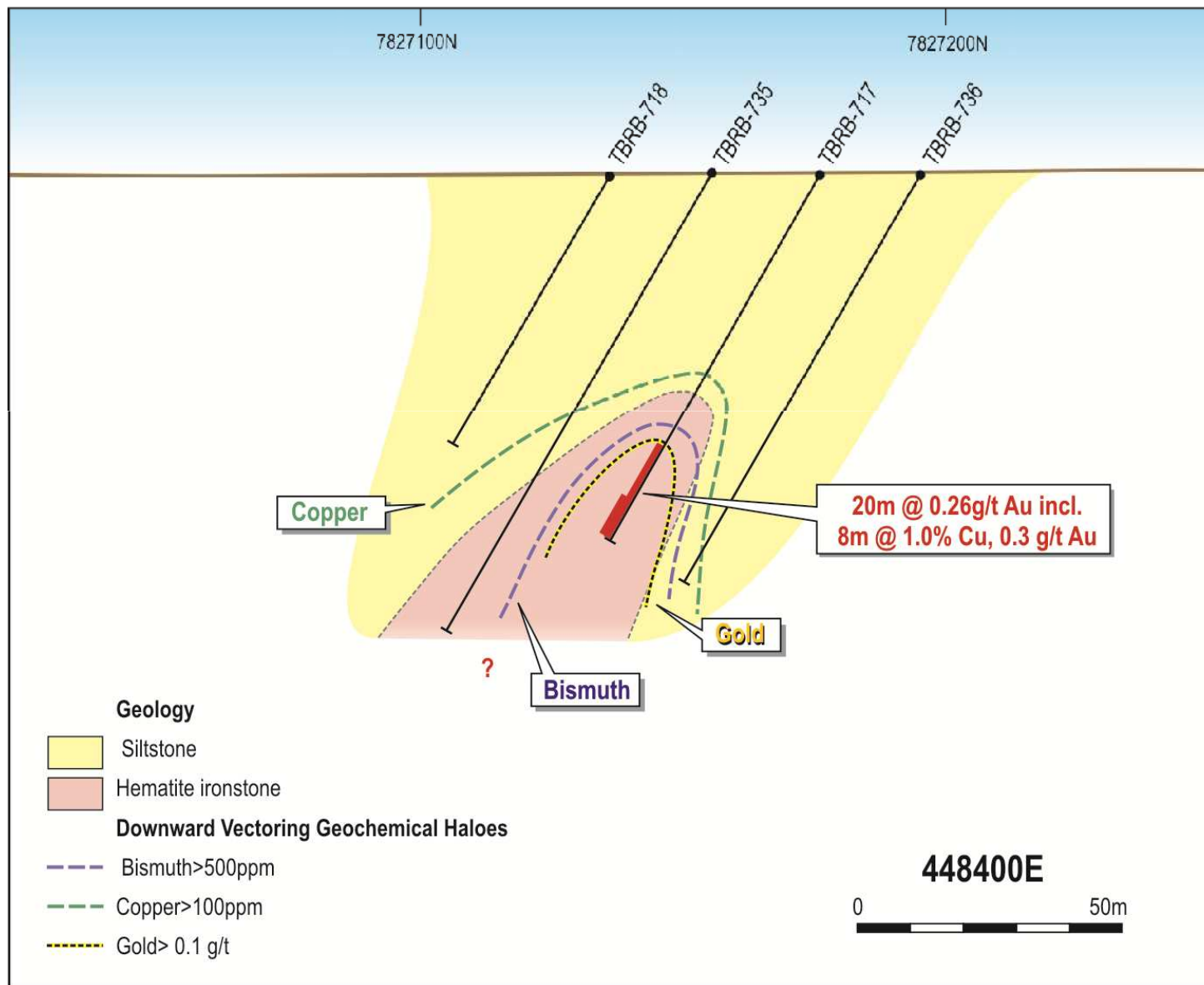


BARKLY JV

- **Meteoric 70%, Emmerson Resources earning back (\$0.9M to claw back to 70%)**
- **Eastern extension of 4km of historical Golden Mile workings. Contains Perseverance ironstones, 3m @ 43.2g/t Au (CLC exclusion zone)**
- **Gravity and ground magnetic surveys defined coincident anomalies at Perseverance - Bluebird**
- **600m-long Cu anomaly outlined at Bluebird**
- **2 copper-gold zones identified by RAB drilling with a best intercept of 8m @ 1%Cu and 0.3g/t Au at end of hole**

BARKLY JV

SECTION 448400



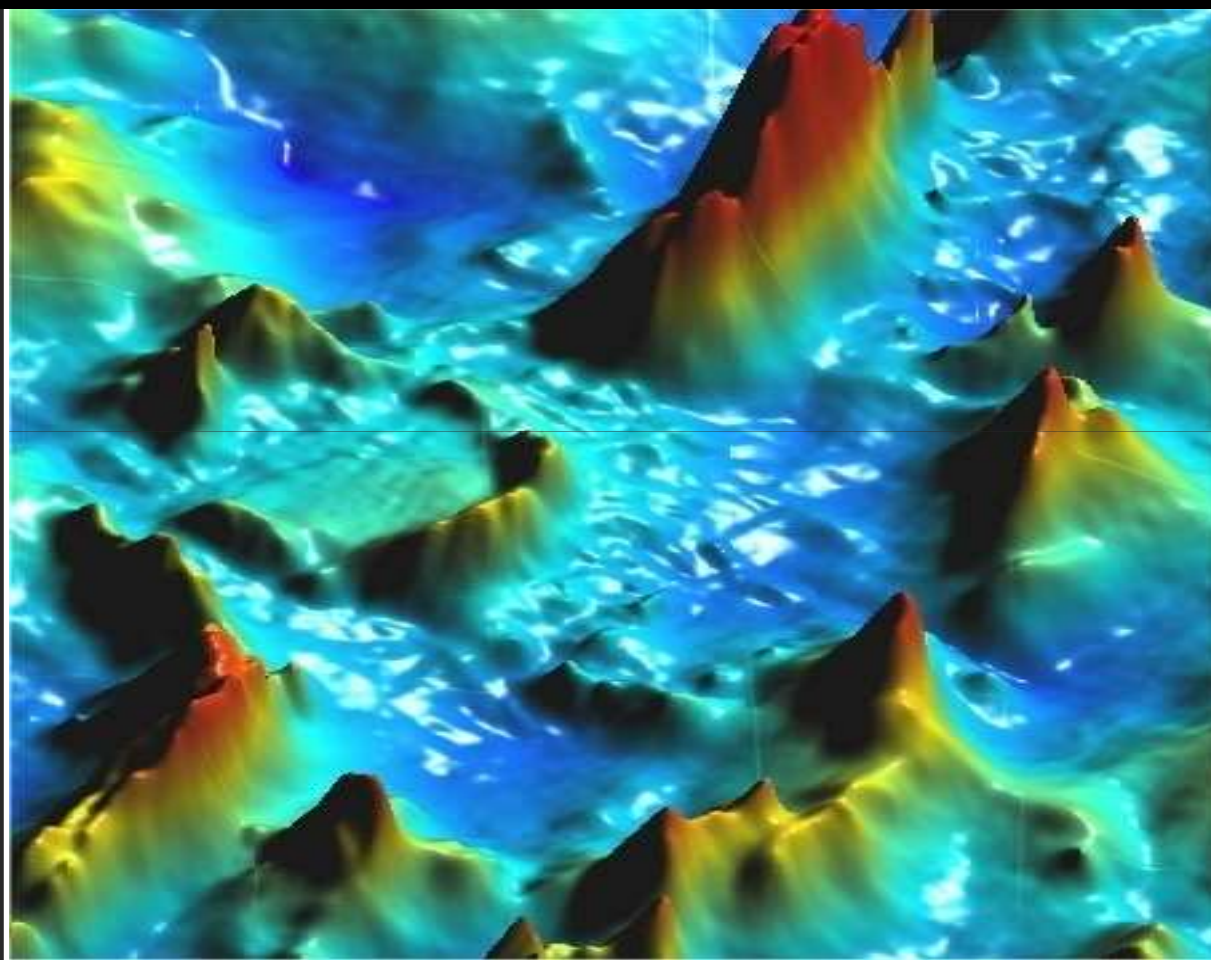


TIMETABLE

- **Nov - geological mapping, botanical and channel sampling at Coorara**
- **Dec - follow up geochemical sampling at Tibooburra gold targets**
- **Jan - drilling of 5 hematite targets at Coorara**
- **Feb - heritage survey at Robinson Range**
- **Mar - drilling follow up on Coorara hematite targets and initial drilling on 40km magnetite targets**
- **Mar - heritage and gravity surveys on T4 and T5 at Webb**
- **Mar/April – Tibooburra RAB drilling**



METEORIC RESOURCES



www.meteoric.com.au