

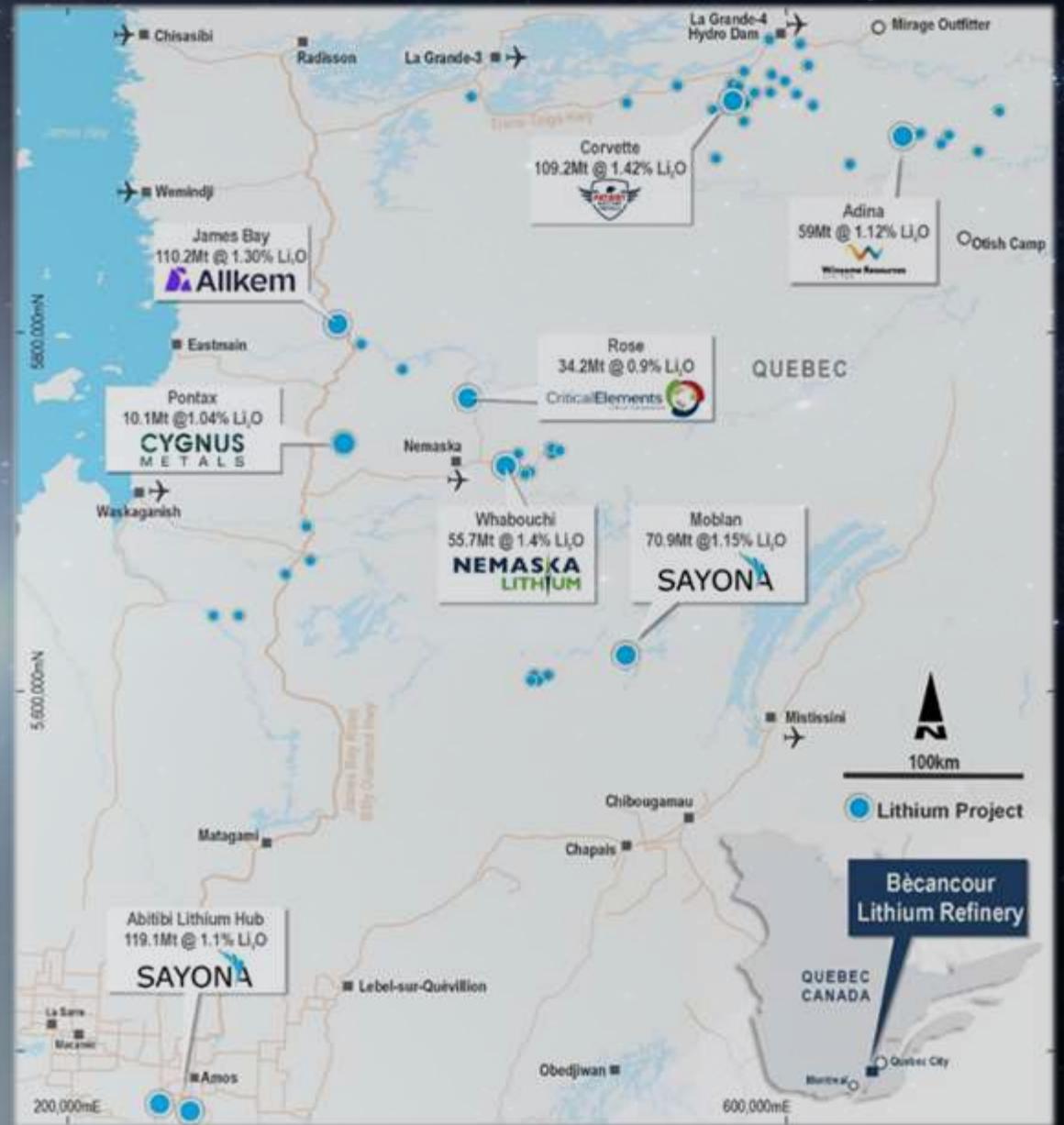


THE LITHIUM CONVERSION GAP

UPSTREAM [SUPPLY]

LITHIUM SUPPLY

- Quebec > 40 companies
- Lithium Resource > 500 Mt +1% Li₂O



MICHIGAN

GM General Motors

2024 - 50 GWh

LG Energy Solution

2025 - 25 GWh

STELLANTIS

2024 - 45 GWh

one

2024 - 20 GWh

Ford

2026 - 45 GWh

ONTARIO, CANADA

PowerCo

2027 -165 GWh

INDIANA

GM General Motors

2026 - 30 GWh

STELLANTIS

2025 - 33 GWh

TENNESSEE

GM General Motors

50 GWh

Ford

2025 - 86 GWh &

2025 - 23 GWh

TEXAS

Redwood 199 GWh &
2025 - 50 GWh

KENTUCKY

Ford 2025 - 86 GWh

QUEBEC, CANADA

GM General Motors

2025 -165 GWh

QUEBEC, CANADA

northvolt

2026 - 30 GWh

Ford

45 ktpa

Quebec
Canada

Quebec
City
SEE INSERT

Montreal

Toronto

OHIO

GM General Motors

35 GWh

Honda

2025 - 40 GWh

SOUTH CAROLINA

Toyota

2025 - 40 GWh

GEORGIA

Hyundai

2025 - 35 GWh &

2025 - 30 GWh

SK Battery America

22 GWh

SOUTH CAROLINA

aesc

2026 - 30 GWh

REDWOOD

2025 - 100 GWh

Hyundai

2025 - 30 GWh

www.aesc.com

DOWNSTREAM [DEMAND]

LI BATTERY DEMAND

- 20 Major Manufacturers
- >1,000 GW battery Capacity
- 850,000 tpa Lithium Chemicals



THE LITHIUM CONVERSION GAP

No Current Lithium Converters
Only 100,000 tpa planned 2028



Lithium Universe
LIMITED

CLOSING THE LITHIUM
CONVERSION GAP



Problems with Filling the Gap

- Lithium conversion, complex chemical business
- Many failures, and technical difficulties
- Even with existing Lithium producers
- Takes many years to establish and ramp up
- Need expertise with proven track record



Experienced Operators



Proven Technology

Iggy Tan, Chairman

Experienced Li Operator

- Ran Greenbushes Li in 1995, commissioned Li Carb Plant
- First mining executive - lithium-ion battery future
- First large scale integrated mine to refinery project
- Built Mt Cattlin Spodumene Mine (137 ktpa)
- Built Jiangsu Lithium Carbonate Plant (17 ktpa)
- GXY MCap <\$10 m (left 2013) - \$2.5b at merger



Greenbushes Lithium Veteran



**Patrick Scallan OAM
Non-Executive Director**

- Ran Greenbushes Mine for 25 years
- Oversaw expansion from 200 Ktpa to 1.4 Mtpa
- Largest spodumene & highest grade operating mine in the world

International Downstream Expert



**Dr Jingyuan Liu PhD
Non-Executive Director**

- Ex-Galaxy GM Technology
- Leading technical expert in the Lithium Industry
- Designed & Operated world-class Jiangsu Lithium Carbonate Refinery



Terry Stark
Head of Mining
Ex Galaxy
GM Operations



Roger Pover
Head of Processing
Ex Galaxy Plant Manager



Huy Nguyen
Engineering Manager
Ex Mt Cattlin Construction



John Loxton
Head of Li Refinery
Ex Hatch Li Carb Plant

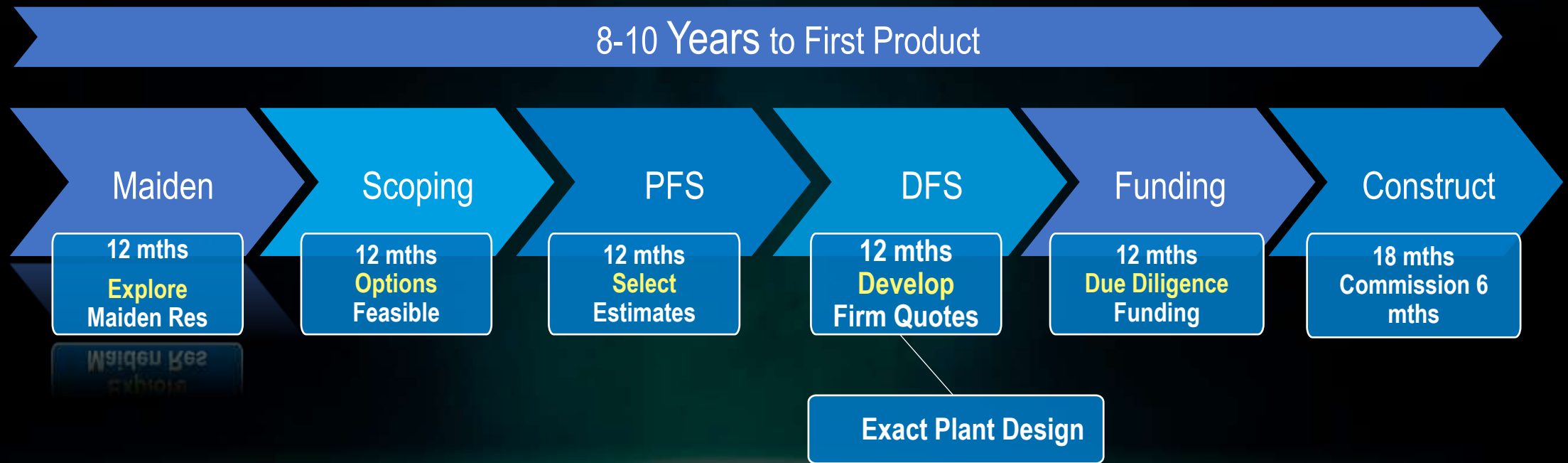


Lithium Dream Team



John Sobolewski
Chief Financial Officer
Ex Galaxy CFO & Co Sec

Typical Li Mine Development



Dream Team Track Record

Mt Cattlin Spodumene Project





Mt Cattlin Spodumene Mine



Tianqi Kwinana LiOH



- 5 Years so far
- Capital Cost Blowout
- A\$400m to A\$770m
- FY 23 - 8% of design

Albemarle Kemerton LiOH



- Construct 2019 (5 years)
- 18 mth commissioning
- Still <50% of design rate
- Parachuting Chinese operators

Failed Canadian Li Projects

North American Lithium



- Started 2014
- Spent circa CAD 250m
- Produced 109 t LC
- Bankruptcy 2015

Nemaska Lithium



- DFS completed 2018
- Spent CAD 411 m
- Failed to start up 2019

Why have these projects failed?

- Lack of operating direction at design
- Limited management oversight at design
- Limited commissioning experience

Our Lithium Dream Team are Operators



Dream Team Track Record

Jiangsu Li Carbonate Plant





Jiangsu Lithium Carbonate Plant



- Spodumene price - US\$ 260/tonne then
- FY 22-23 EBITDA record of US \$516m
- 130,984dmt of spod 5.3 %Li₂O



**Mt Cattlin Spodumene
Operation**

Successful at Start-Ups

- Largest plant in the world at the time
- Best quality Li Carbonate today
- Li Carb price then US\$ 6,000/tonne



**Jiangsu Lithium Carbonate
Plant**

Canada Forcing Downstream Solution

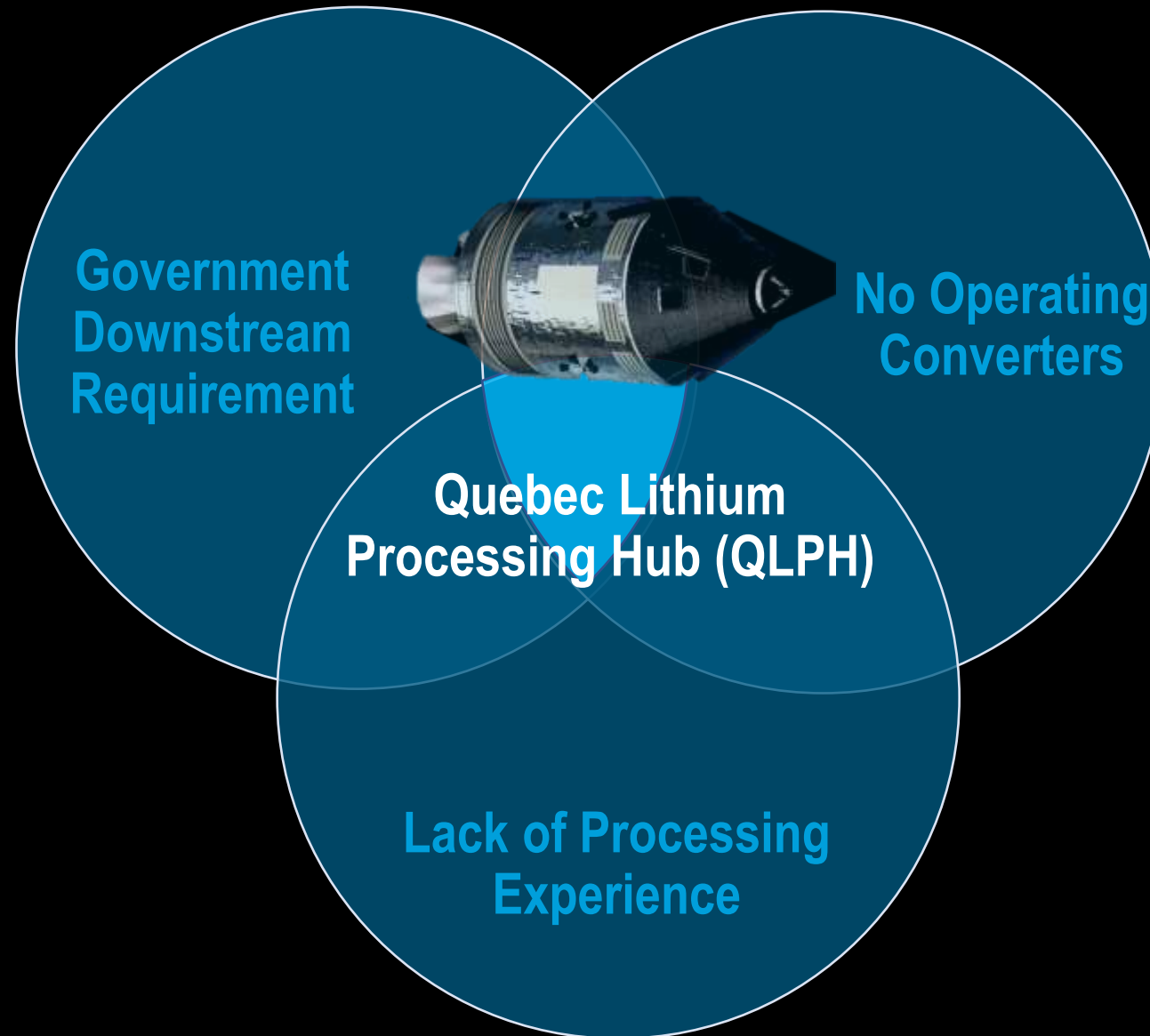
- Ordered Sinomine to divest from Power Metals Corp
- Relinquish spodumene off-take contract
- Citing “multi-step security review”
- Established automotive industry → EVs
- Local battery supply chain with proactive government

Canada orders China to divest from country's mining companies

Move comes after 'multi-step' review by Canada's national security and intelligence agencies



Solving Challenges for Canada



Quebec Lithium Processing Hub (QLPH)

Mine to Battery Grade Lithium Carbonate Strategy

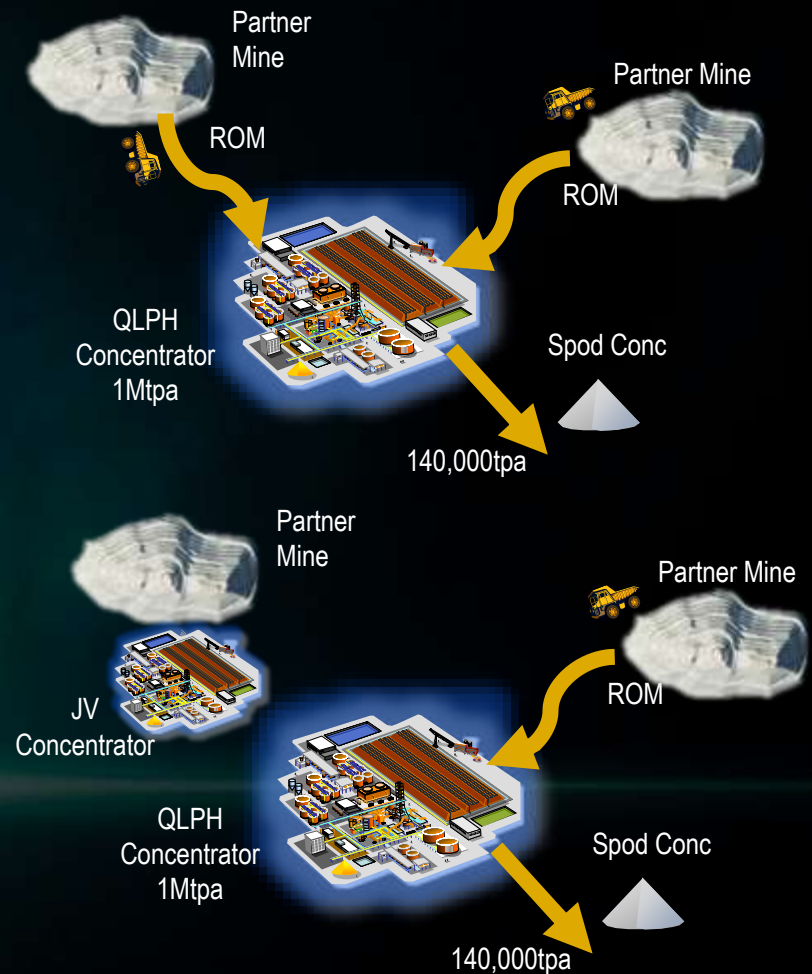


QLPH Concentrator

- Based on proven Mt Cattlin design
- 5 Year ROM off-take JV deal – local juniors
- Brings early cash flow for juniors to develop mines

Concentrator JV

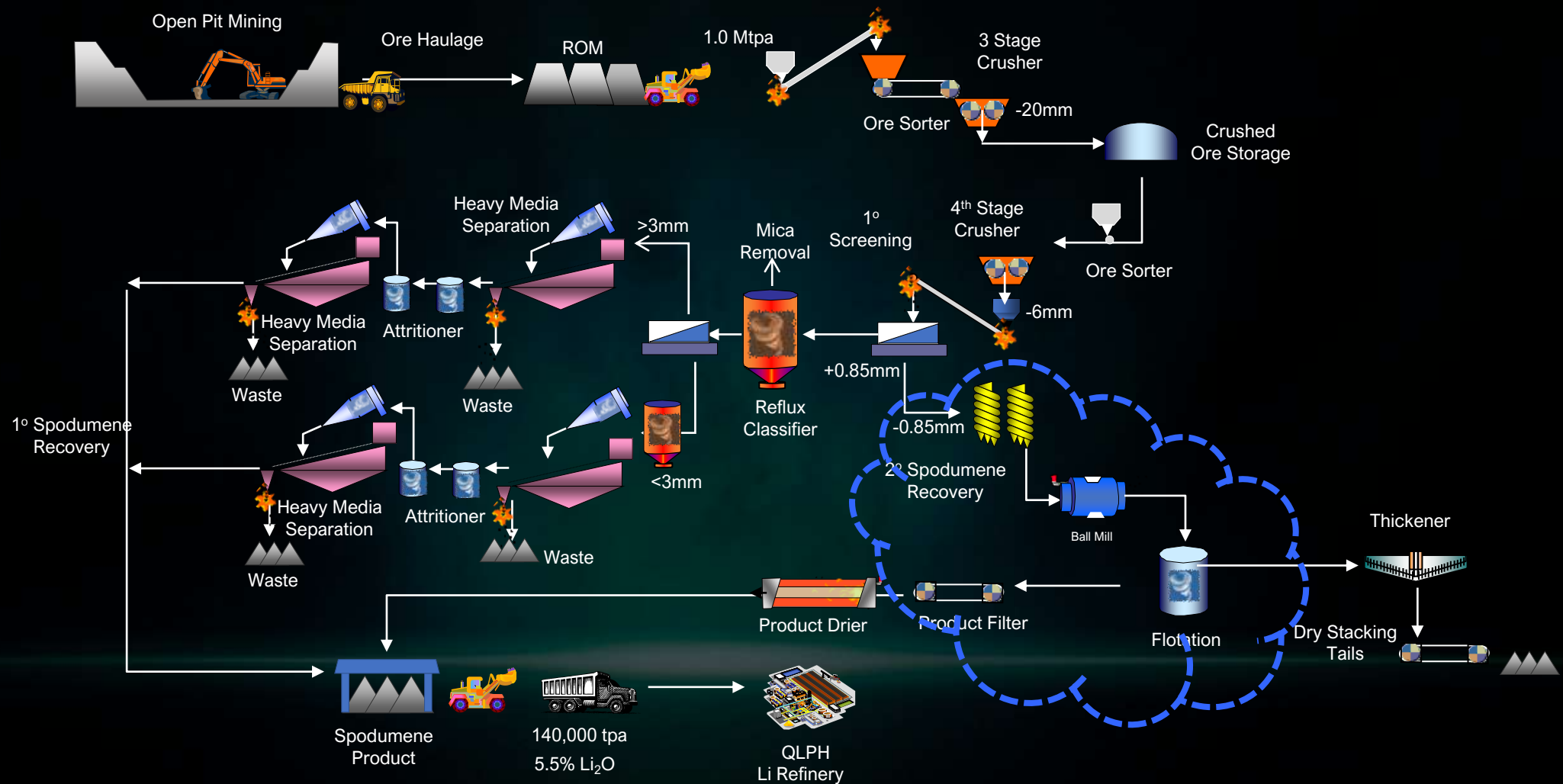
- After 5 years JV builds a concentrator on their project
- Replicate QLPH concentrator
- Helps juniors become a concentrate producer



QLPH Concentrator Engineering Study

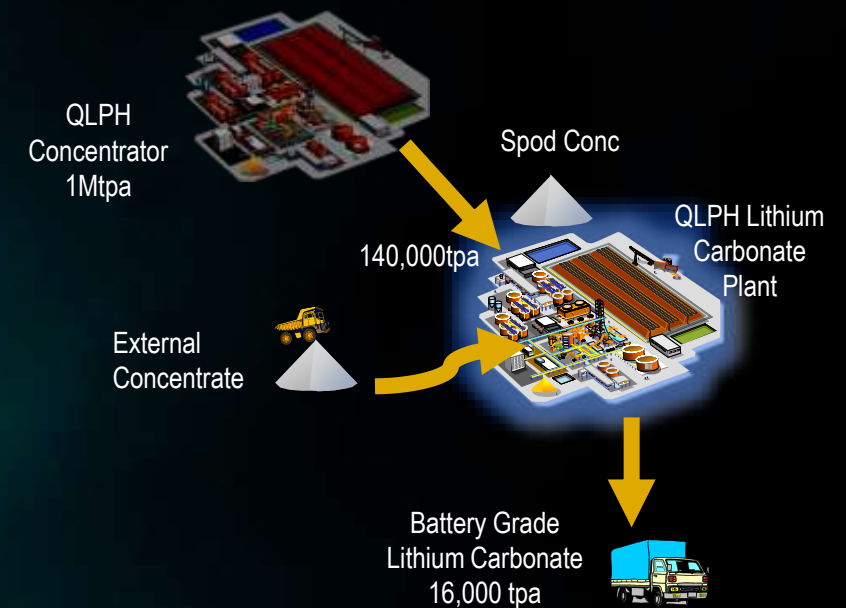
- Lithium experience – Bald Hill, Covalent, Core, James Bay
- Today's price for Mt Cattlin style concentrator in Canada
- DFS level of study





Battery Grade Lithium Refinery

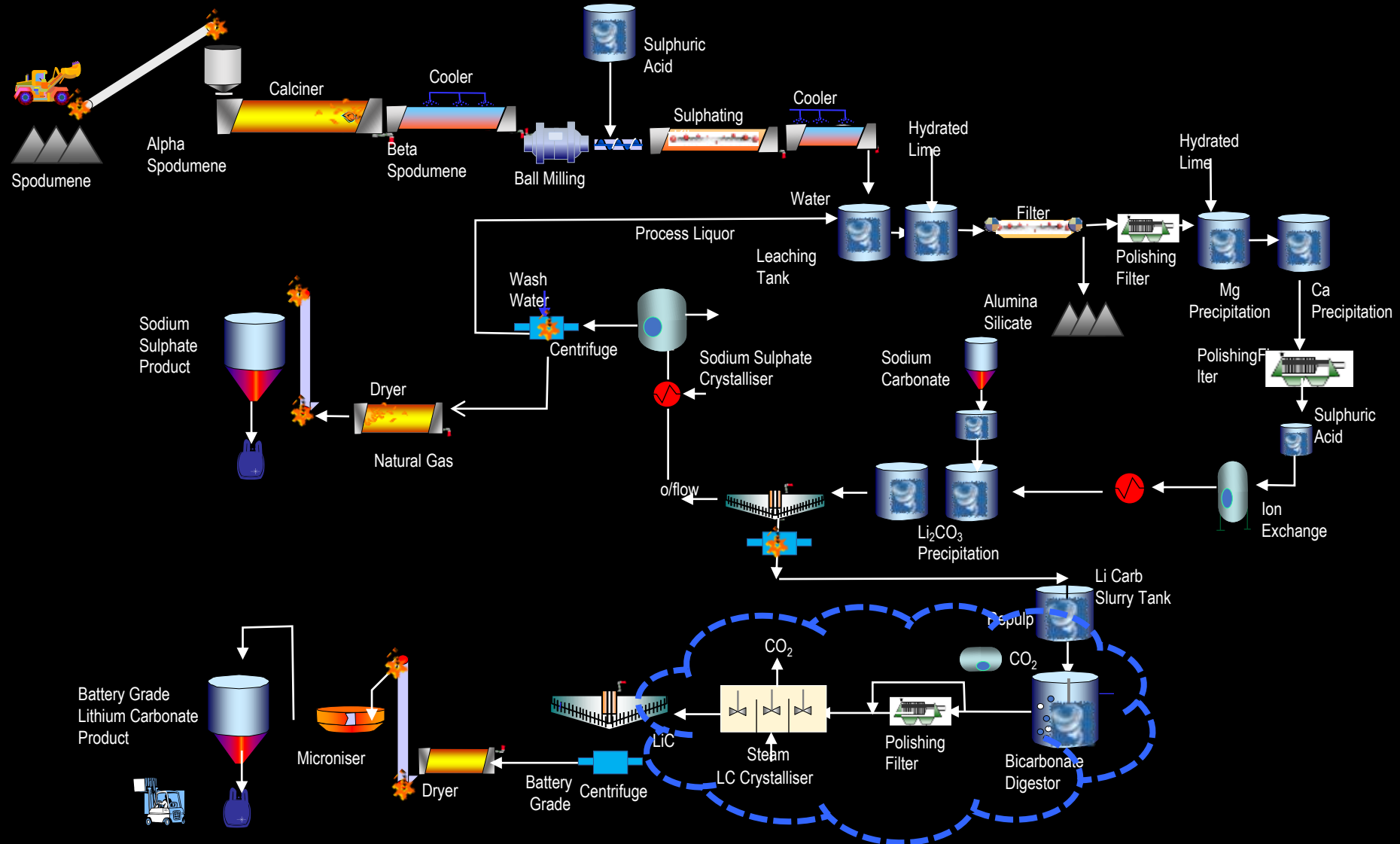
- 16,000 tpa battery grade lithium carbonate plant
- Based on proven Jiangsu design
- Battery grade LC sold to Canada, USA, Europe
- Meets Canadian Government critical minerals strategy
- Provides downstream solution for Canadian Li miners




QLPH Li Refinery Engineering Study

- Canadian Co, Aust based, Canadian Offices
- Built Jiangsu Li Carbonate Plant
- Jiangsu style refinery in Canada – current price
- DFS level of study





An aerial photograph of a lithium refinery site. The site is a rectangular area with a purple roof, labeled 'BRANDCOUR LITHIUM REFINERY'. It is surrounded by green fields and a forested area. A railway line runs horizontally across the upper part of the image, and a highway runs diagonally from the bottom left towards the center. To the right, a body of water contains port facilities. Labels with blue arrows point to the railway, the refinery, the highway, and the port facilities. The text 'GOOD LOCATION' and 'CLOSE TO INFRASTRUCTURE' is overlaid in the bottom left corner.

RAILWAY

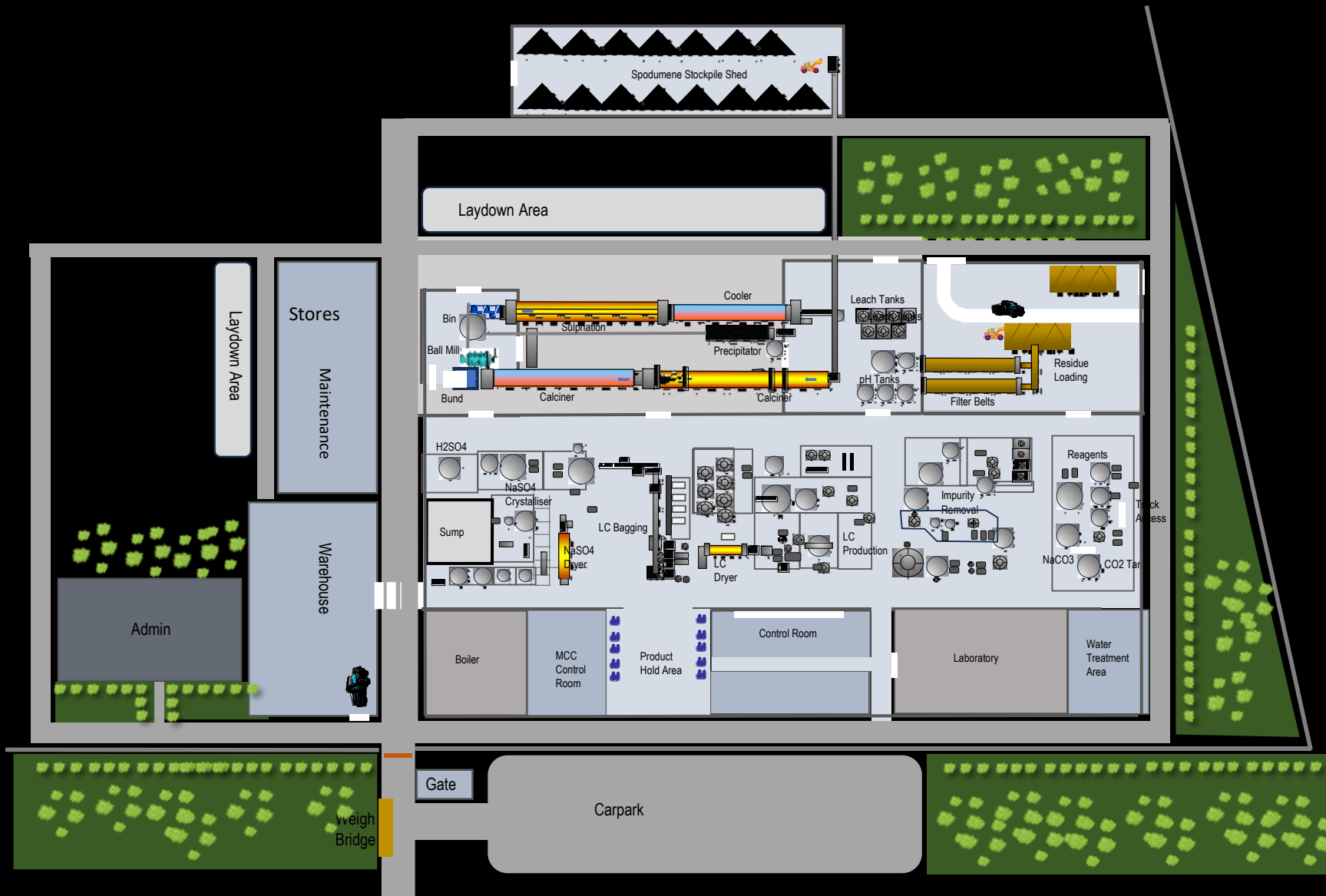
BRANDCOUR
LITHIUM
REFINERY

PORT FACILITIES

HIGHWAY

**GOOD
LOCATION**

CLOSE TO
INFRASTRUCTURE



Site Allows for 3 Trains – 48,000 tpa

Train 3

Train 2

Train 1



Why Li Carbonate not Li Hydroxide?

- Proven track record in Li Carbonate
- Li Carbonate feed for LFP lithium batteries
- LFP battery demand growth due to safety and costs
- LFP 67% of China EV installations in 2023
- LFP forecast 87% of ESS market by 2033
- Some Li Chinese producers starting to switch to Carbonate





Lithium Carbonate Refinery Test Program Underway

- Metallurgical testing - International sources of spodumene
- Lithium Refinery to have robust capability
- Shipment to Becancour – while Canadian Li industry develops
- First program achieves 99.7% LiCO_3 above the battery grade spec of 99.5% LiCO_3

Lithium Dream Team

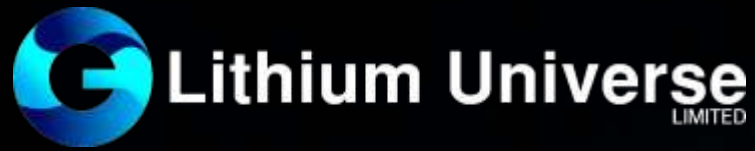
Proven Lithium Track Record

Proven Technology

Derisking the Lithium Conversion Gap

Quebec Lithium Processing Hub

Vertically integrated mine to battery grade lithium strategy



FORWARD-LOOKING STATEMENTS

The Company wishes to remind investors that the presence of pegmatite does not necessarily equate to spodumene mineralization. Also that the presence of pegmatite and spodumene mineralization on nearby tenements does not necessarily equate to the occurrence on Lithium Universe Limited's tenements. This announcement contains forward-looking statements which are identified by words such as 'anticipates', 'forecasts', 'may', 'will', 'could', 'believes', 'estimates', 'targets', 'expects', 'plan' or 'intends' and other similar words that involve risks and uncertainties. Indications of, and guidelines or outlook on, future earnings, distributions or financial position or performance and targets, estimates and assumptions in respect of production, prices, operating costs, results, capital expenditures, reserves and resources are also forward looking statements. These statements are based on an assessment of present economic and operating conditions, and on a number of assumptions and estimates regarding future events and actions that, while considered reasonable as at the date of this announcement and are expected to take place, are inherently subject to significant technical, business, economic, competitive, political and social uncertainties and contingencies. Such forward-looking statements are not guarantees of future performance and involve known and unknown risks, uncertainties, assumptions and other important factors, many of which are beyond the control of our Company, the Directors and management. We cannot and do not give any assurance that the results, performance or achievements expressed or implied by the forward-looking statements contained in this announcement will actually occur and readers are cautioned not to place undue reliance on these forward-looking statements. These forward looking statements are subject to various risk factors that could cause actual events or results to differ materially from the events or results estimated, expressed or anticipated in these statements.

IMPORTANT NOTICE & DISCLAIMER

The purpose of this presentation is to provide background information to assist readers in obtaining a general understanding of Lithium Universe Limited (LU7 or the Company) and its objectives. Readers should make their own independent assessment of the information and take their own independent professional advice in relation to the information and any proposed action to be taken in on the basis of the information. To the maximum extent permitted by law, LU7 and its professional advisors and their related bodies corporate, affiliates and each of their respective directors, officers, partners, employees, advisers and agents and any other person involved in the preparation of this presentation disclaim all liability and responsibility (including without limitation any liability arising from fault or negligence) for any direct or indirect loss or damage which may arise or be suffered through use of or reliance on anything contained in, or omitted from, this presentation. Neither LU7 nor its advisors have any responsibility or obligation to inform the reader of any matter arising or coming to their notice after the date of this presentation, which may affect any matter referred to in the presentation. The distribution of this Presentation (including an electronic copy) outside Australia may be restricted by law. If you come into possession of this Presentation, you should observe such restrictions and seek your own advice on such restrictions. Any non-compliance with these restrictions may contravene applicable securities.

NOT AN OFFER

This presentation is not and should not be considered as an offer or invitation to apply for or purchase securities of the Company or as a recommendation or inducement to make an offer or invitation in respect of the Company's securities. This presentation is not a disclosure document under Australian law or under any other law. It does not purport to contain all the information any reader or prospective investor may require to make an investment decision and it does not contain all of the information required by Australian law or any other law to be disclosed in a prospectus. In particular, this presentation does not constitute an offer to sell, or the solicitation of an offer to buy, any securities in the United States. This Presentation may not be distributed or released in the United States.

Securities in the Company have not been, nor will be, registered under the U.S. Securities Act of 1933, or the securities laws of any state or other jurisdiction in the United States. Accordingly, the securities in the Company may not be offered or sold, directly or indirectly to, persons in the United States or persons who are acting for the account or benefit of a person in the United States unless they have been registered under the U.S. Securities Act or in a transaction exempt from, or not subject to, the registration requirements of the U.S. Securities Act and any other applicable U.S. laws.

NOT INVESTMENT ADVICE

The presentation is not investment or financial product advice (nor tax, accounting or legal advice) and is not intended to be used for the basis of making an investment decision.

NO LIABILITY

No representation or warranty, express or implied, is given as to the fairness, accuracy, completeness, reliability or adequacy of statements, estimates, opinions or other information, or the reasonableness of any assumption or statement in this presentation (any of which may change without notice), or the likelihood of achievement or reasonableness of forecasts or prospective statements in this presentation. Forecasts and prospective statements are by their nature subject to significant uncertainties and contingencies. Forecasts and prospective statements in this presentation are based on current expectations about future events and are subject to risks, uncertainties and assumptions that could cause actual results to differ materially from the expectations described.

This presentation has been approved for release by the Chairman of Lithium Universe Limited.