

## 19 May 2016 - High Grade Gold at Edna Beryl West

*5m at 27g/t gold incl. 2m at 51g/t gold  
13m at 8.7g/t gold incl. 7m at 15g/t gold*

## 5 July 2016 - ..... High Grade Gold at Edna Beryl West

*13.2g/t gold incl. 3m at 15.7g/t gold  
3m at 11.2g/t gold  
9m at 5.33m g/t gold incl. 3m at 10.4g/t gold*

## 2 August 2016....Further High Grade “Bonanza” Gold at Edna Beryl West

*5m at 35.6g/t gold from 120m  
2m at 30.1g/t gold from 128m  
3m at 36.6g/t gold from 227m*

## 31 October 2016...Bonanza and visible gold at Tennant Creek

*8m at 157g/t gold, 34.5g/t silver, 0.5% copper*

## 23 June 2017...Production commences at the Edna Beryl Gold Mine

**Precious Metals Investment Symposium**

**Rob Bills, Managing Director & CEO**

# Important Notice and Disclaimer

This presentation has been prepared by Emmerson Resources Limited ACN 117 086 745 (ASX: **ERM**) (the “**Company**”) and is being provided to a limited number of investors for the sole purpose of providing preliminary background information to enable recipients to review the business activities of the Company. It is not intended as an offer, invitation, solicitation or recommendation with respect to the purchase or sale of any securities.

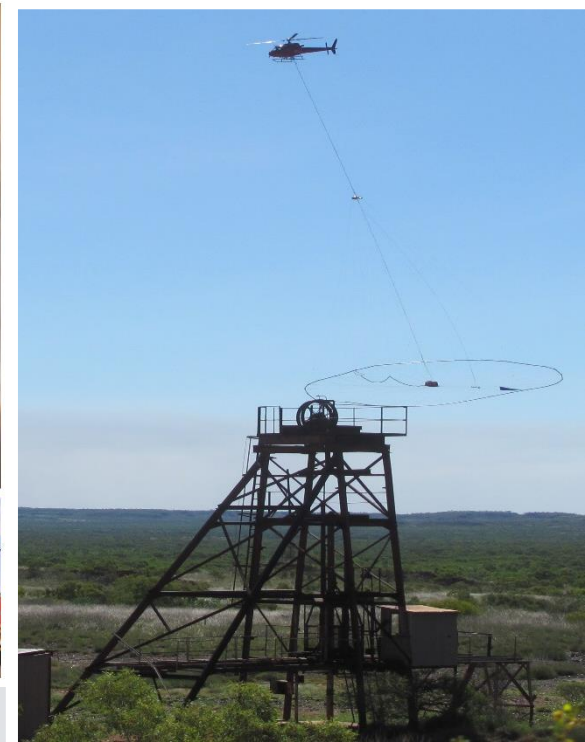
This presentation should not be relied upon as a representation of any matter that a potential investor should consider in evaluating the Company. The Company, nor any of its directors, agents, officers, employees or affiliates does not make any representation or warranty, express or implied, as to or endorsement of, the accuracy or completeness of any information, statements, representations or forecasts contained in this presentation, and they do not accept any liability for any statement made in, or omitted from, this presentation.

Prospective investors should make their own independent evaluation of an investment in the Company.

Nothing in this presentation should be construed as a financial product advice, whether personal or general, for the purposes of Section 766B of the Corporations Act. This presentation consists purely of factual information and does not involve or imply a recommendation or a statement of opinion in respect of whether to buy, sell or hold a financial product. The Company has not considered any of your objectives, financial situation or needs.

This presentation and contents has been made available in confidence and may not be reproduced or disclosed to third parties or made public in any way without the express written permission of the Company.





**Emmerson Resources – application of new technology  
discovers a new generation of gold and copper deposits ....  
First gold mine under construction....  
[www.emmersonresources.com.au](http://www.emmersonresources.com.au)**

# Board of Directors



**Mr. Andrew McIlwain B.Eng (Mining)**  
**Non-Executive Chairman**

Mining Engineer with more than 25 years experience in operational, senior management and executive roles (MIM, WMC, UML & others).



**Mr. Robert Bills B.Sc, M.Sc**  
**Managing Director and Chief Executive Officer**

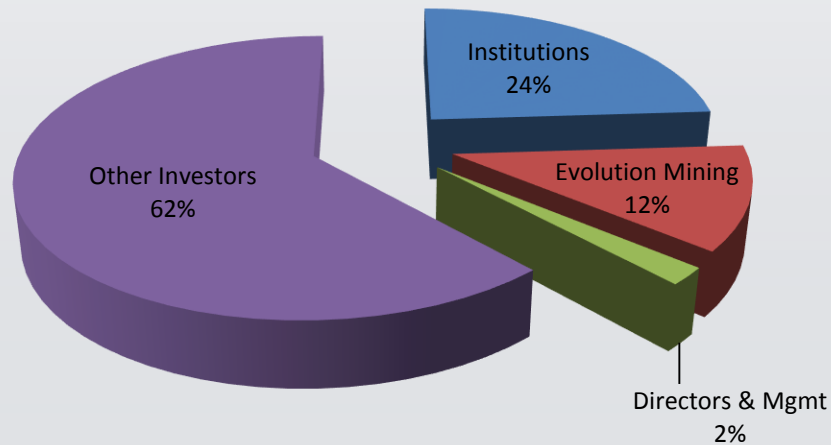
Geologist with over 25 years experience in exploration and mining with WMC and BHP. Joined Emmerson in late 2007 as the Managing Director and CEO.



**Dr. Allan Trench B.Sc (Hons), Ph.D, M.Sc, MBA**  
**Non-Executive Director**

Geologist/geophysicist with extensive experience in strategy, project development and operations within the natural resource sector.

# Recent Successful Capital Raising



ASX code	ERM
Shares on issue	402,030,203
Options (Exercise price \$0.0485)	5,500,000
Options (Exercise price \$0.135)	19,800,000
Market capitalisation (at \$0.087/share)	\$35.0 million
Cash (23/10/17)	\$5.4 million
Enterprise value	\$29.6 million

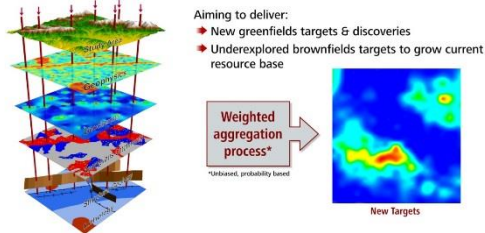




# Integrated 3 fold strategy - to deliver short and longer term value

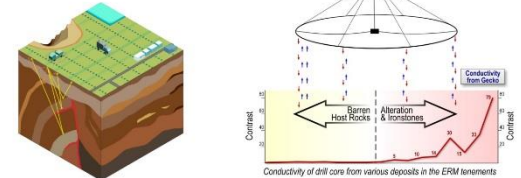
Precise Prediction and Detection = increasing probability of Discovery!

Precise Prediction and Detection

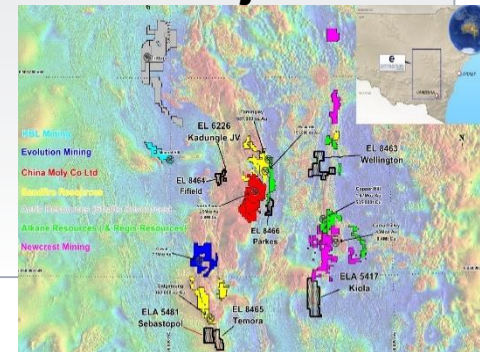


Advanced Detection Technology

- Multiple (applicable) detection technologies increase the probability of discovery
- Emmerson have pioneered the first use of high powered, airborne electrical geophysics in Tennant Creek (and discovered the Goanna Mineralisation)
- Emmerson and JV Partner, Evolution Mining have pioneered seismic geophysics in Tennant Creek (has highlighted the Edna Beryl mineralisation)



- **Application of new technology/ideas to make new discoveries in Tennant Creek** (Goanna copper-gold, Mauretania gold, Edna Beryl gold)
- **Small Mines – monetise existing resources and provide opportunities for “near mine” discoveries** (*Edna Beryl under development and will be one of Australia’s highest grade gold mines plus pipeline of others*)
- **Leverage new technology/ideas outside of the Tennant Creek Project**  
*Five new gold-copper projects in New South Wales*

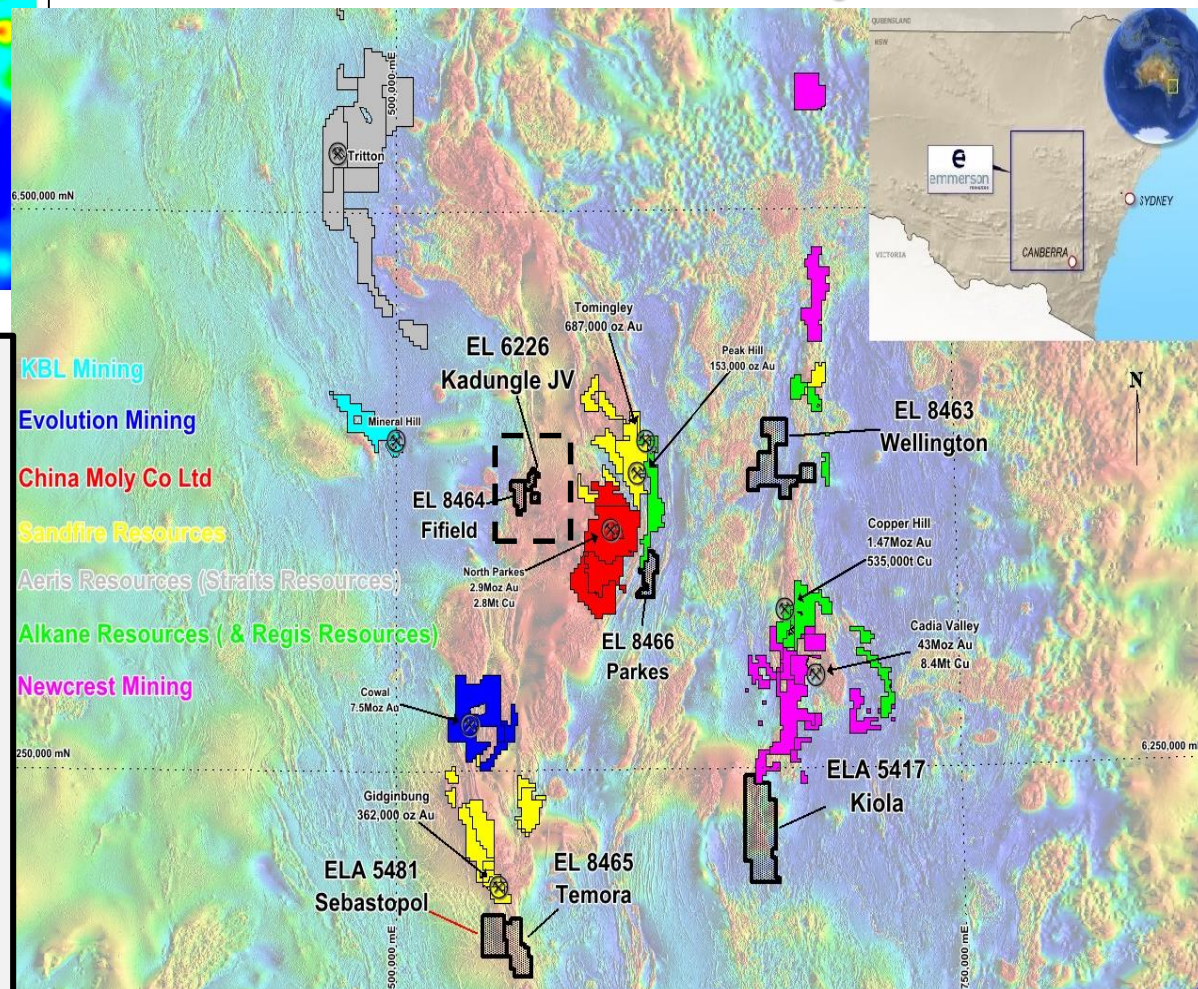




## Kaiser Prospect★

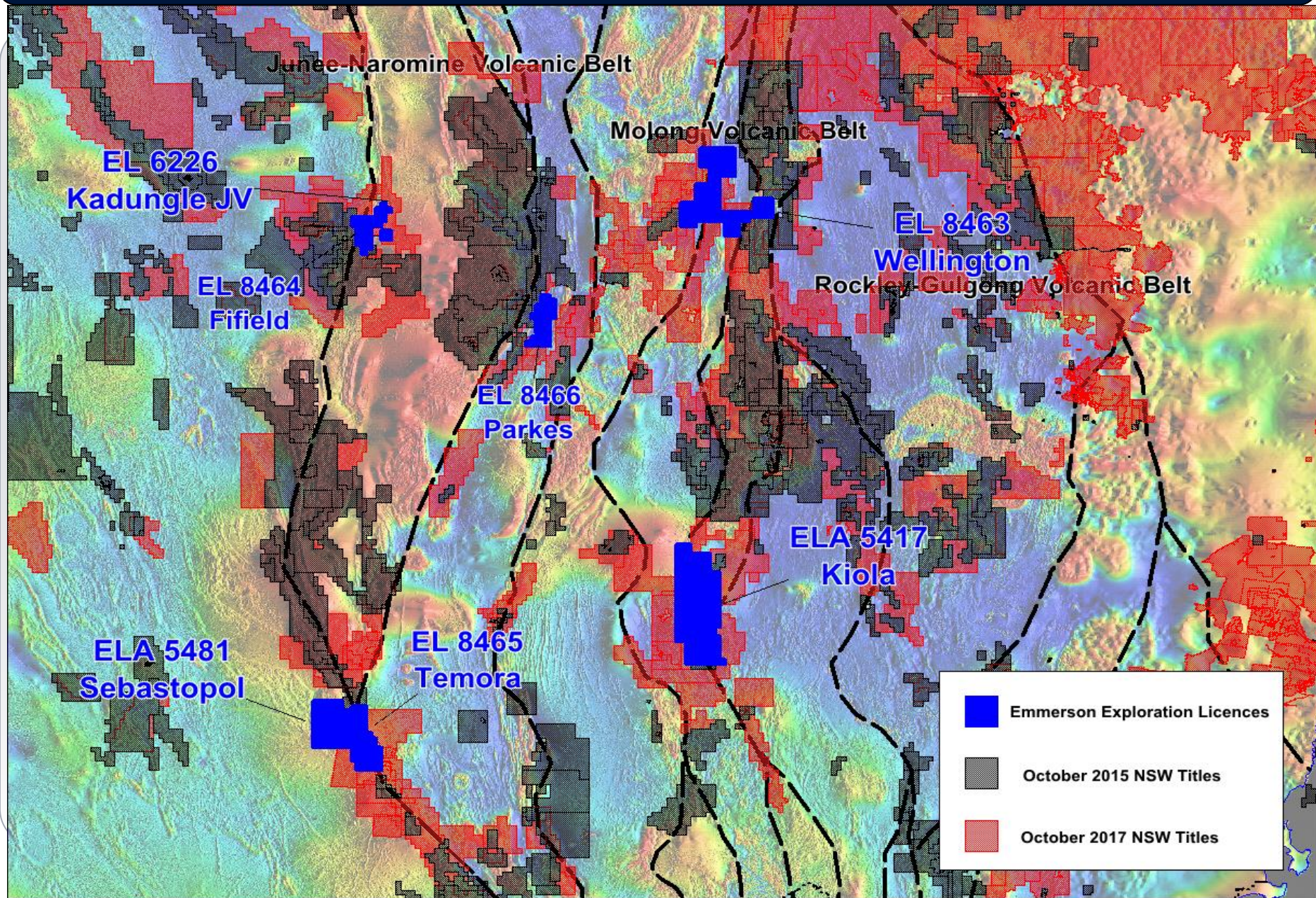


- ## New South Wales Projects



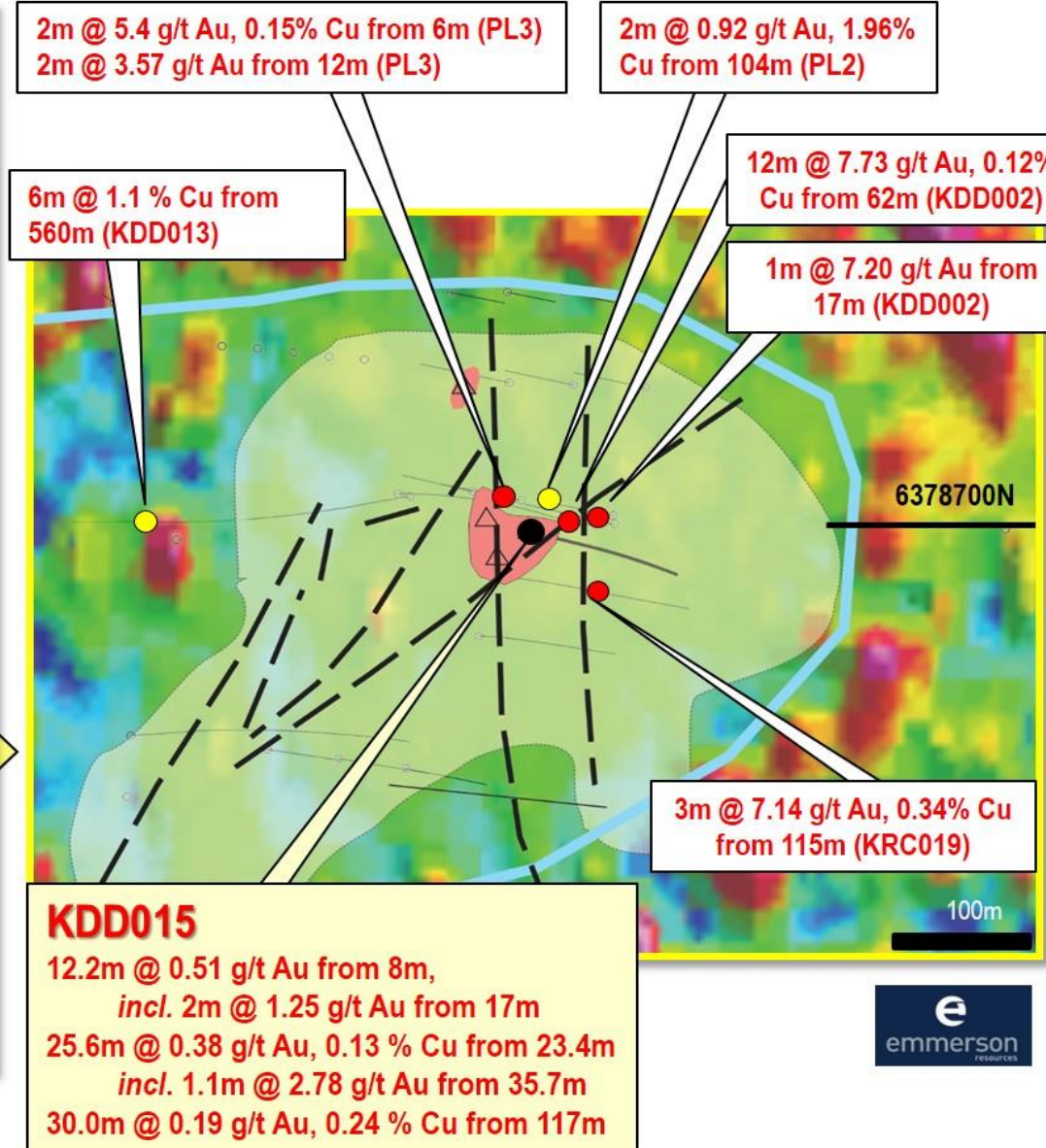
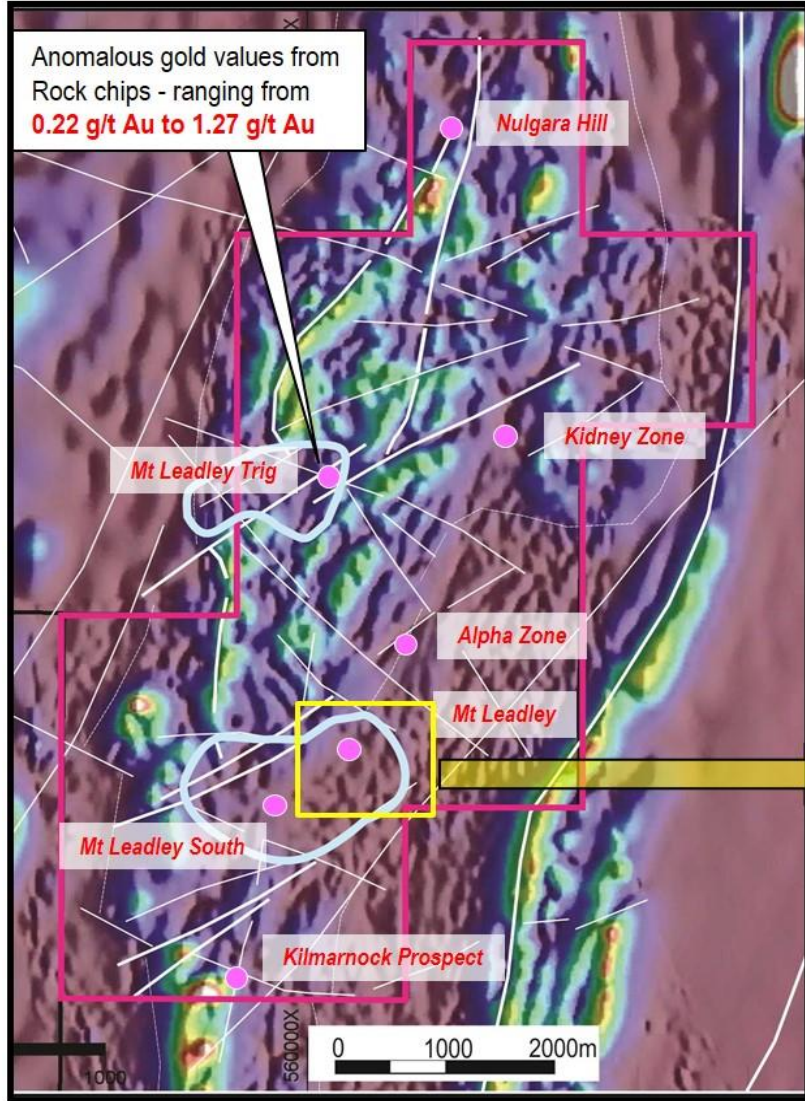


# ERM NSW Tenements — large holding in prospective belts



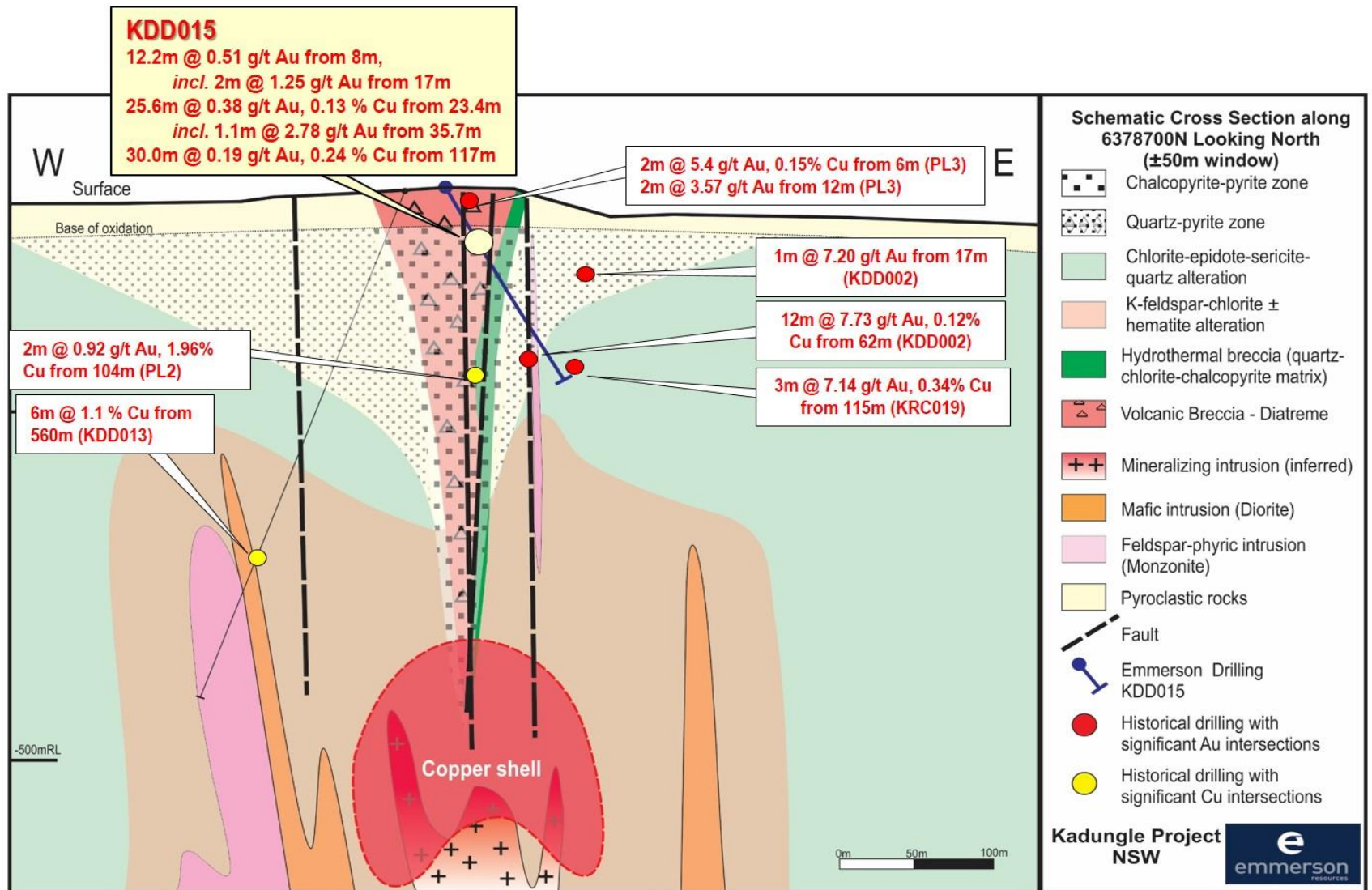


# Kadungle – shallow epithermal gold and deeper porphyry copper-gold





# Kadungle — shallow epithermal gold, deeper porphyry copper-gold





# Mount Leadley IP Geophysical Anomalies

Interpreted demag zone interp SGC

KDD015

Diatreme

Shallow Chargeability anomalies  
(~0 – 250m below surface)

Deep Chargeability anomalies  
(~ 500m – 700m below surface)

Mount Leadley North

Mount Leadley South

IP L11600E

IP L11200E

IP L11000E

IP L10800E

IP L10400E

IP L10000E

Andesitic\_FeldsPo

Breccia pipe

Hydrothermal breccia

Lithic Tuff

Tuffaceous SL

Crystal Tuff

Flow banded Rhyolite

Agglomerate



Ground Mag





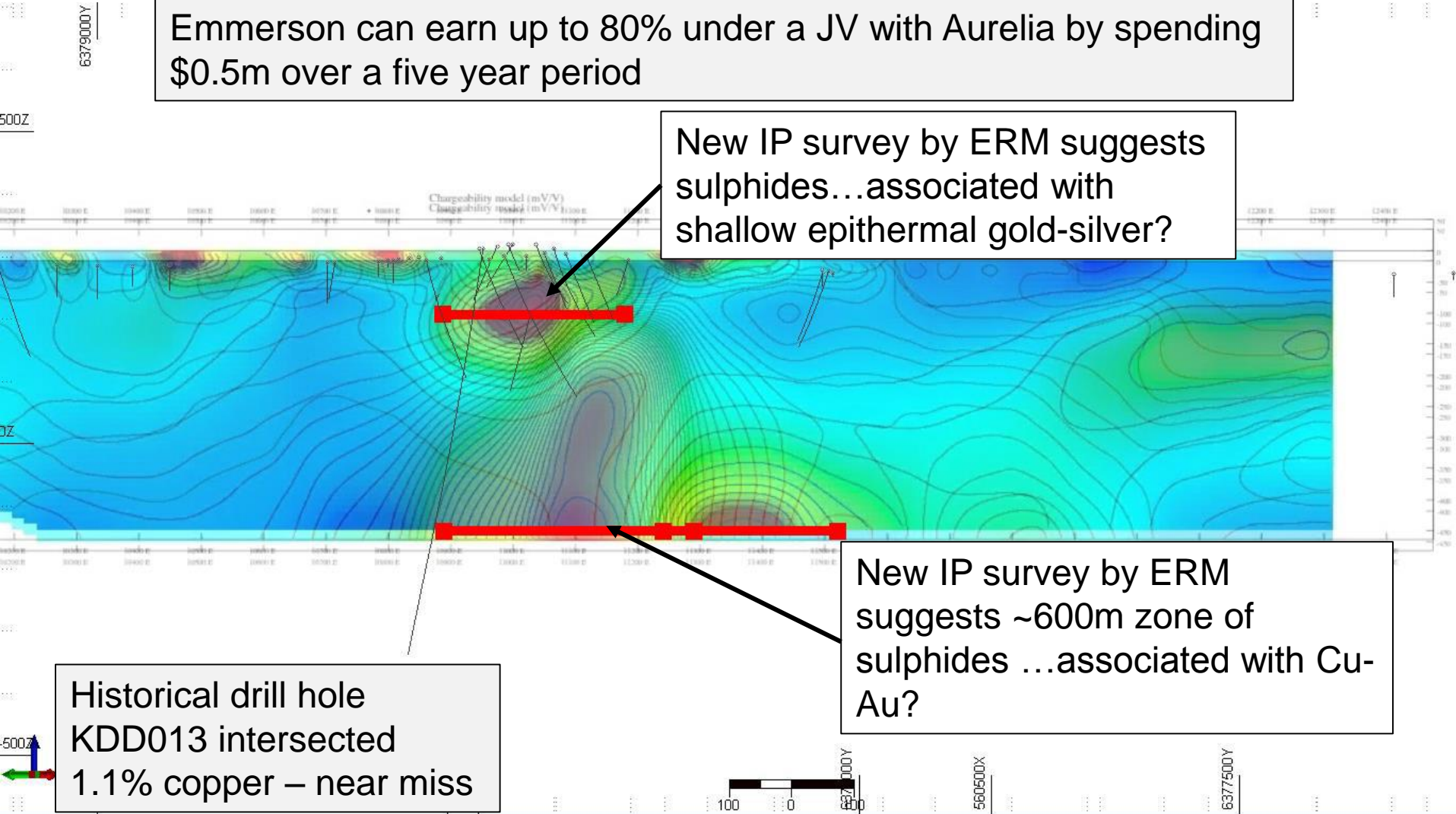
# Subject of systematic exploration – Drill hole KDD013 near miss!!

Emmerson can earn up to 80% under a JV with Aurelia by spending \$0.5m over a five year period

New IP survey by ERM suggests sulphides...associated with shallow epithermal gold-silver?

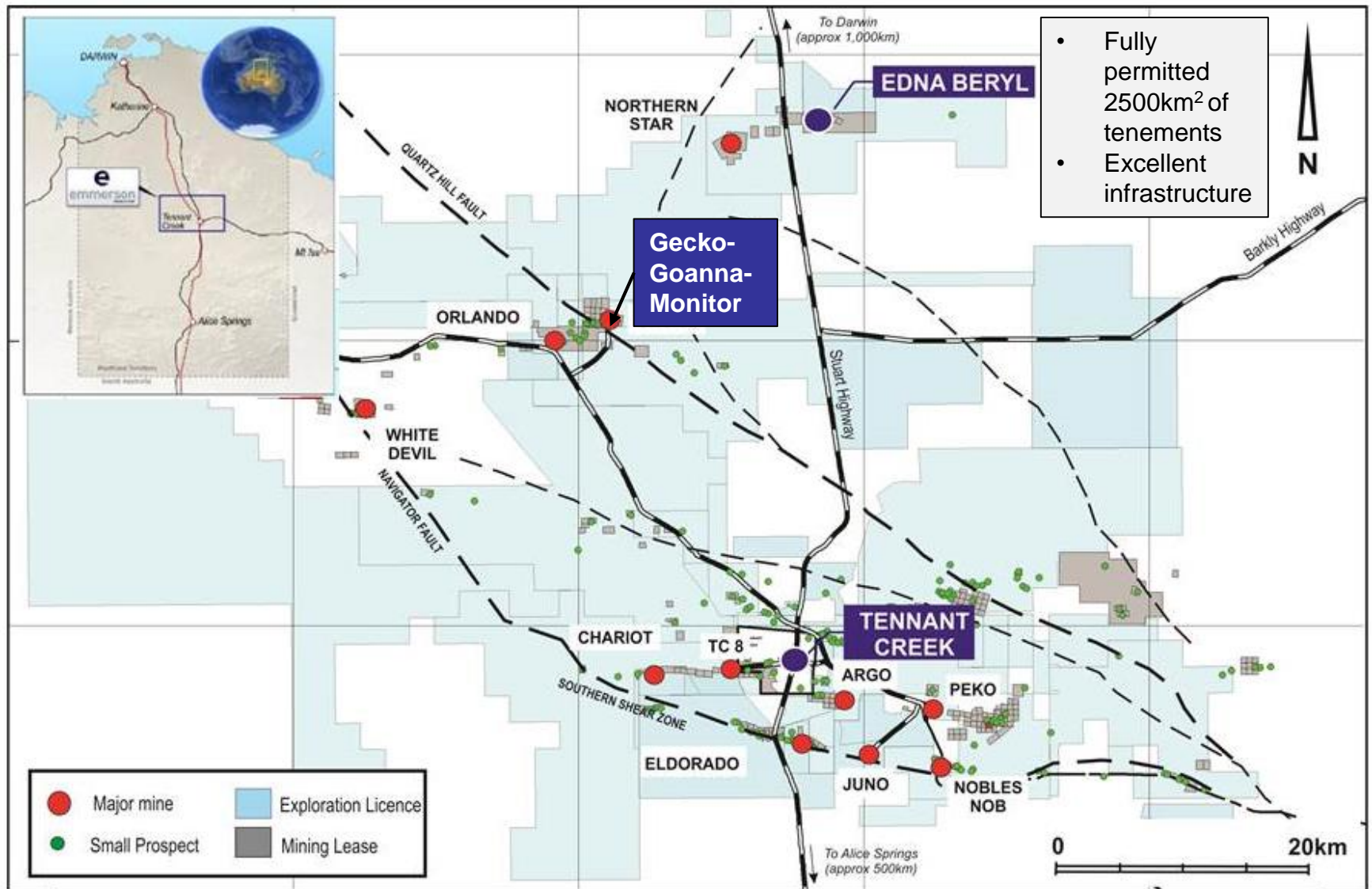
New IP survey by ERM suggests ~600m zone of sulphides ...associated with Cu-Au?

Historical drill hole KDD013 intersected 1.1% copper – near miss





# Location of Tennant Creek – NT Aust.



# Evolution Mining a great partner in one of Australia's highest grade gold and copper provinces

**\$15m earn-in by Evolution at Tennant Creek now extended to December 2017**

HOA 12 June 2014  
Exploration commences

JV agreement  
20/12/2014

**December 2017  
\$15M for 65% JV  
interest**

December 2019  
\$25M for 75% JV  
interest

FY 14	FY15	FY16	Jul-16 to Dec-17	Jan-18 to Dec-19
\$0.3M	\$4.7M	\$4.4M	\$5.6M	\$10M

LTD to July 17 \$13.5M

Eldorado-Chariot  
(resource  
extensions)

Mauretania  
Discovery

**Edna Beryl gold  
Discovery**

Ironstone fertility Indicator  
Seismic, EM, Gravity &  
Magnetic surveys

**Goanna Copper  
Discovery**

## **Value Proposition**

New generation of high grade  
gold and copper deposits in  
Tennant Creek. Modest  
Income stream from small  
mines initiative

JV also included ~\$2m EVN shares + placement in ERM of  
~13%



WEST

Edna Beryl West

Edna Beryl North

Edna Beryl Mine (East)  
(Under Construction)

EAST

Long Section along  
079° Azim Looking NNW

- Ironstone 1  
Edna Beryl Main
- Ironstone 2  
Edna Beryl South
- Ironstone 3  
Edna Beryl North
- Ironstone 4  
Edna Beryl Far North

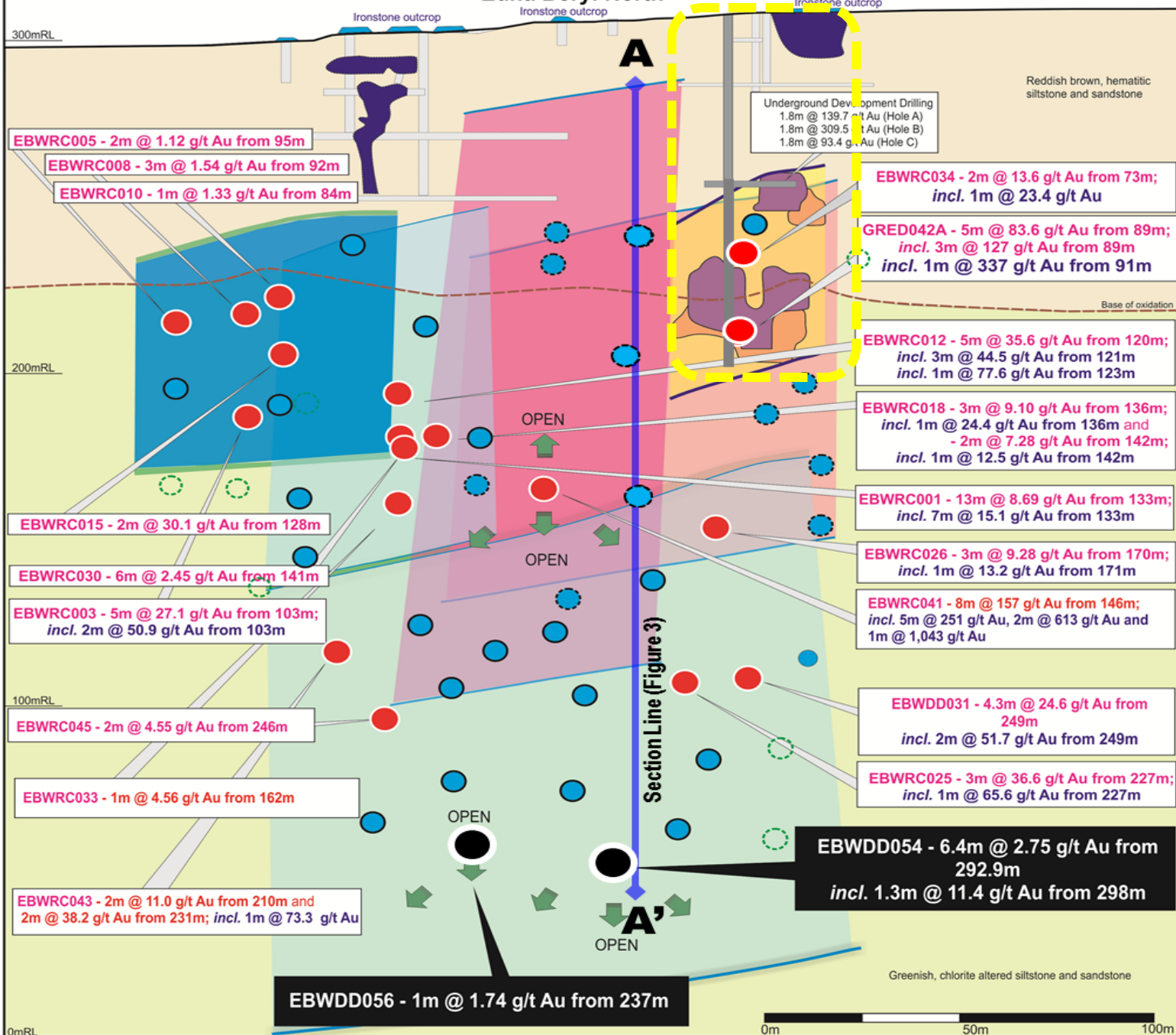
Tribute  
Agreement Area

**GOLD  
INTERSECTIONS**  
ASX Announcement

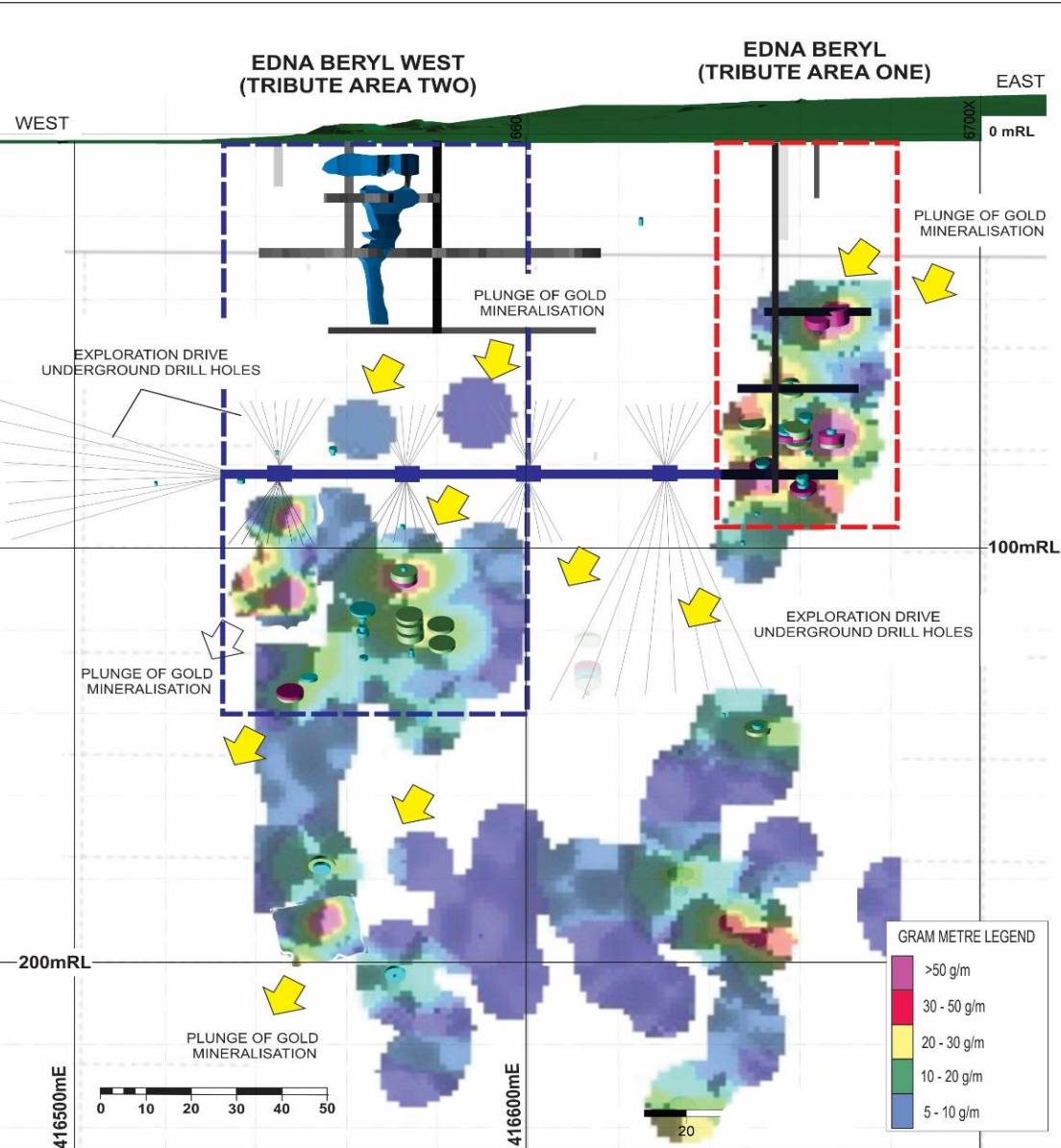
- Emmerson Drilling  
with Au intersections
- ERM Drilling  
Ironstone intersections
- ERM Drilling  
No significant Au  
intersections
- Results not returned  
from Laboratory

Edna Beryl Mine

- Stope/Open cut
- Defined Gold Ore
- Underground  
Drilling Required



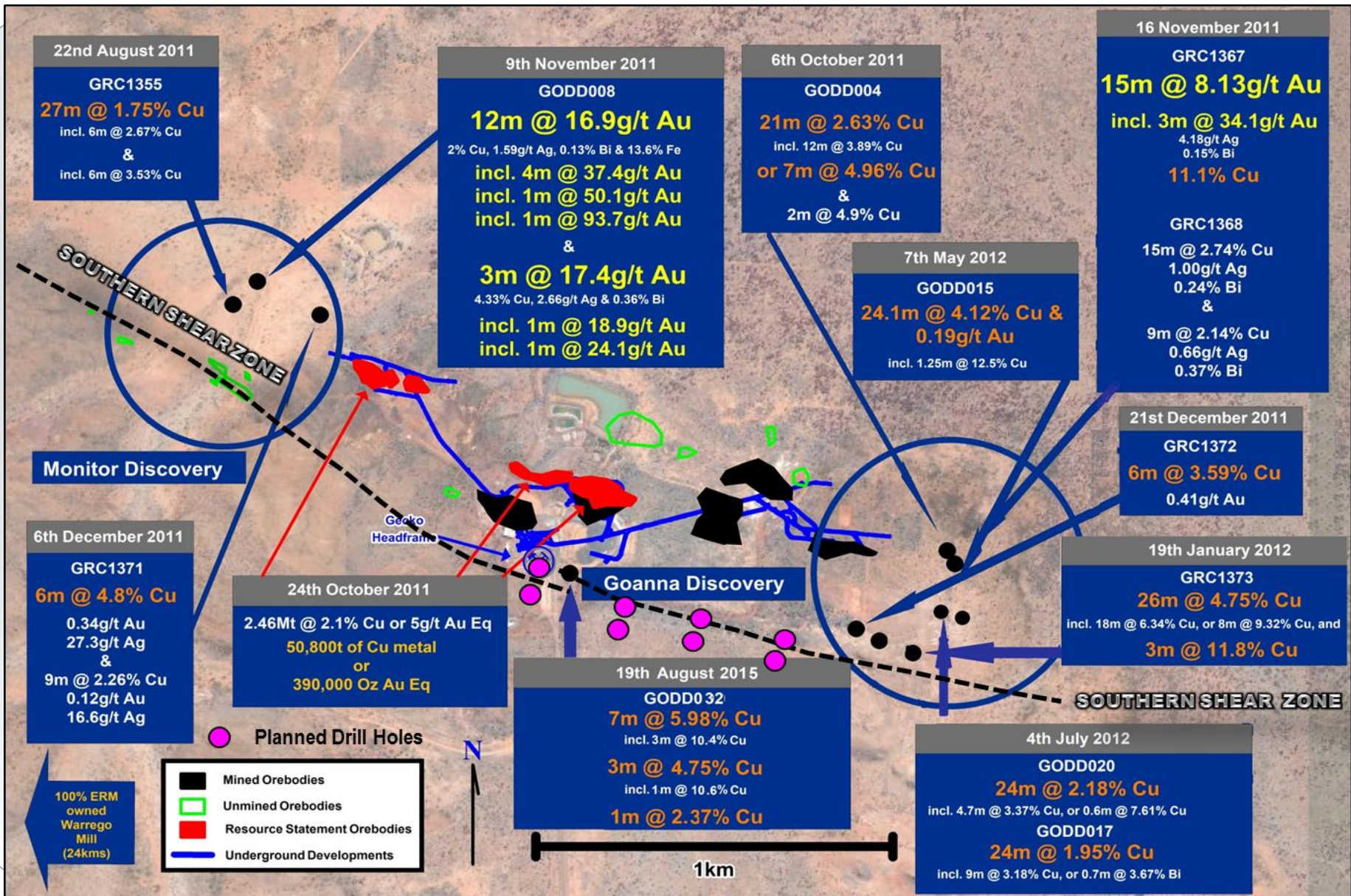
# Edna Beryl – proposed exploration drive



- Edna Beryl – currently mined under a tribute agreement
- Mitigates risk to ERM
- De-risks exploration/mining
- Terms: first 5000ozs = 12%  
 5,000 - 20000 = 17%  
 20,000 – 50,000 = 23%  
 >50,000 = 30%



# Gecko-Goanna-Monitor: Next drill Program funded by Evolution



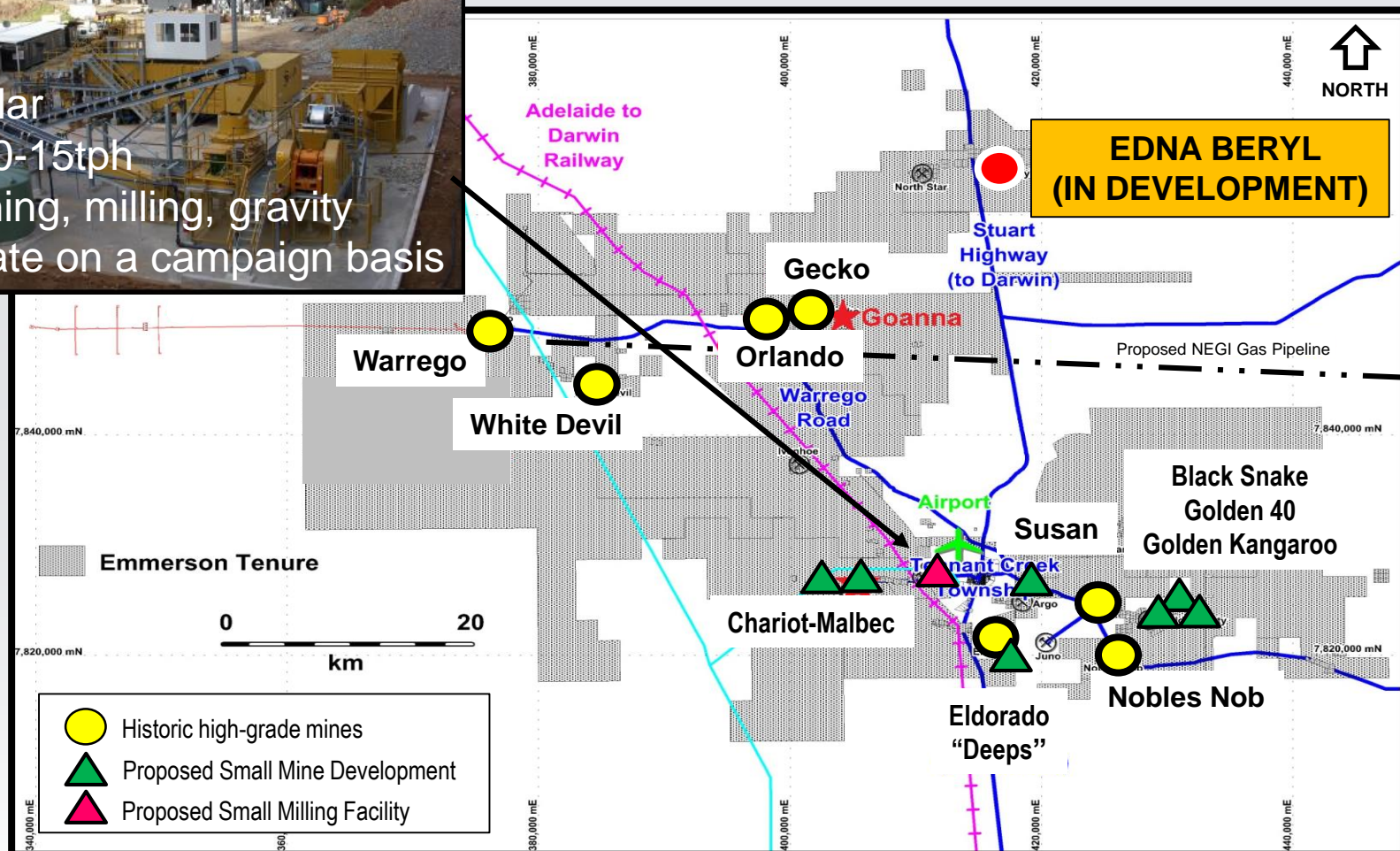


# Strategy 2 - Small Mines

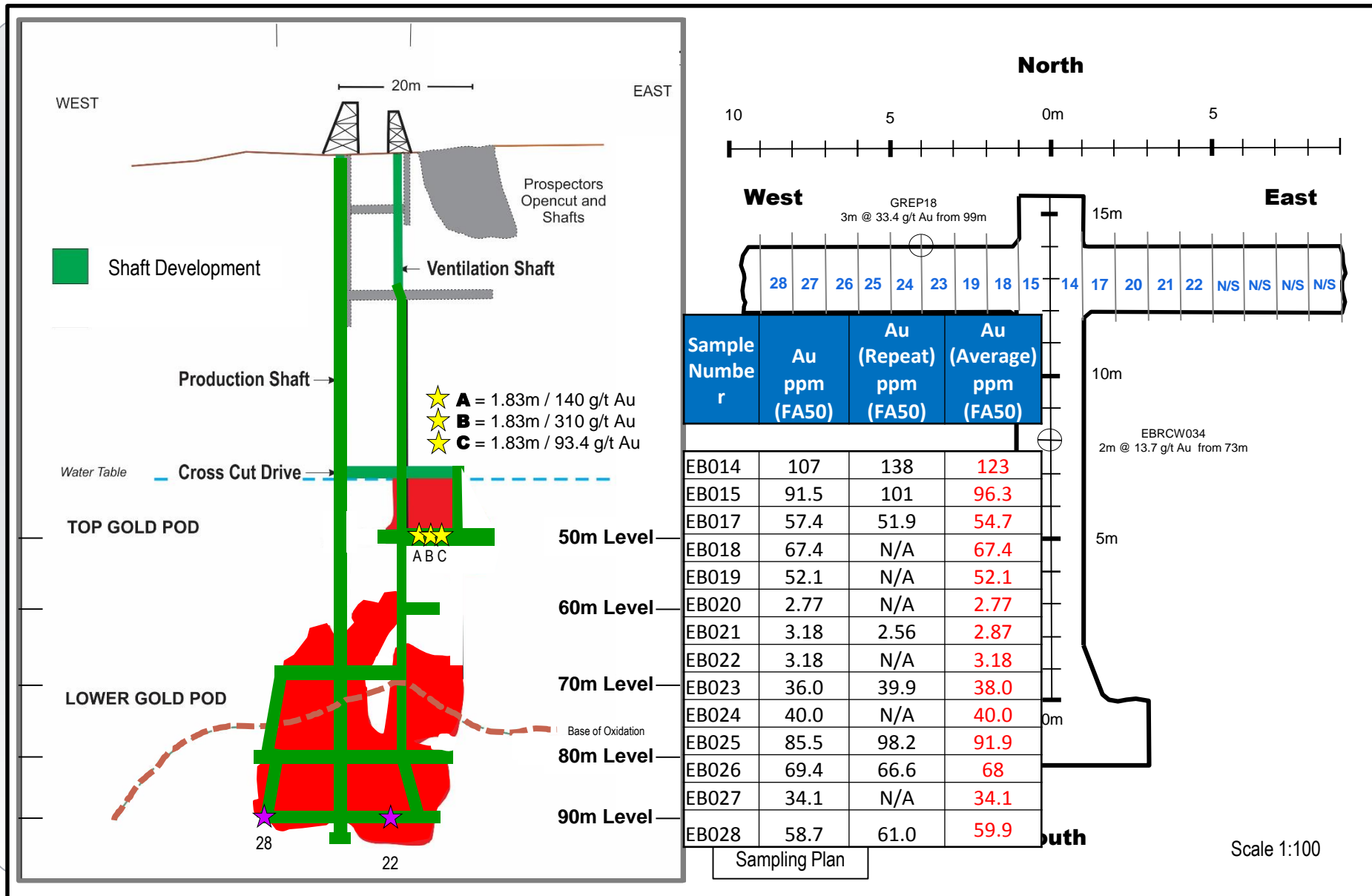
Risk free cash via Tribute Agreement from high grade resources

Proposed Central Mill

- Modular
- Toll 10-15tph
- Crushing, milling, gravity
- Operate on a campaign basis



# Edna Beryl – mine plan and recent underground assay results





# Assay Results from bulk sampling of the Edna Beryl Development Ores

## Attest to the ultra high grades



# Emmerson – a unique gold and copper explorer

- Kadungle project (NSW) – new IP indicates great potential for shallow gold and deeper copper-gold (*2,500m of drilling about to commence*)
- Other NSW projects undergoing systematic exploration
- Tennant Creek Exploration fully funded by Evolution Mining
- First small, ultra high grade gold mine under construction (Edna Beryl)
- Other small mines undergoing permitting and planning
- Next drill program at Tennant Creek (NT) of ~2,500m at the recently discovered Gecko-Goanna copper-gold project about to commence
- ERM remains well funded ~\$5.4m in cash plus potential for risk free cash from small mines
- Successful capital raising at a premium of ~\$2m provides funds to fast track NSW projects



# Competent Person Statement

The information in this report relating to Exploration Results is based on information compiled by Mr Steve Russell, who is a Member of the Australian Institute of Geoscientists and has sufficient exploration experience which is relevant to the style of mineralisation under consideration to qualify as a Competent Person as defined in the 2004 Edition of the 'Australasian Code for Reporting of Exploration Results, Mineral Resources and Ore Reserves'. Mr Russell is a full time employee of Emmerson Resources Ltd. Mr Russell consents to the inclusion in the report of the matters based on his information in the form and context in which it appears.

The information in this report which relates to Mineral Resources is based upon information compiled by Mr Ian Glacken, who is a Fellow of the Australasian Institute of Mining and Metallurgy. Ian Glacken is an employee of Optiro Pty Ltd and has sufficient experience which is relevant to the style of mineralisation and type of deposit under consideration and to the activity which he is undertaking to qualify as a Competent Person as defined in the 2004 edition of the Australasian Code for Reporting of Exploration Results, Mineral Resources and Ore Reserves. Ian Glacken consents to the inclusion in the report of a summary based upon his information in the form and context in which it appears.

Gecko, Goanna & Orlando Mineral Resource: see details in ASX announcement "New High Grade Drill Results & Upgrade to Resource Inventory" released on 18 October 2013.

Chariot Mineral Resource: see details in ASX announcement "High Grade Chariot Gold Resource" released on 28 November 2013.

The information was first disclosed under the JORC Code 2004. It has not been updated since to comply with the JORC Code 2012 on the basis that the information has not materially changed since it was last reported.

The gold equivalent calculation assumes a gold price of US\$1,363/oz for gold and US\$3.31/lb for copper and makes no allowance for metallurgical recoveries. The totals may not sum exactly due to rounding.

# JORC Resources

Classification	Tonnes	Gold grade (g/t)	Copper grade (%)	Gold equivalent grade (g/t)	Gold ounces	Copper metal (t)	Gold equivalent ounces
<b>Gecko - Anomaly 3, L25 and K44 Lower (reported above a 1% copper cut-off)</b>							
Indicated	1,400,000	-	2.5	4.2	-	35,600	190,000
Inferred	80,000	-	1.6	2.7	-	1,300	10,000
<b>Sub-total Gecko</b>	1,480,000	-	2.5	4.1	-	36,900	200,000
<b>Orlando – (Lenses 2 &amp; 7, below open pit &amp; ‘the gap’ - reported above a 1.0 g/t gold equivalent cut-off)</b>							
Indicated	1,710,000	1.9	1.5	4.4	100,000	25,700	240,000
Inferred	510,000	1.7	1.1	3.6	30,000	5,800	60,000
<b>Sub-total Orlando</b>	2,220,000	1.8	1.4	4.2	130,000	31,500	300,000
<b>Goanna (reported above a 1.0 % Cu cut-off)</b>							
Inferred	2,920,000	0.2	1.8	3.2	15,000	53,700	300,000
<b>Sub-total Goanna</b>	2,920,000	0.2	1.8	3.2	15,000	53,700	300,000
<b>Chariot Potential Open Pit (reported above a 1.0 g/t gold cut-off)</b>							
Indicated	10,000	11.1		11.1	5,000		5,000
Inferred	60,000	19.2		19.2	37,000		37,000
<b>Chariot Potential Underground (reported above a 6.0g/t gold cut-off)</b>							
Indicated	50,000	16.0		16.0	27,000		27,000
Inferred	50,000	18.4		18.4	31,000		31,000
<b>Sub-total Chariot</b>	170,000	17.4		17.4	99,000		99,000
<b>TOTAL</b>	6,790,000	1.1	1.8	3.6	246,000	122,100	900,000

The gold equivalent calculation assumes a gold price of US\$1363/oz for gold and US\$3.31/lb for total copper and makes no allowance for metallurgical recoveries. The totals may not sum exactly due to rounding.