

# A Dominant Position in Australia's Largest Gold Belt

April 2018

ASX: BLK



**BLACKHAM**  
Resources Limited

Matilda M4 Pit

# COMPANY OVERVIEW

- Low risk free milling mine plan targeting 80koz annual production at AISC of A\$1,100-1,200/oz (US\$855-932/oz)
- Gold production in March 2018 quarter of 20,631oz at AISC of A\$1,092/oz (US\$848/oz)
- Well funded to undertake continued exploration, with advanced brownfield opportunities to strengthen and lengthen reserves – focussed on building a “rolling” five year free milling mine plan
- Strong operating cash flows targeting a net cash position by the end of 2018
- Board and management strengthened with experienced gold mining professionals
- Outstanding long-term upside from dominant land position and 6.5Moz (65Mt @ 3.1g/t) resource base

## Directors and Management

Milan Jerkovic	Executive Chairman
Bryan Dixon	Managing Director
Greg Miles	Non-Executive Director
Greg Fitzgerald	Non-Executive Director
Richard Boffey	Chief Operations Officer
Anthony Rechichi	Chief Financial Officer

## Capital Structure

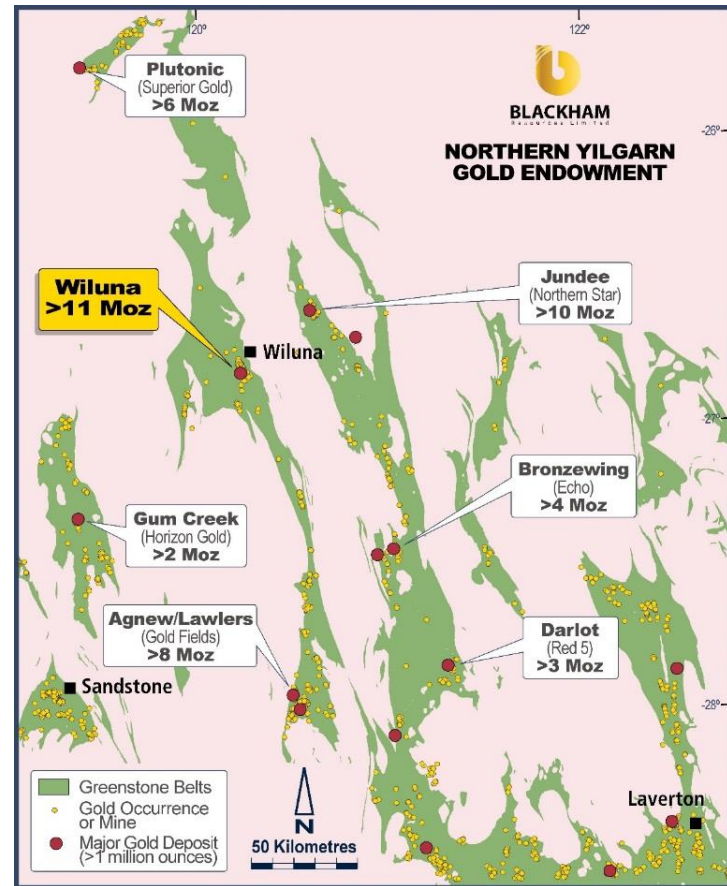
Shares on issue	1,265 million
Share price @ 16 Apr'18	7.8 cents
Market capitalisation	\$99 million
Net debt @ 31 Mar'18)	\$10 million
Enterprise value	\$109 million
Options – quoted (8c, Jan-19)	492 million
Options – unquoted	4.2 million

Quoted options have an exercise price of 8 cents and expire in January 2019  
Unquoted options have various exercise prices above 30 cents and expire at various dates in February 2019 and beyond

# WILUNA GOLDFIELD – A PREMIER EXPLORATION ASSET

- +1,100km<sup>2</sup> of tenure & 55km of strike along Australia's largest gold belt
- Regional endowment > 40Moz
- Resource **65Mt @ 3.1 g/t for 6.5Moz Au** <sup>(1)</sup>
- Blackham has consolidated the Wiluna goldfield with all deposits < 20km from the plant
- 4 separate large gold systems, providing good mix of base load open pit & high grade underground ore sources
- Multiple drill ready targets
- Matilda-Wiluna Operation has an 11Moz endowment
  - >4.4Moz of past production
  - Avg. of 101kozpa over last 27 years of operations

1) Refer to ASX release dated 12 October 2017



**1.**

**Strong  
Operational  
Cashflows**

**2.**

**Targeting a  
Rolling 5-year  
Free-Milling  
Mine Plan**

**3.**

**Outstanding  
Growth  
Opportunities**

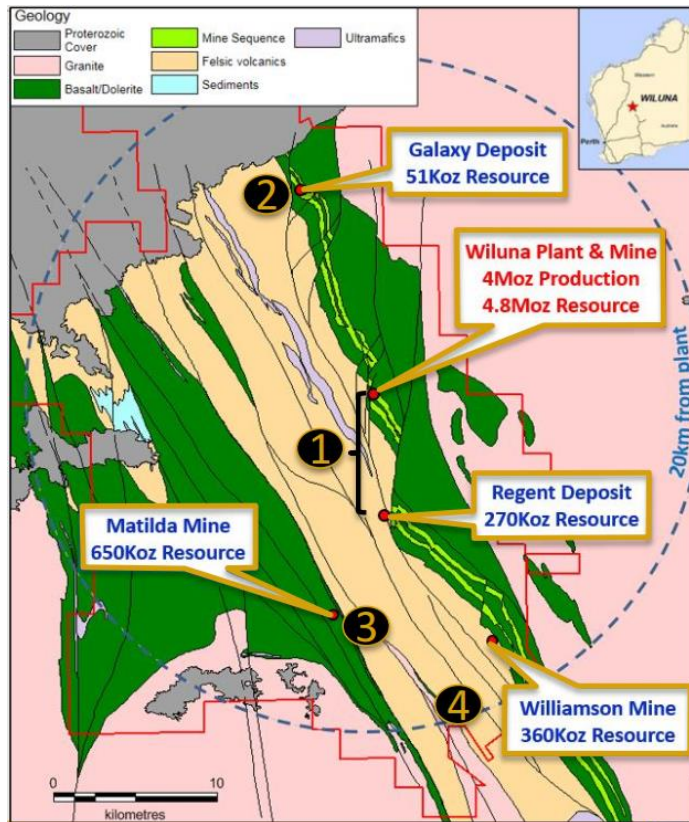
# OPERATIONS GENERATING STRONG CASH FLOWS



- 20.6koz production in March 2018 quarter, demonstrating strong project economics:
  - low strip ratios (2.5:1)
  - low AISC (A\$1,092/oz)
  - processing rate of 1.94mtpa at 89% recovery
  - high grade stockpiles increased to 162koz @ 1.7g/t ~ 1 months mill feed
- Targeting steady annual production of 80koz



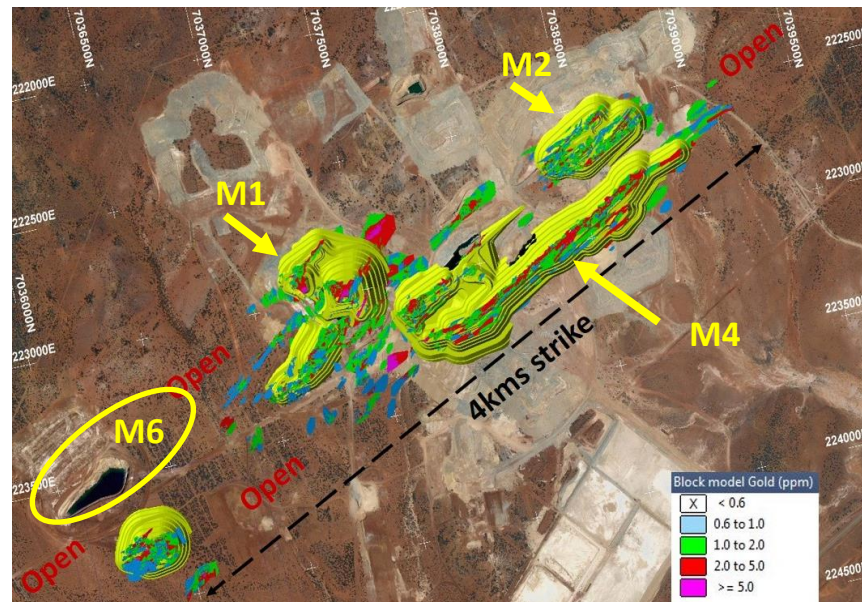
# FOUR LARGE SCALE GOLD SYSTEMS



- Four large scale gold systems, capable of sustaining a sizeable long life operation
- Free milling resources of 22.8Mt @ 1.76g/t for 1.3Moz
- Free milling open pit mine plan is supported by Reserves of the Matilda, Galaxy and Williamson open pit mines and the Golden Age underground mine
- Golden Age underground mine plan recently extended, further extensions being targeted
- Ongoing exploration drilling targeting a “rolling” free milling open pit mine plan of at least 5 years and “rolling” underground mine plan of 6-12 months

# MATILDA OPEN PIT MINE

- Soft, deeply weathered oxide ore
- Grade increases below depletion zone
- M4, M1, M2 and M6 pits are included in the current mine plan
- 10km of stacked, repeating gold lodes with very limited drilling out side the immediate mine plan



Matilda Reserves – depleted to 31 Dec 2017

Mt	Grade (g/t)	Contained Metal (koz)	Strip Ratio (BCM:BCM)
2.7	1.5	133	7.0

Matilda Resources (depleted to 30 June 2017)

	Mt	Grade	koz
Measured	0.9	1.5	44
Indicated	6.2	1.8	350
Inferred	4.7	1.7	255
<b>Total</b>	<b>11.8</b>	<b>1.7</b>	<b>649</b>

# GOLDEN AGE UNDERGROUND

- Golden Age underground mine has generated strong cash flows for the last 3 quarters
- Successful move to owner operator predominately air leg mining method in October 2017 has reduced costs and risk
- Grades in March 2018 quarter averaged 7.6g/t Au
- Evaluation of the economics of the remaining UG resource of 0.9Mt @ 4.5g/t for 129koz Au ongoing
- Golden Age mining studies have now extended underground mine plan another 6 months to December 2018 @ ~2,500oz per quarter
- Exploration targets have been identified with the aim of increasing reserves and rate of mining



**1.**

**Strong  
Operational  
Cashflows**

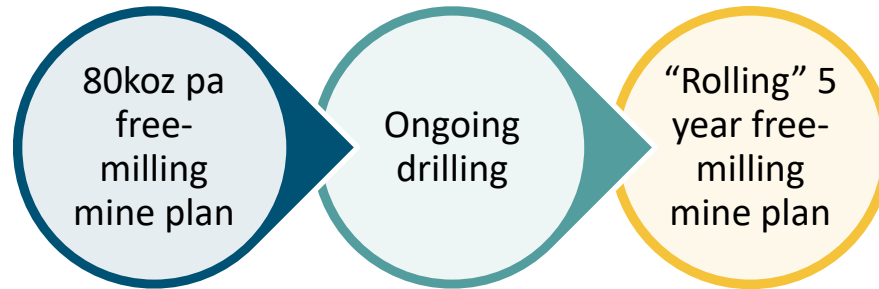
**2.**

**Targeting a  
Rolling 5-year  
Free-Milling  
Mine Plan**

**3.**

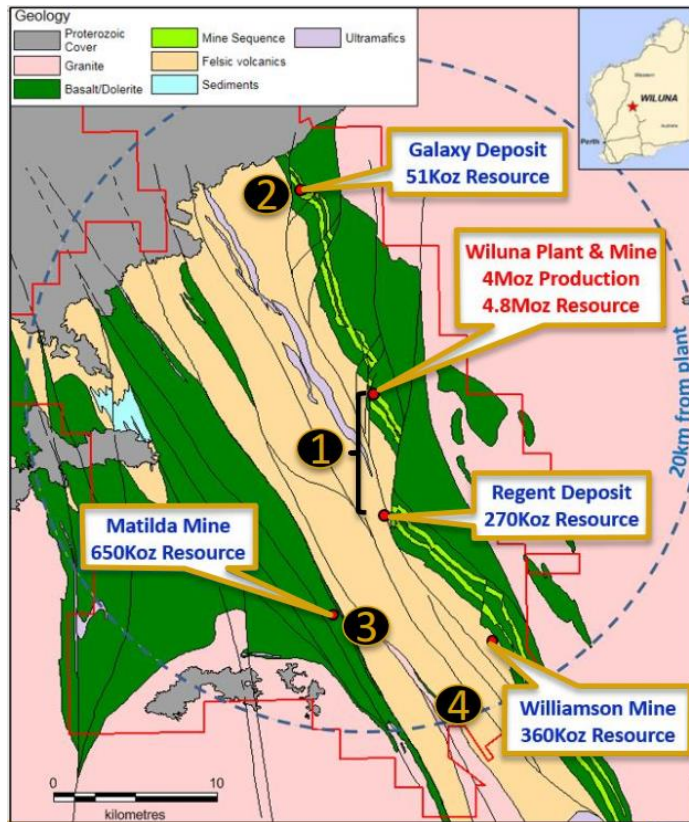
**Outstanding  
Growth  
Opportunities**

# BUILDING A “ROLLING” 5 YEAR MINE PLAN



- Advanced brownfields opportunities to strengthen and lengthen reserves
- Ongoing drilling focussed on achieving a “rolling” free milling mine plan of at least 5 years through extensions, resource conversion to reserves and discovery of new orebodies
- Multiple targets for additional mineralisation identified across multiple systems
- Initial drill program focussed on:
  - extensions of open pit oxide mineralisation at Matilda and Wiluna
  - extensions at Golden Age to maintain a 6 to 12 month underground mine plan

# FOUR LARGE SCALE GOLD SYSTEMS



- Four separate styles of gold mineralization:
  1. Wiluna shear zone hosted sulphide deposits (e.g. East, West, Bulletin, Happy Jack, Regent). Oxide ore generally in the top 60m
  2. Quartz vein hosted free milling deposits (e.g. Golden Age, Galaxy)
  3. Shear zone hosted oxide deposits (e.g. Matilda M1, M4)
  4. Free milling bulk tonnage deposits (e.g. Lake Way, Williamson)

# OUTSTANDING IMMEDIATE GROWTH OPPORTUNITIES



## Lake Way

*All free milling targets*

- **Williamson** – 360Koz resource open along strike and down dip, with only 70Koz included in current mine plan
- **Williamson South** - 22m @ 2.97g/t, 19m @ 2.63g/t – open in all directions
- **Carroll** - 20m @ 2.68g/t, 23m @ 1.53g/t – open in all directions
- **Prior** - 9m @ 5.30g/t, 6m @ 4.57g/t – open in all directions
- **Drilling of these targets commences this month**

## Matilda / Mentelle

*All free milling targets*

- **Matilda northern extensions** – intercept of 4m @ 13.9g/t 2km north of M4
- **M11** – intercept of 6m @ 13.9g/t Au
- **Mentelle** – intercepts of 20m @ 1.27g/t Au and 6m @ 4.57g/t Au on sub-parallel structure to Matilda

## Wiluna

*Free milling and sulphide targets*

- **Golden Age extensions & offset** – high grade quartz vein hosted mineralisation - **Currently drilling**
- **Golden Age open pit**– high grade quartz vein hosted mineralisation - **Drilling completed awaiting assays**
- **East/West cross structures** – **Drilling completed awaiting assays**
- **East/West** – open at depth and to the south
- **Bulletin-Happy Jack** – oxide extensions – **Currently drilling**
- **Regent** – 70koz resource over 700m of strike open along strike and down dip, not included in current mine plan

## Wiluna Tailings Retreatment (Wiltails)

- 37Mt of historical tails accumulated since 1984 – **Further Drilling planned this month**
- Last 13 years of operations tails grade averaged 0.72g/t. 27 initial air core holes drilled confirm averaged 0.71g/t.
- Scoping metallurgical test work suggests whole of ore CIL Leach achieves 45-50% recovery with not requirement to re-grind or concentrate

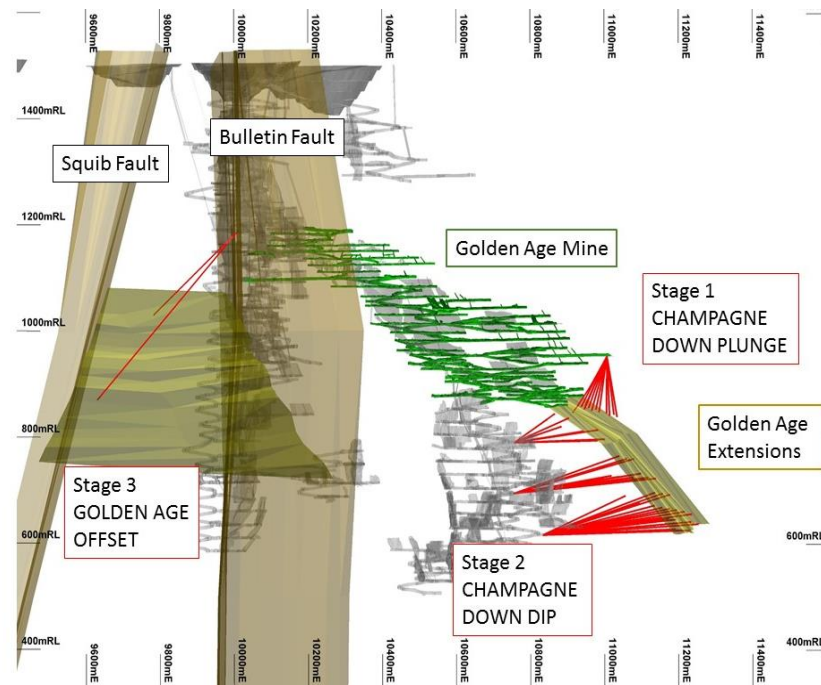
# GOLDEN AGE UNDERGROUND

Approximately 2,500m of diamond drilling commenced in late Mar'18.

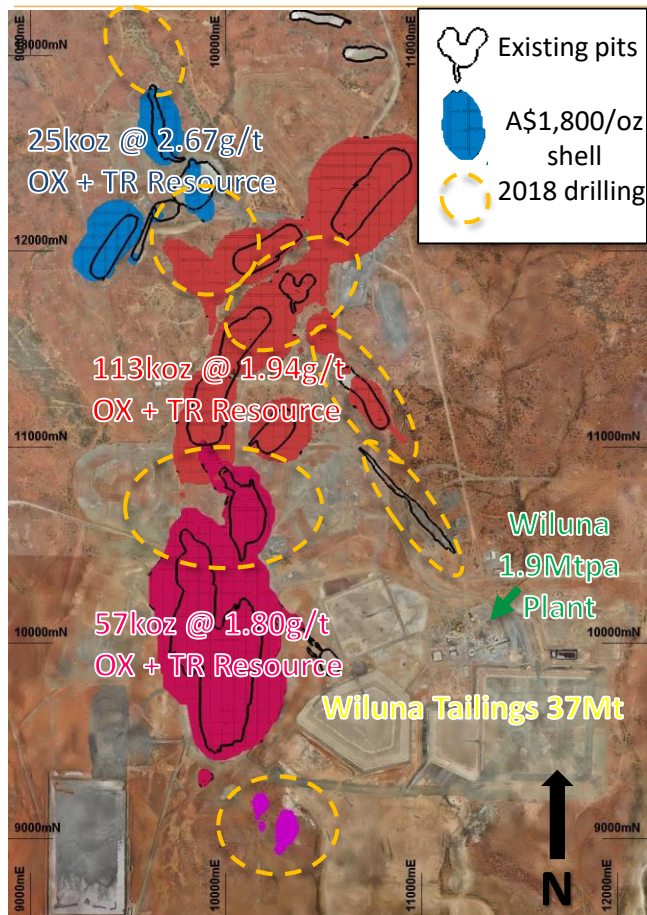
The previous successful reserve drilling programme was completed in June 2017.

Underground drilling aimed at further extending the mine plan commenced late last month. The three initial priority targets are:

- **Champagne Lens down plunge** – SW lateral extension testing a 60-70m down plunge from current mining on the 858 Level.
- **Champagne Lens down dip** - The initial programme will test the mineralisation approximately 160m further down dip from the current mining area.
- **Golden Age Offset Target – NW extension** – Analysis suggests the Golden Age mineralisation could be offset to the north by this major Bulletin shear zone. Only limited drilling to the north-west side of the Bulletin Fault has targeted the offset location.



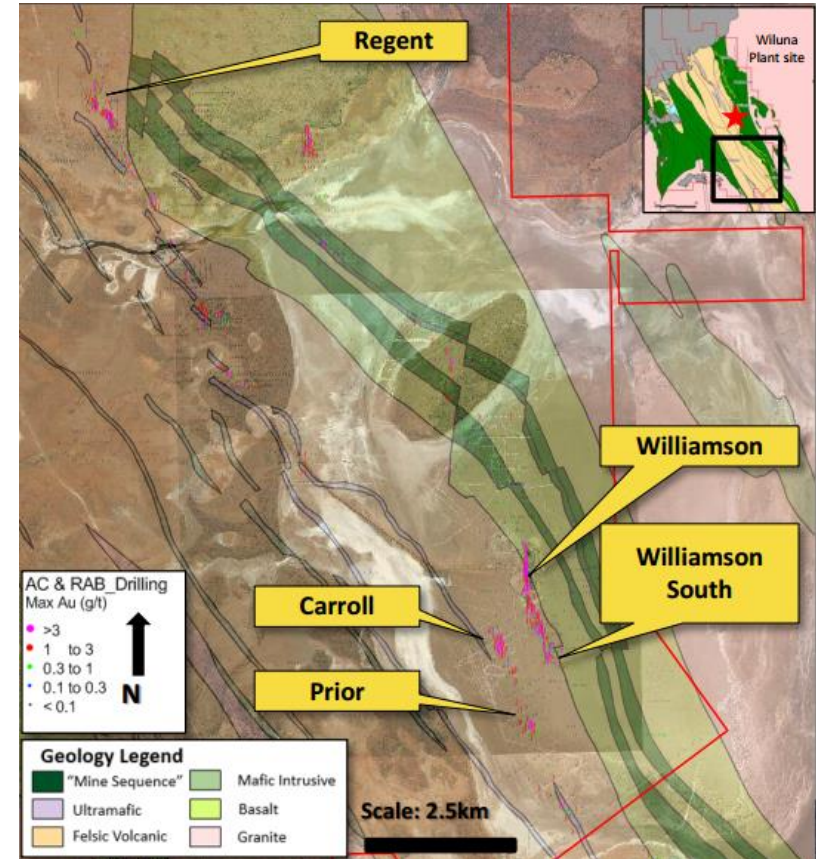
# WILUNA – Free-milling reserve potential



- Generally oxide and transitional ore in the top 60m has been oxidised and is free milling
- During CY17 Blackham completed 77,000m of drilling into the Wiluna open pits which successfully delineated the following oxide and transitional open pit probable reserves of 2.5Mt @ 1.8 g/t = 144koz
- Further metallurgical assays underway to refine material boundaries and potential free milling reserves
- Drilling to commence shortly targeting free milling targets
- Open pits to be re-optimised once new metallurgical boundaries are confirmed

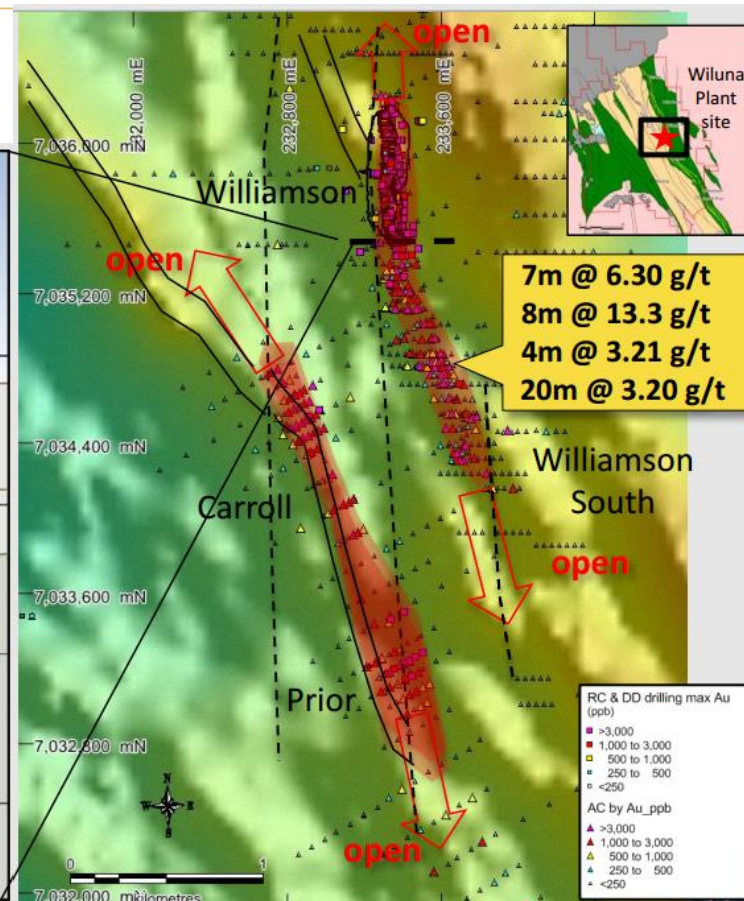
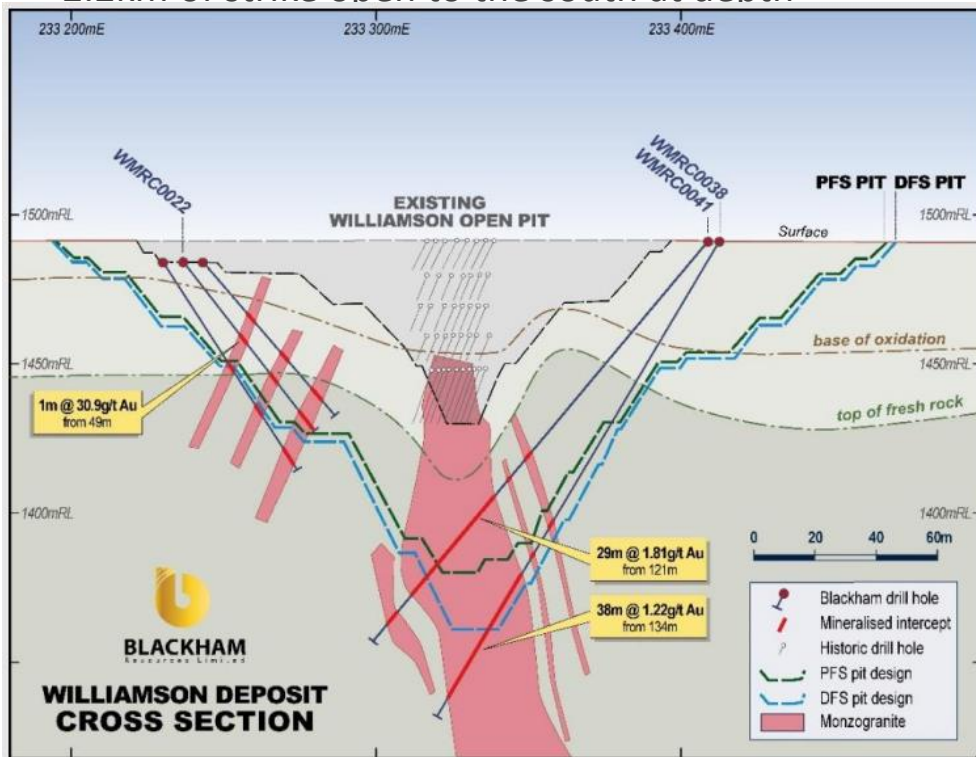
# LAKE WAY – LARGE TONNAGE FREE MILLING POTENTIAL BLACKHAM Resources Limited

- High priority targets identified to extend free milling mine life
- Williamson Mineral Resource of 360koz
- Regent Mineral Resource of 270koz including 78koz of oxide
- 90,000m or air core drilling demonstrate potential for large tonnage open pits
- 2.5kms of strike with continuous mineralization
- Auger drilling, gravity and SAM surveys have defined extensive new targets
- Very limited drilling into primary mineralization
- Multiple targets with >1g/t intercepts
- **Drilling to commence in May 2018**

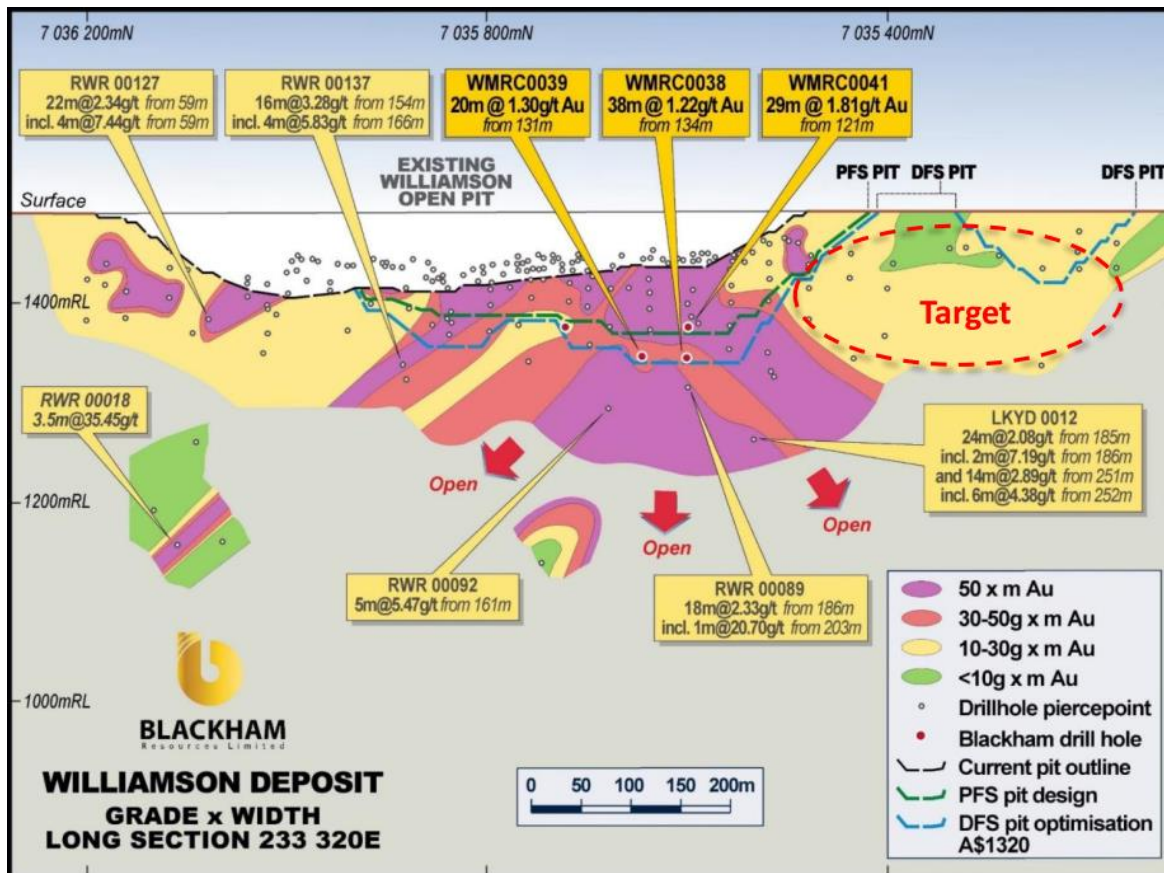


# WILLIAMSON – A 360koz RESOURCE

- 360koz @ 1.6g/t Au resource up to 40m wide
- 2.2km of strike open to the south at depth

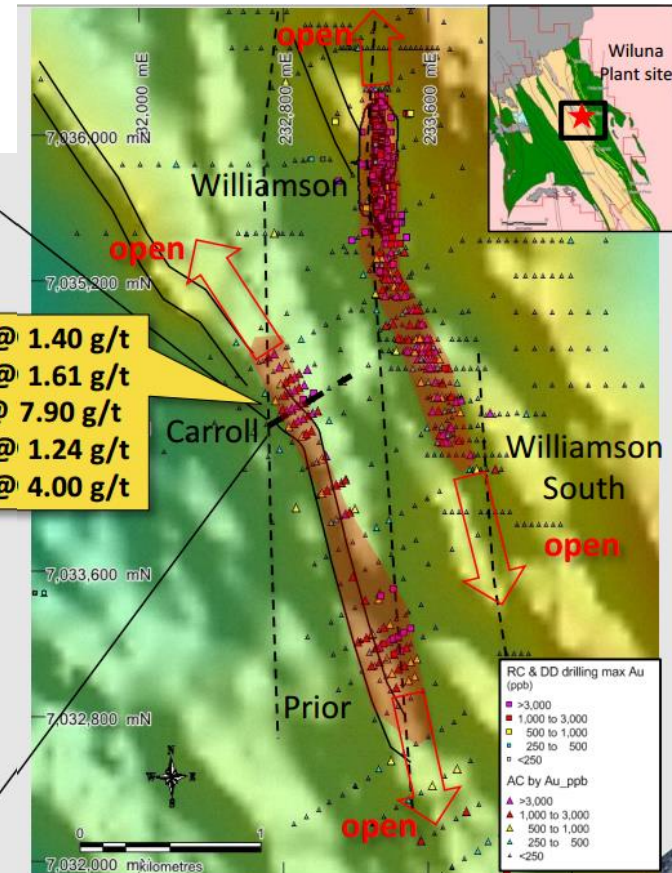
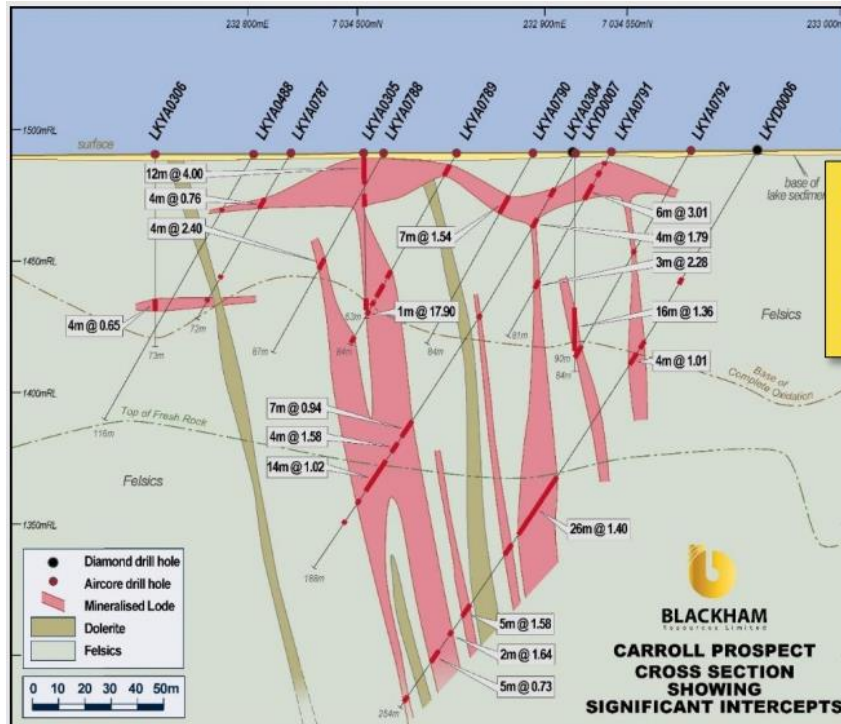


# WILLIAMSON – A 360koz RESOURCE



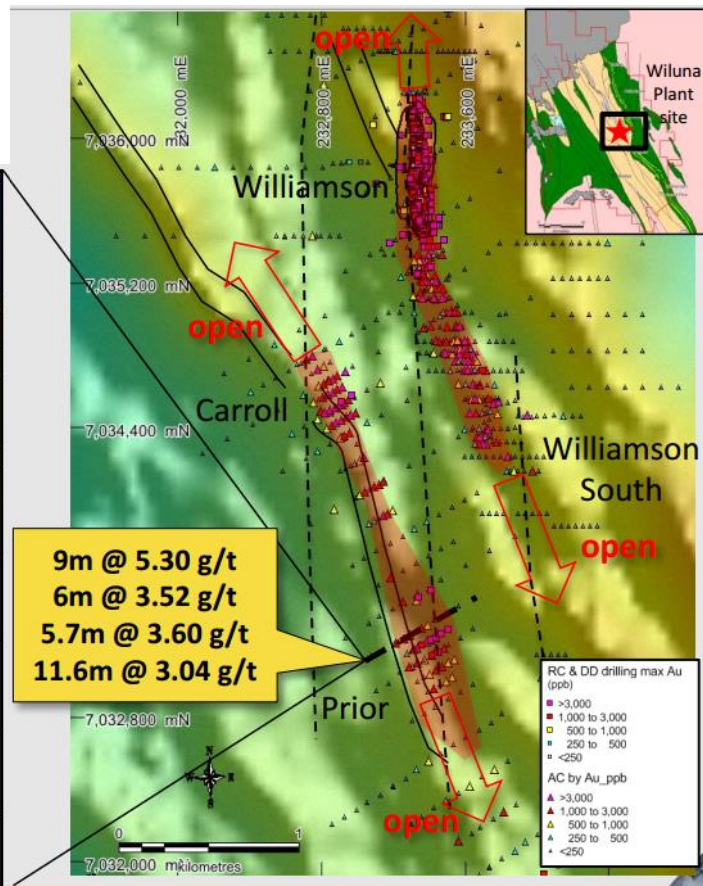
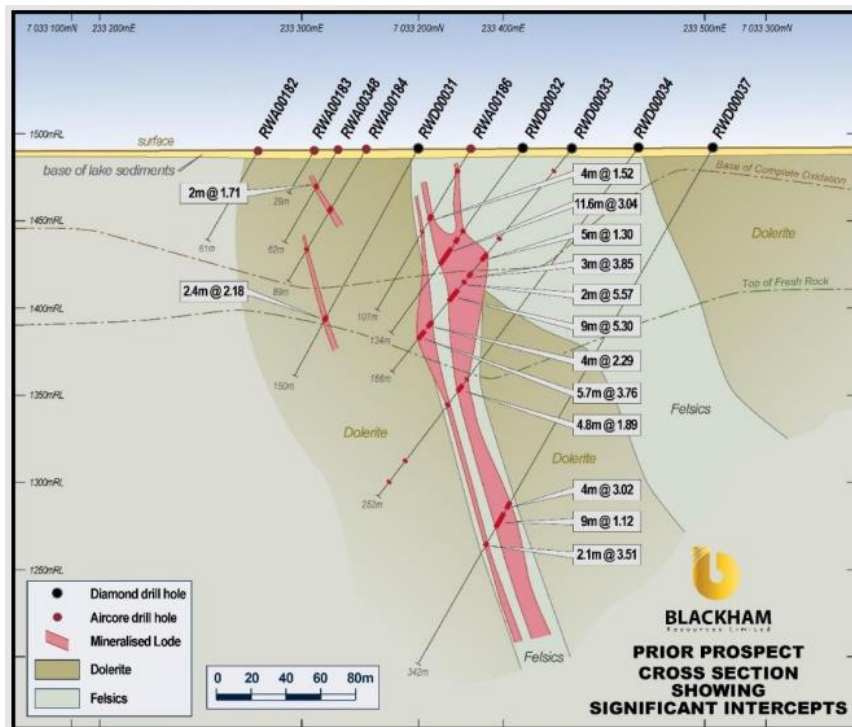
# LAKE WAY – CARROLL PROSPECT

- >1g/t intercepts over 1km strike
- Only 2 diamond holes and no RC holes



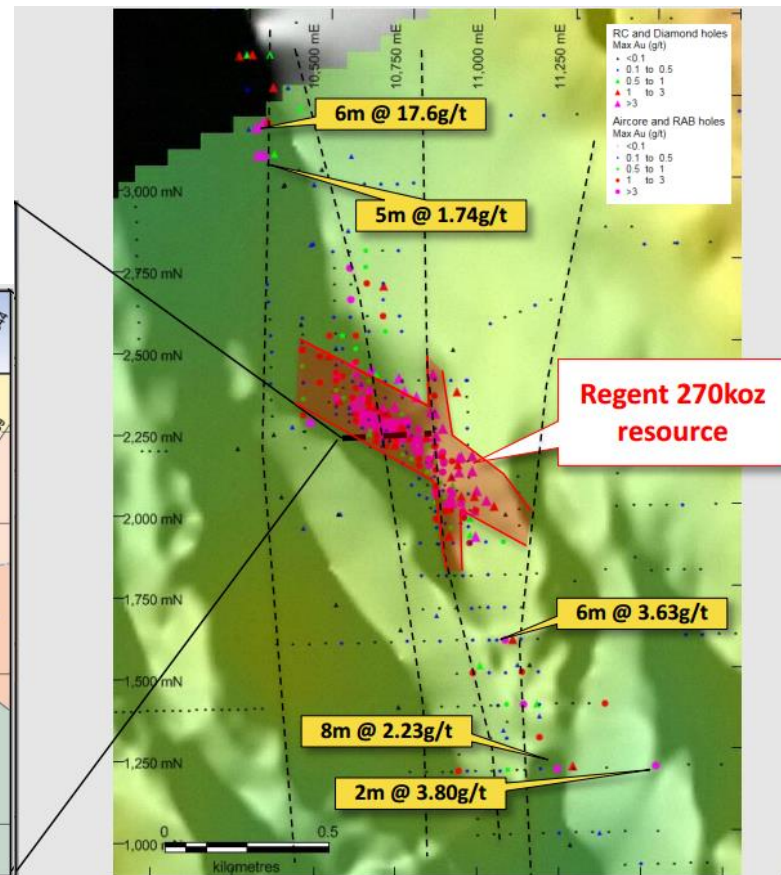
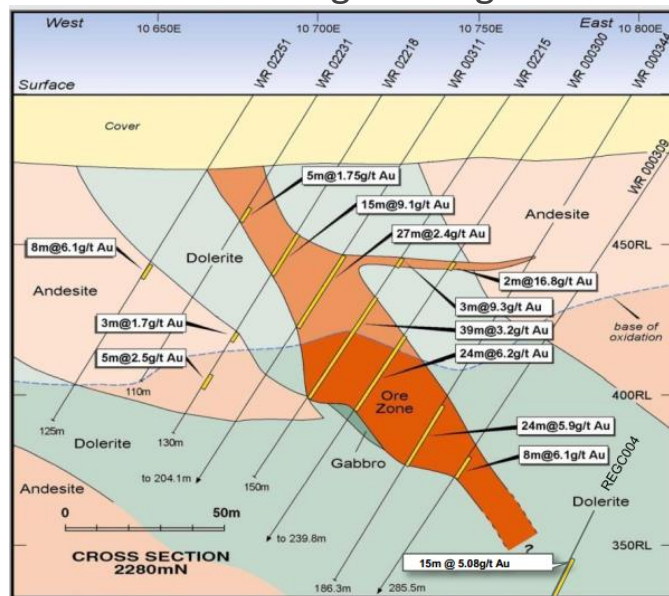
# LAKE WAY – PRIOR PROSPECT

- >1g/t intercepts over 1km strike
- Only 9 diamond holes and no RC holes



# REGENT PROSPECT

- 270koz Mineral Resource including 78koz of oxide
- 700m of strike – open in all directions
- Significant intercepts outside resource area – excellent grades and widths
- Mining studies advanced – more drilling to bring it into mine plan



**1.**

**Strong  
Operational  
Cashflows**

**2.**

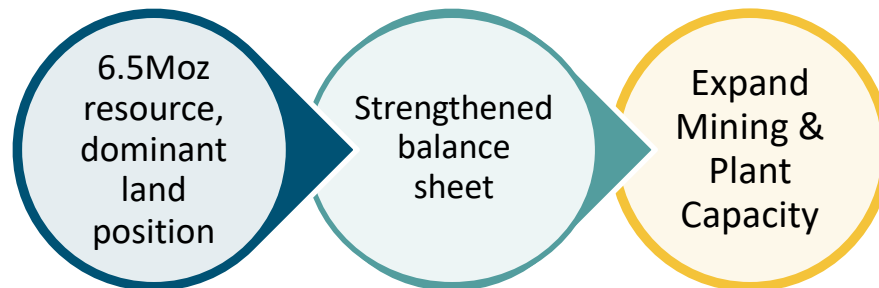
**Targeting a  
Rolling 5-year  
Free-Milling  
Mine Plan**

**3.**

**Outstanding  
Growth  
Opportunities**

# OUTSTANDING GROWTH OPPORTUNITIES

- Initial focus is on increasing free milling operations to a rolling five year mine plan
- Longer term, focus will move to extracting value from across Blackham's dominant land position and 6.5Moz (65Mt @ 3.1g/t) resource base
- Since June 2016:
  - 1.4 million ounces added to the total resource base <sup>(1)</sup>
  - 640,000 ounces added to total reserve base <sup>(1)</sup>
- Blackham has a strong history in successfully exploration adding resources at less than A\$7/oz
- Long-life sulphide mine life beyond 9 years already demonstrated by Expansion PFS <sup>(2)</sup>



<sup>(1)</sup> See ASX announcement 3 August 2017 for further information

<sup>(2)</sup> See ASX announcement 30 August 2017 for further information

# EXPANSION GROWTH STRATEGY ~ 3Mtpa @ 3g/t

**Stage 1**  
Free milling  
Operation  
1.8Mtpa

**Stage 2**  
Sulphides  
1.5Mtpa

**Expanded  
Operation  
3.3 Mtpa**

## Increasing Economic Potential

- Large Base Load open pit & High Grade underground
- 6yrs avg +200kozpa
- Mine plan: 19Mt @ 2.8g/t 1.7Moz Au
- 4.8Moz resource outside the mine plan and significant underground potential

### Expansion PFS Highlights<sup>1</sup>

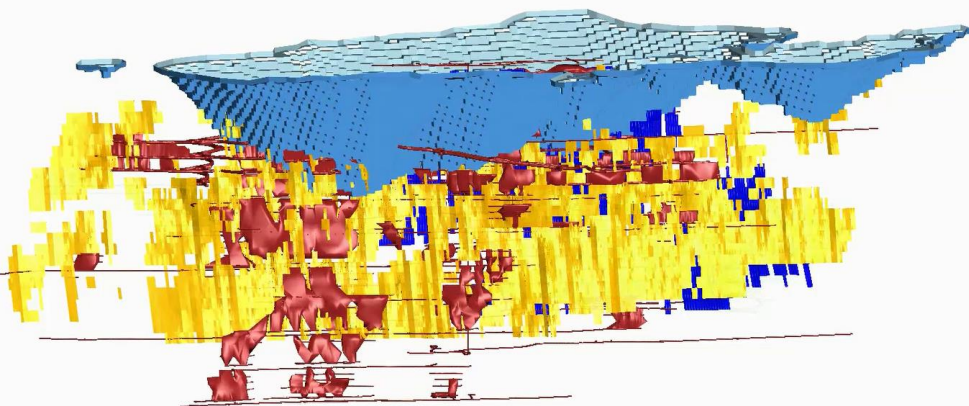
Initial Gold Production	1.5Moz Au over initial 9 years
Open Pit Mining Inventory	15Mt @ 2.3g/t for 1.1Moz
UG Mining Inventory	4Mt @ 4.7g/t for 608koz
Expanded plant capacity	Up to 3.3Mtpa
Gold Production average	207,000ozpa (first 6 yrs after expansion)
LOM All in sustaining costs	A\$1,058/oz or US\$836/oz
Project cash flows A\$571M	Initial Capex A\$114M
NPV <sub>8%</sub> A\$360M	IRR 123%

1) Refer to ASX released dated 30<sup>th</sup> August 2017

# WILUNA OPEN PITS – VERY LONG AND HIGH GRADE



\$1800 Pit Optimisation



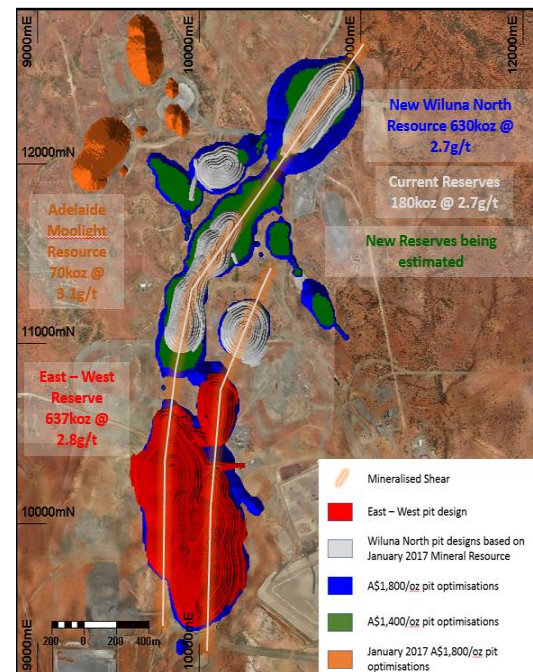
Blue: West Lode UG 3.0g/t  
Optimised Shapes

Orange: East Lode UG 3.0g/t  
Optimised Shapes

**Wiluna Open pits  
mine plan  
817koz @ 2.7g/t  
13:1 SR (PFS)**

**Wiluna north  
resource  
increased 310koz  
since PFS  
New reserves to  
be estimated**

**Adelaide,  
Moonlight, Lone  
Hand Resource to  
be updated**



# A COMPELLING INVESTMENT OPPORTUNITY

**1.**

**Strong  
Operational  
Cashflows**

**2.**

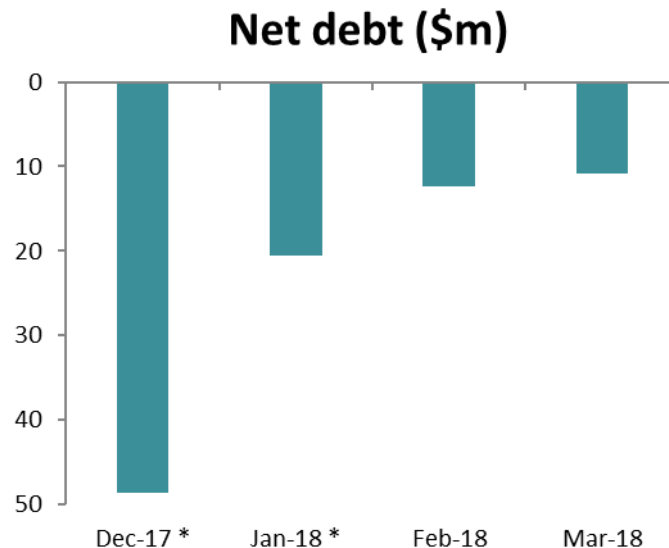
**Targeting a  
Rolling 5-year  
Free-Milling  
Mine Plan**

**3.**

**Outstanding  
Growth  
Opportunities**

# STRENGTHENED BALANCE SHEET

- Net debt of \$10.4 million at 31 March 2018
- Strong operating cash flows expected, targeting a net cash position by the end of 2018
- Investments already made in 2018 on building stockpiles and increasing tailings capacity
- Limited capex required in short term
- Actively looking to divest non-core assets to further strengthen the balance sheet
- Well funded to continue advancing its exploration program targeting additional free milling mineralisation and reserve conversion of its 6.5Moz of resources



\* Refer to 15 January 2018 presentation for basis of calculation of Dec-17 and Jan-18 net debt balance

# COMPELLING INVESTMENT OPPORTUNITY

- Free-milling production plan delivering strong operational cashflow
- Strengthened balance sheet and targeting a net cash position by the end of 2018
- Well funded for exploration program to strengthen and lengthen reserves – multiple targets in multiple mineralised systems
- 1.2Moz reserves
- Dominant land position and 6.5Moz resource provides significant upside potential
- Undervalued in comparison to Australian gold producing peers

Enterprise Value	A\$109 million	Peer Averages <sup>1</sup>
EV / Reserve ounce	A\$91/oz	A\$406/oz
EV / Resource ounce	A\$17/oz	A\$104/oz
EV / Annual Production (estimated as 80koz)	A\$1,360/ozpa	

1. Source



# CONTACT

For further information on Blackham please contact:

**Milan Jerkovic**

Chairman

Blackham Resources Limited

Office: +618 9322 6418

**Bryan Dixon**

Managing Director

Blackham Resources Limited

Mobile: +618 9322 6418

**Jim Malone**

Investor Relations Manager

Blackham Resources Limited

Mobile: +61 419 537 714

**John Gardner**

Media Enquiries

Citadel Magnus

Office: +618 6160 4901



# GOLD RESERVES

## Matilda Gold Projects Reserve Summary

OPEN PIT RESERVES									
Mining Centre	Proven			Probable			Total		
	Mt	g/t Au	Koz Au	Mt	g/t Au	Koz Au	Mt	g/t Au	Koz Au
Matilda Mine OP	0.9	1.2	37	2.2	1.6	114	3.1	1.5	151
Galaxy OP	0.7	1.3	29	0.1	0.8	4	0.8	1.2	33
Williamson Mine				1.4	1.5	67	1.4	1.5	67
Wiluna Open Pits				7.7	2.7	669	7.7	2.7	669
Stockpiles				0.4	0.9	11	0.4	0.9	11
OP Total	1.6	1.3	66	12	2.3	865	13	2.2	931
UNDERGROUND RESERVES									
Mining Centre	Proven			Probable			Total		
	Mt	g/t Au	Koz Au	Mt	g/t Au	Koz Au	Mt	g/t Au	Koz Au
Golden Age UG	0.04	5.6	7	0.02	8.7	4	0.06	6.4	12
East West UG				0.56	5.0	91	0.56	5.0	91
Bulletin UG <sup>1</sup>				1.15	4.6	168	1.15	4.6	168
UG Total	0.04	5.6	7	1.73	4.7	263	1.8	4.7	271
Grand Total	1.7	1.4	73	13.6	2.6	1,128	15.2	2.6	1,201

1) Bulletin Underground includes reserves from the Essex, Creakshear and Lennon underground mining areas

Calculations have been rounded to the nearest 10,000 t of ore, 0.1 g/t Au grade and 1,000 oz. Au metal. Refer to ASX release dated 30<sup>th</sup> August 2017 for additional details

# GOLD RESOURCES

## Matilda Gold Projects Resource Summary

OPEN PIT RESOURCES												
Mining Centre	Measured			Indicated			Inferred			Total 100%		
	Mt	g/t Au	Koz Au	Mt	g/t Au	Koz Au	Mt	g/t Au	Koz Au	Mt	g/t Au	Koz Au
Matilda Mine OP	0.9	1.5	44	6.1	1.7	340	4.1	1.4	185	11.1	1.6	569
Galaxy	0.7	1.4	32	0.1	3.7	5	0.2	2.8	16	1.0	1.6	53
Williamson Mine				3.3	1.6	170	3.8	1.6	190	7.1	1.6	360
Wiluna OP <sup>1</sup>				13.6	2.6	1150	3.3	3.3	355	16.9	2.8	1,505
Regent				0.7	2.7	61	3.1	2.1	210	3.8	2.2	271
Stockpiles				0.4	0.9	11				0.4	0.9	11
OP Total	1.6	1.5	76	24	2.2	1,737	15	2.1	956	40	2.1	2,769
UNDERGROUND RESOURCES												
Mining Centre	Measured			Indicated			Inferred			Total 100%		
	Mt	g/t Au	Koz Au	Mt	g/t Au	Koz Au	Mt	g/t Au	Koz Au	Mt	g/t Au	Koz Au
Golden Age UG	0.1	4.2	8	0.2	7.1	46	0.6	3.8	75	0.9	4.5	129
Wiluna UG				8.2	5.5	1441	14.6	4.4	2086	23	4.8	3,527
Matilda Mine UG				0.1	2.5	10	0.6	3.6	70	0.7	3.6	80
UG Total	0.1	4.2	8	9	5.5	1,497	16	4.4	2,231	24	4.8	3,736
Grand Total	1.7	1.5	84	33	3.1	3,234	30	3.3	3,187	65	3.1	6,505

Mineral Resource estimates are not precise calculations, being dependent on the interpretation of limited information on the location shape and continuity of the occurrence and on the available sampling results. The figures in the Table above are rounded to two significant figures to reflect the relative uncertainty of the estimate.

See ASX announcement 12 October 2017 for further information

# DISCLAIMERS AND IMPORTANT INFORMATION

This presentation includes certain statements that may be deemed 'forward-looking statements'. All statements that refer to any future production, resources or reserves, exploration results and events or production that Blackham Resources Ltd ('Blackham' or 'the Company') expects to occur are forward-looking statements. Although the Company believes that the expectations in those forward-looking statements are based upon reasonable assumptions, such statements are not a guarantee of future performance and actual results or developments may differ materially from the outcomes. This may be due to several factors, including market prices, exploration and exploitation success, and the continued availability of capital and financing, plus general economic, market or business conditions. Investors are cautioned that any such statements are not guarantees of future performance, and actual results or performance may differ materially from those projected in the forward-looking statements. The Company does not assume any obligation to update or revise its forward-looking statements, whether as a result of new information, future events or otherwise.

*The information contained in the report that relates to Exploration Targets and Exploration Results at the Matilda/Wiluna Gold Operation ("Operation") is based on information compiled or reviewed by Mr Bruce Kendall, who is a full-time employee of the Company. Mr Kendall is a Member of the Australian Institute of Geoscientists and has sufficient experience which is relevant to the style of mineralisation and type of deposit under consideration and to the activity which is being undertaken to qualify as a Competent Person as defined in the 2012 Edition of the 'Australasian Code for Reporting of Exploration Results, Mineral Resources and Ore Reserves'. Mr Kendall has given consent to the inclusion in the report of the matters based on this information in the form and context in which it appears.*

*The information contained in the report that relates to Mineral Resources is based on information compiled or reviewed by Mr Marcus Osiejak, who is a full-time employee of the Company. Mr Osiejak, is a Member of the Australian Institute of Mining and Metallurgy and has sufficient experience which is relevant to the style of mineralisation and type of deposit under consideration and to the activity which is being undertaken to qualify as a Competent Person as defined in the 2012 Edition of the 'Australasian Code for Reporting of Exploration Results, Mineral Resources and Ore Reserves'. Mr Osiejak has given consent to the inclusion in the report of the matters based on this information in the form and context in which it appears. With regard to the Operations Mineral Resources, the Company is not aware of any new information or data that materially affects the information included in this report and that all material assumptions and parameters underpinning Mineral Resource Estimates as reported in the market announcements 12 October 2017 continue to apply and have not materially changed.*

*The information contained in the report that relates to Ore Reserves for the underground mines at the Operation is based on information compiled or reviewed by Matthew Keenan. Mr Keenan confirmed that he has read and understood the requirements of the 2012 Edition of the Australasian Code for Reporting of Exploration Results, Mineral Resources and Ore Reserves (JORC Code 2012 JORC Edition). He is a Competent Person as defined by the JORC Code 2012 Edition, having more than five years' experience which is relevant to the style of mineralisation and type of deposit described in the Report, and to the activity for which he is accepting responsibility. Mr Keenan is a Member of The Australasian Institute of Mining and Metallurgy, has reviewed the Report to which this consent statement applies and is a full time employee working for Entech Pty Ltd having been engaged by Blackham Resources Ltd to prepare the documentation for the Operation on which the Report is based, for the period ended 30 June 2017. He disclosed to the reporting company the full nature of the relationship between himself and the company, including any issue that could be perceived by investors as a conflict of interest. Mr Keenan verifies that the Report is based on and fairly and accurately reflects in the form and context in which it appears, the information in his supporting documentation relating to Ore Reserves.*

*The information contained in the report that relates to Ore Reserves for the Operations Open Pits is based on information compiled or reviewed by Steve O'Grady. Mr O'Grady confirmed that he has read and understood the requirements of the 2012 Edition of the Australasian Code for Reporting of Exploration Results, Mineral Resources and Ore Reserves (JORC Code 2012 JORC Edition). He is a Competent Person as defined by the JORC Code 2012 Edition, having more than five years' experience which is relevant to the style of mineralisation and type of deposit described in the Report, and to the activity for which he is accepting responsibility. Mr O'Grady is a Member of The Australasian Institute of Mining and Metallurgy, has reviewed the Report to which this consent statement applies and is a full time employee working for Interline Engineering Consultants having been engaged by Blackham Resources Ltd to prepare the documentation for the Operation on which the Report is based, for the period ended 30 June 2017. He disclosed to the reporting company the full nature of the relationship between himself and the company, including any issue that could be perceived by investors as a conflict of interest. Mr O'Grady verifies that the Report is based on and fairly and accurately reflects in the form and context in which it appears, the information in his supporting documentation relating to Ore Reserves.*

*The information contained in the report that relates to Ore Reserves for the Golden Age Underground is based on information compiled or reviewed by Richard Boffey. Mr Boffey confirmed that he has read and understood the requirements of the 2012 Edition of the Australasian Code for Reporting of Exploration Results, Mineral Resources and Ore Reserves (JORC Code 2012 JORC Edition). He is a Competent Person as defined by the JORC Code 2012 Edition, having more than five years' experience which is relevant to the style of mineralisation and type of deposit described in the Report, and to the activity for which he is accepting responsibility. Mr Boffey is a Member of The Australasian Institute of Mining and Metallurgy, has reviewed the Report to which this consent statement applies and is a full time employee working for Blackham Resources Limited and prepared and reviewed the documentation for the Golden Age Underground area at the Operation on which the Report is based, for the period ended 30 June 2017. He disclosed to the reporting company the full nature of the relationship between himself and the company, including any issue that could be perceived by investors as a conflict of interest. Mr Boffey verifies that the Report is based on and fairly and accurately reflects in the form and context in which it appears, the information in his supporting documentation relating to Ore Reserves.*