

Directors

Damien O'Reilly (Chairman)
 Glyn Povey (Managing Director)
 Gary Castledine
 Neville Bassett
 Robert Hyndes
 Brian Williams
Company Secretary
 Neville Bassett

Address

Level 1, 3 Richardson Street
 West Perth WA 6005
 P.O. Box 1325
 West Perth WA 6872
 Australia

Contact

P: +61 8 6188 7800
 F: +61 8 6188 7899
contact@vectorresources.com.au
www.vectorresources.com.au

Share Registry

Link Market Services Ltd
 Ground Floor, 178 St Georges Tce
 Perth WA 6000
 Australia
 P: +61 1300 554 474
 F: +61 2 9287 0303
www.linkmarketservices.com.au

> **HIGH-GRADE GOLD INTERCEPTS AT MT DIMER**

Key Highlights

- **Major high grade gold intercepts identified at Lightning, Anomaly 2 and Golden Slipper South deposits at Mt Dimer**
- **Significant intercepts:**
 - **6m @ 24.81g/t from 62m**
 - **4m @ 21.71 g/t from 50m**
 - **4m @ 20.98 g/t from 87m**
 - **10m @ 14.39 g/t from 76m**
 - **7m @ 13.07 g/t from 48m**
 - **9m @ 10.18g/t from 54m**
 - **7m @ 5.28g/t from 41m**
 - **3m @ 12.66g/t from 93m**
 - **6m @ 3.99g/t from 92m**
 - **18m @ 2.86g/t from 46m**
- **The results of the high priority drilling carried out at Silver Wing are pending**

Vector Resources Ltd (ASX: VEC) ("Vector" or "the Company") is pleased to announce that it has received initial assay results from the high priority drilling of the Phase 1 RC program at the company's flagship project Mt Dimer which commenced on 7th August 2011.

The Mt Dimer tenements cover more than 2,029ha with priority holes of the Phase 1 drilling targeting near mine locations of Lightning, Anomaly 2, Silver Wing and Golden Slipper South. Mt Dimer currently hosts a JORC compliant measured, indicated and inferred resource of 377,200 tonnes at 5.8 g/t for 70,230 ounces of contained gold. *

Project	Measured Resource			Indicated Resources			Inferred Resource			Total Resource		
	Tonnes	g/t Au	Total Oz Au	Tonnes	g/t Au	Total Oz Au	Tonnes	g/t Au	Total Oz Au	Tonnes	g/t Au	Total Oz Au
Mt Dimer	88,800	4.6	10,380	10,000	3.2	1,050	278,400	6.4	58,800	377,200	5.8	70,230

The results of the drilling program received to date have identified substantial mineralisation at depth and along the strike of Lightning, while the drilling at Anomaly 2 has identified a significant intercept that will require further delineation for resource construction.

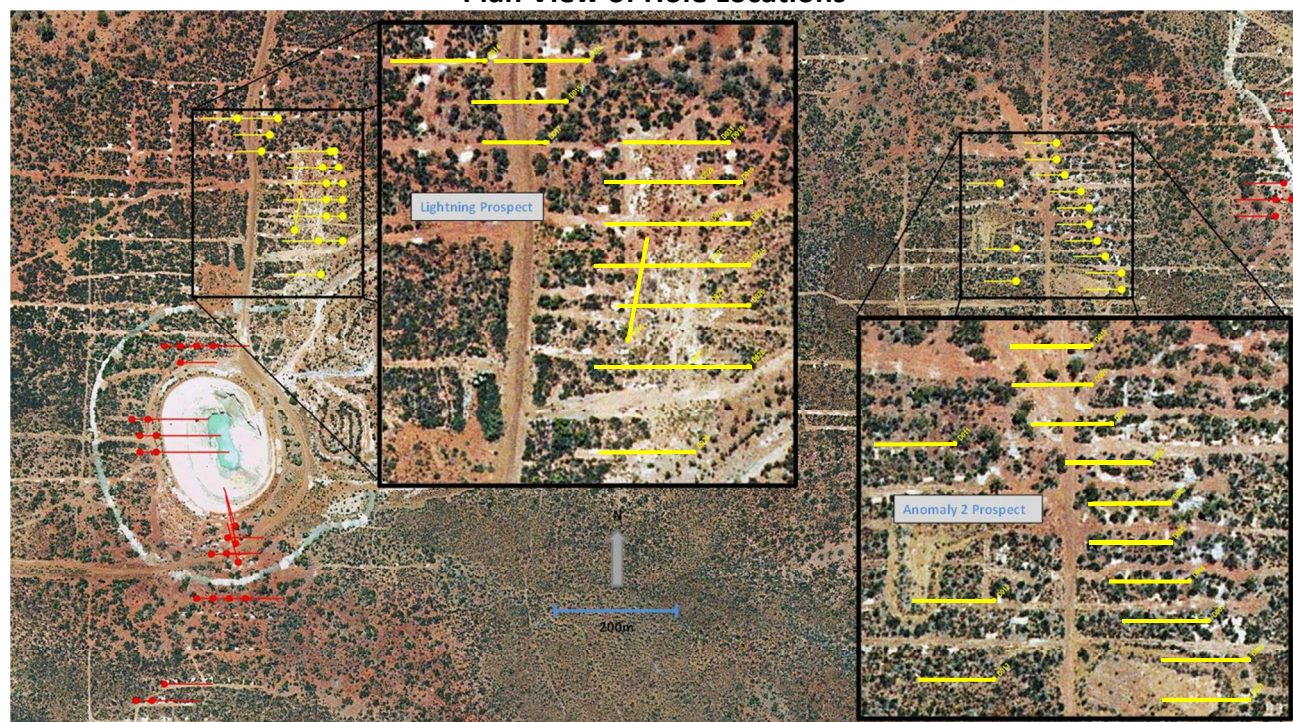
It is anticipated that these results will increase the current resource.

Drilling Program The reverse circulation (RC) Phase 1 drill program consists of 147 drill holes totalling 14,770 metres. To date 48 holes for 4,364 metres have been completed targeting four specific areas of Lightning, Anomaly 2, Silver Wing and Golden Slipper South. The significant intercepts of Lightning and Anomaly 2 are detailed below including the first hole at Golden Slipper South.

Significant Intercepts

Prospect	Hole	Interval	Significant Interval	Including
Lightning	D019	79-80m	1m @ 1.04g/t from 79m	
Lightning	D019	81-83m	2m @ 1.3g/t from 81m	
Lightning	D019	103-104m	1m @ 3.93g/t from 103m	
Lightning	D020	48-55	7m @ 13.07g/t from 48m	1m @ 21.8g/t from 49m, 1m @ 38.97g/t from 50m, 1m @ 27.64g/t from 53m
Lightning	D021	76-86	10m @ 14.39g/t from 76m	5m @ 15.86g/t from 76m, 3m @ 21.4g/t from 83m
Lightning	D021	106-110m	4m @ 1.58g/t from 106m	
Lightning	D022	44-46m	2m @ 3.54g/t from 44m	1m @ 5.88g/t from 44m
Lightning	D024	79-80m	1m @ 3.45g/t from 79m	
Lightning	D025	46-64m	18m @ 2.86g/t from 46m	2m @ 5.9g/t from 46m, 6m @ 4.68g/t from 53m, 2m @ 4.12g/t from 62m
Lightning	D026	92-98m	6m @ 3.99g/t from 92m	1m @ 6.94g/t from 92m, 4m @ 4.21g/t from 94m
Lightning	D027	41-48m	7m @ 5.28g/t from 41m	3m @ 11.22g/t from 41m
Lightning	D028	87-91m	4m @ 20.98g/t from 87m	1m @ 12.54g/t from 88m, 1m @ 67.25g/t from 89m
Lightning	D030	2-4m	2m @ 1.46g/t from 2m	
Lightning	D030	62-68m	6m @ 24.81g/t from 62m	2m @ 5.36g/t from 64m, 1m @ 136g/t from 66m
Lightning	D030	73-74m	1m @ 2.4g/t from 73m	
Lightning	D031	54-63m	9m @ 10.18g/t from 54m	3m @ 20g/t from 54m, 1m @ 30.3g/t from 62m
Anomaly 2	D004	50-54m	4m @ 21.71g/t from 50m	1m @ 11.85g/t from 50m, 1m @ 28.90g/t from 51m, 1m @ 19.40g/t from 52m, 1m @ 26.70g/t from 53m
Anomaly 2	D005	49-50m	1m @ 1.35g/t from 50m	
Anomaly 2	D006	58-59m	1m @ 1.68g/t from 58m	
Anomaly 2	D008	33-39m	6m @ 1.29g/t from 33m	1m @ 3.24g/t from 34m
Anomaly 2	D012	57-58m	1m @ 5.32g/t from 57m	
G-Slipper Sth	D032	43-93m	50m @ 0.65g/t from 32m	
G-Slipper Sth	D032	93-96m	3m @ 12.66g/t from 93m	1m @ 23.6g/t from 93m, 1m @ 2.34g/t from 95m

Plan View of Hole Locations

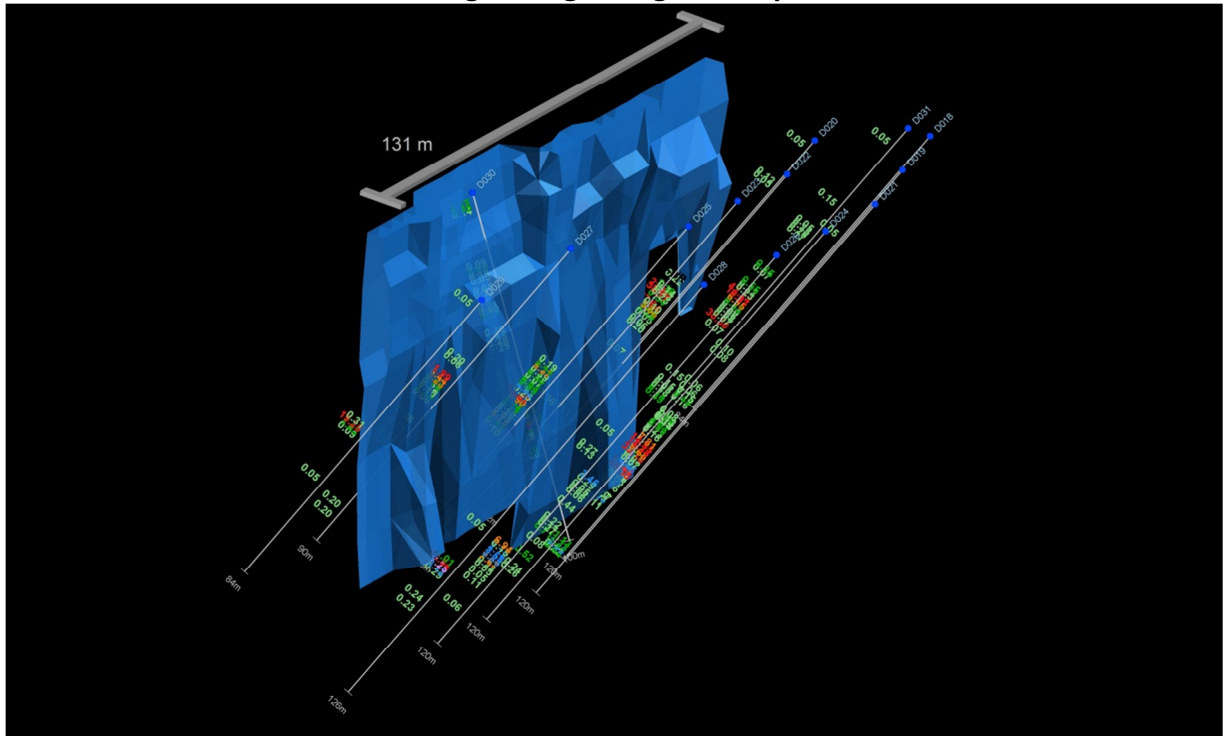


Of the priority one targets, 16 holes totalling 1,418 metres of sample results are still pending for Silver Wing and Golden Slipper South. The remaining 80% of this program will be completed once the Phase 2 drill program at the Gwendolyn project is complete.

Lightning

Lightning was discovered during the sterilisation drilling for the Golden Slipper waste dump. The Lightning mineralisation consists of quartz veining and is hosted by granite. An underlying sheared mafic unit has been interpreted from the low-level magnetic data. Current drilling has greatly enhanced our understanding of the geology and mineralisation of the Lightning Prospect.

Image of Lightning Intercepts



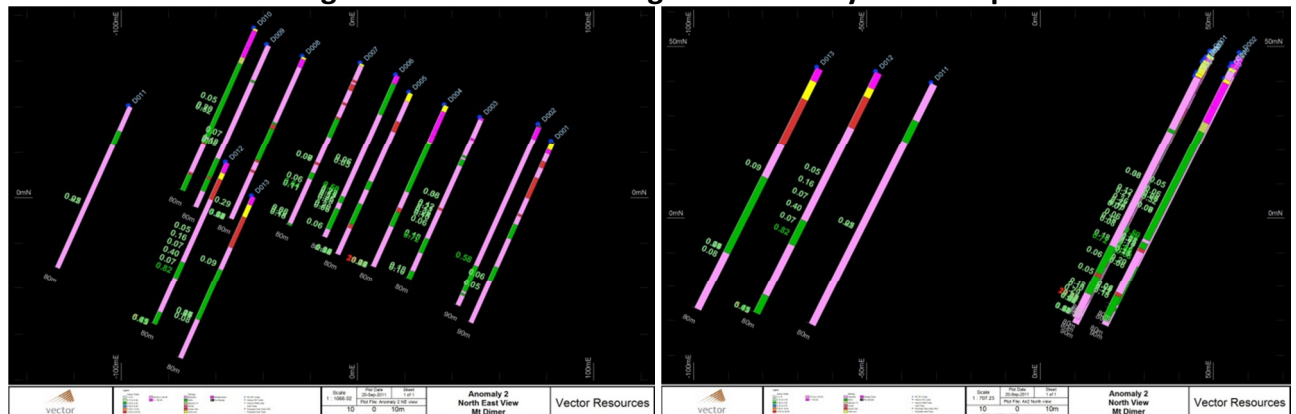
The drilling at Lightning has clearly shown that the mineralisation continues at depth and along strike. Significant intercepts were achieved during the drilling that included 6m @ 24.81g/t inclusive of 1m @ 136g/t, 4m @ 20.98g/t , 7m @ 13.07g/t, 10m @ 14.39g/t, 9m @ 10.18g/t , 7m @ 5.28g/t , 18m @ 2.86g/t, 6m @ 3.99g/t.

Anomaly 2

Anomaly 2 is a broad area which contains several zones of mineralisation. It lies approximately 1km to the east of Lightning. Two shallow laterite pits (Anomaly 2 East & West) were mined in 1995.

Typical of the Mt Dimer lodes this gold mineralisation occurs in quartz veins within a sheared chlorite/biotite schist. Current drilling has greatly enhanced our understanding of the geology and mineralisation of the Anomaly 2 Prospect, with significant intercepts of 4m @ 21.71g/t from 50m inclusive of 1m @ 11.85g/t from 50m, 1m @ 28.90g/t from 51m, 1m @ 19.40g/t from 52m, 1m @ 26.70g/t from 53m.

Long and Cross Section Images of Anomaly 2 Intercepts



Significant Upside

Mt Dimer has the potential to increase the current resource, with encouraging fundamentals including:

- Lightning’s new high grade widths along strike to the SW and NE and at depth.
- High grade drill intercept at Anomaly 2 identifying new mineralisation.
- 80% of this Phase 1 drill program at Mt Dimer is still in progress.

ENDS

Competent Person’s Statement

Information in this report pertaining to mineral resources and exploration results was compiled by Mr P Thomas who is a member of Aus.I.M.M. Mr P Thomas has sufficient experience which is relevant to the style of mineralisation and type of deposit under consideration and to the activity which he is undertaking to qualify as a Competent Person as defined in the 2004 Edition of the ‘Australasian Code for Reporting of Exploration Results, Mineral Resources and Reserves’. Mr P Thomas consents to the inclusion in the report of the matters based on his information in the form and context which it appears.

* Golden Iron Resources Prospectus May 2010.