

**Triton Minerals Ltd  
Mozambique Projects Update**

**5th Graphite & Graphene  
Conference London**

**8 December 2015**

**Alfred Gillman  
Technical Director**



**TRITON  
MINERALS LTD**

## **Introduction**

Company Introduction

Project Location

Project Status

## **Projects**

Nicanda Hill

Nicanda West

DFS

Product range

Ancuabe

## Disclaimer

### Competent Person's Statement

The information in this presentation that relates to Mineral Resource estimate at the Nicanda Hill deposit on Balama North project is based on, and fairly represents, information and supporting documentation prepared by Mr Mark Drabble, who is a Member of the Australasian Institute of Mining & Metallurgy. Mr Drabble is not a full-time employee of the Company. Mr Drabble is employed as a Consultant from Optiro Pty. Ltd. Mr Drabble has sufficient experience which is relevant to the style of mineralisation and type of deposit under consideration and to the activity which he is undertaking to qualify as a Competent Person as defined in the 2012 Edition of the 'Australasian Code for Reporting of Mineral Resources and Ore Reserves (the JORC Code)'. Mr Drabble consents to the inclusion in this report the exploration results and the supporting information in the form and context as it appears.

The information in this presentation that relates to Exploration Results on Balama North project is extracted from the reports entitled ASX Release "Balama North Project Update" created 5 March 2014, ASX Release "Positive Metallurgical Results For Nicanda Hill" created 16 September 2014, ASX Release "Further Positive Drilling Results From Nicanda Hill" created 9 October 2014, ASX Release "Nicanda Hill Maiden Jorc Resource – 1.457 Billion Tonnes At 10.7%TGC And 0.27% V<sub>2</sub>O<sub>5</sub>", created 21 October 2014, ASX Release "Solid Drilling Results Continue At Nicanda Hill" dated 30 October 2014, ASX Release "Nicanda Hill Scoping Study", dated 26 November 2014, ASX Release "Nicanda Hill Update", dated 28 November 2014, ASX Release "Triton Secures Two Billion Dollar (USD) 20 Year Binding Off-Take Contract", dated 1 April 2015, ASX Release "Mozambique Projects Update", dated 13 July 2015, ASX Release "Mozambique and Chinese Projects Update", dated 14 August 2015, ASX Release "Battery Grade Spherical Graphite Produced", dated 20 August 2015, ASX Release "TMG Produces Graphene", dated 11 September 2015, ASX Release "Triton Mozambique Development Strategy" dated 14 September 2015, ASX Release "Successful Commercial Manufacture of Enhanced Graphite Products using TMG Concentrate", dated 7 October 2015, ASX Release "Positive Metallurgical Results For P66 (Nicanda Hill) and Ancuabe", dated 14 October 2015 and is available to view on [www.tritonmineralsltd.com.au](http://www.tritonmineralsltd.com.au). The reports were issued in accordance with the 2012 Edition of the JORC Australasian Code for Reporting of Exploration Results, Mineral Resources and Ore Reserves. The Company confirms that it is not aware of any new information or data that materially affects the information included in the original market announcement and, in the case of estimates of Mineral Resources that all material assumptions and technical parameters underpinning the estimates in the relevant market announcement continue to apply and have not materially changed. The Company confirms that the form and context in which the Competent Person's findings are presented have not been materially modified from the original market announcement.

The information in this presentation that relates to Exploration Results on Ancuabe project is extracted from the reports entitled ASX Release "High Grade Large Flake Graphite Identified at Ancuabe Project" dated 31 October 2013, ASX Release "Mozambique Projects Update", dated 4 February 2015 and 26 February 2015, ASX Release "Mozambique Projects Update", dated 2 April 2015, ASX Release "Extraordinary Metallurgical Results - Ancuabe Project", dated 29 April 2015, ASX Release "Substantial Graphitic Mineralisation confirmed at Ancuabe", dated 18 September 2015 and is available to view on [www.tritonmineralsltd.com.au](http://www.tritonmineralsltd.com.au). The reports were issued in accordance with the 2012 Edition of the JORC Australasian Code for Reporting of Exploration Results, Mineral Resources and Ore Reserves. The Company confirms that it is not aware of any new information or data that materially affects the information included in the original market announcement and, in the case of estimates of Mineral Resources, that all material assumptions and technical parameters underpinning the estimates in the relevant market announcement continue to apply and have not materially changed. The Company confirms that the form and context in which the Competent Person's findings are presented have not been materially modified from the original market announcement.

### Forward-Looking Statements

This document may include forward-looking statements. Forward-looking statements include, but are not necessarily limited to, statements concerning Triton Minerals Limited's planned exploration program and other statements that are not historic facts. When used in this document, the words such as "could", "plan", "estimate" "expect", "intend", "may", "potential", "should" and similar expressions are forward-looking statements. Although Triton Minerals Limited believes that its expectations reflected in these are reasonable, such statements involve risks and uncertainties, and no assurance can be given that actual results will be consistent with these forward-looking statements.

# Triton Minerals Ltd

## Board and Management

---

### Board of Directors

<b>Chris Catlow</b> <i>Non Executive Chairman</i>	B.Sc. Eng, F.ICC; Strong corporate finance background with 25 years experience in international resource industry
<b>Alfred Gillman</b> <i>Executive (Technical) Director</i>	B.Sc (Hon), F.Aus.IMM (CP) 35 years of international experience in the mineral resources industry with specialization in exploration, resource estimation, project management
<b>Alan Jenks</b> <i>Non Executive Director</i>	20 Years experience in resource sector analysis and investment. Instrumental in establishing large group of UK-based investors for Triton.
<b>Paula Ferreira</b> <i>Non Executive Director</i>	Mozambique citizen and Chartered Accountant certified by Ordem dos Contabilistas e Auditores do Mocambique (OCAM) with 44 years experience in the Mozambique business community

---

### Executive Management

<b>Garth Higgo</b> <i>Chief Executive Officer</i>	B. Com (Hon), MBA, Dip.Civil Eng, GAICD: 35 year career spanning executive positions in engineering, construction services (mining and civil), banking, corporate finance, project development and mining operations
<b>Alfred Gillman</b>	Executive (Technical) Director

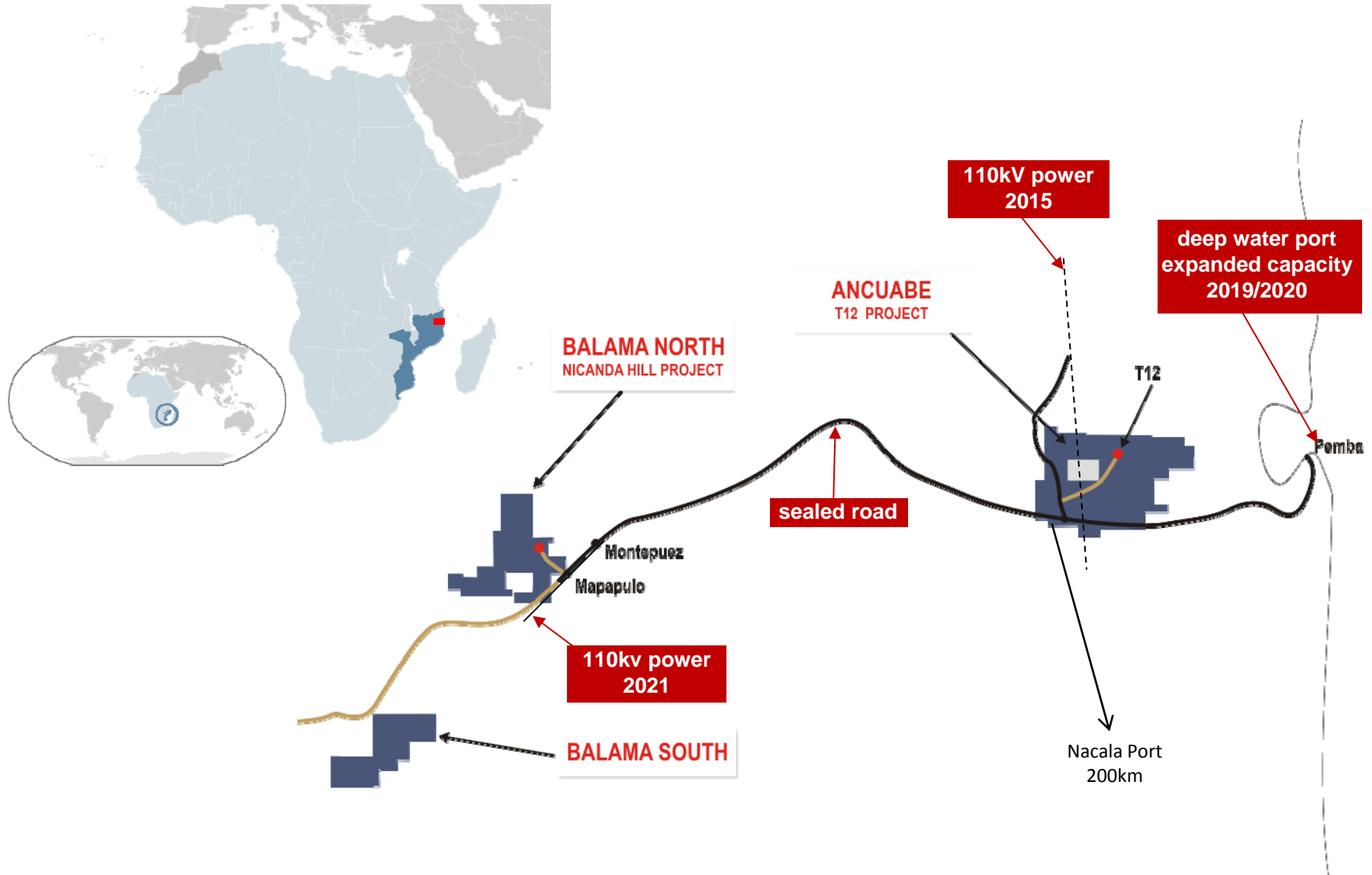
---

### Senior Management

<b>Gidiao Mbanze</b>	<b>Country Manager</b> (Mozambique); Bachelor of Aeronautical and Mechanical Engineering. 10 years of experience in Project Management Systems and Reliability engineering with some of the world's largest mining companies
<b>Chitti Irachi</b>	<b>Community Liaison Officer</b> (Mozambique)
<b>Nelson Matola</b>	<b>Country Logistics Manager</b> (Mozambique)

# Triton Minerals Ltd

## Location and Infrastructure Cabo Delgado Province, Mozambique



## Triton today ... KEY distinguishing elements

### **1 Two Flagship and World Class Projects in Mozambique**

Balama North 1.45Bt at 11.1%TGC - world's largest flake graphite deposit

Ancuabe Jumbo-dominant flake graphite deposit with untapped potential

**Economic Significance: Premium quality, long-term concentrate supply business**

### **2 100,000t (\$100M)/annum binding concentrate off take (YXGC – a user, not a broker)**

**Economic Significance: Underpins development of concentrate supply business**

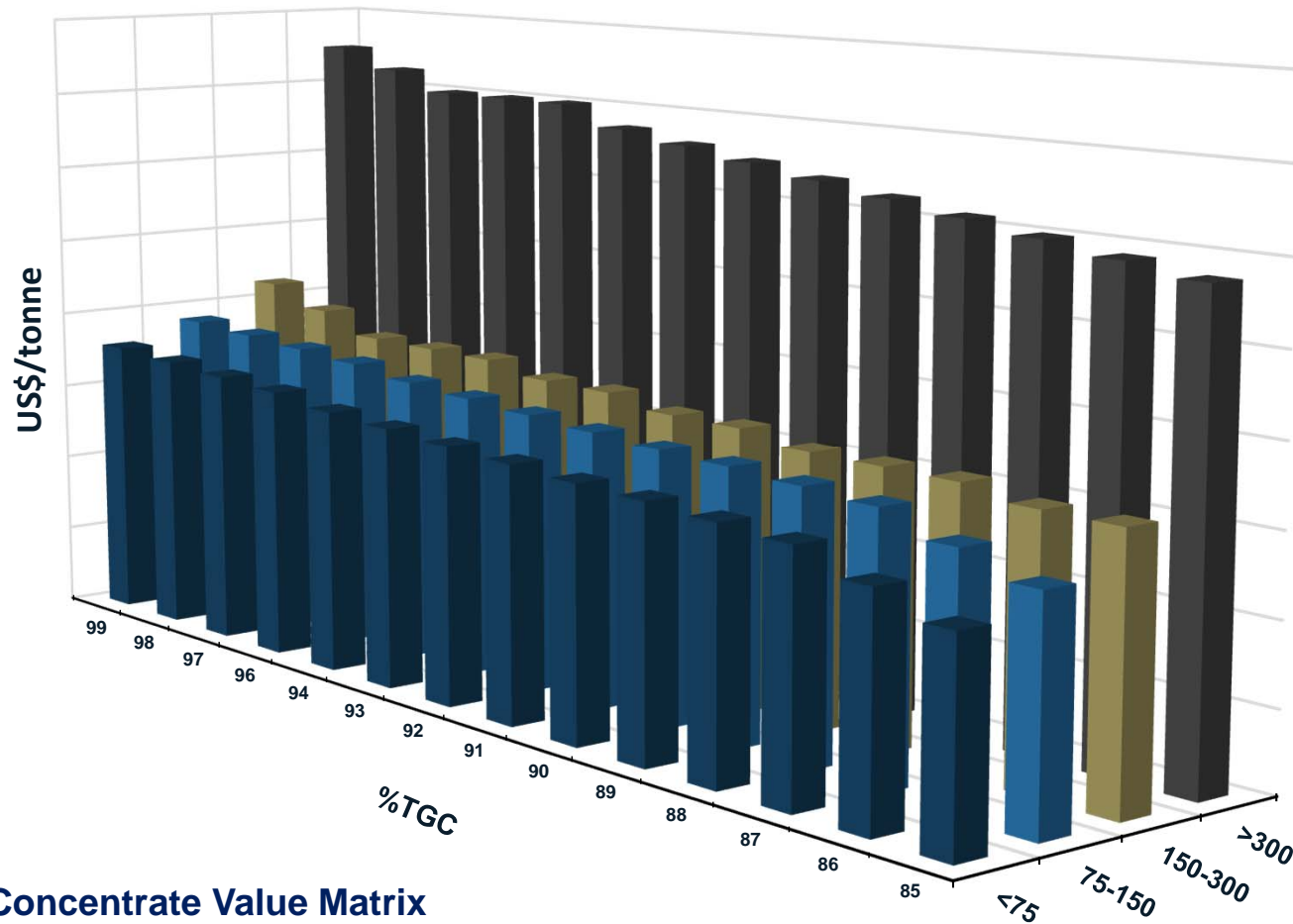
### **3 Joint Venture Participation in advanced graphite materials manufacturing plant**

**Economic Significance: Ability to generate early cash flow with minimal CAPEX**



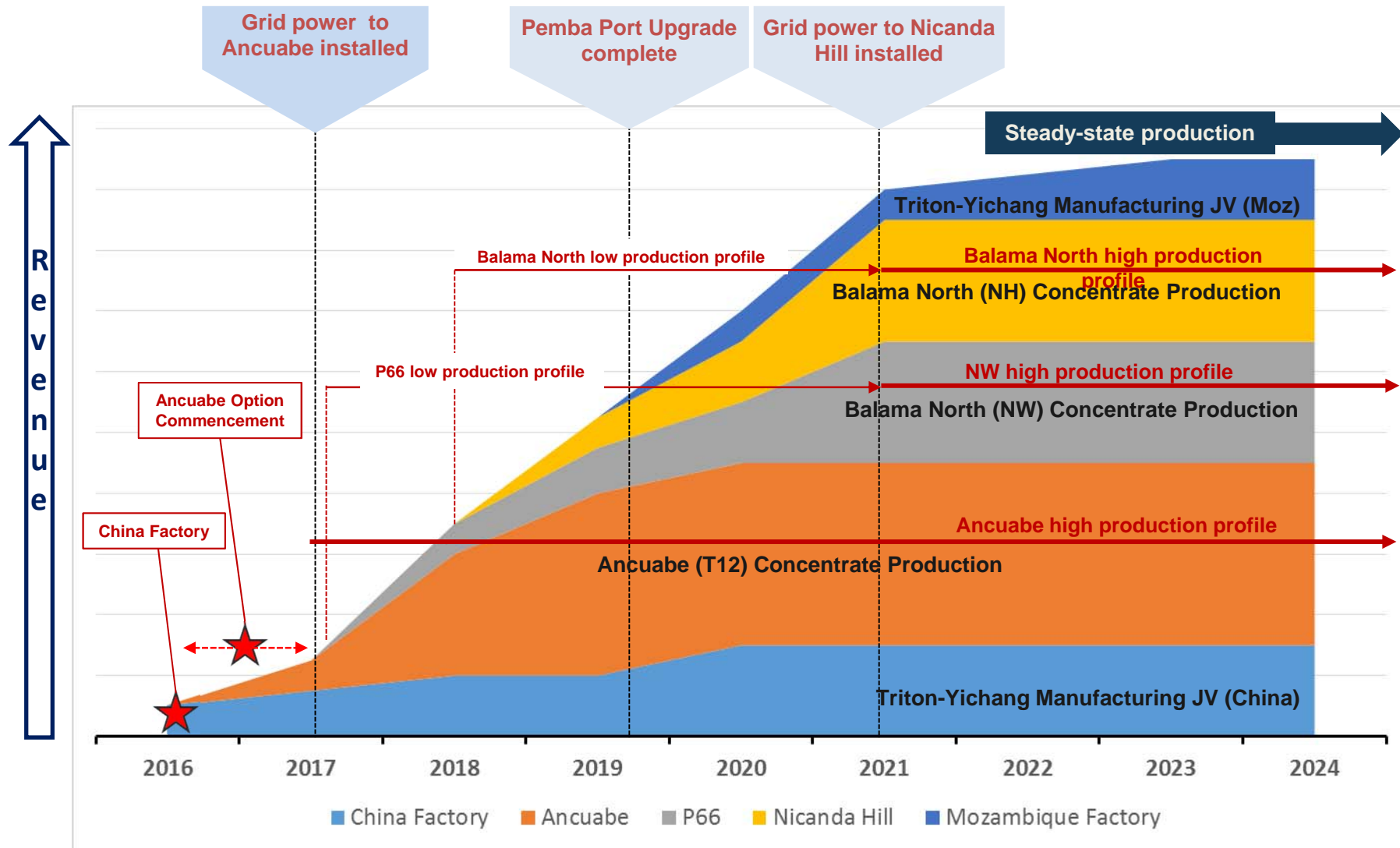
## Triton Mozambique Graphite

Provides for a full range of concentrate products to suit off take customers



Concentrate Value Matrix

## Targeted Relative Growth Profile





## Project Status

Project	Deposit	Recce	Exploration	Resource	Scoping Study	DFS
Balama North	Nicanda Hill					
Balama North	Nicanda West				→	
Ancuabe	T12					
Ancuabe	T16					
Balama South						

# Triton Minerals Ltd

## Nicanda Hill Resource

Classification	Tonnes	Grade	Contained Graphite	Grade	Contained V <sub>2</sub> O <sub>5</sub>
	(Mt)	(TGC%)	(Mt)	(V <sub>2</sub> O <sub>5</sub> %)	(Mt)
Measured	33	12.34	4.06	0.34	0.11
Indicated	375	11.08	41.51	0.29	1.10
Inferred	1,036	11.08	114.75	0.29	3.01
<b>Total</b>	<b>1,443</b>	<b>11.11</b>	<b>160.32</b>	<b>0.29</b>	<b>4.22</b>

**Table 1:** Nicanda Hill October 2015 Mineral Resource Estimate Table (reported using 5%TGC cut-off grade)

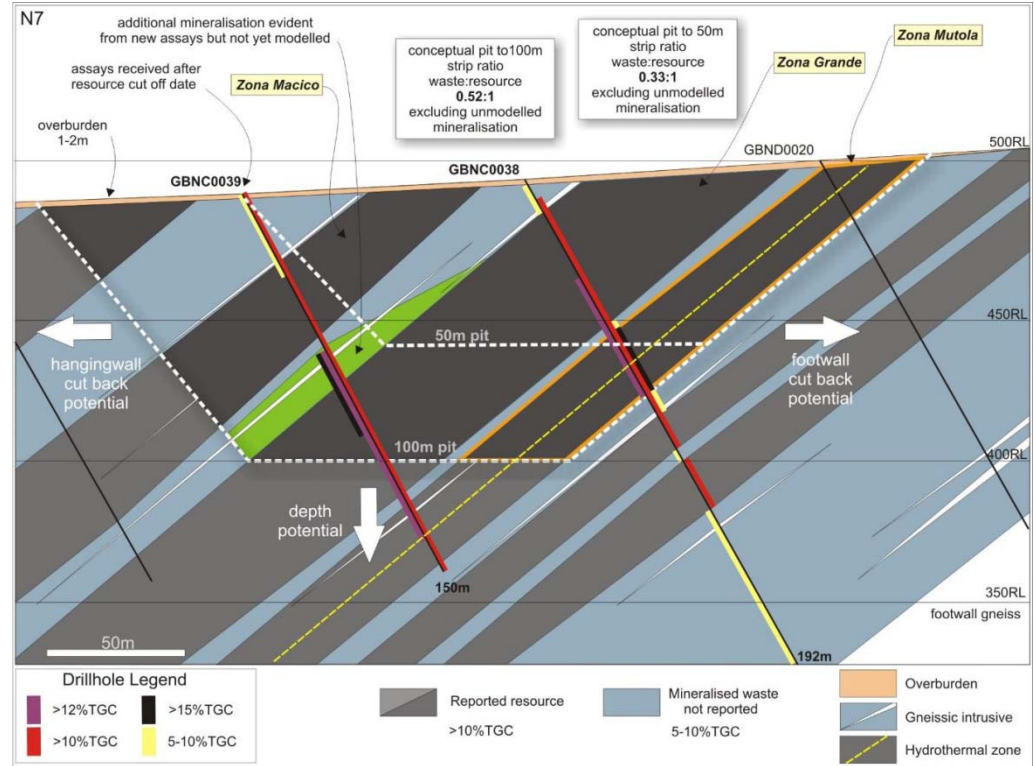
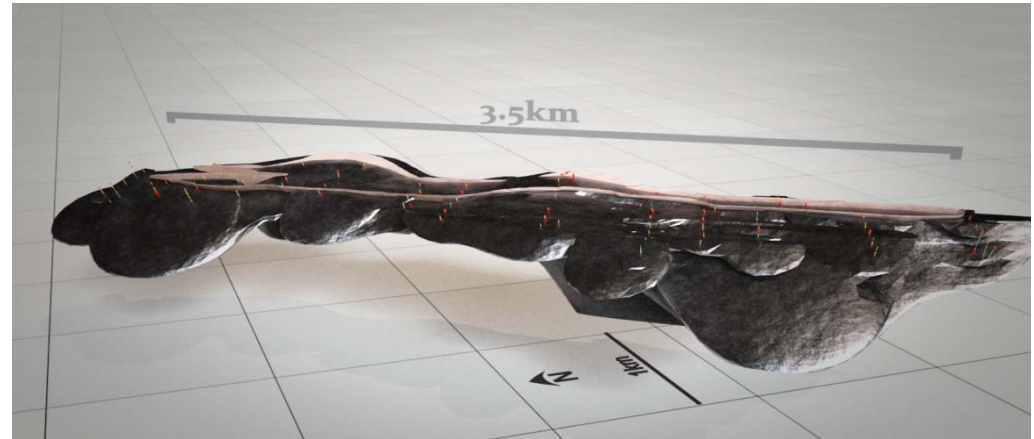
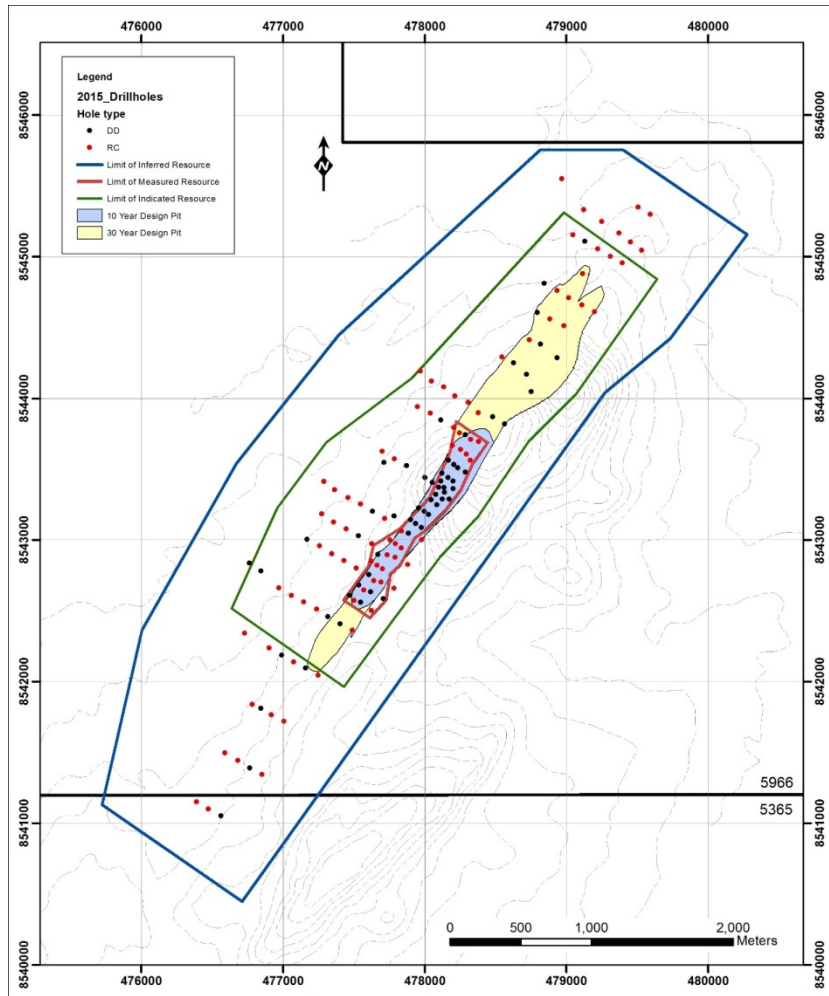
Cut Off	Measured			Indicated			Inferred		
TGC %	M Tonnes	TGC%	V <sub>2</sub> O <sub>5</sub> %	M Tonnes	TGC%	V <sub>2</sub> O <sub>5</sub> %	M Tonnes	TGC%	V <sub>2</sub> O <sub>5</sub> %
5	32.9	12.3	0.34	374.6	11.1	0.29	1,036	11.1	0.29
10	29.8	12.6	0.35	303.6	11.4	0.31	809	11.5	0.31
12.5	15.7	14.0	0.38	49.7	13.6	0.37	151	13.8	0.38
15	2.5	15.7	0.38	5.6	15.8	0.40	24	16.0	0.43

**Table 2.** Nicanda Hill deposit and details of the graphite tonnage in the Measured, Indicated and Inferred classifications at various cut off grades (numbers rounded to significant figures)

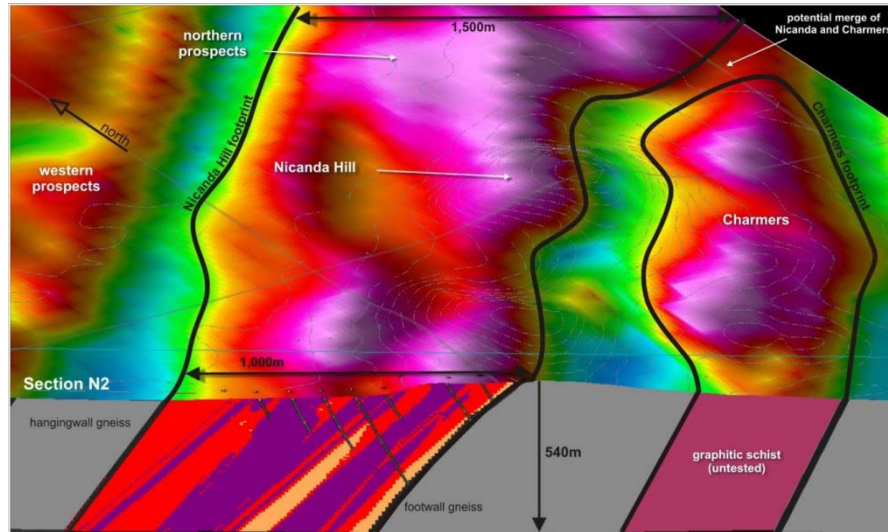
### Competent Person's Statement

The information in this report that relates to the Mineral Resource estimate at Nicanda Hill is based on, and fairly represents, information which has been compiled by Mr James Ridley. Mr Ridley is a Principal Geologist at Jorvik Resources Pty Ltd, who is an independent consultant to the Company and a Member of the Australasian Institute of Mining and Metallurgy. Mr Ridley has sufficient experience that is relevant to the style of mineralisation and type of deposit under consideration and to the activity that is being undertaken to qualify as Competent Person as defined in the 2012 Edition of the 'Australasian Code for Reporting of Exploration Results, Mineral Resources and Ore Reserves'. Mr Ridley consents to the inclusion in this report of the matters based on his information in the form and context in which they appear.

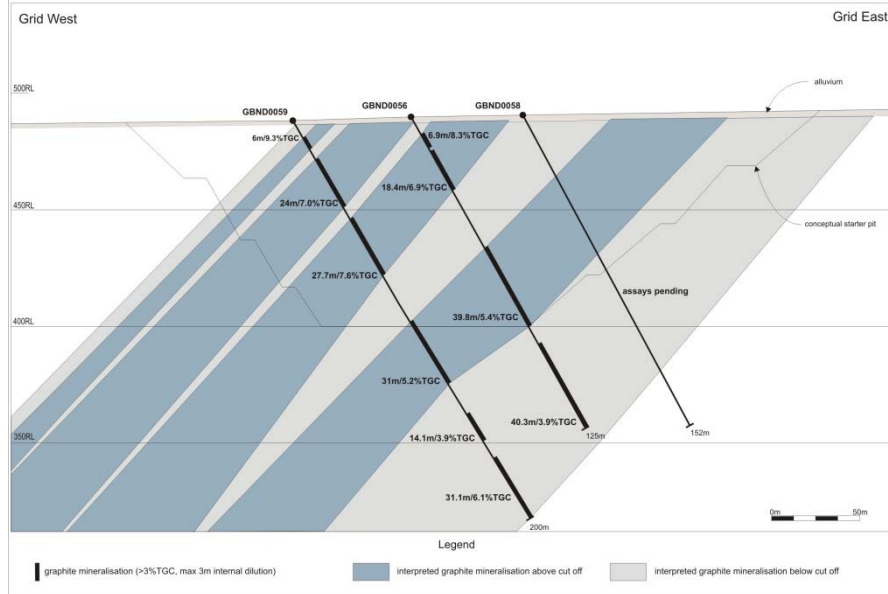
## Nicanda Hill Resource



## Nicanda West

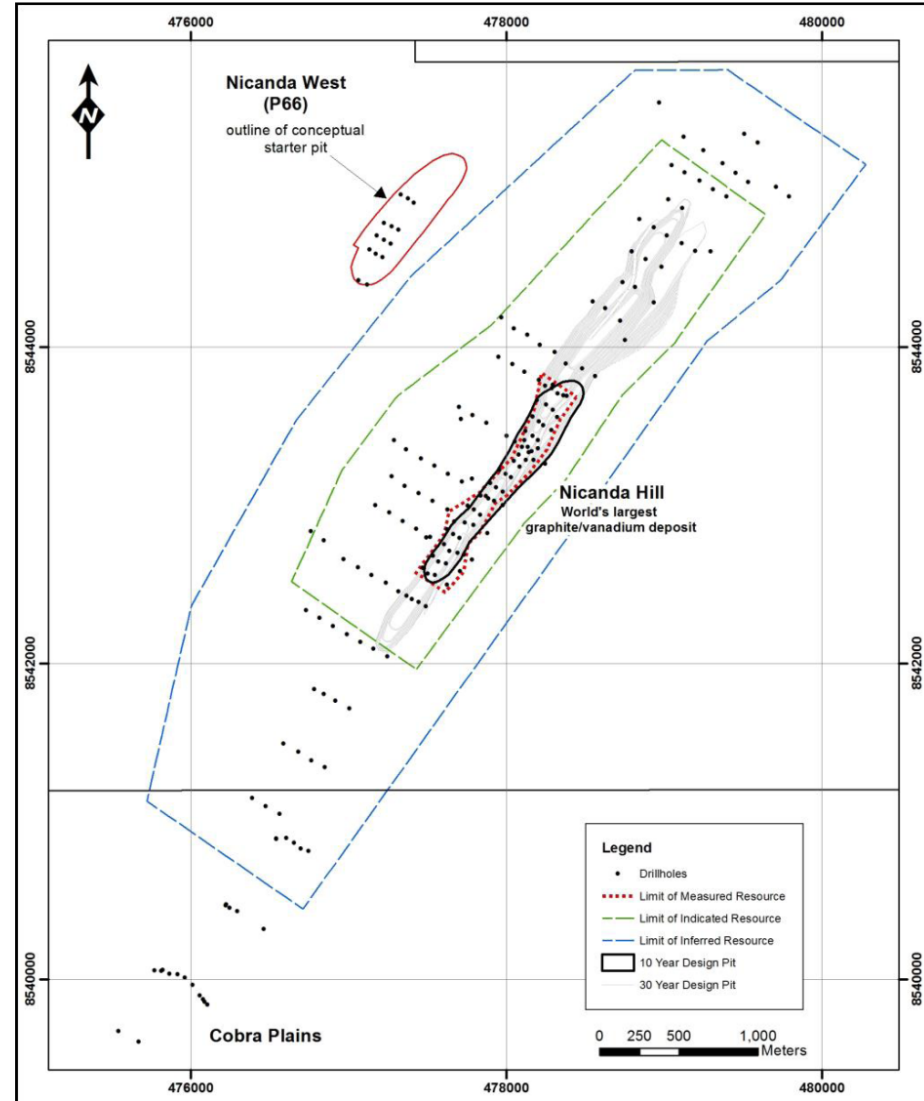


Geophysical Targeting Model



Legend

graphite mineralisation (>3%TGC, max 3m internal dilution) | interpreted graphite mineralisation above cut off | interpreted graphite mineralisation below cut off



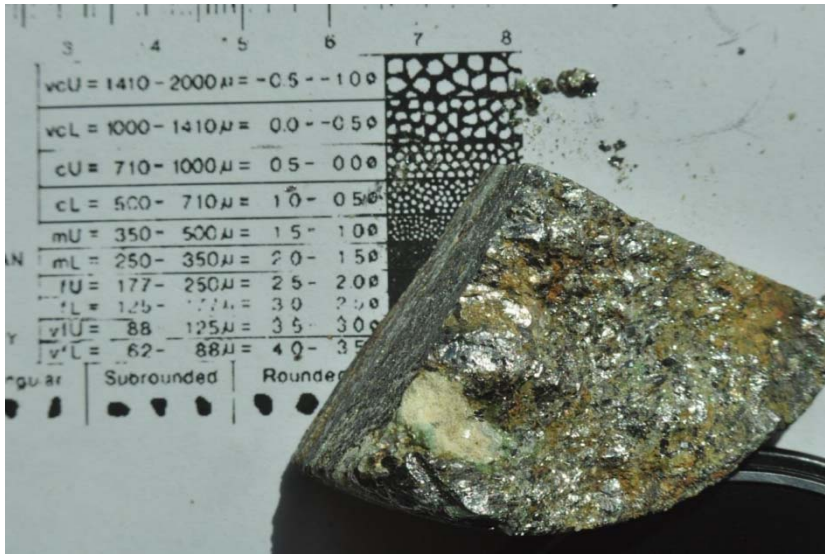
**Legend**

- Drillholes
- Limit of Measured Resource
- - - - Limit of Indicated Resource
- - - - Limit of Inferred Resource
- ▭ 10 Year Design Pit
- ▭ 30 Year Design Pit

0 250 500 1,000 Meters

# Triton Minerals Ltd

## Nicanda West



Flake Size		Nicanda West standard	Nicanda West hi-spec
Mesh	Micron	Mass %	Mass %
50	>300	12.6	6.7
-50 to 100	150-300	40.2	37.1
<b>Total</b>	<b>&gt;150</b>	<b>52.8</b>	<b>43.8</b>
100 to -200	75-150	25.0	30.2
200	<75	22.2	26.0
<b>Total</b>	<b>&lt;150</b>	<b>47.2</b>	<b>56.2</b>
Recovery		97.4	96
Grade		<b>96.1</b>	<b>97.7</b>

## Definitive Feasibility Study

Commenced on Nicanda Hill

Nominal 100,000t/annum Phase 1

Binding off take for 100,000t/annum with  
Yichang Xincheng Graphite Co. Ltd (YXGC)

Expanded DFS to incorporate Nicanda West

### DRA Global

- Flotation test work (SGS)
- Flowsheet
- Design
- Enquiry documents (OPEX/CAPEX)

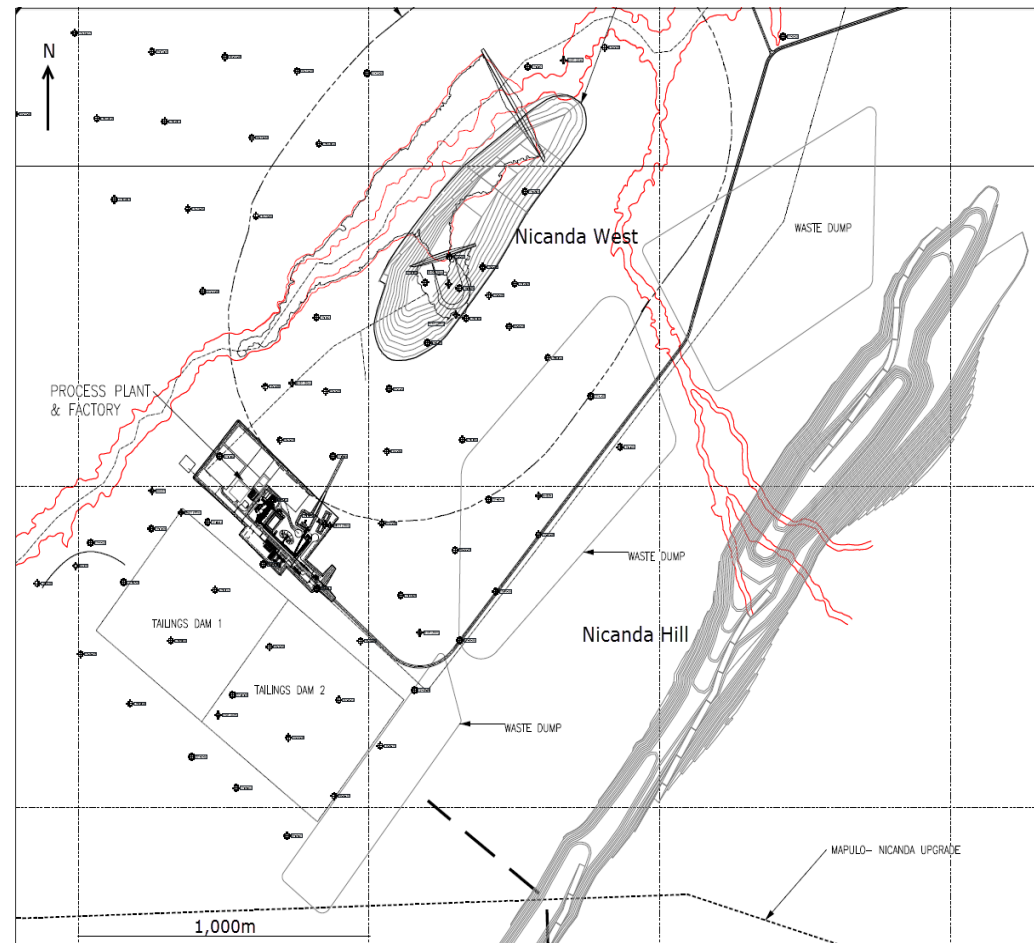
### Golders

- Tailings Storage Facility (TSF)
- Hydrology
- Plant site geotech
- Open pit geotech

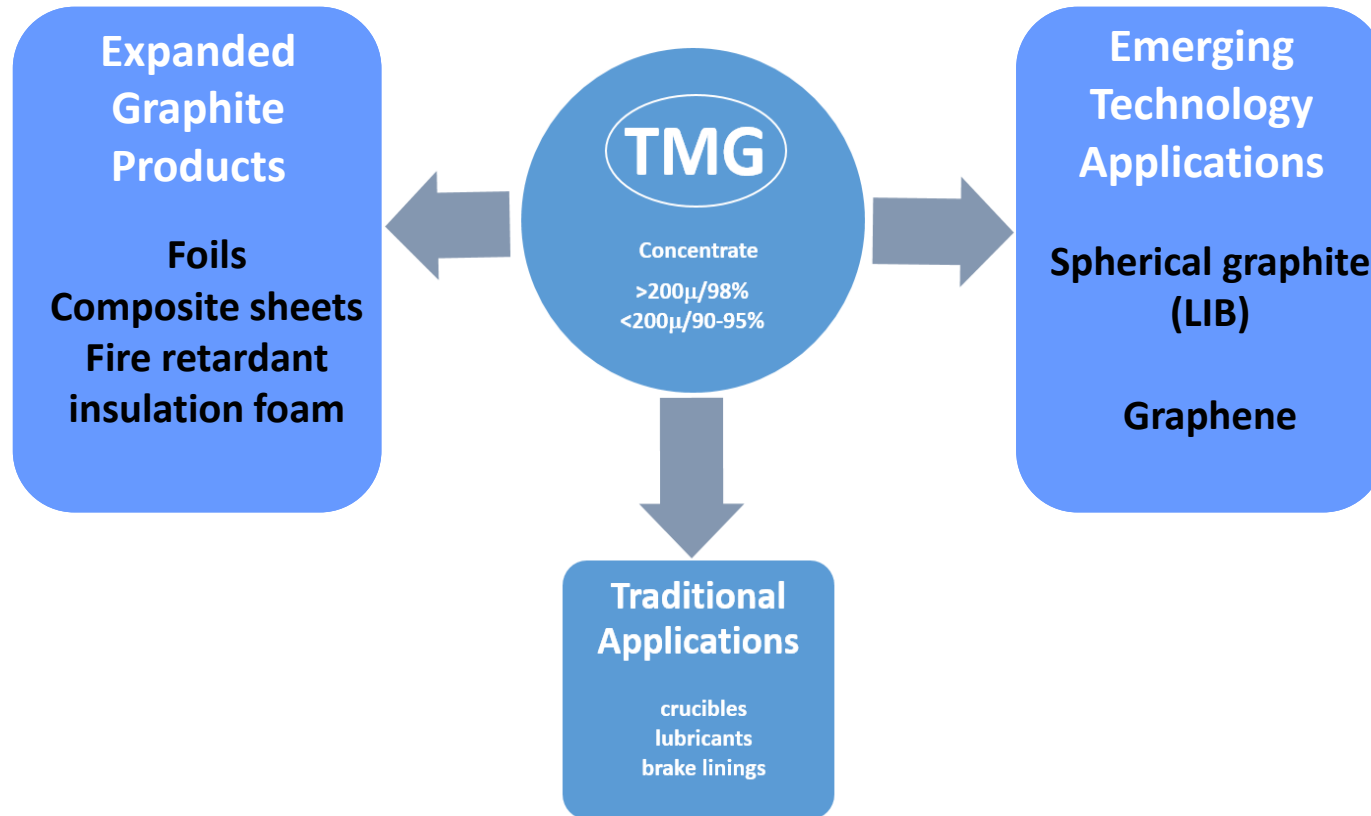
### Environmental and Social Impact Study

#### C&E EOH

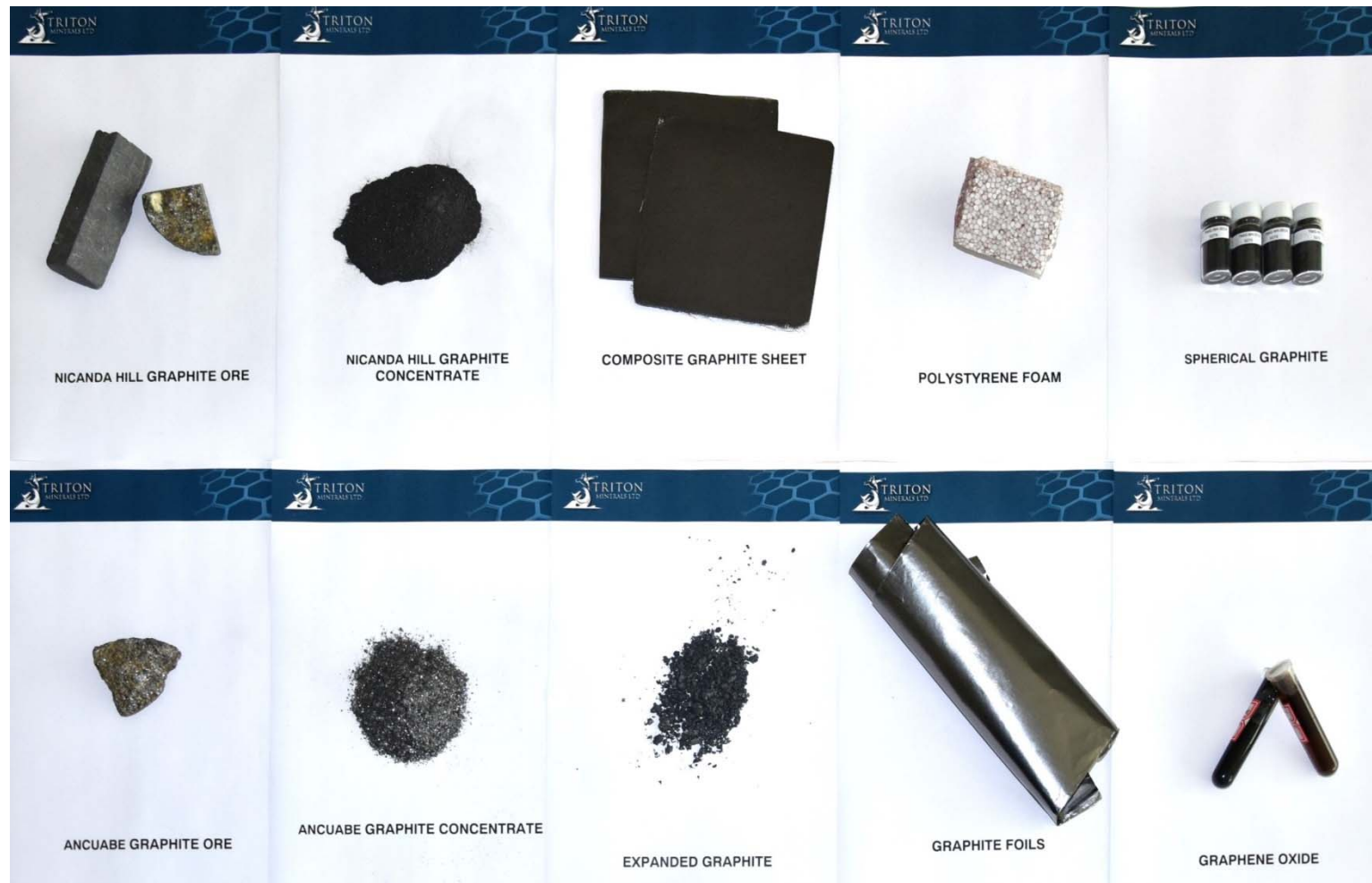
- Wet/Dry Season studies complete
- Community engagement complete
- Final Environmental Pre Viability Report and  
Scope Definition (EPDA) submitted



**Targeted Applications  
for Nicanda Graphite**



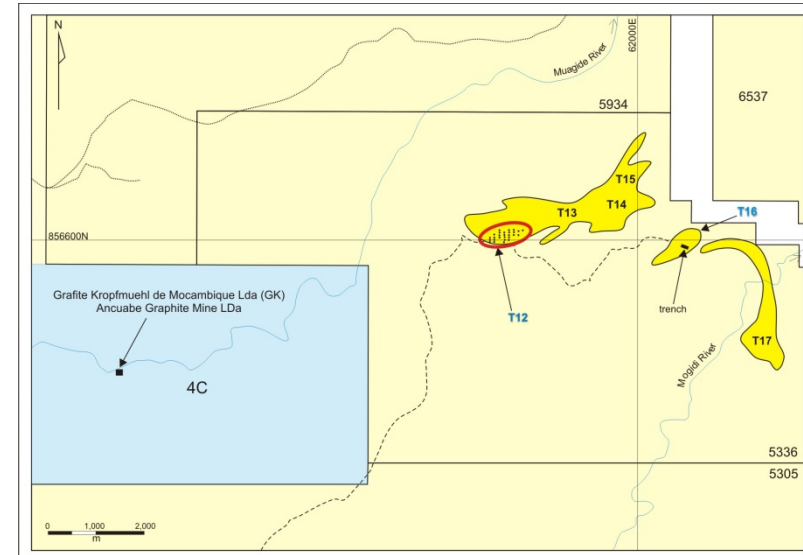
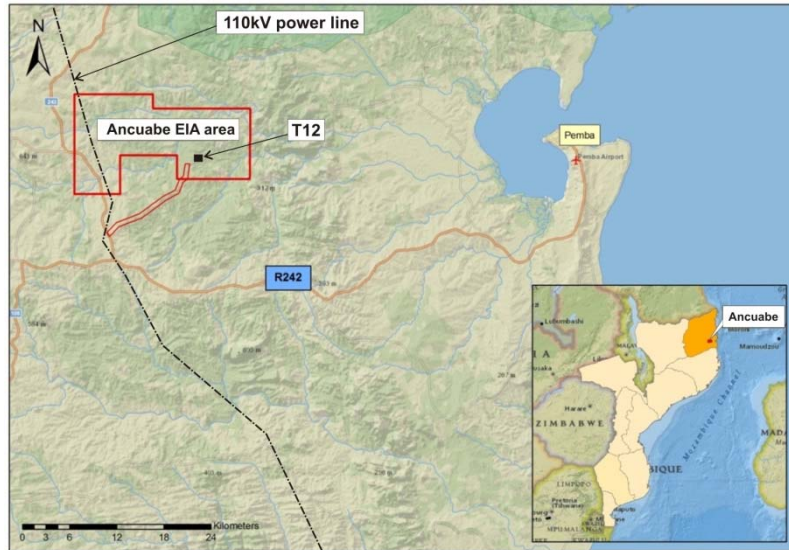
## Successful production of Value-added Materials using TMG



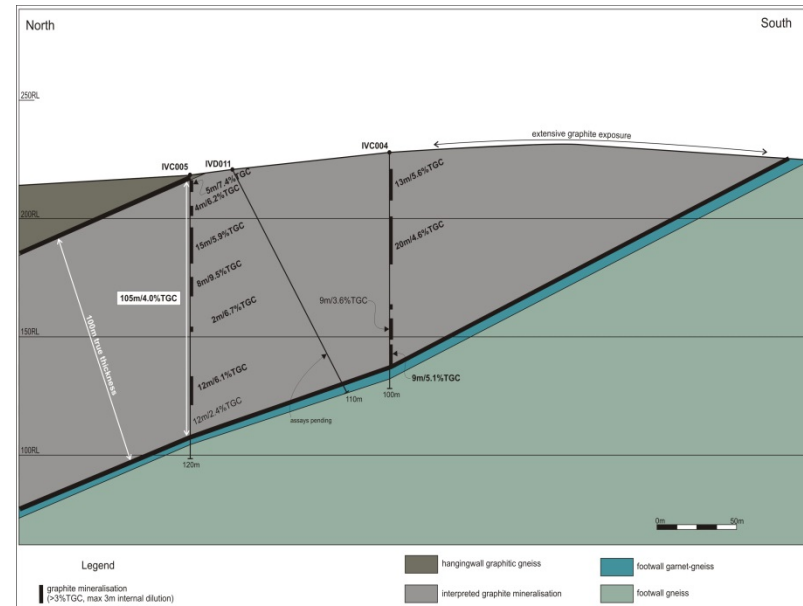


**Ancuabe**

## Ancuabe

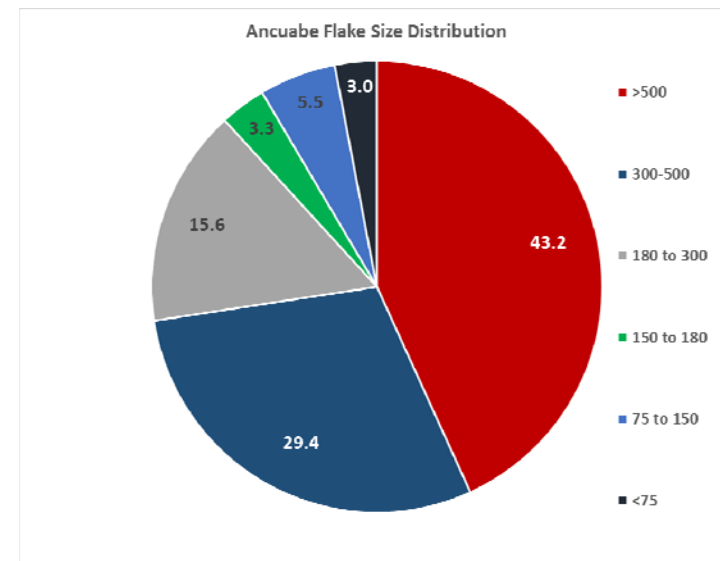
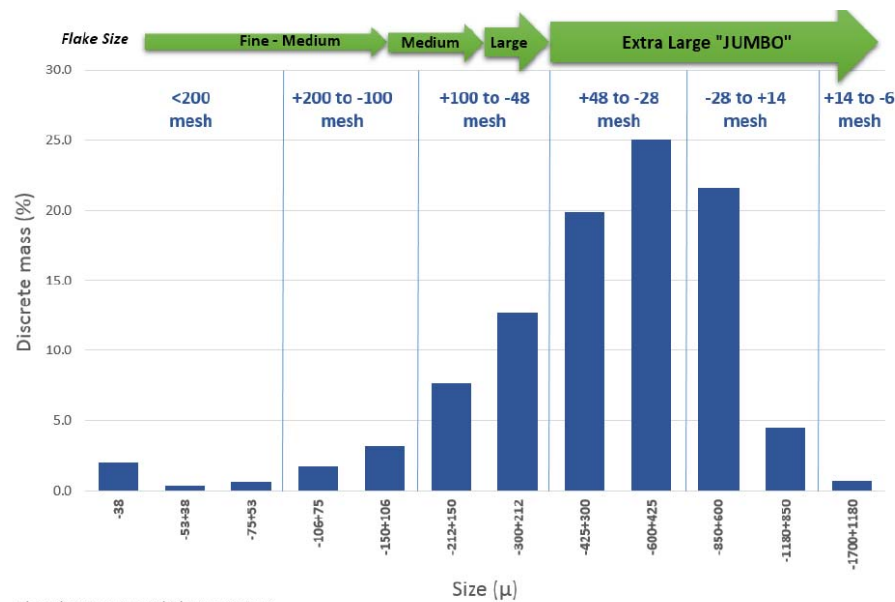


Regional VTEM completed Oct 2014  
 Drilling commenced June 2015  
 T12 discovery – August 2015  
 T16 discovery – October 2015  
 Initial resource estimate Q1-2016

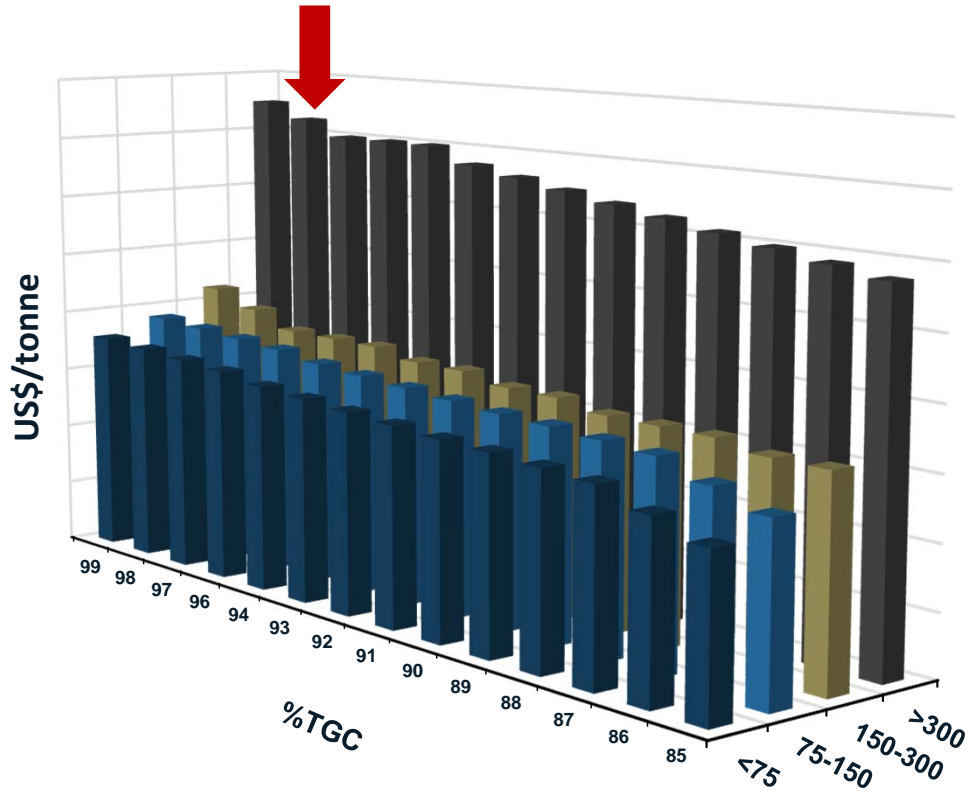


## Encouraging Flotation Results

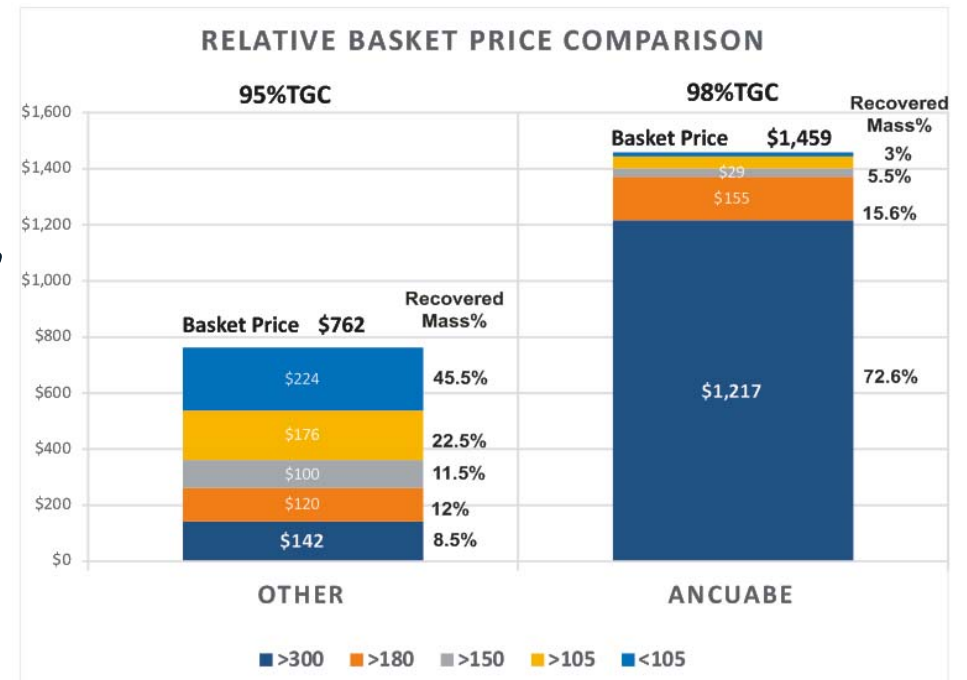
	Flake Size		Ancuabe Standard	Ancuabe Battery-spec
	Mesh	Micron	Mass %	Mass %
<b>Super Jumbo</b>	35	>500	43.2	42.6
<b>Jumbo</b>	-35 to +48	300-500	29.4	30.3
<b>Large</b>	-48 to +80	180 to 300	15.6	13.8
<b>Medium</b>	-80 to +100	150 to 180	3.3	2.5
	<b>Total</b>	<b>&gt;150</b>	<b>91.5</b>	<b>89.2</b>
<b>Fine</b>	-100 to +200	75 to 150	5.5	8.2
<b>Very Fine</b>	-200	<75	3.0	2.6
	<b>Total</b>	<b>&lt;150</b>	<b>8.5</b>	<b>10.8</b>
<b>Recovery</b>			95.8	92.0
<b>Concentrate Grade</b>			<b>97.8</b>	<b>98.2</b>



## Ancuabe



**Ancuabe graphite positioned to attract highest possible basket prices**



## Triton today ... KEY distinguishing elements

### **1 Two Flagship and World Class Projects in Mozambique**

Balama North 1.45Bt at 11.1%TGC - world's largest flake graphite deposit

Ancuabe Jumbo-dominant flake graphite deposit with untapped potential

**Economic Significance: Premium quality, long-term concentrate supply business**

### **2 100,000t (\$100M)/annum binding concentrate off take (YXGC – a user, not a broker)**

**Economic Significance: Underpins development of concentrate supply business**

### **3 Joint Venture Participation in advanced graphite materials manufacturing plant**

**Economic Significance: Ability to generate early cash flow with minimal CAPEX**

Thank you

