

Discovering new mineral systems in Western NSW

Annual General Meeting Presentation, 27 November 2013

The information contained in this presentation has been prepared by Thomson Resources Limited (TMZ).

This presentation and the information contained in this notice is not a recommendation, offer or invitation by any person to sell or apply for securities in TMZ in any jurisdiction and none of this presentation document or its contents shall form the basis of any contract or commitment.

This presentation is not a disclosure document under Australian law or under any other law. It is for information purposes only. Accordingly, this presentation document neither purports to be exhaustive nor contain all of the information which a prospective investor or you may require to make an investment decision and it does not contain all of the information which would otherwise be required by Australian law or any other law to be disclosed in a prospectus. Any invitation or offer to apply, buy or subscribe for securities in TMZ will only be made or extended through a disclosure document lodged with the Australian Securities and Investments Commission in the event that any such invitation or offer proceeds.

This presentation has been prepared in good faith, but no representation or warranty, express or implied, is made as to the fairness, accuracy, completeness, correctness, reliability or adequacy of any statements, estimates, opinions or other information, or the reasonableness of any assumption or other statement, contained in the presentation (any of which may change without notice). To the maximum extent permitted by law, TMZ and its directors, officers, partners, employees, advisers and agents and any other person involved in the preparation of the presentation disclaim all liability and responsibility (including without limitation any liability arising from fault or negligence) for any direct or indirect loss or damage which may arise or be suffered through use or reliance on anything contained in, or omitted from, the presentation.

No representation or warranty, express or implied, is given as to the fairness, accuracy, completeness, likelihood of achievement or reasonableness of any forecasts, prospective statements or returns contained in the presentation. Such forecasts, prospective statement or returns are by their nature subject to significant uncertainties and contingencies. You should make your own independent assessment of the information and take your own independent professional advice in relation to the information and any action taken on the basis of the information.

Disclaimer

Any such forecast, prospective statement or return contained in the presentation has been based on current expectations about future events and is subject to risks, uncertainties and assumptions that could cause actual results to differ materially from the expectations described.

TMZ does not have any responsibility or obligation to inform you of any matter arising or coming to their notice, after the date of this presentation document, which may affect any matter referred to in the presentation. You must not rely on the presentation provided but make your own independent assessment of the presentation and seek and rely upon your own independent taxation, legal, financial or other professional advice in relation to the presentation. The presentation is not intended to constitute financial product advice and does not take into account your investment objectives, taxation situation, financial situation or needs.

The distribution of this presentation in other jurisdictions including (without limitation) the United States, Canada and Japan (or to any resident thereof) may be restricted by law and therefore persons into whose possession this presentation comes should inform themselves of and observe any such restrictions. Any failure to comply with these restrictions may constitute a violation of the securities laws of any such jurisdiction.

The Shares have not been, and will not be, registered under the US Securities Act or under any of the relevant securities laws of any state of the United States or of Canada or Japan. Accordingly, unless an exemption under such act or laws is applicable, TMZ Shares may not be offered, sold or delivered directly or indirectly in or into the United States, Canada or Japan.

Competent Person Statement

The information in this report that relates to Exploration Results, Mineral Resources or Ore Reserves is based on information compiled by Eoin Rothery, (MSc), who is a member of the Australian Institute of Geoscientists. Mr Rothery is a full time employee of Thomson Resources Ltd. Mr Rothery has sufficient experience which is relevant to the style of mineralisation and type of deposit under consideration and to the activity which he is undertaking to qualify as a Competent Person as defined in the 2004 Edition of the "Australasian Code for Reporting of Exploration Results, Mineral Resources and Ore Reserves". Mr Rothery consents to the inclusion in the report of the matters based on his information in the form and context in which it appears.

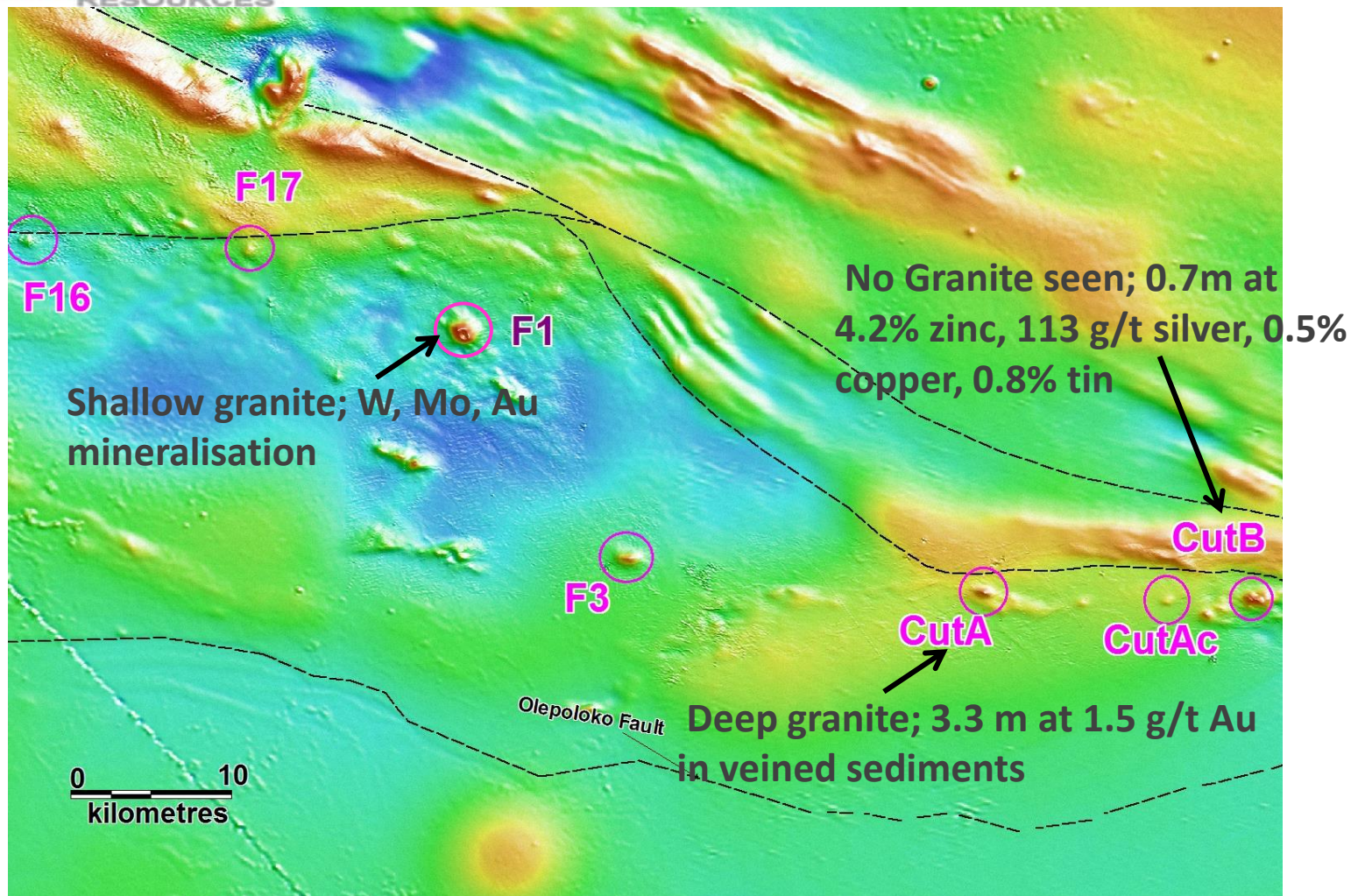


Prospect Review

- Intrusion Related Gold systems in the Thomson Fold Belt ★
- Tin – tungsten systems ★
- Cobar-type prospects ★
- Porphyry Cu-Au potential ★
- Volcanogenic Massive Sulphide (VMS) anomalies ★
- Orogenic Gold ★



Intrusion Related Gold Field – Thomson Fold Belt



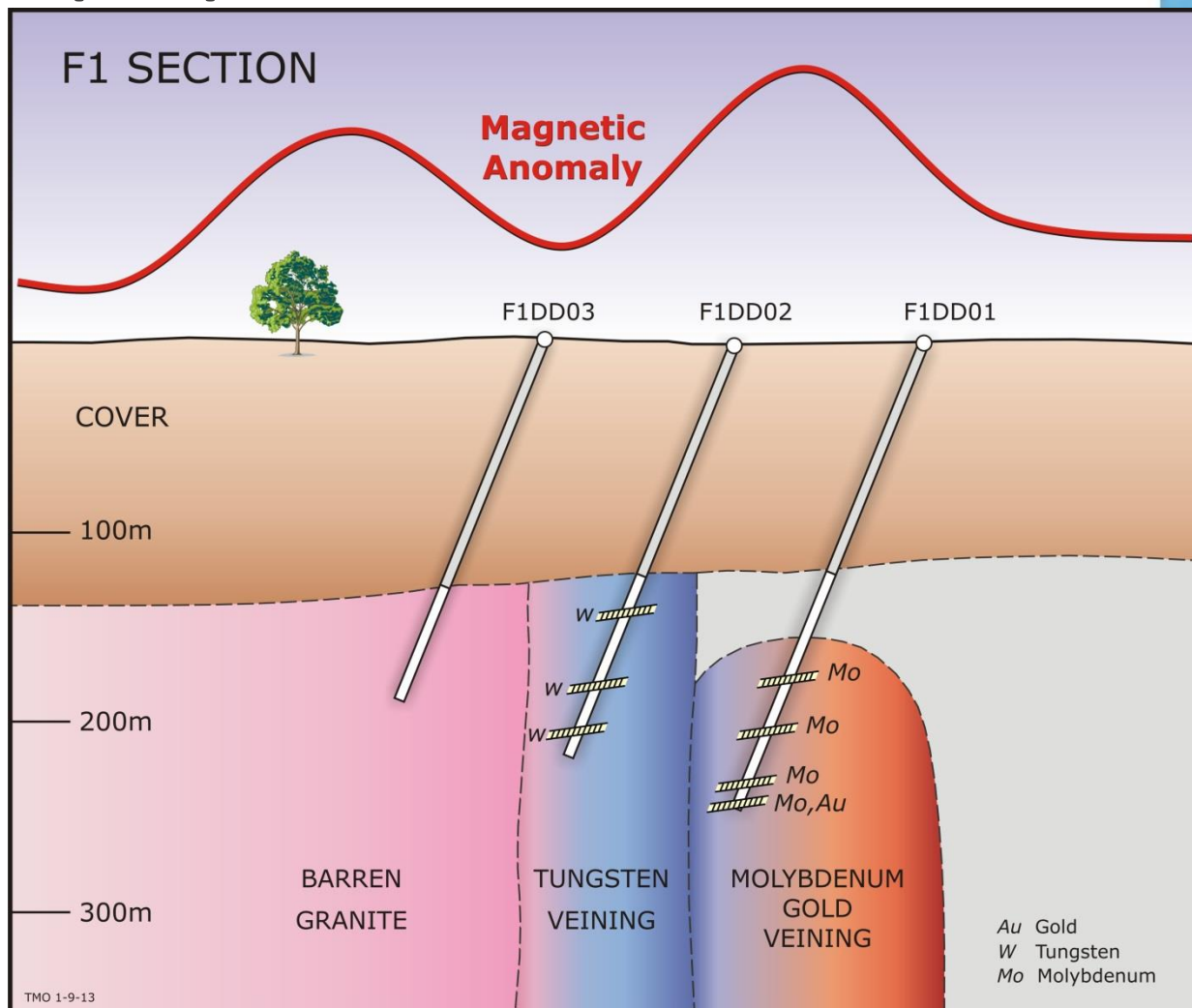
Intrusion Related Gold Systems discovered

- New IRG mineral field discovered – nine systems so far with just 16 drill holes
- All nine bulls-eye magnetic anomalies drilled are large, mineralised hydrothermal systems
- 14 mineralised holes – 2 barren; a very good strike rate
- High grades of up to 3.7 g/t gold, 4.2% zinc, 113 g/t silver, 0.5% copper, 0.8% tin, 0.6% tungsten, 0.9% lead, 0.2% molybdenum in initial drilling
- Targets identified for follow up drilling



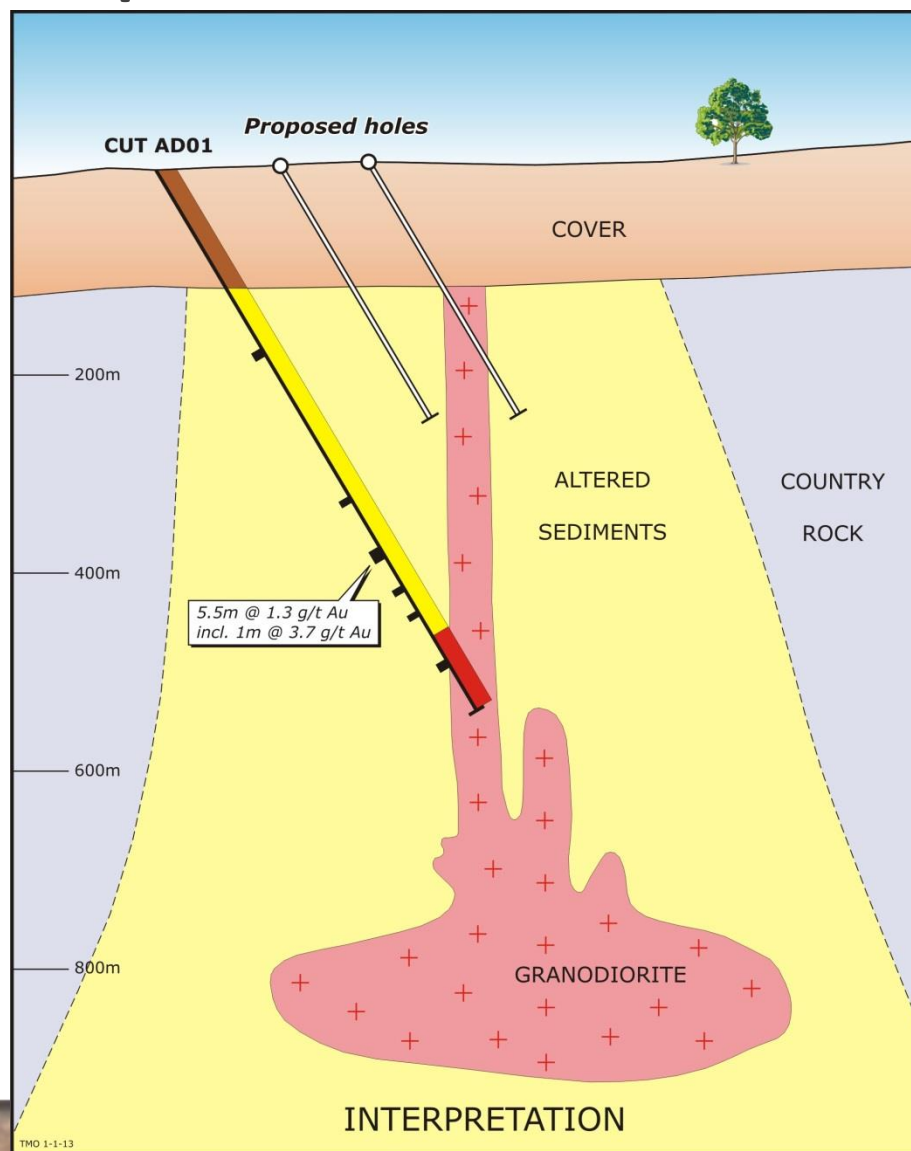
F1 prospect section

- Quartz-carbonate stacked vein systems in granite with pyrrhotite, pyrite, sphalerite and galena
- Spot highs over 1m –
 - Mo 0.2%,
 - W 0.3%,
 - Au 0.24 g/t,
 - Pb 0.1%, Zn 0.1%,
 - Ag 13 g/t, As 1%



Cut A prospect section

- Quartz-carbonate stacked vein system in altered sediments with pyrrhotite, pyrite, sphalerite and galena
- Spot highs –
 - Au 3.7 g/t,
 - Zn 1.8%,
 - Pb 1%,
 - Ag 58 g/t
 - Cu 0.2%





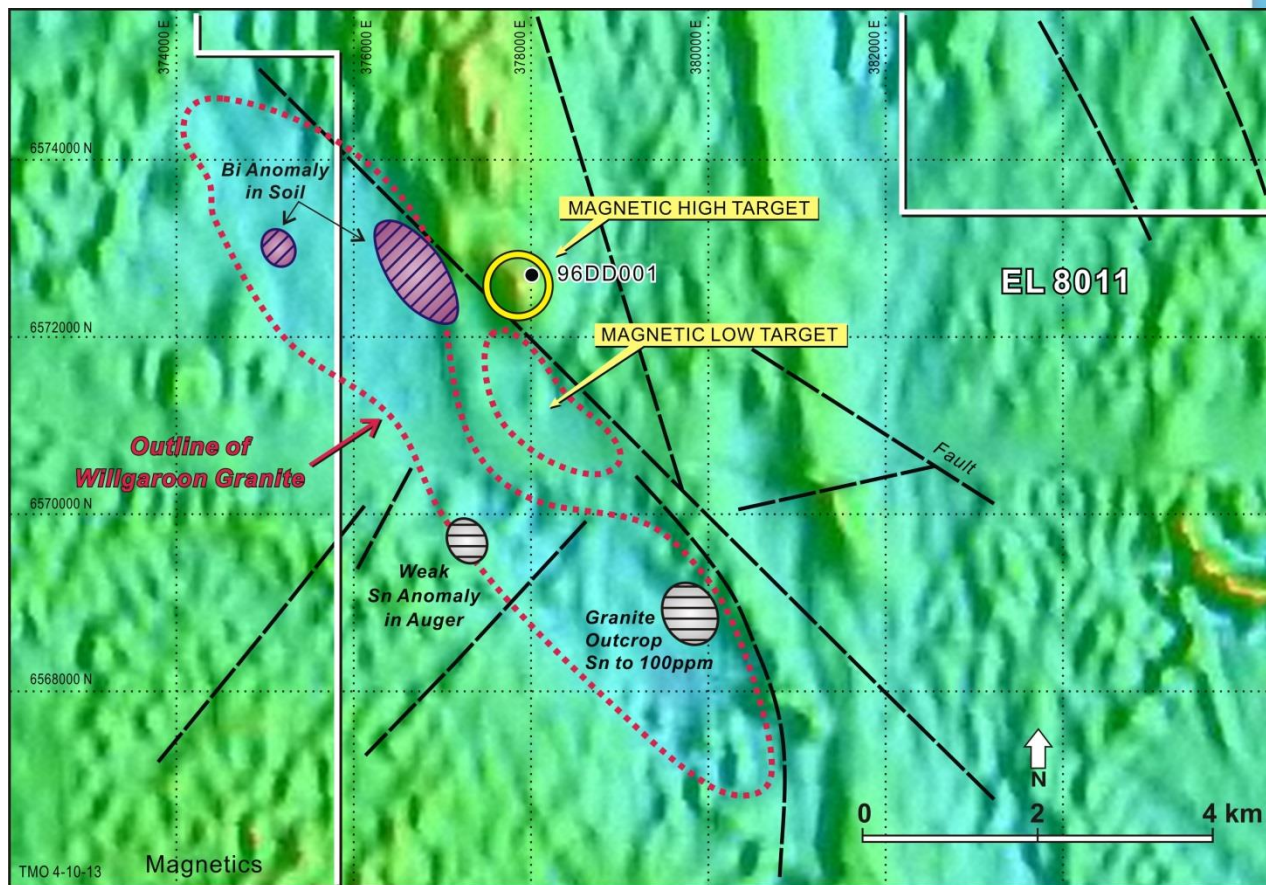
Prospect Review

- Intrusion Related Gold systems in the Thomson Fold Belt ★
- Tin – tungsten systems ★
- Cobar-type prospects ★
- Porphyry Cu-Au potential ★
- Volcanogenic Massive Sulphide (VMS) anomalies ★
- Orogenic Gold ★

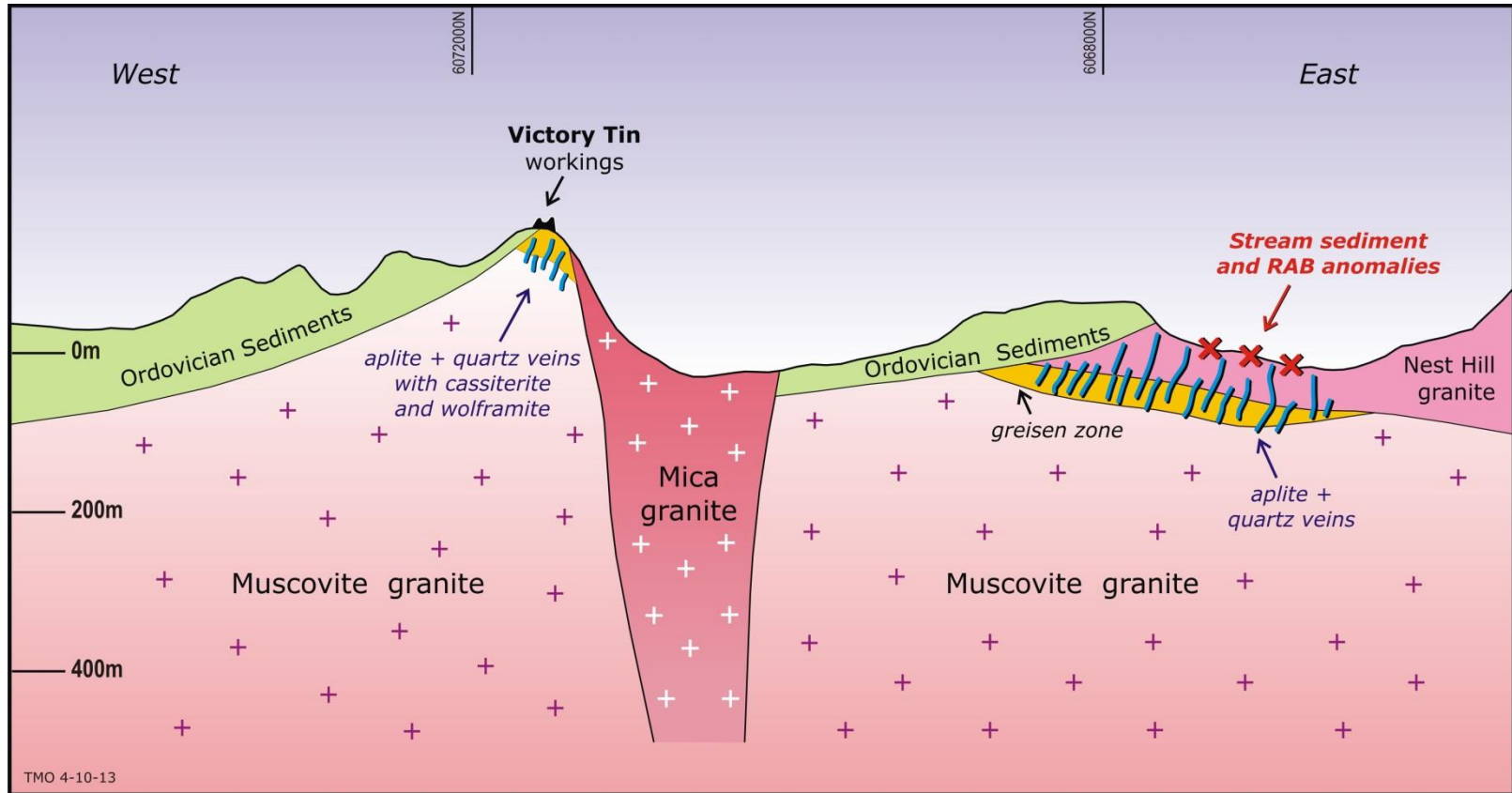


Tin Prospects - Wilgaroon

- Tin-anomalous I-type granite
- Northernmost intrusion of the Wagga Tin Belt
- One hole drilled to date – targeted magnetic anomaly outside granite
- To target granite itself – “roof” potential
- 250m Sn-W anomalism in sediments; up to 2.5% Sn, 1.4% W

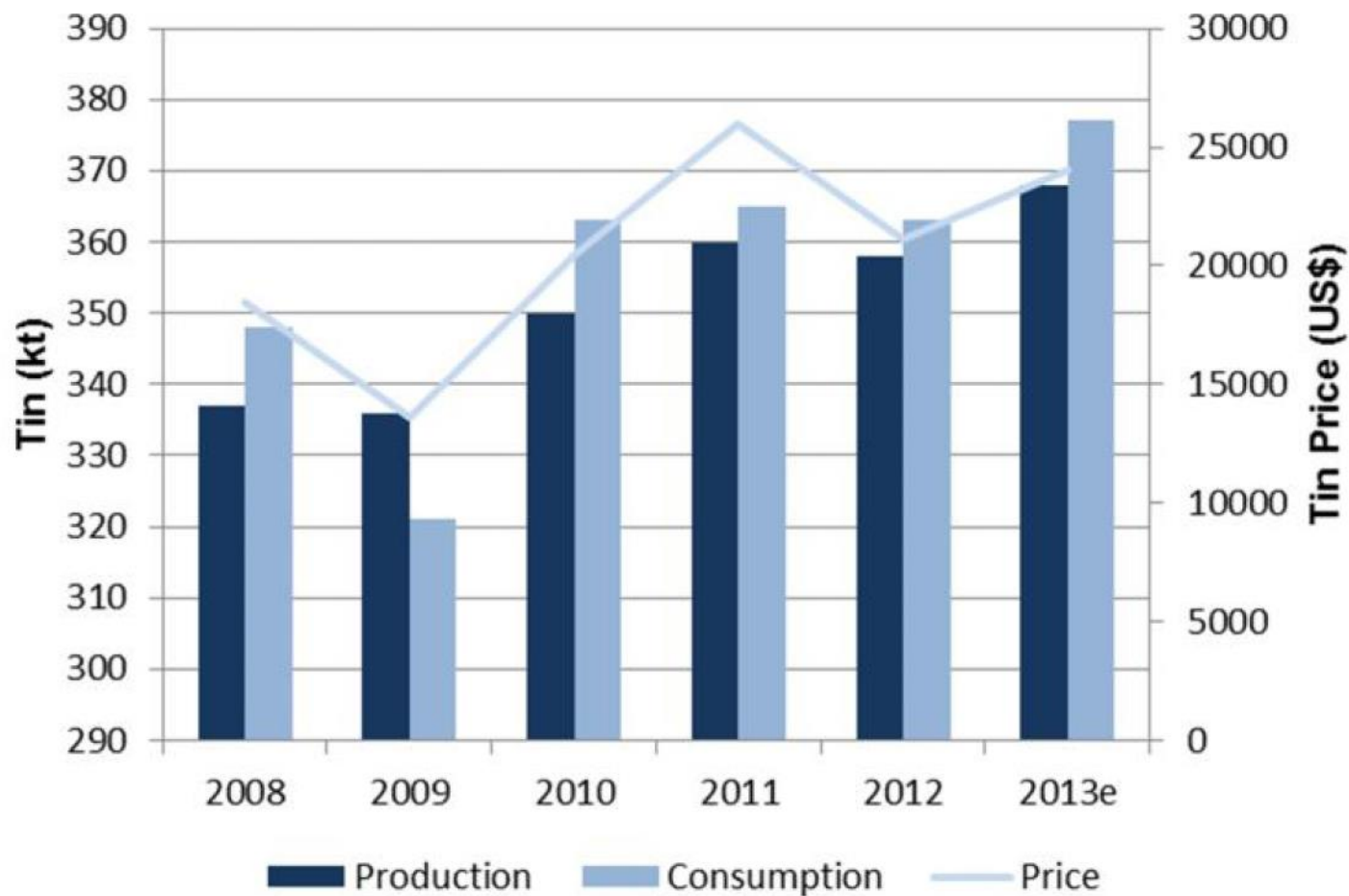


Tin Prospects – Victory Tin



- up to 3.4% Sn in stream sediments, draining potential “roof” target under Ordovician sediments

Tin Industry – positive outlook



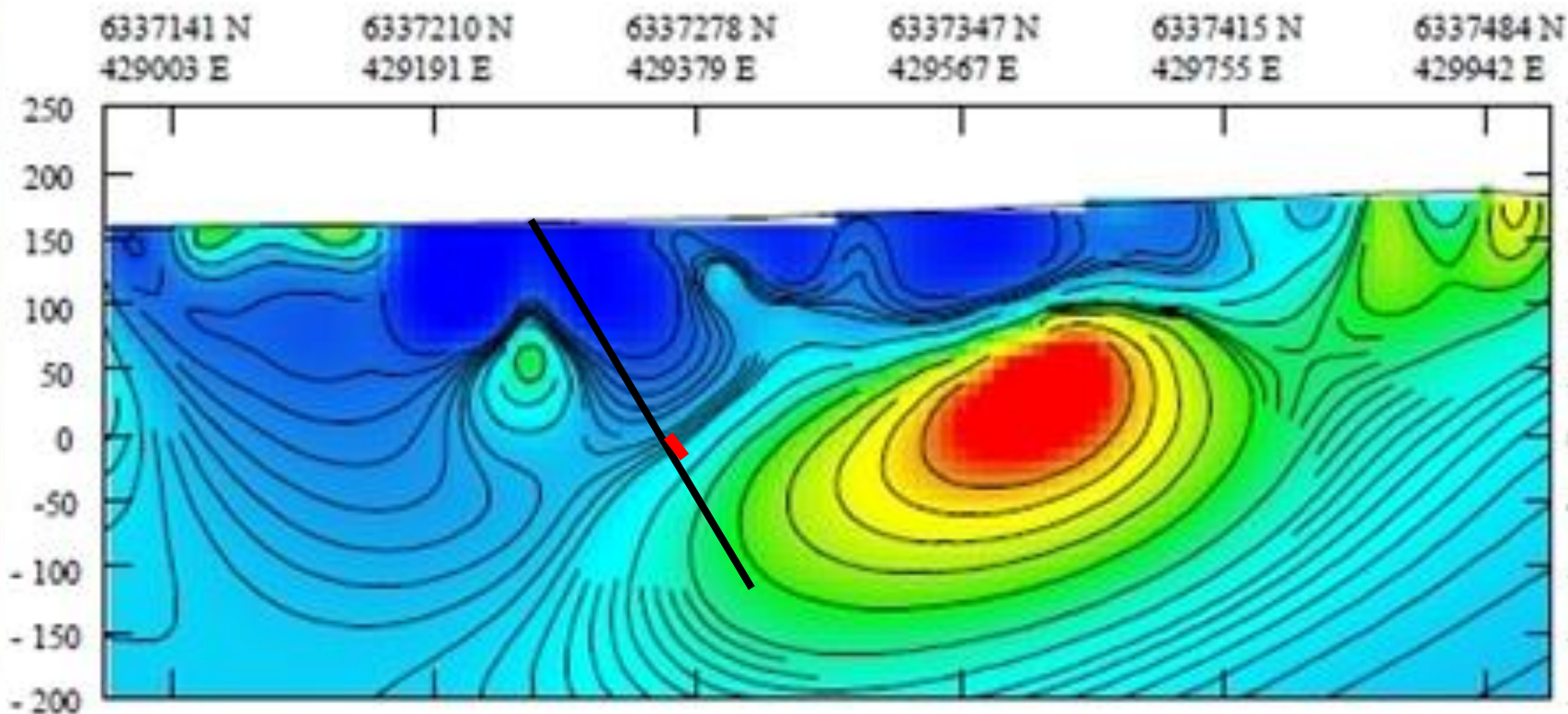
Source: ITRI and Canaccord Genuity estimates

Prospect Review

- Intrusion Related Gold systems in the Thomson Fold Belt ★
- Tin – tungsten systems ★
- Cobar-type prospects ★
- Porphyry Cu-Au potential ★
- Volcanogenic Massive Sulphide (VMS) anomalies ★
- Orogenic Gold ★



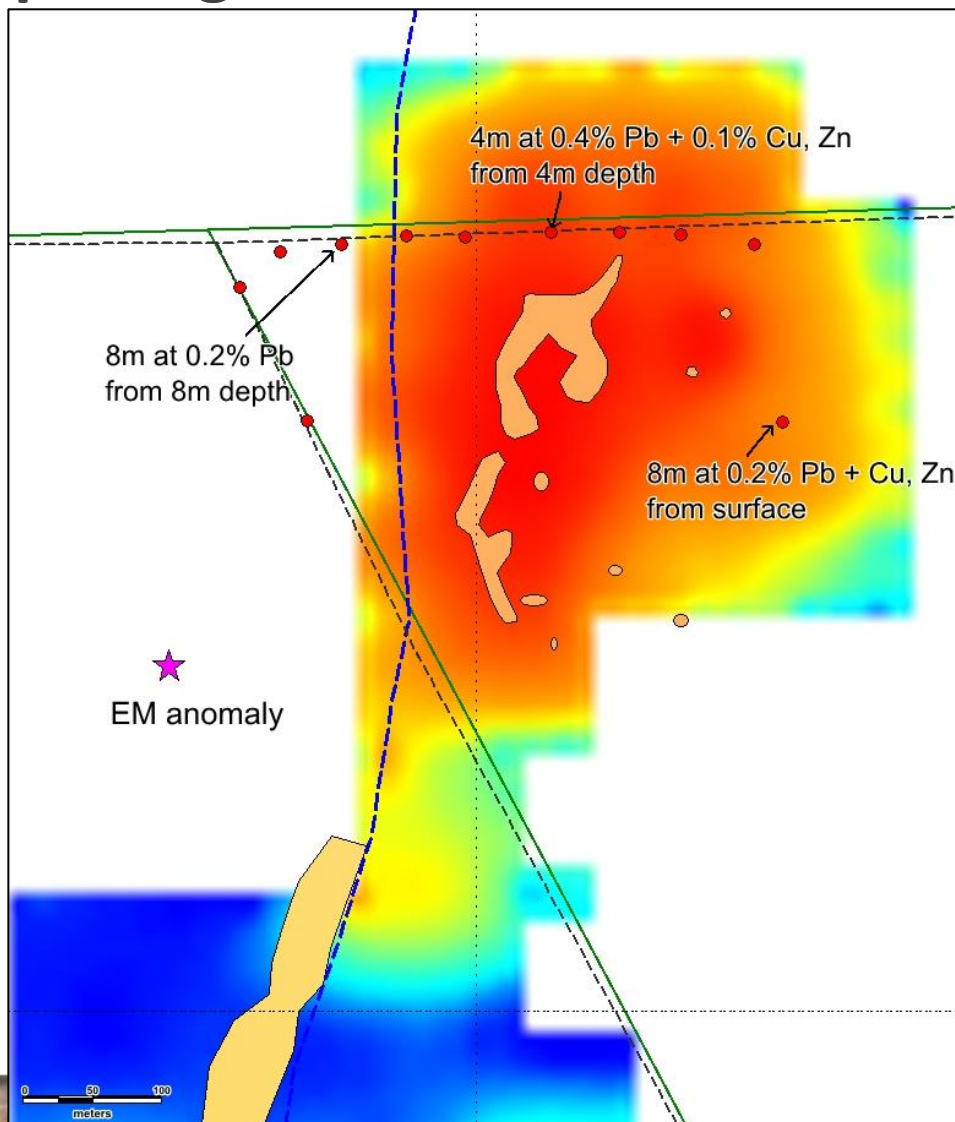
Cobar-type target: Mt Boorithumble



- Extensive (1km x 750m) geochemical anomaly in shallow drilling
- New analysis - strong IP anomaly to east of best hole
- 3 basement holes; best 3m @ 2% Pb, 2% Zn, 1.2% Cu, 0.5g/t Au and 150g/t Ag (approximate position shown)

Cobar-type target: Achilles 3

- Strong lead in soil geochemistry (coloured image)
- Anomaly capped by rhyolitic rocks
- 2012 Thomson shallow drilling around periphery – strong lead anomalism – up to 4m at 0.6% Pb+Cu+Zn from 4m depth
- EM showed anomaly off to side
- Main target not drilled



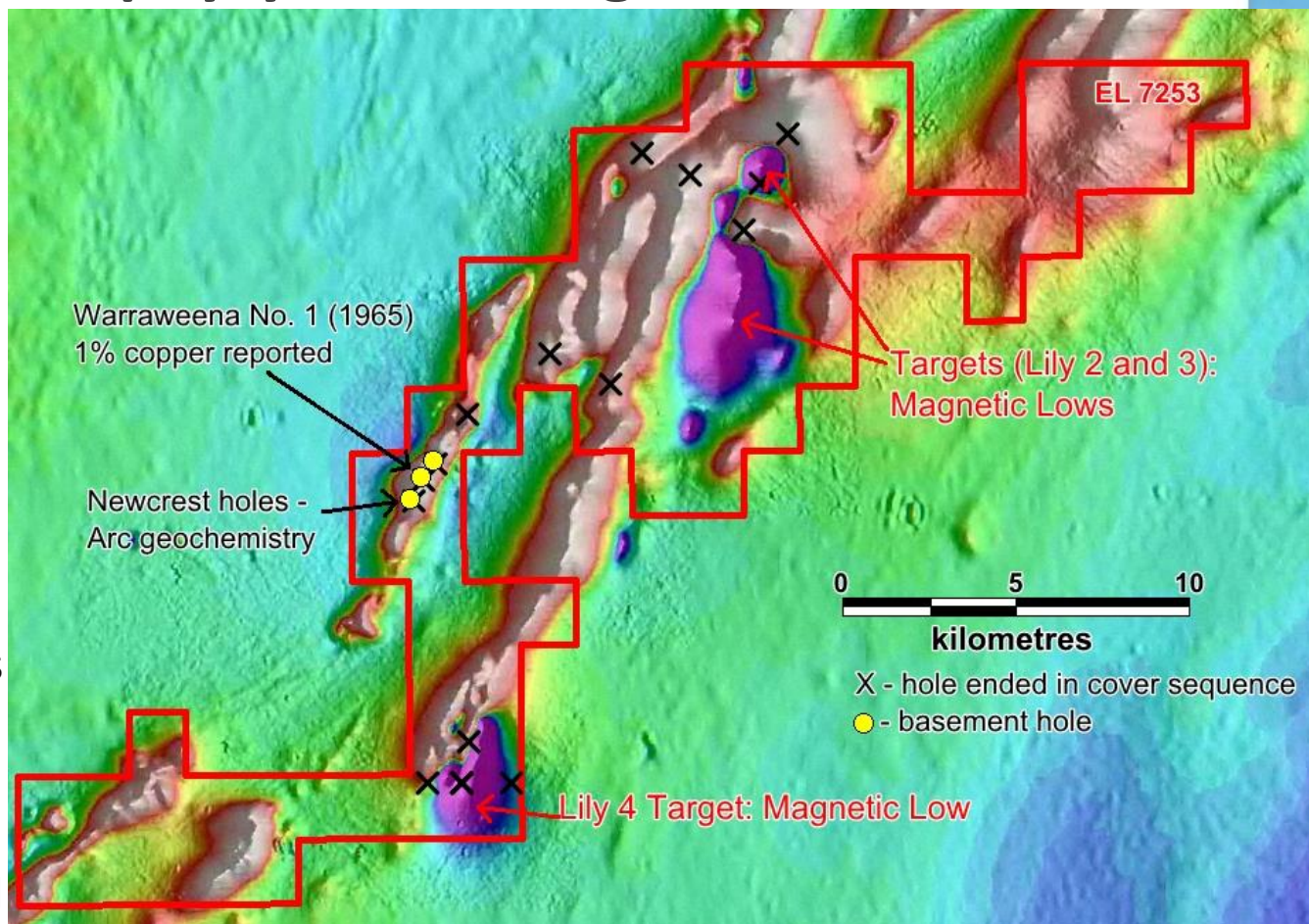
Prospect Review

- Intrusion Related Gold systems in the Thomson Fold Belt ★
- Tin – tungsten systems ★
- Cobar-type prospects ★
- Porphyry Cu-Au potential ★
- Volcanogenic Massive Sulphide (VMS) anomalies ★
- Orogenic Gold ★



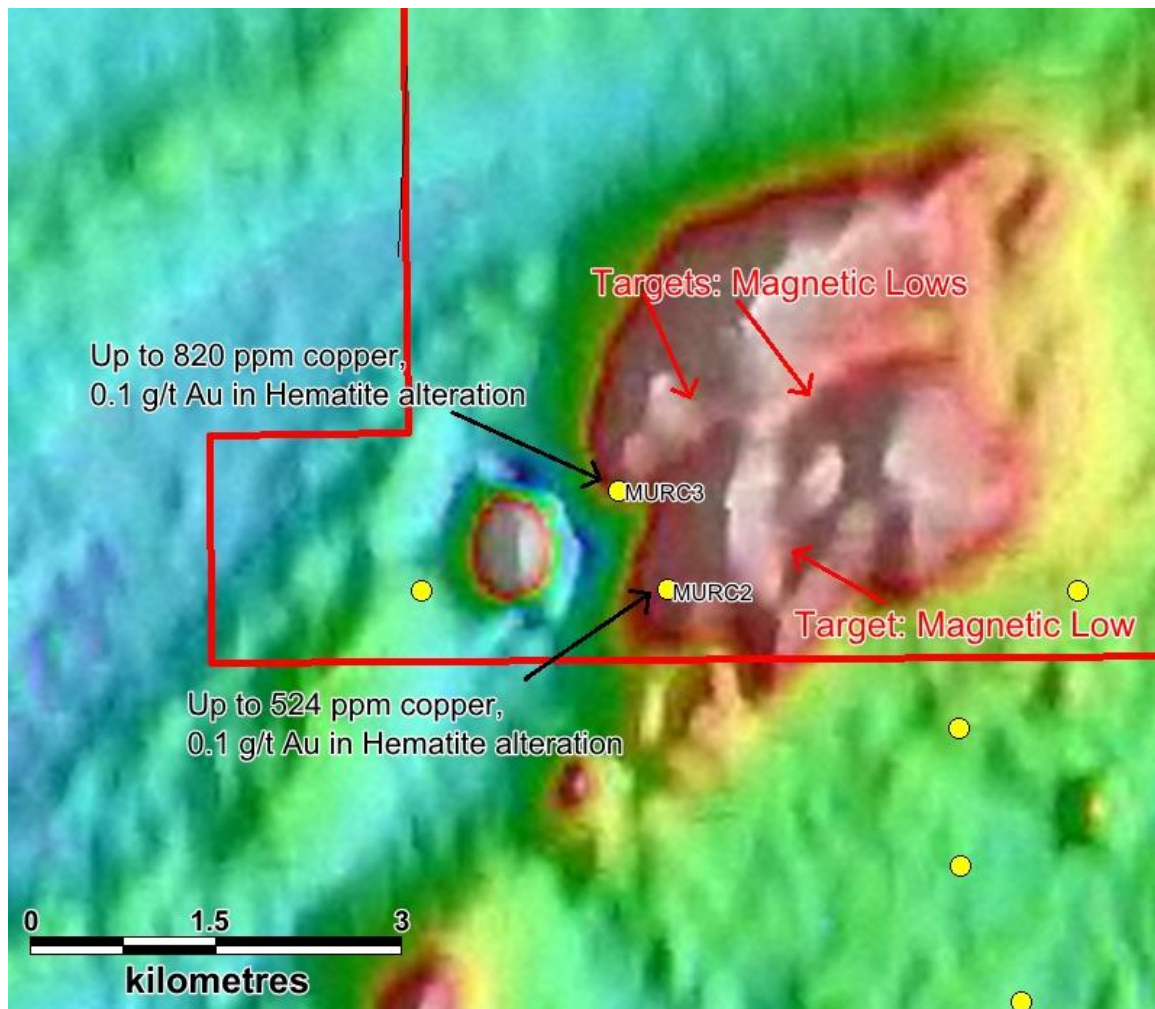
Porphyry Cu-Au Target: Warraweena

- Newcrest exploration – 3 effective holes in 2005
- Chemistry on Newcrest holes shows Macquarie Arc shoshonitic-type
- 30km strike length of covered Arc rocks untested
- Anomalous zinc (717 ppm), copper (166 ppm), and gold (0.1 g/t) in cover rocks



Porphyry Cu-Au Target: Mullagalalah

- Large magnetic anomaly – 3km x 3km
- Two holes by YTC in 2010 targeted marginal magnetic highs
- Both recorded hematite alteration with anomalous copper-gold
- To target hematite more effectively – go for magnetic lows
- Age - $414.9 \pm 4.2\text{Ma}$ (Early Devonian – i.e. not Macquarie Arc)

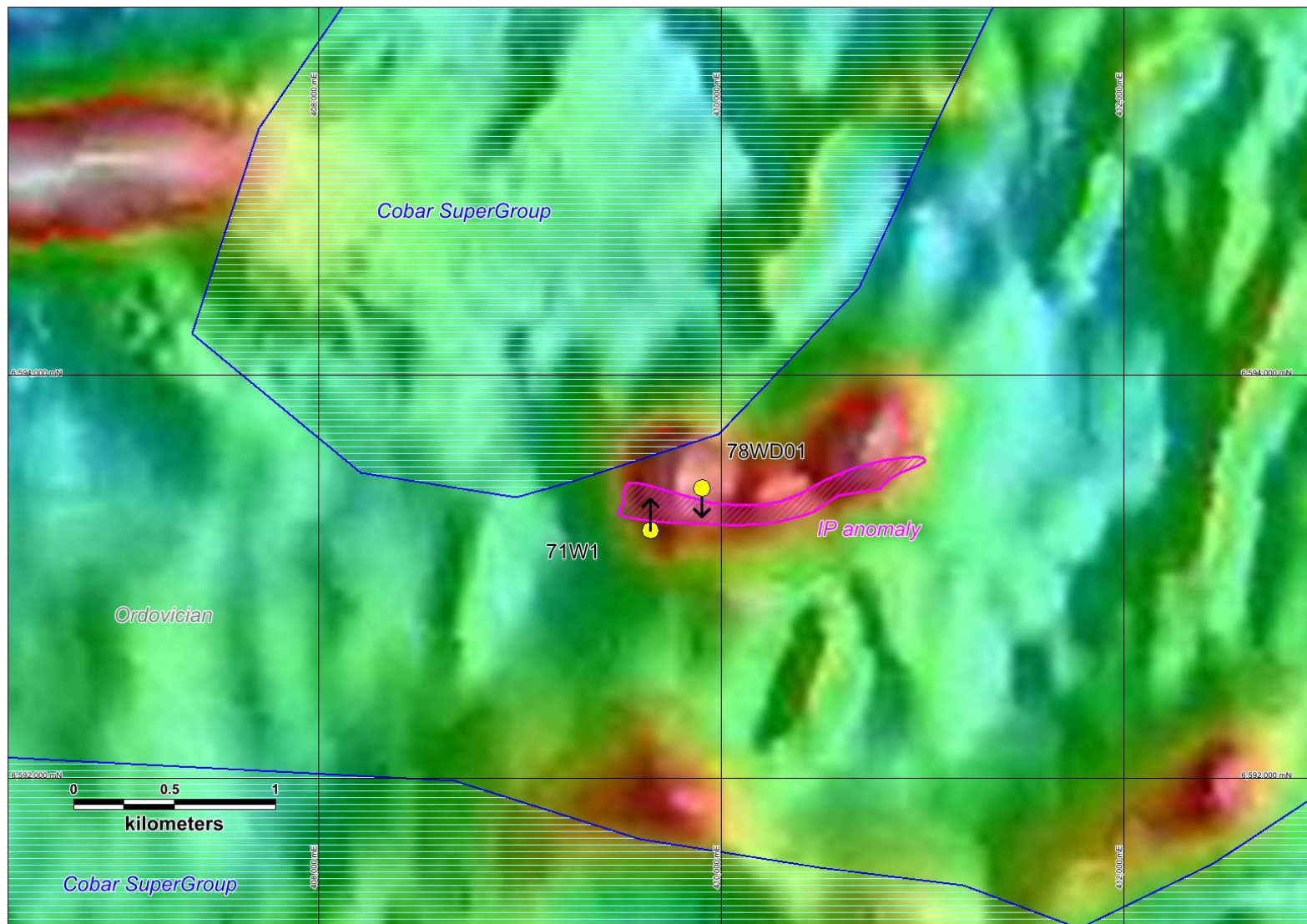


Prospect Review

- Intrusion Related Gold systems in the Thomson Fold Belt ★
- Tin – tungsten systems ★
- Cobar-type prospects ★
- Porphyry Cu-Au potential ★
- Volcanogenic Massive Sulphide (VMS) anomalies ★
- Orogenic Gold ★

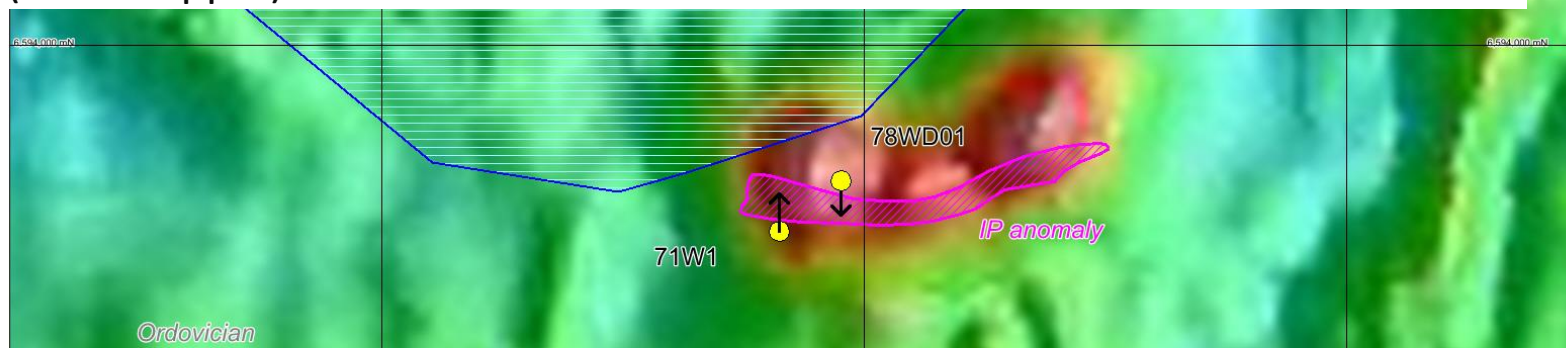


VMS Target: Wilga Downs

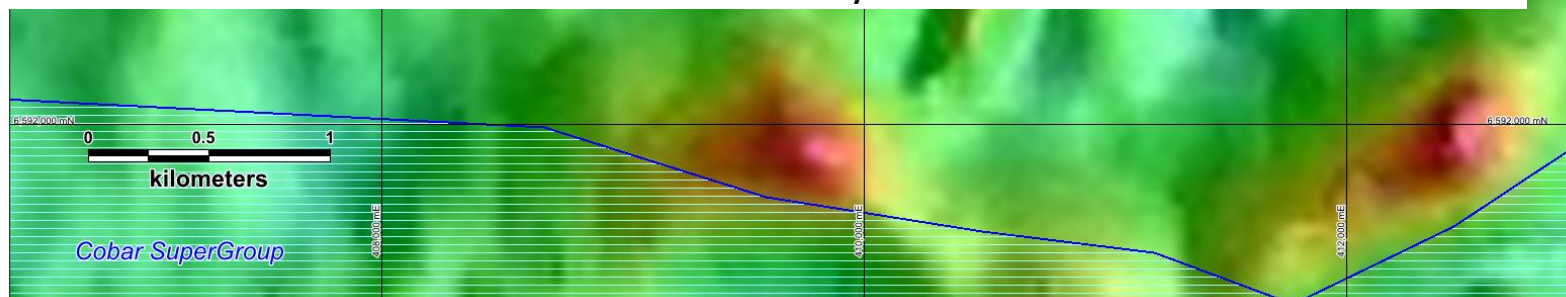


VMS Target: Wilga Downs

- 1km magnetic anomaly – in Ordovician anticline
- Coincident IP, soil anomaly
- Two holes – AMAX 1971 – down dip, 150m anomalous Cu (to 1300ppm), Pb (to 600 ppm) and Zn (to 1700 ppm)
- Then CRAE 1978 – again anomalous Cu (to 610ppm), Pb (to 2900 ppm) and Zn (to 2200 ppm)



- Neither hole tested full extent of IP anomaly



Positive Investment Strategy

- Target concept proved – new mineral field discovered
- Strong portfolio in well endowed Cobar region
- Cash on hand allows additional project assessment
- Experienced and skilled board and management team

