

*Sourcing the
raw materials
of the future*

ASX: SYA

SAYONA
MINING LIMITED
AUGUST 2016

Canary Networks Battery Materials
Investor Roadshow

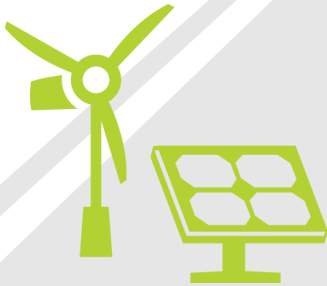
**Charging Ahead To Develop
The Authier Lithium Project**

The Green Energy Revolution



Creating Demand for **Graphite & Lithium** for Use in Batteries

The Company's strategy is to **change the world and power the future** by sourcing and developing the raw materials essential for lithium-ion battery production

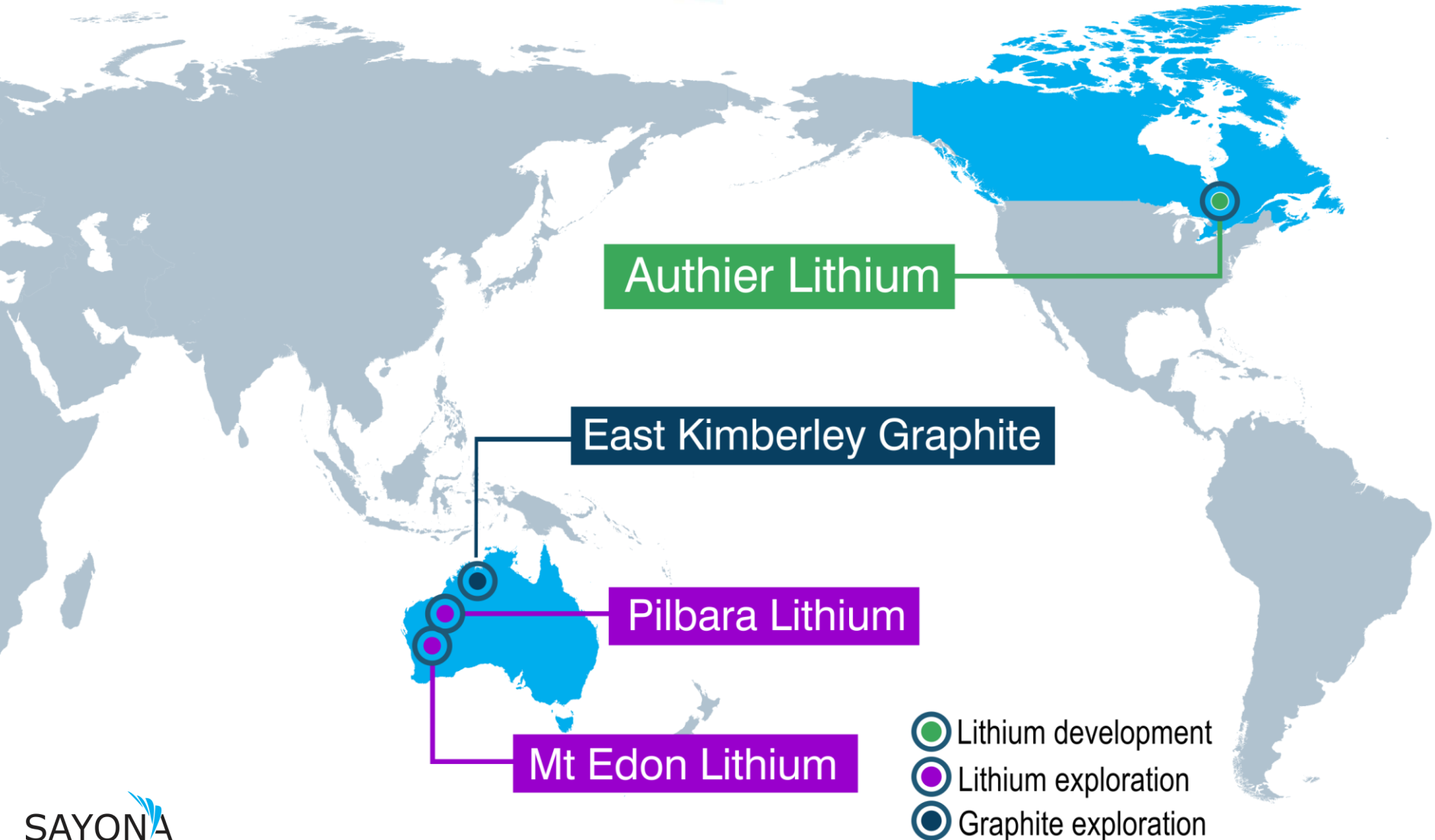


Project Portfolio

Lithium

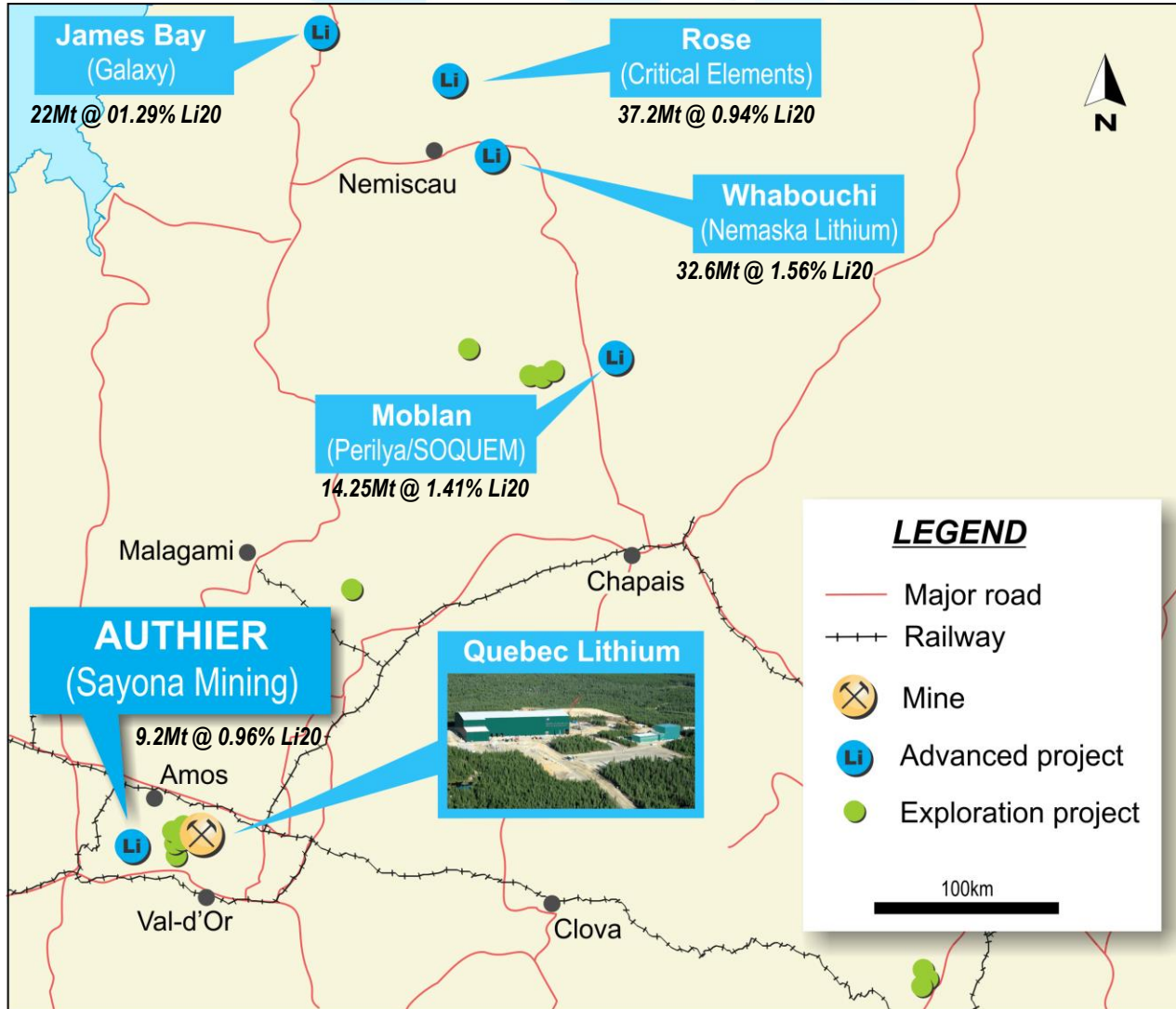


Graphite



Quebec, Canada

A globally significant region for lithium deposits



Quebec has a well developed & Government supported mining industry

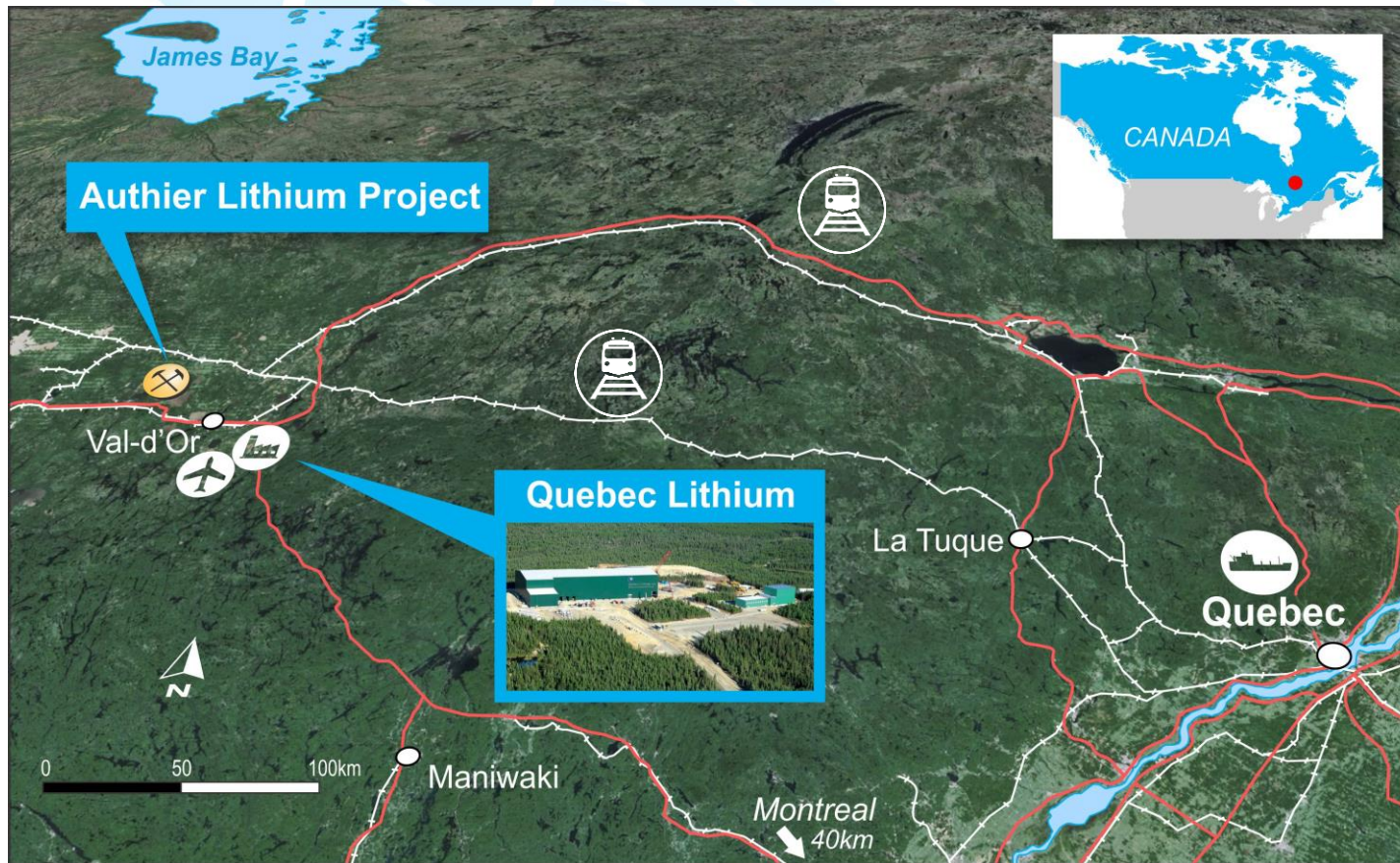
TOP rated mining jurisdiction by Fraser Institute (no. 6 in world)

Host to a number of large high-grade Lithium deposits

Most infrastructure and transport logistics constrained – require capital intensive lithium carbonate plants

Authier Infrastructure

Well established development infrastructure



Excellent Infrastructure

Low cost **hydro power**
Road and rail access
Experienced **local**
mining workforce

653 ha
tenement
package

Located in a major
mining district

50km by road to
the Quebec
Lithium Plant

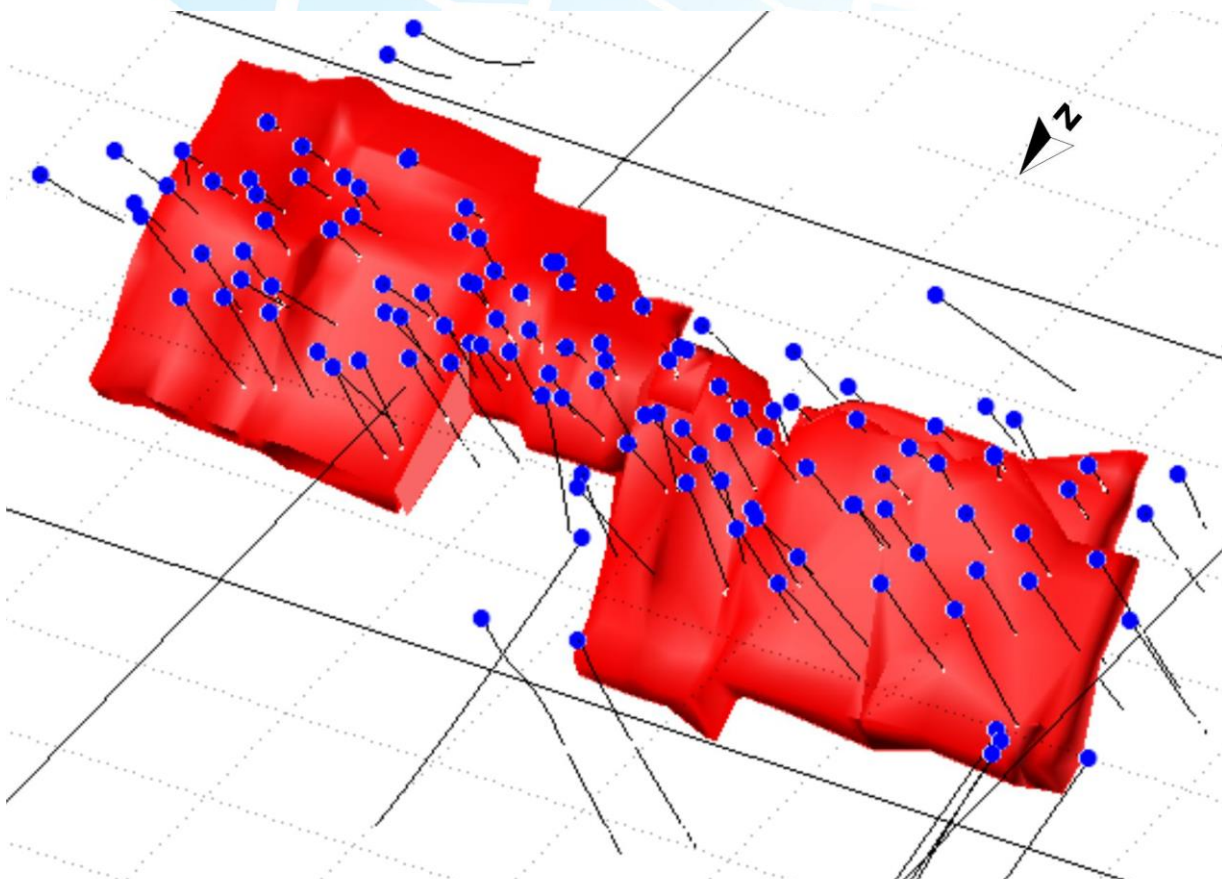




Authier Spodumene Bearing Pegmatite

Authier Lithium Deposit

Extensively drilled



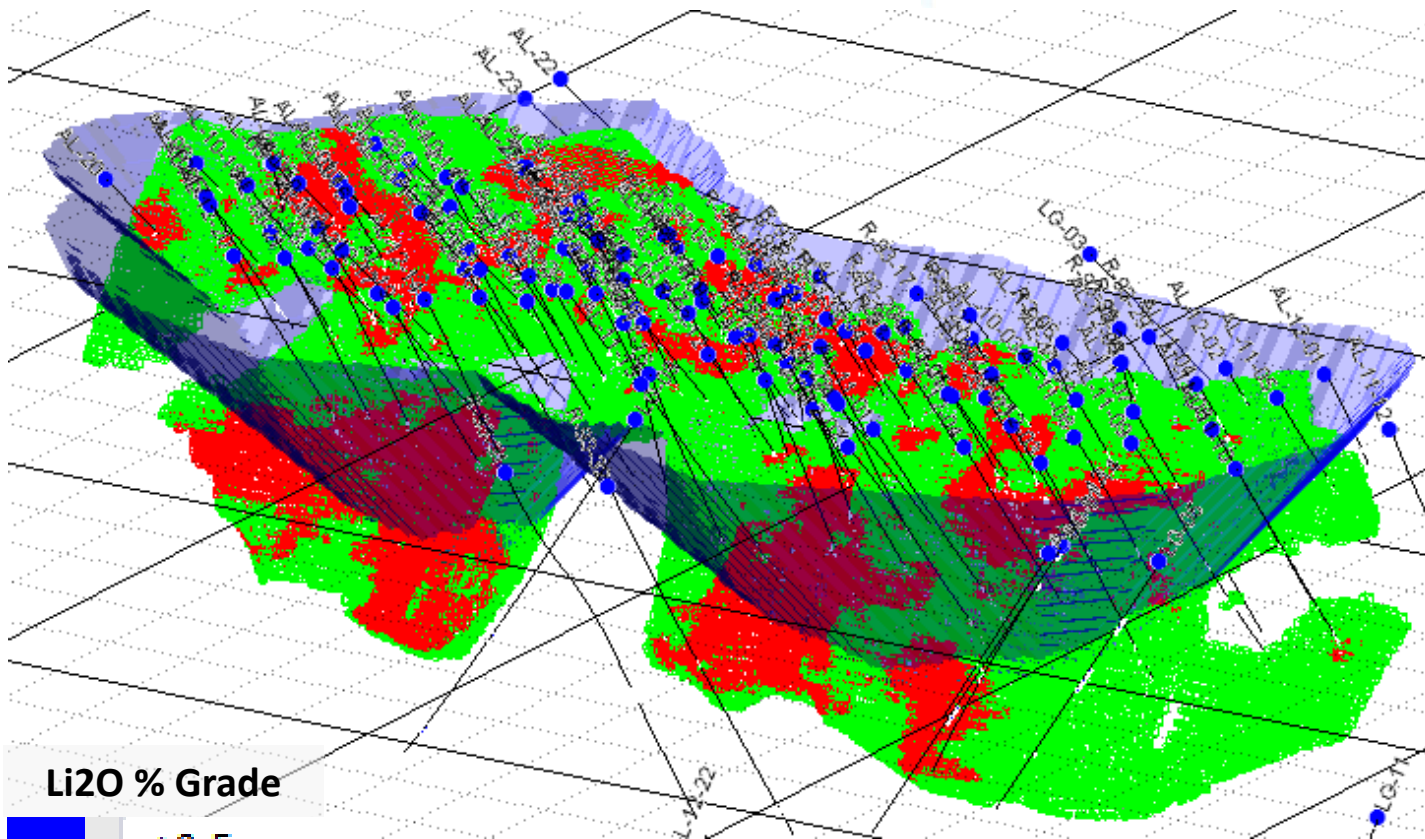
15,000m
drilled

123
holes

2,143
lithium assays



Simple deposit geometry



Li2O % Grade

 ≤ 0.5

0.5 to 1

1 to 2

 $\lambda = 2$

Authier Deposit

825m long

25m average width

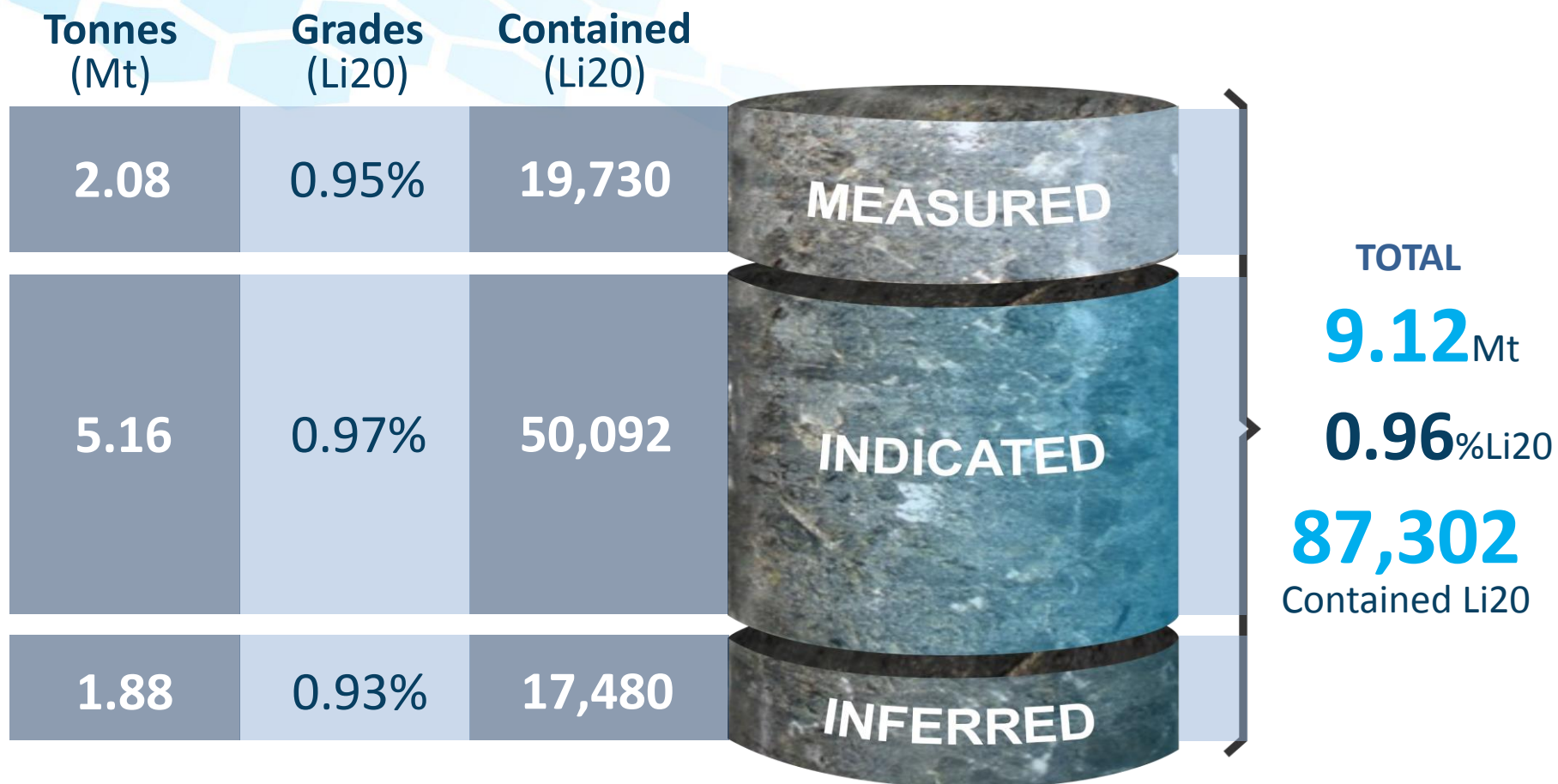
200m deep and still open

Well studied

NI43-101
completed in 2013

Commercial and technical viability confirmed

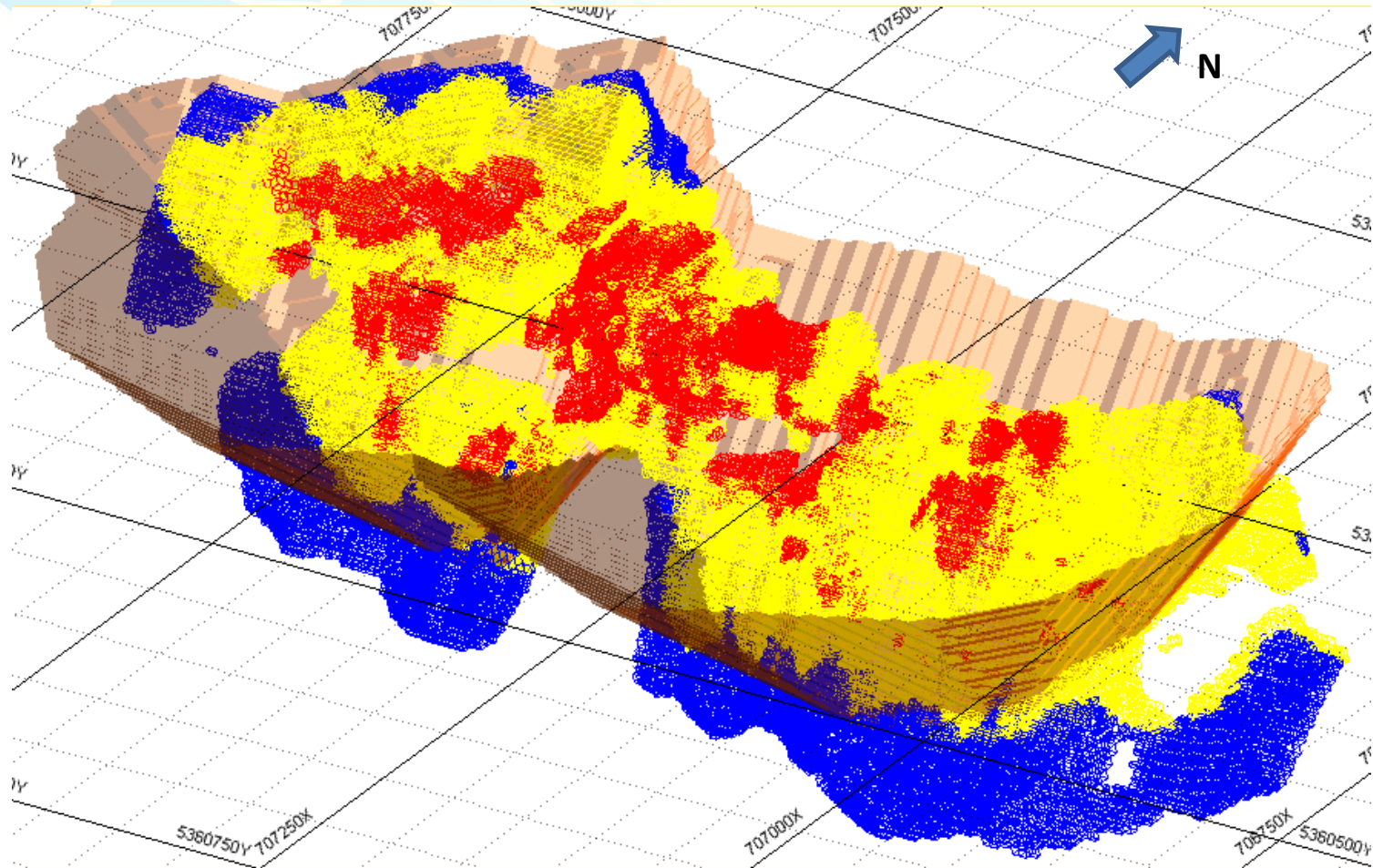
Authier JORC Mineral Resource



- 0.5% Li₂O cut-off grade*
- Cautionary Note - Mineral Resources are not Mineral Reserves and do not have demonstrated economic viability. There is no certainty that all or any part of the Mineral Resources estimated will be converted into Mineral Reserves estimate
- The resource has been estimated and reported in accordance with the guidelines of the Australasian Code for the Reporting of Exploration Results, Mineral Resources and Ore Reserves (JORC Code 2012).

Authier Deposit Resource Distribution

High proportion of measured and indicated resources



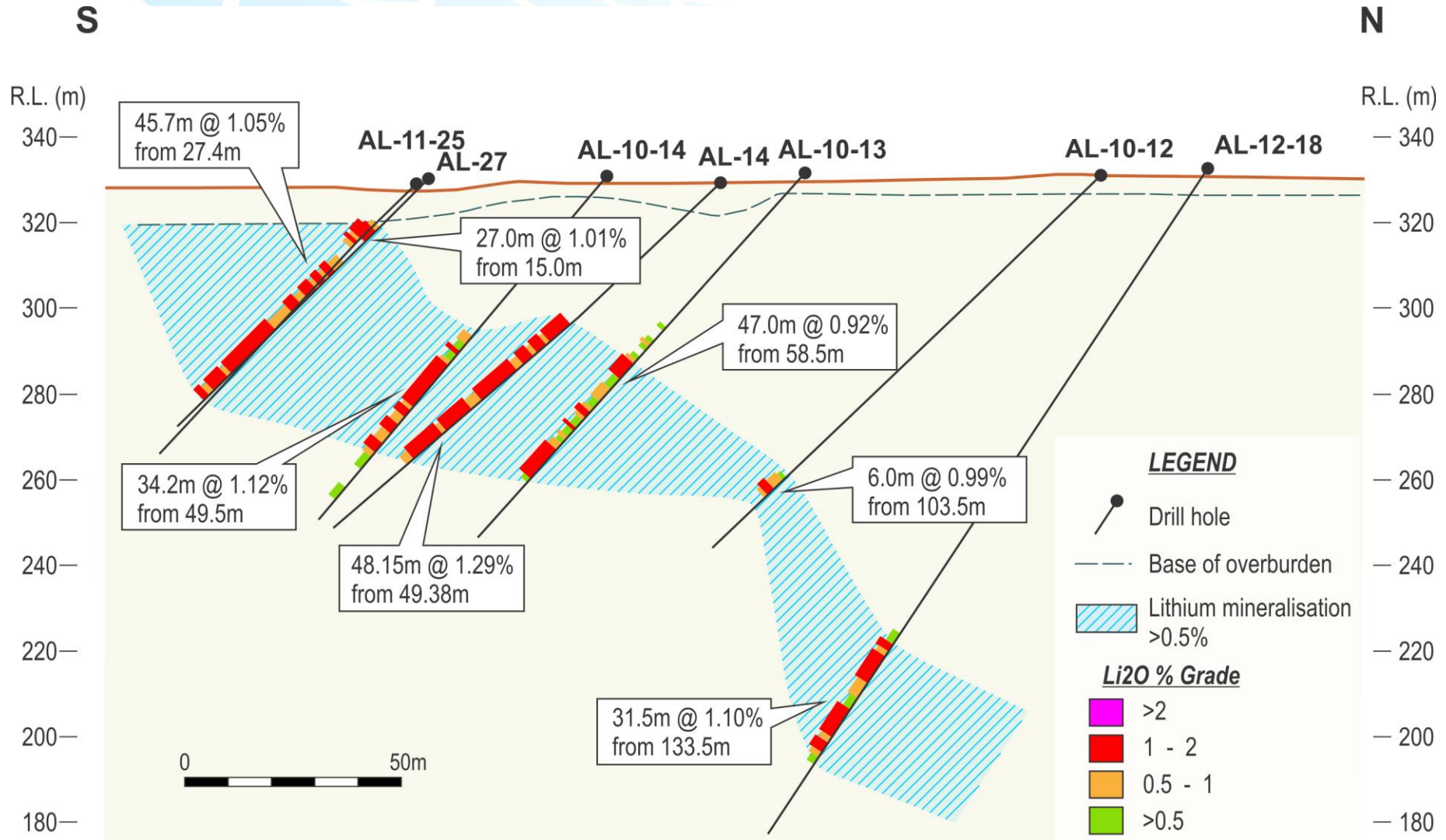
MEASURED
23%

INDICATED
57%

INFERRED
20%

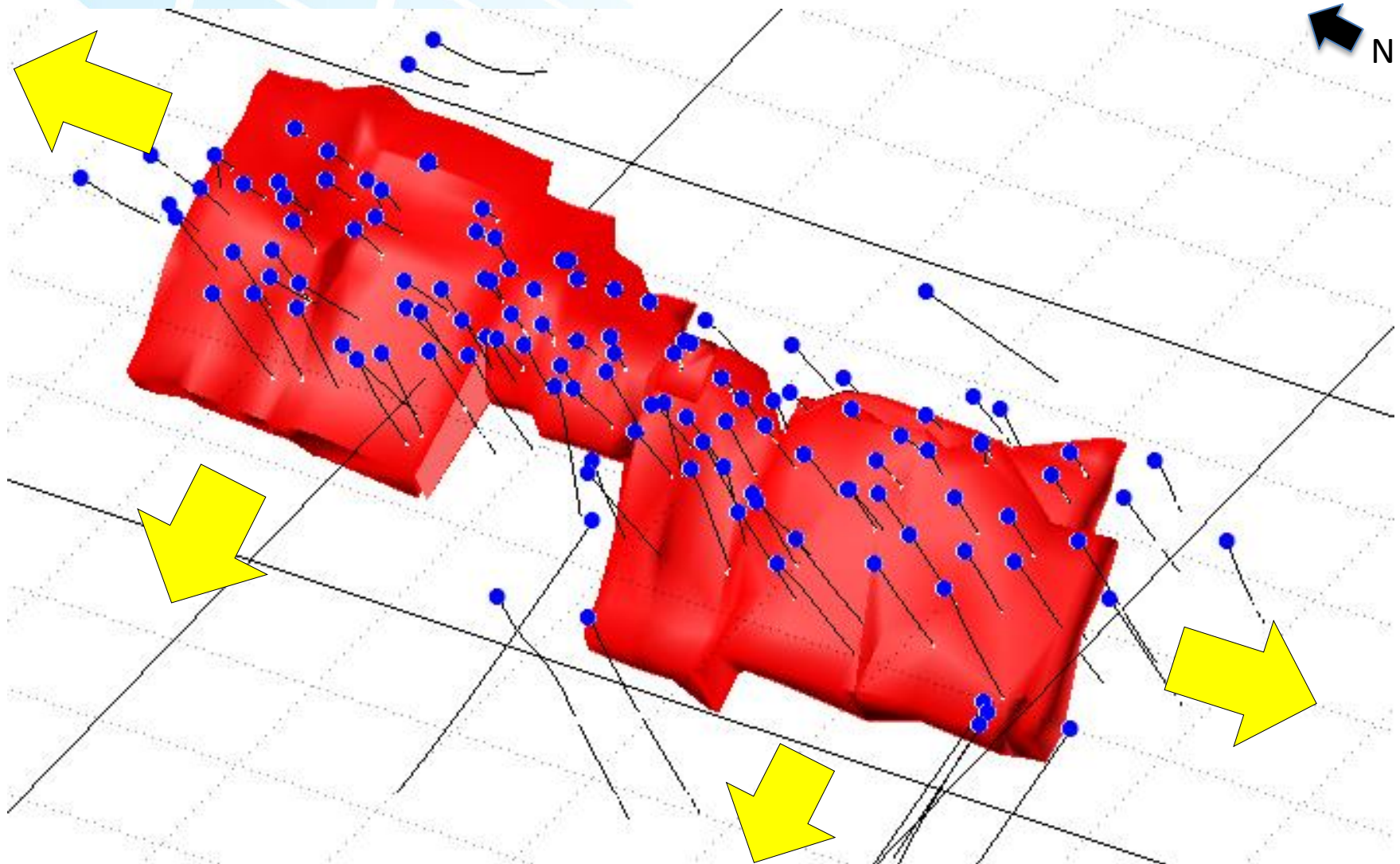
Authier Lithium Deposit Cross Section

Amenable to low-cost, open-cut mining techniques



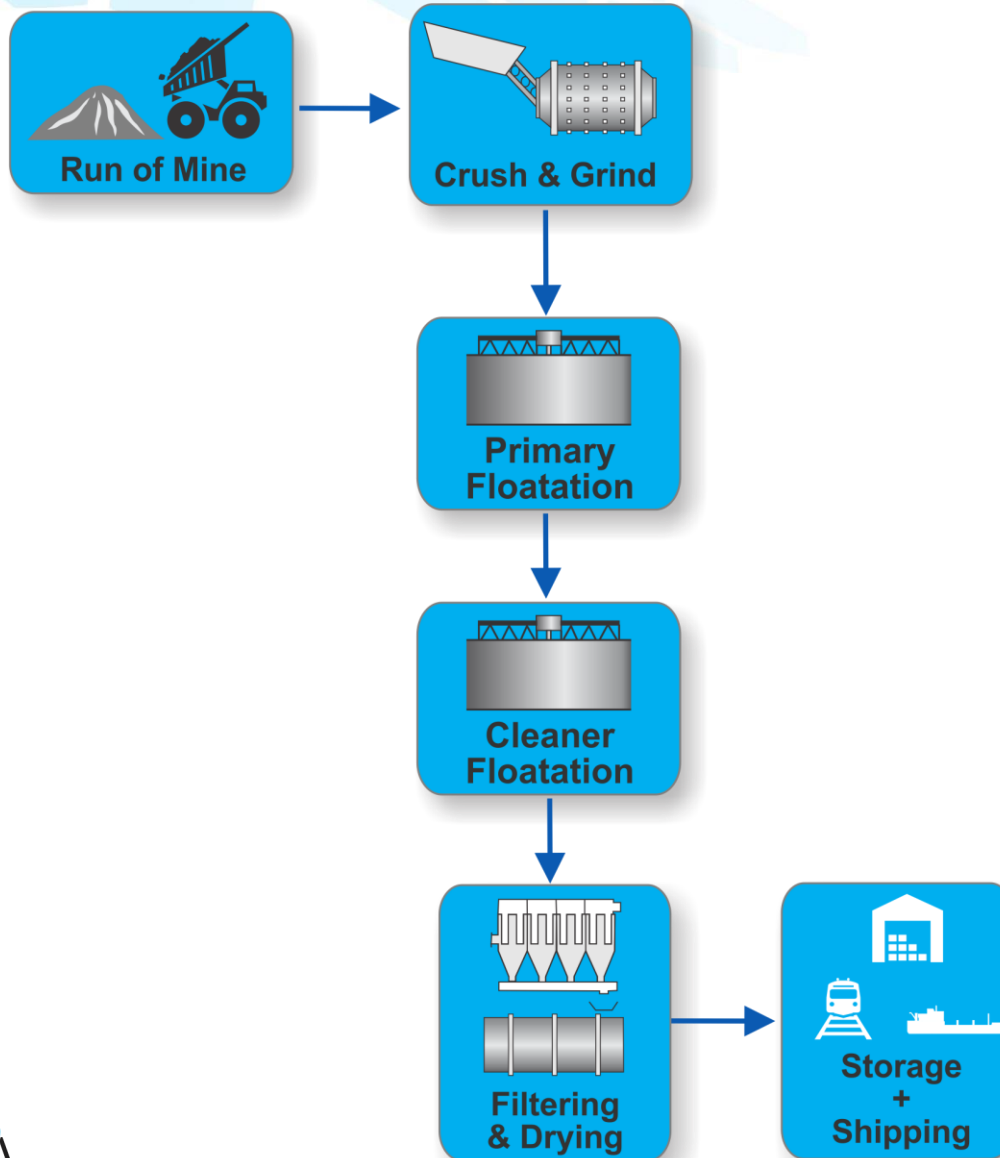
Authier Lithium Deposit Expansion Potential

Drilling to commence in September 2016



Authier Metallurgy

Conventional processing route



Flowsheet Design

85% recovery

5-6% Li₂O concentrate

Optimisation Options

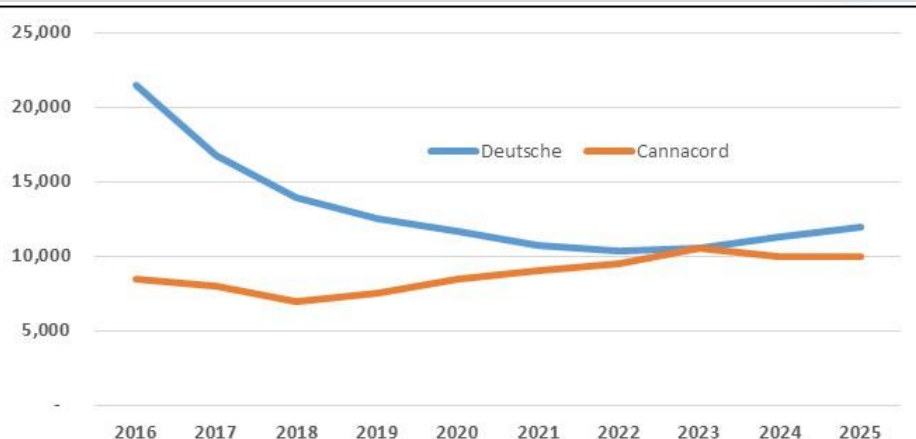
Dense Media Separation

Downstream processing into intermediate products

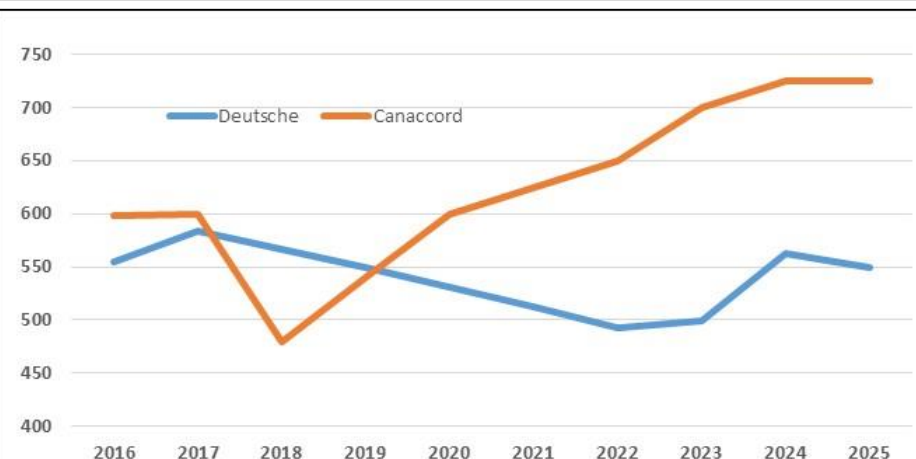
Spodumene Concentrate Pricing

Attractive price outlook for concentrates

Lithium Carbonate Price Forecasts*



Spodumene Price Forecasts*



Galaxy selling concentrates at US\$600/t

Significant higher than the Authier 2013
NI-43101 PEA price of CAD\$525/t

Lithium carbonate manufacturers still
making attractive margins at long-term
spodumene concentrate prices

Cost of 6% spodumene	US\$550/t	US\$700/t
Conversion recovery	85%	85%
Factor @ 6% concentrate	7.93	7.93
Concentrate cost	US\$4,362	US\$5,551
Freight/Insurance	US\$250	US\$250
Conversion cost	US\$2,000	US\$2,000
Total cost to Li₂CO₃	US\$6,612	US\$7,801
Converter margin @ US\$10,000/t Li ₂ CO ₃ price	US\$3,389	US\$2,199
Converter margin %	34%	22%

Source: Macquarie estimate. * Deutsche and Cannacord reports. US\$/tonne

Authier Summary



PROJET AUTHIER LITHIUM

WWW.GLENEAGLERESOURCES.COM

Nous ne sommes pas responsables des accidents.

PROJET GÉRÉ PAR:



WWW.SERVICESGFE.CA

1 877 727 4080



Low
Purchase
Price



Extensively
Drilled



Well
Studied



Open Pit



Simple
Process



Good
Infrastructure

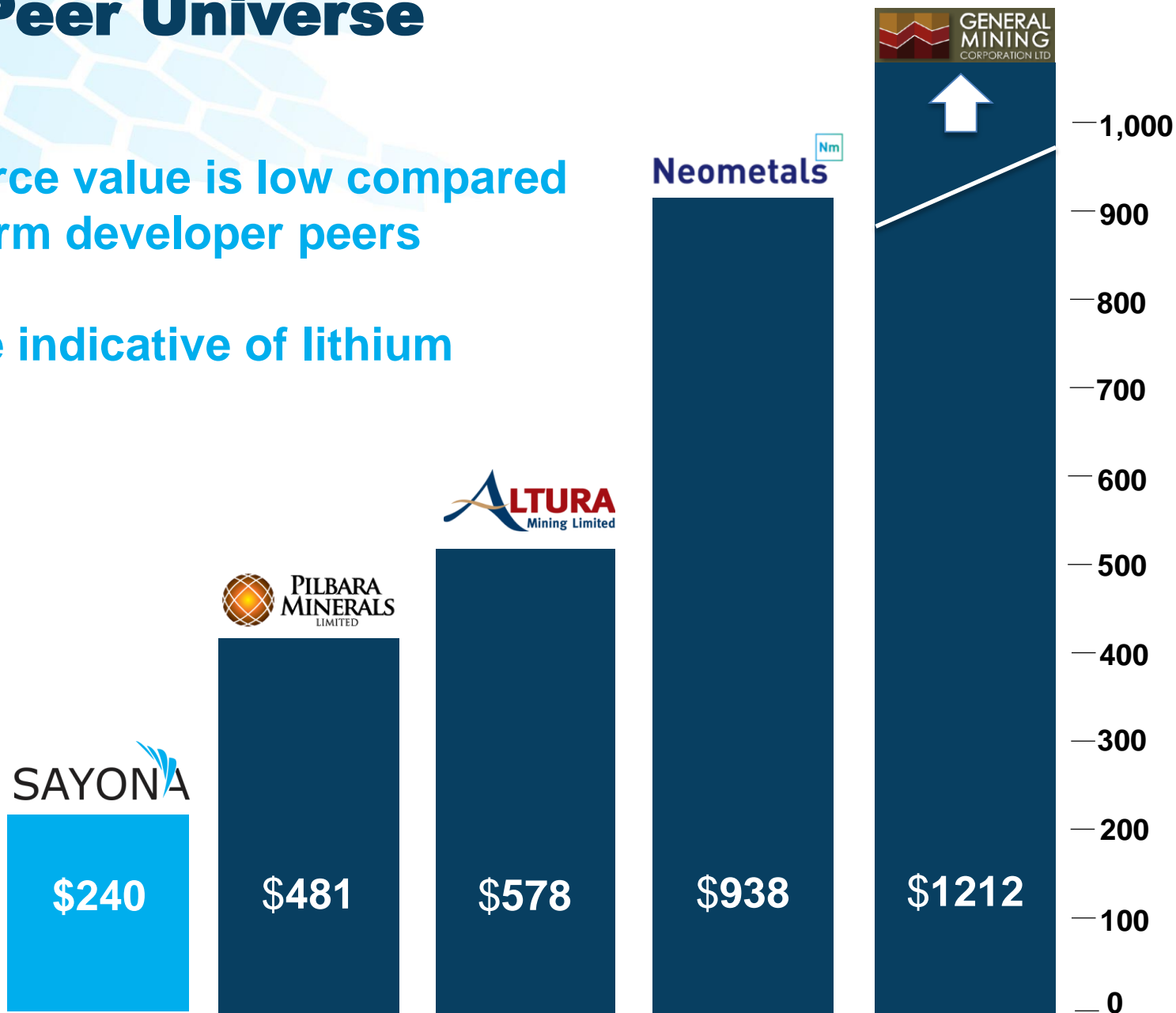
Authier Next Steps



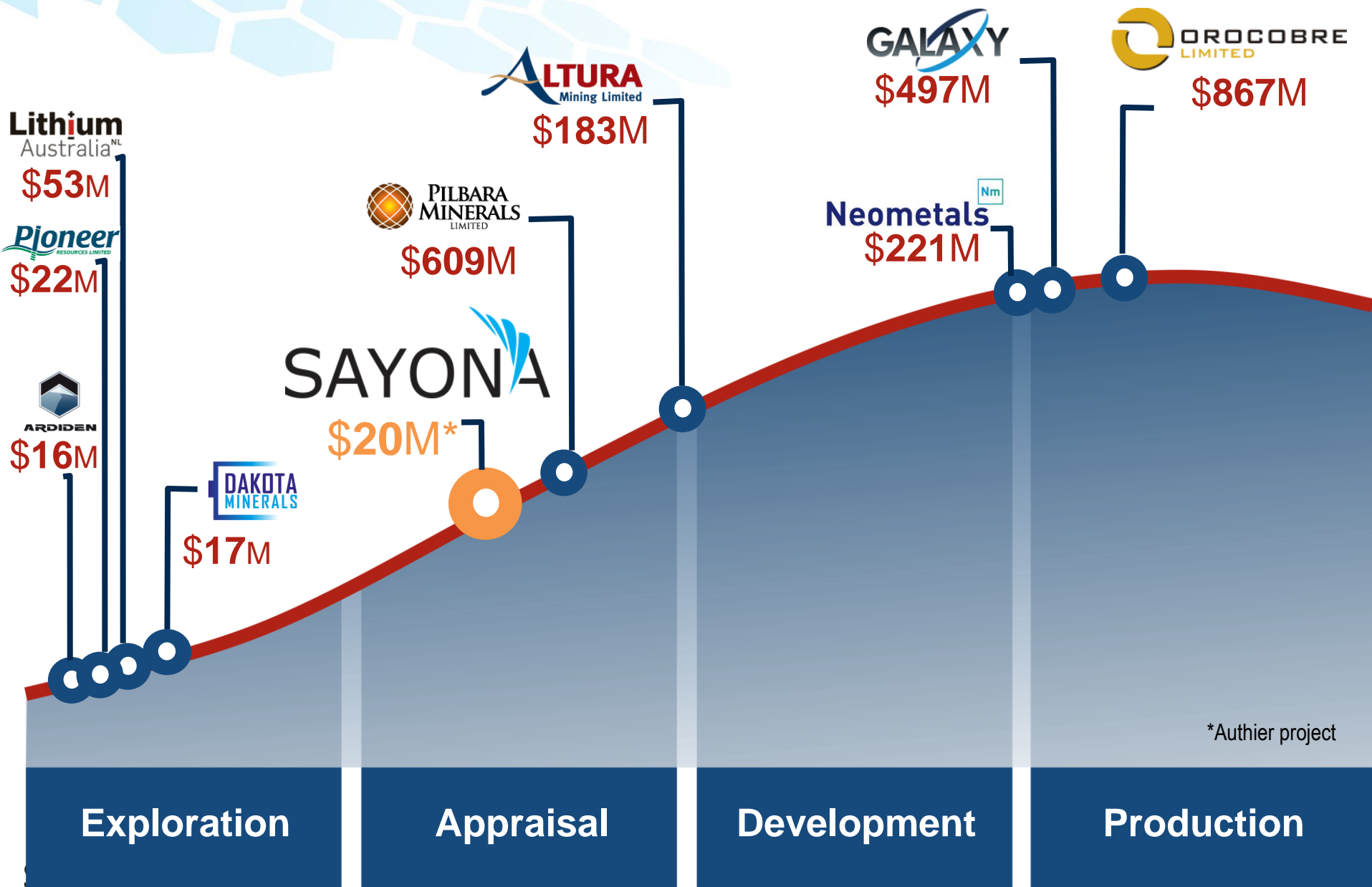
- ✓ Metallurgy program
- ✓ Resource definition drilling
- ✓ Resource upgrade
- ✓ Pre-Feasibility Study
- ✓ Bankable Feasibility Study
- ✓ Off-take and financing
- ✓ Construction and operation

Lithium Peer Universe

- EV/Resource value is low compared to near-term developer peers
- EV is more indicative of lithium explorers

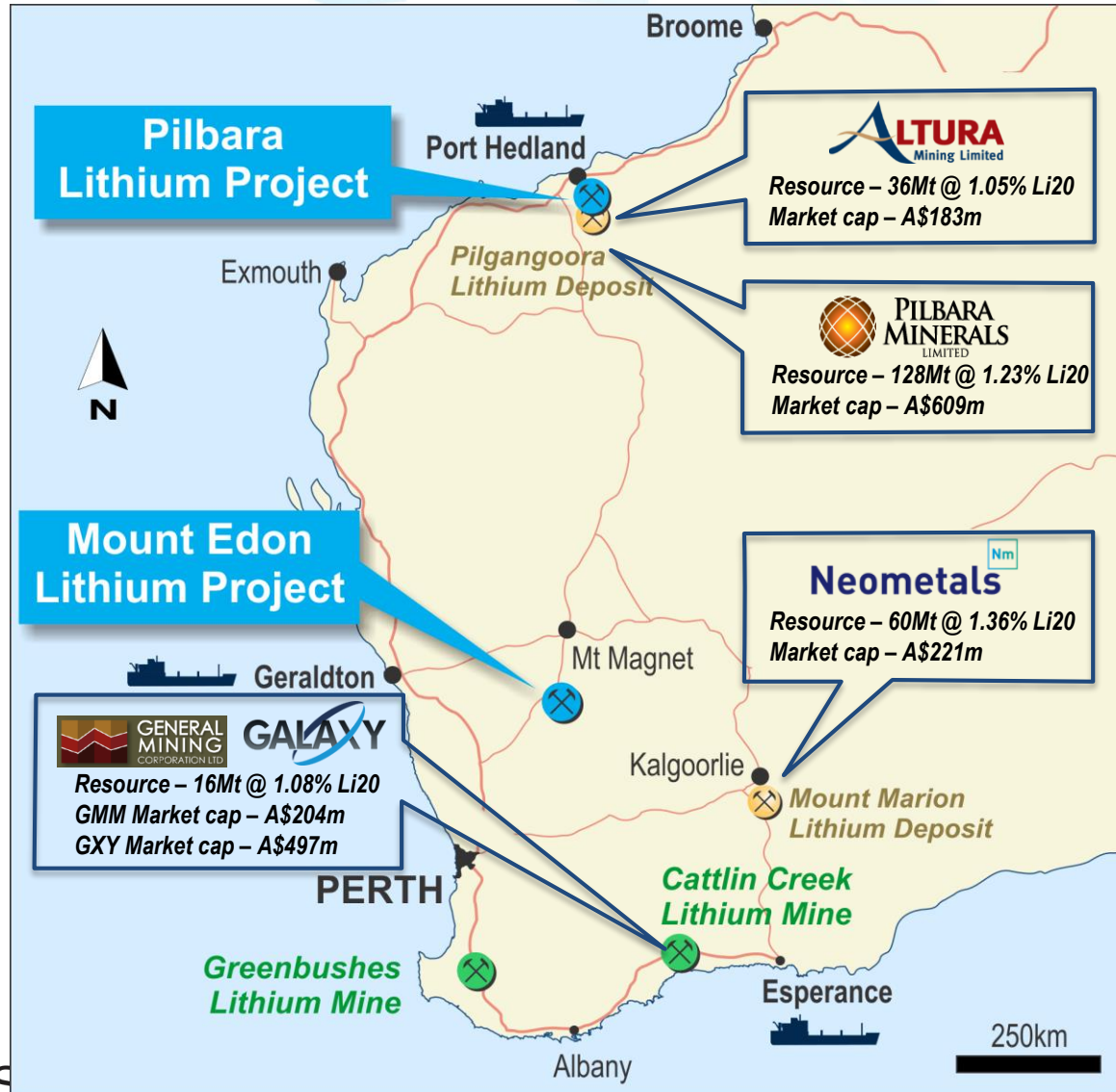


Authier Value Up-lift Potential



Western Australia Lithium Portfolio

A Globally Significant Region for Production of Lithium



Low-cost entry with

1,116 km²

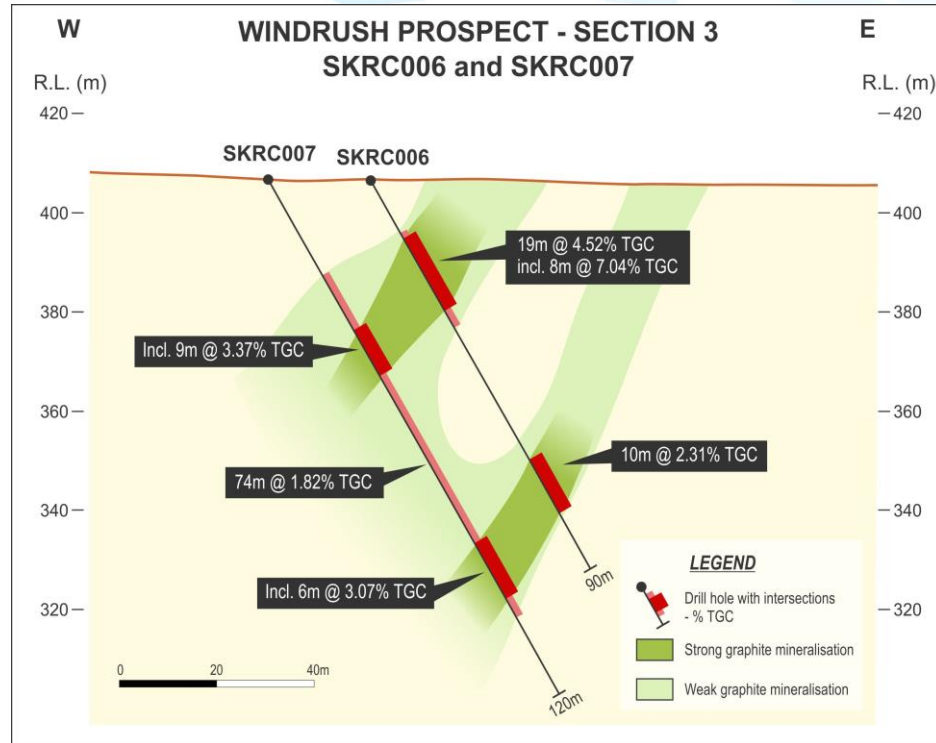
tenement holding,
including granted tenure

**Western
Australia**

a dominant global
producer of Lithium from
high-grade, hard-rock
PEGMATITES

East Kimberley Graphite Project

Diamond drilling planned to test grades and quality



3,000 m
drilling completed in
Dec 2015

6 km of 20 km
target zone drilled

Best assay
12%TGC

278km²

**tenement
package**

Proven graphite
province

Best Intercepts:
16m @ 5%TGC
22m @ 3.4%TGC

Open at depth and
along strike

Coarse graphite
observed

World-class
Infrastructure

for access to
**world
markets**

Corporate Summary

TRADING EXCHANGE

ASX: SYA/SYAO

SHARES/OPTIONS

800 Million shares*

266 Million options*

3c exercise, Dec 2016 expiry

SHAREHOLDERS

31% DIRECTORS

65% TOP 20

CAPITALISATION

Price

As at 16 August 2016

2.5¢

Market cap **\$20M**

Cash

\$2.2M

* Estimate following rights issue and conditional placement (Sept 2016)



Strong Team With Track Record of Success

Corey Nolan

Chief Executive Officer

23 years' of resources industry experience

Corporate and capital markets experience

Previously Managing Director of South American focused explorer, Elementos

Dan O'Neill

Managing Director

Geologist with 35 years' of resources industry experience

Founding director of Orocobre

Director of Altura Mining

Simon Attwell

Exploration Manager

29 years' mineral exploration experience - success in generation, exploration and discovery of mineral deposits

Director of Australian Tantalum, which owned Pilgangoora leases and was subsequently acquired by Altura Mining

James Brown

Non-Executive Director

35 years' experience in the resources sector

22 years with New Hope Corporation

Managing Director of ASX lithium company, Altura Mining - \$200m market cap.

Allan Buckler

Non-Executive Director

40 years' experience in the resources sector

Built mining operations in Australia and Indonesia as former director and chief operations officer for New Hope Corporation

Director of Altura Mining

Paul Crawford

Executive Director

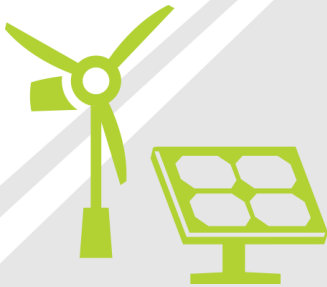
35 years' of resources industry experience

CPA and previously Company Secretary of companies including, Orocobre Ltd (founding director), Elementos and ActivEx

The New Era of Growth

- ✓ **Authier Pre-Feasibility Study and Drilling**
- ✓ **Western Australian lithium exploration**
- ✓ **East Kimberley Graphite Drilling Program**
- ✓ **Active stock promotion**

Additional Information Slides On the Lithium and Graphite Industries



Lithium ...

Critical in the Energy Revolution

Goldman
Sachs

“What if
I Told You.....
Lithium is the
New Gasoline”

Dec 2015

Lithium is now
considered a key,
strategic energy
metal in the clean
technology
economy that is
being fuelled by
advances in
electric vehicles,
energy storage
and electronics



Energy Storage –

The economic
value of energy
storage over a
10-year period in
the US could
reach **\$228**
billion, **21%** of the
\$1 trillion global
economic benefit

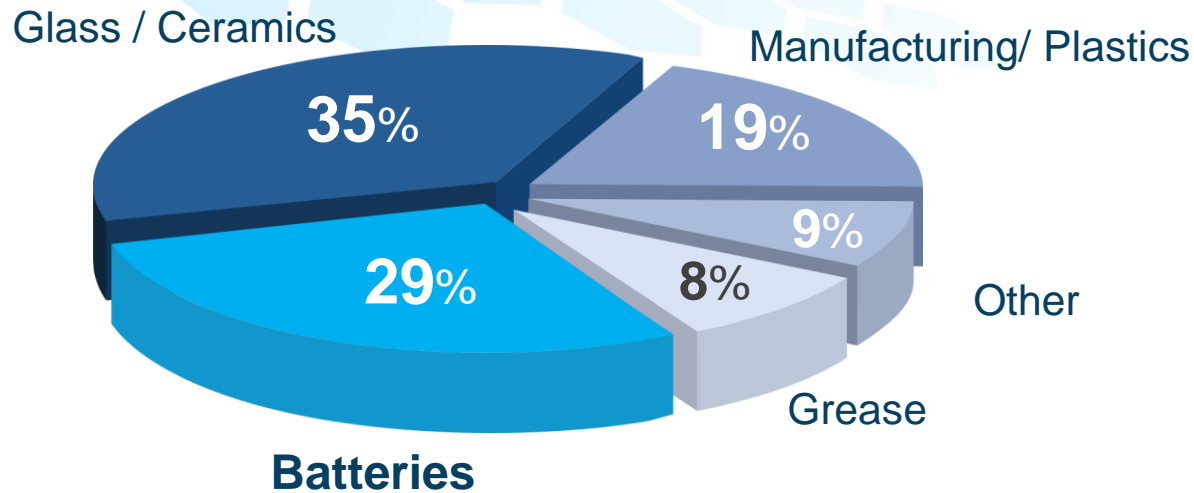
Disruptive Innovations II,
2014

The
Economist

“An
Increasingly
Precious
Metal”

Jan 2016

Lithium Consumption – The Future is Electric



Lithium-ion is the battery of choice



Super
energy
density



Lighter,
more
compact and
portable

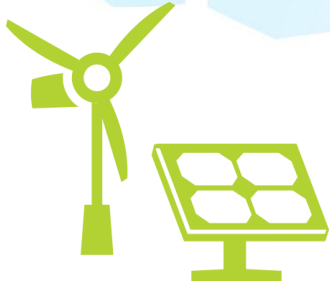


Longer life-cycle
and more
efficient



More
environmentally
friendly

Key Demand drivers through to 2025



Renewable grid storage

>30%
CAGR



Transportation –
electric and
hybrid vehicles

20-30%
CAGR



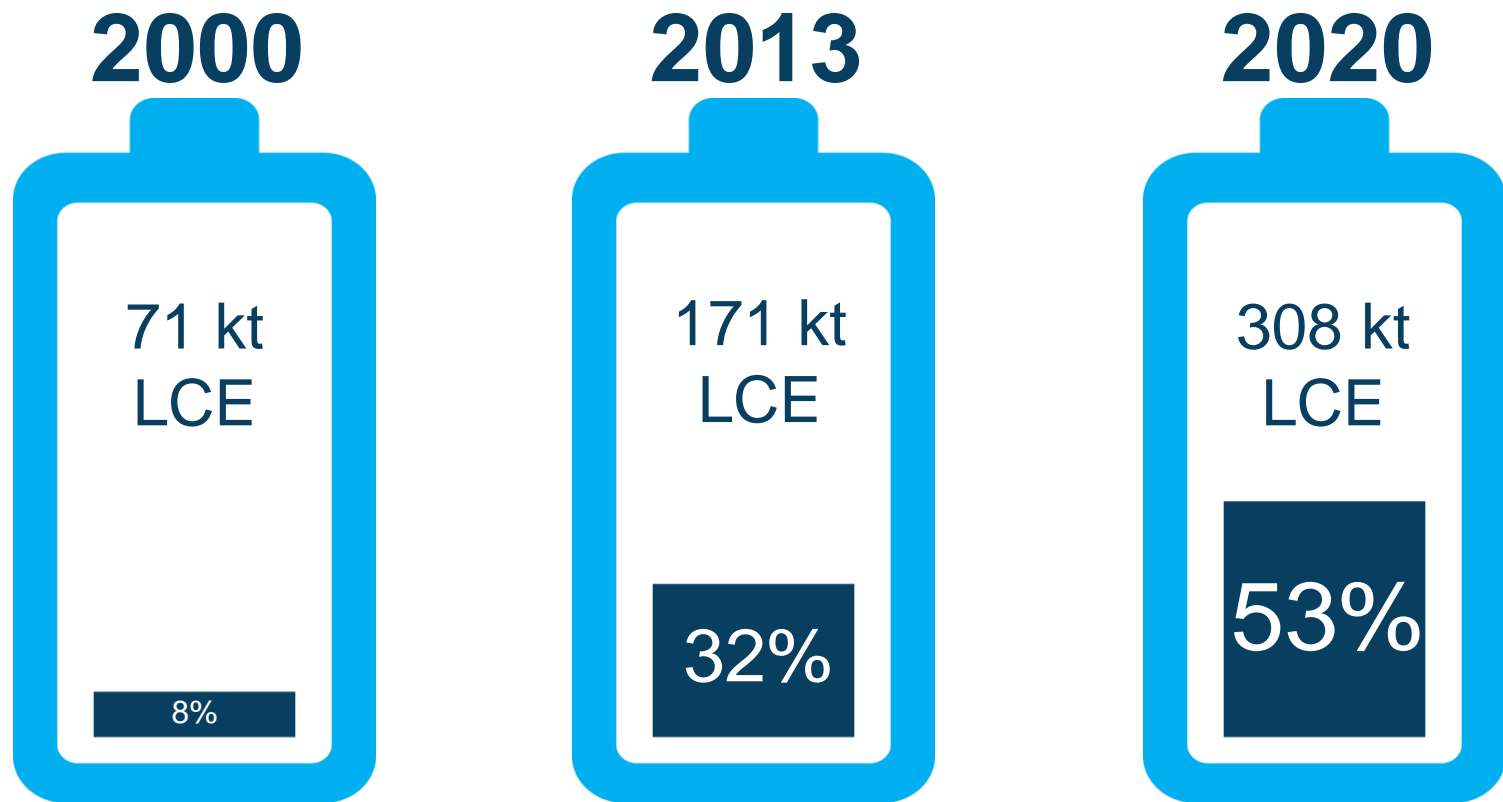
Consumer
electronics

8-10%
CAGR

Batteries are the fastest growing segment

“The *problem* with existing *lead-acid batteries* is that *they suck*”

Elon Musk



 Battery consumption as a % of total consumption

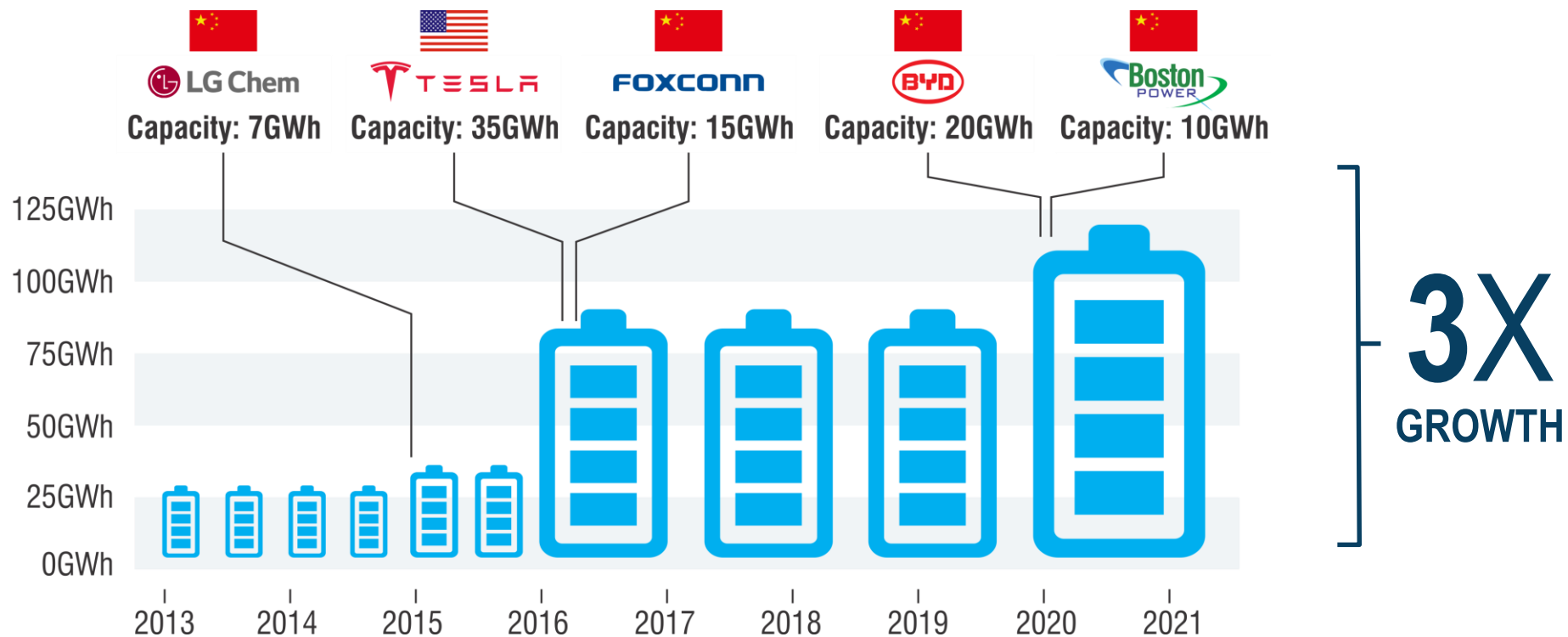
The Megafactories are Coming

“Solar power *[with] batteries* will be the *primary means* of sustainable energy production”

Elon Musk



Tesla's Nevada site



Dawn of a New Auto Era

“ Car design will *change more in the next 15 years* than it has in the past 100 — *electrification* will kick start the *biggest change in automotive design in history* ”

Ian Callum, head of design for Jaguar, April 2016

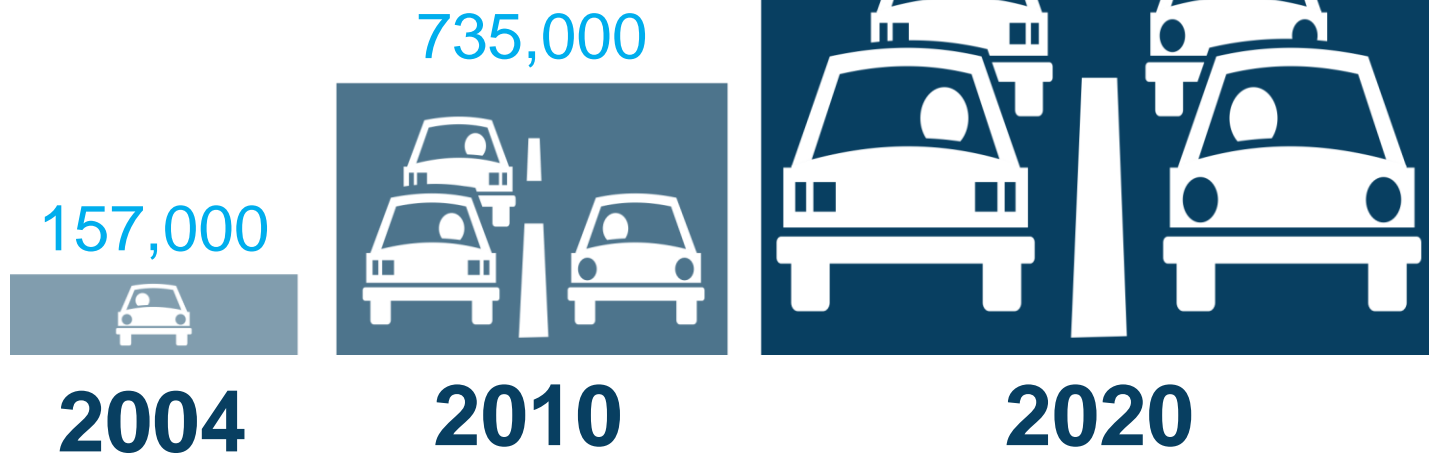


Electric & Hybrid Vehicles

20 MILLION **EV & HYBRID** CARS BY 2020



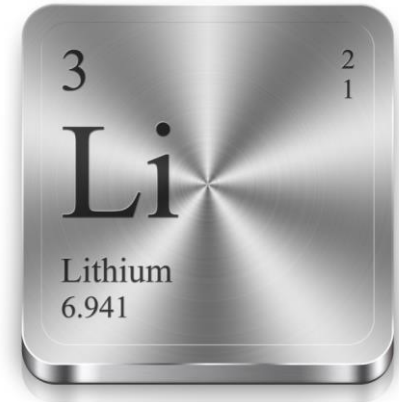
20 MILLION



Lithium Sources

LITHIUM IS A SOFT SILVER-GREY METAL:

- ✓ Low density and atomic mass
- ✓ High electrochemical potential
- ✓ High specific heat capacity



2 MAJOR SOURCES OF LITHIUM

Salt Lake (brine)



Hard rock pegmatite



**SIMPLE
PROCESSING**



**CONVERTS TO
LITHIUM-HYDROXIDE
FOR USE IN
LITHIUM-ION
BATTERIES**




Spodumene extracted
from pegmatites:

Few New Lithium SUPPLY Options Available

5 COMPANIES
PRODUCE

90% OF WORLD
SUPPLY

END USERS SEEKING
NEW SUPPLY OPTIONS

 **4%**
USA
(Brine)

14%
China
(Brine)

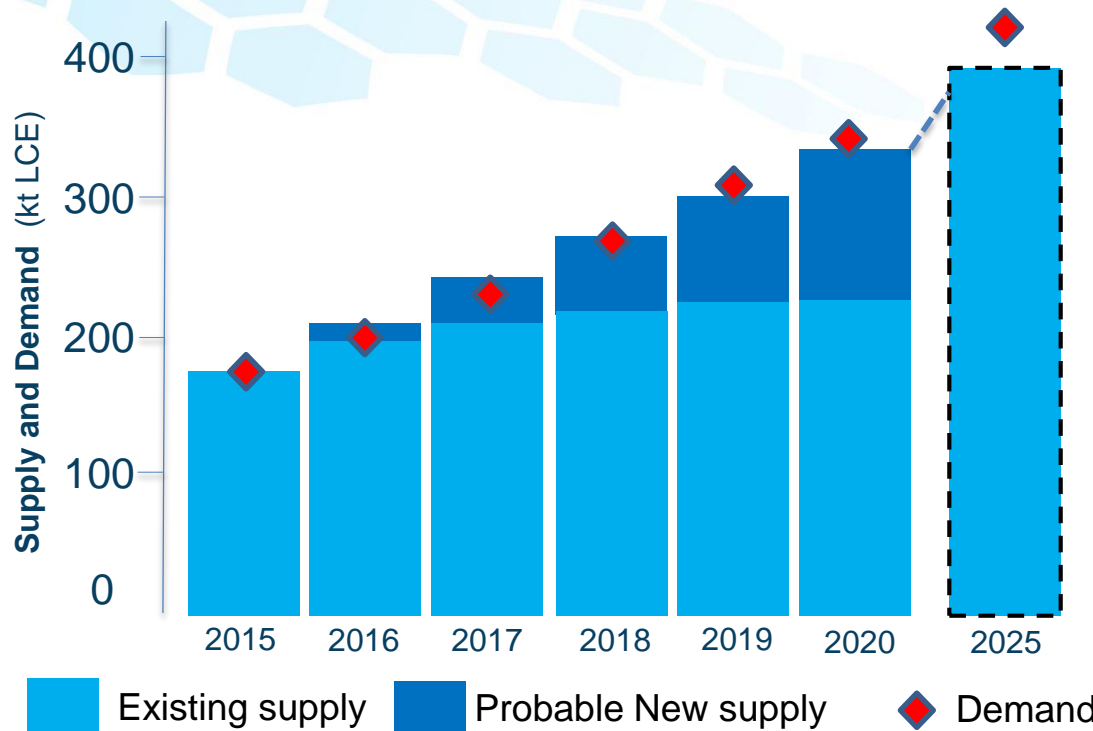


42%
Chile
Argentina
(Brine)



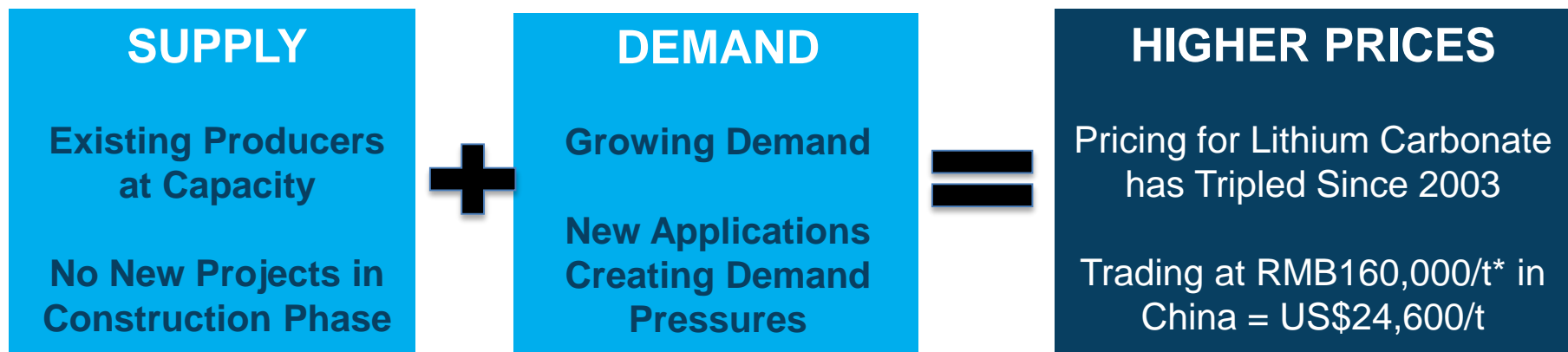
36%
Australia
(Hard Rock)

Supply & Demand – A Perfect Storm



BEYOND 2020

**GAP BETWEEN
SUPPLY & DEMAND
EMERGES**

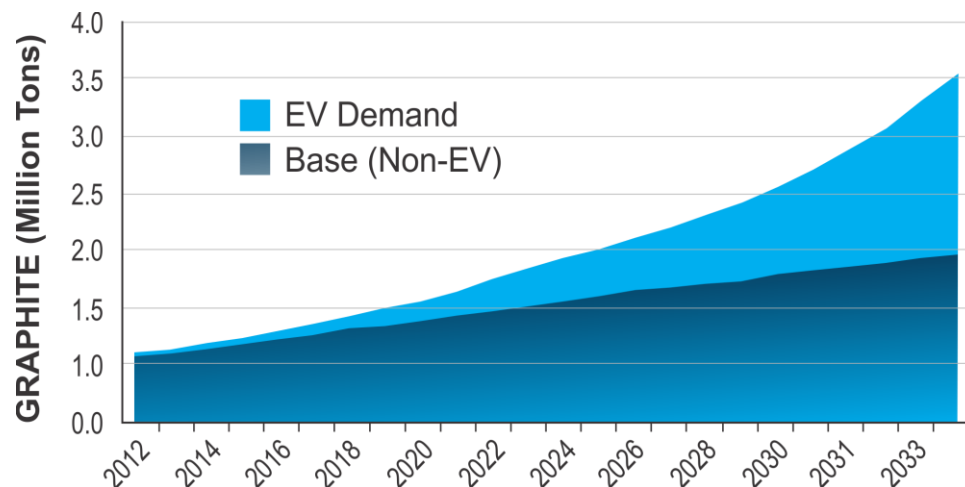


Why the Graphite Exposure?

\$12 BILLION GROWING MARKET

FORECAST DEMAND FOR
GRAPHITE IN ELECTRIC
VEHICLES TO INCREASE OVER
10 YEARS

80%



Disclaimer

COMPETENT PERSON STATEMENTS

Gustavo Delendatti for Authier - The information in this report that relates to Exploration Results is based on information compiled by Dr Gustavo Delendatti, a member of the Australian Institute of Geoscientists. Dr Delendatti is an independent consultant, and has sufficient experience which is relevant to the style of mineralisation and type of deposit under consideration and to the activity which it is undertaking to qualify as a Competent Person as defined in the JORC Code (2012 Edition) of the "Australasian Code for Reporting of Exploration Results, Mineral Resources and Ore Reserves." Dr Delendatti was responsible for the design and conduct of this exploration drilling campaign, supervised the preparation of the technical information in this release and has relevant experience and competence of the subject matter. Dr Delendatti, as competent person for this announcement, has consented to the inclusion of the information in the form and context in which it appears herein.

FORWARD LOOKING STATEMENTS

This presentation may contain certain forward looking statements. Such statements are only predictions, based on certain assumptions and involve known and unknown risks, uncertainties and other factors, many of which are beyond Sayona Limited's control. Actual events or results may differ materially from the events or results expected or implied in any forward looking statement. The inclusion of such statements should not be regarded as a representation, warranty or prediction with respect to the accuracy of the underlying assumptions or that any forward looking statements will be or are likely to be fulfilled. Sayona Limited undertakes no obligation to update any forward-looking statement to reflect events or circumstances after the date of this presentation (subject to securities exchange disclosure requirements). The information in this presentation does not take into account the objectives, financial situation or particular needs of any person. Nothing contained in this presentation constitutes investment, legal, tax or other advice.

Reference to Previous ASX Releases

This presentation refers to the following previous ASX releases:

- Authier JORC Resource, 7 July 2016
- Corkwood Drilling – Broad Zones of Mineralisation, 17 February 2016

The Company confirms that it is not aware of any new information or data that materially affects the information included in the original market announcement and all material assumptions and technical parameters continue to apply and have not materially changed. The Company confirms that the form and context in which the Competent Person's findings are presented have not been materially modified from the original market announcements.

ACN 091 951 978
Suite 68, 283 Given Terrace
Paddington, Queensland, 4064
Brisbane, Australia
Ph: +61 7 3369 7058
info@sayonamining.com.au

www.sayonamining.com.au



SAYONA
MINING LIMITED

