



QUARTERLY REPORT FOR PERIOD ENDED 30 June 2014

Securing SXG's future in project development

HIGHLIGHTS

CORPORATE

Funding

- Relationship with new cornerstone investor, TrailStone Group, announced on 8th July 2014
- Agreement to provide A\$60M debt funding and up to a A\$2M equity contribution
- Existing project pipeline to be fully funded
- Mt Boppy Gold Project to be in production within 12 months
- Placement: \$6M minimum to be made, \$3M commitments secured
- Existing shareholders to be provided an opportunity to participate in capital raising on similar terms
- Southern Cross positioned to seize further expansion opportunities

Asset value realisation and capital efficiency program

- Mt Holland tenements sold to Convergent Minerals Ltd (ASX:CVG) for \$0.2M
- Tenement rationalisation program progressing
- The Company is in advanced discussions on a proposal that will fully divest the Sandstone tenements, whilst retaining existing plant and infrastructure

Cash reserves conserved

- Cash at bank maintained at \$2.7M

PROJECT DEVELOPMENT

Mt Boppy Gold Project, NSW

- Mt Boppy currently prioritised ahead of Marda Gold Project to deliver quicker cash flow
- Permitting status refreshed enabling an accelerated development path
- Key mining contract discussions are well advanced

Marda Gold Project, WA

- Permitting proceeding following successful conclusion of court action which confirmed that the Marda project does not require a formal EPA assessment

EXPLORATION

- Auger drilling along the Evanston Shear Zone at the Marda project continued during the Quarter



CORPORATE

Corporate and project funding

The focus of activity during the June Quarter was the negotiation of a landmark A\$60 million debt package and the introduction of a new cornerstone investor to fully fund the company's existing project pipeline.

As announced on July 8, TrailStone Group, a \$1 billion international mining fund and an offshoot of the US\$26 billion Riverstone investment house, is to provide the debt package to Southern Cross in two tranches. The first tranche is a A\$25 million gold loan and the second is a vanilla line of credit of up to A\$35 million, to be drawn down in stages beginning in the first half of 2015. The maximum debt at any time is expected to peak at approximately A\$35 million.

SXG is simultaneously undertaking a recapitalisation, raising a minimum A\$6 million to strengthen its balance sheet and create a platform for future growth.

This includes a placement of shares to professional investors at a price of A\$0.01 per share, with one free attached option for each two shares issued (exercisable at no more than A\$0.014 per option).

Existing shareholders are to be offered the opportunity to participate in the capital raising on terms similar to the placement.

The finalisation of the transaction will see SXG emerge with a strong balance sheet, access to ample development funding, a strengthened share register and a solid pipeline of attractive development projects with the potential to deliver excellent returns to investors in a short time frame.

The Company intends to proceed initially with development of the Mt Boppy project, with gold production scheduled to commence within 12 months. Planning for development of the Marda project will occur in parallel to ensure that future value is maximised and optionality is maintained.

Key elements of the funding deal are included in the announcement of July 8, 2014.

For further information on TrailStone, visit www.trailstonegroup.com.

Asset rationalisation

Sandstone Project

During the June Quarter the Company made significant progress in its aim to rationalise its tenement portfolio through divestment of non-core exploration tenements, minimising future expenditure commitments.

Following completion of the marketing of the Sandstone tenement package, the Company is now in mature discussions with two parties to acquire separate components of the whole of the Sandstone tenement portfolio. While divesting ownership of the tenements, SXG will retain ownership of, and access to, the Sandstone plant and infrastructure, some of which is planned to be re-deployed to Marda.

These transactions will remove annual expenditure commitments of approximately \$1.9 million, freeing up this capital to apply to key project development activities.



Other WA tenements

During the June Quarter the Company accepted an offer to sell its Mt Holland tenements to Montague Resources Australia Pty Ltd, a subsidiary of ASX-listed Convergent Minerals (ASX:CVG). This will deliver \$0.2 million in proceeds but equally importantly remove further annual expenditure commitments of \$0.1 million.

The Company continues to maintain a significant tenement portfolio in the region with the potential to add to the existing resources and reserves at the Marda project, or to extend the life of the planned Marda infrastructure. As this portfolio is significant, the Company will maintain ongoing review of the commercial potential, with a view to ensuring that capital is allocated in a disciplined and prudent manner.

Cash Balance

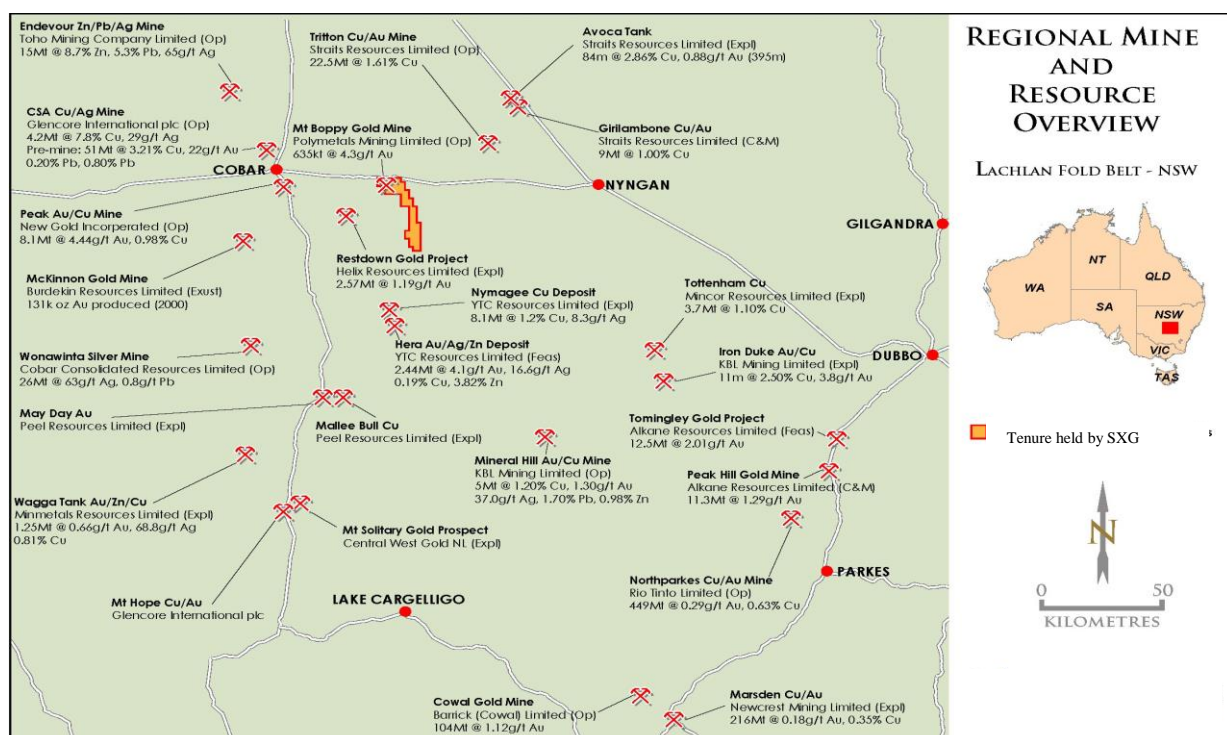
Cash at the end of the June Quarter was \$2.7 million. The Company retains a lean organisational structure and continues its conservative approach to activities and cash management. The predominate use of cash proceeds over the Quarter was in maintaining the broad exploration portfolio and supporting the corporate funding activities. The Company received a tax refund from the Australian Tax Office of \$1.2 million which principally funded the Quarter's activities.

PROJECT DEVELOPMENT

Mt Boppy Gold Project (100%)

The Mt Boppy Gold Project, and the wider Canbelego tenement package, comprises 210 km² of tenements in the highly prospective Lachlan Fold Belt of NSW (Figure 1). Polymetals Mining Ltd (merged with SXG in 2013) operated the Mt Boppy Gold Mine from 2001 to 2005 and conducted exploration on the project during 2011 and 2012 increasing the remaining mineral resource.

Figure 1: Lachlan Fold Belt Overview



**Feasibility Study**

In early 2013 Polymetals released a Feasibility Study which proposed to exploit the remaining gold ore reserves to recover in excess of 60,000oz from the existing pit (Figure 2) over a 2.5-year period at economic margins. Since merging with Polymetals, SXG has revised the development plans for the project including incremental optimisations to the pit design, mine schedule and process plant configuration with improved overall outcomes.

Figure 2: Aerial view of the Mt Boppy Gold Project

**Permitting**

Key licences have been approved for the project: Mining Lease ML 1681 and Environmental Protection Licence 20192 were granted in January 2013, and Development Consents were obtained for both the camp and the mine in 2012. A Mining Operations Plan (MOP) for the proposed project was approved in 2012, however the project was placed in care and maintenance before the required bonds were lodged.

The revised MOP will be submitted in due course. Other permits directly related to on ground activity will be applied for in the same period.

Companies have been contacted regarding a mining fleet supply and maintenance service agreement and discussions are well advanced. Selection of the preferred supplier will be made next quarter.

The Company believes the project remains well positioned to move quickly into development within 12 months.

Resources

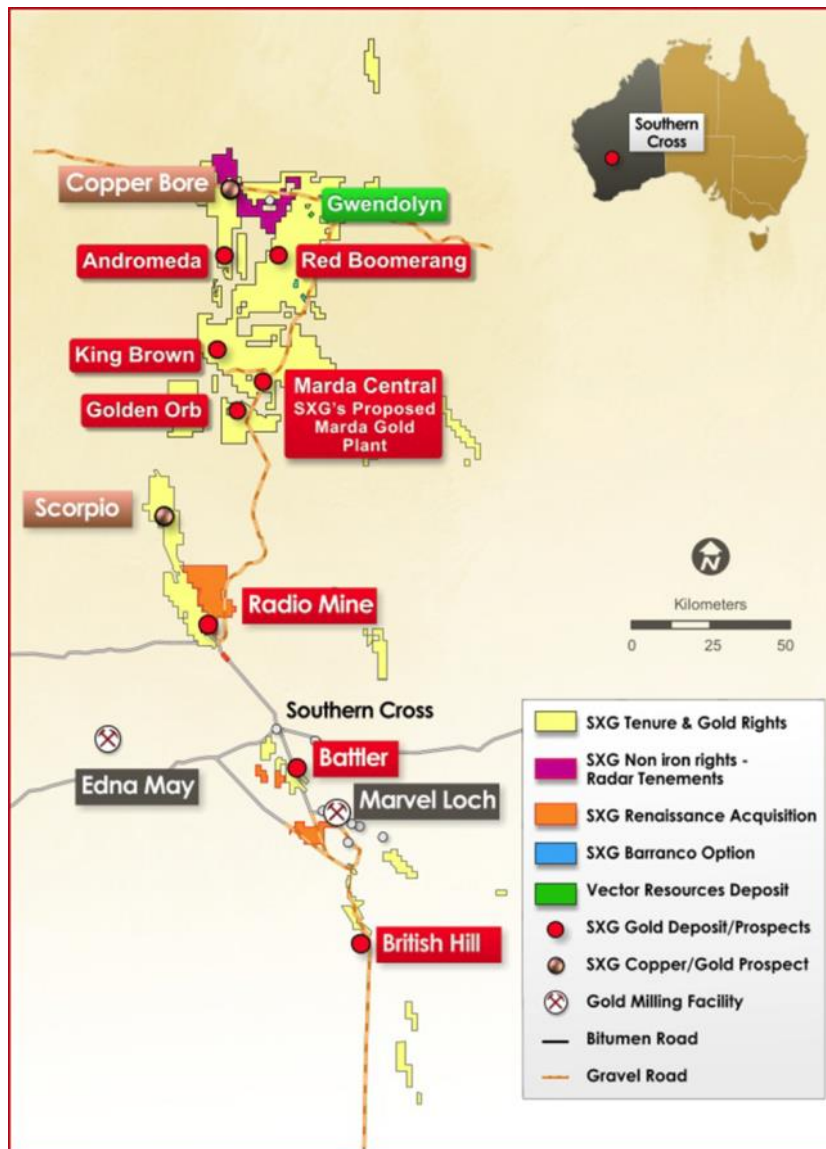
No additional work was done on extending the Mt Boppy resources during the period.



Marda Gold Project (100%)

SXG holds approximately 1,700 km² of tenements within the Marda-Diemals Greenstone Belt in the Southern Cross district of Western Australia (Figure 3). The Marda district remains a highly prospective gold province which has not yet been subjected to the intense exploration activity that has occurred in the Sandstone and Southern Cross districts.

Figure 3: Marda Gold Project Location and Tenements



Feasibility Study

In December 2013, SXG completed a revised Feasibility Study for Marda which demonstrated attractive potential returns from development of the project.

Permitting

A recent court decision confirming that the Marda development proposal does not require a formal EPA assessment was determined on June 18, 2014. This clears the way for review of the Mining Proposal (MP) and associated Mine Closure Plan (MCP) by the WA Department of Mining & Petroleum (DMP), as well as other usual development applications.



Resources

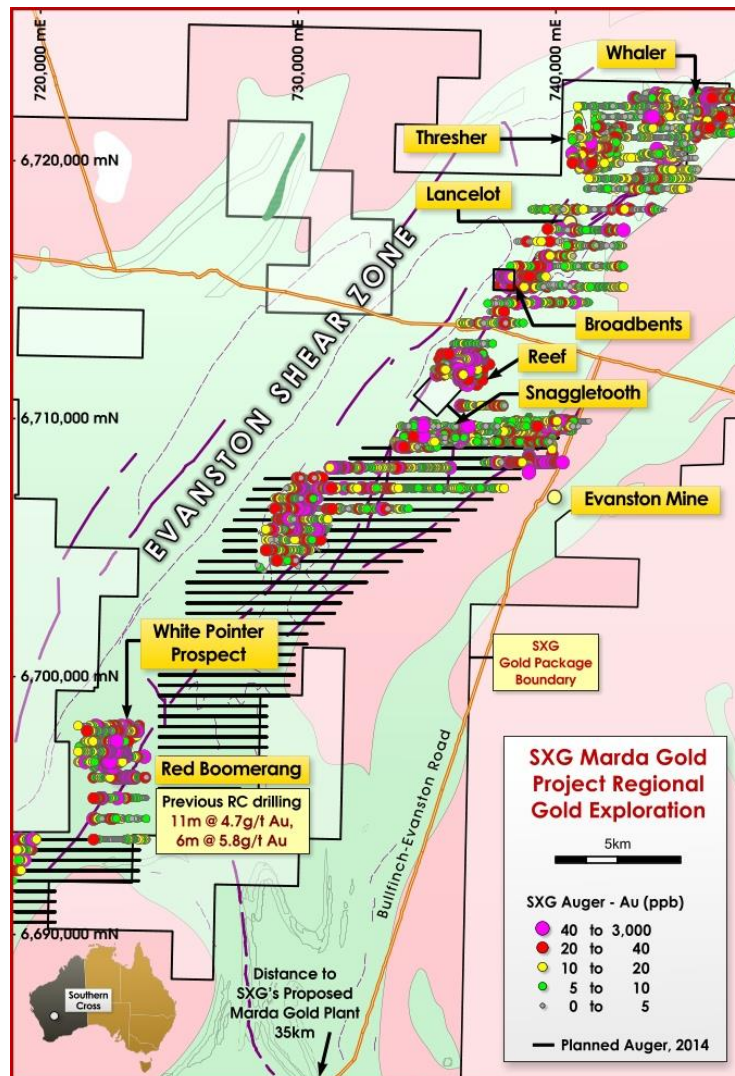
No additional work was done on extending the Marda resources during the period. There is potential to further extend the existing resources at Red Legs and Fiddleback to upgrade Inferred Resources to Indicated classification with further drilling. It is anticipated that the upgraded resources may be converted to reserves adding to the current reported Reserve of 35,000oz of gold.

EXPLORATION – Gold

Marda (100%)

Auger drilling along the Evanston Shear Zone focussed on infill sampling at promising areas northeast of SXG's Thresher target and southwest of the Reef target (Figure 4).

Figure 4: Evanston Shear exploration prospectivity



The infill sampling northeast of Thresher has defined a new auger geochemical target referred to as the Whaler Prospect. Auger anomalism at Whaler extends over 900m of strike (40ppb Au cutoff) and includes 4 results >100ppb Au (maximum 244ppb Au). A further 400m to the south a single anomalous result of 495 ppb Au also was returned.



The area south of Reef Prospect has returned a maximum of 210 ppb Au within a 40ppb anomaly which extends over 500m of strike. This target is now referred to as the Snaggletooth Prospect. It was partially tested by SXG in 2010 with three wide spaced RC holes, one of which returned 0.85 g/t Au over one metre. Further testing is required.

Confirmation was received during the quarter of the correct plotting of a prospecting licence covering the Broadbents Prospect. SXG has an option in place to explore the Broadbents licence which has returned up to 452ppb Au in auger samples.

Sampling will continue along the Evanston Shear Zone between the White Pointer and Reef prospects.

For associated JORC disclosure, refer Appendix 1.

Sandstone (100%)

Exploration work at Sandstone remained suspended while the Company focused on project development and corporate funding activities.

Mt Boppy (100%)

Exploration work at Mt Boppy and the Canbelego tenements remained at low levels while the Company focused on project development and corporate funding activities.

EXPLORATION – Base Metals

Copper Bore Base Metal Project (100%)

No new work was conducted at Copper Bore.

Western Areas NL Nickel Joint Venture (SXG 30% nickel interest, 100% non-nickel interest¹)

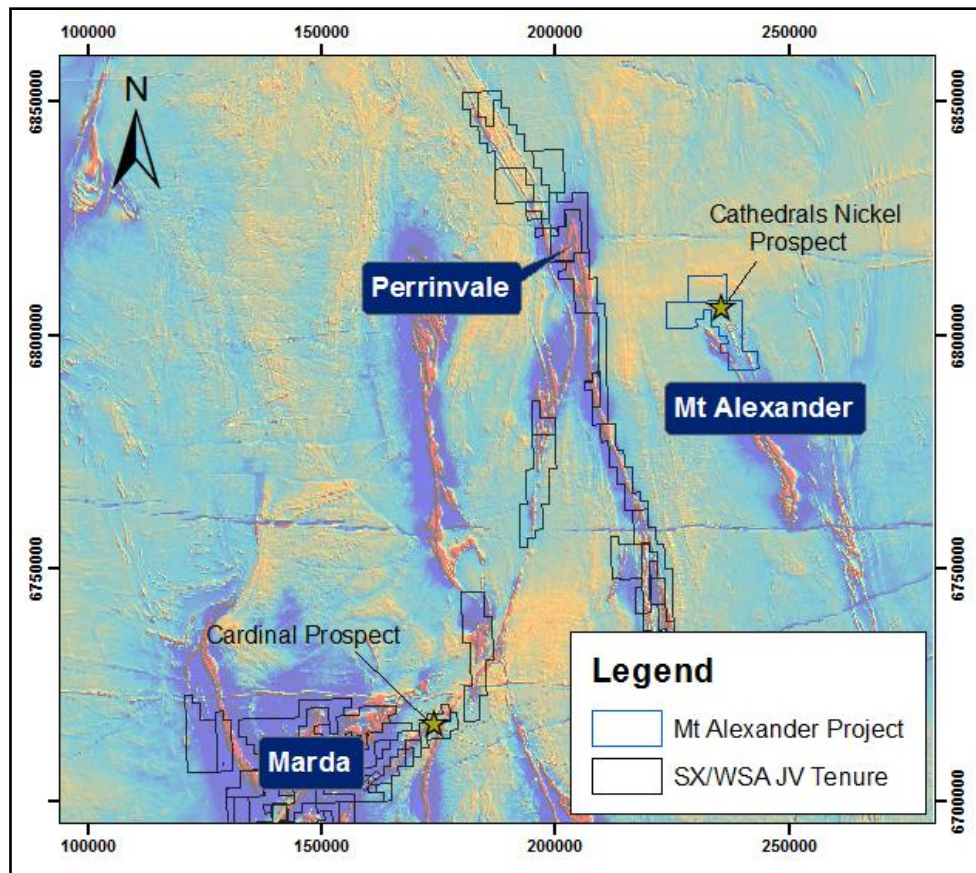
Joint Venture partner Western Areas NL (ASX:WSA) advise the following Quarterly activity.

Exploration work during the June Quarter was focused on quantifying the results from the last phase of exploration in the Marda area. Detailed geochemical analysis and petrographic work has indicated that the anomalous nickel is derived from the lateritic enrichment of high MgO, komatiitic ultramafics. Despite the high volume of ultramafics in the area, it is believed that the sampling program was sufficiently broad to screen for potential nickel sulphides and no further work is planned in the Marda area.

September Quarter activities will focus on the Perrinvale area (Figure 5). The Perrinvale area is relatively unexplored for nickel sulphides and early indications suggest that the stratigraphy could be similar to that as seen in the Mt Alexander Nickel Project (BHPB/WSA JV), where WMC/BHPB has intersected 14m @ 1.91% Ni and 0.75% Cu (including 4.1m @ 4.77% Ni and 1.68% Cu).

The initial work program at Perrinvale will consist of target generation activities including geochemical auger sampling and Air-core drilling. Any anomalous results will be followed up with RC drilling and surface EM programs.

¹ SXG retains 100% of non-nickel rights (other than iron ore) under its nickel rights agreement with Western Areas.

**Figure 5: Southern Cross JV Tenure and Exploration Focus Area**

Frank Terranova
Managing Director

– ENDS –

For further details, please contact
Frank Terranova, Managing Director, Southern Cross Goldfields Ltd
Telephone: +61 7 3236 2511, email frankt@scross.com.au
Refer to www.scross.com.au



APPENDIX 1

JORC TABLE 1

Section 1 Sampling Techniques and Data

Criteria	Explanation																																																																								
Sampling techniques	<p>Samples taken during the quarter were obtained from auger drilling using industry standard methods.</p> <p>Selective sampling of the pedigenic carbonate horizon was undertaken. Otherwise sample was taken from the auger refusal depth.</p> <p>As auger drilling results are used as a first pass indication of mineralisation only, no QAQC measures were implemented.</p>																																																																								
Drilling techniques	Auger drilling.																																																																								
Drill sample recovery	Not applicable to auger drilling.																																																																								
Logging	Not applicable to auger drilling.																																																																								
Sub-sampling techniques and sample preparation	<p>The sample medium was tested with 10% HCl to determine the pedigenic carbonate horizon which was preferentially taken. If no carbonate horizon was encountered, the sample was taken from the auger refusal depth.</p> <p>Samples were submitted to Ultratrace laboratories in Perth for preparation and analysis. Samples were dried, crushed and pulverised.</p>																																																																								
Quality of Assay data and Laboratory tests	<p>Samples are submitted to Ultratrace laboratories in Perth for preparation and analysis by aqua regia methods. Method codes used were AR001 and AR101, Induction Coupled Plasma Mass Spectrometry (ICP-MS) and Induction Coupled Plasma Atomic Emission Spectrometry (ICP-AES), respectively. Analytical methods by element and detection limits are outlined below:</p> <table><tr><th>Element</th><th>Method code</th><th>Detection limit</th><th>Element</th><th>Method code</th><th>Detection limit</th></tr><tr><td>Ag</td><td>AR102</td><td>0.05 ppm</td><td>Mg</td><td>AR101</td><td>0.01%</td></tr><tr><td>As</td><td>AR102</td><td>0.2 ppm</td><td>Mn</td><td>AR101</td><td>1 ppm</td></tr><tr><td>Au</td><td>AR001</td><td>0.5 ppb</td><td>Mo</td><td>AR102</td><td>1 ppm</td></tr><tr><td>Bi</td><td>AR102</td><td>0.02 ppm</td><td>Ni</td><td>AR102</td><td>1 ppm</td></tr><tr><td>Ca</td><td>AR101</td><td>100 ppm</td><td>Pb</td><td>AR102</td><td>1 ppm</td></tr><tr><td>Co</td><td>AR102</td><td>0.5 ppm</td><td>Pd</td><td>AR102</td><td>10 ppb</td></tr><tr><td>Cr</td><td>AR102</td><td>5 ppm</td><td>Pt</td><td>AR102</td><td>5 ppb</td></tr><tr><td>Cu</td><td>AR102</td><td>0.5 ppm</td><td>Te</td><td>AR102</td><td>0.02 ppm</td></tr><tr><td>Fe</td><td>AR101</td><td>0.01%</td><td>Ti</td><td>AR101</td><td>50 ppm</td></tr><tr><td>Hg</td><td>AR102</td><td>0.01 ppm</td><td>W</td><td>AR102</td><td>0.1 ppm</td></tr><tr><td>Li</td><td>AR102</td><td>0.1 ppm</td><td>Zn</td><td>AR102</td><td>1 ppm</td></tr></table>	Element	Method code	Detection limit	Element	Method code	Detection limit	Ag	AR102	0.05 ppm	Mg	AR101	0.01%	As	AR102	0.2 ppm	Mn	AR101	1 ppm	Au	AR001	0.5 ppb	Mo	AR102	1 ppm	Bi	AR102	0.02 ppm	Ni	AR102	1 ppm	Ca	AR101	100 ppm	Pb	AR102	1 ppm	Co	AR102	0.5 ppm	Pd	AR102	10 ppb	Cr	AR102	5 ppm	Pt	AR102	5 ppb	Cu	AR102	0.5 ppm	Te	AR102	0.02 ppm	Fe	AR101	0.01%	Ti	AR101	50 ppm	Hg	AR102	0.01 ppm	W	AR102	0.1 ppm	Li	AR102	0.1 ppm	Zn	AR102	1 ppm
Element	Method code	Detection limit	Element	Method code	Detection limit																																																																				
Ag	AR102	0.05 ppm	Mg	AR101	0.01%																																																																				
As	AR102	0.2 ppm	Mn	AR101	1 ppm																																																																				
Au	AR001	0.5 ppb	Mo	AR102	1 ppm																																																																				
Bi	AR102	0.02 ppm	Ni	AR102	1 ppm																																																																				
Ca	AR101	100 ppm	Pb	AR102	1 ppm																																																																				
Co	AR102	0.5 ppm	Pd	AR102	10 ppb																																																																				
Cr	AR102	5 ppm	Pt	AR102	5 ppb																																																																				
Cu	AR102	0.5 ppm	Te	AR102	0.02 ppm																																																																				
Fe	AR101	0.01%	Ti	AR101	50 ppm																																																																				
Hg	AR102	0.01 ppm	W	AR102	0.1 ppm																																																																				
Li	AR102	0.1 ppm	Zn	AR102	1 ppm																																																																				
Verification of Sampling and assaying	As auger drilling results are used as a first pass indication of mineralisation only, no verification of sampling and assaying was undertaken by independent or alternative company personnel.																																																																								
Location of data points	<p>Sample positions were determined using a Garmin 62S GPS.</p> <p>Grid system – UTM Zone 50J GDA94</p> <p>Topographic control not required as samples are treated as 2D point data.</p>																																																																								
Data spacing and distribution	A total of 362 samples were taken from auger holes drilled on 40m centres on lines between 100m and 400m apart.																																																																								



	Data spacing and distribution sufficient to establish an indication of mineralisation occurrence and continuity.
<i>Orientation of data in relation to geological structure</i>	Sampling data points aligned so that shortest distance between samples occurs roughly across strike of expected mineralisation trends.
<i>Sample security</i>	Samples were handled by auger drilling contractor.
<i>Audits or reviews</i>	None undertaken

JORC TABLE 1

Section 2 Reporting of Exploration Results

Criteria	Explanation
<i>Mineral tenement and land tenure status</i>	The Whaler prospect occurs on E77/1376, held by Polaris Metals Pty Ltd. SXG holds 100% non-Fe rights and 30% Ni rights. The Snaggletooth prospect lies within E77/1741 100% owned by SXG.
<i>Exploration done by other parties</i>	The general area has had previous exploration work conducted in the 1980's and 1990's for gold, and the 2000's for Fe.
<i>Geology</i>	Sheared metavolcanics and metasediments intruded by felsic and doleritic rocks.
<i>Drill hole Information</i>	Not material due to first pass / indicative nature of data.
<i>Data aggregation methods</i>	No data aggregation undertaken.
<i>Relationship between mineralisation widths and intercept lengths</i>	Not applicable to auger results.
<i>Diagrams</i>	See body of announcement.
<i>Balanced reporting</i>	Relation of anomalous samples to other samples is defined in diagram.
<i>Other substantive exploration data</i>	No other exploration results applicable.
<i>Further work</i>	Further auger drilling planned. See Figure 4 on Page 6 of announcement for planned lines.

Competent Persons Statement

Information in this Report relating to Mineral Resources and Exploration results has been compiled by Richard Simmons, Exploration Manager, Southern Cross Goldfields Ltd who has sufficient experience which is relevant to the type of deposit under consideration and to the activity which he is undertaking to qualify as a Competent Person as defined in the 2012 Edition of the 'Australasian Code for Reporting of Exploration Results, Mineral Resources and Ore Reserves'. Mr Simmons is a Member of the Australasian Institute of Mining and Metallurgy and has consented to the inclusion in this report of the matters compiled by him in the form and context in which they appear.



APPENDIX 2

Disclosures Required Under ASX Listing Rule 5.3.3

Mining tenements held at the end of the quarter and their location

State	Tenement Name	Tenement ID	Location	Interest	Holder	Comments
NSW	Canbelego	EL 5842	East of Cobar	100%	PMB	Granted
NSW	Mt Boppy Mine	GL 3255	East of Cobar	100%	PMB	Renewal granted 9/07/2014
NSW	Mt Boppy Mine	GL 5836	East of Cobar	100%	PMB	Renewal granted 9/07/2014
NSW	Mt Boppy Mine	GL 5848	East of Cobar	100%	PMB	Renewal granted 9/07/2014
NSW	Mt Boppy Mine	GL 5898	East of Cobar	100%	PMB	Renewal granted 9/07/2014
NSW	Mt Boppy Mine	ML 311	East of Cobar	100%	PMB	Renewal granted 9/07/2014
NSW	Mt Boppy Mine	MPL 240	East of Cobar	100%	PMB	Renewal granted 9/07/2014
NSW	Mt Boppy Mine	ML 1681	East of Cobar	100%	PMB	Granted
WA	Bullfinch	E77/1374	Bullfinch	0% (1)	POL	Granted
WA	Bullfinch	E77/1630	Bullfinch	100% (2)	SXG	Granted
WA	Bullfinch	E77/1692	Bullfinch	100%	GRY	Granted
WA	Bullfinch	E77/2092	Bullfinch	100% (2)	JAY	Granted
WA	Bullfinch	E77/2093	Bullfinch	100% (1)	GEO	Granted
WA	Bullfinch	E77/2094	Bullfinch	100% (1)	GEO	Granted
WA	Bullfinch	E77/2095	Bullfinch	100% (1)	GEO	Granted
WA	Bullfinch	E77/2096	Bullfinch	100%	GRE	Granted
WA	Bullfinch	E77/2146	Bullfinch	100% (2)	MAJ	Application
WA	Bullfinch	M77/1064	Bullfinch	85% (2)	SXG/POL	Granted
WA	Bullfinch	M77/1090	Bullfinch	85% (2)	SXG/POL	Granted
WA	Bullfinch	M77/1103	Bullfinch	85% (2)	SXG/POL	Granted
WA	Bullfinch	M77/1253	Bullfinch	0% (1)	POL	Granted
WA	Bullfinch	M77/228	Bullfinch	85% (2)	SXG/POL	Granted
WA	Bullfinch	P77/3614	Bullfinch	90%	GRY/OTH	Granted
WA	Bullfinch	P77/3628	Bullfinch	85% (2)	SXG/POL	Granted
WA	Bullfinch	P77/3629	Bullfinch	85% (2)	SXG/POL	Granted
WA	Bullfinch	P77/3630	Bullfinch	0% (1)	POL	Granted
WA	Bullfinch	P77/3631	Bullfinch	0% (1)	POL	Granted
WA	Bullfinch	P77/3632	Bullfinch	0% (1)	POL	Granted
WA	Bullfinch	P77/3633	Bullfinch	0% (1)	POL	Granted
WA	Bullfinch	P77/3634	Bullfinch	0% (1)	POL	Granted
WA	Bullfinch	P77/3635	Bullfinch	0% (1)	POL	Granted
WA	Bullfinch	P77/3636	Bullfinch	0% (1)	POL	Granted
WA	Bullfinch	P77/3665	Bullfinch	100%	GRY	Granted
WA	Bullfinch	P77/3666	Bullfinch	100%	GRY	Granted
WA	Bullfinch	P77/3970	Bullfinch	0% (1)	POL	Granted
WA	Bullfinch	P77/3996	Bullfinch	100% (2)	SXG	Granted
WA	Bullfinch	P77/3997	Bullfinch	100% (2)	SXG	Granted
WA	Bullfinch	P77/4223	Bullfinch	100%	SXG	Granted
WA	Bullfinch	P77/4224	Bullfinch	100%	SXG	Granted
WA	Bullfinch	P77/4225	Bullfinch	100%	SXG	Granted
WA	Bullfinch	P77/4232	Bullfinch	90% (3)	SXG	Granted
WA	Bullfinch	P77/4233	Bullfinch	90% (3)	SXG	Granted
WA	Bullfinch	P77/4234	Bullfinch	100%	SXG	Granted
WA	Johnston Range	E77/1280	Johnston Range	0% (4)	RAD	Granted
WA	Johnston Range	E77/1281	Johnston Range	0% (4)	RAD	Granted
WA	Johnston Range	E77/1807	Johnston Range	0% (4)	RAD	Granted
WA	Koolyanobbing	E77/2013	Koolyanobbing	100% (2)	SXG	Granted
WA	Marda	E77/1117	Marda	0% (2)	CLF	Granted
WA	Marda	E77/1164	Marda	100% (2)	SXG	Granted
WA	Marda	E77/1321	Marda	0% (2)	CLF	Granted
WA	Marda	E77/1322	Marda	0% (2)	CLF	Granted
WA	Marda	E77/1423	Marda	100% (2)	SXG	Granted
WA	Marda	E77/1459	Marda	0% (2)	POL	Granted
WA	Marda	E77/1462	Marda	0% (2)	POL	Granted
WA	Marda	E77/1474	Marda	100% (2)	SXG	Granted



State	Tenement Name	Tenement ID	Location	Interest	Holder	Comments
WA	Marda	E77/1477	Marda	100% (2)	SXG	Granted
WA	Marda	E77/1508	Marda	100% (5)	OTH	Application
WA	Marda	E77/1509	Marda	100% (5)	SXG	Granted
WA	Marda	E77/1649	Marda	100% (5)	SXG	Granted
WA	Marda	E77/1650	Marda	100% (2)	SXG	Granted
WA	Marda	E77/1653	Marda	100% (2)	SXG	Granted
WA	Marda	E77/1654	Marda	100% (2)	SXG	Granted
WA	Marda	E77/1657	Marda	100% (2)	SXG	Granted
WA	Marda	E77/1658	Marda	100% (2)	SXG	Granted
WA	Marda	E77/1659	Marda	100% (2)	SXG	Granted
WA	Marda	E77/1699	Marda	100% (2)	SXG	Granted
WA	Marda	E77/1728	Marda	100% (6)	SXG	Granted
WA	Marda	E77/1741	Marda	100% (2)	SXG	Granted
WA	Marda	E77/1742	Marda	100% (2)	SXG	Granted
WA	Marda	E77/1766	Marda	100% (2)	SXG	Granted
WA	Marda	E77/1791	Marda	100% (5)	SXG	Application
WA	Marda	E77/1803	Marda	100% (5)	SXG	Granted
WA	Marda	E77/1814	Marda	100% (5)	SXG	Granted
WA	Marda	E77/1817	Marda	100% (2)	SXG	Granted
WA	Marda	E77/1879	Marda	100% (2)	SXG	Granted
WA	Marda	E77/1880	Marda	100% (6)	SXG	Granted
WA	Marda	E77/1893	Marda	100% (2)	SXG	Granted
WA	Marda	E77/1899	Marda	100% (4)	SXG	Granted
WA	Marda	E77/1900	Marda	100% (4)	SXG	Granted
WA	Marda	E77/1911	Marda	100% (2)	SXG	Granted
WA	Marda	E77/1921	Marda	100% (4)	SXG	Granted
WA	Marda	E77/1976	Marda	100% (4)	SXG	Granted
WA	Marda	E77/1997	Marda	100% (2)	SXG	Granted
WA	Marda	E77/2018	Marda	100% (2)	SXG	Granted
WA	Marda	E77/2024	Marda	100% (2)	SXG	Granted
WA	Marda	E77/2025	Marda	100% (2)	SXG	Granted
WA	Marda	E77/2067	Marda	100% (2)	SXG	Granted
WA	Marda	E77/2081	Marda	100%	SXG	Granted
WA	Marda	E77/2105	Marda	100% (2)	JAY	Application
WA	Marda	E77/2106	Marda	100% (2)	JAY	Granted
WA	Marda	E77/2107	Marda	100% (2)	JAY	Granted
WA	Marda	E77/2109	Marda	100% (2)	GRE	Granted
WA	Marda	E77/2110	Marda	100% (2)	GRE	Granted
WA	Marda	E77/2124	Marda	100% (2)	SNH	Granted
WA	Marda	E77/2140	Marda	100% (2)	FOR	Granted
WA	Marda	E77/2141	Marda	100% (2)	SXG	Granted
WA	Marda	E77/2150	Marda	100% (2)	POL	Application
WA	Marda	E77/2171	Marda	100% (2)	FLA	Granted
WA	Marda	E77/2172	Marda	100% (2)	GRE	Granted
WA	Marda	E77/2240	Marda	100% (1)	RAD	Application
WA	Marda	G77/120	Marda	100%	SXG	Granted
WA	Marda	G77/35	Marda	100% (2)	SXG	Granted
WA	Marda	L77/238	Marda	100%	SXG	Granted
WA	Marda	L77/239	Marda	100%	SXG	Granted
WA	Marda	L77/240	Marda	100%	SXG	Granted
WA	Marda	L77/241	Marda	100%	SXG	Granted
WA	Marda	L77/242	Marda	100%	SXG	Granted
WA	Marda	L77/258	Marda	100%	SXG	Granted
WA	Marda	L77/259	Marda	100%	SXG	Granted
WA	Marda	L77/260	Marda	100%	SXG	Granted
WA	Marda	L77/261	Marda	100%	SXG	Granted
WA	Marda	L77/268	Marda	100%	SXG	Application
WA	Marda	M77/1264	Marda	0%(2)	SXG	Application
WA	Marda	M77/1271	Marda	100%	SXG	Application
WA	Marda	M77/1272	Marda	100%	SXG	Application
WA	Marda	M77/394	Marda	100% (2)	SXG	Granted
WA	Marda	M77/576	Marda	100% (5)	SXG	Granted



State	Tenement Name	Tenement ID	Location	Interest	Holder	Comments
WA	Marda	M77/646	Marda	100% (2)	SXG	Granted
WA	Marda	M77/824	Marda	100% (6)	SXG	Granted
WA	Marda	M77/931	Marda	100% (2)	SXG	Granted
WA	Marda	M77/962	Marda	100% (2)	SXG	Granted
WA	Marda	M77/973	Marda	0% (1)	POL	Granted
WA	Marda	P77/3412	Marda	100% (2)	SXG	Granted
WA	Marda	P77/3414	Marda	100% (2)	SXG	Granted
WA	Marda	P77/3460	Marda	100% (2)	SXG	Granted
WA	Marda	P77/3461	Marda	100% (2)	SXG	Granted
WA	Marda	P77/3462	Marda	100% (2)	SXG	Granted
WA	Marda	P77/3552	Marda	100% (2)	SXG	Granted
WA	Marda	P77/3801	Marda	100% (2)	SXG	Granted
WA	Marda	P77/3816	Marda	100% (2)	SXG	Granted
WA	Marda	P77/3817	Marda	100% (2)	SXG	Granted
WA	Marda	P77/3874	Marda	0% (10)	OTH	Granted
WA	Marda	P77/3898	Marda	100% (2)	SXG	Granted
WA	Marda	P77/3899	Marda	100% (2)	SXG	Granted
WA	Marda	P77/3901	Marda	100% (5)	SXG	Granted
WA	Marda	P77/3903	Marda	100% (2)	SXG	Granted
WA	Marda	P77/3936	Marda	100% (2)	SXG	Granted
WA	Marda	P77/3967	Marda	100% (2)	SXG	Granted
WA	Marda	P77/3968	Marda	0%(10)	OTH	Granted
WA	Marda	P77/3978	Marda	100% (2)	SXG	Granted
WA	Marda	P77/3979	Marda	100% (2)	SXG	Granted
WA	Marda	P77/3994	Marda	100% (2)	SXG	Granted
WA	Marda	P77/4019	Marda	0%(10)	OTH	Granted
WA	Marda	P77/4022	Marda	100% (6)	SXG	Granted
WA	Marda	P77/4027	Marda	0%(10)	OTH	Granted
WA	Marda	P77/4028	Marda	100% (2)	SXG	Granted
WA	Marda	P77/4029	Marda	100% (2)	SXG	Granted
WA	Marda	P77/4055	Marda	100% (5)	SXG	Granted
WA	Marda	P77/4061	Marda	0%(10)	OTH	Granted
WA	Marda	P77/4076	Marda	100% (2)	SXG	Granted
WA	Marda	P77/4077	Marda	100% (2)	SXG	Granted
WA	Marda	P77/4078	Marda	100% (2)	SXG	Granted
WA	Marda	P77/4101	Marda	100% (2)	SXG	Granted
WA	Marda	P77/4118	Marda	100%	SXG	Granted
WA	Marda	P77/4119	Marda	100%	SXG	Granted
WA	Marda	P77/4170	Marda	100% (2)	SXG	Granted
WA	Marda	P77/4171	Marda	100% (2)	SXG	Granted
WA	Marda	P77/4179	Marda	100% (2)	SXG	Granted
WA	Marda	P77/4180	Marda	100% (2)	SXG	Granted
WA	Marda	P77/4181	Marda	100% (2)	SXG	Granted
WA	Marda	P77/4193	Marda	100% (2)	SXG	Granted
WA	Marda	P77/4194	Marda	100% (2)	SXG	Granted
WA	Marda	P77/4195	Marda	100% (2)	SXG	Granted
WA	Marda	P77/4204	Marda	100% (2)	SXG	Granted
WA	Marda	P77/4221	Marda	100%	SXG	Granted
WA	Marda	P77/4222	Marda	100%	SXG	Granted
WA	Marda	P77/4226	Marda	100% (2)	SXG	Granted
WA	Marda	P77/4227	Marda	100% (2)	SXG	Granted
WA	Marda	P77/4228	Marda	100% (2)	SXG	Granted
WA	Marda	P77/4229	Marda	100% (2)	SXG	Granted
WA	Marda	P77/4230	Marda	100% (2)	SXG	Granted
WA	Marda	P77/4231	Marda	100% (2)	SXG	Granted
WA	Marda	P77/4238	Marda	100% (2)	SXG	Granted 07/05/2014
WA	Marda	P77/4239	Marda	100% (2)	SXG	Application
WA	Marda	P77/4240	Marda	100% (2)	SXG	Granted 07/05/2014
WA	Marda	R77/1	Marda	100%	SXG	Granted
WA	Marda	R77/2	Marda	100%	SXG	Granted
WA	Marda - Evanston	E77/1376	Marda - Evanston	0% (2)	POL	Granted
WA	Marda - Evanston	E77/1721	Marda - Evanston	0% (2)	POL	Application



State	Tenement Name	Tenement ID	Location	Interest	Holder	Comments
WA	Marda - Evanston	E77/2032	Marda - Evanston	0% (2)	POL	Granted
WA	Mount Holland	E77/1773	Mount Holland	100% (5)	SXG	Granted
WA	Mount Holland	E77/1775	Mount Holland	100% (5)	SXG	Granted
WA	Mount Holland	E77/1776	Mount Holland	100% (5)	SXG	Granted
WA	Mount Holland	E77/1777	Mount Holland	100% (5)	SXG	Granted
WA	Perrinvale	E29/564	Perrinvale	0% (2)	CLF	Granted
WA	Perrinvale	E29/593	Perrinvale	0% (2)	CLF	Granted
WA	Perrinvale	E29/653	Perrinvale	0% (2)	CLF	Granted
WA	Perrinvale	E29/655	Perrinvale	0% (2)	CLF	Granted
WA	Perrinvale	E29/793	Perrinvale	0% (4)	POL	Granted
WA	Perrinvale	E30/331	Perrinvale	0% (2)	CLF	Granted
WA	Perrinvale	E30/423	Perrinvale	0% (4)	POL	Granted
WA	Perrinvale	E30/424	Perrinvale	0% (4)	POL	Granted
WA	Perrinvale	P29/1922	Perrinvale	0% (2)	CLF	Granted
WA	Perrinvale	P29/1923	Perrinvale	0% (2)	CLF	Granted
WA	Perrinvale	P29/1926	Perrinvale	0% (2)	CLF	Granted
WA	Perrinvale	P29/1927	Perrinvale	0% (2)	CLF	Granted
WA	Perrinvale	P30/1011	Perrinvale	0% (2)	CLF	Granted
WA	Sandstone	E57/580	Sandstone	100%	SXG	Granted
WA	Sandstone	E57/583	Sandstone	100%	SXG	Granted
WA	Sandstone	E57/664	Sandstone	100%	SXG	Granted
WA	Sandstone	E57/703	Sandstone	100%	SXG	Granted
WA	Sandstone	E57/704	Sandstone	100%	SXG	Granted
WA	Sandstone	E57/808	Sandstone	100%	SXG	Granted
WA	Sandstone	M57/1	Sandstone	100%	SXG	Granted
WA	Sandstone	M57/128	Sandstone	100%	SXG	Granted
WA	Sandstone	M57/129	Sandstone	100%	SXG	Granted
WA	Sandstone	M57/130	Sandstone	100%	SXG	Granted
WA	Sandstone	M57/22	Sandstone	100%	SXG	Granted
WA	Sandstone	M57/239	Sandstone	50%	SXG/OTH	Granted
WA	Sandstone	M57/248	Sandstone	100%	SXG	Granted
WA	Sandstone	M57/266	Sandstone	100%	SXG	Granted
WA	Sandstone	M57/301	Sandstone	100%	SXG	Granted
WA	Sandstone	M57/40	Sandstone	100%	SXG	Granted
WA	Sandstone	M57/415	Sandstone	100%	SXG	Granted
WA	Sandstone	M57/416	Sandstone	100%	SXG	Granted
WA	Sandstone	M57/417	Sandstone	100%	SXG	Granted
WA	Sandstone	M57/439	Sandstone	100%	SXG	Granted
WA	Sandstone	M57/529	Sandstone	100%	SXG	Granted
WA	Sandstone	M57/530	Sandstone	100%	SXG	Granted
WA	Sandstone	M57/632	Sandstone	100%	SXG	Granted
WA	Sandstone	M57/68	Sandstone	100%	SXG	Granted
WA	Sandstone	M57/88	Sandstone	100%	SXG	Granted
WA	Sandstone	P57/1091	Sandstone	85%	SXG/ELX	Granted
WA	Sandstone	P57/1092	Sandstone	85%	SXG/ELX	Granted
WA	Sandstone	P57/1095	Sandstone	100%	SXG	Granted
WA	Sandstone	P57/1108	Sandstone	100%	SXG	Granted
WA	Sandstone	P57/1109	Sandstone	100%	SXG	Granted
WA	Sandstone	P57/1110	Sandstone	100%	SXG	Granted
WA	Sandstone	P57/1114	Sandstone	85%	SXG/ELX	Granted
WA	Sandstone	P57/1115	Sandstone	85%	SXG/ELX	Granted
WA	Sandstone	P57/1116	Sandstone	100%	SXG	Granted
WA	Sandstone	P57/1117	Sandstone	100%	SXG	Granted
WA	Sandstone	P57/1118	Sandstone	100%	SXG	Granted
WA	Sandstone	P57/1119	Sandstone	100%	SXG	Granted
WA	Sandstone	P57/1121	Sandstone	100%	SXG	Granted
WA	Sandstone	P57/1122	Sandstone	100%	SXG	Granted
WA	Sandstone	P57/1203	Sandstone	100%	SXG	Granted
WA	Sandstone	P57/1204	Sandstone	100%	SXG	Granted
WA	Sandstone	P57/1206	Sandstone	100%	SXG	Granted
WA	Sandstone	P57/1209	Sandstone	100%	SXG	Granted
WA	Sandstone	P57/1210	Sandstone	100%	SXG	Granted



State	Tenement Name	Tenement ID	Location	Interest	Holder	Comments
WA	Sandstone	P57/1220	Sandstone	100%	SXG	Granted
WA	Sandstone	P57/1221	Sandstone	100%	SXG	Granted
WA	Sandstone	P57/1222	Sandstone	100%	SXG	Granted
WA	Sandstone	P57/1224	Sandstone	100%	SXG	Granted
WA	Sandstone	P57/1225	Sandstone	100%	SXG	Granted
WA	Sandstone	P57/1229	Sandstone	100%	SXG	Granted
WA	Sandstone	P57/1230	Sandstone	100%	SXG	Granted
WA	Sandstone	P57/1246	Sandstone	100%	SXG	Granted
WA	Sandstone	P57/1252	Sandstone	100%	SXG	Granted
WA	Sandstone	P57/1253	Sandstone	100%	SXG	Granted
WA	Sandstone	P57/1254	Sandstone	100%	SXG	Granted
WA	Sandstone	P57/1255	Sandstone	100%	SXG	Granted
WA	Sandstone	G57/3	Sandstone	100%	SXG	Granted
WA	Sandstone	L57/10	Sandstone	100%	SXG	Granted
WA	Sandstone	L57/15	Sandstone	100%	SXG	Granted
WA	Sandstone	L57/22	Sandstone	100%	SXG	Granted
WA	Sandstone	L57/23	Sandstone	100%	SXG	Granted
WA	Sandstone	L57/24	Sandstone	100%	SXG	Granted
WA	Sandstone	L57/25	Sandstone	100%	SXG	Granted
WA	Sandstone	L57/26	Sandstone	100%	SXG	Granted
WA	Sandstone	L57/27	Sandstone	100%	SXG	Granted
WA	Sandstone	L57/33	Sandstone	100%	SXG	Granted
WA	Sandstone	L57/34	Sandstone	100%	SXG	Granted
WA	Southern Cross	E77/1726	Southern Cross	100% (5)	SXG	Granted
WA	Southern Cross	E77/1778	Southern Cross	100% (5)	SXG	Granted
WA	Southern Cross	E77/1790	Southern Cross	100% (5)	SXG	Granted
WA	Southern Cross	E77/1837	Southern Cross	100% (5)	SXG	Granted
WA	Southern Cross	E77/1938	Southern Cross	100% (5)	SXG	Granted
WA	Southern Cross	E77/1939	Southern Cross	100% (5)	SXG	Granted
WA	Southern Cross	E77/1965	Southern Cross	100% (5)	SXG	Granted
WA	Southern Cross	E77/2091	Southern Cross	100% (5)	JAY	Granted
WA	Southern Cross	L77/221	Southern Cross	100% (5)	SXG	Granted
WA	Southern Cross	L77/223	Southern Cross	100% (5)	SXG	Granted
WA	Southern Cross	L77/224	Southern Cross	100%	SXG	Granted
WA	Southern Cross	L77/225	Southern Cross	100%	SXG	Granted
WA	Southern Cross	M77/1025	Southern Cross	100% (5)	SXG	Granted
WA	Southern Cross	M77/1044	Southern Cross	100% (5)	SXG	Granted
WA	Southern Cross	M77/1102	Southern Cross	100% (5)	SXG	Granted
WA	Southern Cross	M77/1256	Southern Cross	100% (6)	SXG	Granted
WA	Southern Cross	M77/166	Southern Cross	100% (5)	SXG	Granted
WA	Southern Cross	M77/948	Southern Cross	90% (3)	SXG/BEL	Granted
WA	Southern Cross	P77/3645	Southern Cross	100% (5)	SXG	Granted
WA	Southern Cross	P77/4036	Southern Cross	100% (5)	SXG	Granted
WA	Southern Cross	P77/4037	Southern Cross	100% (5)	SXG	Granted
WA	Southern Cross	P77/4038	Southern Cross	100% (5)	SXG	Granted
WA	Southern Cross	P77/4079	Southern Cross	100% (2)	SXG	Granted
WA	Southern Cross	P77/4080	Southern Cross	100% (2)	SXG	Granted
WA	Southern Cross	P77/4103	Southern Cross	100% (5)	SXG	Granted
WA	Southern Cross	P77/4112	Southern Cross	100% (5)	SXG	Granted
WA	Southern Cross	P77/4113	Southern Cross	100% (5)	SXG	Granted
WA	Southern Cross	P77/4120	Southern Cross	100% (5)	SXG	Granted
WA	Southern Cross	P77/4121	Southern Cross	100% (5)	SXG	Granted
WA	Southern Cross	P77/4122	Southern Cross	100% (5)	SXG	Granted
WA	Southern Cross	P77/4124	Southern Cross	100% (5)	SXG	Granted
WA	Southern Cross	P77/4125	Southern Cross	100% (5)	SXG	Granted
WA	Southern Cross	P77/4150	Southern Cross	100% (5)	SXG	Granted
WA	Southern Cross	P77/4151	Southern Cross	100% (5)	SXG	Granted
WA	Southern Cross	P77/4152	Southern Cross	100% (5)	SXG	Granted
WA	Southern Cross	P77/4168	Southern Cross	100% (5)	SXG	Granted
WA	Southern Cross	P77/4169	Southern Cross	100% (5)	SXG	Granted
WA	Southern Cross	P77/4185	Southern Cross	100% (5)	SXG	Granted
WA	Southern Cross	P77/4196	Southern Cross	100% (5)	SXG	Granted



State	Tenement Name	Tenement ID	Location	Interest	Holder	Comments
WA	Southern Cross	P77/4197	Southern Cross	100% (5)	SXG	Granted
WA	Southern Cross	P77/4198	Southern Cross	100% (5)	SXG	Granted
WA	Southern Cross	P77/4199	Southern Cross	100% (5)	SXG	Granted
WA	Southern Cross	P77/4202	Southern Cross	100% (5)	SXG	Granted
WA	Southern Cross	P77/4203	Southern Cross	100% (5)	SXG	Granted
WA	Yilgarn	E77/1275	Yilgarn	0% (9)	POL	Granted
WA	Yilgarn	E77/1380	Yilgarn	0% (2)	POL	Granted
WA	Yilgarn	E77/1989	Yilgarn	0% (2)	POL	Granted
WA	Yilgarn	E77/1991	Yilgarn	0% (2)	POL	Granted
WA	Yilgarn	E77/2077	Yilgarn	0% (2)	POL	Granted

Mining tenements acquired or disposed of during the quarter and their location

State	Tenement Name	Tenement ID	Location	Interest	Holder	Comments
WA	Marda	E77/2171	Marda	100% (2)	FLA	Granted
WA	Marda	E77/2172	Marda	100% (2)	GRE	Granted
WA	Marda	E77/2240	Marda	100% (1)	RAD	Application
WA	Marda	P77/4238	Marda	100% (2)	SXG	Granted
WA	Marda	P77/4240	Marda	100% (2)	SXG	Granted
WA	Southern Cross	E77/1599	Southern Cross	100% (5)	SXG	Relinquished
WA	Southern Cross	E77/1996	Southern Cross	100% (2)	SXG	Relinquished
WA	Southern Cross	E77/2009	Southern Cross	100% (5)	MOT	Relinquished
WA	Southern Cross	P77/4187	Southern Cross	100% (5)	SXG	Relinquished
WA	Southern Cross	P77/4186	Southern Cross	100% (5)	SXG	Relinquished
WA	Southern Cross	P77/4016	Southern Cross	100% (5)	SXG	Relinquished
WA	Marda	E77/1427	Marda	100% (2)	SXG	Relinquished
WA	Southern Cross	E77/1233	Southern Cross	100% (5)	SXG	Relinquished
WA	Marda	E77/1295	Marda	0% (2)	CLF	Relinquished

Beneficial percentage interests held in farm in or farm out agreements at end of quarter

State	Project Name	Agreement Type	Parties	Interest held at end of quarter by exploration entity or child entity	Comments
-------	--------------	----------------	---------	---	----------

Nil

Beneficial percentage interests in farm in or farm out agreements acquired or disposed of during quarter

State	Project Name	Agreement Type	Parties	Interest held at end of quarter by exploration entity or child entity	Comments
-------	--------------	----------------	---------	---	----------

Nil

Notes – SXG Interests in Mineral Rights

- (1) SXG holds 100% of Non-Fe & Ni Rights
- (2) SXG holds 100% of Non- Fe Rights & 30% Ni Rights
- (3) SXG holds 90% of all Rights except 30% Ni Rights
- (4) SXG holds 100% of Non- Fe Rights
- (5) SXG holds 100% of all Rights and 30% of Ni Rights
- (6) same as (5)
- (7) SXG holds 80% of Non- Ni Rights & 30 % of Ni Rights
- (8) SXG holds 95% of Fe Rights & 100% of all other rights
- (9) SXG holds 100% of Non- Fe Rights - Non CESB. Polaris 100% of Non - Fe rights CESB
- (10) SXG – Option to Purchase 100%



EL	New South Wales	exploration licence
GL	New South Wales	gold lease
ML	New South Wales	mining lease
MPL	New South Wales	mining purposes lease
E	Western Australia	exploration licence
L	Western Australia	miscellaneous licence
M	Western Australia	mining lease
P	Western Australia	prospecting licence

BEL	Bellriver Pty Ltd
CLF	Cliffs Asia Pacific Iron Ore Pty Ltd
ELX	Elixir Holdings Pty Ltd
FLA	Flatrock Resources Pty Ltd
FOR	Formula Resources Pty Ltd
GEO	Geological Resource Solutions Pty Ltd
GRE	Greenwood Resources Pty Ltd
GRY	Gryphon Minerals Pty Ltd
JAY	Jayvee Resources Pty Ltd
MAJ	Majeka Minerals Pty Ltd
MOT	Motueka Investments Pty Ltd
OTH	Other non-corporate individuals
PMB	Polymetals (Mt Boppy) Ltd
POL	Polaris Metals Pty Ltd
RAD	Radar Resources Pty Ltd
SXG	Southern Cross Goldfields Ltd
