



**QUARTERLY REPORT FOR PERIOD ENDED
31 March 2014**

Driving towards project development

HIGHLIGHTS

PROJECT DEVELOPMENT

Funding

- RMB Australia Pty Ltd (RMB) debt facility reduced from \$7.0M to \$5.0M and extended for 6 months
- Substantial progress on financing activity to deliver funding for flagship projects and future growth
- Work continues to determine optimum sequencing of current SXG projects.

Marda Gold Project, WA

- Permitting advanced with Mining Proposal, Mine Closure Plan and Works Approval reviewed; approval pending completion of EPA Referral process
- EPA Referral decision of "Not Assessed" received from EPA on 11 March; single appeal currently being assessed by Appeals Convenor and expected to be concluded during the June 2014 Quarter.

Mt Boppy Gold Project, NSW

- A review of previously developed plans for the project continues to determine optimum value generating strategy for shareholders
- Permitting status refreshed and confirmed to enable accelerated development path.

CORPORATE

Asset rationalisation and capital management program

- Tenement rationalisation program progressing with various Expressions of Interest received
- PCF Capital Group mandated to divest SXG non-core assets – interested parties identified and discussions and documentation continue.

Cash reserves conserved

- Cash at bank \$2.9M following the \$2.0M repayment of the RMB debt facility.

EXPLORATION

- Auger drilling along the Evanston Shear Zone continued during the Quarter. Several areas anomalous in gold have been identified for follow up.



CORPORATE

Cash at the end of the March Quarter was \$2.9 million and the Company continues its conservative approach to activities and cash management. The predominate use of cash proceeds over the Quarter was the \$2.0M repayment of the RMB debt facility.

The asset review process that commenced last Quarter continues targeting divestment of non-core assets. Following the completion of SXG's withdrawal from various joint ventures and earn-in agreements in late 2013, the process is now focusing on:

- divestment of key asset groups, primarily the Sandstone exploration tenement package. The formal process seeking expressions of interest closed during the Quarter, and discussions with interested parties are in progress; and
- implementing a divestment program aimed at minimising expenditure commitments. This follows the recent completion of a review of the remaining comprehensive tenement package which has identified key tenement groups that can deliver value through supplementing the likely development projects.

Corporate and project funding

In order to efficiently conclude the broader funding proposals and various corporate initiatives under consideration, SXG agreed to repay \$2.0M in principal to RMB, and extend the remaining outstanding principal balance of \$5.0M for an additional 6 months.

To extend the RMB facility, in addition to an agency fee of A\$250,000 paid by SXG to RMB, SXG issued RMB with 63,775,510 options in SXG ("Options"). The key terms of the Options are:

- exercise period of 2 years from date of issue; and
- exercisable at \$0.02.

The terms and conditions applicable under the original RMB facility continue to apply to the amended RMB facility, including the application of commercial interest rates.

In 2013 SXG entered into a 12-month acquisition finance facility with RMB for the sum of \$7.0M. The proceeds were primarily utilised for the acquisition of the Sandstone Project and associated gold plant, which was earmarked for relocation to the Marda Gold Project, as well as working capital requirements.

SXG is in the final stage of assessing a number of project development funding proposals and corporate initiatives and will keep the market informed on these.

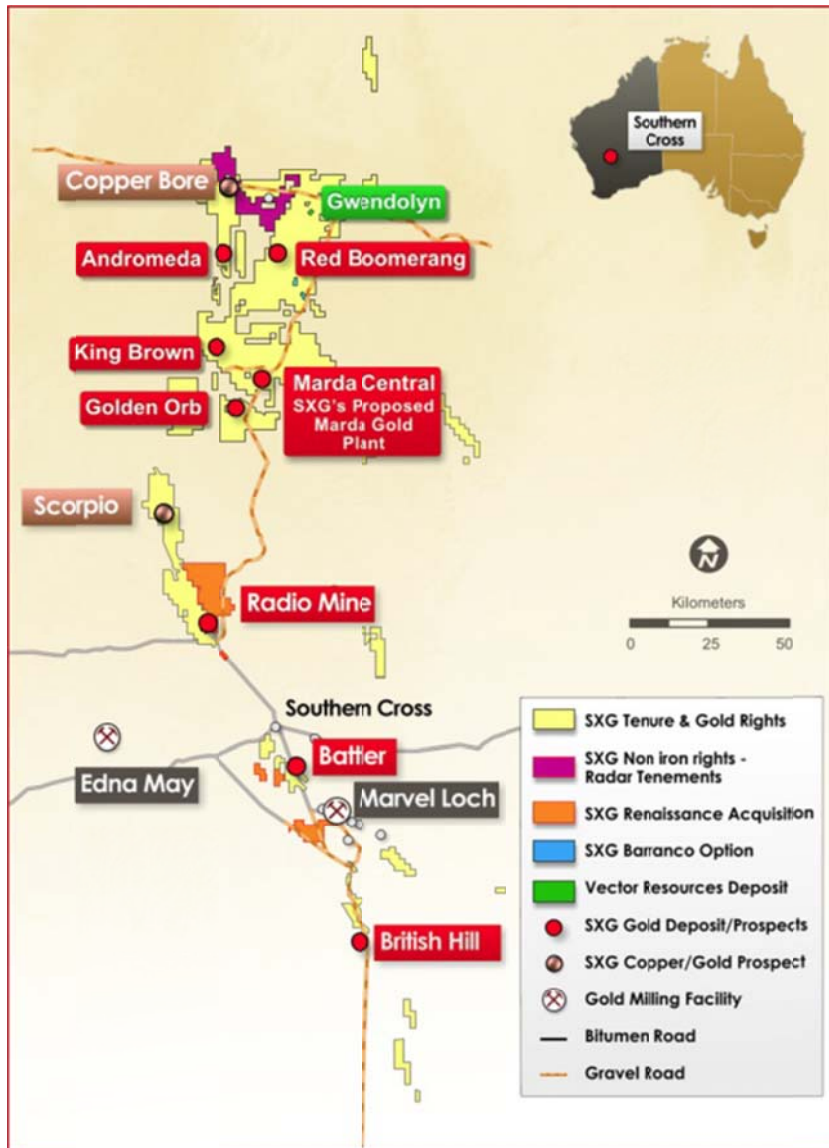
PROJECT DEVELOPMENT

Marda Gold Project (100%)

SXG holds approximately 1,700 km² of tenements within the Marda-Diemals Greenstone Belt in the Southern Cross district of Western Australia (Figure 1). The Marda district is a highly prospective gold province that has neither benefited from access to a modern processing facility nor from the intense exploration activity that has occurred in the Sandstone and Southern Cross districts.



Figure 1: Marda Gold Project Location and Tenements



Feasibility Study

In December 2013, SXG completed a revised Feasibility Study for Marda and this study remains valid subject to timely completion of project permitting.

Permitting

SXG submitted a Referral document to the WA Office of the Environmental Protection Authority (EPA) along with documentation supporting the Company's position that the project is not environmentally significant and accordingly, should not trigger a formal EPA assessment. The EPA concurred and advised their decision of "Not Assessed – Public Advice Given" on 11 March 2014. A single appeal was received by an NGO during the statutory appeal period arguing for further assessment and this is currently being processed by the Office of the Appeals Convenor. Completion of this process is possible within 30 to 60 days.

SXG also submitted a Mining Proposal and associated Mine Closure Plan to the WA Department of Mining & Petroleum (DMP) for consideration and approval in January 2014 and, following internal review and consultation with other departments, the DMP has subsequently advised their satisfaction with the submissions subject to resolution of a minor technical issue (more data requested). Formal approval of these permits is only possible once the EPA Referral and Appeals process has concluded.



Additionally, SXG submitted a Works Approval Application to the WA Department of Environmental Regulation (DER) for consideration and approval in January 2014. Approval of this permit is currently subject to the grant of a small additional miscellaneous lease (expected by end May) and conclusion of the EPA Referral and Appeals process.

Resources

No additional work was done on extending the Marda resources during the period. There is potential to further extend the existing resources at Red Legs/Die Hardy and to upgrade Inferred Resources to Indicated classification with further drilling. It is anticipated that the upgraded resources may be converted to reserves adding to the current reported Reserve of 35,000oz of gold.

Mt Boppy Gold Project (100%)

The Mt Boppy Gold Project, and the wider Canbelego tenement package, comprises 210 km² of tenements in the Lachlan Fold Belt of NSW. Polymetals Mining Ltd (merged with SXG in 2013) operated the Mt Boppy Gold Mine from 2001 to 2005 and conducted exploration on the project during 2011 and 2012 increasing the remaining mineral resource.

Feasibility Study

In early 2013 Polymetals released a Feasibility Study which proposed to exploit the remaining gold ore reserves to recover in excess of 60,000oz over a 2.5-year period at economic margins.

Since merging with Polymetals, SXG has revised the development plans for the project including incremental optimisations to the pit design, mine schedule and process plant configuration with improved overall outcomes.

Permitting

Key licences have been approved for the project: Mining Lease ML 1681 and Environmental Protection Licence 20192 were granted in January 2013, and Development Consents were obtained for both the camp and the mine in 2012. A Mining Operation Plan (MOP) for the proposed project was approved in 2012, however the project was placed in care and maintenance before the required bonds were lodged due to funding issues at the time.

The Company believes the project remains well positioned to move quickly into development if the current project sequencing review determines that financier preference is to extract quick returns from development of the Mt Boppy Project as a funding priority.

Resources

No additional work was done on extending the Mt Boppy resources during the period.

EXPLORATION – Gold

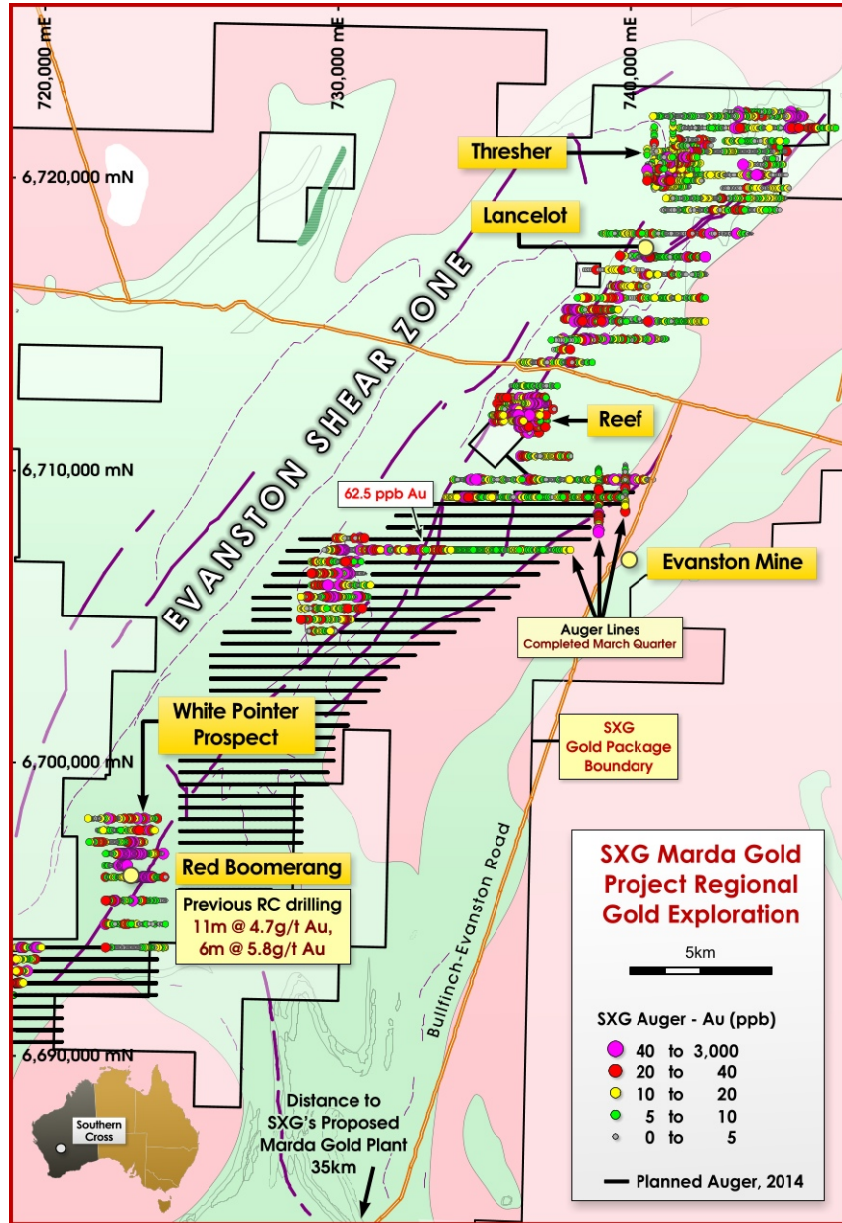
Marda (100%)

Auger drilling along the Evanston Shear Zone continued during January and February (refer Figure 2). The work concentrated on extensions to existing coverage and infill sampling south and south east of SXG's Reef Prospect. Several areas anomalous in gold have been identified for follow up. The most recent auger test has located +40ppb Au anomalism 2km south of previous sampling and recorded a maximum result of 62.5ppb Au. Infill sampling is required to define drill targets.



The emergence of new geochemical anomalies from the latest auger testing prompted rescheduling of the planned RAB program. This program will be implemented once further auger testing has been completed along the Evanston Shear.

Figure 2: Evanston Shear exploration prospectivity



Sandstone (100%)

Exploration work at Sandstone remained suspended while the Company focused on project development and corporate funding activities.

Mt Boppy (100%)

Exploration work at Mt Boppy and the Canbelego tenements remained at low levels while the Company focused on project development and corporate funding activities.



EXPLORATION – Base Metals

Copper Bore Base Metal Project (100%)

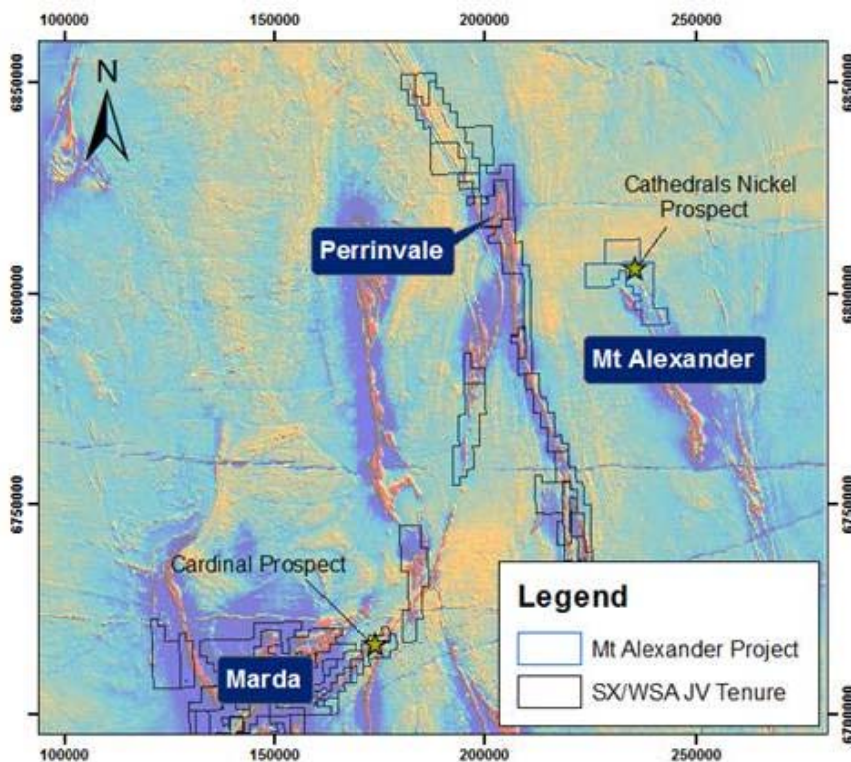
Exploration work at Copper Bore remained at low levels while the Company focused on project development and corporate funding activities.

Western Areas NL Nickel Joint Venture (SXG 30% nickel interest, 100% non-nickel interest¹)

An extensive stratigraphic drilling and auger geochemical sampling program was completed by Western Areas NL in the previous Quarters to determine the extent and type of ultramafic stratigraphy in the Marda area. During the course of this exploration, anomalous nickel values were returned from both the aircore (drill hole SXAC0058 intersected up to 0.26% Ni with 141ppm Cu at 38-39m depth) and auger drilling (coincident nickel and copper values up to 1,055ppm Ni and 261ppm Cu) at the Cardinal Prospect (Figure 3). Work is now underway to confirm the source of the anomalism.

Expected exploration activities during the June Quarter will include follow-up in the Cardinal area, as well initiation of work in the Perrinvale area. The Perrinvale area is located close to the Mt Alexander Nickel Project (BHPB/WSA JV), where previous drilling has intersected 14m @ 1.91% Ni and 0.75% Cu (including 4.1m @ 4.77% Ni and 1.68% Cu).

Figure 3: Southern Cross JV Tenure and Exploration Focus Area



Frank Terranova
Managing Director

– ENDS –

For further details, please contact
Frank Terranova, Managing Director, Southern Cross Goldfields Ltd
Telephone: +61 7 3236 2511, email frankt@scross.com.au
Refer to www.scross.com.au

¹ SXG retains 100% of non-nickel rights (other than iron ore) under its nickel rights agreement with Western Areas.



APPENDIX 1

Disclosures Required Under ASX Listing Rule 5.3.3

Mining tenements held at the end of the quarter and their location

State	Tenement Name	Tenement ID	Location	Interest	Holder	Comments
NSW	Canbelego	EL 5842	East of Cobar	100%	PMB	Granted
NSW	Mt Boppy Mine	GL 3255	East of Cobar	100%	PMB	Renewal pending
NSW	Mt Boppy Mine	GL 5836	East of Cobar	100%	PMB	Renewal pending
NSW	Mt Boppy Mine	GL 5848	East of Cobar	100%	PMB	Renewal pending
NSW	Mt Boppy Mine	GL 5898	East of Cobar	100%	PMB	Renewal pending
NSW	Mt Boppy Mine	ML 311	East of Cobar	100%	PMB	Renewal pending
NSW	Mt Boppy Mine	MPL 240	East of Cobar	100%	PMB	Renewal pending
NSW	Mt Boppy Mine	ML 1681	East of Cobar	100%	PMB	Granted
WA	Bullfinch	E77/1374	Bullfinch	0% (1)	POL	Granted
WA	Bullfinch	E77/1630	Bullfinch	100% (2)	SXG	Granted
WA	Bullfinch	E77/1692	Bullfinch	100%	GRY	Granted
WA	Bullfinch	E77/2092	Bullfinch	100% (2)	JAY	Granted
WA	Bullfinch	E77/2093	Bullfinch	100% (1)	GEO	Granted
WA	Bullfinch	E77/2094	Bullfinch	100% (1)	GEO	Granted
WA	Bullfinch	E77/2095	Bullfinch	100% (1)	GEO	Granted
WA	Bullfinch	E77/2096	Bullfinch	100%	GRE	Granted
WA	Bullfinch	E77/2146	Bullfinch	100% (2)	MAJ	Application
WA	Bullfinch	M77/1064	Bullfinch	85% (2)	SXG/POL	Granted
WA	Bullfinch	M77/1090	Bullfinch	85% (2)	SXG/POL	Granted
WA	Bullfinch	M77/1103	Bullfinch	85% (2)	SXG/POL	Granted
WA	Bullfinch	M77/1253	Bullfinch	0% (1)	POL	Granted
WA	Bullfinch	M77/228	Bullfinch	85% (2)	SXG/POL	Granted
WA	Bullfinch	P77/3614	Bullfinch	90%	GRY/OTH	Granted
WA	Bullfinch	P77/3628	Bullfinch	85% (2)	SXG/POL	Granted
WA	Bullfinch	P77/3629	Bullfinch	85% (2)	SXG/POL	Granted
WA	Bullfinch	P77/3630	Bullfinch	0% (1)	POL	Granted
WA	Bullfinch	P77/3631	Bullfinch	0% (1)	POL	Granted
WA	Bullfinch	P77/3632	Bullfinch	0% (1)	POL	Granted
WA	Bullfinch	P77/3633	Bullfinch	0% (1)	POL	Granted
WA	Bullfinch	P77/3634	Bullfinch	0% (1)	POL	Granted
WA	Bullfinch	P77/3635	Bullfinch	0% (1)	POL	Granted
WA	Bullfinch	P77/3636	Bullfinch	0% (1)	POL	Granted
WA	Bullfinch	P77/3665	Bullfinch	100%	GRY	Granted
WA	Bullfinch	P77/3666	Bullfinch	100%	GRY	Granted
WA	Bullfinch	P77/3970	Bullfinch	0% (1)	POL	Granted
WA	Bullfinch	P77/3996	Bullfinch	100% (2)	SXG	Granted
WA	Bullfinch	P77/3997	Bullfinch	100% (2)	SXG	Granted
WA	Bullfinch	P77/4223	Bullfinch	100%	SXG	Granted
WA	Bullfinch	P77/4224	Bullfinch	100%	SXG	Granted
WA	Bullfinch	P77/4225	Bullfinch	100%	SXG	Granted
WA	Bullfinch	P77/4232	Bullfinch	90% (3)	SXG	Granted
WA	Bullfinch	P77/4233	Bullfinch	90% (3)	SXG	Granted
WA	Johnston Range	E77/1280	Johnston Range	0% (4)	RAD	Granted
WA	Johnston Range	E77/1281	Johnston Range	0% (4)	RAD	Granted
WA	Johnston Range	E77/1807	Johnston Range	0% (4)	RAD	Granted
WA	Koolyanobbing	E77/2013	Koolyanobbing	100% (2)	SXG	Granted
WA	Marda	E77/1117	Marda	0% (2)	CLF	Granted
WA	Marda	E77/1164	Marda	100% (2)	SXG	Granted
WA	Marda	E77/1295	Marda	0% (2)	CLF	Granted
WA	Marda	E77/1321	Marda	0% (2)	CLF	Granted
WA	Marda	E77/1322	Marda	0% (2)	CLF	Granted
WA	Marda	E77/1423	Marda	100% (2)	SXG	Granted
WA	Marda	E77/1427	Marda	100% (2)	SXG	Granted
WA	Marda	E77/1459	Marda	0% (2)	POL	Granted
WA	Marda	E77/1462	Marda	0% (2)	POL	Granted



State	Tenement Name	Tenement ID	Location	Interest	Holder	Comments
WA	Marda	E77/1474	Marda	100% (2)	SXG	Granted
WA	Marda	E77/1477	Marda	100% (2)	SXG	Granted
WA	Marda	E77/1508	Marda	100% (5)	OTH	Application
WA	Marda	E77/1509	Marda	100% (5)	SXG	Granted
WA	Marda	E77/1649	Marda	100% (5)	SXG	Granted
WA	Marda	E77/1650	Marda	100% (2)	SXG	Granted
WA	Marda	E77/1653	Marda	100% (2)	SXG	Granted
WA	Marda	E77/1654	Marda	100% (2)	SXG	Granted
WA	Marda	E77/1657	Marda	100% (2)	SXG	Granted
WA	Marda	E77/1658	Marda	100% (2)	SXG	Granted
WA	Marda	E77/1659	Marda	100% (2)	SXG	Granted
WA	Marda	E77/1699	Marda	100% (2)	SXG	Granted
WA	Marda	E77/1728	Marda	100% (6)	SXG	Granted
WA	Marda	E77/1741	Marda	100% (2)	SXG	Granted
WA	Marda	E77/1742	Marda	100% (2)	SXG	Granted
WA	Marda	E77/1766	Marda	100% (2)	SXG	Granted
WA	Marda	E77/1791	Marda	100% (5)	SXG	Application
WA	Marda	E77/1803	Marda	100% (5)	SXG	Granted
WA	Marda	E77/1814	Marda	100% (5)	SXG	Granted
WA	Marda	E77/1817	Marda	100% (2)	SXG	Granted
WA	Marda	E77/1879	Marda	100% (2)	SXG	Granted
WA	Marda	E77/1880	Marda	100% (6)	SXG	Granted
WA	Marda	E77/1893	Marda	100% (2)	SXG	Granted
WA	Marda	E77/1899	Marda	100% (4)	SXG	Granted
WA	Marda	E77/1900	Marda	100% (4)	SXG	Granted
WA	Marda	E77/1911	Marda	100% (2)	SXG	Granted
WA	Marda	E77/1921	Marda	100% (4)	SXG	Granted
WA	Marda	E77/1976	Marda	100% (4)	SXG	Granted
WA	Marda	E77/1997	Marda	100% (2)	SXG	Granted
WA	Marda	E77/2018	Marda	100% (2)	SXG	Granted
WA	Marda	E77/2024	Marda	100% (2)	SXG	Granted
WA	Marda	E77/2025	Marda	100% (2)	SXG	Granted
WA	Marda	E77/2067	Marda	100% (2)	SXG	Granted
WA	Marda	E77/2081	Marda	100%	SXG	Granted
WA	Marda	E77/2105	Marda	100% (2)	JAY	Application
WA	Marda	E77/2106	Marda	100% (2)	JAY	Granted
WA	Marda	E77/2107	Marda	100% (2)	JAY	Granted
WA	Marda	E77/2109	Marda	100% (2)	GRE	Granted
WA	Marda	E77/2110	Marda	100% (2)	GRE	Granted
WA	Marda	E77/2124	Marda	100% (2)	SNH	Granted
WA	Marda	E77/2140	Marda	100% (2)	FOR	Granted
WA	Marda	E77/2141	Marda	100% (2)	SXG	Granted
WA	Marda	E77/2150	Marda	100% (2)	POL	Application
WA	Marda	G77/120	Marda	100%	SXG	Granted
WA	Marda	G77/35	Marda	100% (2)	SXG	Granted
WA	Marda	L77/238	Marda	100%	SXG	Granted
WA	Marda	L77/239	Marda	100%	SXG	Granted
WA	Marda	L77/240	Marda	100%	SXG	Granted
WA	Marda	L77/241	Marda	100%	SXG	Granted
WA	Marda	L77/242	Marda	100%	SXG	Granted
WA	Marda	L77/258	Marda	100%	SXG	Granted
WA	Marda	L77/259	Marda	100%	SXG	Granted
WA	Marda	L77/260	Marda	100%	SXG	Granted
WA	Marda	L77/261	Marda	100%	SXG	Granted
WA	Marda	L77/268	Marda	100%	SXG	Application
WA	Marda	M77/1264	Marda	0%(2)	SXG	Application
WA	Marda	M77/1271	Marda	100%	SXG	Application
WA	Marda	M77/1272	Marda	100%	SXG	Application
WA	Marda	M77/394	Marda	100% (2)	SXG	Granted
WA	Marda	M77/576	Marda	100% (5)	SXG	Granted
WA	Marda	M77/646	Marda	100% (2)	SXG	Granted
WA	Marda	M77/824	Marda	100% (6)	SXG	Granted



State	Tenement Name	Tenement ID	Location	Interest	Holder	Comments
WA	Marda	M77/931	Marda	100% (2)	SXG	Granted
WA	Marda	M77/962	Marda	100% (2)	SXG	Granted
WA	Marda	M77/973	Marda	0% (1)	POL	Granted
WA	Marda	P77/3412	Marda	100% (2)	SXG	Granted
WA	Marda	P77/3414	Marda	100% (2)	SXG	Granted
WA	Marda	P77/3460	Marda	100% (2)	SXG	Granted
WA	Marda	P77/3461	Marda	100% (2)	SXG	Granted
WA	Marda	P77/3462	Marda	100% (2)	SXG	Granted
WA	Marda	P77/3552	Marda	100% (2)	SXG	Granted
WA	Marda	P77/3801	Marda	100% (2)	SXG	Granted
WA	Marda	P77/3816	Marda	100% (2)	SXG	Granted
WA	Marda	P77/3817	Marda	100% (2)	SXG	Granted
WA	Marda	P77/3874	Marda	0% (10)	OTH	Granted
WA	Marda	P77/3898	Marda	100% (2)	SXG	Granted
WA	Marda	P77/3899	Marda	100% (2)	SXG	Granted
WA	Marda	P77/3901	Marda	100% (5)	SXG	Granted
WA	Marda	P77/3903	Marda	100% (2)	SXG	Granted
WA	Marda	P77/3936	Marda	100% (2)	SXG	Granted
WA	Marda	P77/3967	Marda	100% (2)	SXG	Granted
WA	Marda	P77/3968	Marda	0%(10)	OTH	Granted
WA	Marda	P77/3978	Marda	100% (2)	SXG	Granted
WA	Marda	P77/3979	Marda	100% (2)	SXG	Granted
WA	Marda	P77/3994	Marda	100% (2)	SXG	Granted
WA	Marda	P77/4019	Marda	0%(10)	OTH	Granted
WA	Marda	P77/4022	Marda	100% (6)	SXG	Granted
WA	Marda	P77/4027	Marda	0%(10)	OTH	Granted
WA	Marda	P77/4028	Marda	100% (2)	SXG	Granted
WA	Marda	P77/4029	Marda	100% (2)	SXG	Granted
WA	Marda	P77/4055	Marda	100% (5)	SXG	Granted
WA	Marda	P77/4061	Marda	0%(10)	OTH	Granted
WA	Marda	P77/4076	Marda	100% (2)	SXG	Granted
WA	Marda	P77/4077	Marda	100% (2)	SXG	Granted
WA	Marda	P77/4078	Marda	100% (2)	SXG	Granted
WA	Marda	P77/4101	Marda	100% (2)	SXG	Granted
WA	Marda	P77/4118	Marda	100%	SXG	Granted
WA	Marda	P77/4119	Marda	100%	SXG	Granted
WA	Marda	P77/4170	Marda	100% (2)	SXG	Granted
WA	Marda	P77/4171	Marda	100% (2)	SXG	Granted
WA	Marda	P77/4179	Marda	100% (2)	SXG	Granted
WA	Marda	P77/4180	Marda	100% (2)	SXG	Granted
WA	Marda	P77/4181	Marda	100% (2)	SXG	Granted
WA	Marda	P77/4193	Marda	100% (2)	SXG	Granted
WA	Marda	P77/4194	Marda	100% (2)	SXG	Granted
WA	Marda	P77/4195	Marda	100% (2)	SXG	Granted
WA	Marda	P77/4204	Marda	100% (2)	SXG	Granted
WA	Marda	P77/4221	Marda	100%	SXG	Granted
WA	Marda	P77/4222	Marda	100%	SXG	Granted
WA	Marda	P77/4226	Marda	100% (2)	SXG	Granted
WA	Marda	P77/4227	Marda	100% (2)	SXG	Granted
WA	Marda	P77/4228	Marda	100% (2)	SXG	Granted
WA	Marda	P77/4229	Marda	100% (2)	SXG	Granted
WA	Marda	P77/4230	Marda	100% (2)	SXG	Granted
WA	Marda	P77/4231	Marda	100% (2)	SXG	Granted
WA	Marda	P77/4238	Marda	100% (2)	SXG	Application
WA	Marda	P77/4239	Marda	100% (2)	SXG	Application
WA	Marda	P77/4240	Marda	100% (2)	SXG	Application
WA	Marda	R77/1	Marda	100%	SXG	Granted
WA	Marda	R77/2	Marda	100%	SXG	Granted
WA	Marda - Evanston	E77/1376	Marda - Evanston	0% (2)	POL	Granted
WA	Marda - Evanston	E77/1721	Marda - Evanston	0% (2)	POL	Application
WA	Marda - Evanston	E77/2032	Marda - Evanston	0% (2)	POL	Granted
WA	Mount Holland	E77/1773	Mount Holland	100% (5)	SXG	Granted



State	Tenement Name	Tenement ID	Location	Interest	Holder	Comments
WA	Mount Holland	E77/1775	Mount Holland	100% (5)	SXG	Granted
WA	Mount Holland	E77/1776	Mount Holland	100% (5)	SXG	Granted
WA	Mount Holland	E77/1777	Mount Holland	100% (5)	SXG	Granted
WA	Perrinvale	E29/564	Perrinvale	0% (2)	CLF	Granted
WA	Perrinvale	E29/593	Perrinvale	0% (2)	CLF	Granted
WA	Perrinvale	E29/653	Perrinvale	0% (2)	CLF	Granted
WA	Perrinvale	E29/655	Perrinvale	0% (2)	CLF	Granted
WA	Perrinvale	E29/793	Perrinvale	0% (4)	POL	Granted
WA	Perrinvale	E30/331	Perrinvale	0% (2)	CLF	Granted
WA	Perrinvale	E30/423	Perrinvale	0% (4)	POL	Granted
WA	Perrinvale	E30/424	Perrinvale	0% (4)	POL	Granted
WA	Perrinvale	P29/1922	Perrinvale	0% (2)	CLF	Granted
WA	Perrinvale	P29/1923	Perrinvale	0% (2)	CLF	Granted
WA	Perrinvale	P29/1926	Perrinvale	0% (2)	CLF	Granted
WA	Perrinvale	P29/1927	Perrinvale	0% (2)	CLF	Granted
WA	Perrinvale	P30/1011	Perrinvale	0% (2)	CLF	Granted
WA	Sandstone	E57/580	Sandstone	100%	SXG	Granted
WA	Sandstone	E57/583	Sandstone	100%	SXG	Granted
WA	Sandstone	E57/664	Sandstone	100%	SXG	Granted
WA	Sandstone	E57/703	Sandstone	100%	SXG	Granted
WA	Sandstone	E57/704	Sandstone	100%	SXG	Granted
WA	Sandstone	E57/808	Sandstone	100%	SXG	Granted
WA	Sandstone	M57/1	Sandstone	100%	SXG	Granted
WA	Sandstone	M57/128	Sandstone	100%	SXG	Granted
WA	Sandstone	M57/129	Sandstone	100%	SXG	Granted
WA	Sandstone	M57/130	Sandstone	100%	SXG	Granted
WA	Sandstone	M57/22	Sandstone	100%	SXG	Granted
WA	Sandstone	M57/239	Sandstone	50%	SXG/OTH	Granted
WA	Sandstone	M57/248	Sandstone	100%	SXG	Granted
WA	Sandstone	M57/266	Sandstone	100%	SXG	Granted
WA	Sandstone	M57/301	Sandstone	100%	SXG	Granted
WA	Sandstone	M57/40	Sandstone	100%	SXG	Granted
WA	Sandstone	M57/415	Sandstone	100%	SXG	Granted
WA	Sandstone	M57/416	Sandstone	100%	SXG	Granted
WA	Sandstone	M57/417	Sandstone	100%	SXG	Granted
WA	Sandstone	M57/439	Sandstone	100%	SXG	Granted
WA	Sandstone	M57/529	Sandstone	100%	SXG	Granted
WA	Sandstone	M57/530	Sandstone	100%	SXG	Granted
WA	Sandstone	M57/632	Sandstone	100%	SXG	Granted
WA	Sandstone	M57/68	Sandstone	100%	SXG	Granted
WA	Sandstone	M57/88	Sandstone	100%	SXG	Granted
WA	Sandstone	P57/1091	Sandstone	85%	SXG/ELX	Granted
WA	Sandstone	P57/1092	Sandstone	85%	SXG/ELX	Granted
WA	Sandstone	P57/1095	Sandstone	100%	SXG	Granted
WA	Sandstone	P57/1108	Sandstone	100%	SXG	Granted
WA	Sandstone	P57/1109	Sandstone	100%	SXG	Granted
WA	Sandstone	P57/1110	Sandstone	100%	SXG	Granted
WA	Sandstone	P57/1114	Sandstone	85%	SXG/ELX	Granted
WA	Sandstone	P57/1115	Sandstone	85%	SXG/ELX	Granted
WA	Sandstone	P57/1116	Sandstone	100%	SXG	Granted
WA	Sandstone	P57/1117	Sandstone	100%	SXG	Granted
WA	Sandstone	P57/1118	Sandstone	100%	SXG	Granted
WA	Sandstone	P57/1119	Sandstone	100%	SXG	Granted
WA	Sandstone	P57/1121	Sandstone	100%	SXG	Granted
WA	Sandstone	P57/1122	Sandstone	100%	SXG	Granted
WA	Sandstone	P57/1203	Sandstone	100%	SXG	Granted
WA	Sandstone	P57/1204	Sandstone	100%	SXG	Granted
WA	Sandstone	P57/1206	Sandstone	100%	SXG	Granted
WA	Sandstone	P57/1209	Sandstone	100%	SXG	Granted
WA	Sandstone	P57/1210	Sandstone	100%	SXG	Granted
WA	Sandstone	P57/1220	Sandstone	100%	SXG	Granted
WA	Sandstone	P57/1221	Sandstone	100%	SXG	Granted



State	Tenement Name	Tenement ID	Location	Interest	Holder	Comments
WA	Sandstone	P57/1222	Sandstone	100%	SXG	Granted
WA	Sandstone	P57/1224	Sandstone	100%	SXG	Granted
WA	Sandstone	P57/1225	Sandstone	100%	SXG	Granted
WA	Sandstone	P57/1229	Sandstone	100%	SXG	Granted
WA	Sandstone	P57/1230	Sandstone	100%	SXG	Granted
WA	Sandstone	P57/1246	Sandstone	100%	SXG	Granted
WA	Sandstone	P57/1252	Sandstone	100%	SXG	Granted
WA	Sandstone	P57/1253	Sandstone	100%	SXG	Granted
WA	Sandstone	P57/1254	Sandstone	100%	SXG	Granted
WA	Sandstone	P57/1255	Sandstone	100%	SXG	Granted
WA	Sandstone	G57/3	Sandstone	100%	SXG	Granted
WA	Sandstone	L57/10	Sandstone	100%	SXG	Granted
WA	Sandstone	L57/15	Sandstone	100%	SXG	Granted
WA	Sandstone	L57/22	Sandstone	100%	SXG	Granted
WA	Sandstone	L57/23	Sandstone	100%	SXG	Granted
WA	Sandstone	L57/24	Sandstone	100%	SXG	Granted
WA	Sandstone	L57/25	Sandstone	100%	SXG	Granted
WA	Sandstone	L57/26	Sandstone	100%	SXG	Granted
WA	Sandstone	L57/27	Sandstone	100%	SXG	Granted
WA	Sandstone	L57/33	Sandstone	100%	SXG	Granted
WA	Sandstone	L57/34	Sandstone	100%	SXG	Granted
WA	Southern Cross	E77/1233	Southern Cross	100% (5)	SXG	Granted
WA	Southern Cross	E77/1599	Southern Cross	100% (5)	SXG	Granted
WA	Southern Cross	E77/1726	Southern Cross	100% (5)	SXG	Granted
WA	Southern Cross	E77/1778	Southern Cross	100% (5)	SXG	Granted
WA	Southern Cross	E77/1790	Southern Cross	100% (5)	SXG	Granted
WA	Southern Cross	E77/1837	Southern Cross	100% (5)	SXG	Granted
WA	Southern Cross	E77/1938	Southern Cross	100% (5)	SXG	Granted
WA	Southern Cross	E77/1939	Southern Cross	100% (5)	SXG	Granted
WA	Southern Cross	E77/1965	Southern Cross	100% (5)	SXG	Granted
WA	Southern Cross	E77/1996	Southern Cross	100% (2)	SXG	Granted
WA	Southern Cross	E77/2009	Southern Cross	100% (5)	MOT	Granted
WA	Southern Cross	E77/2091	Southern Cross	100% (5)	JAY	Granted
WA	Southern Cross	L77/221	Southern Cross	100% (5)	SXG	Granted
WA	Southern Cross	L77/223	Southern Cross	100% (5)	SXG	Granted
WA	Southern Cross	L77/224	Southern Cross	100%	SXG	Granted
WA	Southern Cross	L77/225	Southern Cross	100%	SXG	Granted
WA	Southern Cross	M77/1025	Southern Cross	100% (5)	SXG	Granted
WA	Southern Cross	M77/1044	Southern Cross	100% (5)	SXG	Granted
WA	Southern Cross	M77/1102	Southern Cross	100% (5)	SXG	Granted
WA	Southern Cross	M77/1256	Southern Cross	100% (6)	SXG	Granted
WA	Southern Cross	M77/166	Southern Cross	100% (5)	SXG	Granted
WA	Southern Cross	M77/948	Southern Cross	90% (3)	SXG/BEL	Granted
WA	Southern Cross	P77/3645	Southern Cross	100% (5)	SXG	Granted
WA	Southern Cross	P77/4016	Southern Cross	100% (5)	SXG	Granted
WA	Southern Cross	P77/4036	Southern Cross	100% (5)	SXG	Granted
WA	Southern Cross	P77/4037	Southern Cross	100% (5)	SXG	Granted
WA	Southern Cross	P77/4038	Southern Cross	100% (5)	SXG	Granted
WA	Southern Cross	P77/4079	Southern Cross	100% (2)	SXG	Granted
WA	Southern Cross	P77/4080	Southern Cross	100% (2)	SXG	Granted
WA	Southern Cross	P77/4103	Southern Cross	100% (5)	SXG	Granted
WA	Southern Cross	P77/4112	Southern Cross	100% (5)	SXG	Granted
WA	Southern Cross	P77/4113	Southern Cross	100% (5)	SXG	Granted
WA	Southern Cross	P77/4120	Southern Cross	100% (5)	SXG	Granted
WA	Southern Cross	P77/4121	Southern Cross	100% (5)	SXG	Granted
WA	Southern Cross	P77/4122	Southern Cross	100% (5)	SXG	Granted
WA	Southern Cross	P77/4124	Southern Cross	100% (5)	SXG	Granted
WA	Southern Cross	P77/4125	Southern Cross	100% (5)	SXG	Granted
WA	Southern Cross	P77/4150	Southern Cross	100% (5)	SXG	Granted
WA	Southern Cross	P77/4151	Southern Cross	100% (5)	SXG	Granted
WA	Southern Cross	P77/4152	Southern Cross	100% (5)	SXG	Granted
WA	Southern Cross	P77/4168	Southern Cross	100% (5)	SXG	Granted



State	Tenement Name	Tenement ID	Location	Interest	Holder	Comments
WA	Southern Cross	P77/4169	Southern Cross	100% (5)	SXG	Granted
WA	Southern Cross	P77/4185	Southern Cross	100% (5)	SXG	Granted
WA	Southern Cross	P77/4186	Southern Cross	100% (5)	SXG	Granted
WA	Southern Cross	P77/4187	Southern Cross	100% (5)	SXG	Granted
WA	Southern Cross	P77/4196	Southern Cross	100% (5)	SXG	Granted
WA	Southern Cross	P77/4197	Southern Cross	100% (5)	SXG	Granted
WA	Southern Cross	P77/4198	Southern Cross	100% (5)	SXG	Granted
WA	Southern Cross	P77/4199	Southern Cross	100% (5)	SXG	Granted
WA	Southern Cross	P77/4202	Southern Cross	100% (5)	SXG	Granted
WA	Southern Cross	P77/4203	Southern Cross	100% (5)	SXG	Granted
WA	Yilgarn	E77/1275	Yilgarn	0% (9)	POL	Granted
WA	Yilgarn	E77/1380	Yilgarn	0% (2)	POL	Granted
WA	Yilgarn	E77/1989	Yilgarn	0% (2)	POL	Granted
WA	Yilgarn	E77/1991	Yilgarn	0% (2)	POL	Granted
WA	Yilgarn	E77/2077	Yilgarn	0% (2)	POL	Granted

Mining tenements acquired or disposed of during the quarter and their location

State	Tenement Name	Tenement ID	Location	Interest	Holder	Comments
WA	Bullfinch	P77/4223	Bullfinch	100%	SXG	Granted
WA	Bullfinch	P77/4224	Bullfinch	100%	SXG	Granted
WA	Bullfinch	P77/4225	Bullfinch	100%	SXG	Granted
WA	Bullfinch	P77/4232	Bullfinch	90% (3)	SXG	Granted
WA	Bullfinch	P77/4233	Bullfinch	90% (3)	SXG	Granted
WA	Marda	E77/2140	Marda	100% (2)	SXG	Granted
WA	Marda	E77/2141	Marda	100% (2)	SXG	Granted
WA	Marda	E77/2150	Marda	100% (2)	POL	Application
WA	Marda	L77/268	Marda	100%	SXG	Application
WA	Marda	M77/1264	Marda	0% (2)	SXG	Application
WA	Marda	P77/3874	Marda	0% (10)	OTH	Granted
WA	Marda	P77/4019	Marda	0% (10)	OTH	Granted
WA	Marda	P77/4127	Marda	0% (10)	OTH	Granted
WA	Marda	P77/4061	Marda	0% (10)	OTH	Granted
WA	Marda	P77/4226	Marda	100% (2)	SXG	Granted
WA	Marda	P77/4227	Marda	100% (2)	SXG	Granted
WA	Marda	P77/4228	Marda	100% (2)	SXG	Granted
WA	Marda	P77/4229	Marda	100% (2)	SXG	Granted
WA	Marda	P77/4230	Marda	100% (2)	SXG	Granted
WA	Marda	P77/4231	Marda	100% (2)	SXG	Granted
WA	Marda - Evanston	E77/2032	Marda - Evanston	0% (2)	POL	Granted
WA	Southern Cross	P77/4199	Southern Cross	100% (5)	SXG	Granted

Beneficial percentage interests held in farm in or farm out agreements at end of quarter

State	Project Name	Agreement Type	Parties	Interest held at end of quarter by exploration entity or child entity	Comments
-------	--------------	----------------	---------	---	----------

Nil

Beneficial percentage interests in farm in or farm out agreements acquired or disposed of during quarter

State	Project Name	Agreement Type	Parties	Interest held at end of quarter by exploration entity or child entity	Comments
-------	--------------	----------------	---------	---	----------

Nil



Notes – SXG Interests in Mineral Rights

- (1) SXG holds 100% of Non-Fe & Ni Rights
- (2) SXG holds 100% of Non- Fe Rights & 30% Ni Rights
- (3) SXG holds 90% of all Rights except 30% Ni Rights
- (4) SXG holds 100% of Non- Fe Rights
- (5) SXG holds 100% of all Rights and 30% of Ni Rights
- (6) same as (5)
- (7) SXG holds 80% of Non- Ni Rights & 30 % of Ni Rights
- (8) SXG holds 95% of Fe Rights & 100% of all other rights
- (9) SXG holds 100% of Non- Fe Rights - Non CESB. Polaris 100% of Non - Fe rights CESB
- (10) SXG – Option to Purchase 100%

EL	New South Wales	exploration licence
GL	New South Wales	gold lease
ML	New South Wales	mining lease
MPL	New South Wales	mining purposes lease
E	Western Australia	exploration licence
L	Western Australia	miscellaneous licence
M	Western Australia	mining lease
P	Western Australia	prospecting licence

BEL	Bellriver Pty Ltd
CLF	Cliffs Asia Pacific Iron Ore Pty Ltd
ELX	Elixir Holdings Pty Ltd
FOR	Formula Resources Pty Ltd
GEO	Geological Resource Solutions Pty Ltd
GRE	Greenwood Resources Pty Ltd
GRY	Gryphon Minerals Pty Ltd
JAY	Jayvee Resources Pty Ltd
MAJ	Majeka Minerals Pty Ltd
MOT	Motueka Investments Pty Ltd
OTH	Other non-corporate individuals
PMB	Polymetals (Mt Boppy) Ltd
POL	Polaris Metals Pty Ltd
SNH	Snap Hook (WA) Pty Ltd
SXG	Southern Cross Goldfields Ltd
