



SOVEREIGN GOLD
COMPANY LIMITED

Sovereign Gold Company Limited
ACN 145 184 667

Level 2, 131 Macquarie Street
Sydney NSW 2000
Tel: +61 2 9251 7177
Fax: +61 2 9251 7500

Contact
Michael Leu CEO

email: mleu@sovereigngold.com.au

Latest News
www.sovereigngold.com.au

Directors / Officers
John Dawkins AO
Michael Leu
Peter Meers
Jacob Rebek
Qinjing Qiu

ASX Symbol: SOC

Sovereign Gold Company is exploring for large Intrusion-Related Gold Systems in New South Wales.

Sovereign Gold's project area covers over 2,650 square kilometres.

The principal project is located around the township of Uralla, 21km southwest of Armidale, New South Wales, Australia, with superb infrastructure logistics. It is close to major roads, rail, airport, labour source, university, power, and engineering.

Available production records indicate that the Rocky River-Uralla Goldfield yielded 5,193 kg (approximately 167,000 ounces) of gold mostly from Tertiary deep leads during the period 1858-1967.

Sovereign Gold's exploration objective is to locate the hard rock ore sources.

ASX Release
25th May 2012

Frasers Find Drilling Underway – High Grade Lode

- **2012 Drill Program** designed to prioritise targets to ensure significant gold intercepts.
- **Drilling to commence on high grade lode at Frasers Find.**
- **Free gold observed in polished thin section of ore sample from Frasers Find.**
- **The sample containing free gold assayed 2.42 ounces of gold, 1.79 kilograms of silver and 5.95% lead per tonne.**

Sovereign Gold's long term drilling program over several high quality gold-bearing targets is underway.

Priority has been to evaluate data to select areas for drilling with the highest potential for further gold discoveries.

Selection criteria is principally based on the magnitude and number of coinciding (occupying the same place) features indicative of gold mineralisation including magnetic/radiometric anomalies, geochemical gold anomalies, structural data and alteration mapping.

SAMPLE DESCRIPTION	Au-AA25		Ag-OG62		Pb-OG62	ME-MS61		
	Au ppm	Au Ounce	Ag ppm	Ag Ounce	Pb %	Zn ppm	Bi ppm	Sb ppm
S581	75.2	2.42	1790	57.56	5.95	1200	3780	435

Table 1: Frasers Find, assays of high-grade quartz-sulphide (ALS Certificate of Analysis BR12004879).

For further information please contact:

Henry Kinstlinger
Investor Relations

Telephone: +61 2 9251 7177

Qualifying Statements

The information in this Report that relates to Exploration Information is based on information compiled by Michael Leu who is a member of the Australian Institute of Geoscientists.

Mr Leu is a qualified geologist and is a director of Sovereign Gold Company Limited.

Mr Leu has sufficient experience, which is relevant to the style of mineralisation and type of deposit under consideration and to the activity, which he is undertaking to qualify as a Competent Person as defined in the 2004 Edition of the Australasian Code for Reporting of exploration Results, Mineral Resources and Ore Resources. Mr Leu consents to the inclusion in this announcement of the Exploration Information in the form and context in which it appears.

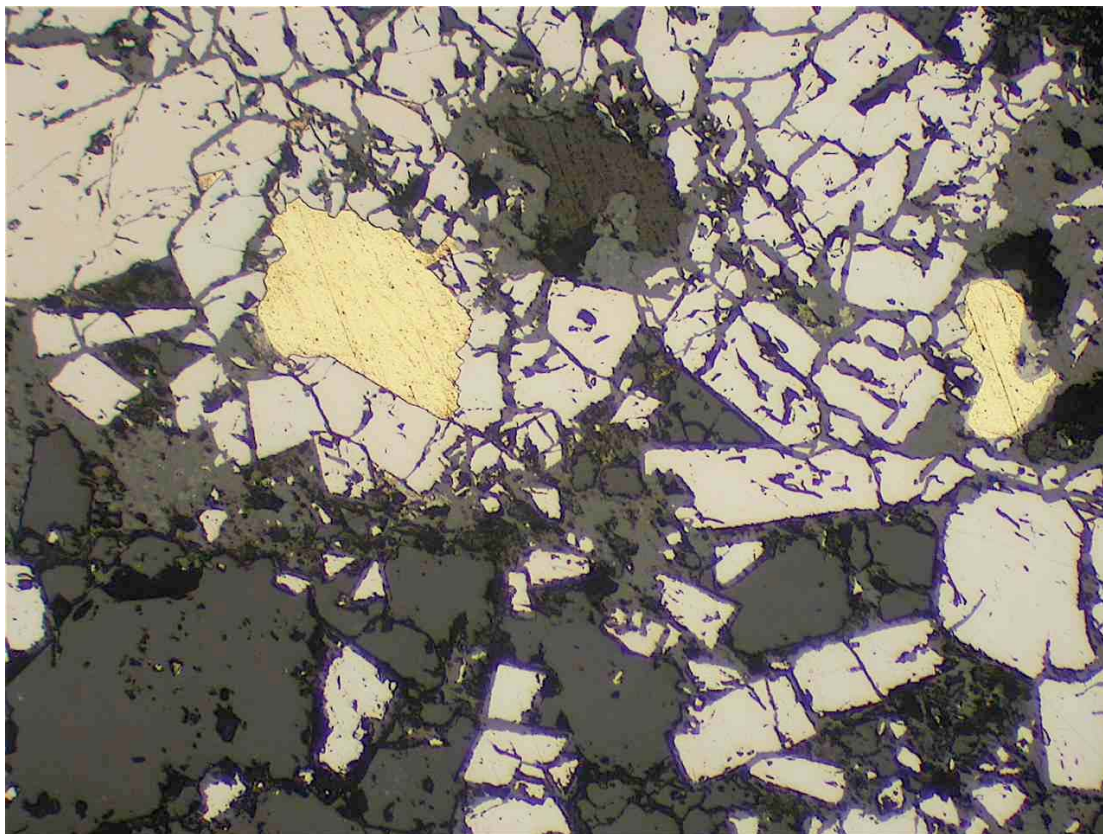


Figure 1: Gold grains in quartz-sulphide ore. Larger gold grain is 180 μm across. Photomicrograph of polished thin section, plane polarised reflected light, field of view 1 mm across.

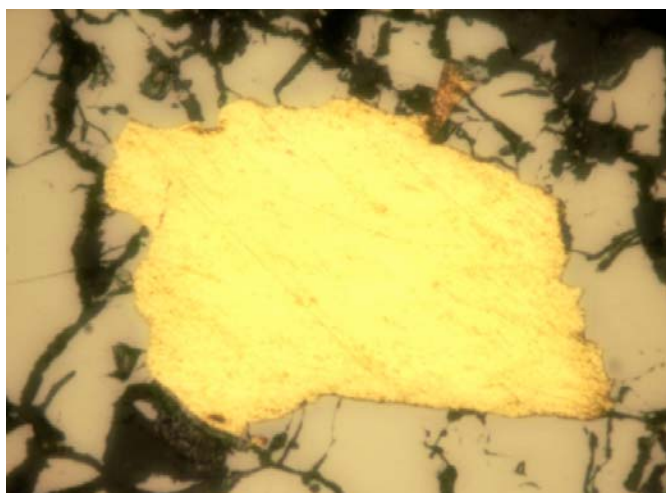


Figure 2: Gold grain (180 μm across). Photomicrograph of polished thin section, plane polarised reflected light.



Figure 3: Fraser's Find. Sample S581 (Table 1), High grade quartz-sulphide (abundant arsenopyrite, pyrite, galena) from the dump by the main shaft, assayed 75.2 g/t gold (2.42 ounces), 1,790 g/t silver (57.56 ounces, 1.76 kilograms) and 5.95% lead/tonne (ALS Certificate of Analysis BR12004879).

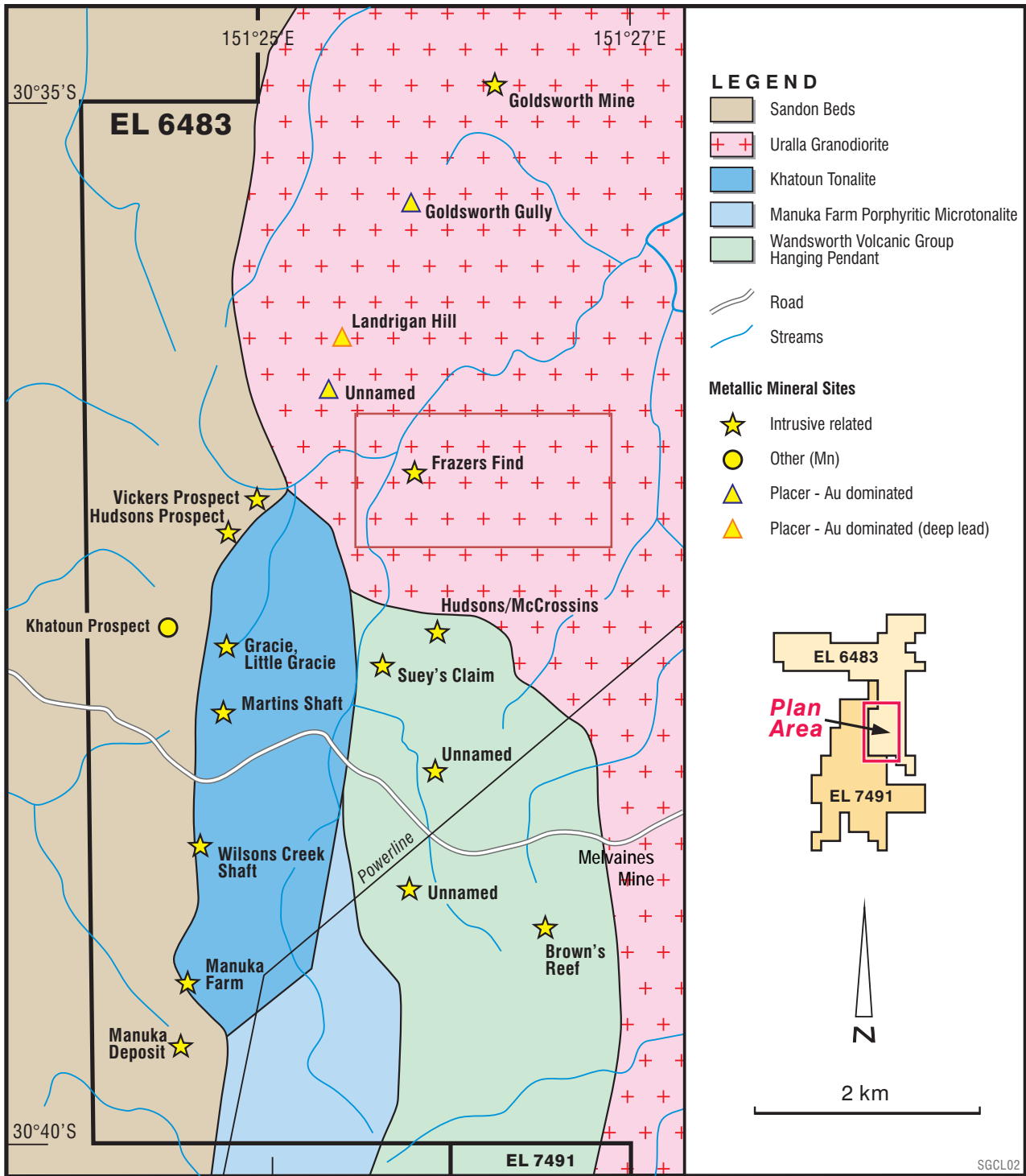


Figure 4: Location Frasers Find

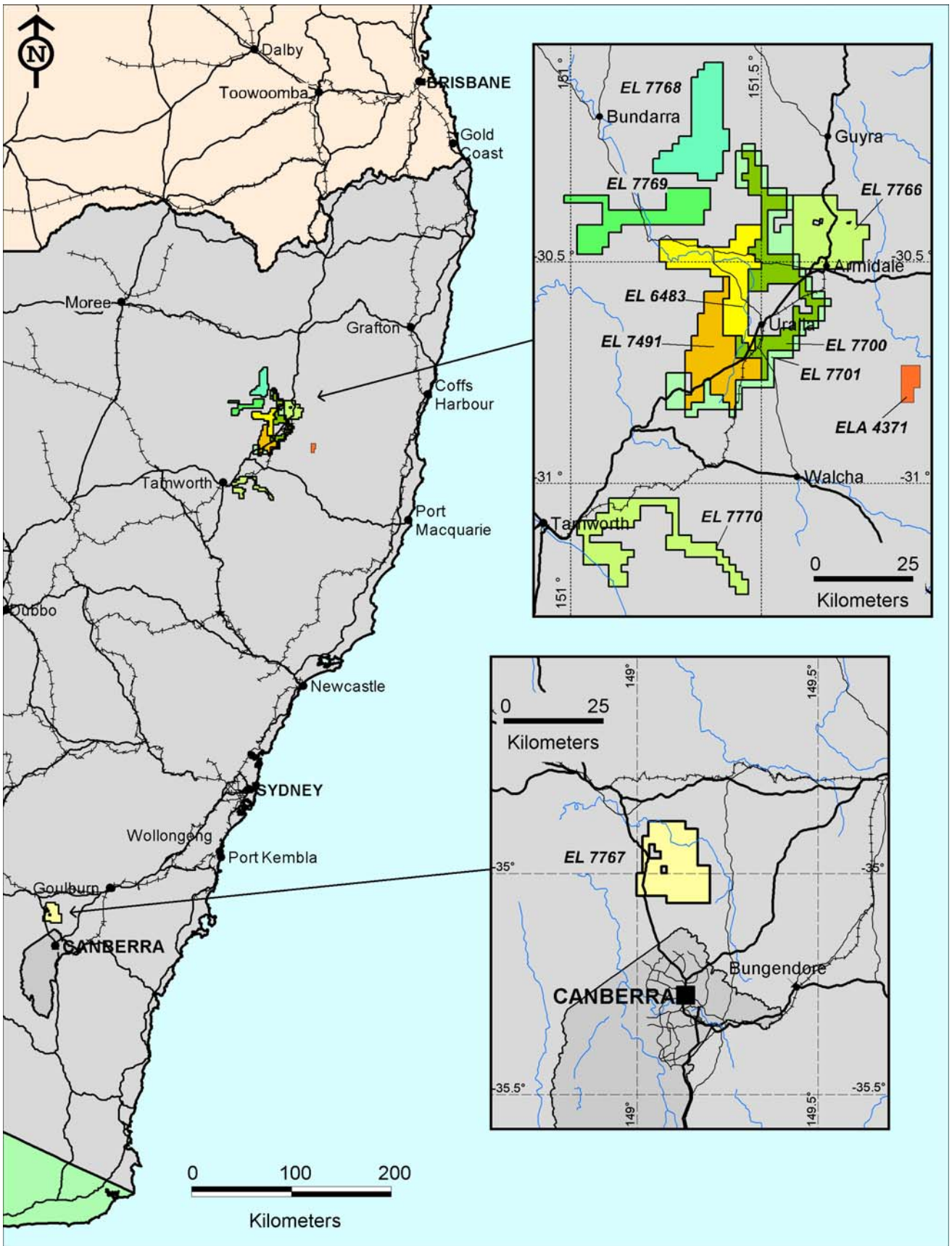


Figure 5: Sovereign Gold's Tenements