



SOVEREIGN GOLD COMPANY LIMITED

Sovereign Gold Company Limited
ACN 145 184 667

Level 2, 131 Macquarie Street
Sydney NSW 2000
Tel: +61 2 9251 7177
Fax: +61 2 9251 7500

Contact

Nick Raffan CEO

email: nraffan@sovereigngold.com.au

Latest News

www.sovereigngold.com.au

Directors / Officers

John Dawkins AO
Nick Raffan
Michael Leu
Peter Meers
Jacob Rebek

ASX Symbol: SOC

Qualifying Statement

The information in this Report that relates to Exploration Information is based on information compiled by Michael Leu who is a member of the Australian Institute of Geoscientists.

Mr Leu is a qualified geologist and is a director of Sovereign Gold Company Limited.

Mr Leu has sufficient experience, which is relevant to the style of mineralisation and type of deposit under consideration and to the activity, which he is undertaking to qualify as a Competent Person as defined in the 2004 Edition of the Australasian Code for Reporting of Exploration Results, Mineral Resources and Ore Resources. Mr Leu consents to the inclusion in this announcement of the Exploration Information in the form and context in which it appears.

Targets

The potential quantity and grade of exploration targets is conceptual in nature. There has been insufficient exploration to define a Mineral Resource and it is uncertain if further exploration will result in the determination of a Mineral Resource.

ASX Release
17th November 2011

Confirmation of New Major Gold-Bearing Structures

- Selected in-situ rock chip samples returned up to 7.58g/t Au.
- New targets have strike lengths of over 2km and are open at both ends.
- Soil and rock sampling anomalies coincide with clearly defined magnetic linear anomalies and confirm previous interpretation that these are defining the conduits for gold-bearing fluids.
- Many square kilometres of a large gold-bearing system yet to be explored.

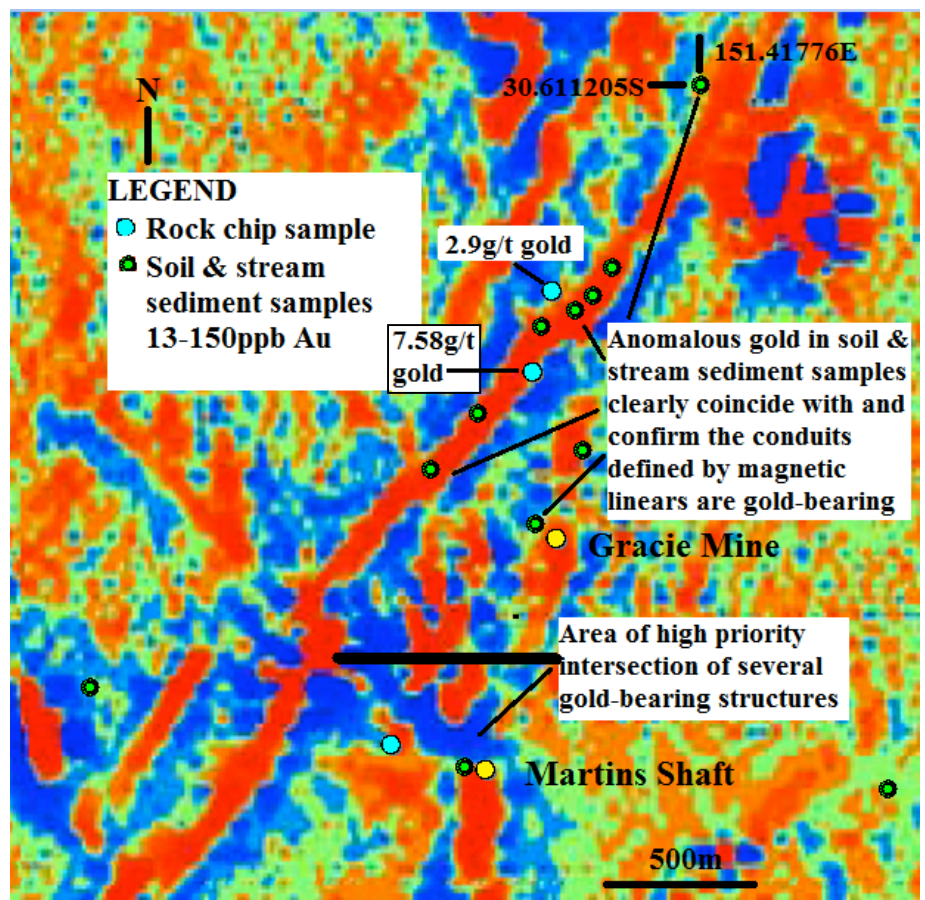


Figure 1 – Sections of Magnetic Linears showing coinciding anomalous gold in soil, stream and rock chips samples

Exploration is currently focused on the Reedy Creek area where a 2km long dyke anomalous in bismuth and arsenic is being mapped in detail and sampled for gold. After completion of the Reedy Creek program, geochemical sampling and mapping will focus on the gold-bearing structures shown in Figure 1. The principal aim of this exploration is to define drilling targets for early 2012.

For further information please contact:

Nick Raffan
CEO, Sovereign Gold Company Limited
Telephone: +61 2 9251 7177

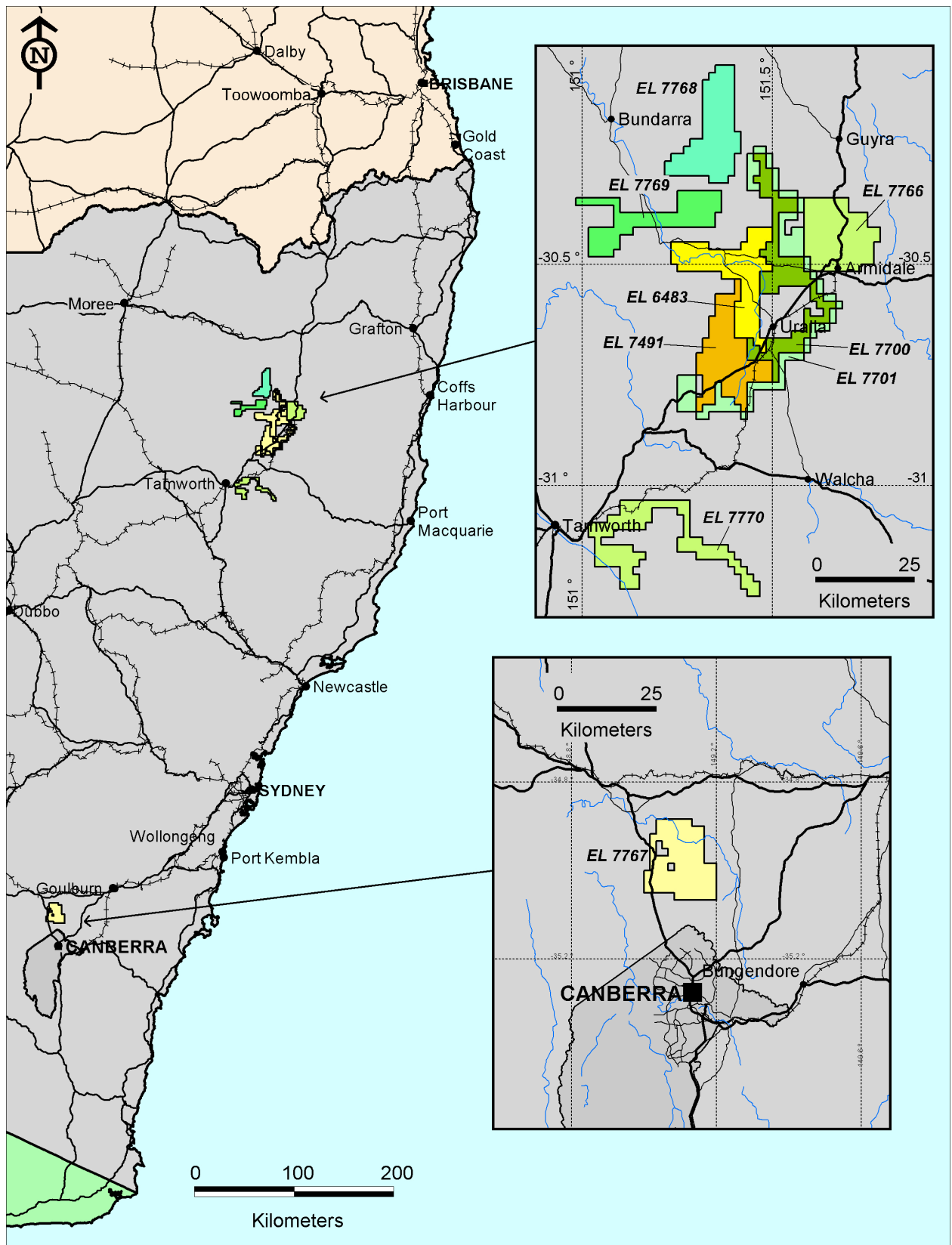


Figure 2 – Sovereign Gold Australian Tenements