



SOVEREIGN GOLD
COMPANY LIMITED

Sovereign Gold Company Limited
ACN 145 184 667

Level 2, 131 Macquarie Street
Sydney NSW 2000
Tel: +61 2 9251 7177
Fax: +61 2 9251 7500

Contact

Nick Raffan CEO

email: nraffan@sovereigngold.com.au

Latest News

www.sovereigngold.com.au

Directors / Officers

John Dawkins AO
Nick Raffan
Michael Leu
Peter Meers
Jacob Rebek

ASX Symbol: SOC

Qualifying Statement

The information in this Report that relates to Exploration Information is based on information compiled by Michael Leu who is a member of the Australian Institute of Geoscientists.

Mr Leu is a qualified geologist and is a director of Sovereign Gold Company Limited.

Mr Leu has sufficient experience, which is relevant to the style of mineralisation and type of deposit under consideration and to the activity, which he is undertaking to qualify as a Competent Person as defined in the 2004 Edition of the Australasian Code for Reporting of exploration Results, Mineral Resources and Ore Resources. Mr Leu consents to the inclusion in this announcement of the Exploration Information in the form and context in which it appears.

Targets

The potential quantity and grade of exploration targets is conceptual in nature. There has been insufficient exploration to define a Mineral Resource and it is uncertain if further exploration will result in the determination of a Mineral Resource.

ASX Release
24th August 2011

Close Spaced Airborne Magnetic and Radiometric Survey Completed

Thomson Aviation has completed a Fixed Wing Geophysical Survey of a total of 5,008 line km covering a large part of EL 6483 and parts of EL 7491 and EL 7700. This very detailed survey was flown at 50 metre elevation along 60 metre close spaced survey lines.

This low level magnetic and radiometric survey will provide a very detailed structural image for identifying potential conduits for gold-bearing fluids. The radiometric survey will help define the extent and alteration of individual dykes and dyke swarms.

In particular the airborne survey may identify areas with a radiometric signature similar to that associated with alteration and gold mineralisation at Martin's Shaft.

This survey is expected to define multiple new targets for follow up soil geochemistry and RC drilling.

Martin's Shaft, Little Gracie, Gracie and Wilson's Creek are located just to the east of the NE trending major magnetic lineament on less defined structural elements that are trending NNE.

Mineralisation at these prospects is hosted by metasediments and dykes located on or very close to the shoulder of the underlying Khatoun Tonalite.

An airborne magnetic survey carried out by the NSW Geological Survey was wide spaced and identified the major structural elements such as the major lineament that has been called the Old Bonanza Dyke. The largely unexplored SW-NE trending linear feature extends at least 40km and has acted as a principal conduit for mineralising solutions and multiple high grade gold lodes.

Drilling at the Goldsworth Prospect has indicated that this major magnetic feature represents a zone of intense alteration and gold mineralisation. It hosts many dykes, some of which are mineralised.

Of particular interest is to clearly define the NNE trending structures in the search for new targets similar to Martin's Shaft, Gracie and Wilson's Creek.

In EL 7700, a NW trending structure intersects the major magnetic linear in the SW corner; this is the Reedy Creek Prospect. This is the site of a large gold in soil anomaly that is being re-tested and shows as a strong magnetic anomaly in the raw data (**Figure 0**).

In EL 6483, fieldwork has shown that the mineralising system extends for 4km east to west, and at least 10km in a north-south direction.

There are currently multiple high priority targets and these are expected to increase in number after the data has been processed, which is underway.

For further information please contact:

Henry Kinstlinger,
Investor Relations, Sovereign Gold Company Limited

Telephone: +61 2 9251 7177

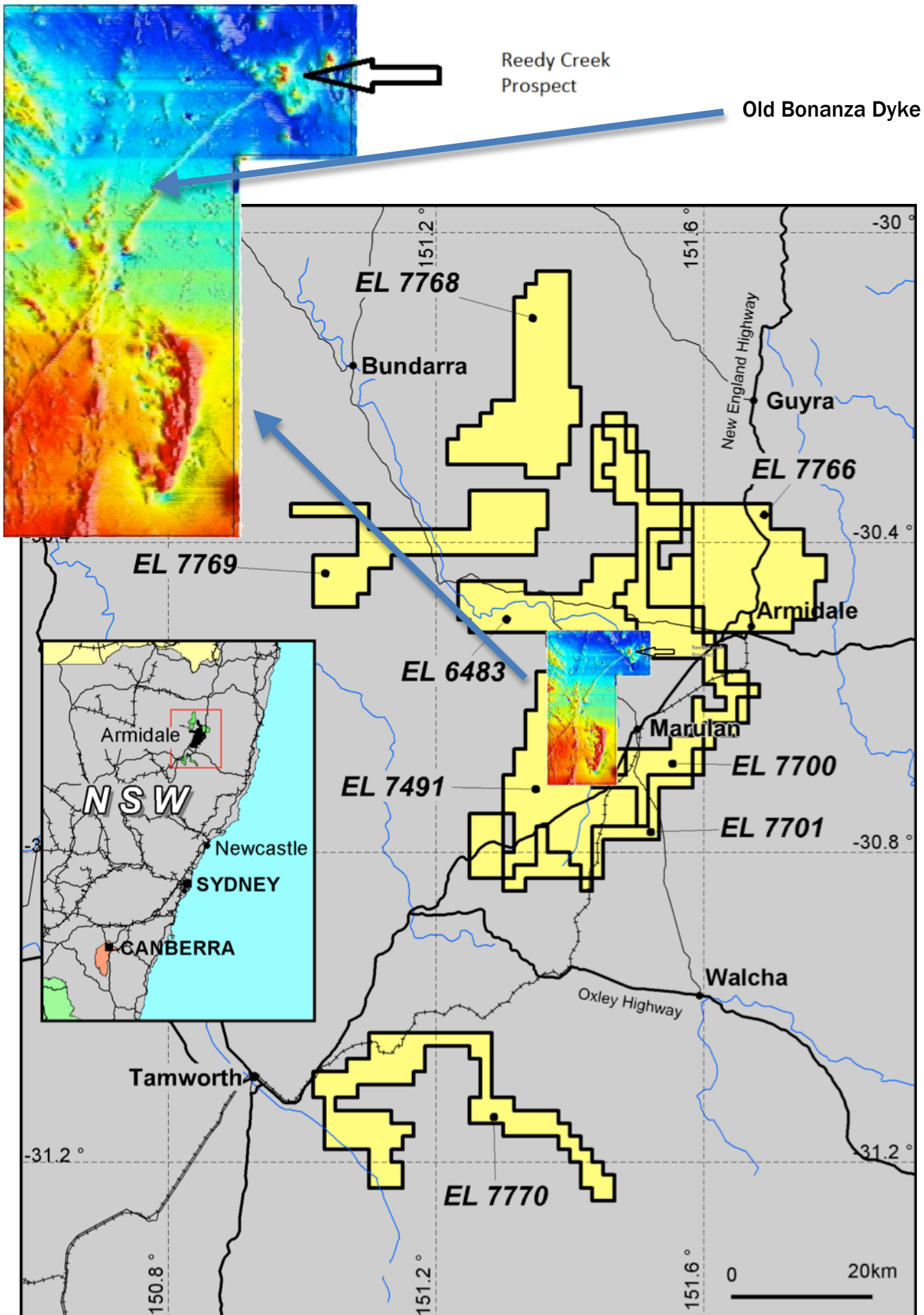


Figure 0 - Sovereign Gold Armidale Tenements showing surveyed area with raw unprocessed magnetic data