

10 September 2012

ENVIRONMENTAL BEST PRACTICE AT TCM PROJECT

HIGHLIGHTS

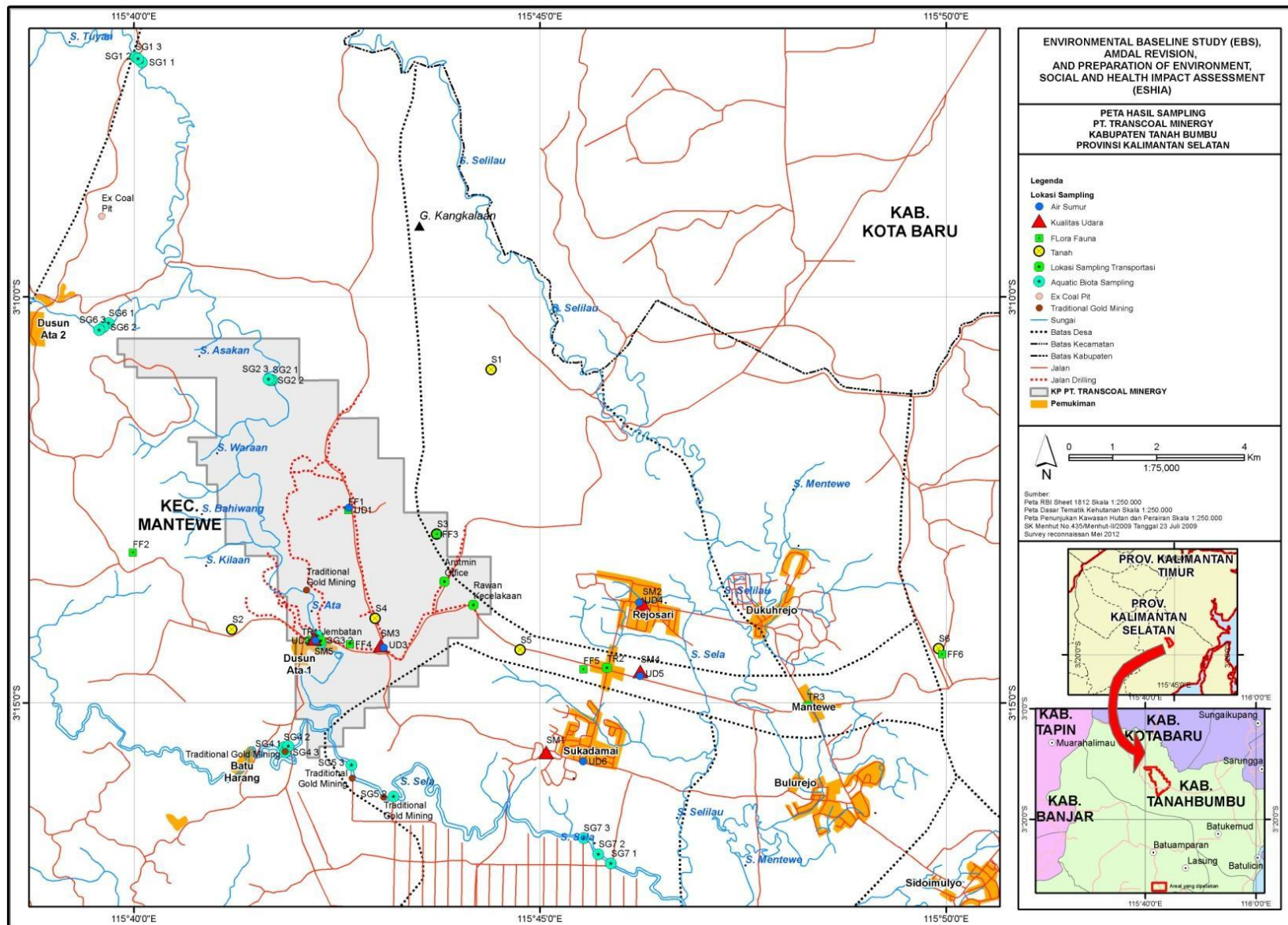
- **Samples of ambient air, noise, river water, aquatic biota, fish, ground water and soil collected**
- **Socio-economic, cultural and public health surveys conducted**
- **Flora, fauna observations and transportation surveys completed**

Pan Asia Corporation Ltd (ASX: PZC) is pleased to announce that as part of its ongoing environmental reporting and commitment to meet world's best practice for Environmental & Health Standards, it has completed dry season baseline data collection at its flagship high CV TCM Coal Project in South Kalimantan, Indonesia.

Pan Asia CEO Alan Hopkins said, "This shows our commitment to bring the TCM project into development while observing best environmental practice".

The sampling has been conducted by and under the direct supervision of PT Hatfield Consultants who were commissioned by the Company to revise and update the existing TCM AMDAL (Indonesian Environmental Impact Assessment), expected to be completed by March 2013. This environmental survey is being completed to a standard that meets the Equator principles and International Finance Corporation Standards and forms a part of the Company's ongoing commitments for inclusion in the revised AMDAL. Samples were collected over a wide area (as can be seen in the following map) for ambient air, noise, river water, ground water, aquatic biota, fish and soil. Flora, fauna observations and transportation surveys were completed. Socio-economic, cultural and public health surveys were conducted on the Rejosari, Mantewe and Sakadamai Villages, these three villages are situated outside of the concession area. The following photos below show the detailed sampling undertaken.

Map of Sampling Locations



Ambient Air Quality Sampling



Ambient air sampling at Mantewe Village during the day



Ambient air sampling at Mantewe Village at night



CO Measurements

Ground Water Surveys



Well water sampling at Sukadami Village



Well water sampling



Well water sampling at Rojosari Village



In situ measurements of pH, EC and temperature



Samples being bottled to be sent to the laboratory

Aquatic Biota Survey



Microinvertebrate sampling using Suber-net at Ata River



Fish net used for sample collection



Microinvertebrate sampling using Suber-net at Tuyan River



Plankton Sampling

Flora and Fauna Survey



Greater Coucal (*Centropus sinensis*)



Hooded Pitta (*Pitta sordid*)



Water Monitor Lizard (*Varanus salvator*)



Soil Surveys



Socio Economic and Public Health Survey



Interview with local people at Mantewe Village



Interview for public health with local people at Mantewe Village



Interview for public health with local people at Rejosari Village

Transportation Survey



Measurement of road width



Measurement of frontage road on Rejosari Village



Traffic Counting



Barge loading facilities – End of survey

About Pan Asia

Pan Asia Corporation Limited is a rapidly growing diversified resources company primary listed on the Australian Securities Exchange (ASX: PZC) and secondary listed on the Frankfurt Stock Exchange and with offices in Perth and Sydney, Australia and Jakarta, Indonesia.

The Company aims to be a major supplier of key resources into the expanding Asian markets. A strong local partner network will be the foundation for the Company's aim to become a significant resource company in Asia over the coming years. An extensive international financial network provides support for the Company's rapid growth plans. Pan Asia brings together an experienced Board and management team with a proven track record in the identification, funding and development of resources projects.

For Further Information Contact:

Alan Hopkins

Chief Executive Officer
Pan Asia Corporation Ltd
Tel: + 61 8 9381 5819

Media

Annette Ellis
Purple Communications
Tel: +61 8 6314 6300;
0458 200 039