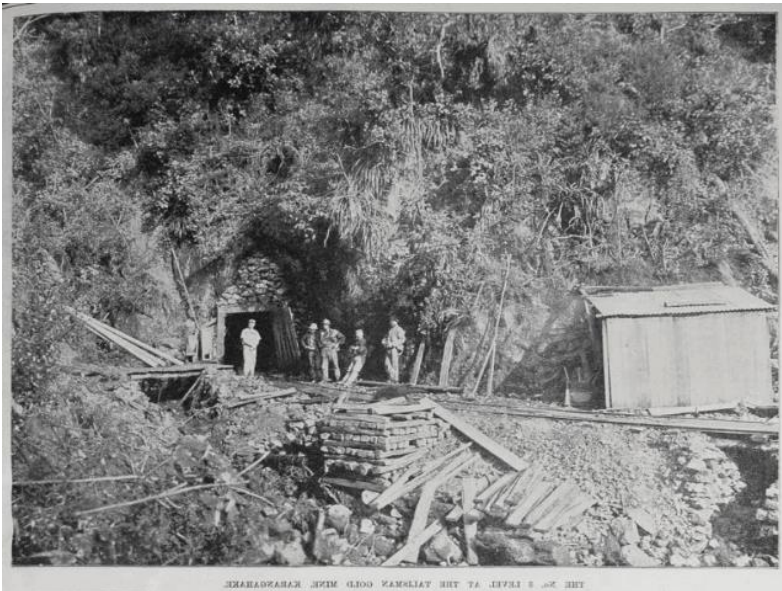


9th June 2017

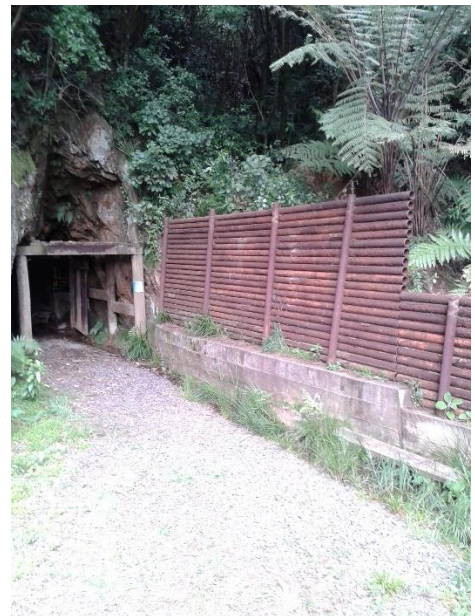
ANNOUNCEMENT BY NEW TALISMAN GOLD MINES LIMITED (NTL)
FOR IMMEDIATE RELEASE
TALISMAN MINE SITE ESTABLISHED

New Talisman today is delighted to announce that the first stage of site clearing and infrastructure establishment is complete.

Site work started Friday 2nd June as announced with the clearing of noxious weeds, particularly gorse from the site and re-spreading aggregate stockpiled on site. There were no issues with traffic movement on the access road.



Portal entrance circa 1900's



Portal entrance today



Site May 2017



Noxious weed clearance 6th June





Noxious weed clearance as at 7th June



Site establishment as at 8th June

The Company's CEO, Matthew Hill said, "It is an impressive effort by the mine team in a very short period to have completed a majority of the initial works, with the small bogger and digger working, site securely fenced off and we now have the site office established and secure. We are grateful to the support of the wider community, the police, and local landowners, including the Department of conservation who have closed the site off to public access."

The activities as outlined previously are updated as follows

- Site establishment and security – **Complete**
- Installation of ventilation management systems -**Design and construction underway**
- Installation of water storage facilities – **Design and construction underway**
- Installation of compressed air supply – **Design and assessment in progress**
- Installation of Generator – **Completed**
- Upgrades of water pond – **Near completion**
- Mobilisation of bogger and digger to mine - **Complete**
- Refurbishment of level 8 from portal through to Mystery vein location – **Commencing when surface works complete**

Matthew Hill
Chief Executive Officer
New Talisman Gold Mines Limited

About New Talisman Gold Mines Ltd

New Talisman Gold is a dual listed (NZSX & ASX: NTL) with over 2,300 shareholders who are mainly from Australia and New Zealand. It is a leading New Zealand minerals development and exploration company with a mining permit encompassing the Talisman mine one of New Zealand's historically most productive gold mines. Its gold properties near Paeroa in the Hauraki District of New Zealand are a granted mining permit, including a JORC compliant mineral resource within the original Talisman underground mine, and a Heads of agreement with Newcrest on an adjacent exploration permit along strike from the mine. The company is now advancing its plans to develop the mine, and advance the exploration project.

More about New Talisman Gold at www.newtalisman.co.nz

