



From Farm to Pharma

MMJ PhytoTech Limited
A Vertically-Integrated Biopharmaceutical Company
July 2016 Investor Presentation

- MMJ PhytoTech ('MMJ') is a vertically-integrated biopharmaceutical company focused on developing and commercializing Medical Cannabis ('MC') based therapeutics
- The Company was formed from the July 2015 merger of MMJ Bioscience (Can PrivCo) and PhytoTech Medical (Aust. PubCo) and is traded on the ASX under the symbol 'MMJ'
- MMJ's unique "Farm to Pharma" strategic platform integrates the entire MC pharmaceutical supply chain combining MC cultivation with pharmaceutical processing / advanced delivery technologies and R&D / clinical development – unlocking the full value of the Company's MMPR assets
- The "Farm to Pharma" integration is essential for the development and supply of MC-based pharmaceuticals but also provides the company with several near- and mid-term pre-pharma revenue sources
- Currently, MMJ is ramping up production at its MMPR facility in Canada, growing revenues from sales of its exclusive Gelpell® CBD Capsules in the EU and preparing for the Q4 2016/Q1 2017 commencement of two Phase 2 Clinical trials using Gelpell® THC/CBD and Gelpell® CBD capsule for MS and Epilepsy indications respectively

MMJ's unique "Farm to Pharma" strategic platform distinguishes the Company from its peers and provides investors with industry-leading exposure to the emerging MC sector

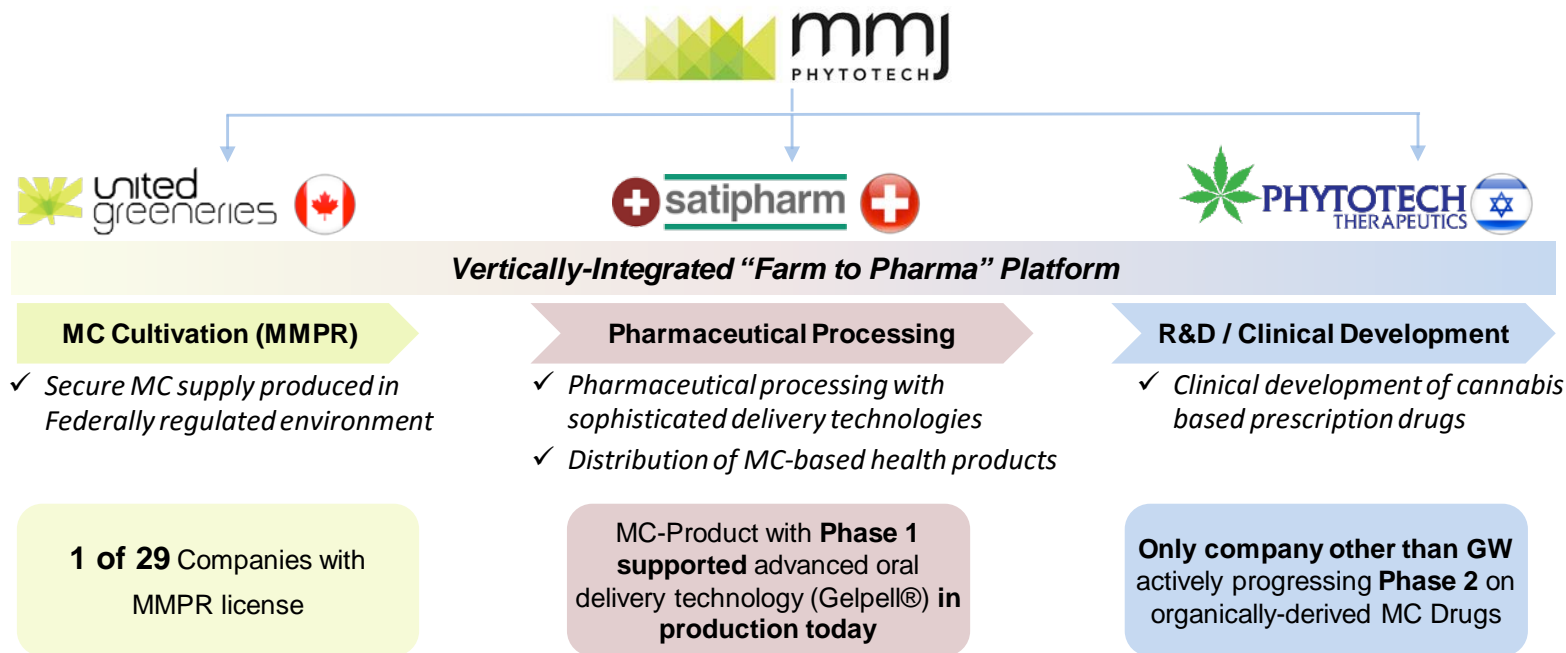
MMJ Capital Summary (A\$M)

Ticker:	(ASX)	MMJ
Share Price:	(A\$, Jul 18 2016)	\$0.28
Shares:	(FDITM, M)	173.9
Equity Value:	(A\$M)	\$48.7
Less: Cash	(A\$M)	(3.6)
Add: Debt	(A\$M)	--
Enterprise Value:	(A\$M)	\$45.1

6 Month Avg Vol: (M Shares) **0.9**

MMJ Price / Vol (YTD 2016)





MMJ's Vertically-Integrated Platform is a Key Competitive Advantage



*A vertically-integrated **biopharmaceutical** company focused on developing and commercializing **Medical Cannabis ('MC')** based therapeutics*

Unique Business Plan

Targeting cost-effective, fast-to-market prescription drugs leveraging MMJ's Integrated supply chain and exclusive delivery technologies. MMJ also aims to grow current revenues from sales of Gelpell® CBD food supplement and to develop additional multiple pre-pharma revenue streams from the sale of MC and MC-based products in appropriate global markets.

Vertical Integration

- ✓ Three operating divisions secure entire MC pharmaceutical supply chain – a crucial feature
- ✓ MC Cultivation + Pharmaceutical Processing & Delivery Technologies + Clinical Development

Global Footprint

- ✓ Strategically positioned in key MC markets globally – Leveraging “jurisdictional synergies”
- ✓ Pre-pharma revenue opportunities from international MC markets

Multiple Pre-pharma Revenue Streams

- ✓ Dual track potential for Rx drugs in clinical development – e.g. marketing drugs in global MC markets after completing Phase 1 while continuing clinical development
- ✓ Pre-pharma revenue will be used to support clinical development efforts

Fast-to-Market Clinical Development

- ✓ Large pipeline with initial focus on THC/CBD formulations utilizing Gelpell® oral capsules for several indications

MMJ is Strategically Positioned in Select Jurisdictions



ASX-Listed Parent Co.
Strat / Corp Functions



MC Cultivation



Processing & Delivery
Tech; Gelpell Sales



R&D, Clinical
Development



MMJ is positioned as the only junior MC-focused biopharmaceutical player

		Listed Licensed Producers	GW pharmaceuticals	mmj PHYTO TECH
Medicinal Cannabis Value Chain ↑ Farm Secure and Consistent Legal MC Supply Current Revenues and Multiple Near-Term Cash Flow Streams Several Mid- to Long-Term Value Streams Pharma ↓	MC Cultivation			
	MC Cultivation Facility	✓	✓	✓
	Near-Term Value Sources			
	MC products containing narcotics (THC)	✓	✓	✓
	Current Revenues	✓	✓	✓
	Exposure to Potential Recreational Market	✓	✗	✓
	Global Approach	✗	✓	✓
	Clinical Trial Results	✗	✓	✓
	Exclusive Advanced Delivery Technologies	✗	✓	✓
	Multiple Pre-Pharma Revenue Streams	✗	✗	✓
	Long-Term Value Sources			
	Large Rx Pipeline	✗	✓	✓
	Current / Future Rx Sales	✗	✓	✓

Source: Company publications, equity research, other publicly available information

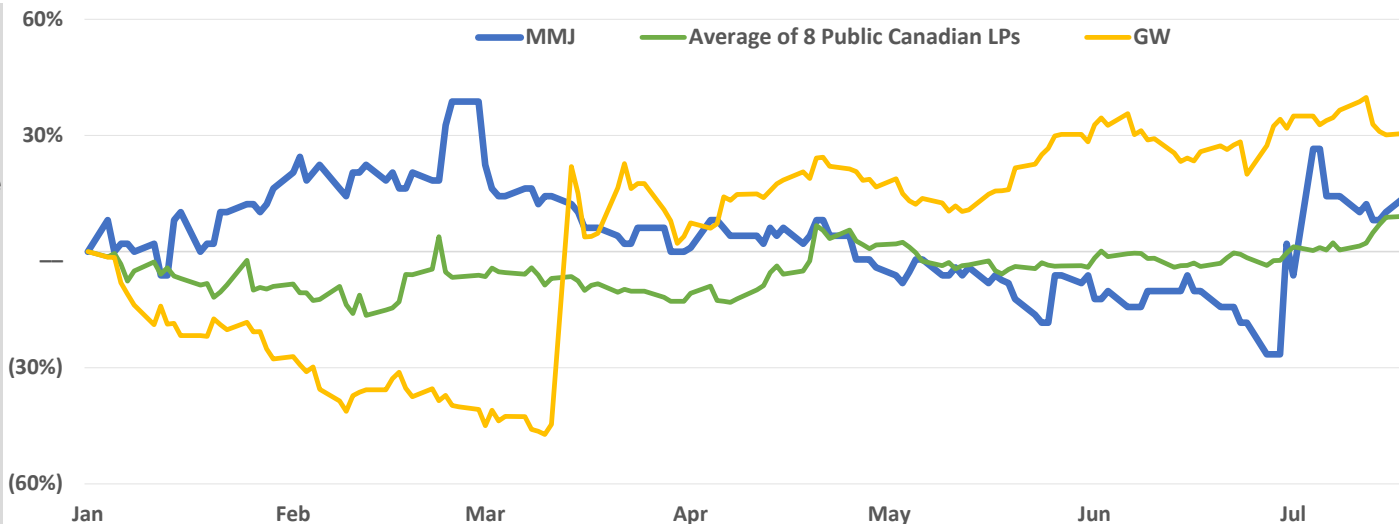
Market Landscape MMJ's Global Peers



Relative Share Price Performance

Comparable TSX-V, CSE & LSE Listed Medical Cannabis Companies

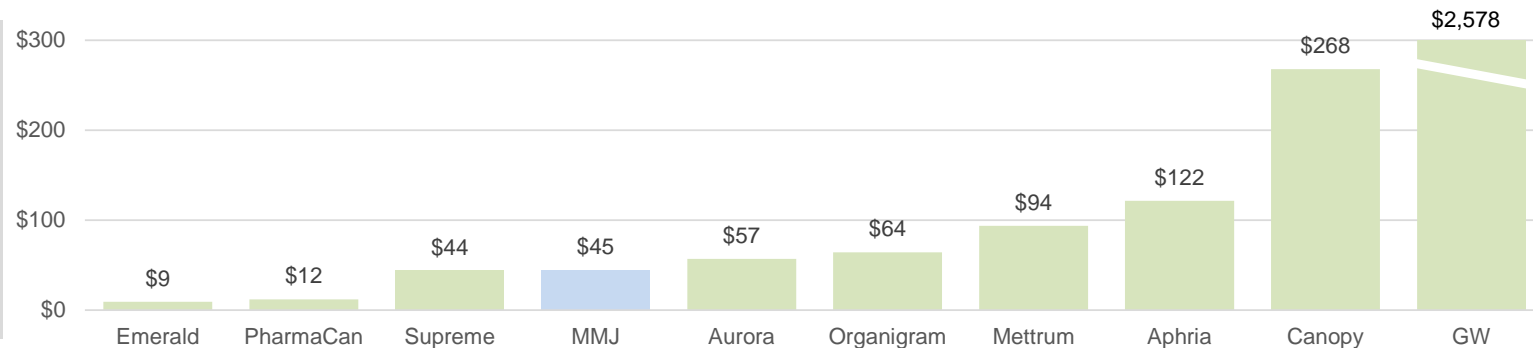
(C\$, %, YTD to July 18)



Current Market Caps

Comparable TSX-V, CSE & LSE Listed Medical Cannabis Companies

(C\$M, as at July 18)



MC Cultivation Large and Scalable Western Canadian Footprint



Large Footprint

- ✓ Two MC cultivation facilities
- ✓ Combined total potential capacity of ~13t/year –
- ✓ Strategic source of MC for pharma supply chain

Huge Scalability

- ✓ High compliance installations at Duncan allow for processing ~10x current capacity

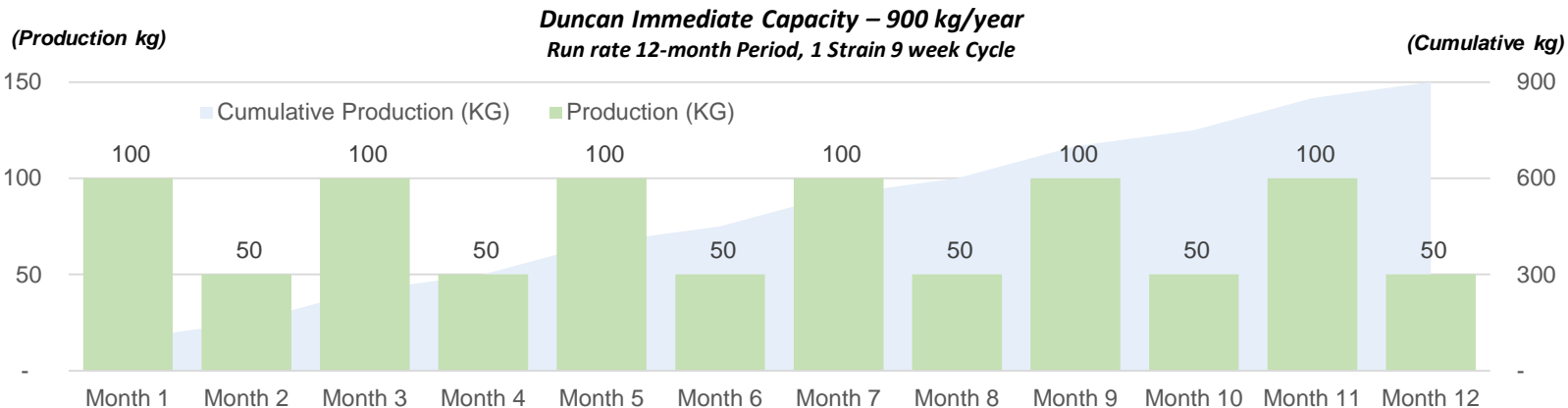
Immediate Capacity

Duncan Facility – BC

- ✓ MMPR Production License granted in June
- ✓ 16,000 ft², level 8 security vault, state-of-the-art facility
- ✓ Production ramp up has commenced
- ✓ Ability to process ~10x current production capacity leaves room for expansion opportunities

Lucky Lake Facility – SK

- ✓ Security Screening Stage
- ✓ Modern agricultural facility in SK – 62,000 ft²; ample water, electricity
- ✓ Estimated 12t/year capacity
- ✓ Facility on 18 acres of owned land
- ✓ Supportive community and adequate utilities



- ✓ Federal Government of Canada is moving forward with full recreational legalization
 - ✓ Recreational legalization was campaign promise of current Liberal Federal Government
 - ✓ Minister of Health announced in April that Canada would have draft legislation by Spring 2017
 - ✓ Legalization 'Task Force' appointed by Federal Government late June
 - ✓ First recreational sales expected within 18-24 months
- ✓ MMPR LPs expected to have significant first mover advantage in recreational market

**Current Est. Size of
Canadian MC Market**

\$100M



**Est. Size of Canadian
Recreational Market**

\$5,000M



MC Cultivation Duncan Facility – Overview



Location: Duncan, BC – Vancouver Island

Ownership: LT Lease to MMJ (7+ Years)

Size: 16,000 ft²

Capacity: 900 kg/year

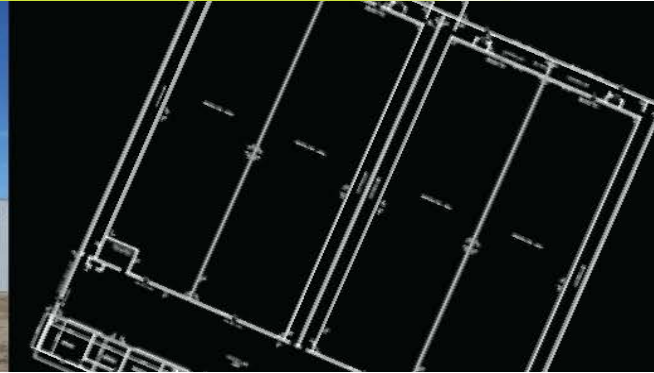
Grow Plan: 3 bays staggered, 1 strain, from seed, each bay has second level propagation room

MMPR Status: MMPR Production License

▲ 16,000 ft² production facility and full quality control laboratory in Duncan, BC:

- ▶ 9,600 ft² cultivation area
- ▶ 1,000 ft² clean area
- ▶ Level 8 security vault
- ▶ Will house extraction machinery
- ▶ Fully automated watering system

MC Cultivation Lucky Lake Facility – Overview



Location:	Lucky Lake SK
Ownership:	100% Owned by MMJ
Size:	62,000 ft ² on 18-acre Site
Capacity:	12,000 kg/year
MMPR Status:	Security Clearance Stage

- ▲ 62,000 ft² modern agricultural facility owned by MMJ
- ▲ 40,000 ft² cultivation space across four interior bays
- ▲ Will utilize proprietary vertical cultivation system
- ▲ Ample power and water and is situated adjacent to a CN rail line
- ▲ Building specs at or near MMPR requirements
- ▲ 18-acre site provides MMJ with scalability



Revenue Today Swiss Made Nutritional Supplement

- ✓ **Proprietary Delivery Technology Exclusively Licensed to Satipharm**
 - Exclusive licensing of proprietary Gelpell Microgel technology with superior bioavailability
 - Technology provides solution for known issues with oral delivery of cannabinoids
- ✓ **First To Market Pharmaceutical Grade Product Available to Consumers in the EU**
 - First and only product on the market with a pharmaceutical grade GMP production and supply chain
- ✓ **Currently Generating Revenue**
 - Product has been launched Q1 2016
 - Satipharm has recently increased its management team with experienced pharmaceutical personnel to foster sales and marketing





- ✓ **PhytoTech Therapeutics ('PYL') is focused on cost-effective, fast-to-market oral prescription drugs**
 - Specifically, unique oral drugs based on major active cannabinoids
- ✓ **PYL have overcome the two major roadblocks to organic cannabis-based pharmaceuticals**
 - Secure, legal and scalable supply of raw input– MMJ's integrated "Farm to Pharma" supply chain will insure a sufficient, timely and standardized supply of raw cannabis plant material
 - Standardized and efficient administration routes – MMJ has exclusive global licenses on two oral capsule formulations that overcome bioavailability and standardization issues associated with consumption of cannabis – Licensed from the Hebrew University and Gelpell®
- ✓ **Successful Phase 1 trial demonstrated Definite advantages over Sativex^{RX}**
- ✓ **Two Products now in development and progressing to Phase 2 Trials Q4 2016/Q1 2017**
 - PTL101 - Oral drug to treat seizures of pediatric patients with refractory epilepsy
 - PTL201 - Oral drug to treat spasticity of Multiple Sclerosis patients

Benefits of an Oral Capsule Over Oral Mucosal Spray

- Increased patient compliance
- No side effects like lesions, mouth ulcerations, pain and soreness of the oral mucosa
- Decreased administration frequency
- User friendly, no adverse taste, longer shelf life, lower cost
- Room temperature storage





Safety & PK Results of THC:CBD Formulations in Comparison to Sativex

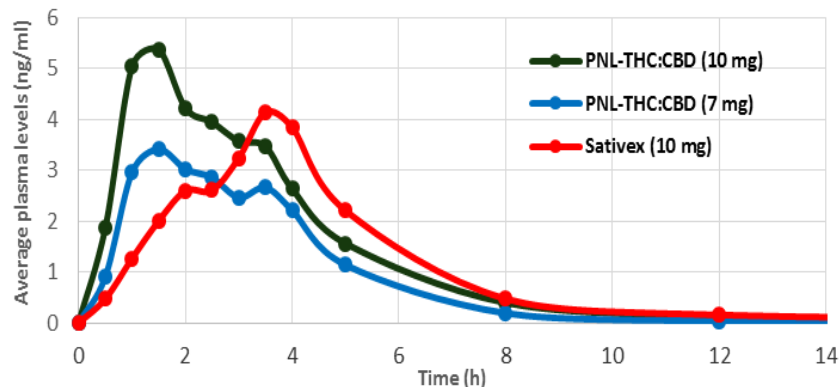
Phase 1 Trial Overview

- Trial sponsored by Phytotech Therapeutics
- Multi-arm, randomised, crossover study
- 14/15 completers
- Undertaken at Sourasky Medical clinic site
- Pre-cursor to Phase 2 clinical trial for the treatment of pain and spasticity for MS

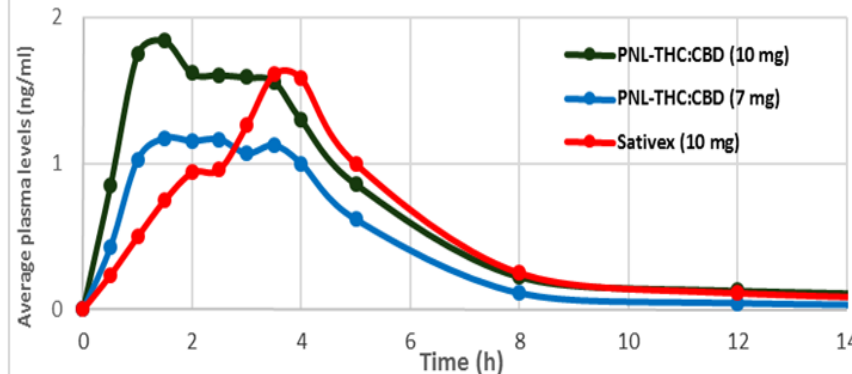
Phase 1 Trial Results

- Demonstrable safety and tolerability profile with no significant side effects
- Higher bioavailability (1.2-1.3x) of active compounds in comparison to GW Pharmaceuticals oromucosal spray – Sativex
- Very rapid onset
- 8 hours exposure time in the blood

Comparison of THC Plasma Profile



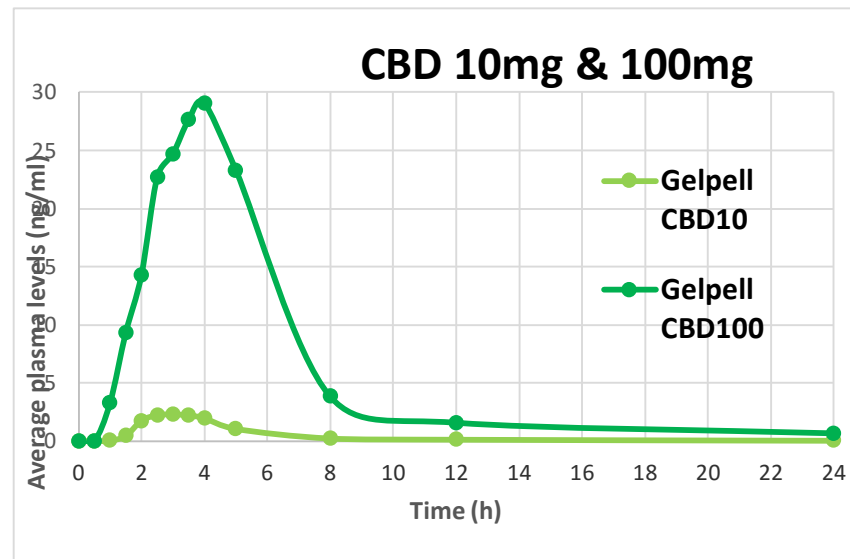
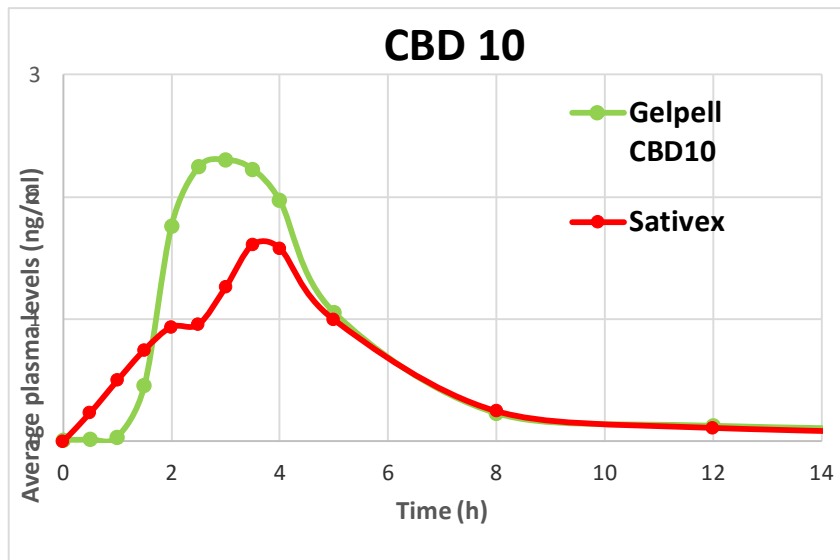
Comparison of CBD Plasma Profile



Completion of the Phase 1 clinical trial shows a definite advantage over Sativex...



Safety & PK Results of Gelpell CBD Formulations



- Safe and tolerable profile with no significant side effects
- Consistent results
- 1.3 (134%) fold higher bioavailability of CBD 10 mg in comparison to 10 mg CBD in Sativex
- Perfect proportionality between CBD 10mg & 100mg
- 24 hours exposure time in the blood of CBD 100mg

MMJ is Rapidly Progressing Two Products to Phase 2

Study	THC/CBD:Gelpell for relief of pain and spasticity due to MS	CBD:Gelpell for reducing seizure frequency in pediatric refractory Epilepsy
Description	A double-blind, randomized, placebo-controlled, parallel-group study of Gelpell Microgel Capsules THC:CBD in subjects with symptoms of pain & spasticity due to MS	An open label safety, tolerability and efficacy study of oral PTL 101 capsules in pediatric refractory epilepsy patients
Objective	Efficacy	Safety & Efficacy
Subjects	~60 MS patients	~15 pediatric patients with refractory epilepsy
Duration	~10-12 weeks; Initiated H2, 2016 - completed H1, 2017	Initiated Q4, 2016 – completed 2017
Cost	~US\$750K	~US\$710k



Appendix

Duncan Facility Cultivation Area



~ 10,000 ft² of cultivation area across three separate cultivation rooms will yield up to 1,000 kg/year of MC

Key Equipment Installations



Automated Irrigation System



Indoor Incinerator



Servers for Security Surveillance System

The Vault / Laboratory



Inside the Vault



Vault Door



In-House QA / QC and Analytics Laboratory