

MEDIA RELEASE

LPI.ASX

24 July 2019

WA EXPLORATION ACTIVITIES: TABBA TABBA DRILLING PROGRAM COMMENCED

- **Lithium Power International has commenced its initial drilling at the company's 100% owned Tabba Tabba Lithium project, located along the Tabba Tabba shear zone, which hosts important historical tantalum mineralisation and lithium discoveries.**
- **4000 m of RC drilling is planned to test pegmatite targets in three parallel greenstone belts, with pegmatites located within an area of elevated lithium and other geochemistry over 4.3 km of strike.**

Lithium Power International Limited (LPI or the Company) is pleased to advise the initial Tabba Tabba drilling program has commenced this week with up to 4000 m of reverse circulation (RC) drilling planned to test outcropping pegmatites located in geochemical surveys (Figure 1). The drilling may also extend into the nearby Strelley property.

Previous geological mapping and evaluation of the soil geochemical survey identified areas of outcropping pegmatite hosted in mafic schist and mafic intrusives. The largest area of elevated soil geochemistry extends over 4.3 km in the easternmost greenstone belt, with additional outcrops of pegmatite located in the western and central greenstone belts in the property.

The drilling program is designed to target the most prospective areas within the soil geochemical survey, where outcrops of lithium-bearing pegmatites are surrounded by shallow cover. Results will be finalised and available within 3Q19 following completion of the drilling program.

The Tabba Tabba and Strelley tenements are 100% owned by LPI, with Tabba Tabba located just 70 km and Strelley 40 km southeast of Port Hedland, a major port through which new lithium producers in the Pilgangoora area are shipping spodumene concentrate.

Lithium Power International’s Chief Executive Officer, Cristobal Garcia-Huidobro, commented:

“The commencement of the Tabba Tabba drilling program is aligned with LPI’s stated objective of being a diversified lithium developer. Our Tabba Tabba project is located in a known lithium belt in the Pilbara, with two recent lithium discoveries. The project has excellent logistics and proximity to Port Hedland, and we look forward to providing drilling results once they become available”.

Tabba Tabba Project Background

LPI’s Tabba Tabba tenement covers 56 km² over three greenstone belts that are located along the regional Tabba Tabba shear zone, a major fault structure that is associated with lithium, tantalum, gold and base metal mineralisation. The project is located approximately 70 km southeast from Port Hedland and has road access close to the Great Northern Highway.

The tenement is immediately adjacent and along strike from the lithium project being drilled by FMG, who is now exploring for lithium globally. The project is also located NE along strike from the historical Tabba Tabba tantalum mine. The belt has previously been explored for gold and base metals, but not for lithium.

For further information, please contact:

Cristobal Garcia-Huidobro – CEO; or Andrew Phillips – CFO

Lithium Power International

E: info@lithiumpowerinternational.com

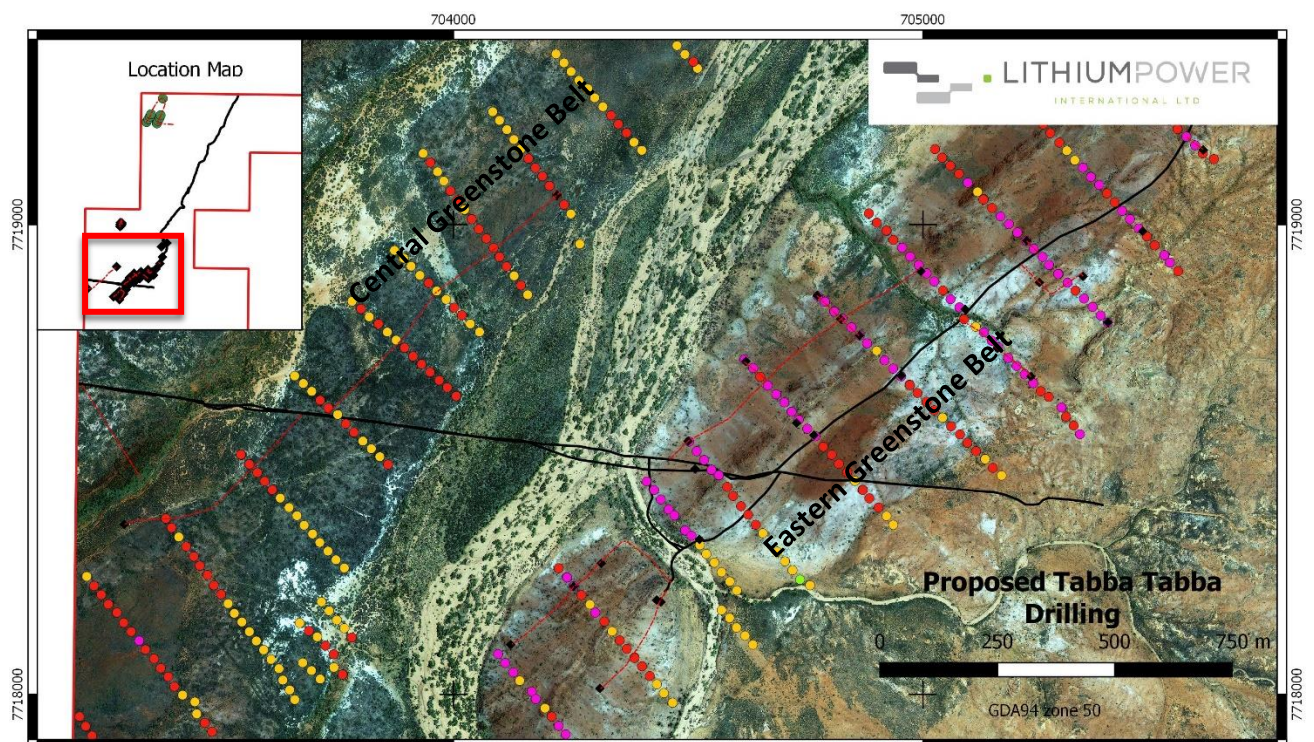
Ph: +612 9276 1245

www.lithiumpowerinternational.com

@LithiumPowerLPI

Figure 1: Tabbatabba Li₂O ppm in soils map, showing geochemistry (coloured dots) and the location of planned drill holes (black dots).

Note: the area of this map with the majority of the drilling is in the Eastern greenstone belt, shown in the red outline in the inset map that shows the outline of the northern part of the tenement



Legend

- | | | |
|--------------------|-------------------------|-----------------|
| --- Planned Tracks | Li ₂ O Soils | ● 50 - 100 ppm |
| ◆ Planned Holes | ● 0 - 25 ppm | ● 100 - 200 ppm |
| — Existing Tracks | ● 25 - 50 ppm | ● 200 - 689 ppm |