

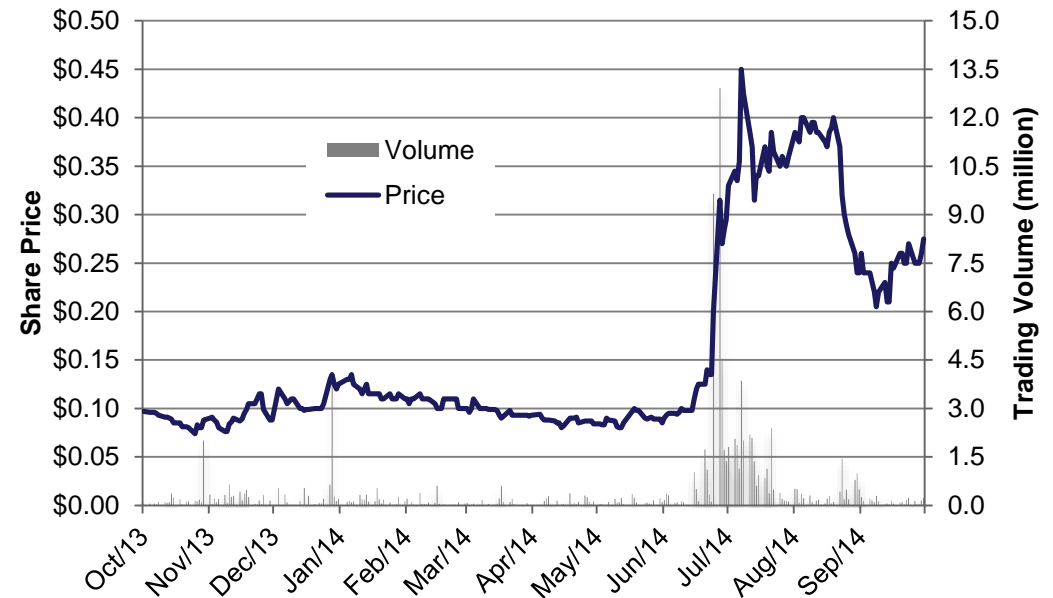
A photograph of a mining site in a dry, arid landscape. In the center is a large, leafy tree with a white-painted trunk. To the left is a tall, rusted metal lattice tower. To the right is a large, rusted cylindrical tank. The ground is rocky and sparsely vegetated. The sky is clear and blue.

Jervois Copper Project Mining 2014

29 October 2014

Corporate Overview

ASX code	KGL
Issued shares	140.0 million
Options	4.3 million
Average daily volume	0.4 million
Market capitalization (24 Oct 14)	\$38.5 million
Cash (30 Sep 2014)	\$12.8 million
Debt	Nil
Enterprise Value	\$25.7 million

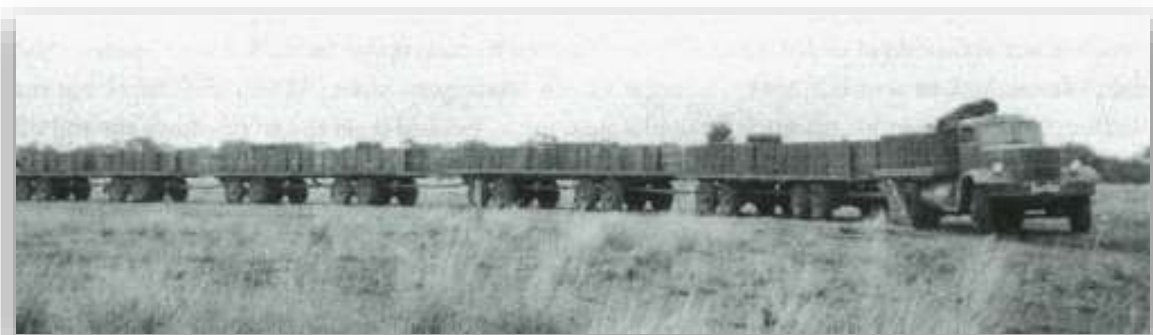
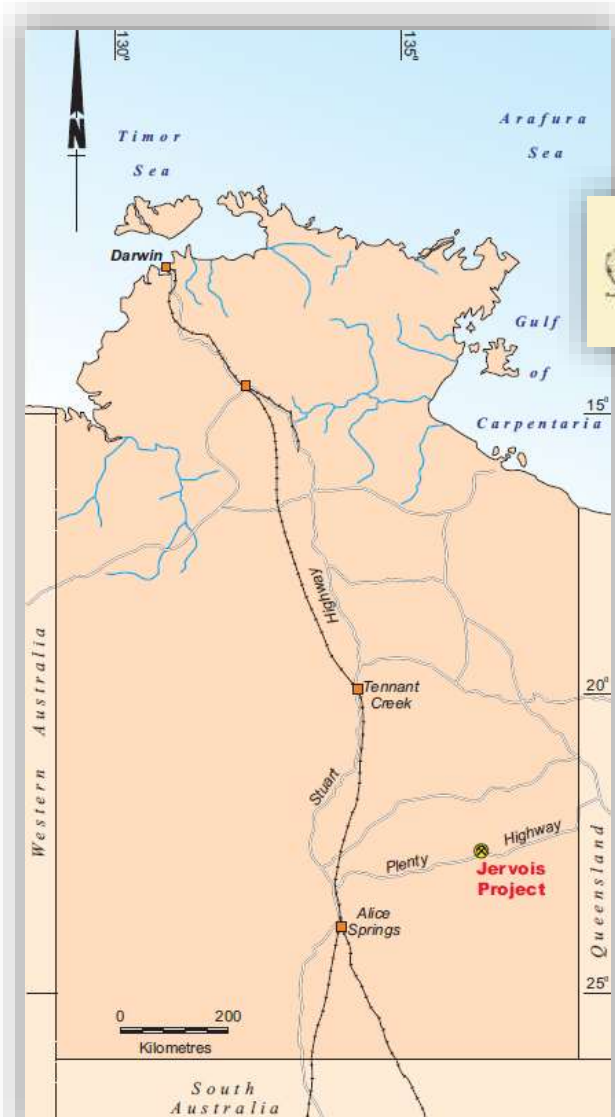


Top Shareholders	%
KMP Investments Pte Ltd	27.3%
HSBC Custody Nominees (Aust)	6.5%
JP Morgan Nominees Australia	3.9%
National Nominees	3.5%
Top 20 shareholders	59.5%

Board of Directors & Management	
Andrew Daley	Chairman
Simon Milroy	Managing Director
Chris Bain	Non-Executive Director
Brad Ellis	Non-Executive Director
John Taylor	Non-Executive Director

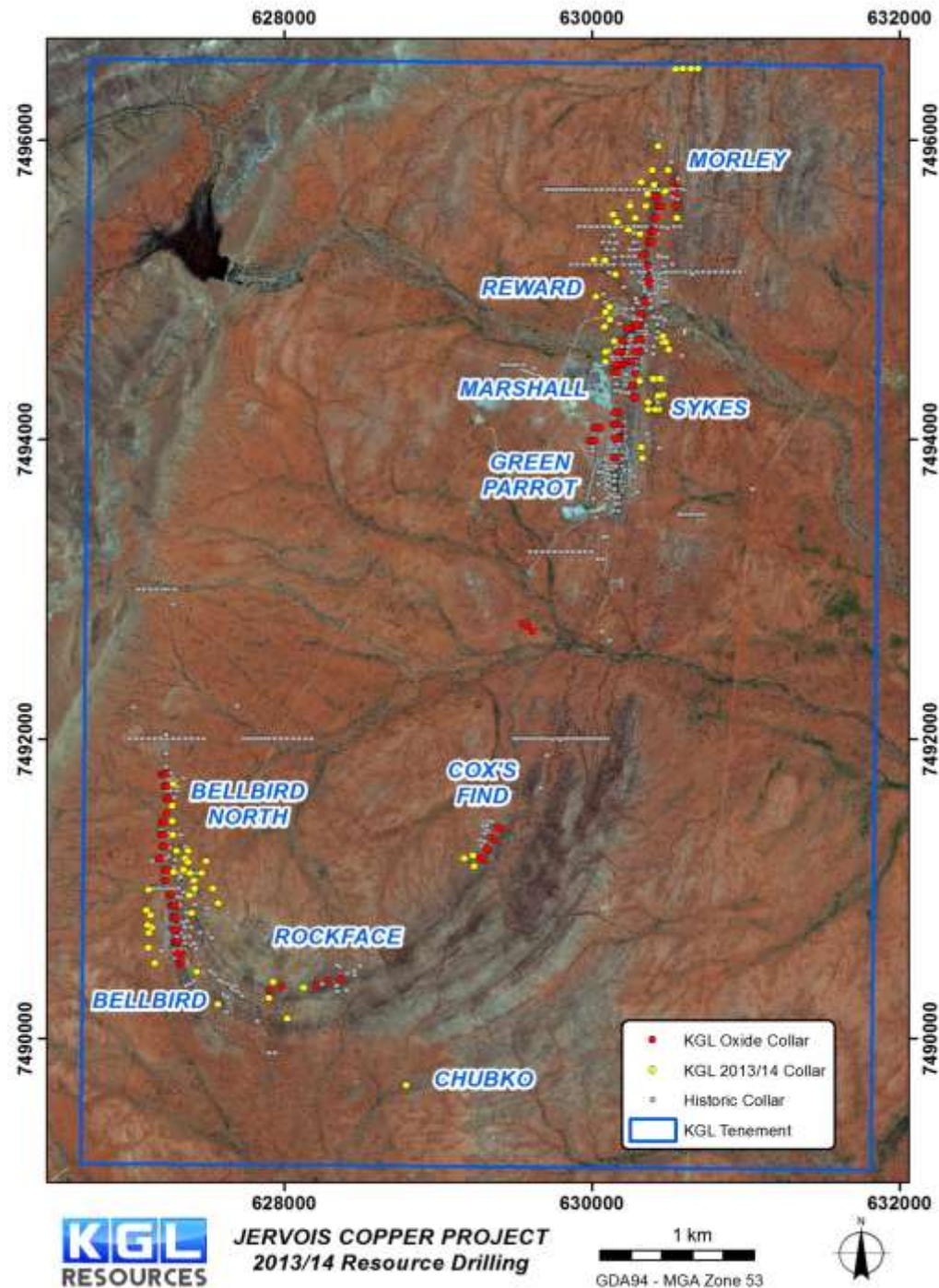
Jervois Project Setting

- On the Plenty Highway
- Concentrate to be trucked from site to Alice Springs then transported by rail to Darwin port
- In the 1960's, ore was trucked from Jervois to Mt Isa

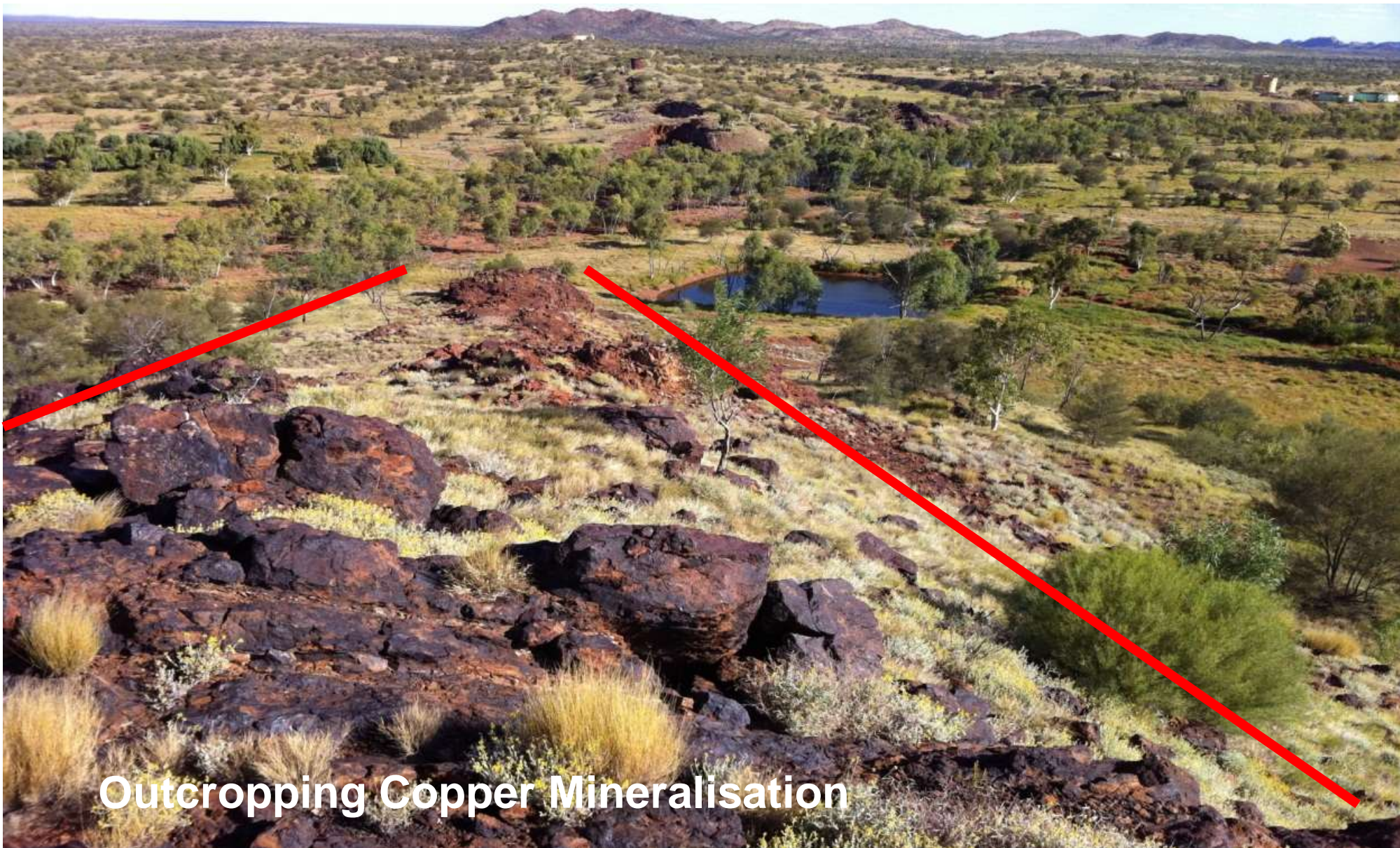


Jervois Project

- 12km strike length
- Pre-Feasibility Study scheduled for Q4 2014



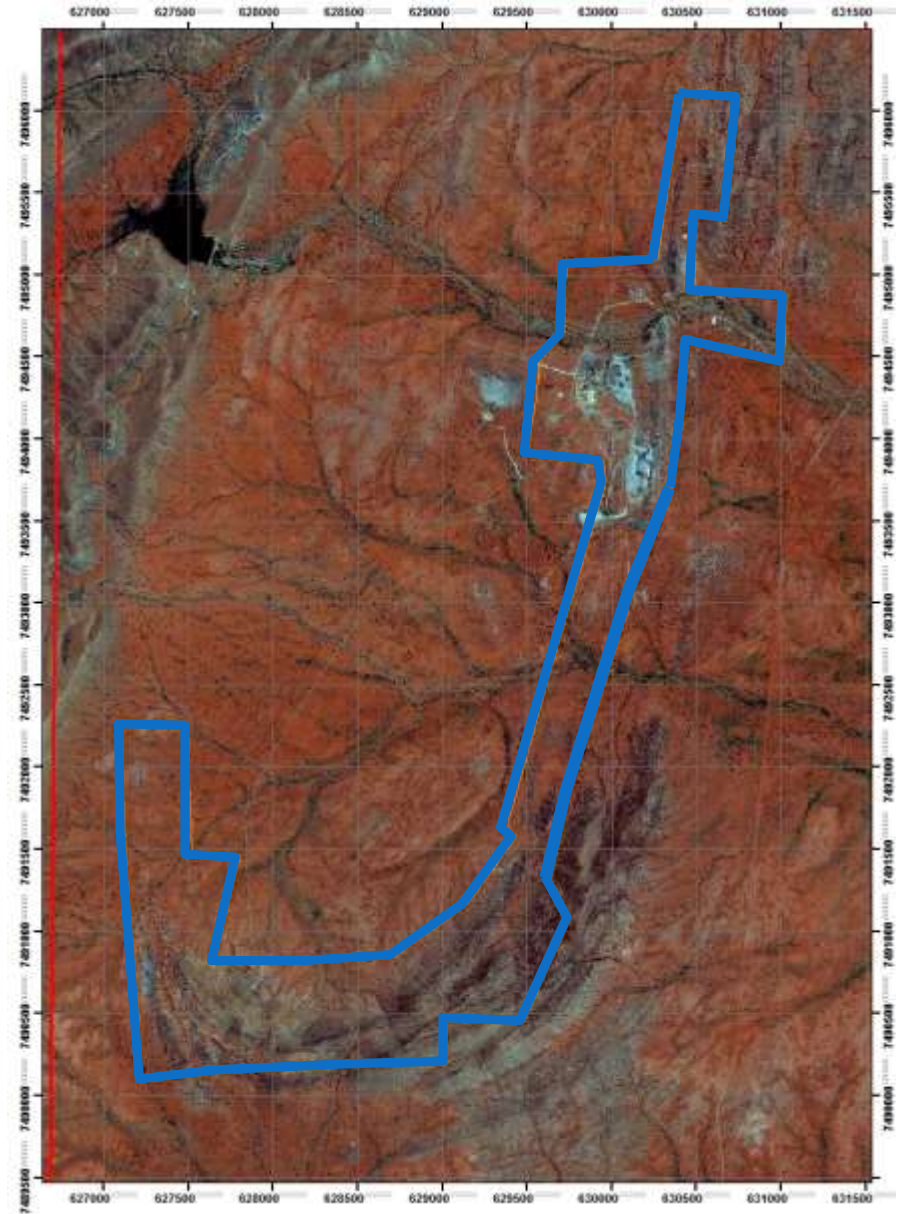
Reward Prospect looking south



Outcropping Copper Mineralisation

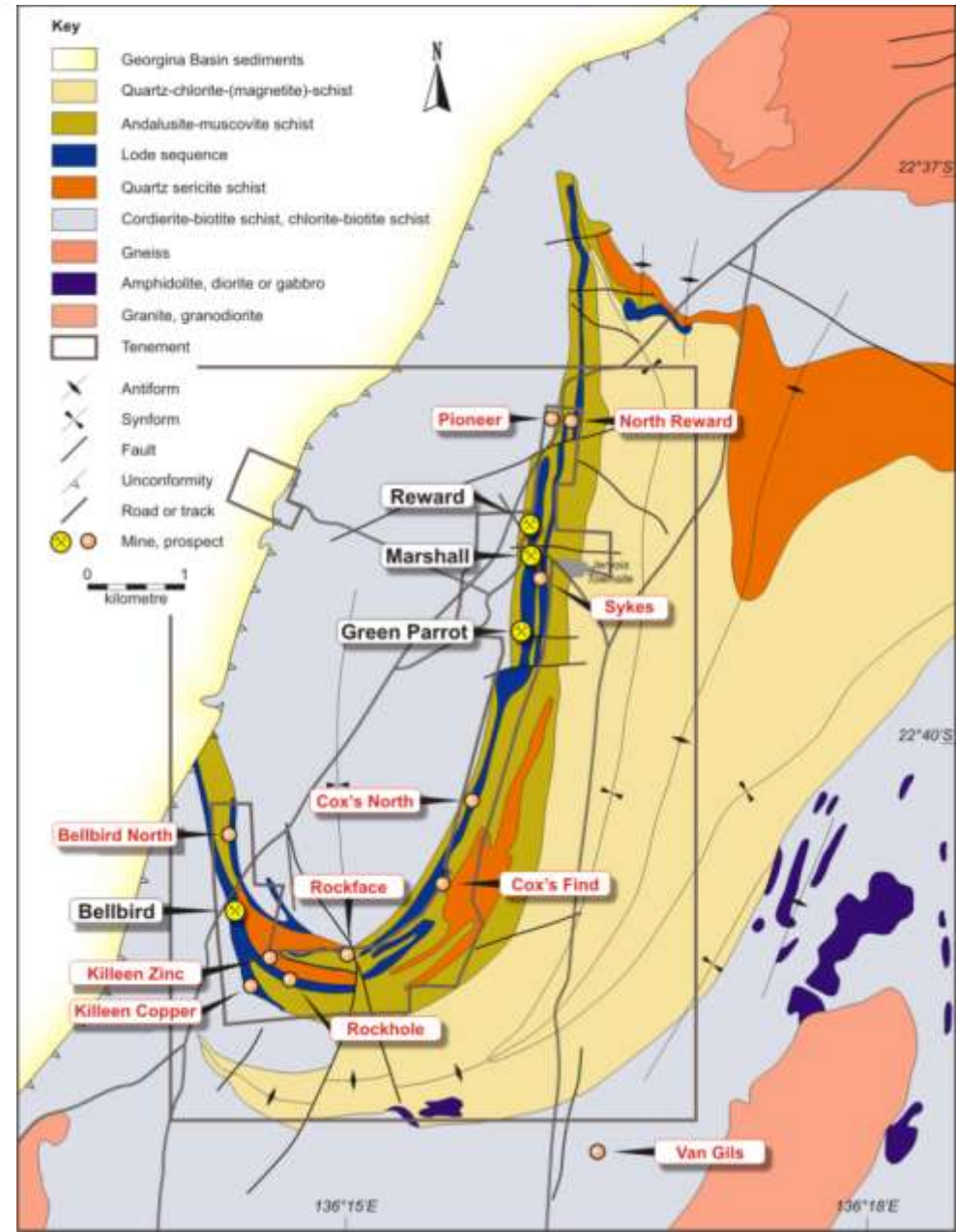
Jervois Project Setting

- Existing Mining Lease due to historical mining activities on site

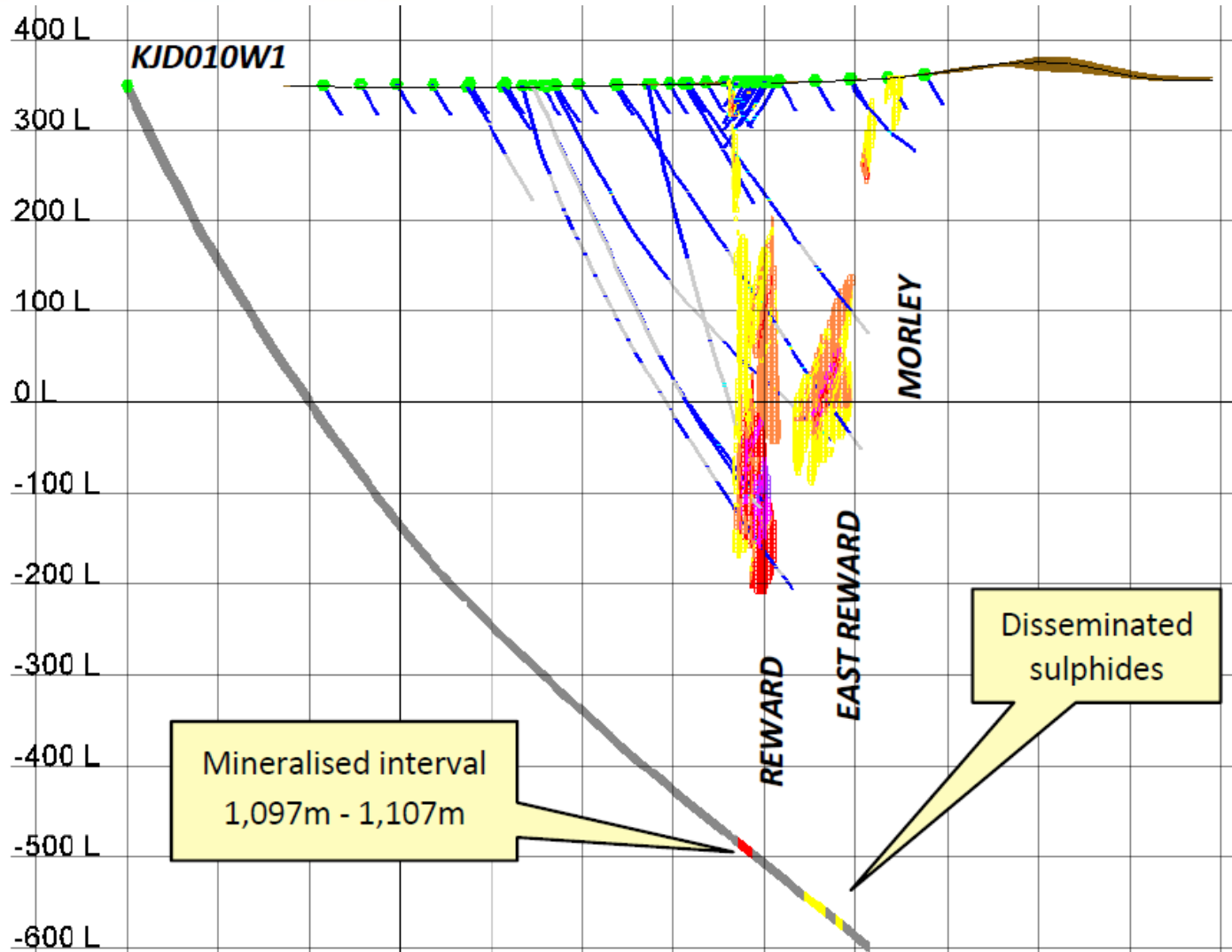


Geological Setting

- Hosted by Bonyra Schist in Eastern Arunta
- Northerly Plunging Syncline



Deep Drill Hole



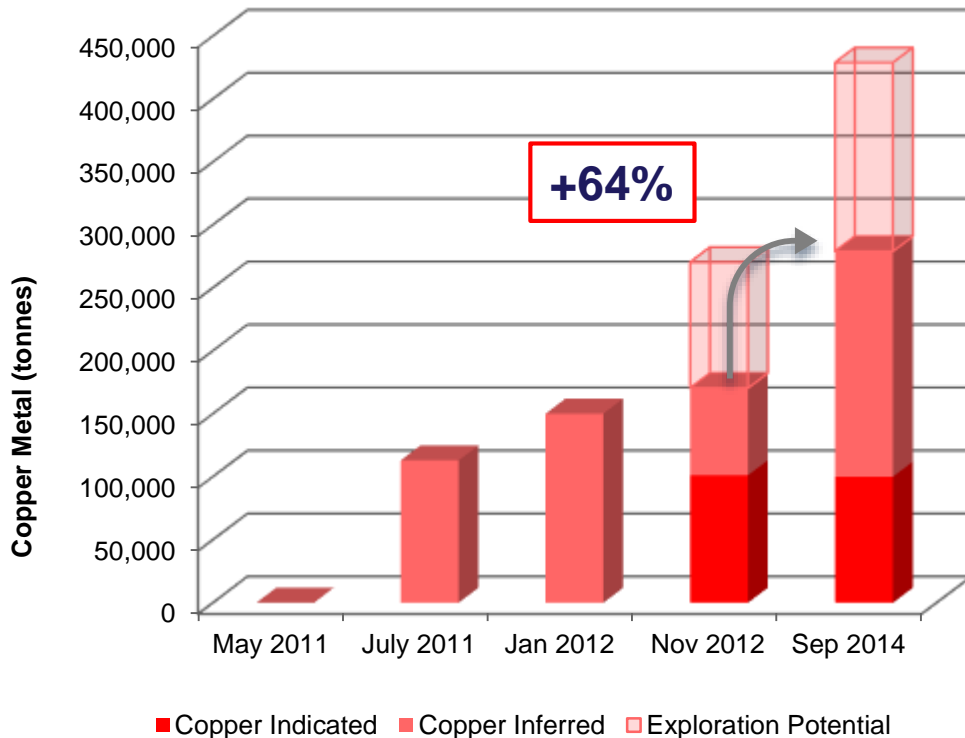
Copper mineralisation



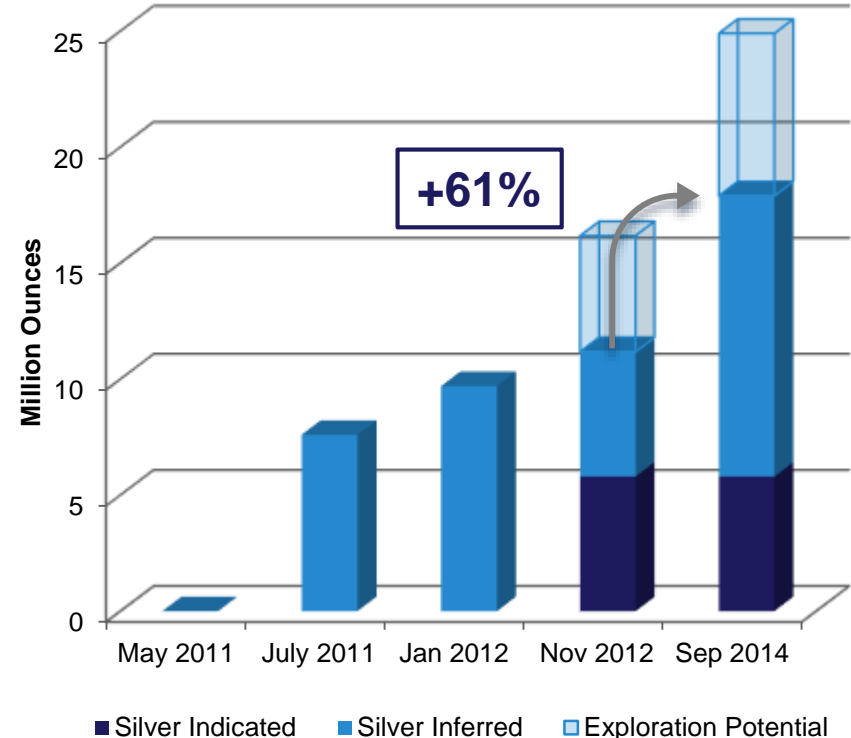
Lead and Zinc mineralisation

Mineral Resources Update

25.3 Mt @ 1.1% Cu for 280,000 t Cu

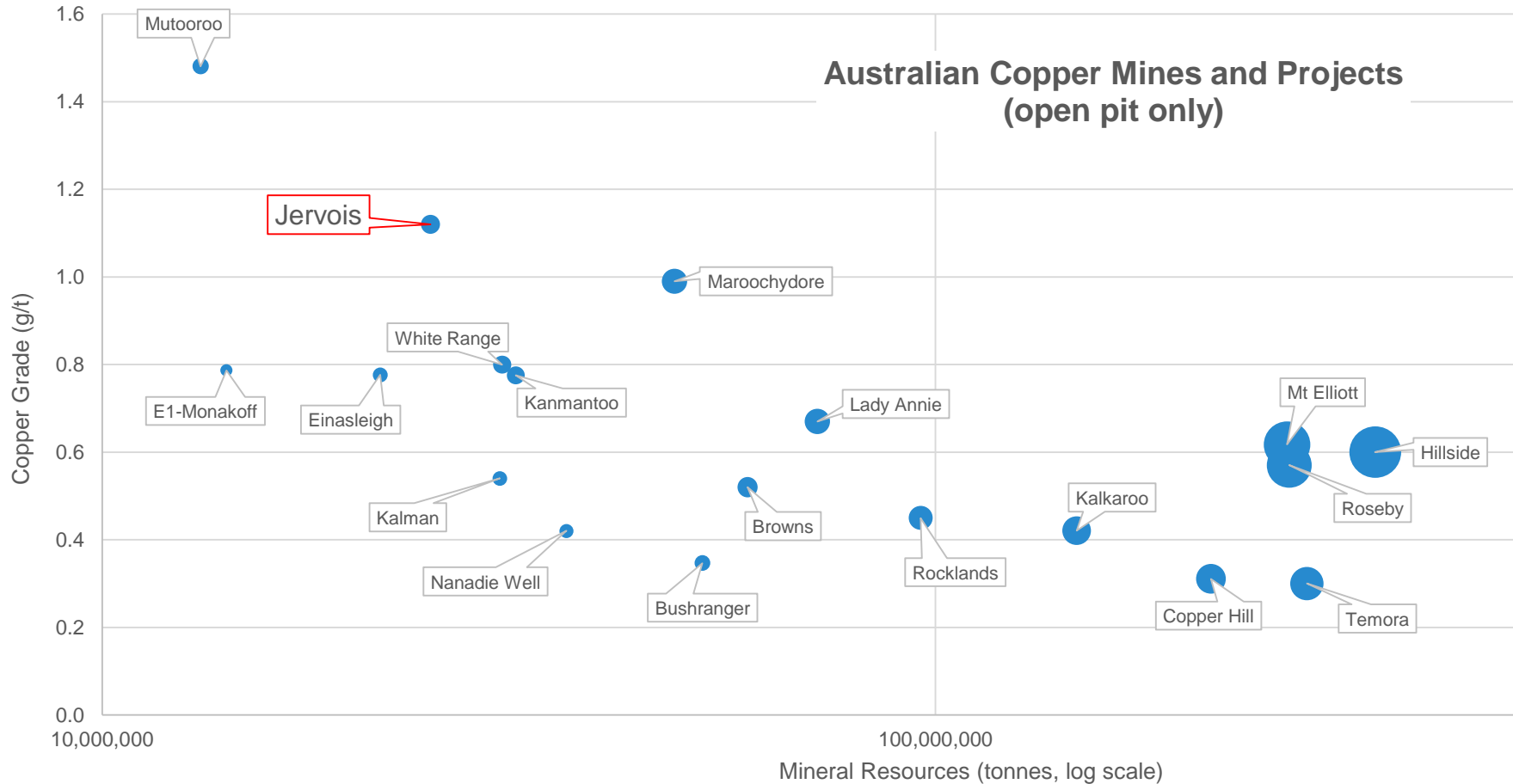


25.3 Mt @ 22 g/t Ag for 18 Moz Ag



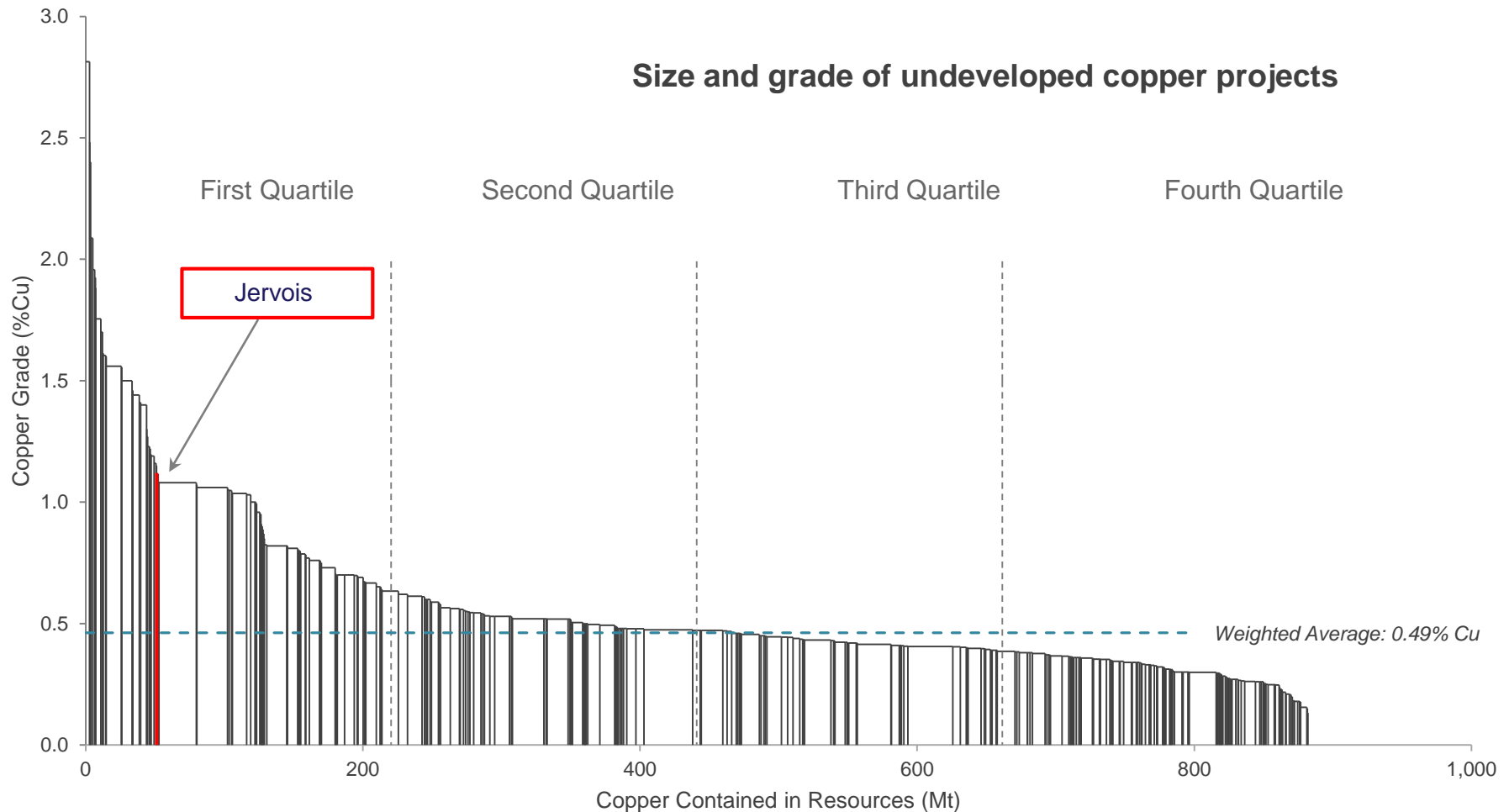
The potential quantity and grade of the Exploration Potential is conceptual in nature and there has been insufficient exploration to define a Mineral Resource. It is uncertain if further exploration will result in the determination of a Mineral Resource.

High Grade Resources



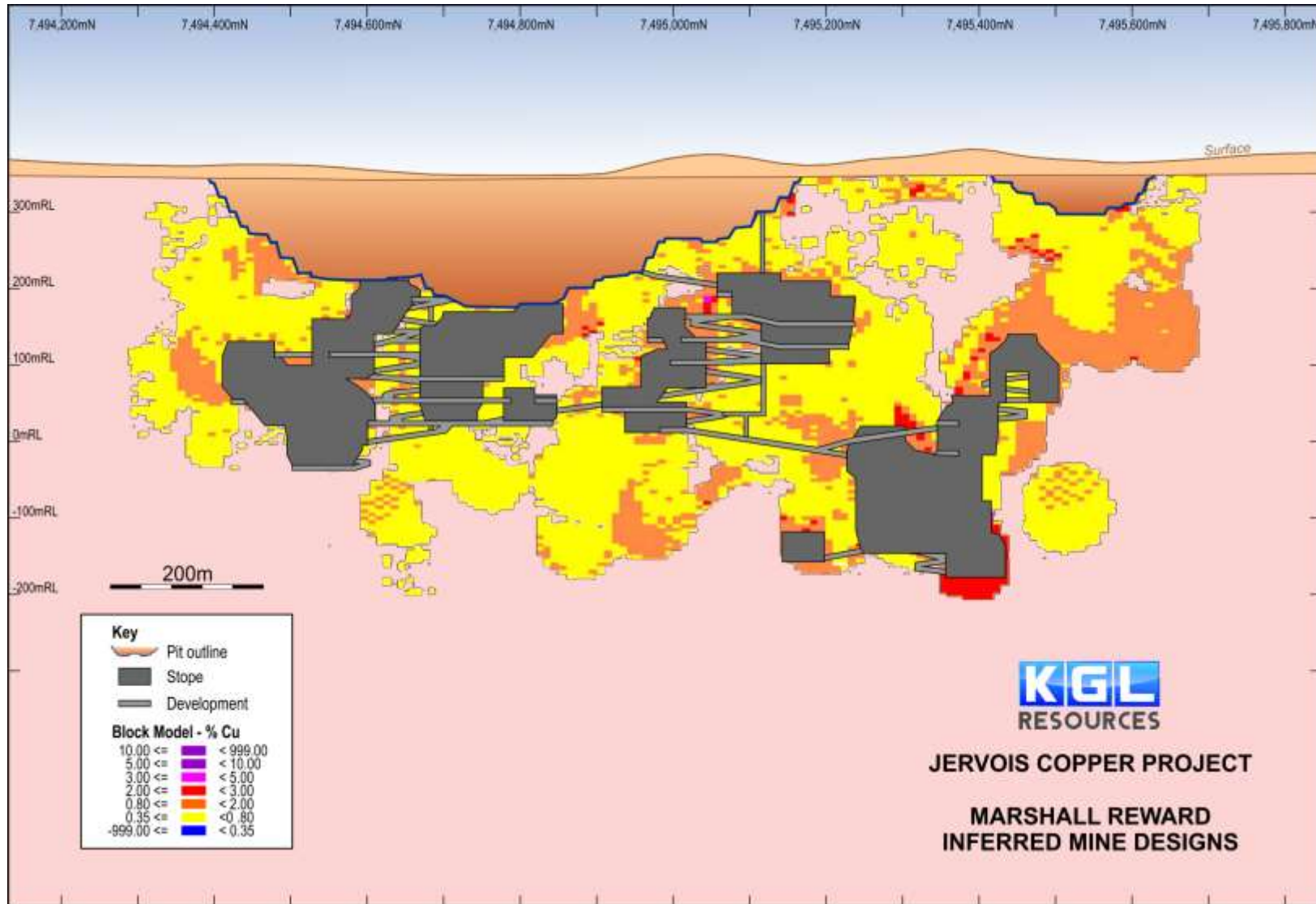
Source: SNL Mining & Metals, Terra Studio. Most recent mineral resources available, copper only. Bubble size according to copper metal contained.

High Grade Resources



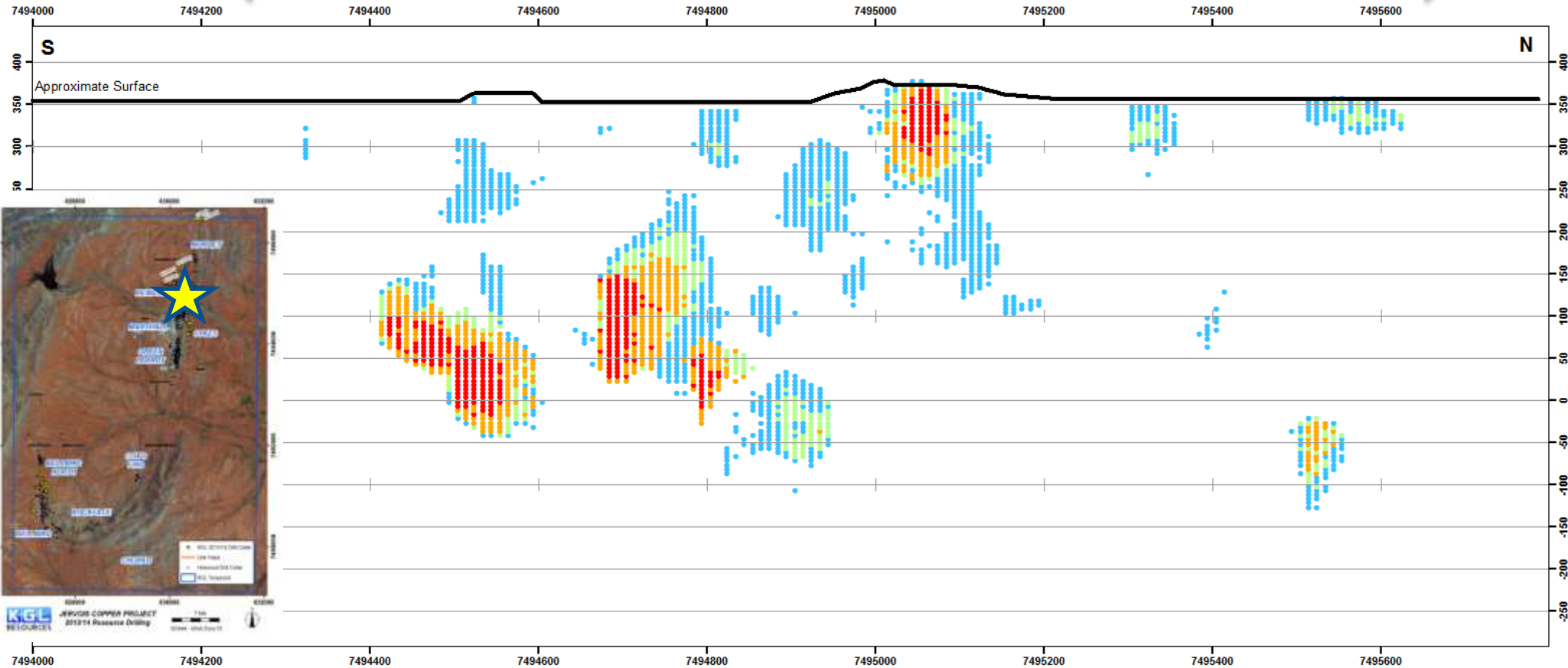
Source: SNL Mining & Metals, Terra Studio. Undeveloped copper projects with more than 250,000t of contained copper metal (open pit only)

Marshall Reward Open Pit & Underground Stopes



Marshall-Reward Lead+Zinc x Thickness

← 1.5 km strike length →



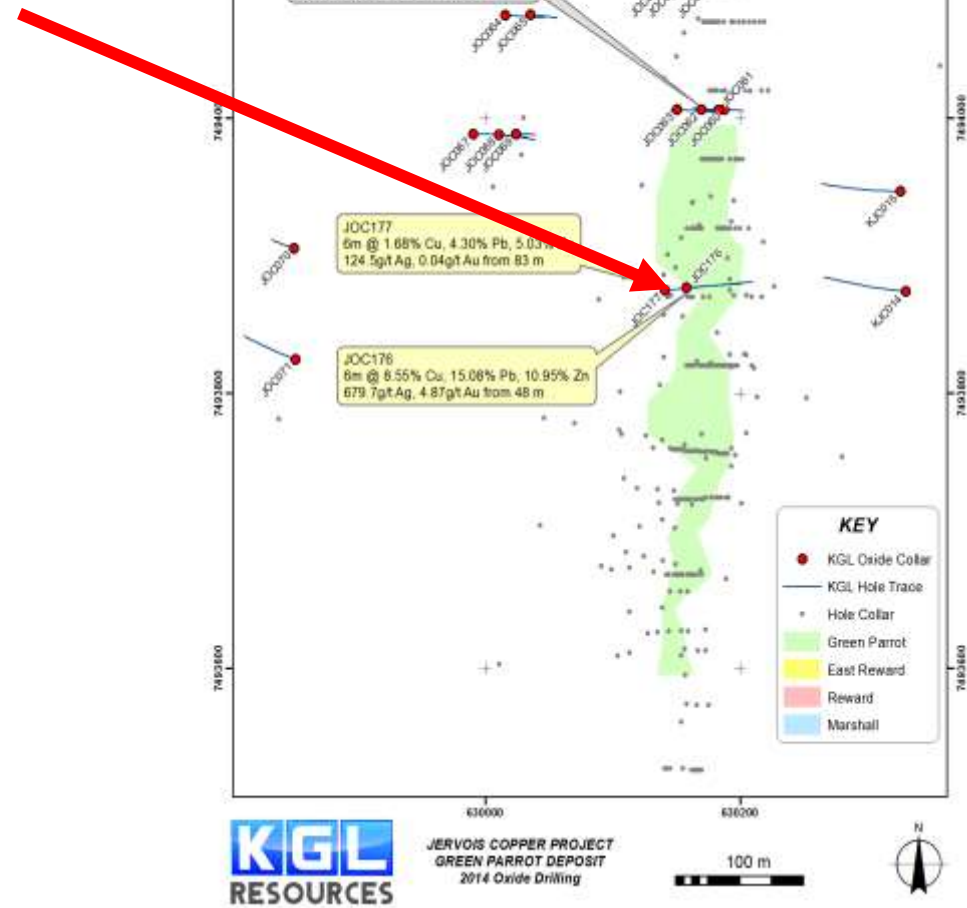
KGL RESOURCES Jervois Copper Project 2014 Resource Drilling

Jervois Copper Project
Marshall-Reward Long Section
2014 Resource
Lead + Zinc Grade * thickness

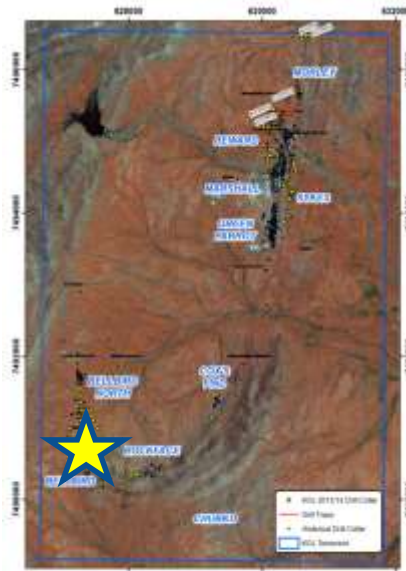
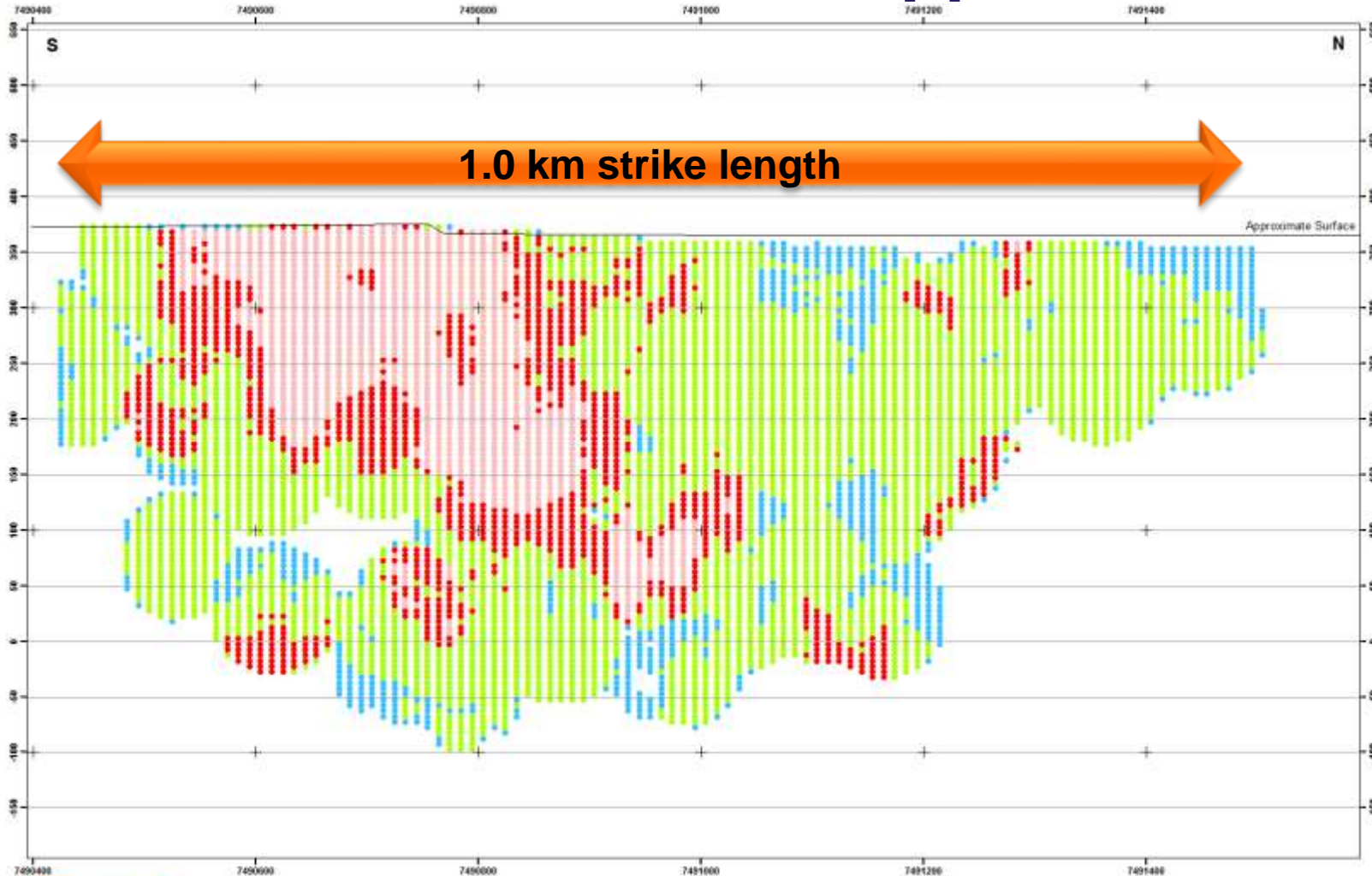


KEY					
0 - 10	11 - 20	21 - 30	31 - 60	61 - 210	

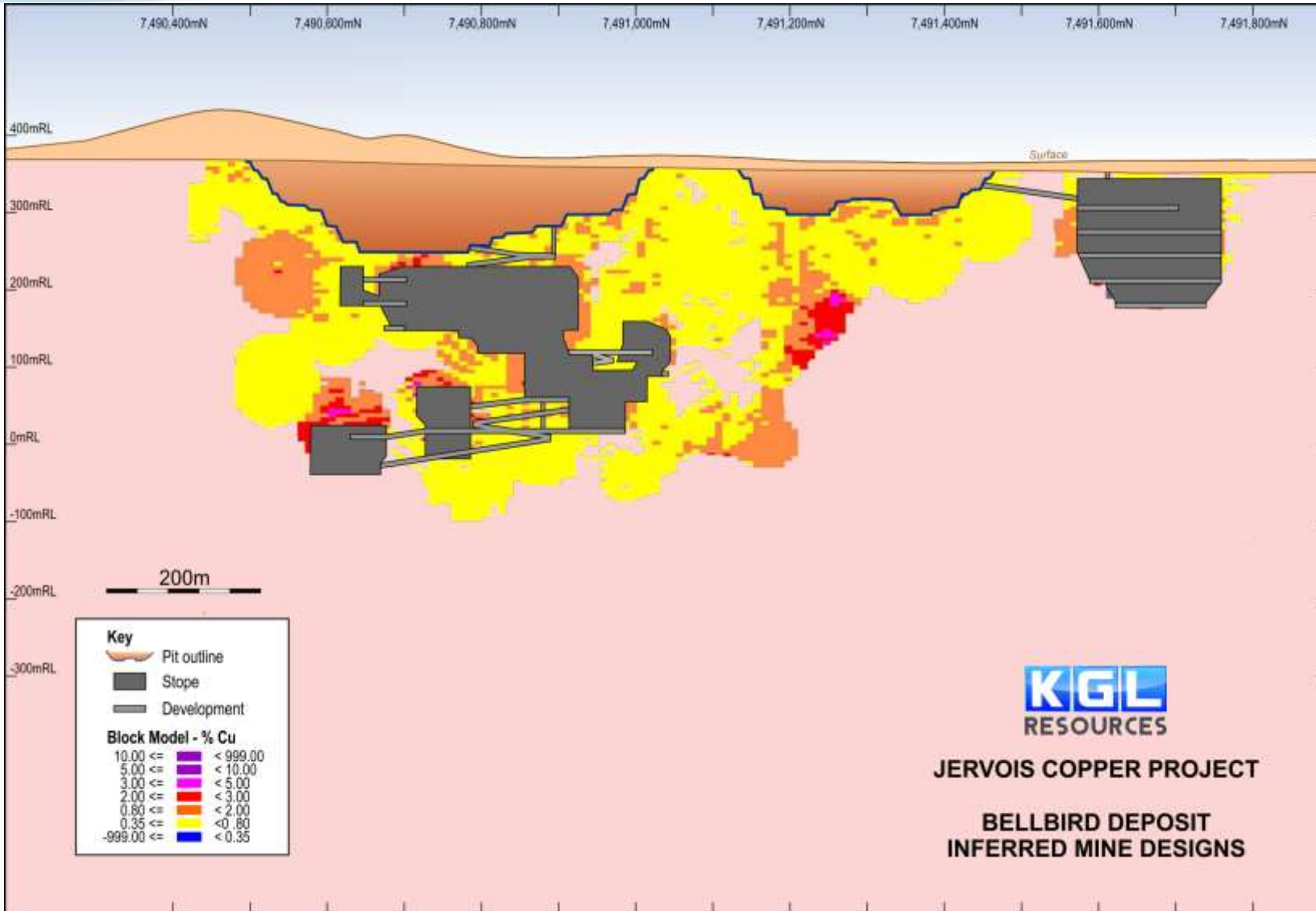
6m @ 8.55% Cu, 15.08% Pb, 10.95% Zn, 679.7g/t Ag, 4.87g/t Au from 48 m



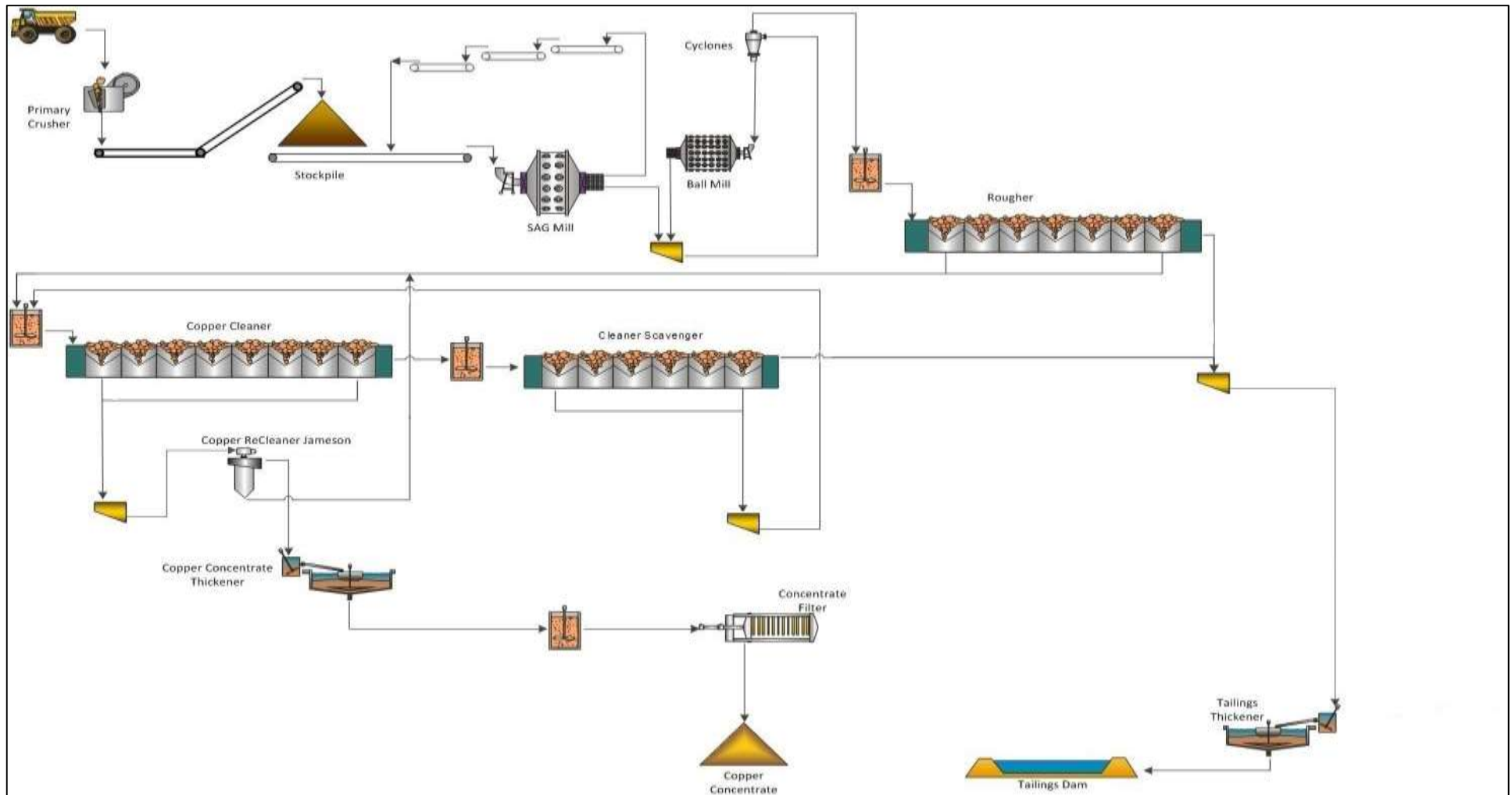
Bellbird Copper Grade x Thickness



Bellbird Open Pit & Underground Stopes

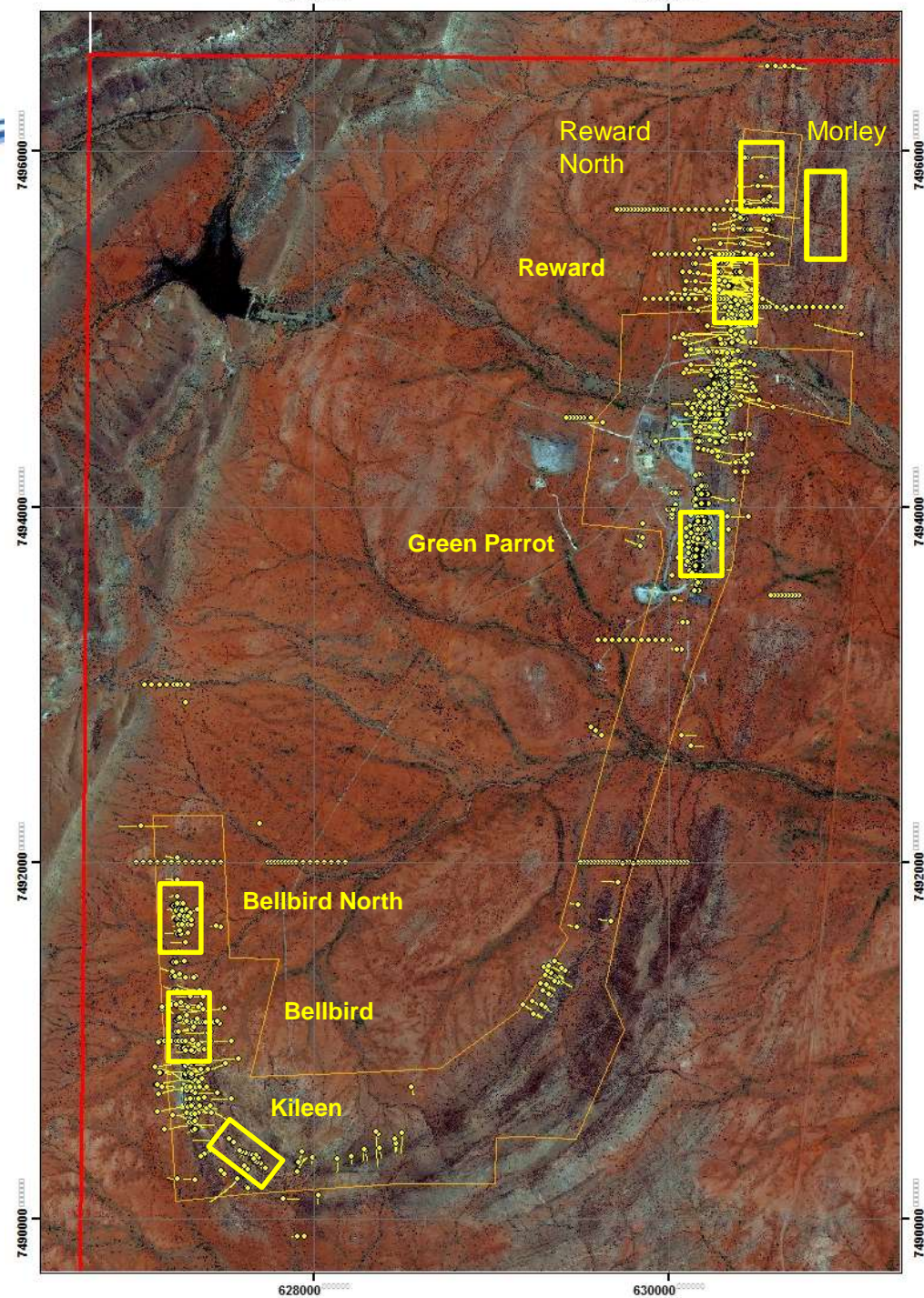


Jervois 2 mtpa Flotation Concentrator



Recent Drilling Areas

- 10,000m RC drilling just completed
- Awaiting assay results



Investment Highlights

- Significant resource upgrade
- Project in first quartile in terms of copper grade globally (open pit projects)
- One of the highest copper grade open pit projects in Australia
- Significant silver credits
- Lead and zinc resources
- RC programme completed
- Pre-Feasibility Study underway
- Strong cash position (\$12.8m as at 30 Sep 2014)



For more information contact

Simon Milroy on +61 7 3071 9003
or smilroy@kglresources.com
or visit www.kglresources.com

ASX code: KGL
Level 7, 167 Eagle Street
Brisbane, QLD 4000
AUSTRALIA

Forward-Looking Statements:

This presentation includes certain “Forward-Looking Statements”. All statements, other than statements of historical fact, included herein, including without limitation, statements regarding forecast cash flows and potential mineralisation, resources and reserves, exploration results and future expansion plans and development objectives of KGL Resources are forward-looking statements that involve various risks and uncertainties. There can be no assurance that such statements will prove to be accurate and actual results and future events could differ materially from those anticipated in such statements.

Mineral Resources

Jervois Copper Resources	Category	Tonnes Mt	Copper %	Silver g/t	Lead %	Zinc %	Copper kt	Silver Moz	Lead kt	Zinc kt	Cut-off Cu%
Marshall Copper	Indicated	1.2	1.52	38.7			18	1.5			0.5
	Inferred	0.4	1.18	26.2			5	0.3			0.5
Reward Copper	Indicated	3.7	1.11	24.8			41	3.0			0.5
	Inferred	6.8	1.08	26.5			73	5.8			0.5
East Reward	Inferred	2.3	1.01	8.3			23	0.6			0.5
Bellbird	Indicated	3.2	1.21	7.8			39	0.8			0.5
	Inferred	4.0	1.25	7.8			50	1.0			0.5
Cox's Find	Inferred	0.7	0.87	2.8			6	0.1			0.5
Rock Face	Inferred	0.7	0.82	3.1			6	0.1			0.5
Green Parrot Cu	Inferred	0.2	1.49	44.3			3	0.3			0.5
TOTAL	Indicated	8.1	1.21	20.1			98	5.3			
	Inferred	15.0	1.10	16.9			165	8.2			
	TOTAL	23.2	1.14	18.0			263	13.4			

Jervois Lead/Zinc Resources	Category	Tonnes Mt	Copper %	Silver g/t	Lead %	Zinc %	Copper kt	Silver Moz	Lead kt	Zinc kt	Cut-off Cu%
Marshall-Reward Lead/Zinc	Indicated	0.3	0.71	63.7	6.33	0.94	2	0.6	18	3	None
	Inferred	0.5	0.58	75.7	7.09	1.18	3	1.3	38	6	None
Green Parrot Pb	Inferred	0.9	0.90	85.3	1.91	1.21	8	2.3	16	10	0.3
Bellbird North	Inferred	0.5	0.65	21.3	2.30	3.38	3	0.3	11	17	0.2
TOTAL	Indicated	0.3	0.71	63.7	6.33	0.94	2	0.6	18	3	
	Inferred	1.9	0.75	65.9	3.49	1.76	14	4.0	66	33	
	TOTAL	2.2	0.74	65.6	3.87	1.65	16	4.6	84	36	

2014 Combined	TOTAL	25.3
2012 Combined	TOTAL	13.7
2014/2012	% Variance	85%

280	18.0	84	36
170	11.2	26	22
64%	61%	225%	63%

Competent Person Statement

- The Jervois Resources information was first released to the market on 15 September 2014 and complies with JORC 2012. The company confirms that it is not aware of any new information or data that materially affects the information included in the original market announcement and that all material assumptions and technical parameters underpinning the estimates in the relevant market announcement continue to apply and have not materially changed. The company confirms that the form and context in which the Competent Person's findings are presented have not been materially modified from the original market announcement.'
- The following drill holes were originally reported on the date indicated and using the JORC code specified in the table. Results reported under JORC 2004 have not been updated to comply with JORC 2012 on the basis that the information has not materially changed since it was last reported.

Hole		Date originally Reported	JORC Reported Under
JOC	177	14/08/2014	2012
JOC	176	14/08/2014	2012
JOC	56	18/07/2013	2012
JOC	62	18/07/2013	2012