



December 15, 2011

Completion of Infill Auger Drilling and BLEG Sampling

ASX Release: GNI

Global Nickel Investments NL ("Global Nickel", "the Company") is pleased to announce that the infill auger drilling and additional Bulk Leach Extractable Gold ("BLEG") sampling has now been completed on the structural gold corridor at the Jutson Rocks project, WA. Jutson Rocks is a relatively untested greenstone belt where the Company is looking for shear-zone hosted gold mineralisation. The project is approximately 30 kms to the NW of Gold Road Resources Limited's Central Bore project in the adjacent Yamarna greenstone belt and also borders Ausgold Limited's Winchester prospect.

A total of 241 infill auger drill samples as well as 160 BLEG soil samples have been collected at Jutson Rocks by the geological team. The auger drilling programme was designed to infill areas where encouraging results were obtained from the auger drilling programme of October this year. The BLEG samples were collected as part of a systematic programme of extending the BLEG sampling to the south as a follow up from earlier (May 2011) sampling which also produced encouraging results. Samples have been submitted to the laboratory for analysis and results are expected towards the end of January 2012.

Global Nickel has now conducted BLEG sampling over in excess of 50 km² or 5,000 hectares at 500m by 500m centres. Global Nickel is very pleased with the gold sampling techniques it has employed at the Jutson Rocks project, and looks forward to reporting the results as soon as they are received and compiled.

Managing Director Lia Darby commented, "Good progress is being made with the extension of the BLEG sampling to a greater area of our tenement package while the auger infill drilling will assist with our deeper drill campaign expected on the new anomalies soon."

Enquiries:

Lia Darby – Managing Director
Global Nickel Investments NL
Mobile: +61 (0)427 224 534
Email: lia.darby@globalnickel.com.au

Carl Swensson – Technical Director
Global Nickel Investments NL
Mobile: +61 (0)412 299 340
carl.swensson@globalnickel.com.au

Global Nickel Investments NL

Suite 1901, Level 19, 109 Pitt St
Sydney NSW 2000

ABN: 23 124 140 889

p +61 (0)2 9225 4050
f +61 (0)2 9232 5359

e info@globalnickel.com.au
w www.globalnickel.com.au



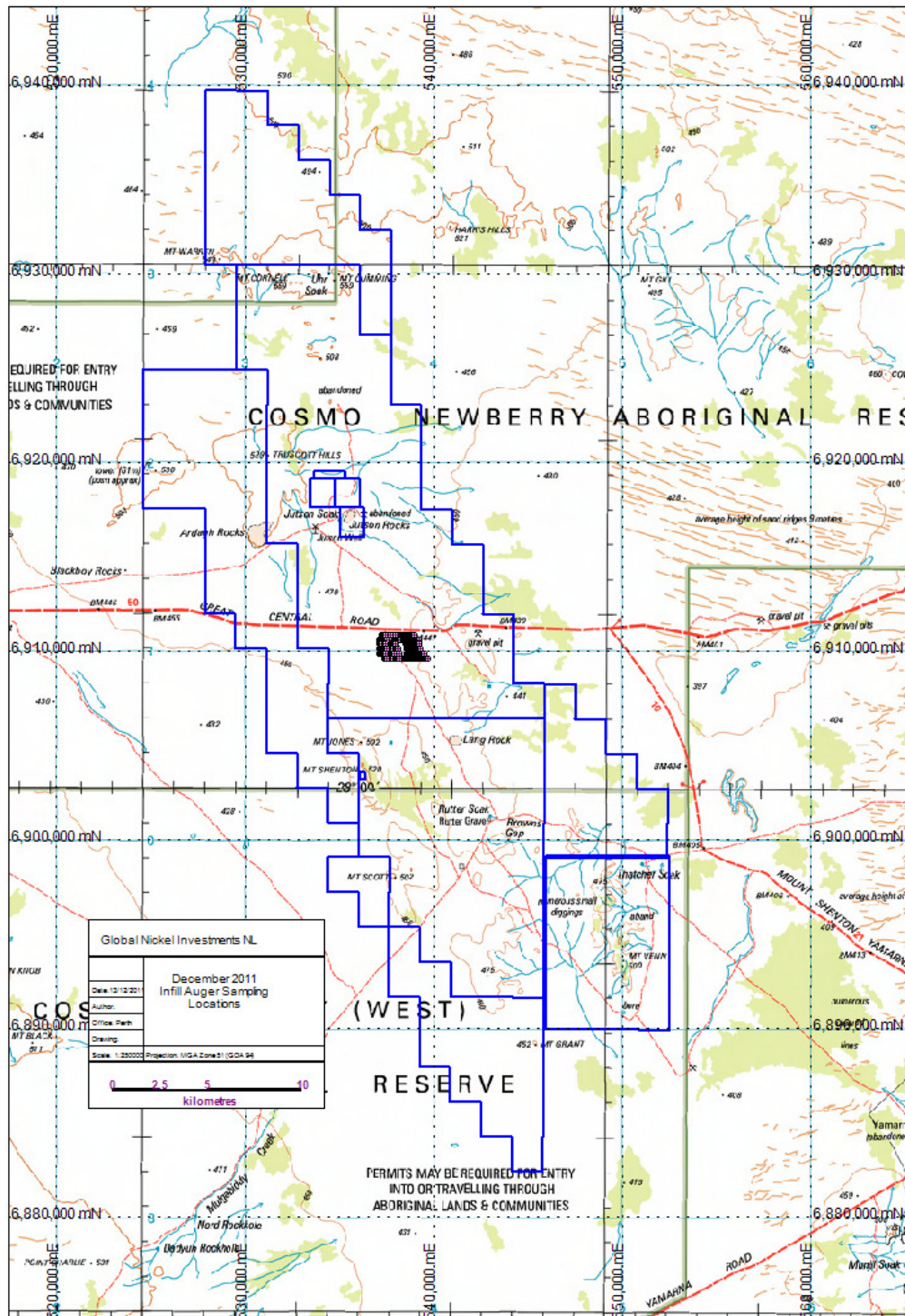
STOCK EXCHANGE ANNOUNCEMENT



Competent Person's Statement

The information in this release that relates to Exploration Results, Mineral Resources or Ore Reserves is based on information compiled by Mr Carl Swensson, who is a Member of the Australasian Institute of Mining & Metallurgy. Mr Swensson is the Technical Director for Global Nickel Investments NL and has sufficient experience relevant to the style of mineralisation and type of deposit under consideration and to the activity which he is undertaking to qualify as a Competent Person as defined in the 2004 edition of the "Australasian Code for Reporting of Exploration Results, Mineral Resources and Ore Reserves". Mr Swensson consents to the inclusion in the release of the matters based on his information in the form and context in which it appears.

STOCK EXCHANGE ANNOUNCEMENT



Global Nickel Investments NL

ABN: 23 124 140 889

