

QUARTERLY REPORT

Review of Activities, Period ending 30 June 2019

OVERVIEW

Alt Resources Limited (“Alt” or “the Company”) is pleased to provide shareholders its Activity Report for the Quarter ending 30 June 2019.

During this period, the Company has focussed on the Mt Ida Gold Project mining lease assets owned by the Company in particular to the Quinn’s and Tim’s Find mining leases undertaking comprehensive reviews of the historical data bases including the geophysical, geochemical and geological data.

Pursuant to the aforementioned reviews the Company lodged several program of works (POW) with the Department obtaining drilling approvals for all POW’s lodged in preparation for planned drilling programs.

RC drilling commenced on the Tim’s Find project in May 2019 with Challenge Drilling mobilising to site with drilling programs undertaken at the Tim’s Find, Shepherds Bush, Spotted Dog and Quinn’s Forrest Belle pit at the Mt Ida Gold Project running concurrently. The Company drilled a total of ~5500 metres of RC drilling across the various project areas from May to July 2019.

The Mt Ida and Bottle Creek Gold Project is rapidly evolving into a promising gold project, with multiple exploration and mining targets contained within the various exploration, prospecting and mining leases held by the Company.

PROJECTS

The Company continues to hold the Paupong exploration project in New South Wales, along with the Bottle Creek, Mt Ida, and Mt Roberts Cottee projects in Western Australia. During the report period the Mt Ida Projects incorporating the Quinn’s, Tim’s Find and the Shepherds Bush were the focus of the Company activities.

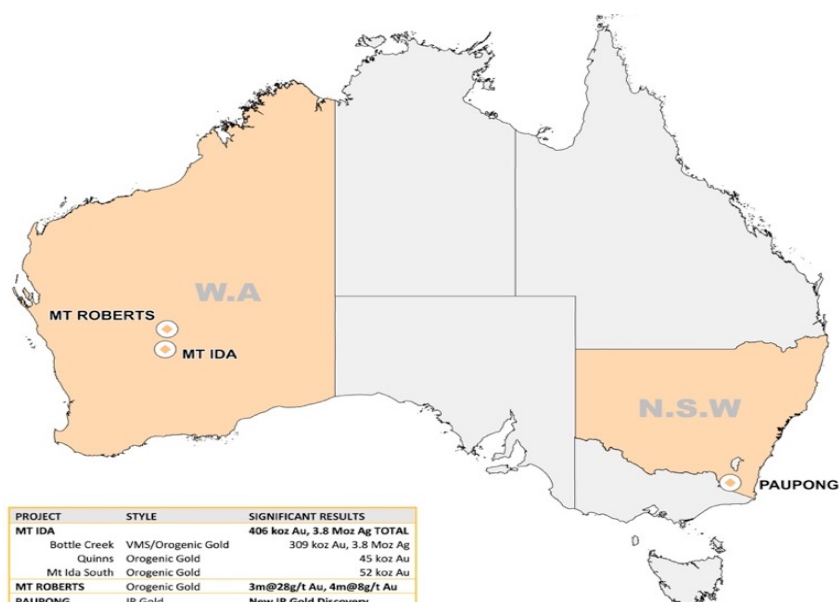


Figure 1: Location of Alt Resources' projects. See Appendix 1 for full tenement holding

MT IDA - WESTERN AUSTRALIA

TIMS FIND DEPOSIT

During the quarter the Company completed approximately 5500 metres of RC drilling at the Mt Ida Gold Project of which ~3000 metres was drilled at the Tim's Find deposit from approximately 72 RC holes drilled. Results for the first 20 holes drilled Tim's Find were announced 3 July 2019¹ and the balance of the Tim's Find drilling results delivered to market on 16 July 2019². 102 RC drillholes in total have been drilled across the greater Mt Ida Project at the Tim's Find, Shepherds Bush and the Quinns mining areas during the quarter.



Figure 1: Challenge Drilling at Tim's Find Mt Ida Gold Project

Positive gold results were received from 63 of the 73 holes drilled at Tim's Find with all significant results from drillholes displayed in Table 1 below.

The RC drill program confirmed grade and continuity of the gold mineralisation at Tim's Find deposit and the mining potential of the project area. The Company has undertaken additional drilling down strike to the south outside the current resource model generating encouraging results such as holes on sections AA - BB below. While sections CC - DD shows mineralisation in the central Tim's Find model area (Figures 2 – 5) Section locations are shown on Figure 6 in plan view

¹ https://www.altresources.com.au/wpcontent/uploads/2019/07/ALT_Resources_Tims_Find_Announcement_3Jul19.pdf

² <https://www.altresources.com.au/wp-content/uploads/2019/07/Tim's-Find-Intercepts-further-High-Grade-Gold-at-Mt-Ida-Gold-Project-1948022.pdf>

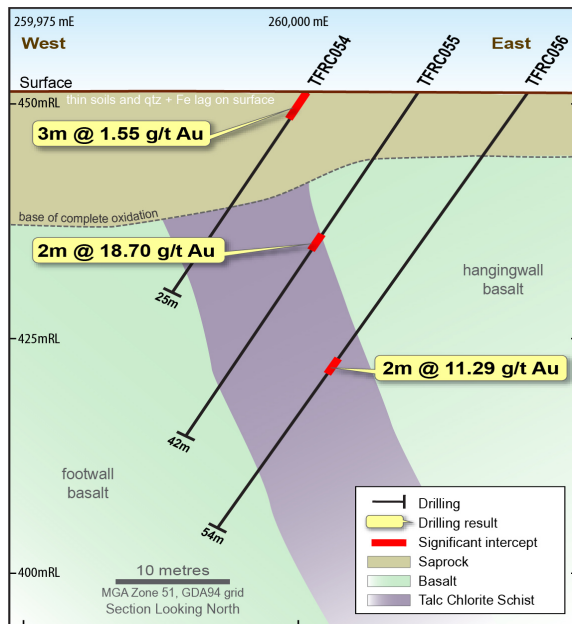
Table 1: Significant Intercepts Tims Find

Hole ID	m from	m to	Interval (m)	Au (g/t)	Hole Type	Prospect	Easting*	Northing	RL	Dip	Azi*	Depth
Tim's Find												
TFRC001	14	24	10	6.32	RC	Tim's Find	259852	6770743	452	-60	270	30
including	16	19	3	4.78								
including	20	22	2	21.53								
TFRC002	37	42	5	3.80	RC	Tim's Find	259862	6770743	452	-60	270	54
including	37	38	1	9.36								
including	41	42	1	8.01								
TFRC003	55	60	5	2.17	RC	Tim's Find	259872	6770743	452	-60	270	72
including	55	56	1	1.51								
including	58	60	2	4.48								
TFRC004	6	13	7	3.32	RC	Tim's Find	259842	6770772	452	-60	270	30
including	7	9	2	7.33								
including	11	12	1	3.97								
TFRC005	26	31	5	12.61	RC	Tim's Find	259852	6770772	452	-60	270	36
including	28	30	2	28.53								
TFRC006	41	47	6	2.42	RC	Tim's Find	259862	6770773	451	-60	270	48
including	41	42	1	6.01								
including	45	47	2	3.56								
TFRC007	11	18	7	5.90	RC	Tim's Find	259838	6770793	452	-60	270	30
including	12	14	2	5.54								
including	15	16	1	23.60								
TFRC008	29	33	4	2.27	RC	Tim's Find	259847	6770793	451	-60	270	36
including	29	30	1	5.31								
TFRC009	5	12	7	10.50	RC	Tim's Find	259828	6770811	452	-60	270	12
including	6	8	2	34.15								
TFRC010	23	25	2	3.80	RC	Tim's Find	259837	6770812	452	-60	270	30
TFRC011	36	39	3	0.76	RC	Tim's Find	259848	6770812	451	-60	270	42
TFRC012	21	24	3	6.04	RC	Tim's Find	259831	6770834	451	-60	270	30
TFRC013	no significant intercepts				RC	Tim's Find	259867	6770836	450	-60	270	54
TFRC014	no significant intercepts				RC	Tim's Find	259815	6770853	451	-60	270	18
TFRC015	11	12	1	0.68	RC	Tim's Find	259825	6770853	451	-60	270	30
and	21	25	4	4.29								
including	21	22	1	6.69								
TFRC016	37	40	3	6.02	RC	Tim's Find	259835	6770853	451	-60	270	48
TFRC017	no significant intercepts				RC	Tim's Find	259802	6770895	451	-60	270	24
TFRC018	12	12	1	0.93	RC	Tim's Find	259813	6770895	450	-60	270	40
and	26	28	2	2.33								
TFRC019	29	30	1	17.65	RC	Tim's Find	259823	6770896	450	-60	270	60
and	44	49	5	5.56								
including	45	47	2	11.43								
TFRC020	no significant intercepts				RC	Tim's Find	259793	6770915	451	-60	270	18
TFRC021	24	25	1	8.70	RC	Tim's Find	259814	6770916	450	-60	270	54
and	38	43	5	2.15								
including	41	43	2	4.61								
TFRC022	no significant intercepts				RC	Tim's Find	259779	6771030	450	-60	270	12
TFRC023	17	19	2	0.85	RC	Tim's Find	259799	6771030	450	-60	270	30
and	23	24	1	0.91								
and	28	30	2	1.41								
TFRC024	2	5	3	0.58	RC	Tim's Find	259785	6771012	450	-60	270	18
TFRC025	20	21	1	3.40	RC	Tim's Find	259795	6771012	450	-60	270	30
TFRC026	24	25	1	0.62	RC	Tim's Find	259807	6771012	450	-60	270	48

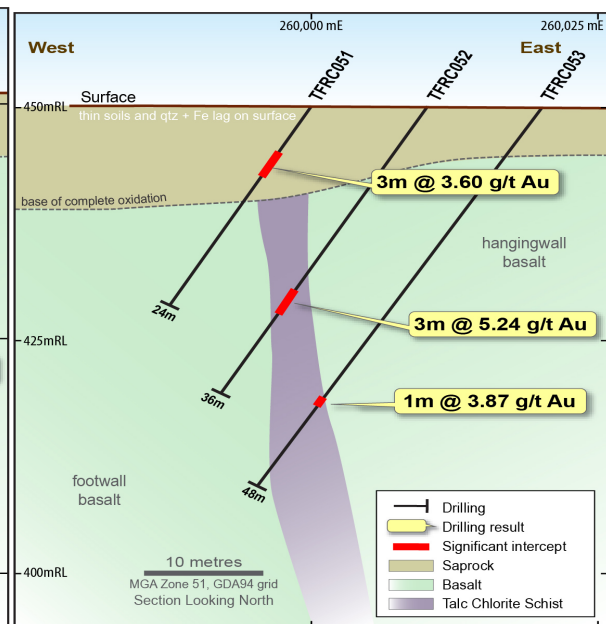
and	43	45	2	14.22								
TFRC027	32	45	13	2.35	RC	Tim's Find	259807	6771002	450	-60	270	48
and	33	34	1	5.64								
and	40	45	5	4.35								
including	42	44	2	8.88								
TFRC028	4	13	9	5.73	RC	Tim's Find	259788	6770981	450	-60	270	24
including	6	9	3	12.42								
TFRC029	12	13	1	0.79	RC	Tim's Find	259800	6770981	450	-60	270	42
and	31	35	4	5.44								
including	32	33	1	11.95								
TFRC030	27	33	6	1.44	RC	Tim's Find	259809	6770982	450	-60	270	56
including	27	28	1	4.27								
including	32	33	1	2.53								
and	43	45	2	3.20								
and	50	51	1	1.88								
TFRC031	26	27	1	6.43	RC	Tim's Find	259808	6770961	449	-60	270	54
and	42	46	4	1.44								
TFRC032	no significant intercepts				RC	Tim's Find	259789	6770935	450	-60	270	24
TFRC033	8	25	17	3.63	RC	Tim's Find	259799	6770935	450	-60	270	42
including	13	14	1	4.83								
including	18	25	6	9.15								
TFRC034	25	26	1	0.70	RC	Tim's Find	259808	6770936	450	-60	270	56
and	40	42	2	19.95								
TFRC035	2	3	1	0.62	RC	Tim's Find	259780	6771088	451	-60	270	18
TFRC036	5	9	4	0.80	RC	Tim's Find	259789	6771089	451	-60	270	36
including	8	9	1	1.87								
TFRC037	no significant intercepts				RC	Tim's Find	259798	6771089	451	-60	270	48
TFRC038	9	10	1	2.73	RC	Tim's Find	259786	6771071	451	-60	270	27
TFRC039	no significant intercepts				RC	Tim's Find	259780	6771052	451	-60	270	18
TFRC040	11	15	4	1.12	RC	Tim's Find	259789	6771052	451	-60	270	33
including	14	15	1	3.39								
TFRC041	26	27	1	1.64	RC	Tim's Find	259799	6771052	450	-60	270	48
and	35	36	1	0.64								
TFRC042	17	18	1	1.29	RC	Tim's Find	259857	6770704	453	-60	270	30
and	23	28	5	1.19								
TFRC043	27	28	1	0.60	RC	Tim's Find	259867	6770704	452	-60	270	58
and	32	33	1	0.86								
and	40	45	5	1.27								
including	40	41	1	1.51								
including	43	44	1	3.84								
TFRC044	55	56	1	1.53	RC	Tim's Find	259876	6770704	452	-60	270	90
and	58	59	1	0.94								
TFRC045	26	28	2	4.17	RC	Tim's Find	259987	6770179	451	-60	270	33
TFRC046	39	42	3	2.19	RC	Tim's Find	259998	6770179	451	-60	270	56
TFRC047	8	9	1	1.39	RC	Tim's Find	259977	6770179	451	-60	270	18
TFRC048	no significant intercepts				RC	Tim's Find	259988	6770139	451	-60	270	27
TFRC049	28	29	1	0.61	RC	Tim's Find	259998	6770139	451	-60	270	40
TFRC050	no significant intercepts				RC	Tim's Find	260008	6770139	451	-60	270	54
TFRC051	4	10	6	2.10	RC	Tim's Find	260000	6770019	451	-60	270	24
TFRC052	23	26	3	5.24	RC	Tim's Find	260010	6770019	451	-60	270	36
including	24	25	1	10.85								
TFRC053	37	38	1	3.87	RC	Tim's Find	260020	6770019	451	-60	270	48
TFRC054	0	4	4	1.38	RC	Tim's Find	260000	6769979	451	-60	270	24
TFRC055	17	21	4	9.66	RC	Tim's Find	260010	6769979	451	-60	270	42

and	28	29	1	0.62								
TFRC056	32	36	4	5.98	RC	Tim's Find	260020	6769979	451	-60	270	54
TFRC057	2	3	1	2.66	RC	Tim's Find	259937	6770339	451	-60	270	18
TFRC058	18	22	4	1.98	RC	Tim's Find	259947	6770339	451	-60	270	30
<i>including</i>	18	19	1	4.91								
<i>including</i>	21	22	1	2.23								
TFRC059	35	42	7	1.29	RC	Tim's Find	259957	6770339	451	-60	270	48
<i>including</i>	40	41	1	6.28								
TFRC060	25	27	3	1.15	RC	Tim's Find	259939	6770379	451	-60	270	34
TFRC061	40	41	1	1.46	RC	Tim's Find	259949	6770379	451	-60	270	46
TFRC062	12	13	1	1.17	RC	Tim's Find	259929	6770379	451	-60	270	18
TFRC063	22	33	11	4.86	RC	Tim's Find	259772	6770957	450	-55	45	72
<i>including</i>	28	30	2	24.68								
and	54	55	1	1.59								
TFRC064	46	49	3	1.84	RC	Tim's Find	259769	6770928	440	-55	45	84
and	54	55	1	0.67								
and	74	78	4	13.32								
TFRC065	33	39	6	1.65	RC	Tim's Find	259810	6771001	450	-55	225	69
<i>including</i>	38	39	1	5.76								
and	53	55	2	4.12								
and	61	62	1	6.98								
TFRC066	8	22	14	4.34	RC	Tim's Find	259778	6771270	451	-60	270	30
<i>including</i>	9	10	1	25.90								
<i>including</i>	19	20	1	30.40								
TFRC067	32	38	6	1.10	RC	Tim's Find	259788	6771270	451	-60	270	48
TFRC068	33	34	1	0.72	RC	Tim's Find	259798	6771270	451	-60	270	57
and	40	42	2	2.05								
TFRC069	27	28	1	1.98	RC	Tim's Find	259782	6771210	451	-60	270	48
TFRC070	26	28	2	32.93	RC	Tim's Find	259792	6771210	451	-60	270	60
<i>including</i>	26	27	1	62.90								
and	38	40	2	3.66								
and	46	47	1	0.81								
TFRC071	4	12	8	1.01	RC	Tim's Find	259773	6771190	451	-60	270	18
<i>including</i>	7	8	1	4.43								
<i>including</i>	11	12	1	1.56								
TFRC072	12	14	2	2.43	RC	Tim's Find	259784	6771170	451	-60	270	42
and	24	30	6	1.87								
TFRC073	28.00	31.00	3.00	0.61	RC	Tim's Find	259794	6771170	451	-60	270	60

A

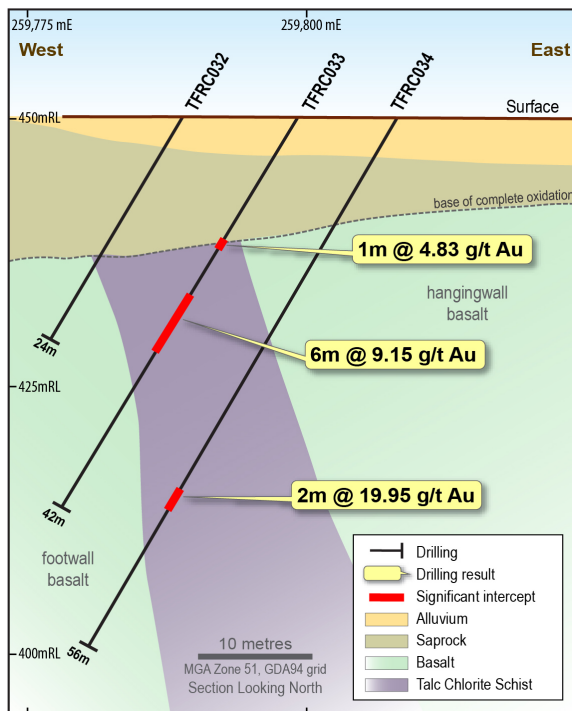


A B

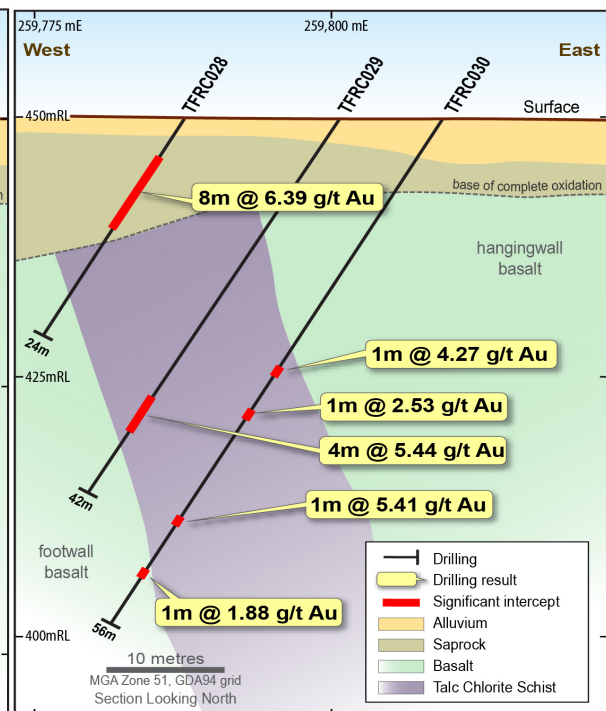


B

C



C D



D

Figures 2 - 5: Sections AA and DD Tim's Find

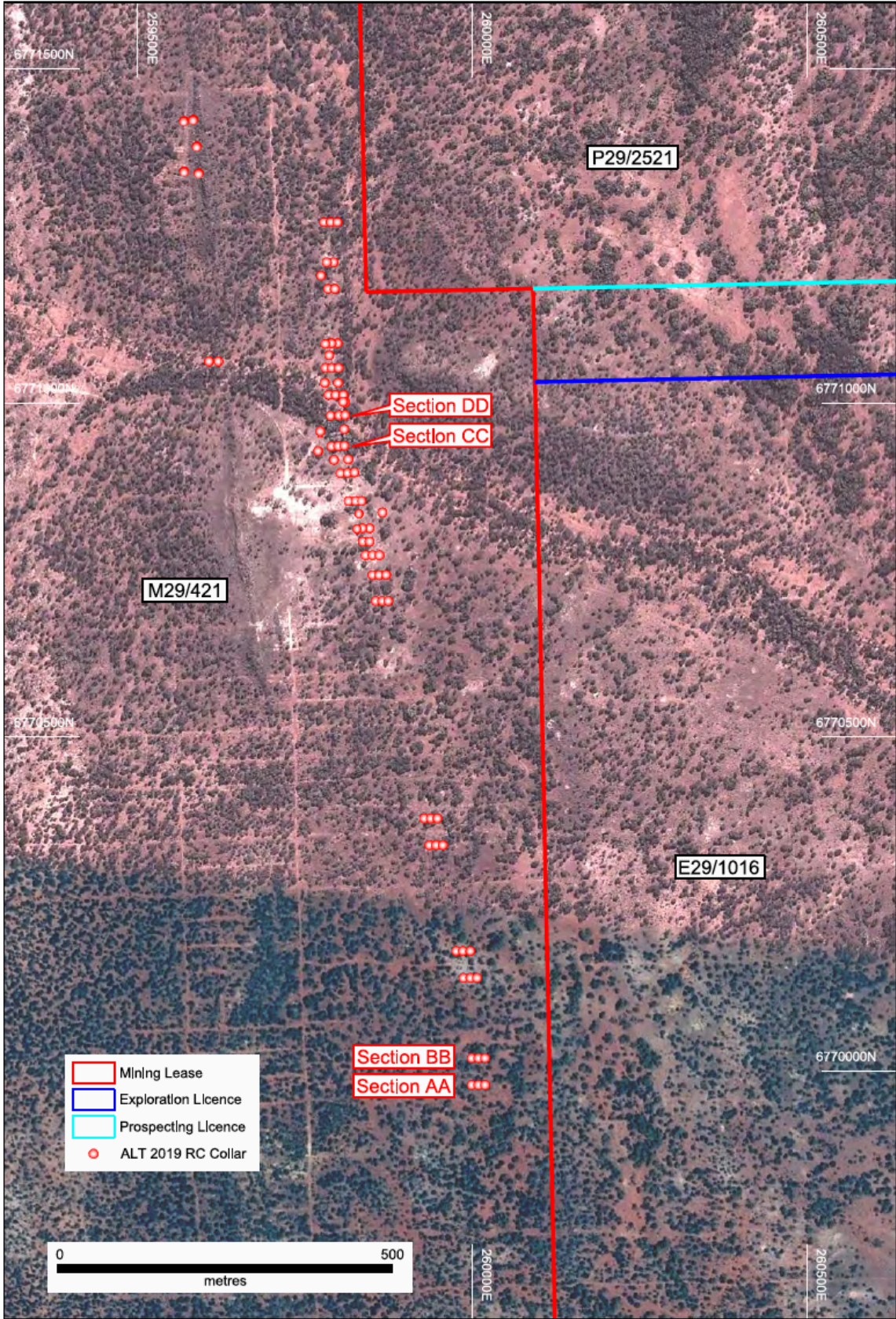


Figure 6: Plan view Tim's Find 2019 RC drillholes with Sections AA-DD

QUINNS FORREST BELLE

The following review and update of the historical Mt Ida Gold Project and specifically the historic Forrest Belle and Boudie Rat open pits being part of the Quinn's project area³.

The Quinn's project area is situated in the northern end of the Mount Ida Greenstone Belt and includes the dormant mining operations at Boudie Rat, Forrest Belle and Quinn Hills. The project is located about 10km northeast of Copperfield, 100km north west of Menzies and 17 kilometres from the Bottle Creek Gold Project (Figure 7).

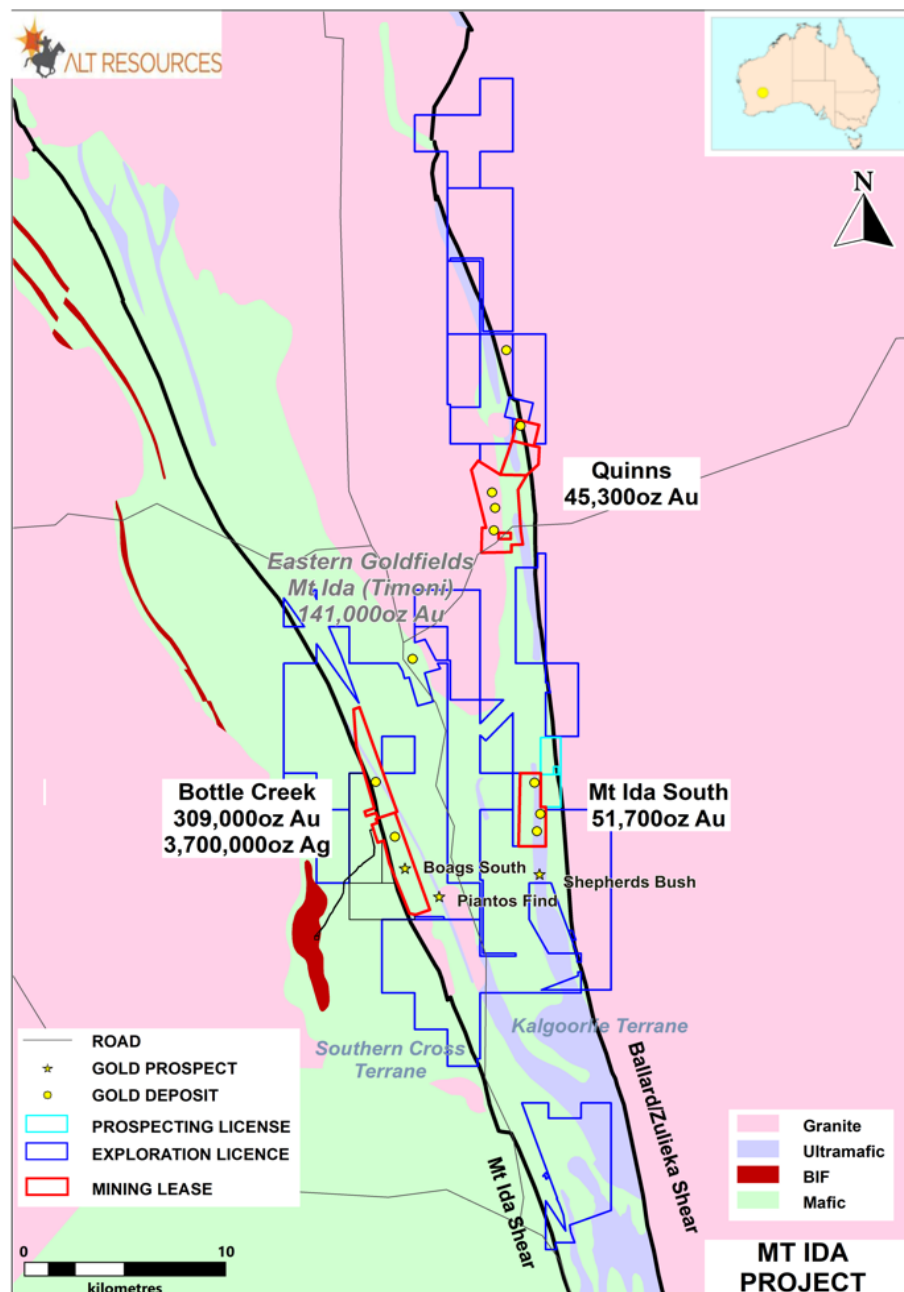


Figure 7: Mt Ida and Bottle Creek project tenements and resource ounces

³ https://www.altresources.com.au/wp-content/uploads/2019/04/20190408_Quinns_Announcement.pdf

As part of the continuing development planning for the Mt Ida and Bottle Creek Gold Projects the Company has recently completed a comprehensive review of the historic Quinn's project area, including historic mines Boudie Rat, Forrest Bell and Quinn's Hills. The Company has spent several months validating and reviewing the historical drillhole data (Figure 8) at the Forrest Belle and Boudie Rat open pits, located on the Quinn's mining lease M26/065. Work was aimed at identifying future drilling targets up and down strike of the two pits.

In addition to data review a detailed **Digital Terrain Modelling (DTM)** over the Boudie Rat and Forrest Belle pits, and the Quinn's Hill mine area, was completed to help assess viability to mine remnant gold resources. The Forrest Belle and Boudie Rat pit DTM's are included in Figure 9 of this report.

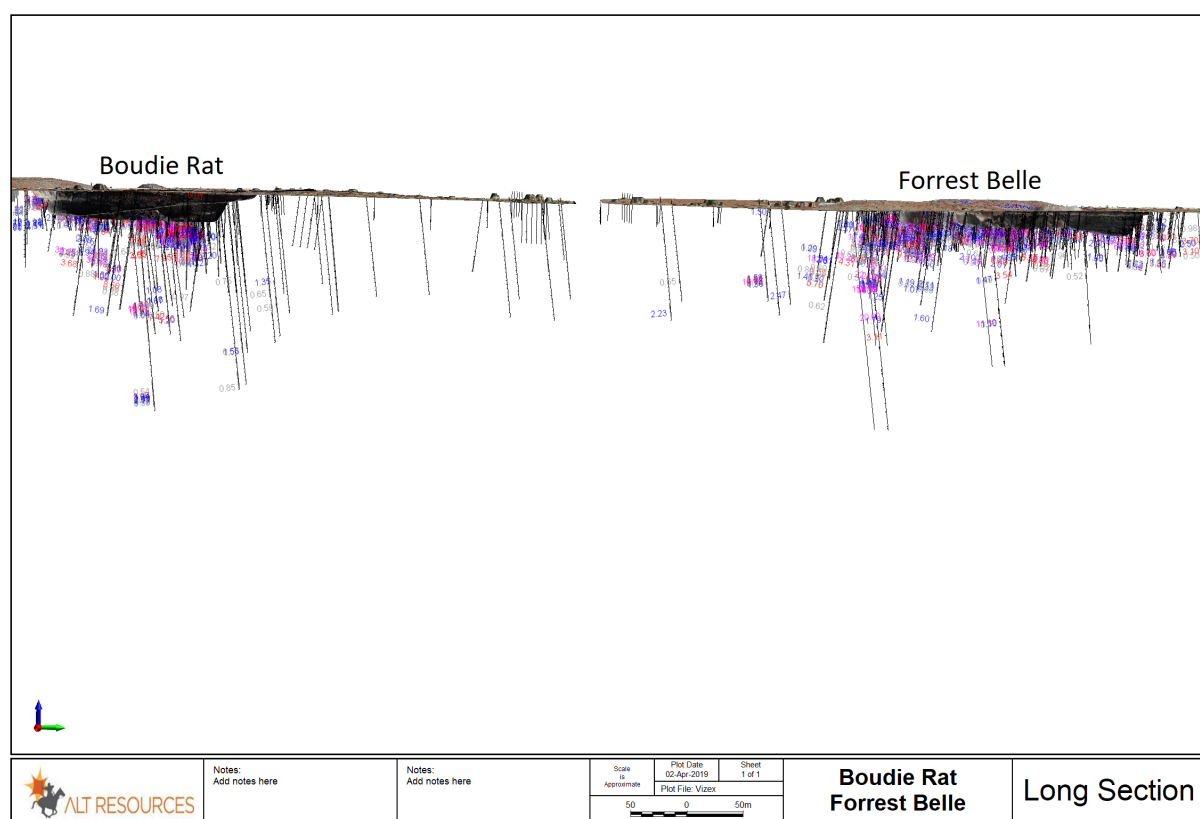


Figure 8: Long section looking west showing historic pits and drilling

Remnant ore zones beneath the current base of both open pits represent an immediate opportunity for a small-scale toll treatment mining operation. The Company as part of planned drilling at Quinn's aims to confirm and extend high-grade mineralisation beneath the pits. Historical drilling by previous explorers has not adequately tested areas to the north of Boudie Rat and both north and south of Forrest Belle pits. The known ore shoots in both pits remain relatively untested with past drilling completed on a grid, rather than targeting, what are interpreted as plunging zones.

The Company completed approximately 14 RC drillholes testing ore shoot extensions on the southern end of the Forrest Belle open pit during the latest RC drill program undertaken during the quarter with results from these drill holes yet to be published to the market.

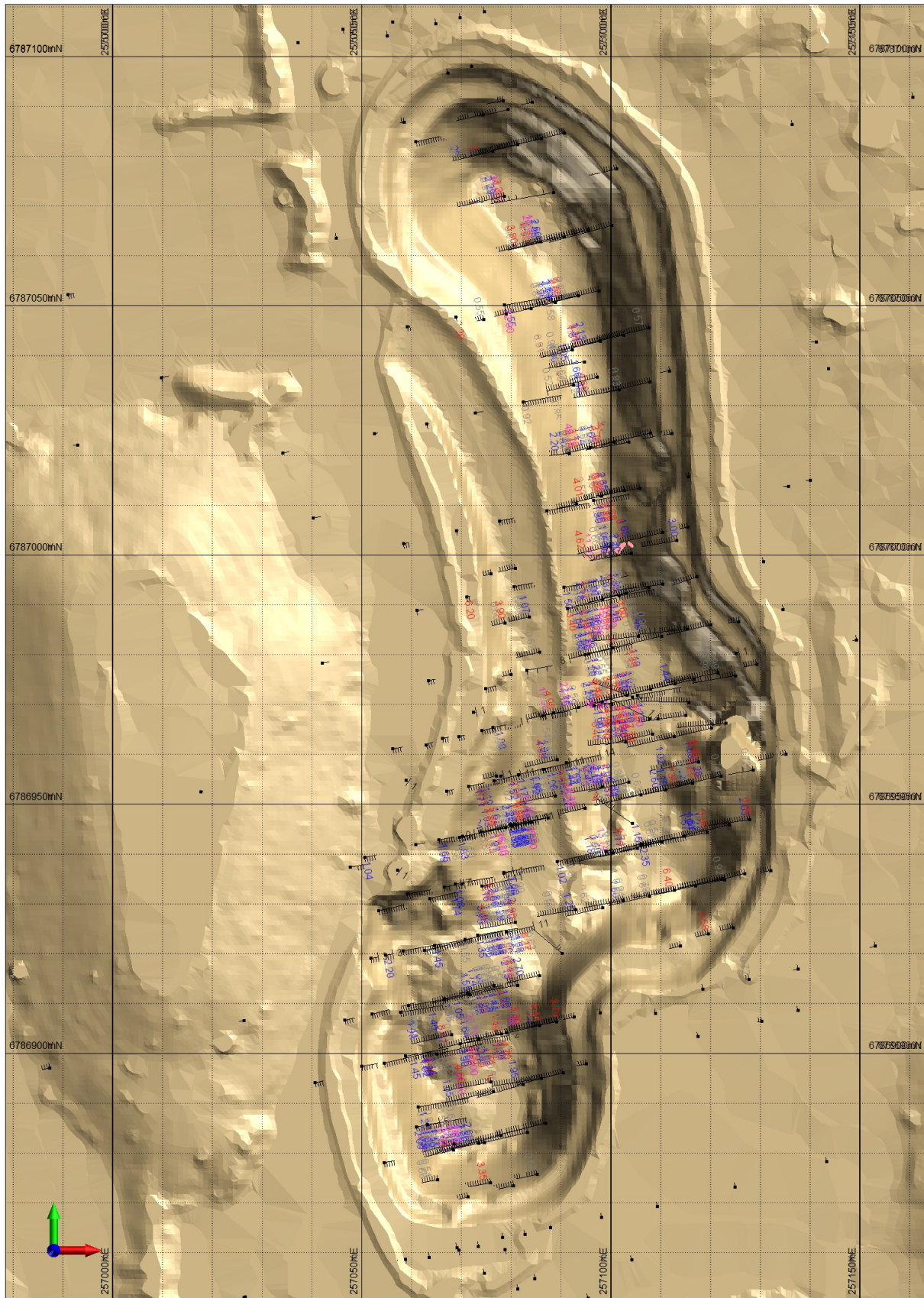


Figure 9: DTM model Forrest Belle open pit at the Quinn's project Mt Ida with historic drill hole locations

BOTTLE CREEK

SOUTH BOAGS ORE SHOOTS

During the quarter the Company spent several weeks reviewing historical drilling data at the Bottle Creek Gold Project. Broad high-grade intercepts at the un-mined southern end of the Bottle Creek Gold Project, south of the Boags pit, indicate continued potential to expand the Bottle Creek gold resource. Grades up to **28.2 g/t Au** are reported from historical drilling, alongside broad, consistently graded intercepts such as **14m @ 2.81 g/t Au** as seen in Sections AA-EE (Figure 11). Reported intercepts are shallow and hosted within an ~80m deep oxide zone similar to that of the Emu and Southwark deposits and consistent with Bottle Creek style of mineralisation⁴.

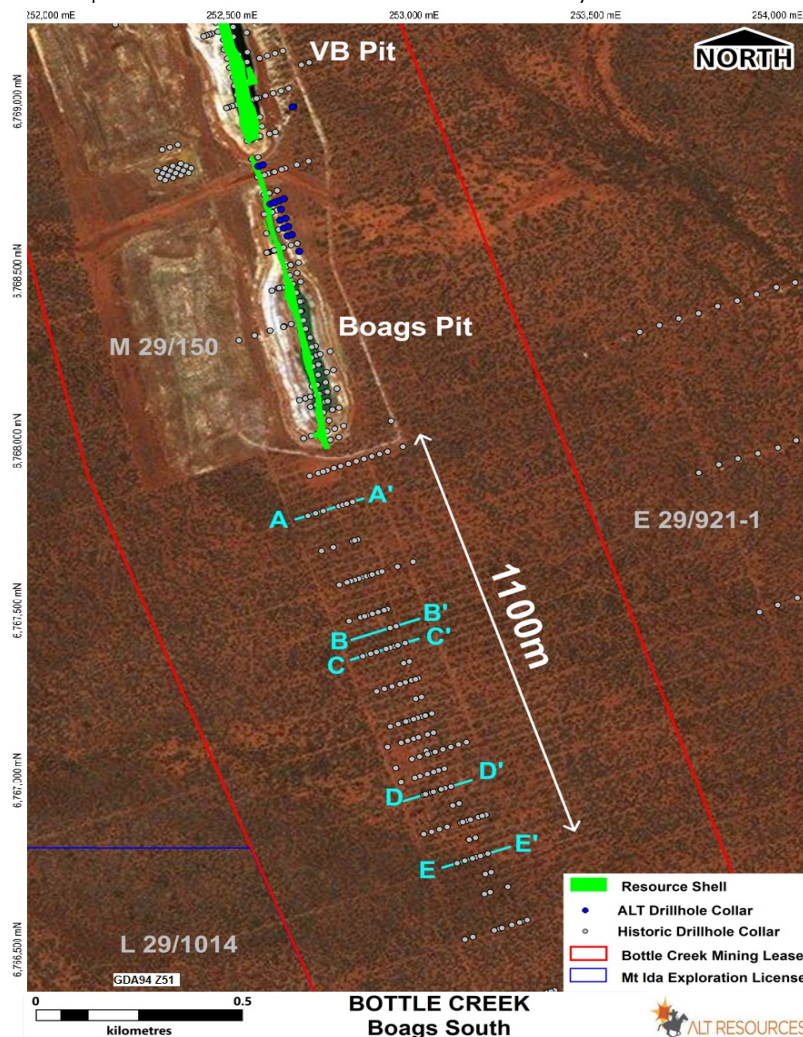


Figure 10: Plan view historical Boags South drillhole showing sections AA-EE

Historical exploration drilling undertaken by EZ and Norgold resulted in the delineation of historical resources at the Emu, VB and Boags deposits with the Company undertaking sporadic step out drilling immediately to the south of the Boags open pit. Drilling was to a nominal depth of around 80m, and targeted oxide mineralisation with drill fences ranging between 100 to 200 metre spacing shown in Figure 10.

⁴ https://www.altresources.com.au/wp-content/uploads/2019/05/20190507_Final_Boags_South-7May19.pdf

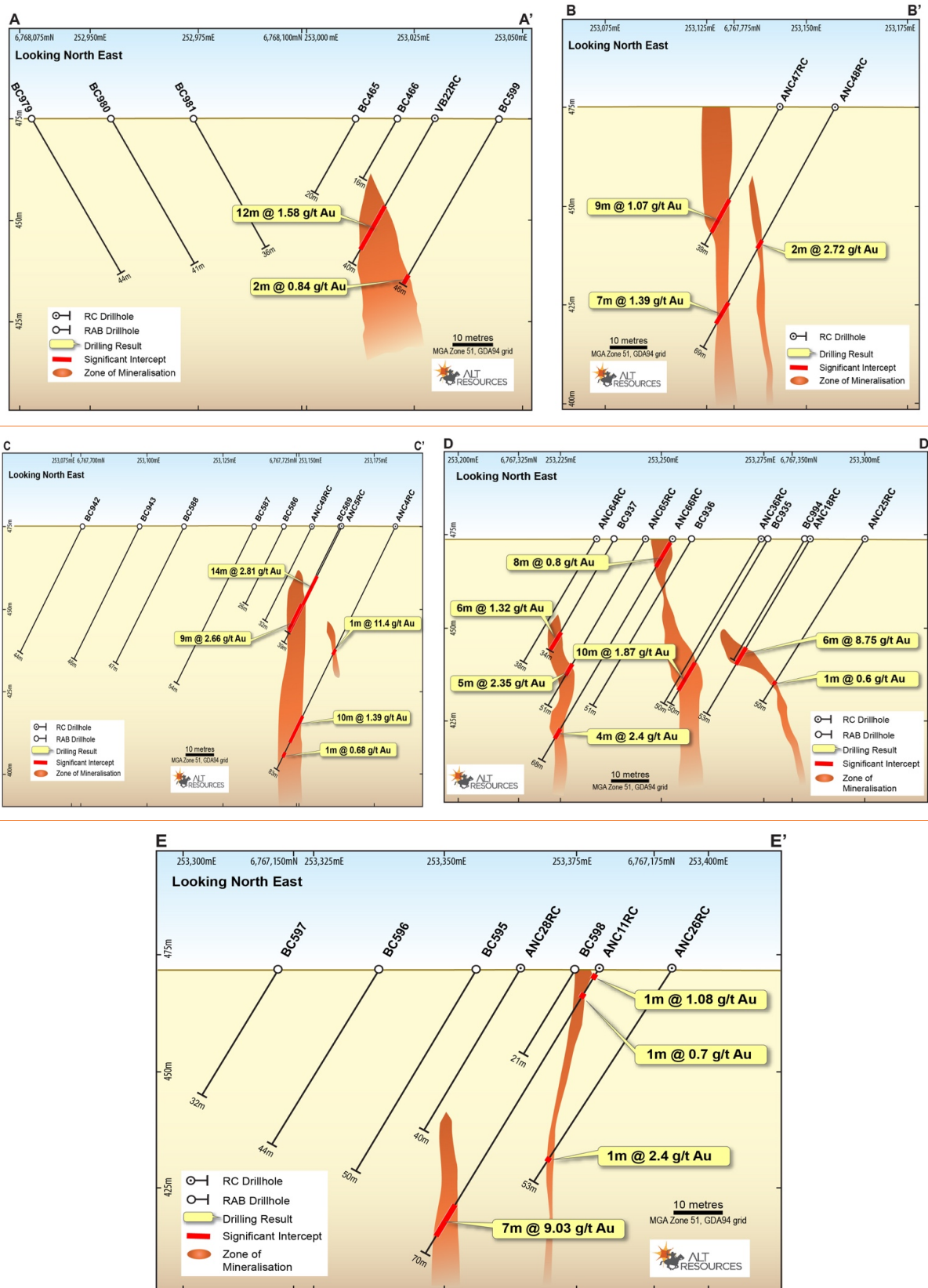


Figure 11. Historical drillhole sections CC-EE at the southern end of the Bottle Creek mining leases, showing drill collars and significant intercepts looking to the north east.

Table 2. Significant intercepts from historical drilling at the southern end of the Bottle Creek Gold Project). Downhole widths are reported. True widths are estimated to be 80% of downhole widths with Easting and Northing grids.

Hole ID	m from	m to	Interval (m)	Au (g/t)	Hole Type	Prospect	Easting*	Northing	RL	Dip	Azimuth	Total Depth
ANC-11-RC	1	2	1	1.08	RC	Boags South	253379	6767171	472	-60	250.00	70
and	6	7	1	0.70		Boags South						
and	58	65	7	9.03		Boags South						
including	58	60	2	28.20		Boags South						
ANC-18-RC	32	38	6	8.75		Boags South	253286	6767350	473	-60	249.00	53
ANC-25-RC	44	45	1	0.60		Boags South	253300	6767354	473	-60	250.00	50
ANC-26-RC	47	48	1	2.40		Boags South	253393	6767176	472	-60	249.00	53
ANC-3-RC	25	34	9	2.66		Boags South	253163	6767731	474	-60	250.00	39
ANC-47-RC	26	35	9	1.07		Boags South	253143	6767777	474	-60	249.00	39
ANC-48-RC	38	40	2	2.72		Boags South	253157	6767782	474	-60	249.00	69
and	57	64	7	1.39		Boags South						
ANC-4-RC	41	42	1	11.40		Boags South	253181	6767738	474	-60	247.00	83
and	64	74	10	1.39		Boags South						
and	77	78	1	0.68		Boags South						
ANC-65-RC	38	43	5	2.35		Boags South	253246	6767335	473	-60	249.00	51
ANC-66-RC	0	8	8	0.80		Boags South	253253	6767338	473	-60	249.00	68
and	58	62	4	2.40		Boags South						
BC-589	20	34	14	2.81		Boags South	253163	6767731	474	-60	249.00	34
BC-599	44	46	2	0.84		Boags South	253045	6768114	474	-60	249.00	46
BC-935	36	46	10	1.87		Boags South	253276	6767346	473	-60	249.00	50
BC-937	28	34	6	1.32		Boags South	253239	6767333	473	-60	249.00	34
VB-22-RC	24	36	12	1.58		Boags South	253031	6768108	474	-60	249.00	40

Co-ordinates in projection GDA94 – zone 51

RC drilling is planned to commence at Boags south as part of the next RC drilling program due to commence in September 2019 designed to add resource ounces.

MT IDA AND BOTTLE CREEK

MINERAL RESOURCE SUMMARY

Alt's combined mineral resource Inventory now stands at **6.8 Mt @ 1.85 g/t for 406,000 oz Au and 3.78 Moz Ag** consisting of the Bottle Creek Project combined with the resources on the Mt Ida Project, which includes Quinn's and Mt Ida South Project areas. The Company's full and combined Mineral Resource Estimate for the Bottle Creek and the Mt Ida Gold Projects are as follows:⁵

Table 2: Mt Ida and Bottle Creek Resource Inventory

Deposit	Category	Tonnes	Grade g/t	Ounce Au	Tonnes	Grade g/t	Ounce Ag
Bottle Creek Project							
Emu and Southwark	Measured	602,000	2.3	44,264	602,000	9.5	187,000
	Indicated	1,939,000	1.81	112,917	1,939,000	13.1	815,000
	Inferred	516,000	1.3	21,653	516,000	15.2	251,700
VB and Boags	Indicated	1,827,000	1.67	98,291	1,827,000	28.9	1,697,400
	Inferred	692,000	1.43	31,553	692,000	37.3	829,340
Mt Ida Project							
Boudie Rat & Forrest Belle	Measured	130,000	2.5	10,450			
	Indicated	130,000	3	12,540			
	Inferred	30,000	3.6	3,473			
Boudie West & Belvidere	Indicated	30,000	3.8	3,666			
	Inferred	100,000	2.1	6,752			
Quinns Hills	Indicated	20,000	5.7	3,666			
Matisse	Inferred	110,000	1.7	6,013			
Tims Find	Indicated	360,000	2.6	30,096			
Spotted Dog North & South	Inferred	320,000	2	20,579			
Total		6,800,000	1.86	406,000	5,570,000	21.1	3,780,000

⁵

https://www.altresources.com.au/wpcontent/uploads/2019/05/20190507_ARS_Clarifying_Statement_Resource.pdf

TOWARDS FEASIBILITY

Alt Resources is committed to advancing the Bottle Creek Gold Project towards gold production. Consistent with the Corporate Strategy to develop the Bottle Creek Project, Alt has progressed various technical studies including pit optimisation study for the pre-stripped Emu deposit and the Southwark deposit, treatment plant preliminary plant design and costing parameters, tailings storage facility and environmental assessment studies. The various components will go into the preparation of a feasibility study.

Alt has focused on realising the Company's vision of expanding existing Mt Ida JORC Resources and making new discoveries in the Mt Ida Gold Belt. We are moving towards our goal of establishing a central gold production hub at the Bottle Creek mine site.

CORPORATE

During the quarter, the Company undertook a placement to raise \$1,351,400 at \$0.02 per Share, raising capital to fast track exploration at Mt Ida. DJ Carmichael Pty Limited was the sole Lead Manager for the placement, to be completed over two tranches. The first tranche, raising \$1,100,250, was completed during the quarter, with the second subject to shareholder approval being sort at the General Meeting held 26 July 2019. The placement was made to investors qualifying under Section 708 of the *Corporations Act 2001 (Cth)*.

The Company also undertook a Share Purchase Plan (**SPP**) during the quarter, allowing eligible Shareholders to purchase up to \$15,000 worth of Shares at a discount to the market without incurring any brokerage or other costs and at the same price of the placement. The SPP raised \$207,000 via the issue of 10,350,000 fully paid ordinary shares at \$0.02 per Share.

Funds raised from the placement and SPP are being used for resource and exploration drilling including drilling at Sherpherds Bush, Forrest Belle and Boudie Rat, pit optimisation, development of a maiden ore reserve statement, vendor payment(s) and for general working capital.

On 29 April 2019, the Company entered into a Convertible Note Deed with Patina Resources Pty Ltd with a face value of \$500,000. \$100,000 was drawn down during the quarter with funds used for additional working capital and exploration drilling at the Company's Bottle Creek and Mt Ida Projects. The term of the Note is 12 months with interest of 10% per annum, \$10,000 of which was pre-paid via the issue of shares at \$0.025. Conversion of the Note is subject and conditional upon Shareholder approval.

For Further information please contact:

James Anderson

Chief Executive Officer

James.anderson@altresources.com.au

Peter Nesveda

Investor Relations

M: +61 (0) 412 357 375

peter@intuitiveaustralia.com.au

Appendix 1. Alt Resources tenements

Project (Location)	Tenement Number	Tenement Area (km ²)	Title Holder	% Ownership
Paupong - NSW				
	EL7825	87.77	Alt Resources & GFM Exploration	Alt holds 70%
	EL8645	52.35	Alt Resources & GFM Exploration	Alt holds 70%
Myalla - NSW				
	EL8416	57.99	Alt Resources & GFM Exploration	Alt holds 70%
Mount Roberts - WA				
	M36/279	1.21	Alt Resources & Mount Roberts Mining	Alt holds 51%
	M36/341	1.21	Alt Resources & Mount Roberts Mining	Alt holds 51%
	E36/888*	42.00	Alt Resources	Alt will hold 100%
Bottle Creek - WA				
	M29/150	5.71	R.S Lehmann	Alt acquiring 100%
	M29/151	4.57	R.S Lehmann	Alt acquiring 100%
Mount Ida - WA				
	E29/1007	8.40	MGK Resources [†]	MGK holds 100%
	E29/1008	2.80	MGK Resources	MGK holds 100%
	E29/1014	5.60	MGK Resources & Maincoast	MGK holds 80%
	E29/1016	78.40	MGK Resources	MGK holds 100%
	E29/790	11.20	MGK Resources	MGK holds 100%
	E29/901	11.20	MGK Resources & Maincoast	MGK holds 80%
	E29/921	78.40	MGK Resources & Maincoast	MGK holds 80%
	E29/969	30.80	MGK Resources & Gazard Investments	MGK holds 80%
	E29/970	5.60	MGK Resources & Gazard Investments	MGK holds 80%
	E29/971	2.80	MGK Resources & Gazard Investments	MGK holds 80%
	E29/973	8.40	MGK Resources & Gazard Investments	MGK holds 80%
	E29/993	2.80	MGK Resources & Maincoast	MGK holds 80%
	M29/421	4.39	MGK Resources	MGK holds 100%
	E29/649	16.80	MGK Resources	MGK holds 100%
	E29/748	2.80	MGK Resources	MGK holds 100%
	E29/930	8.40	MGK Resources	MGK holds 100%
	E29/943	14.00	MGK Resources	MGK holds 100%
	E29/997	16.80	MGK Resources	MGK holds 100%
	E29/998	5.60	MGK Resources	MGK holds 100%
	M29/36	1.21	MGK Resources	MGK holds 100%
	M29/37	2.42	MGK Resources	MGK holds 100%
	M29/65	8.04	MGK Resources	MGK holds 100%

* tenement pending

[†] MGK Resources is a wholly owned subsidiary of Alt Resources