



ARDIDEN

2 August 2017

ARDIDEN EXPANDS PROJECT PORTFOLIO WITH OPTION OVER HIGHLY PROSPECTIVE GOLD PROJECT

Proposed acquisition of advanced Pickle Lake Gold Properties significantly strengthens Ardiden's exploration and development pipeline, with historical (non-JORC compliant) estimate of 500,000oz of gold

HIGHLIGHTS:

- Option Agreement signed with White Metal Resources Corporation (TSX-V: WHM) to acquire 100% of the Pickle Lake Gold Properties in Ontario, Canada.
- Proposed acquisition includes four separate gold properties offering both advanced development opportunities and early stage exploration:
 - Dorothy-Dobie Lake Property
 - Kasagiminnis Lake Property
 - South Limb Property
 - Pickle Lake West Property
- Over 25,000m of historical diamond drilling completed across the Pickle Lake Gold Properties, confirming the potential for multiple extensive gold mineralised zones at both Dorothy-Dobie Lake and Kasagiminnis Lake, with gold mineralisation remaining open along strike and at depth.
- Impressive historical grades up 472.8 g/t Au over 0.5m reported from the Dorothy Main Gold Zone by Major General Resources Ltd in 1988 (DDH DOR-90-43) and 153.5 g/t Au over 0.44 metres reported by Trillium North Minerals Ltd in 2007 (DDH 07-DOR-005).
- Dorothy-Dobie Lake Property has several gold mineralised zones traced over a strike length of 10km, along strike from the historical Golden Patricia Mine (operated by Barrick Gold from 1988 to 1997, with production of 619,796oz at a head grade of 15.21 g/t Au).
- Ardiden can acquire a conditional 100% interest in the Project for staged payments of CAD\$140,000 and the issue of 5.6M shares to White Metal Resources Corporation, with a 12-month exclusive period to conduct due diligence exploration activities.
- Historical data review, field mapping and exploration program is now underway, with drilling to follow if warranted.

Diversified minerals explorer and developer Ardiden Limited (ASX: ADV) is pleased to advise that it has secured an Option Agreement over the advanced **Pickle Lake Gold Properties**, adding an exciting new gold exploration opportunity to the Company's diverse project portfolio in the established mining jurisdiction of Ontario, Canada.

The Option Agreement was signed with TSX-listed White Metal Resources Corporation (TSX-V:WHM – "White Metal Resources"), and provides Ardiden with a low-cost, low risk opportunity to assess a highly prospective project that offers advanced development targets, as well as early-stage exploration opportunities.

Ardiden Limited

Suite 6, 295 Rokeby Road
Subiaco WA 6008

Tel: +61 (0) 8 6555 2950
Fax: +61 (0) 8 9382 1222
www.ardiden.com.au

ASX Code: ADV
Shares on Issue: 959M

The project has numerous substantial gold mineralised zones already identified across multiple locations, with over 25,000m of historical diamond drilling completed and three known gold deposits identified with a combined **500,000 ounces** *(historical only, not to be relied upon and not reported in accordance with historical or current JORC or CIM 43-101 guidelines, Refer to Table 1).*

The three gold deposits comprise:

- Dorothy Main Deposit: **46,600** ounces of gold @ **6.17** g/t Au
(MNDM Mineral Deposit Inventory Number: MDI52O06NW00003, deposit located at 617883E and 5698053N)
- Dobie Lake Deposit: **53,000** ounces of gold @ **5.5** g/t Au
(MNDM Mineral Deposit Inventory Number: MDI52O06NE00004, deposit located at 623400E and 5692095N); and
- Kasagiminnis Lake Deposit: **400,000** ounces of gold @ **4.79** g/t Au
(MNDM Mineral Deposit Inventory Number: MDI52O08SW00007, deposit located at 682186E and 5683313N).

Resource information extracted from the Technical Report on Three Gold Exploration Properties Pickle Lake Area, Ontario, Canada, for Manicouagan Minerals Inc, G.A. Harron, P.Eng., G.A. Harron & Associates Inc, October 13, 2009, page 4.

It should be noted that the historical resource estimates for the Dorothy Main, Dobie Lake and Kasagiminnis Lake gold deposits were calculated prior to CIM National Instrument 43-101 or JORC (2012) guidelines and, as such, should only be considered from a historical point of view and not relied upon. Ardiden cautions that a Competent Person has not done sufficient work to classify this historical estimate as a Mineral Resource in accordance with the JORC Code 2012 Edition. It is uncertain that, following evaluation, it will be possible to report a Mineral Resource in accordance with the JORC Code 2012 Edition

Further, the reader is cautioned that Ardiden has not undertaken any independent investigation of the dimensions, quantity or grade of the gold mineralization referred to above, therefore the historical data should not be relied upon. At best, Ardiden views this historical data as a conceptual indication of the potential size and grade of the gold deposits in the area, and this data is relevant to ongoing exploration efforts. The reader is further cautioned that the information in this section is not necessarily indicative of the mineralization on the property that is the subject of this report.

Table 1. Table of Historical Gold Desposits at the Dorothy-Dobie Lake and Kasagiminnis Lake Properties.

Deposit / Zone	Tonnes	Grade Au (g/t)	Year	Reference
Dorothy Main	236,000	6.17	1990	Seim, 1993
Dobie Lake	301,000	5.50	1987	Seim, 1993
Kasagiminnis Lake	2,600,000	4.79	1988	Blackburn et. al. 1989

Resource information extracted from the Technical Report on Three Gold Exploration Properties Pickle Lake Area, Ontario, Canada, for Manicouagan Minerals Inc, G.A. Harron, P.Eng., G.A. Harron & Associates Inc, October 13, 2009, page 4.

Harron Report relies upon the following references for the above estimates:

- Blackburn, C.E., Hailstone, M.R., Parker, J. and Story, C.C., 1989, Kenora Resident Geologist's Report – 1988; p. 3-46 in Report of Activities 1988, Resident Geologists edited by K.G. Fenwick, P.E. Giblin and A.E. Pitts, Ont. Geol. Surv., MP 142, 391 p; and
- Seim, G.W., 1993, Mineral Deposits of the Central Portion of the Uchi Subprovince, Vol. 1, Meen Lake to Kasagiminnis Lake Portion, Ont. Geol. Surv. OFR 5869, 390 p.



Figure 1. Location of the Pickle Lake Gold Properties in Ontario, Canada.

The Pickle Lake Gold Properties are located within the prolific gold-producing Meen-Dempster Greenstone Belt of the Uchi Geological Sub-province of the Canadian Shield, in close proximity to several of the Company's existing projects and to the regional mining centre of Thunder Bay.

Ardiden believes there is significant potential to expand the existing gold mineralised zones within the Pickle Lake Gold Properties, with many areas remaining underexplored and the properties located along strike from substantial historical gold mining operations, including:

- Central Patricia Mine (1935-1951) produced **608,650** ounces of gold @ **12 g/t Au**.
- Central Patricia #2 Mine (1938-1940) produced **13,158** ounces of gold @ **23.86 g/t Au**.
- Pickle Crow Mine (1935-1966) produced **1,446,214** ounces of gold @ **17.82 g/t Au**.
- Dona Lake Mine (1987-1993) produced **218,868** ounces of gold @ **6.62 g/t Au**.
- Golden Patricia Mine (1988-1997) produced **619,796** ounces of gold @ **15.21 g/t Au**.

(Information about gold production sourced from White Metal Resources Corp., Corporate Presentation, January 2017.)

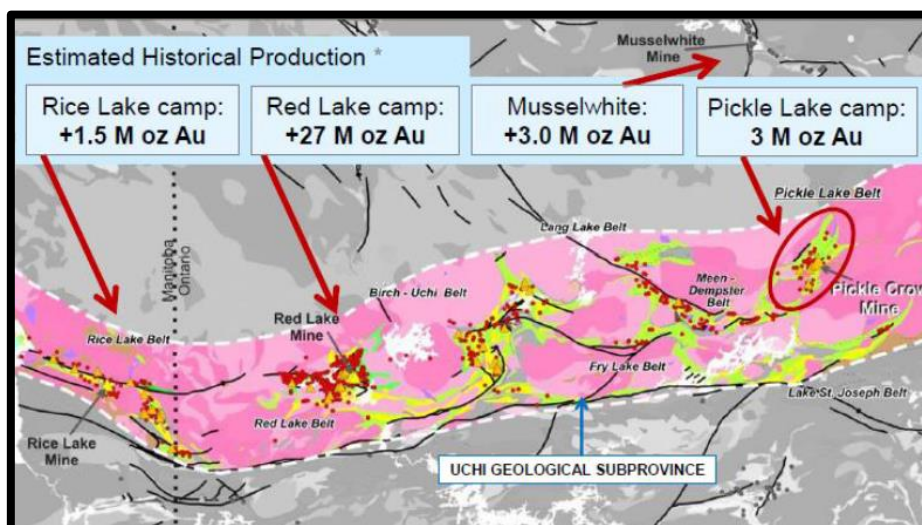


Figure 2. Overview map showing the Canadian Greenstone Belt and substantial gold mineralisation (Image sourced from White Metal Resources Corporate Presentation, January 2017)

Under the terms of the Option Agreement, Ardiden has 12 months to complete a due diligence review of the Pickle Lake Gold Properties. The Company can acquire a 100% interest in the Project claims for total payments of CAD\$140,000 and the issue of 5,592,949 ordinary Ardiden shares, payable in staged payments over the 12-month due diligence period to White Metal Resources Corp. ("White Metal Resources") and meeting the ongoing obligations of the underlying Option Agreements with Murchison Minerals Ltd. ("Murchison Minerals" - formerly Manicouagan Minerals Inc.) and Ken Kukkee.

The due diligence program will be designed to verify the historical and current drilling and sample results, and obtain a better understanding of the various known gold mineralisation zones and the influence of the surrounding structures at the Pickle Lake Gold Properties.

PICKLE LAKE GOLD PROPERTIES - OVERVIEW

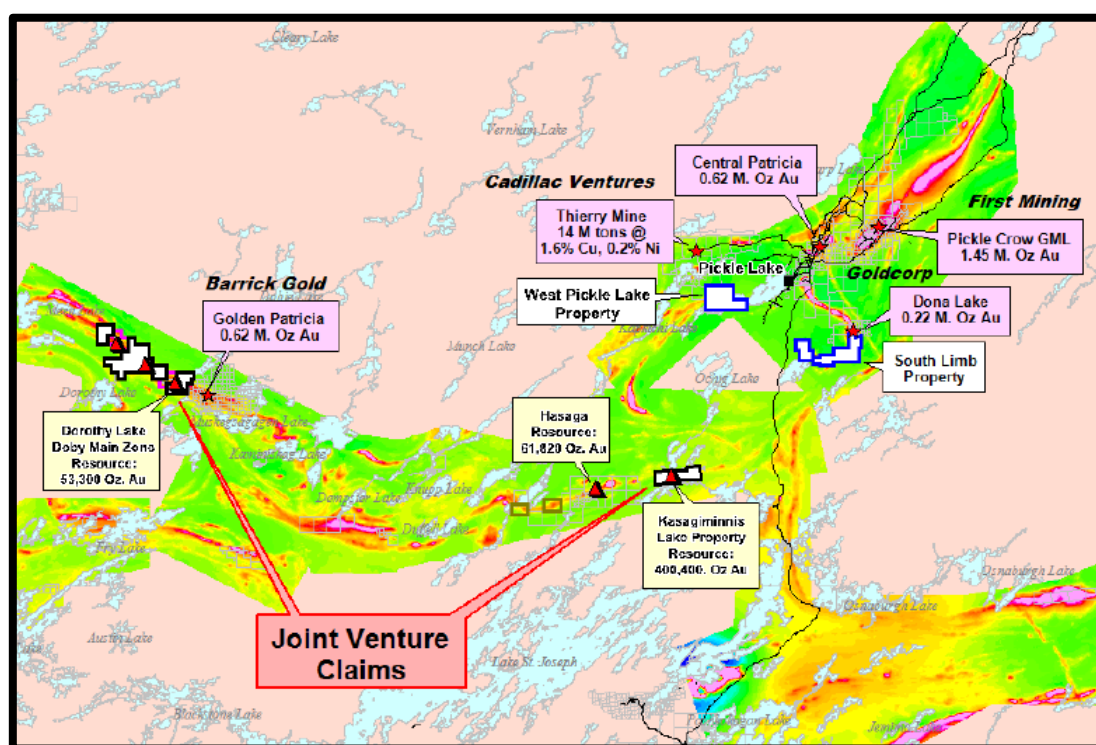


Figure 3. Overview map showing the location of the Pickle Lake Gold Properties and the surrounding along strike historical gold production (Image sourced from White Metal Resources Corporate Presentation, January 2017)

The four Pickle Lake Gold Properties comprise 6,560 Ha of mining claims, with over 25,000 metres of historical diamond drilling completed across the Dorothy-Dobie Lake, Kasagiminnis Lake and South Limb property claims. The Pickle Lake West Property has yet to be drill tested.

The Pickle Lake Gold Properties are jointly held between White Metal Resources, Murchison Minerals and Ken Kukkee. White Metal Resources holds Option Agreements with the other two parties to acquire any remaining interest in the various properties that it does not already own.

In April 2016, White Metal Resources Corp. entered into an Option Agreement to acquire 100% of the project claims currently held by Ken Kukkee, including the area of the historical non-JORC compliant Dobie Lake Deposit of 53,000 ounces gold at 5.5 g/t.

In June 2016, White Metal Resources Corp. entered into a further Option Agreement to acquire 100% of the project claims currently held by Murchison Minerals Ltd, including the area of the historical non-JORC compliant Kasagiminnis Lake Deposit of 400,000 ounces gold at 4.79 g/t.

The two options executed by White Metal Resources Corp. with Ken Kukkee and Murchison Minerals Ltd, now means Ardiden has full access to the numerous gold mineralisation zones at the Dorothy-Dobie Lake project which have been traced for a strike length 10kms along the Golden Patricia trend and is along strike from the historical Golden Patricia mine.

Ardiden confirms the South Limb and Pickle Lake West Properties are 100% owned by White Metal Resources.

KASAGIMINNIS LAKE PROPERTY

The Kasagiminnis Lake Property consists of three contiguous staked mining claims covering 752ha in the Little Ochig Lake area. The project is located in north-western Ontario, approximately 25km south-west of the town of Pickle Lake, and approximately 15km west of the Mishkeegogamang First Nation Community of New Osnaburgh. The Provincial Highway 599 is located approximately 9km east of the Kasagiminnis Lake Property.

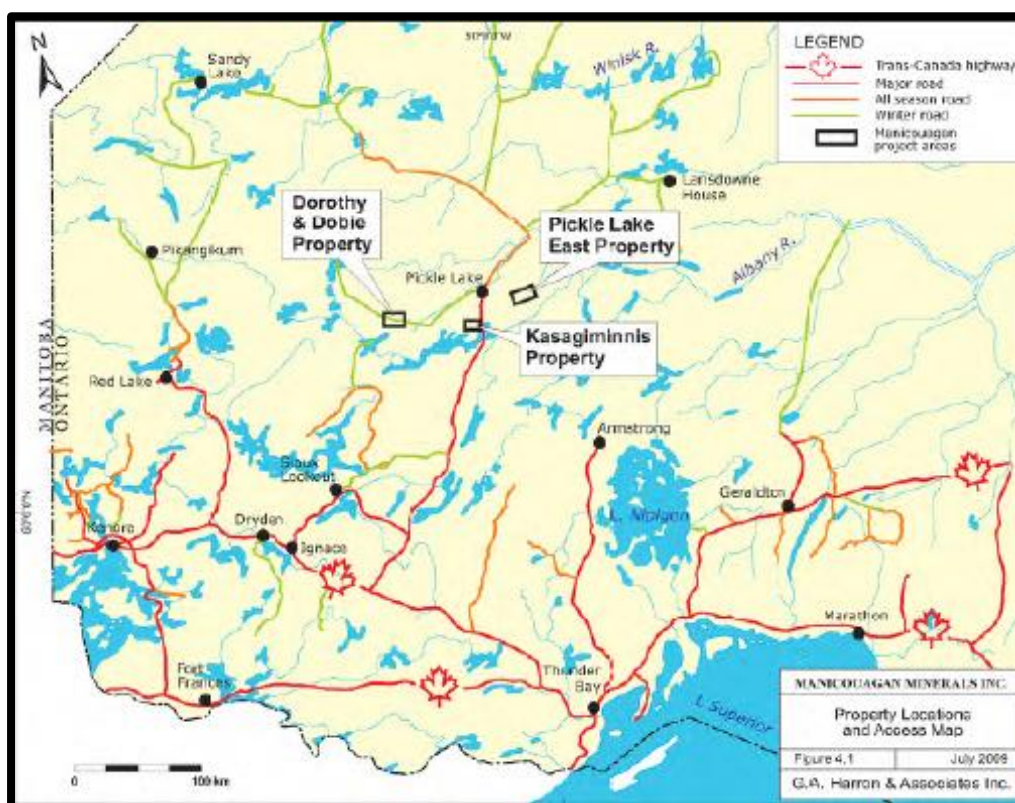


Figure 4. Overview location map of the Kasagiminnis Lake Property. (Image extracted from the Technical Report on Three Gold Exploration Properties Pickle Lake Area, Ontario, Canada, for Manicouagan Minerals Inc, G.A. Harron, P.Eng., G.A. Harron & Associates Inc, October 13, 2009, page 11)

Murchison Minerals completed two diamond drilling programs on the Kasagiminnis Lake Property between April and July 2011. A total of fourteen (14) drill holes (KAS-11-01 to KAS-11-14) totalling 2,059 metres were drilled, to test a 250-metre interval along the **1,300-metre** long gold bearing zone (the Kasagiminnis Gold Zone). The gold mineralisation on the project remains open along strike and at depth.

The Gold Zone had previously been identified by Moss Resources and Power Exploration Inc. in the mid to late 1980's, and Murchison Minerals' drilling program was designed to test the down dip extension of the gold mineralization. Each of the drill holes that reached its targeted depth successfully encountered the Kasagiminnis Gold Zone.

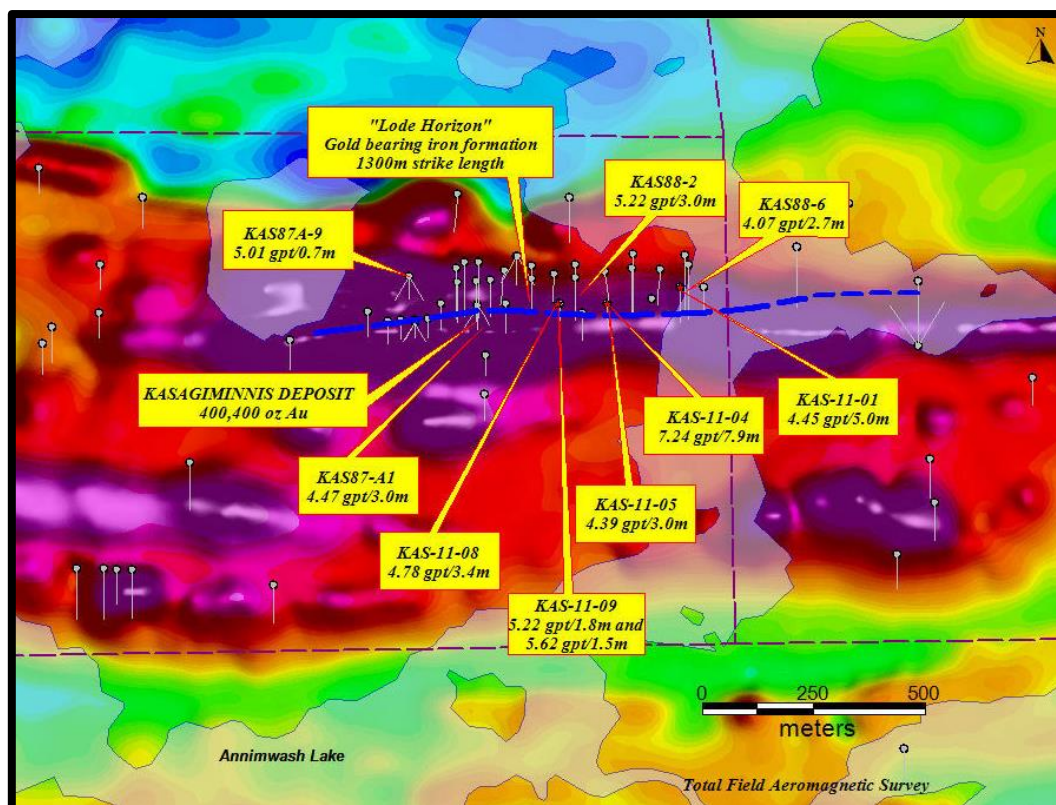


Figure 5. Overview map of the 1,300m long Kasagiminnis main gold zone. (Image sourced from White Metal Resources Corporate Presentation, January 2017)

Gold mineralization in the Kasagiminnis Gold Zone occurs within a silicified zone containing disseminated sulphides (pyrite, pyrrhotite) along magnetite which was historically called “iron formation”. Significant assay results returned from this program included **7.24 g/t** gold over **6.60** metres (including **12.70 g/t** over **1.9** metres) in hole KAS-11-04 (refer to Tables 2 and 6). (Drilling information extracted from the Manicouagan Minerals Inc. *Work Report of 2011 Phase One and Two Diamond Drilling Programs Kasagiminnis Lake Project Pickle Lake Area, Ontario*, Bruce W. Mackie P.Geo., Bruce Mackie Geological Consulting Services, October 2011, page 1.)

The 2011 drilling confirmed the near-surface gold zone ranges from 3m to 15m true width and is typically characterized by silicification, sulphide (pyrite +/- pyrrhotite) mineralization often accompanied by the development of garnet, diopside and grunerite alteration.

The 2011 drill program was successful in confirming the continuity of this portion of the Kasagiminnis Main gold zone, which is virtually untested and remains open below 225 metres depth and along strike. The Pickle Lake Greenstone Belt is part of the prolific Uchi Geological Sub-province, which hosts the Pickle Lake, Red Lake and Rice Lake gold camps.

The Bruce Mackie 2011 report states that the gold bearing target horizon is described in the past as an iron formation. Magnetite is also commonly present, usually as fine disseminations but rarely exceeding 5%. The unit appears highly altered, no original metamorphic textures can be observed. Common altered minerals besides garnet include diopside and grunerite. The unit is invariably silicified and occasional quartz “veins”, while not common, can be observed.

Typically, it contains 1-2% pyrrhotite/pyrite, but locally up to 10%. It varies from 2 to >20 metres in true width and is in general anomalous (>100ppb) in gold. In general, the better gold mineralization encountered was associated with the more strongly silicified and sulphide bearing portions of the target horizon.

The 2011 diamond drilling program undertaken by Murchison Minerals continued to demonstrate extensions to the known gold mineralisation zones (Refer to Figures 5-7 and Table 2 below).

Table 2. Table of Significant Assay Results from 2011 Drill Program at Kasagiminnis Lake Project

Kasagiminnis Lake Assay Results from May 2011 Diamond Drilling					
Hole	From (m)	To (m)	Length (m)	Au gpt AA	Au gpt Grav.
KAS-11-01	116.7	127.8	11.1	2.82	2.76
incl.	120.7	125.7	5.0	4.55	4.45
KAS-11-02	hole abandoned				
KAS-11-03	hole abandoned				
KAS-11-04	126.1	134.0	7.9	6.60	7.24
incl.	126.1	128.0	1.9	12.86	12.70
KAS-11-05	67.5	70.5	3.0	2.52	2.21
and	75.5	77.5	2.0	5.20	6.02
KAS-11-06	63.5	64.5	1.0	4.21	3.79
and	98.3	99.7	1.4	6.24	7.05
KAS-11-07	27.7	51.7	24.0	0.69	0.83
incl.	27.7	28.5	0.8	6.95	8.94
KAS-11-08	71.3	93.0	21.7	1.85	1.91
incl.	72.3	74.8	2.5	4.60	5.70
and	83.6	87.0	3.4	4.49	4.78
KAS-11-09	49.5	57.5	8.0	2.91	2.79
incl.	49.5	51.3	1.8	4.73	5.22
and	54.2	55.7	1.5	5.80	5.62

note: true widths are currently estimated at 50-80% of drilled widths

Kasagiminnis Lake Assay Results from July 2011 Diamond Drilling					
Hole	From (m)	To (m)	Length (m)	Au gpt AA	Au gpt Grav.
KAS-11-10	hole abandoned				
KAS-11-11	229.7	230.7	1.0	5.64	4.88
KAS-11-12	231.0	232.0	1.0	2.64	2.12
KAS-11-13	204.3	205.3	1.0	2.07	NA
KAS-11-14	233.8	234.8	1.0	5.85	3.62
and	240.0	241.0	1.0	6.21	6.80

note: true widths are currently estimated at 50-65% of drilled widths

Extracted from the Manicouagan Minerals Inc. *Work Report of 2011 Phase One and Two Diamond Drilling Programs Kasagiminnis Lake Project Pickle Lake Area, Ontario*, Bruce W. Mackie P.Geo., Bruce Mackie Geological Consulting Services, October 2011, page 19.

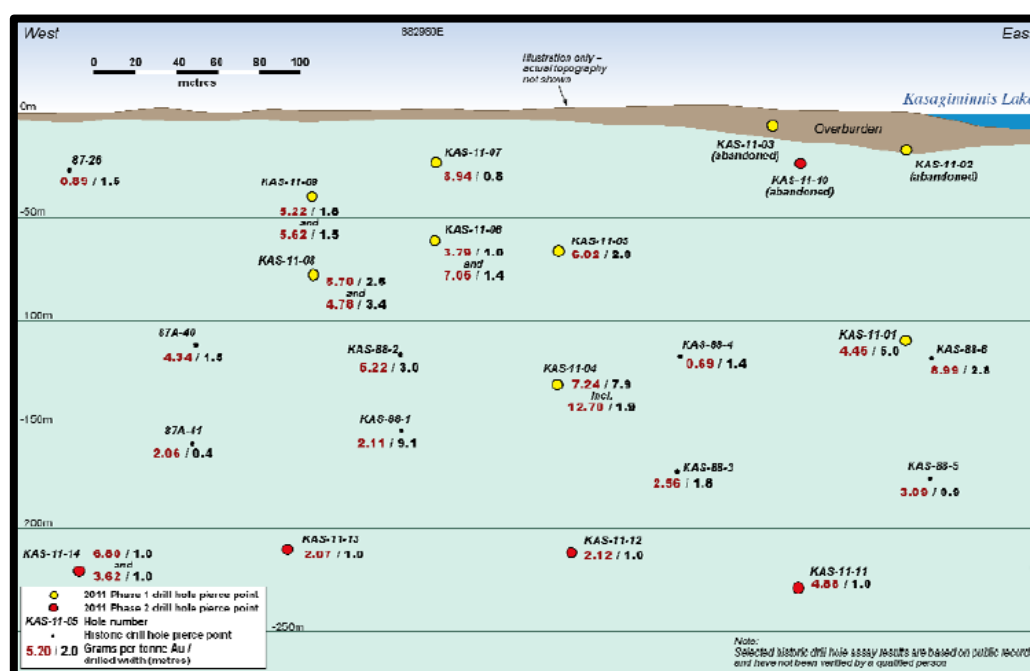


Figure 6. Long section showing 2011 drill hole intercepts of Kasagiminnis Gold Zone. (Extracted from the Manicouagan Minerals Inc. *Work Report of 2011 Phase One and Two Diamond Drilling Programs Kasagiminnis Lake Project Pickle Lake Area, Ontario*, Bruce W. Mackie P.Geo., Bruce Mackie Geological Consulting Services, October 2011, page 21.)

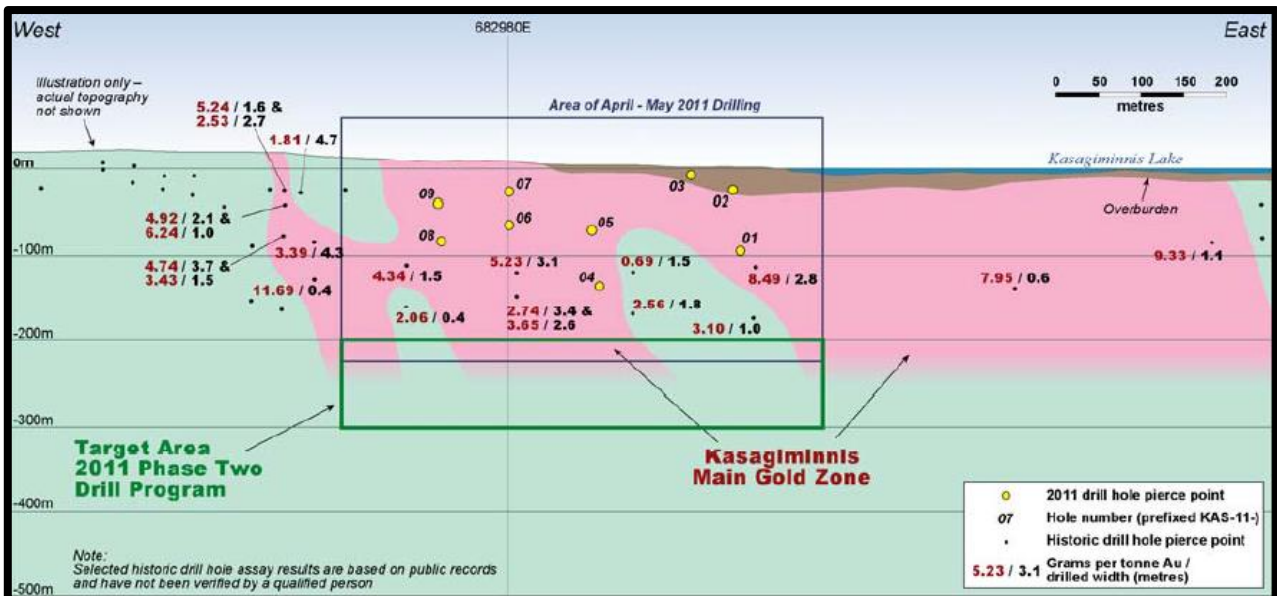


Figure 7. Historical cross section of Kasagiminnis Gold Zone. (Extracted from the Manicouagan Minerals Inc. *Work Report of 2011 Phase One and Two Diamond Drilling Programs Kasagiminnis Lake Project Pickle Lake Area, Ontario*, Bruce W. Mackie P.Geo., Bruce Mackie Geological Consulting Services, October 2011, page 22.)

The reader is cautioned that Ardiden has not undertaken any independent investigation of the dimensions, quantity or grade of the gold mineralization referred to above, therefore the historical data should not be relied upon. At best, Ardiden views this historical data as a conceptual indication of the potential size and grade of the gold deposits in the area, and this data is relevant to ongoing exploration efforts. The reader is further cautioned that the information in this section is not necessarily indicative of the mineralization on the property that is the subject of this report.

DOROTHY-DOBIE LAKE PROPERTY

The Dorothy-Dobie Lakes Property consists of a contiguous block of staked 19 claims, covering 3,184 Ha in the Dobie and Meen Lake areas. This block adjoins the western end of the historical Golden Patricia Mine Property and extends for approximately 14km to the north-west, covering the projected strike extension of the favourable geological host structure.

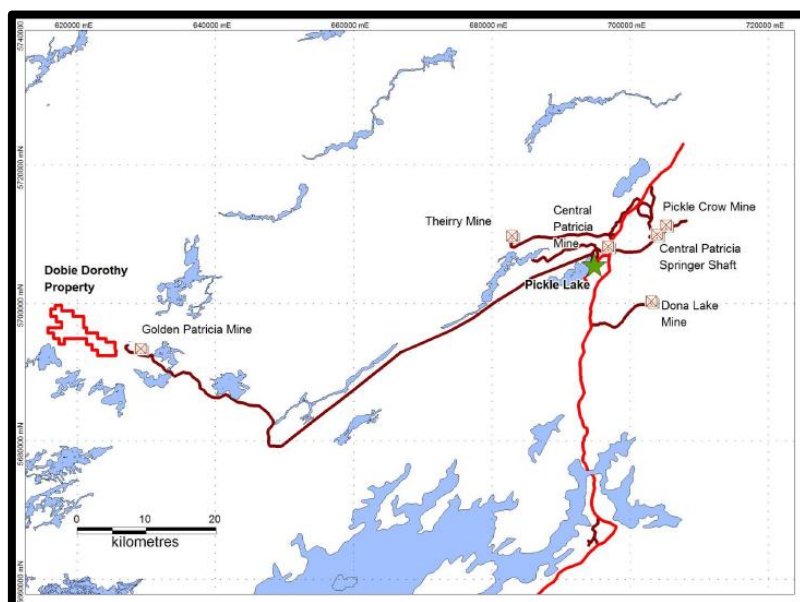


Figure 8. Location map of Dorothy Dobie Lake Property Extracted from the Trillium North Minerals Ltd. *Summer 2007 Dorothy Dobie Property Diamond Drill Program Dobie Lake, Meen Lake and Kawashe Lake Areas Patricia Mining District Ontario*, Caitlin Jeffs, P.Geo. Fladgate Exploration Consulting Corporation, 12 Jun 2008, p7.

The Dorothy-Dobie Lakes Property is located within portions of the Mishkeegogamang First Nation traditional lands. Portions of the Dorothy-Dobie Lakes Property fall within the Cat Lake and Slate Falls land use planning area. This property is accessible by chartered aircraft from Pickle Lake (70km east) or Slate Falls (approximately 40km south-west).

This Dorothy-Dobie Lakes Property hosts six significant gold occurrences extending north-west for approximately 10km along strike from the past-producing Golden Patricia Mine (the Golden Patricia trend):

- Cooper/West Zone;
- Dorothy Main Zone;
- Tonsil Lake Zone;
- Spike Zone;
- Dobie Zone; and
- North Dobie Zone (Figures 8 and 10).

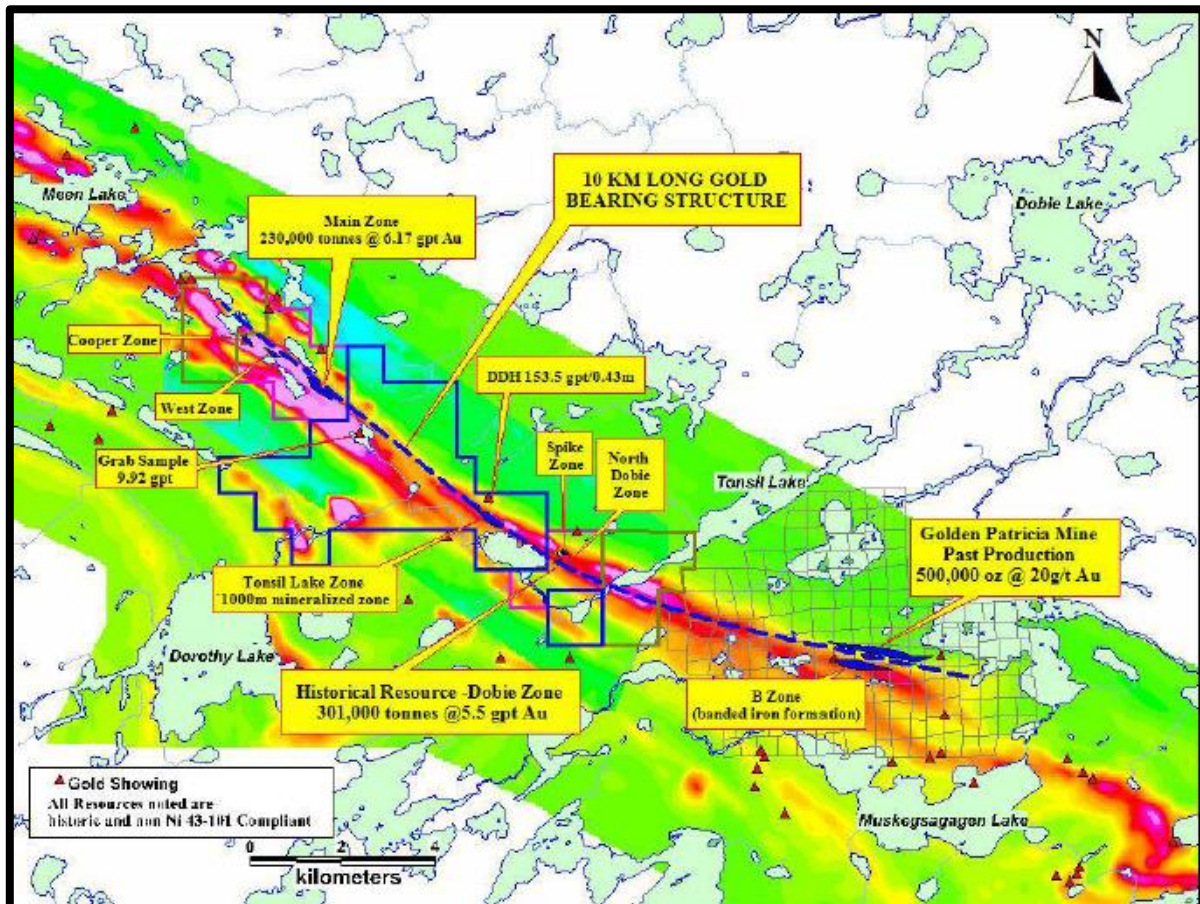


Figure 9. Overview map of the claims in the Dorothy-Dobie Lake Property. (Image sourced from White Metal Resources Corporate Presentation, January 2017)

Approximately 10,000m of diamond drilling was completed on the Dorothy deposit in 1987-1988 by Umex and later by Major General Resources Ltd., focused on the Dorothy Main and Cooper/West zones. The Dorothy Main Zone is comprised of multiple vein systems within a diorite intrusive and the Cooper/West Zone is hosted in mafic volcanic rocks.

Both gold zones are located within the same major shear zone structure accompanied by a 50m wide alteration envelope. Gold mineralization in the Dorothy Main Zone is associated with intense silicification, quartz veining and pyrrhotite-pyrite concentrations up to 10%. Gold mineralization in the Cooper/West Zone is accompanied by pervasive carbonatization and quartz veining. Diamond drilling in Cooper/West Zone in 1988 (DDH #DR 88-34) returned a best assay of **13.7 g/t Au over 1.5m**, and drilling in the Dorothy Main Zone in 1988 returned a best assay

of **472.8 g/t Au** over **0.5 metres** (DDH # DOR-90-43; located at approximately 61775E and 5698200N) (Figures 10 and 11). *Ardiden notes there is no other public assay or drill hole location data available for drill hole DOR 90-43.*

In 2007 Trillium North Minerals Ltd reported in the Tonsil Zone significant gold intercepts including **153.5 g/t Au** over **0.44 metres** in hole 07-DOR-005 from 111.40m downhole (Figures 11, 15 and Table 3). It should be noted that a significant number of assay certificates and drill logs pertaining to this occurrence are missing from the public record and

Table 3. Table of Significant Assay Results from 2007 Drill Program at the Tonsil Zone.

Hole ID	From (m)	To (m)	Interval (m)	Au (g/t)
07-DOR-002	60.66	60.96	.305	4.96
07-DOR-003	61.93	62.23	0.30	1.49
07-DOR-005	55.85	56.46	0.61	1.16
07-DOR-005	111.40	111.84	.44	153.5

Extracted from the Trillium North Minerals Ltd. *Summer 2007 Dorothy Dobie Property Diamond Drill Program Dobie Lake, Meen Lake and Kawashe Lake Areas Patricia Mining District Ontario*, Caitlin Jeffs, P.Geo. Fladgate Exploration Consulting Corporation, 12 Jun 2008, p14.

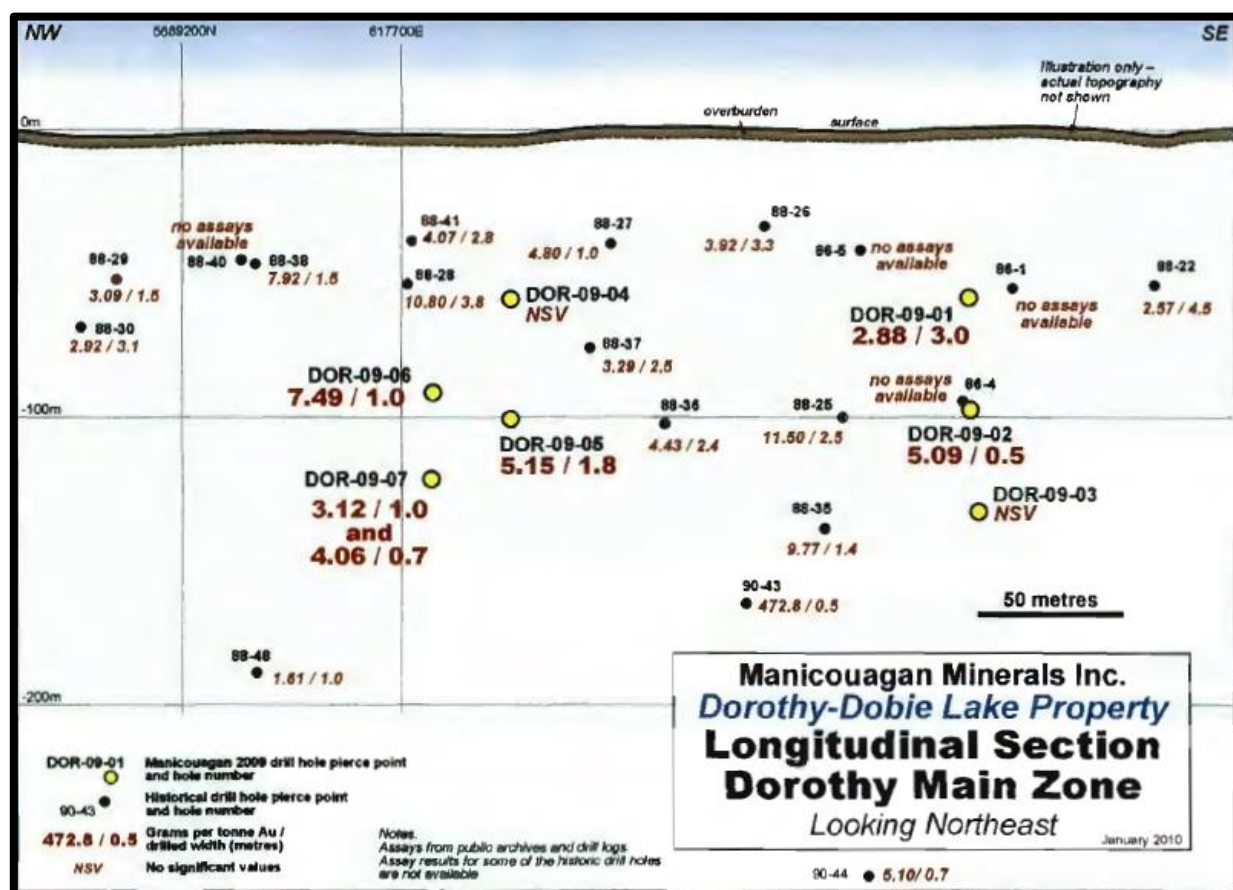


Figure 10. Longitudinal Section Dorothy Main Zone including 2009 and historical drilling results. (Image extracted from the Manicouagan Minerals Inc. *Work Report of 2009 Diamond Drilling Program Dorothy-Dobie Lake Project Pickle Lake Area, Ontario*, Bruce W. Mackie P.Geo., Bruce Mackie Geological Consulting Services, 30 December 2009, page 26. Notes: Assays from public archives and drill logs. Assay results for some of the historic drill holes are not available.)

Historical diamond drilling outside of the Dobie Main Zone indicates the presence of two additional gold bearing structures. DDH # M86-18 drilled at the Dobie #1 site returned 1.9 g/t Au over 3.0m and DDH # MD88-41 in the Spike Zone returned a best assay of **5.99 g/t Au** over **2.9m** from 163.85 m downhole (*Drilling information extracted from the Technical Report on Three Gold Exploration Properties Pickle Lake Area, Ontario, Canada, for Manicouagan Minerals Inc, G.A. Harron, P.Eng., G.A. Harron & Associates Inc, October 13, 2009, page 22 – 24; and Manicouagan Minerals Inc. Work*

Report of 2011 Phase One and Two Diamond Drilling Programs Kasagiminnis Lake Project Pickle Lake Area, Ontario, Bruce W. Mackie P.Geo., Bruce Mackie Geological Consulting Services, October 2011, page 18)

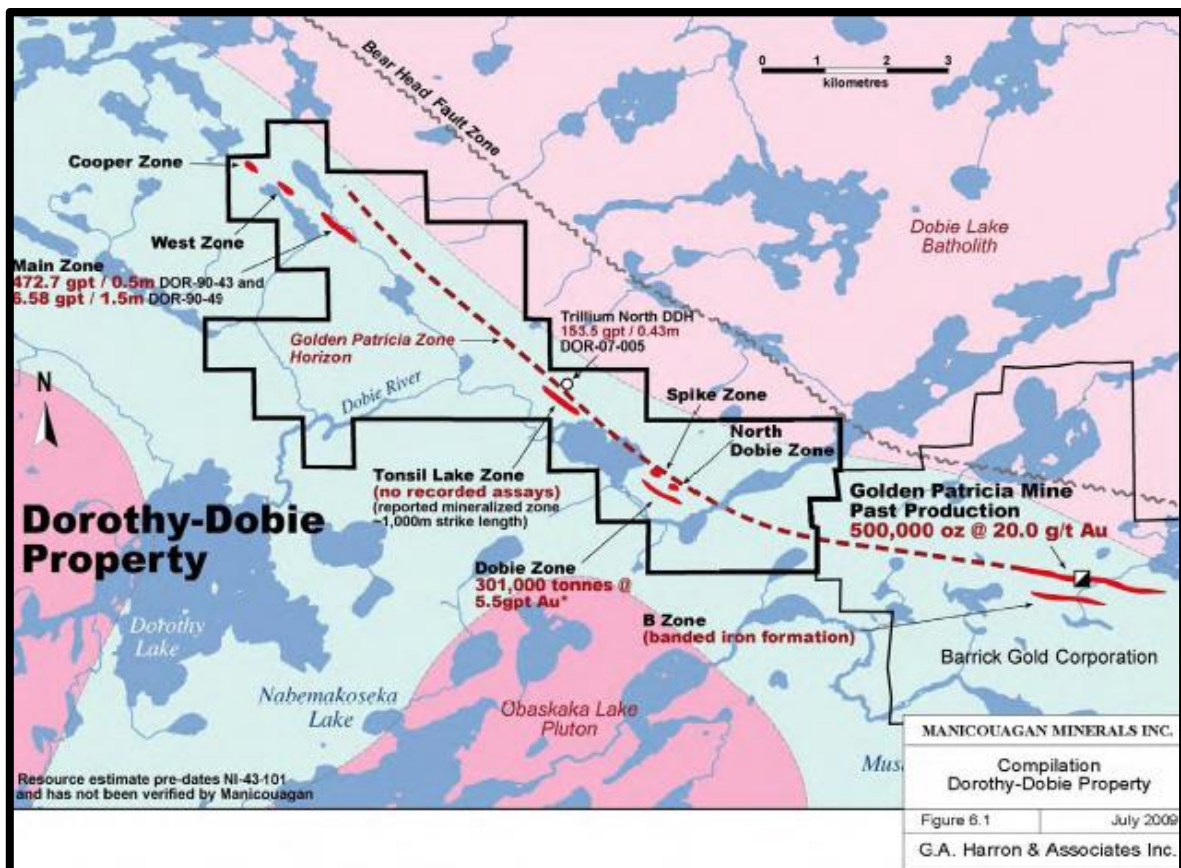


Figure 11. Overview map of the six significant gold occurrences extending northwest along strike from the past-producing Golden Patricia Mine (Image extracted from the Technical Report on Three Gold Exploration Properties Pickle Lake Area, Ontario, Canada, for Manicouagan Minerals Inc, G.A. Harron, P.Eng., G.A. Harron & Associates Inc, October 13, 2009, page 23)

The Dobie Main Zone hosts the non JORC 2012 compliant Dobie gold deposit. This zone is open to the west and is located along the Pickle Lake Deformation Zone.

In 2009, Manicouagan Minerals Inc. drilling intersected a mineralized gold zone on the western end of the Dobie gold deposit. Drilling was successful in identifying a potential bulk tonnage gold exploration target at the Dobie Zone. Diamond drill holes DOB-09-10, 11, 13 and 14 encountered broad zones of gold mineralization (see Tables 3 and; and plan map in Figure 11):

- DOB-09-10: 20.0m @ 1.52 g/t Au including 2.7m @ **5.65** g/t Au.
- DOB-09-11: 31.5m @ 1.39 g/t Au including 1.5m @ **6.48** g/t Au.
- DOB-09-13: 33.2m @ 1.04 g/t Au including 1.0m @ **6.27** g/t Au and 2.0m @ **4.34** g/t Au.
- DOB-09-14: 27.9m @ 1.53 g/t Au including 2.0m @ **5.64** g/t Au.

The Dobie Zone is characterized by strong carbonate-silica alteration hosted within mafic volcanic rocks. To date, the gold bearing zone of mineralization has been traced by Manicouagan Minerals Inc. for approximately 180 metres along strike and to a depth of 100 metres. It remains open at depth and to the north-west (Assay and drilling results sourced from Manicouagan Minerals Inc., TSXV News Release "MANICOUAGAN MINERALS ANNOUNCES FINAL DRILL RESULTS FROM THE DOROTHY-DOBIE LAKE PROPERTY", dated 19 January 2010).

Table 4. Table of Significant Assay Results from 2009 Drill Program at the Dobie Zone.

Dobie Zone Summary of Significant Intersections				
Hole	From (m)	To (m)	Length (m)	Au gpt
DOB-09-08	49.5	49.8	0.3	4.32
DOB-09-09	no significant values			
DOB-09-10	88.0	108.0	20.0	1.52
incl.*	92.7	95.4	2.7	5.65
and	111.4	112.2	0.8	5.27
DOB-09-11	102.5	134.0	31.5	1.39
incl.	132.5	134.0	1.5	6.48
DOB-09-12	35.0	45.4	10.4	1.86
incl.*	38.8	40.0	1.2	4.92
and*	44.0	45.4	1.4	4.62
DOB-09-13	26.1	34.0	7.9	0.90
and**	49.0	82.2	33.2	1.04
incl.	49.0	50.0	1.0	6.27
and*	62.6	64.6	2.0	4.34
DOB-09-14	63.0	90.9	27.9	1.53
incl.	77.0	79.0	2.0	5.64
DOB-09-15	67.6	70.6	3.0	2.21
	74.0	77.0	3.0	1.89
DOB-09-16	101.0	109.5	8.5	2.00

Dorothy Main Zone Summary of Significant Intersections				
Hole	From (m)	To (m)	Length (m)	Au gpt
DOR-09-01	59.5	62.5	3.0	2.88
DOR-09-02	81.7	82.2	0.5	5.09
DOR-09-03	no significant values			
DOR-09-04	no significant values			
DOR-09-05	53.5	55.3	1.8	5.15
DOR-09-06	74.0	75.0	1.0	7.49
DOR-09-07	64.0	65.0	1.0	3.12
DOR-09-07	87.0	87.7	0.7	4.06

note: true widths are currently estimated at 60-85% of drilled widths

Drilling information extracted from the Manicouagan Minerals Inc. *Work Report of 2011 Phase One and Two Diamond Drilling Programs Kasagiminnis Lake Project Pickle Lake Area, Ontario*, Bruce W. Mackie P. Geo., Bruce Mackie Geological Consulting Services, October 2011, page 24.

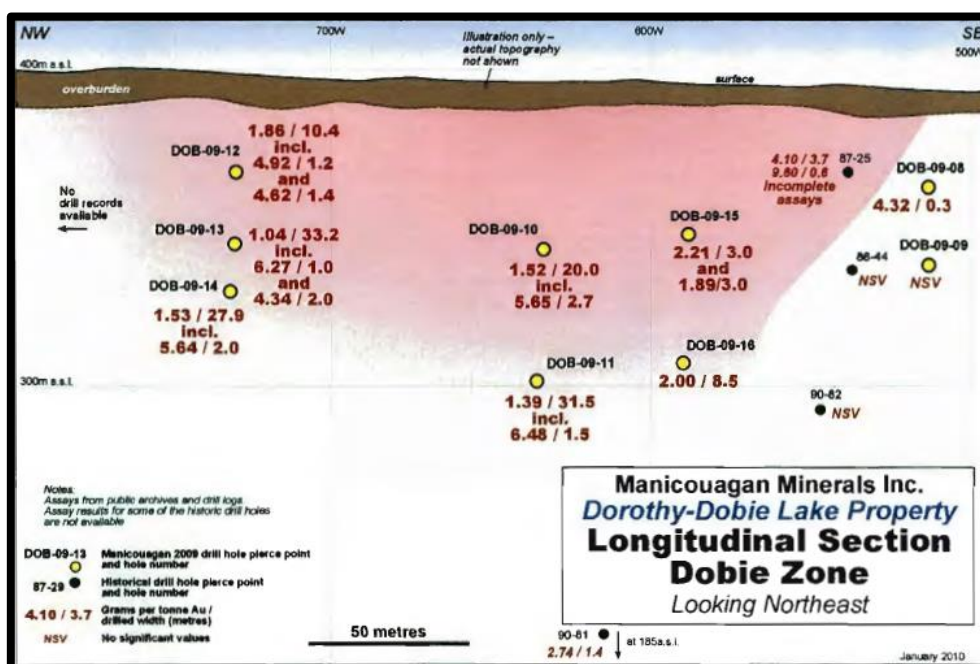


Figure 12. Longitudinal Section Dobie Zone with 2009 drilling results. (Image extracted from the Manicouagan Minerals Inc. *Work Report of 2011 Phase One and Two Diamond Drilling Programs Kasagiminnis Lake Project Pickle Lake Area, Ontario*, Bruce W. Mackie P. Geo., Bruce Mackie Geological Consulting Services, October 2011, page 29).

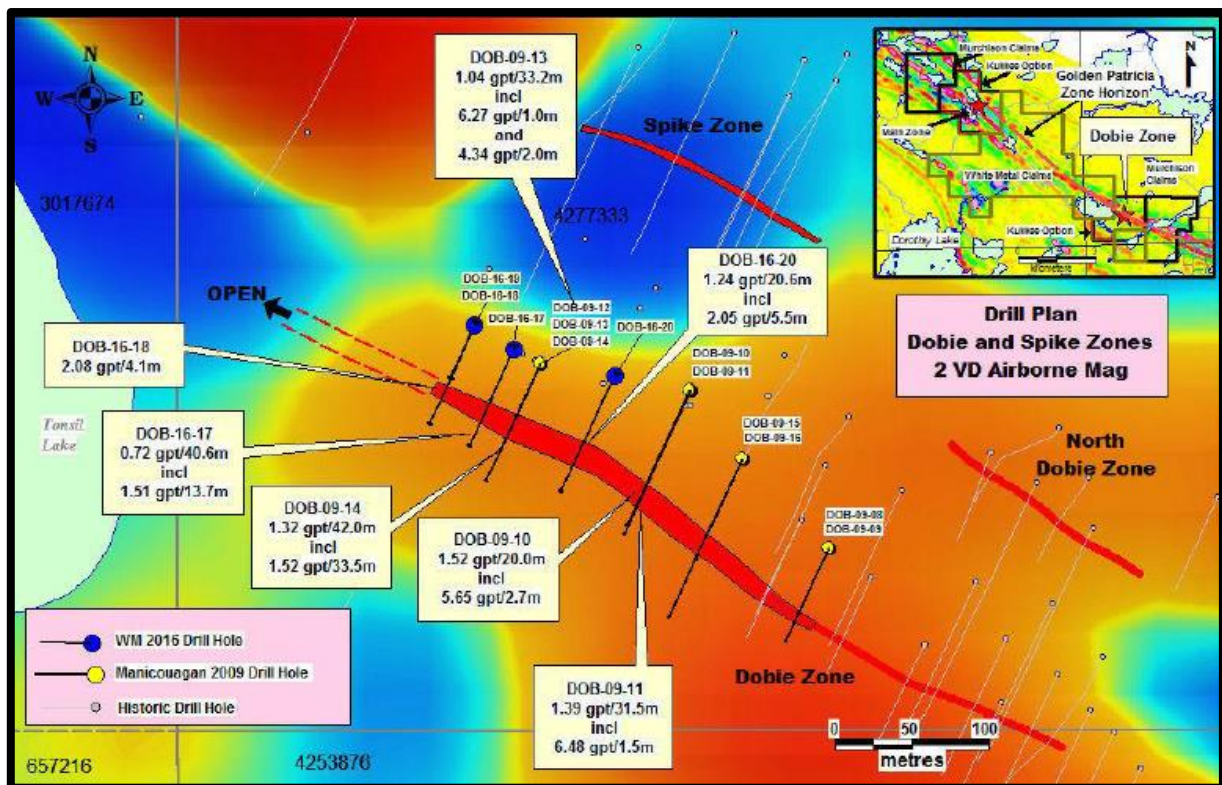


Figure 13. Plan map of the broad Dobie gold mineralisation zones with 2009 drilling results. (Image sourced from White Metal Resources Website, www.whitemetalres.com/pickle-lake-properties.html 30 July 2017)

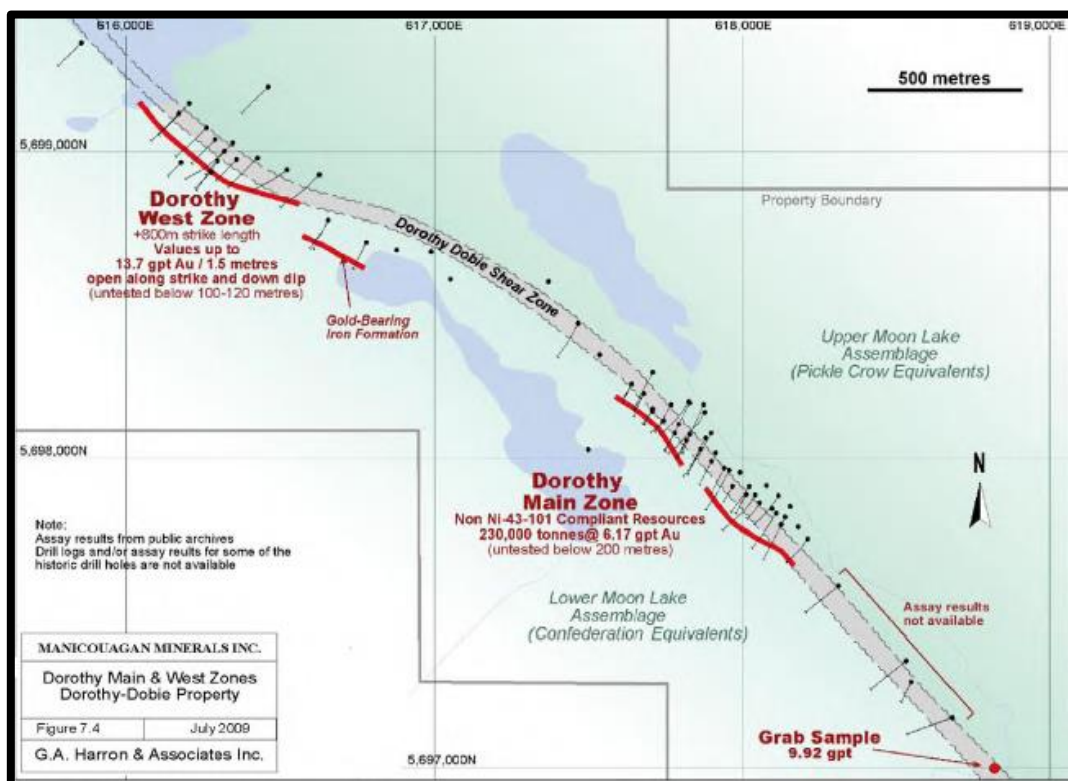


Figure 14. Plan map of the Dorothy Dobie Shear Zone, showing the gold mineralisation at the Dorothy West Zone and Dorothy Main Zone. (Image extracted from the Technical Report on Three Gold Exploration Properties Pickle Lake Area, Ontario, Canada, for Manicouagan Minerals Inc, G.A. Harron, P.Eng., G.A. Harron & Associates Inc, October 13, 2009, page 41)

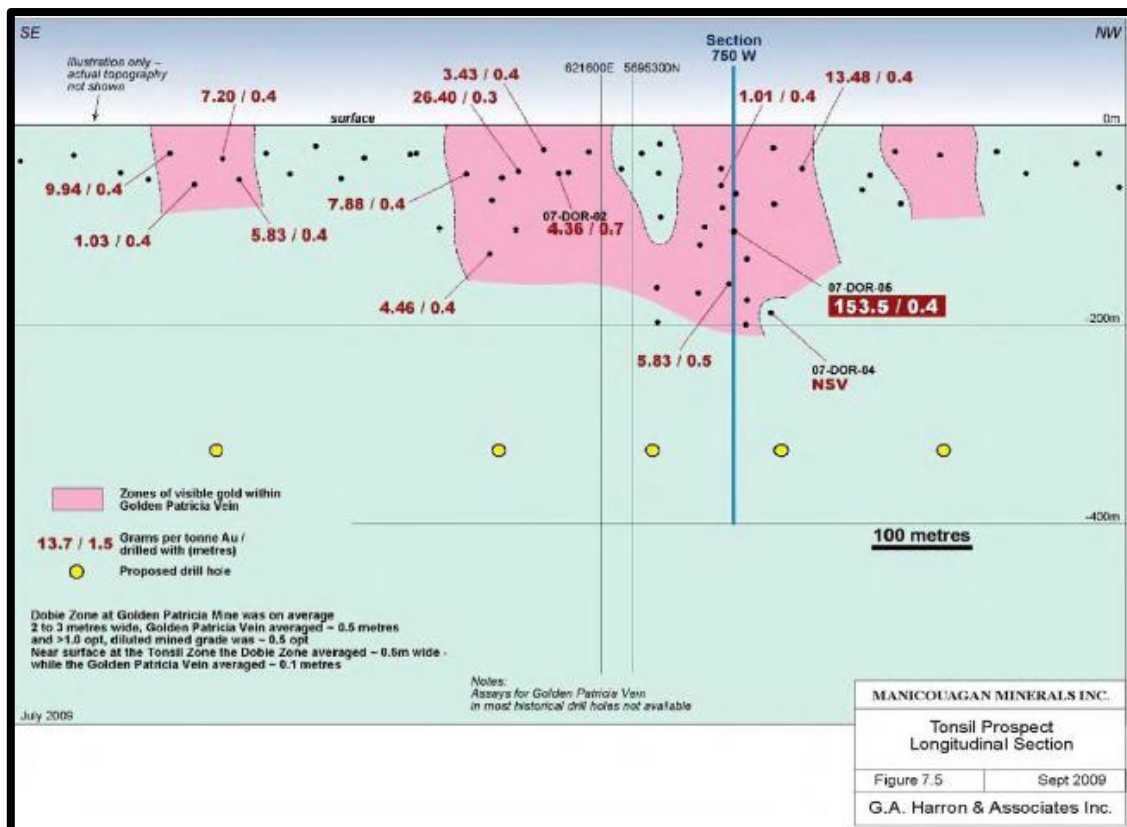


Figure 15. Tonsil Prospect Longitudinal Section at the Tonsil Zone including 2009 and historical drilling results. (Image extracted from the Technical Report on Three Gold Exploration Properties Pickle Lake Area, Ontario, Canada, for Manicouagan Minerals Inc, G.A. Harron, P.Eng., G.A. Harron & Associates Inc, October 13, 2009, page 43)

Wheeled aircraft can access an airstrip at the Golden Patricia Mine, with the permission of Barrick Gold Corporation. Access to all parts of the property will require helicopter transport from a central camp facility. Servicing the camp will require fixed wing aircraft support. In winter time, access to the airstrip and other parts of the property can be achieved using a winter road extending from Pickle Lake. An electric power line that once connected the Golden Patricia Mine to the provincial hydro electric grid at Central Patricia still exists. This utility could be reactivated if required. (Information extracted from the Technical Report on Three Gold Exploration Properties Pickle Lake Area, Ontario, Canada, for Manicouagan Minerals Inc, G.A. Harron, P.Eng., G.A. Harron & Associates Inc, October 13, 2009, page 21)

The reader is cautioned that Ardiden has not undertaken any independent investigation of the dimensions, quantity or grade of the gold mineralization referred to above, therefore the historical data should not be relied upon. At best, Ardiden views this historical data as a conceptual indication of the potential size and grade of the gold deposits in the area, and this data is relevant to ongoing exploration efforts. The reader is further cautioned that the information in this section is not necessarily indicative of the mineralization on the property that is the subject of this report.

DEPOSIT MODELS

The Harron 2009 report states, that there are two main types of gold deposits occurring in the area. The most common is the quartz lode type, which occupies fractures and may follow a single fissure with well-defined walls, or may consist of parallel veins surrounding inclusions of wall rock. Veins of this type are generally contorted and drag-folded. They may contain tourmaline, chlorite, sericite and native gold with a very low content of sulphide minerals. This group of veins is represented by most of the veins in the Pickle Crow Mine area, including the main (Howell) vein, and the quartz veins at the Central Patricia No. 2 Operation. The veins tend to be relatively long and narrow with raking shoots developed at irregular intervals.

The second type of gold deposits is characterized by a stockwork mineralization in iron formation. The laminated chert magnetite rock contains a network of fractures filled with quartz, pyrite, pyrrhotite, arsenopyrite and native

gold accompanied by sulphidic wall rock alteration. The ore bodies tend to be wide but discontinuous along strike, occurring where the formations are intersected by D2 shear structures. The ore bodies at the Central Patricia Mine and some of the mineralized zones at the Pickle Crow Mine are of this type. (Deposit information extracted from the Technical Report on Three Gold Exploration Properties Pickle Lake Area, Ontario, Canada, for Manicouagan Minerals Inc, G.A. Harron, P.Eng., G.A. Harron & Associates Inc, October 13, 2009, page 54)

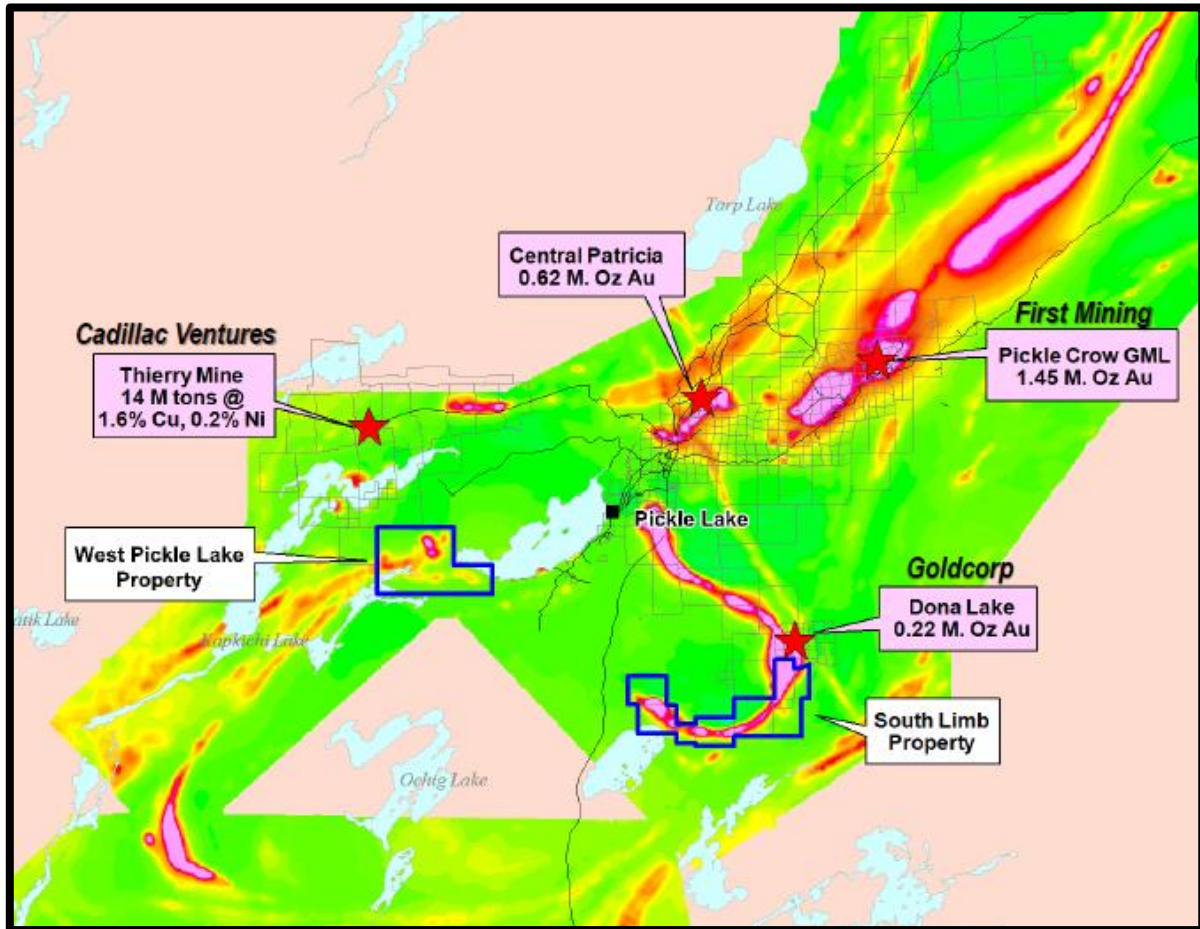


Figure 16. Plan map showing the location of the South Limb and Pickle Lake West Properties. (Image sourced from White Metal Resources Website, www.whitemetalres.com/pickle-lake-properties.html 30 July 2017)

SOUTH LIMB PROPERTY

The South Limb Property consists of seven contiguous staked mining claims covering 1,056ha in the Dona Lake area. The project is located in north-western Ontario, approximately 10km south-east of the town of Pickle Lake. The Provincial Highway 599 is located approximately 1km west of the South Limb Property, providing road access to the drill targets areas.

The South Limb Property has good exploration potential and covers the southern extension of the gold bearing iron formation that hosts the past-producing Dona Lake Mine. White Metal Resources has identified numerous EM anomalies representing possible structural gold targets and historical drilling has incepted good gold results.

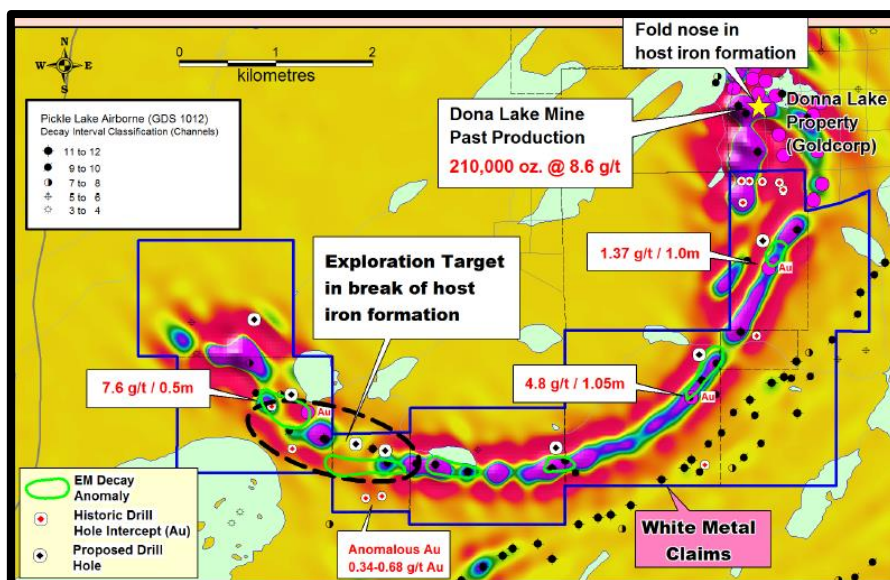


Figure 17. Plan view of the South Limb Property showing the numerous EM anomalies (Image sourced from White Metal Resources Corp., Corporate Presentation, January 2017)

PICKLE LAKE WEST PROPERTY

The Pickle Lake West Property consists of five contiguous staked mining claims covering 1,088ha in the Kapkichi Lake area. The project is located in north-western Ontario approximately 6km south-west of the town of Pickle Lake. The Provincial Highway 599 is located approximately 4km east of the Pickle Lake West Property.

The Pickle Lake West Property is an early-stage exploration opportunity, with no previous drilling completed at the project.

The Pickle Lake West Property is considered highly prospective due to:

- White Metal Resources staked the project in 2016 due to the identified folding and deformation based on magnetics which have a similar footprint to a number of other gold mineralisation zones in the area;
- White Metal Resources obtained anomalous gold assay results in grab samples from a boulder located south of magnetic disruption; and
- The project is along strike to the west of the Central Patricia mine.

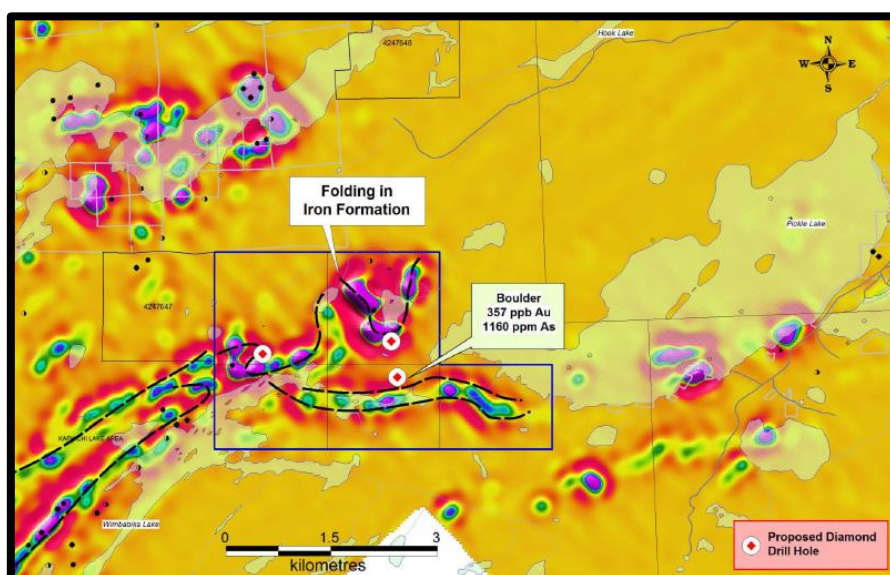


Figure 18. Plan view of the Pickle Lake West Property showing the numerous EM anomalies (Image sourced from White Metal Resources Corporate Presentation, January 2017)

MULTI ELEMENT POTENTIAL

The Pickle Lake Gold Properties also have the potential to contain other base metals including copper, nickel and Platinum Group Elements (PGE) as demonstrated by the Thierry Open Pit and Underground Mine which has a combination of copper, nickel, silver, gold, platinum and palladium (*Resource information sourced from Cadillac Ventures Inc, website www.cadillacventures.com/s/Ontario.asp, 30 July 2017*), located just north of the Pickle Lake West Property, and the copper mineralisation identified on the western side of the Dorothy-Dobie Lake Property (Figures 3 and 8).

ACQUISITION RATIONALE

The proposed acquisition of the Pickle Lake Gold Properties is consistent with Ardiden's strategy of establishing a strong pipeline of prospective mineral projects ranging from greenfields discovery opportunities to more advanced, near-term resource development projects that can create shareholder value. These projects are all located in Tier-1 jurisdictions with exposure to outstanding market fundamentals.

The Pickle Lake properties provide the potential for near-term development and gold production, which alongside Ardiden's fast-tracked development of the North Aubry prospect at the Seymour Lake Lithium Project, provides an opportunity to diversify the Company's commodity base and potentially provide multiple revenue streams.

OPTION AGREEMENT TERMS

The Dorothy-Dobie Lake Property and Kasagiminnis Lake Property are jointly held between White Metal Resources, Murchison Minerals and Ken Kukkee, and are subject to the conditions of Option Agreements that were executed in 2016. The South Limb and Pickle Lake West properties are 100% owned by White Metal Resources.

Under the terms of the Option Agreement, Ardiden can acquire a conditional 100% of the Pickle Lake Gold Properties ("the Project") for aggregate payments to White Metals Resources of CAD\$140,000 and 5,592,949 ordinary Ardiden shares as follows:

- Ardiden shall pay White Metal Resources a non-refundable deposit of CAD\$70,000 and 1,592,949 Ardiden shares, within 5 business days of executing the Option Agreement (*this includes C\$40,000 and 592,949 shares as reimbursement to White Metal Resources for annual instalment payments made during negotiations, pursuant to the original Kukkee and Murchison Option Agreements*);
- Ardiden will have the exclusive right to complete due diligence on the project for 12 months (to allow access to site in the 2017/2018 field season);
- After 6 months of Due Diligence review, Ardiden is required to make an additional payment of CAD\$20,000 and 1,000,000 Ardiden shares, to retain the exclusive due diligence right for the remaining six months;
- Upon completion of due diligence, Ardiden may elect to exercise the option to acquire the Project; and
- Should Ardiden elect to acquire the Project, Ardiden shall pay White Metal Resources a further CAD\$50,000 and 3,000,000 ordinary Ardiden shares.

To acquire a full 100% interest in all of Pickle Lake Gold properties, Ardiden will assume White Metal Resources' obligations existing in the underlying Option Agreements that were executed with Murchison Minerals and Ken Kukkee in 2016.

2016 OPTION TERMS

Ken Kukkee: The option required White Metal Resources to pay Kukkee CAD\$80,000 (balance of CAD\$40,000 outstanding) and issue 1,500,000 shares (balance of 1,050,000 White Metals Resources shares outstanding, which converted to Ardiden shares equals 2,490,387 shares) over the four-year option period to acquire 100% ownership

of the project claims. Further, Kukkee is entitled to an annual advanced royalty payment of \$50,000 from 15 April 2026, if commercial scale production is not achieved by that time.

Murchison Minerals Ltd: The option required White Metal Resources to pay Murchison CAD\$50,000 (balance of CAD\$20,000 outstanding) over the three-year option period and expend CAD\$1,200,000 over three years (work commitment) to acquire 100% ownership project claims.

ROYALTIES

White Metal Resources will maintain the right to purchase an existing 1% NSR (held by Murchison Minerals) on the Murchison joint venture claims on the Dorothy-Dobie and Kasagiminnis properties, of which 0.5% NSR can be purchased for CAD\$1,000,000 and the second 0.5% NSR may be purchased for CAD\$1,500,000. White Metal Resources will also have the right of first refusal ("ROFR") on the NSR.

Ken Kukkee, the original vendor of the Kasagiminnis property, will retain a 2% NSR of which 1% NSR can be purchased by Ardiden for CAD\$1,000,000 along with a ROFR on the remaining 1% NSR.

With respect to the Ken Kukkee claims located within the Dorothy-Dobie claim group, Kukkee retains a 2% NSR, of which 1% NSR can be purchased by Ardiden for CAD\$1,000,000. Ardiden shall retain a ROFR on the remaining 1% NSR. In addition, White Metal Resources will hold a 1% NSR on this same Kukkee Option claim group.

Finally, White Metal Resources will retain a 2% NSR on the Pickle Lake West and South Limb Properties, of which 1% NSR can be purchased by Ardiden for CAD\$1,000,000. Ardiden will have a ROFR on the remaining 1% NSR.

NEXT STEPS

Ardiden has commenced a full review of all historical drilling, sampling and metallurgical data available for the Pickle Lake Gold Properties, and will then undertake further geological exploration, potentially including but not limited to, surface sampling, soil surveys and further drilling.

In parallel with the completion of due diligence for the Pickle Lake Gold Properties, Ardiden will continue to rapidly progress the maiden JORC 2012 Mineral Resource drilling program underway at the Seymour Lake Lithium Project.

These activities, combined with exploration programs underway at the Company's other projects, will create a diverse exploration and development pipeline, ranging from early-stage exploration to advanced resource development opportunities.

Ardiden looks forward to providing further updates as they come to hand.

Table 5. ASX Listing Rule 5.12, Pickle Lake Properties Historical Mineral Resource Estimates

5.12.1	The source and date of the historical estimates or foreign estimates.	<p>Resource information from the Dorothy Main (1990), Dobie Lake (1987) and Kasagiminnis Lake gold deposits (1988) were extracted from the Technical Report on Three Gold Exploration Properties Pickle Lake Area, Ontario, Canada, for Manicouagan Minerals Inc, G.A. Harron, P.Eng., G.A. Harron & Associates Inc, October 13, 2009, page 4.</p> <ul style="list-style-type: none"> Dorothy Main Deposit: 46,600 ounces of gold @ 6.17 g/t Au (MNDM Mineral Deposit Inventory Number: MDI52006NW00003, deposit located at 617883E and 5698053N) Dobie Lake Deposit: 53,000 ounces of gold @ 5.5 g/t Au (MNDM Mineral Deposit Inventory Number: MDI52006NE00004, deposit located at 623400E and 5692095N); and Kasagiminnis Lake Deposit: 400,000 ounces of gold @ 4.79 g/t
--------	---	---



		<p>Au (MNDM Mineral Deposit Inventory Number: MDI52008SW00007, deposit located at 682186E and 5683313N).</p> <p>Ardiden is unable to verify the resources defined on the Pickle Lake Gold Properties.</p> <p>All reference to historical drilling results at the Dorothy Main, Dobie Lake and Kasagiminnis Lake deposits were sourced from publicly available documents and are to be considered from a historical point of view and not relied upon.</p> <p>Ardiden views this historical data as a conceptual indication of the potential size and grade of the gold deposits in the area, and this data is relevant to ongoing exploration efforts. The reader is further cautioned that the information in this section is not necessarily indicative of the mineralization on the property that is the subject of this report.</p>
5.12.2	Whether the historical estimates of foreign estimates use categories of mineralization other than those defined in Appendix 5A (JORC Code) and if so an explanation of the differences.	<p>Dorothy Main, Dobie Lake and Kasagiminnis Lake gold deposits were calculated prior to CIM National Instrument 43-101 or JORC (2012) guidelines and, as such, should only be considered from a historical point of view and not relied upon.</p> <p>The estimates were not classified under an established reporting code or guideline.</p>
5.12.3	The relevance and materiality of the historical estimates or foreign estimates to the entity.	<p>The estimates for the Dorothy Main, Dobie Lake and Kasagiminnis Lake gold deposits are relevant and material to Ardiden's decision to acquire the Pickle Lake Gold Properties, as it pertains to a project that could potentially be economically viable for the entity.</p>
5.12.4	The reliability of the historical estimates or foreign estimates, including by reference to any of the criteria in Table 1 of Appendix 5A (JORC CODE) which are relevant to understanding the reliability of the historical estimates or foreign estimates.	<p>The grade range of the historical data was supported by limited field reconnaissance, mapping, and inspection of historical drill core.</p> <p>However, until a full due diligence program can be undertaken and completed by Ardiden, including but not limited to drilling on and around the Dorothy Main, Dobie Lake and Kasagiminnis Lake gold deposits, Ardiden views this historical data as a conceptual indication of the potential size and grade of the gold deposits in the area, and this data is relevant to ongoing exploration efforts.</p> <p>The reader is further cautioned that the information in this section is not necessarily indicative of the mineralization on the property that is the subject of this report.</p>
5.12.5	To the extent known, a summary of the work programs on which the historical estimates or foreign estimates are based and a summary of the key assumptions, mining and processing parameters and methods used to prepare the historical estimates or foreign estimates.	<p>All reference to historical drilling results and the Dorothy Main, Dobie Lake and Kasagiminnis Lake gold deposits were sourced from publicly available documents and are to be considered from a historical point of view and not relied upon.</p> <p>The historical estimates for the Dorothy Main, Dobie Lake and Kasagiminnis Lake gold deposits was based on data from historical channel sampling and historical diamond drilling, details of which are not available at this time.</p>
5.12.6	Any more recent estimates or data relevant to the reported mineralization available to entity.	<p>There are no more recent estimates relevant to the reported mineralization for the Dorothy Main, Dobie Lake and Kasagiminnis Lake gold deposits.</p>



5.12.7	The evaluation and/or exploration work that needs to be completed to verify the historical estimates or foreign estimates as mineral resources or ore reserves in accordance with Appendix 5A (JORC Code).	It is anticipated that an updated resource estimate will require additional sampling and diamond drilling, additional QA sampling, density measurements, and surveying to be completed at the Dorothy Main, Dobie Lake and Kasagiminnis Lake gold deposits to allow Ardiden to verify of the historical data and estimation of Mineral Resources and reporting under the JORC Code (2012 edition)
5.12.8	The proposed timing of any evaluation and/or exploration work that the entity intends to undertake and comment on how the entity intends to fund that work.	Ardiden intends to evaluate the <i>in situ</i> mineralisation at and around the Dorothy Main, Dobie Lake and Kasagiminnis Lake gold deposits during the option period utilising current cash at bank.
5.12.9	A cautionary statement proximate to, and with equal prominence as, the reported historical estimates or foreign estimates.	Ardiden cautions that a Competent Person has not done sufficient work to classify this historical estimate as a Mineral Resource in accordance with the JORC Code 2012 Edition. It is uncertain that, following evaluation, it will be possible to report a Mineral Resource in accordance with the JORC Code 2012 Edition.
5.12.10	A statement by a named competent person or persons that the information in the market announcement provided under rules 5.12.2 to 5.12.7 is an accurate representation of the available data and studies for the material mining project. The statement must include the information referred to in rule 5.22(b) and (c).	The information described under rules 5.12.2 to 5.12.7 was compiled by Mr Robert Chataway, who is a member of the Association of Professional Geologists of Ontario. Mr Chataway is not a full-time employee of the Company. Mr Chataway is employed as a Consultant Geologist. Mr Chataway has more than five years relevant exploration experience, and qualifies as a Competent Person as defined in the 2012 edition of the "Australasian Code for Reporting of Exploration Results, Mineral Resources and Ore Reserves" (the JORC Code). Mr Chataway consents to the inclusion of the information in this report in the form and context in which it appears.

THIS ANNOUNCEMENT EFFECTIVELY CEASES THE TRADING HALT REQUESTED BY THE COMPANY ON 1 AUGUST 2017. THE COMPANY IS NOT AWARE OF ANY REASON WHY THE ASX WOULD NOT ALLOW TRADING TO RECOMMENCE IMMEDIATELY.

ENDS

For further information:

Investors:

Brad Boyle
Ardiden Ltd
Tel: +61 (0) 8 6555 2950

Media:

Nicholas Read
Read Corporate
Mobile: 0419 929 046

About Ardiden Ltd

Ardiden Limited (ASX: ADV) is an emerging international strategic metals company which is focused on the exploration, evaluation and development of multiple projects located in the established mining jurisdiction of Ontario, Canada.

The 100%-owned Seymour Lake Lithium Project comprises 7,019 Ha of mining claims and has over 4,000m of historic drilling. Mineralisation is hosted in extensive outcropping spodumene-bearing pegmatite structures with widths up to 26.13m and grades of up to 6.0% Li₂O. These high-grade pegmatite structures have been defined over a 5km strike length.

The 100%-owned Root Lake Lithium Project is located in Ontario, Canada. The project comprises 1,013 Ha of mining claims and has over 10,000m of historic drilling. Mineralisation is hosted in extensive outcropping spodumene-bearing pegmatite structures with widths up to 19m and grades of up to 5.10% Li₂O. In addition, tantalum grades of up to 380 ppm were intersected.

The 100%-owned Root Bay lithium project is strategically located approximately 5km to the east of the recently acquired Root Lake Lithium Project and consists of three claim areas, totalling 720 hectares. The project was staked by Ardiden as part of its regional exploration focus in and around the Root Bay spodumene-bearing pegmatite. Initial observations of the exposed pegmatite are characterized by coarse white albite, grey quartz and pale grey-green spodumene crystals up to 10cm long.

The 100%-owned Manitouwadge Flake Graphite Project covers an area 5,300 Ha and has a 20km strike length of EM anomalies with graphite prospectivity. Previous preliminary metallurgical testwork indicated that up to 80% of the graphite at Manitouwadge is high value jumbo or large flake graphite. Testwork also indicated that simple, gravity and flotation beneficiation can produce graphite purity levels of up to 96.8% for jumbo flake and 96.8% for large flake. With the proven caustic bake process, ultra-high purity (>99.95%) graphite can be produced. The graphite can also be processed into high value expandable graphite, high quality graphene and graphene oxide.

The Wisa Lake Lithium project (under option to acquire 100%) is located 80km east of Fort Frances, in Ontario, Canada and only 8km north of the Minnesota/US border. The property is connected to Highway 11 (Trans-Canada), which is located 65km north via an all-weather road that crosses the centre of the project. The Wisa Lake Lithium Project consists of five claims (1,200 hectares) and covers the historical drilling location of the North Zone. Ardiden is aiming to commence a limited drill program to drill test and verify the historical lithium results.

The Bold Properties project (under option to acquire 100%) is located approximately 50km north-east of the town of Mine Centre in Ontario, Canada. The property is connected to Highway 11 (Trans-Canada), which is located 25km south via an all-weather road. The Bold Property Project consists of four claims (1,024 hectares) and covers a number of anomalous sulphide zones. In 1992, Hexagon Gold (Ontario) Ltd. completed a total of 17 drill holes in multiple locations on and around the Bold Property Project at various depths of up to 428m down-hole. The nine grab samples that were collected by Hexagon in 1992 returned encouraging grades of up to 0.33% cobalt, 5.54% copper and 0.73% nickel, confirming the significant exploration potential.

All projects located in an established mining province, with good access to infrastructure (road, rail, power, phone and port facilities) and local contractors and suppliers.

Competent Person's Statement

The information in this report that relates to exploration results for the Pickle Lake Gold Properties and is based on, and fairly represents, information and supporting geological information and documentation in this report has been reviewed by Mr Robert Chataway who is a member of the Association of Professional Geologists of Ontario. Mr Chataway is not a full-time employee of the Company. Mr Chataway is employed as a Consultant Geologist. Mr Chataway has more than five years relevant exploration experience, and qualifies as a Competent Person as defined in the 2012 edition of the "Australasian Code for Reporting of Exploration Results, Mineral Resources and Ore

Reserves" (the JORC Code). Mr Chataway consents to the inclusion of the information in this report in the form and context in which it appears.

Forward Looking Statement

This announcement may contain some references to forecasts, estimates, assumptions and other forward-looking statements. Although the company believes that its expectations, estimates and forecast outcomes are based on reasonable assumptions, it can give no assurance that they will be achieved. They may be affected by a variety of variables and changes in underlying assumptions that are subject to risk factors associated with the nature of the business, which could cause actual results to differ materially from those expressed herein. All references to dollars (\$) and cents in this presentation are to Australian currency, unless otherwise stated. Investors should make and rely upon their own enquires and assessments before deciding to acquire or deal in the Company's securities.

Table 6. Drill hole collar locations for the Kasagiminnis Lake Project from 2011 drill program.

HOLE-ID	EAST	NORTH	ELEV	DEPTH	AZIMUTH	DIP
KAS-11-01	682720	5683250	383	161.65	180	-65
KAS-11-02	682720	5683250	383	18.3	180	-50
KAS-11-03	682657	5683225	383	9.1	180	-60
KAS-11-04	682557	5683213	383	165	180	-80
KAS-11-05	682557	5683213	383	127	180	-75
KAS-11-06	682500	5683194	383	101	180	-75
KAS-11-07	682500	5683194	383	106	180	-55
KAS-11-08	682450	5683213	383	147	180	-45
KAS-11-09	682450	5683213	383	125	180	-65
KAS-11-10	682670	5683286	388	76.0	180	-75
KAS-11-11	682672	5683286	388	266.3	180	-75
KAS-11-12	682548	5683281	385	259.25	180	-75
KAS-11-13	682434	5683278	391	225.2	180	-75
KAS-11-14	682329	5683283	391	268.5	180	-75

Extracted from the Manicouagan Minerals Inc. *Work Report of 2011 Phase One and Two Diamond Drilling Programs Kasagiminnis Lake Project Pickle Lake Area, Ontario*, Bruce W. Mackie P.Geo., Bruce Mackie Geological Consulting Services, October 2011, page 18.

Table 7. Drill hole collar locations for the Dorothy Dobie Property from 2007 drill program.

Hole ID	UTM Proj	East UTM	North UTM	Elevation (m)	Azimuth	Dip	Length (m)	Size	Comments
07-DOR-001	NAD83Z15	N/A	N/A	N/A	N/A	N/A	N/A	N/A	Cancelled
07-DOR-002	NAD83Z15	621675	5687521	398	206	-48	83	BQW	Completed
07-DOR-003	NAD83Z15	621072	5695382	401	201	-55	102	BQW	Completed
07-DOR-004	NAD83Z15	620541	5695510	396	225	-70	212	BQW	Completed
07-DOR-005	NAD83Z15	621518	5695468	402	211	-72	151	BQW	Completed
07-DOR-006	NAD83Z15	621518	5695468	402	211	-43	111	BQW	Completed
07-DOR-007	NAD83Z15	N/A	N/A	N/A	N/A	N/A	N/A	N/A	Cancelled
07-DOR-008	NAD83Z15	N/A	N/A	N/A	N/A	N/A	N/A	N/A	Cancelled

Extracted from the Trillium North Minerals Ltd. *Summer 2007 Dorothy Dobie Property Diamond Drill Program Dobie Lake, Meen Lake and Kawashe Lake Areas Patricia Mining District Ontario*, Caitlin Jeffs, P.Geo. Fladgate Exploration Consulting Corporation, 12 Jun 2008, p14.

Table 8. Drill hole collar locations for the Dorothy Dobie Property from 2009 drill program

HOLE-ID	TARGET	LOCATIONX	LOCATIONY	LOCATIONZ	LENGTH	COLLAR_DIP	COLLAR_AZ	CLAIM
DOR-09-01	Dorothy Main Zone	617872	5698040	405	117.8	-45	215	3008435
DOR-09-02	Dorothy Main Zone	617872	5698040	405	150	-63	215	3008435
DOR-09-03	Dorothy Main Zone	617872	5698040	405	186	-75	215	3008435
DOR-09-04	Dorothy Main Zone	617736	5698142	406	108	-45	215	3008435
DOR-09-05	Dorothy Main Zone	617735	5698143	405	108	-70	215	3008435
DOR-09-06	Dorothy Main Zone	617717	5698164	405	144	-74	215	3008435
DOR-09-07	Dorothy Main Zone	617717	5698164	405	219	-85	215	3008435
DOB-09-08	Dobie Zone	623344	5694136	391	111	-45	205	4207745
DOB-09-09	Dobie Zone	623344	5694136	391	120	-65	205	4207745
DOB-09-10	Dobie Zone	623253	5694240	391	147	-45	205	4207745
DOB-09-11	Dobie Zone	623252	5694240	391	195	-60	205	4207745
DOB-09-12	Dobie Zone	623154	5694258	390	120	-45	205	4207745
DOB-09-13	Dobie Zone	623154	5694258	390	126	-60	205	4207745
DOB-09-14	Dobie Zone	623154	5694258	390	111	-70	205	4207745
DOB-09-15	Dobie Zone	623287	5694195	392	162	-45	205	4207745
DOB-09-16	Dobie Zone	623287	5694195	392	171	-65	205	4207745

Drilling information extracted from the Manicouagan Minerals Inc. *Work Report of 2011 Phase One and Two Diamond Drilling Programs Kasagiminnis Lake Project Pickle Lake Area, Ontario*, Bruce W. Mackie P.Geol., Bruce Mackie Geological Consulting Services, October 2011, page 23.

JORC Code, 2012 Edition – Table 1

Section 1 Sampling Techniques and Data for the Pickle Lake Gold Properties, including the Dorothy Main, Dobie Lake and Kasagiminnis Lake gold deposits.

(Criteria in this section apply to all succeeding sections.)

Criteria	JORC Code explanation	Commentary
<i>Sampling techniques</i>	<ul style="list-style-type: none"> • <i>Nature and quality of sampling (eg cut channels, random chips, or specific specialised industry standard measurement tools appropriate to the minerals under investigation, such as down hole gamma sondes, or handheld XRF instruments, etc). These examples should not be taken as limiting the broad meaning of sampling.</i> • <i>Include reference to measures taken to ensure sample representivity and the appropriate calibration of any measurement tools or systems used.</i> • <i>Aspects of the determination of mineralisation that are Material to the Public Report.</i> • <i>In cases where ‘industry standard’ work has been done this would be relatively simple (eg ‘reverse circulation drilling was used to obtain 1 m samples from which 3 kg was pulverised to produce a 30 g charge for fire assay’). In other cases more explanation may be required, such as where there is coarse gold that has inherent sampling problems. Unusual commodities or mineralisation types (eg submarine nodules) may warrant disclosure of detailed information.</i> 	<ul style="list-style-type: none"> • No sampling data or drilling activities were conducted or reported by Ardiden Ltd. • Ardiden is unable to verify the sampling techniques previously used on the Pickle Lake Gold Properties. • All reference to historical drilling results and the Dorothy Main, Dobie Lake and Kasagiminnis Lake gold deposits were sourced from publicly available documents and are to be considered from a historical point of view and not relied upon. • Ardiden views this historical data as a conceptual indication of the potential size and grade of the gold deposits in the area, and this data is relevant to ongoing exploration efforts. The reader is further cautioned that the information in this section is not necessarily indicative of the mineralization on the property that is the subject of this report. Sources included: <ul style="list-style-type: none"> ○ Technical Report on Three Gold Exploration Properties Pickle Lake Area, Ontario, Canada, for Manicouagan Minerals Inc, G.A. Harron, P.Eng., G.A. Harron & Associates Inc, October 13, 2009; ○ Manicouagan Minerals Inc. Work Report of 2009 Diamond Drilling Program Dorothy-Dobie Lake Project Pickle Lake Area, Ontario, Bruce W. Mackie P.Geo., Bruce Mackie Geological Consulting Services, 30 December 2009; ○ Manicouagan Minerals Inc. Work Report of 2011 Phase

Criteria	JORC Code explanation	Commentary
		<p>One and Two Diamond Drilling Programs Kasagiminnis Lake Project Pickle Lake Area, Ontario, Bruce W. Mackie P.Geo., Bruce Mackie Geological Consulting Services, October 2011;</p> <ul style="list-style-type: none"> ○ Blackburn, C.E., Hailstone, M.R., Parker, J. and Story, C.C., 1989, Kenora Resident Geologist's Report – 1988; p. 3-46 in Report of Activities 1988, Resident Geologists edited by K.G. Fenwick, P.E. Giblin and A.E. Pitts, Ont. Geol. Surtv, MP 142, 391 p; ○ Seim, G.W., 1993, Mineral Deposits of the Central Portion of the Uchi Subprovince, Vol. 1, Meen Lake to Kasagiminnis Lake Portion, Ont. Geol. Surv. OFR 5869, 390p; ○ the Trillium North Minerals Ltd. <i>Summer 2007 Dorothy Dobie Property Diamond Drill Program Dobie Lake, Meen Lake and Kawashe Lake Areas Patricia Mining District Ontario</i>, Caitlin Jeffs, P.Geo. Fladgate Exploration Consulting Corporation, 12 Jun 2008; and ○ White Metal Resources Corporate Presentation, January 2017.
Drilling techniques	<ul style="list-style-type: none"> • <i>Drill type (eg core, reverse circulation, open-hole hammer, rotary air blast, auger, Bangka, sonic, etc) and details (eg core diameter, triple or standard tube, depth of diamond tails, face-sampling bit or other type, whether core is oriented and if so, by what method, etc).</i> 	<ul style="list-style-type: none"> • No sampling data or drilling activities were conducted or reported by Ardiden Ltd. • Ardiden is unable to verify the drilling techniques used on Pickle Lake Gold Properties. All reference to historical diamond drilling results were sourced from publicly available documents and are to be considered from a historical point of view and not relied upon. • Ardiden views this historical data as a conceptual indication of the potential size and grade of the gold deposits in the area, and this data is relevant to ongoing exploration efforts. The reader is further cautioned that the information in this section is not necessarily indicative of the mineralization on the property that is the subject

Criteria	JORC Code explanation	Commentary
		<p>of this report. Sources included:</p> <ul style="list-style-type: none"> ○ Technical Report on Three Gold Exploration Properties Pickle Lake Area, Ontario, Canada, for Manicouagan Minerals Inc, G.A. Harron, P.Eng., G.A. Harron & Associates Inc, October 13, 2009; ○ Manicouagan Minerals Inc. Work Report of 2009 Diamond Drilling Program Dorothy-Dobie Lake Project Pickle Lake Area, Ontario, Bruce W. Mackie P.Geo., Bruce Mackie Geological Consulting Services, 30 December 2009; ○ Manicouagan Minerals Inc. Work Report of 2011 Phase One and Two Diamond Drilling Programs Kasagiminnis Lake Project Pickle Lake Area, Ontario, Bruce W. Mackie P.Geo., Bruce Mackie Geological Consulting Services, October 2011; ○ Blackburn, C.E., Hailstone, M.R., Parker, J. and Story, C.C., 1989, Kenora Resident Geologist's Report – 1988; p. 3-46 in Report of Activities 1988, Resident Geologists edited by K.G. Fenwick, P.E. Giblin and A.E. Pitts, Ont. Geol. Surv., MP 142, 391 p; ○ Seim, G.W., 1993, Mineral Deposits of the Central Portion of the Uchi Subprovince, Vol. 1, Meen Lake to Kasagiminnis Lake Portion, Ont. Geol. Surv. OFR 5869, 390p; ○ the Trillium North Minerals Ltd. <i>Summer 2007 Dorothy Dobie Property Diamond Drill Program Dobie Lake, Meen Lake and Kawashe Lake Areas Patricia Mining District Ontario</i>, Caitlin Jeffs, P.Geo. Fladgate Exploration Consulting Corporation, 12 Jun 2008; and ○ White Metal Resources Corporate Presentation, January 2017.

Criteria	JORC Code explanation	Commentary
<i>Drill sample recovery</i>	<ul style="list-style-type: none"> • <i>Method of recording and assessing core and chip sample recoveries and results assessed.</i> • <i>Measures taken to maximise sample recovery and ensure representative nature of the samples.</i> • <i>Whether a relationship exists between sample recovery and grade and whether sample bias may have occurred due to preferential loss/gain of fine/coarse material.</i> 	<ul style="list-style-type: none"> • No sampling data or drilling activities were conducted or reported by Ardiden Ltd. • Ardiden is unable to verify the drilling sample techniques used on Pickle Lake Gold Properties. All reference to historical drilling results were sourced from publicly available documents and are to be considered from a historical point of view and not relied upon. • Ardiden views this historical data as a conceptual indication of the potential size and grade of the gold deposits in the area, and this data is relevant to ongoing exploration efforts. The reader is further cautioned that the information in this section is not necessarily indicative of the mineralization on the property that is the subject of this report. Sources included: <ul style="list-style-type: none"> ○ Technical Report on Three Gold Exploration Properties Pickle Lake Area, Ontario, Canada, for Manicouagan Minerals Inc, G.A. Harron, P.Eng., G.A. Harron & Associates Inc, October 13, 2009; ○ Manicouagan Minerals Inc. Work Report of 2009 Diamond Drilling Program Dorothy-Dobie Lake Project Pickle Lake Area, Ontario, Bruce W. Mackie P.Geo., Bruce Mackie Geological Consulting Services, 30 December 2009; ○ Manicouagan Minerals Inc. Work Report of 2011 Phase One and Two Diamond Drilling Programs Kasagiminnis Lake Project Pickle Lake Area, Ontario, Bruce W. Mackie P.Geo., Bruce Mackie Geological Consulting Services, October 2011; ○ Blackburn, C.E., Hailstone, M.R., Parker, J. and Story, C.C., 1989, Kenora Resident Geologist's Report – 1988; p. 3-46 in Report of Activities 1988, Resident Geologists edited by K.G. Fenwick, P.E. Giblin and A.E. Pitts, Ont. Geol. Surtv, MP 142, 391 p;

Criteria	JORC Code explanation	Commentary
		<ul style="list-style-type: none"> ○ Seim, G.W., 1993, Mineral Deposits of the Central Portion of the Uchi Subprovince, Vol. 1, Meen Lake to Kasagiminnis Lake Portion, Ont. Geol. Surv. OFR 5869, 390p; ○ the Trillium North Minerals Ltd. <i>Summer 2007 Dorothy Dobie Property Diamond Drill Program Dobie Lake, Meen Lake and Kawashe Lake Areas Patricia Mining District Ontario</i>, Caitlin Jeffs, P.Geo. Fladgate Exploration Consulting Corporation, 12 Jun 2008; and ○ White Metal Resources Corporate Presentation, January 2017.
Logging	<ul style="list-style-type: none"> • <i>Whether core and chip samples have been geologically and geotechnically logged to a level of detail to support appropriate Mineral Resource estimation, mining studies and metallurgical studies.</i> • <i>Whether logging is qualitative or quantitative in nature. Core (or costean, channel, etc) photography.</i> • <i>The total length and percentage of the relevant intersections logged.</i> 	<ul style="list-style-type: none"> • No sampling was undertaken or reported by Ardiden Ltd. • Ardiden is unable to verify the drill core logging completed on Pickle Lake Gold Properties. • All reference to historical drilling results were sourced from publicly available documents and are to be considered from a historical point of view and not relied upon. • Ardiden views this historical data as a conceptual indication of the potential size and grade of the gold deposits in the area, and this data is relevant to ongoing exploration efforts. The reader is further cautioned that the information in this section is not necessarily indicative of the mineralization on the property that is the subject of this report.
Sub-sampling techniques and sample preparation	<ul style="list-style-type: none"> • <i>If core, whether cut or sawn and whether quarter, half or all core taken.</i> • <i>If non-core, whether riffled, tube sampled, rotary split, etc and whether sampled wet or dry.</i> • <i>For all sample types, the nature, quality and appropriateness of the sample preparation technique.</i> • <i>Quality control procedures adopted for all sub-sampling stages to maximise representivity of samples.</i> 	<ul style="list-style-type: none"> • No sub-sampling or drilling was undertaken by Ardiden Ltd. • Ardiden is unable to verify the sampling techniques used on Pickle Lake Gold Properties. • All reference to historical drilling results were sourced from publicly available documents and are to be considered from a historical point of view and not relied upon. • Ardiden views this historical data as a conceptual indication of the

Criteria	JORC Code explanation	Commentary
	<ul style="list-style-type: none"> Measures taken to ensure that the sampling is representative of the in situ material collected, including for instance results for field duplicate/second-half sampling. Whether sample sizes are appropriate to the grain size of the material being sampled. 	<p>potential size and grade of the gold deposits in the area, and this data is relevant to ongoing exploration efforts. The reader is further cautioned that the information in this section is not necessarily indicative of the mineralization on the property that is the subject of this report.</p>
Quality of assay data and laboratory tests	<ul style="list-style-type: none"> The nature, quality and appropriateness of the assaying and laboratory procedures used and whether the technique is considered partial or total. For geophysical tools, spectrometers, handheld XRF instruments, etc, the parameters used in determining the analysis including instrument make and model, reading times, calibrations factors applied and their derivation, etc. Nature of quality control procedures adopted (eg standards, blanks, duplicates, external laboratory checks) and whether acceptable levels of accuracy (i.e. lack of bias) and precision have been established. 	<ul style="list-style-type: none"> No assay tests were commissioned by Ardiden Ltd. Ardiden is unable to verify the assay techniques used on Pickle Lake Gold Properties. All assay results reported are historical and were sourced from publicly available documents and are to be considered from a historical point of view and not relied upon. Ardiden views this historical data as a conceptual indication of the potential size and grade of the gold deposits in the area, and this data is relevant to ongoing exploration efforts. The reader is further cautioned that the information in this section is not necessarily indicative of the mineralization on the property that is the subject of this report
verification of sampling and assaying	<ul style="list-style-type: none"> The verification of significant intersections by either independent or alternative company personnel. The use of twinned holes. Documentation of primary data, data entry procedures, data verification, data storage (physical and electronic) protocols. Discuss any adjustment to assay data. 	<ul style="list-style-type: none"> No assay tests were commissioned by Ardiden Ltd. Ardiden is unable to verify the assay techniques used on Pickle Lake Gold Properties. All assay results reported are historical and were sourced from publicly available documents and are to be considered from a historical point of view and not relied upon. Ardiden views this historical data as a conceptual indication of the potential size and grade of the gold deposits in the area, and this data is relevant to ongoing exploration efforts. The reader is further cautioned that the information in this section is not necessarily indicative of the mineralization on the property that is the subject of this report.

Criteria	JORC Code explanation	Commentary
<i>Location of data points</i>	<ul style="list-style-type: none"> • <i>Accuracy and quality of surveys used to locate drill holes (collar and down-hole surveys), trenches, mine workings and other locations used in Mineral Resource estimation.</i> • <i>Specification of the grid system used.</i> • <i>Quality and adequacy of topographic control.</i> 	<ul style="list-style-type: none"> • No sampling or drilling data is reported by Ardiden Ltd. • Ardiden is unable to verify the location of the data points used on Pickle Lake Gold Properties. • All drill locations reported are historical and were sourced from publicly available documents and are to be considered from a historical point of view and not relied upon. • Ardiden views this historical data as a conceptual indication of the potential size and grade of the gold deposits in the area, and this data is relevant to ongoing exploration efforts. The reader is further cautioned that the information in this section is not necessarily indicative of the mineralization on the property that is the subject of this report. • Drill hole locations are identified in Tables 6, 7 and 8. Diagrams
<i>Data spacing and distribution</i>	<ul style="list-style-type: none"> • <i>Data spacing for reporting of Exploration Results.</i> • <i>Whether the data spacing and distribution is sufficient to establish the degree of geological and grade continuity appropriate for the Mineral Resource and Ore Reserve estimation procedure(s) and classifications applied.</i> • <i>Whether sample compositing has been applied.</i> 	<ul style="list-style-type: none"> • No sampling or drilling activities were undertaken or reported by Ardiden Ltd. • Ardiden is unable to verify the spacing and distribution of the data points used on Pickle Lake Gold Properties. • All drill data reported are historical and were sourced from publicly available documents and are to be considered from a historical point of view and not relied upon. • Ardiden views this historical data as a conceptual indication of the potential size and grade of the gold deposits in the area, and this data is relevant to ongoing exploration efforts. The reader is further cautioned that the information in this section is not necessarily indicative of the mineralization on the property that is the subject of this report.
<i>Orientation of data in relation to</i>	<ul style="list-style-type: none"> • <i>Whether the orientation of sampling achieves unbiased sampling of possible structures and the extent to which this is known, considering the deposit type.</i> • <i>If the relationship between the drilling orientation and the orientation</i> 	<ul style="list-style-type: none"> • No sampling or drilling activities were undertaken or reported by Ardiden Ltd. • Ardiden is unable to verify the orientation of the data in relation to the geology on Pickle Lake Gold Properties.

Criteria	JORC Code explanation	Commentary
<i>geological structure</i>	<i>of key mineralised structures is considered to have introduced a sampling bias, this should be assessed and reported if material.</i>	<ul style="list-style-type: none"> All drill data reported are historical and were sourced from publicly available documents and are to be considered from a historical point of view and not relied upon. Ardiden views this historical data as a conceptual indication of the potential size and grade of the gold deposits in the area, and this data is relevant to ongoing exploration efforts. The reader is further cautioned that the information in this section is not necessarily indicative of the mineralization on the property that is the subject of this report.
<i>Sample security</i>	<ul style="list-style-type: none"> <i>The measures taken to ensure sample security.</i> 	<ul style="list-style-type: none"> No sampling or drilling activities were undertaken or reported by Ardiden Ltd.
<i>Audits or reviews</i>	<ul style="list-style-type: none"> <i>The results of any audits or reviews of sampling techniques and data.</i> 	<ul style="list-style-type: none"> No sampling or drilling data is reported by Ardiden Ltd. During the due diligence period Ardiden will review all available geological and metallurgical data associated with the Pickle Lake Gold Properties

Section 2 Reporting of Exploration Results

(Criteria listed in the preceding section also apply to this section.)

Criteria	JORC Code explanation	Commentary
<i>Mineral tenement and land tenure status</i>	<ul style="list-style-type: none"> <i>Type, reference name/number, location and ownership including agreements or material issues with third parties such as joint ventures, partnerships, overriding royalties, native title interests, historical sites, wilderness or national park and environmental settings.</i> <i>The security of the tenure held at the time of reporting along with any known impediments to obtaining a license to operate in the area.</i> 	<ul style="list-style-type: none"> All claims are in good standing and are 100% owned by White Metal Resources Corp. with Ken Kukkee and Murchison Minerals Ltd the vendors of the property. An Exploration permit for trenching and diamond has been issued by MNDM (the Canadian government agency).

Criteria	JORC Code explanation	Commentary
Exploration done by other parties	<ul style="list-style-type: none"> Acknowledgment and appraisal of exploration by other parties. 	<ul style="list-style-type: none"> No sampling or drilling activities were undertaken or reported by Ardiden Ltd. The Due Diligence is currently underway to review the data available. Ardiden is unable to verify the exploration activities completed by other parties on Pickle Lake Gold Properties. All reference to historical drilling and exploration results were sourced from publicly available documents and are to be considered from a historical point of view and not relied upon. Ardiden views this historical data as a conceptual indication of the potential size and grade of the gold deposits in the area, and this data is relevant to ongoing exploration efforts. The reader is further cautioned that the information in this section is not necessarily indicative of the mineralization on the property that is the subject of this report. Public sources outlined extensive exploration activities on the Pickle Lake Gold Properties and sources included: <ul style="list-style-type: none"> Technical Report on Three Gold Exploration Properties Pickle Lake Area, Ontario, Canada, for Manicouagan Minerals Inc, G.A. Harron, P.Eng., G.A. Harron & Associates Inc, October 13, 2009; Manicouagan Minerals Inc. Work Report of 2009 Diamond Drilling Program Dorothy-Dobie Lake Project Pickle Lake Area, Ontario, Bruce W. Mackie P.Geo., Bruce Mackie Geological Consulting Services, 30 December 2009; Manicouagan Minerals Inc. Work Report of 2011 Phase One and Two Diamond Drilling Programs Kasagiminnis Lake Project Pickle Lake Area, Ontario, Bruce W. Mackie P.Geo., Bruce Mackie Geological Consulting Services, October 2011; Blackburn, C.E., Hailstone, M.R., Parker, J. and Story,

Criteria	JORC Code explanation	Commentary
		<p>C.C., 1989, Kenora Resident Geologist's Report – 1988; p. 3-46 in Report of Activities 1988, Resident Geologists edited by K.G. Fenwick, P.E. Giblin and A.E. Pitts, Ont. Geol. Surtv, MP 142, 391 p;</p> <ul style="list-style-type: none"> ○ Seim, G.W., 1993, Mineral Deposits of the Central Portion of the Uchi Subprovince, Vol. 1, Meen Lake to Kasagiminnis Lake Portion, Ont. Geol. Surv. OFR 5869, 390p; ○ the Trillium North Minerals Ltd. <i>Summer 2007 Dorothy Dobie Property Diamond Drill Program Dobie Lake, Meen Lake and Kawashe Lake Areas Patricia Mining District Ontario</i>, Caitlin Jeffs, P.Geo. Fladgate Exploration Consulting Corporation, 12 Jun 2008; and ○ White Metal Resources Corporate Presentation, January 2017.
Geology	<ul style="list-style-type: none"> • <i>Deposit type, geological setting and style of mineralisation.</i> 	<ul style="list-style-type: none"> • The Pickle Lake Property is located within the Uchi Subprovince of the Canadian Shield. • The Pickle Lake greenstone belt comprises a 25km wide and 70km long belt of Archean supracrustal rocks and internal granitoid plutons surrounded by large granitoid batholiths (Fig. 2). The supracrustal rocks have been metamorphosed to greenschist facies with amphibolite facies occurring within the narrow (<1 km wide) thermal aureoles of younger plutonic bodies • Up to three phases of deformation, variably developed, are recognized in the Pickle Lake Belt • Gold mineralisation is generally structurally hosted, within north-east trending fabrics within mafic and intermediate units. A Banded Iron Formation forms a suitable marker horizon for targeted exploration

Criteria	JORC Code explanation	Commentary
<i>Drill hole Information</i>	<ul style="list-style-type: none"> • <i>A summary of all information material to the understanding of the exploration results including a tabulation of the following information for all Material drill holes:</i> <ul style="list-style-type: none"> ○ <i>easting and northing of the drill hole collar</i> ○ <i>elevation or RL (Reduced Level – elevation above sea level in metres) of the drill hole collar</i> ○ <i>dip and azimuth of the hole</i> ○ <i>down hole length and interception depth</i> ○ <i>hole length.</i> • <i>If the exclusion of this information is justified on the basis that the information is not Material and this exclusion does not detract from the understanding of the report, the Competent Person should clearly explain why this is the case.</i> 	<ul style="list-style-type: none"> • No sampling data or drilling activities were conducted or reported by Ardiden Ltd. • Ardiden is unable to verify the drilling sample techniques used on Pickle Lake Gold Properties. All reference to historical drilling results were sourced from publicly available documents and are to be considered from a historical point of view and not relied upon. • Ardiden views this historical data as a conceptual indication of the potential size and grade of the gold deposits in the area, and this data is relevant to ongoing exploration efforts. The reader is further cautioned that the information in this section is not necessarily indicative of the mineralization on the property that is the subject of this report. • Drill hole locations for key results are found in the Tables 6, 7 and 8. • Drill holes plans and additional information of historical results for the Pickle Lake Gold Properties are found in Figures 5 – 7, 10 -15 and 17. • Cross and Long section of the various gold mineralisation zones in Pickle Lake Gold Properties are in Figures 6 – 7, 10, 12 and 15.
<i>Data aggregation methods</i>	<ul style="list-style-type: none"> • <i>In reporting Exploration Results, weighting averaging techniques, maximum and/or minimum grade truncations (eg cutting of high grades) and cut-off grades are usually Material and should be stated.</i> • <i>Where aggregate intercepts incorporate short lengths of high grade results and longer lengths of low grade results, the procedure used for such aggregation should be stated and some typical examples of such aggregations should be shown in detail.</i> • <i>The assumptions used for any reporting of metal equivalent values should be clearly stated.</i> 	<ul style="list-style-type: none"> • No sampling data or drilling activities were conducted or reported by Ardiden Ltd. • Ardiden is unable to verify the data aggregation methods used on Pickle Lake Gold Properties. All reference to historical drilling results were sourced from publicly available documents and are to be considered from a historical point of view and not relied upon. • Ardiden views this historical data as a conceptual indication of the potential size and grade of the gold deposits in the area, and this data is relevant to ongoing exploration efforts. The reader is further cautioned that the information in this section is not necessarily indicative of the mineralization on the property that is the subject of this report.

Criteria	JORC Code explanation	Commentary
<i>relationship between mineralisation widths and intercept lengths</i>	<ul style="list-style-type: none"> • <i>These relationships are particularly important in the reporting of Exploration Results.</i> • <i>If the geometry of the mineralisation with respect to the drill hole angle is known, its nature should be reported.</i> • <i>If it is not known and only the down hole lengths are reported, there should be a clear statement to this effect (eg 'down hole length, true width not known').</i> 	<ul style="list-style-type: none"> • No sampling or drilling activities were undertaken or reported by Ardiden Ltd. • Ardiden is unable to confirm relationship between mineralisation widths and intercept lengths in the reported data on Pickle Lake Gold Properties. There is currently insufficient data to confirm the down lengths or true width of the mineralisation zones. There are representations in some of the cross sections, but this data or interpretation can't be verified, thus it is not known. • All reference to historical drilling results were sourced from publicly available documents and are to be considered from a historical point of view and not relied upon. • Ardiden views this historical data as a conceptual indication of the potential size and grade of the gold deposits in the area, and this data is relevant to ongoing exploration efforts. The reader is further cautioned that the information in this section is not necessarily indicative of the mineralization on the property that is the subject of this report.
<i>diagrams</i>	<ul style="list-style-type: none"> • <i>Appropriate maps and sections (with scales) and tabulations of intercepts should be included for any significant discovery being reported. These should include, but not be limited to a plan view of drill hole collar locations and appropriate sectional views.</i> 	<ul style="list-style-type: none"> • Drill holes plans and additional information of historical results for the Pickle Lake Gold Properties are found in Figures 5 – 7, 10 -15 and 17. • Cross and Long section of the various gold mineralisation zones in Pickle Lake Gold Properties are in Figures 6 – 7, 10, 12 and 15. • Drill hole locations for key results are found in the Tables 6, 7 and 8.
<i>Balanced reporting</i>	<ul style="list-style-type: none"> • <i>Where comprehensive reporting of all Exploration Results is not practicable, representative reporting of both low and high grades and/or widths should be practiced to avoid misleading reporting of Exploration Results.</i> 	<ul style="list-style-type: none"> • No exploration data is reported by Ardiden Ltd. • All reference to historical drilling results were sourced from publicly available documents and are to be considered from a historical point of view and not relied upon.
<i>Other substantive</i>	<ul style="list-style-type: none"> • <i>Other exploration data, if meaningful and material, should be reported including (but not limited to): geological observations; geophysical</i> 	<ul style="list-style-type: none"> • No exploration data was created by Ardiden Ltd. • All reference to historical drilling results were sourced from publicly

Criteria	JORC Code explanation	Commentary
exploration data	survey results; geochemical survey results; bulk samples – size and method of treatment; metallurgical test results; bulk density, groundwater, geotechnical and rock characteristics; potential deleterious or contaminating substances.	<p>available documents and are to be considered from a historical point of view and not relied upon.</p> <ul style="list-style-type: none"> • Ardiden views this historical data as a conceptual indication of the potential size and grade of the gold deposits in the area, and this data is relevant to ongoing exploration efforts. The reader is further cautioned that the information in this section is not necessarily indicative of the mineralization on the property that is the subject of this report. Sources included: <ul style="list-style-type: none"> ○ Technical Report on Three Gold Exploration Properties Pickle Lake Area, Ontario, Canada, for Manicouagan Minerals Inc, G.A. Harron, P.Eng., G.A. Harron & Associates Inc, October 13, 2009; ○ Manicouagan Minerals Inc. Work Report of 2009 Diamond Drilling Program Dorothy-Dobie Lake Project Pickle Lake Area, Ontario, Bruce W. Mackie P.Geo., Bruce Mackie Geological Consulting Services, 30 December 2009; ○ Manicouagan Minerals Inc. Work Report of 2011 Phase One and Two Diamond Drilling Programs Kasagiminnis Lake Project Pickle Lake Area, Ontario, Bruce W. Mackie P.Geo., Bruce Mackie Geological Consulting Services, October 2011; ○ Blackburn, C.E., Hailstone, M.R., Parker, J. and Story, C.C., 1989, Kenora Resident Geologist's Report – 1988; p. 3-46 in Report of Activities 1988, Resident Geologists edited by K.G. Fenwick, P.E. Giblin and A.E. Pitts, Ont. Geol. Surv., MP 142, 391 p; ○ Seim, G.W., 1993, Mineral Deposits of the Central Portion of the Uchi Subprovince, Vol. 1, Meen Lake to Kasagiminnis Lake Portion, Ont. Geol. Surv. OFR 5869, 390p;

Criteria	JORC Code explanation	Commentary
		<ul style="list-style-type: none"> ○ the Trillium North Minerals Ltd. <i>Summer 2007 Dorothy Dobie Property Diamond Drill Program Dobie Lake, Meen Lake and Kawashe Lake Areas Patricia Mining District Ontario</i>, Caitlin Jeffs, P.Geo. Fladgate Exploration Consulting Corporation, 12 Jun 2008; and ○ White Metal Resources Corporate Presentation, January 2017.
<i>Further work</i>	<ul style="list-style-type: none"> • <i>The nature and scale of planned further work (eg tests for lateral extensions or depth extensions or large-scale step-out drilling).</i> • <i>Diagrams clearly highlighting the areas of possible extensions, including the main geological interpretations and future drilling areas, provided this information is not commercially sensitive.</i> 	<ul style="list-style-type: none"> • Ardiden plan to commence a desktop due diligence review of the Pickle Lake Gold Properties using public and private information sources. • Ardiden intend to develop an exploration strategy in the coming months, and will report this information publicly once the strategy has been finalised.