

12th December 2013

ABM Hits 3000 Ounce Target from Trial Mining

ABM Resources NL ("ABM" or "The Company") presents an update on the Trial Mining and Processing at the Old Pirate High-Grade Gold Project in the Northern Territory of Australia.

Stage 1 - Trial Processing Update:

- ~3017 ounces of gold produced includes:
 - 2817 ounces of gold sold achieving gross-proceeds of **\$3.85M** and
 - 200+ ounces of gold in hand / pending delivery to the Perth Mint and more gold accumulating daily.
- >1000 ounces of gold estimated in circuit still to be recovered.
- >9000 tonnes of material processed with up to 1000 tonnes of high-grade gold bearing material to be processed this week.
- 18.9g/t gold average plant feed (head grade) of assays received to date continues to exceed expectation. (1)
- 89% in-plant recovery (based on feed vs tail assays). (2)

1. Head grade average is based on sampling from feed conveyor up until end of night-shift 22/11/2013 with remaining assays pending.

2. In-plant recovery is weighted to tonnes and based on daily feed vs tail assays.

All numbers valid as of 10/12/2013.

Stage 1 - Trial Mining Update:

- Trial mining complete with 10,000 tonnes excavated from multiple zones.
- Dilution management and mining to geological contacts successful.
- Detailed mapping continues to reveal shallow plunging high-grade mineralised fold noses generating targets for near-surface extensional exploration work.
- Grade control data being compiled and resource update work commencing.

Darren Holden, Managing Director of ABM Resources said, "At the start of the trial mining process we aimed to produce 3000 ounces of gold and we are very pleased to have hit that important milestone. We have now exceeded our target gold production early and will continue to process up to a further 1000 tonnes of material over the next week. Additionally, we estimate to have in excess of 1000 ounces of gold in circuit which will be recovered at the end of the trial mining process. The grade of the plant feed has also exceeded expectations, compared to the overall resource model, and is primarily a function of strongly geological controlled mining and dilution management."

Trial Processing Update

To date greater than 9000 tonnes of the Stage 1 Trial Processing has been completed and ABM anticipates finalising processing over the coming week with up to a further 1000 tonnes to be processed.

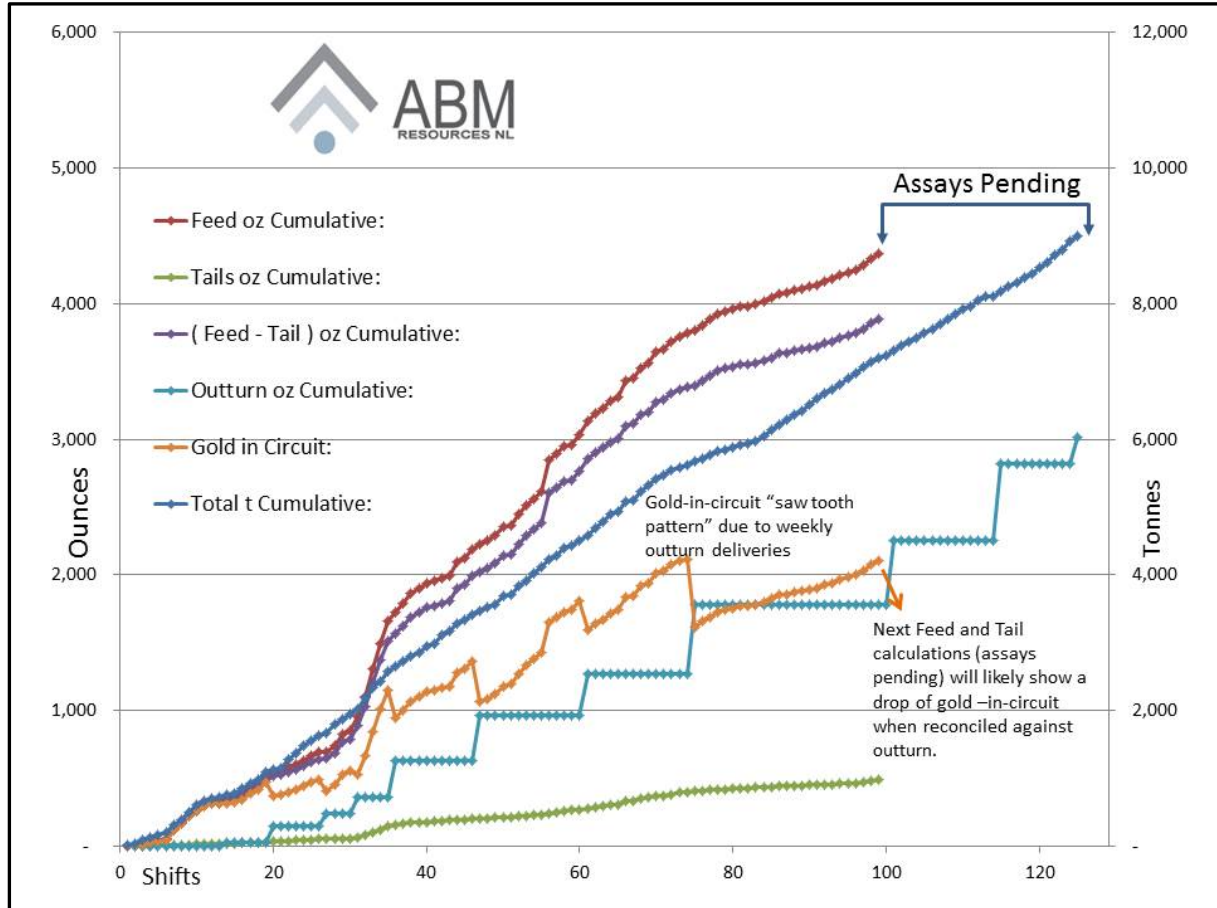


Chart 1. Cumulative production chart. Note, assays lag overall production rates by approximately 2 weeks.

Chart 1 Notes:

Total t cumulative is the processed tonnes through the plant.

Feed oz cumulative is a cumulative weighted total ounce input based on feed (head) grades (refer Appendix 1).

Tails Oz cumulative is the estimated gold content out to tails (refer Appendix 1).

Feed-Tail Oz cumulative is the feed grade minus the tail grade and represents the expected total in-plant recovery of ounces of gold.

Outturn Oz cumulative is the product outturn from the Perth Mint Refinery, other than the final step which represents estimated gold currently in hand. The stepwise (saw-tooth) nature relates to individual batches sent to the Perth Mint Refinery on a weekly basis. Further concentrate is produced daily.

Gold in Circuit is estimated by subtracting Outturn Oz from Feed-Tail Oz cumulative. The line shows generally a flattening out, however gold may continue to build in circuit during the full 10,000 tonnes of the trial.

Comparison to previous chart released 11/11/2013: The previous issued chart, as noted on 11/11/2013, had an estimate of feed and tails grades between shifts 35 and 65 as assays were still pending. The actual assay results, when received, were considerably higher than estimated and gold was also still building up in circuit as noted in the previous release. This increase in plant feed-grades was due to higher gold than predicted from Golden Hind sheared material, Old Pirate South and Old Pirate Central and also accounts for the increase in average feed grades from the previous announcement. The current chart 1 (displayed above) does not have any predicted estimates of grade for shifts where assays have not yet been received.

Recovered Gold, Head Grade versus Tail Grade and Gold-In-Circuit for In-Plant Recovery

The Company has been conducting regular gold shipments since early October. To date approximately 3000 ounces of gold have been recovered, with 2817 ounces sold for gross proceeds of \$3.85M with an estimated 200+ ounces currently secured on site.

The head grade and tail assaying lag production by approximately 2-3 weeks (due to sample shipment / laboratory sample turn-around times) but information received to date continues to show strong in-plant recoveries averaging 89% (refer appendix 1).

Processing work to date continues to indicate the overall high gravity recoverable gold projected for Stage 2 operations is achievable with low capital improvements to the current plant to improve grind and to capture more gold earlier in the plant circuit. This includes a plan to commission the gravity gold jig which has been installed but largely not used in the trial.

Gold lost to tails is principally less than 53 micron particles. ABM (via ALS Global) is currently conducting test work targeting improved recovery for sub 53 micron gold particles, using laboratory based falcon concentrator simulation. This work is being conducted on composite tails samples from the trial processing, and the Company expects to be able to provide an update on results early in the new-year.

Fraction analysis and fire assay of leach-well residues has revealed no recognisable refractory component of gold mineralisation and hence all gold is assumed as "free-gold".

It is important to note that ABM is utilising a small and fully lined tailings storage facility, and is also developing strategies to recover the gold on this tails storage during Stage 2.

As noted in the previous release and confirmed by an independent metallurgist, the gold in circuit is building-up, principally in the ball mill. This is considered standard in the early stages of gold processing, especially for material with a high free / gravity gold content for similar reasons that makes the project amenable to gravity recovery as the principal processing method. The build-up is currently estimated at greater than 1000 ounces. Following the completion of the Trial Processing, the ball mill will be stripped clean and final reconciliations will be possible. The current schedule is to complete processing by the 19/12/2013 and the plant clean-out will be conducted early in the new-year.

Trial Mining

The Company has completed trial mining of gold-bearing material from the numerous trial pits including Golden Hind, Old Pirate South, East-Side veins, SE Veins, Old Pirate Central / Eastern Limb and the Western Limb with the full 10,000 tonnes now extracted. In particular, and below the first metre, the geologists found it relatively straight-forward to follow geological boundaries and selectively mine the high-grade gold bearing veins and thus reduce the amount of country rock dilution. This dilution management is a key test of the trial mining phase with the aim to model if the Stage 2 mining can be performed at higher grade / less tonnes for similar net gold content than predicted by the resource modelling. These studies and modelling is part of on-going work.

The geological and grade control data are being compiled for a re-estimation of the overall resource. Of particular note is the recent confirmed presence of shallowly plunging high-grade folded and thickened veins. The existence of these folds was postulated in the previous geological interpretation and resource modelling but given their orientation did not naturally outcrop clearly. The fold hinges plunge shallower than expected at 18 to 22 degrees and the Company will factor this shallow plunge into the resource model. The shallow plunge also generates several shallow extensional drill targets which will be tested to potentially extend the system. Some examples of shallow plunging folds are shown in Figures 1 and 2.

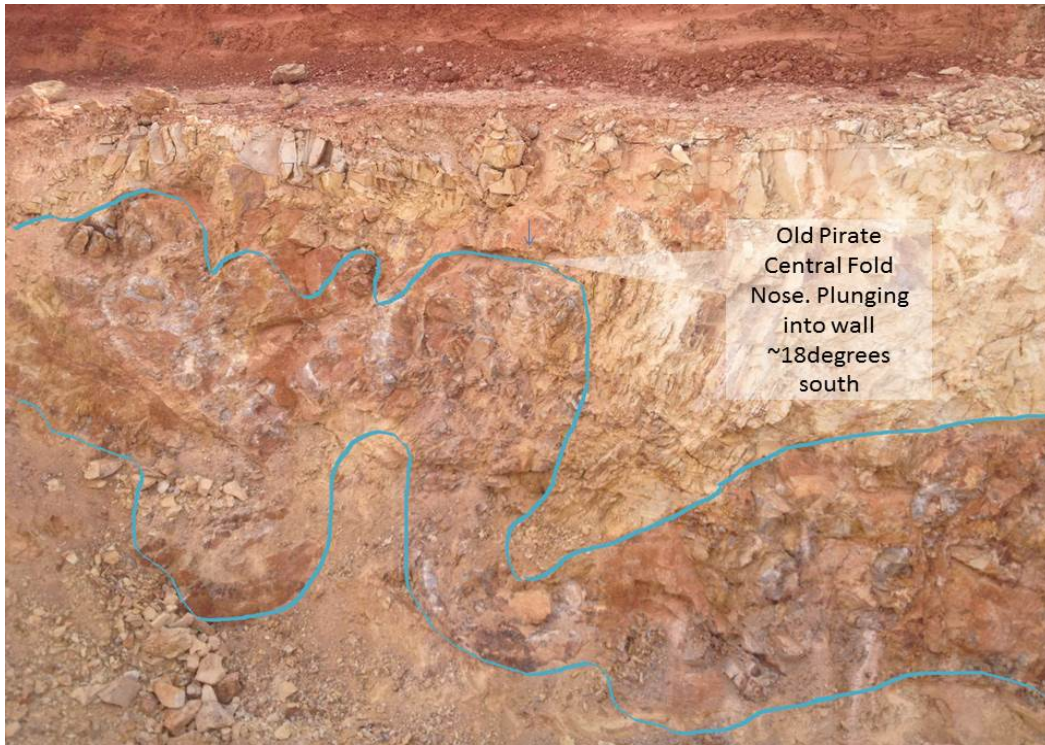


Figure 1. Photograph (view south) of pit wall at Old Pirate Central showing exposure of fold. The vein (blue highlighted area) is plunging at 18 to 20 degrees into the wall. Height of bench is approximately 3m.



Figure 2. Old Pirate South fold nose exposed in pit floor and walls. Photo taken view NNW with the fold plunging south into the floor at 18 to 20 degrees.

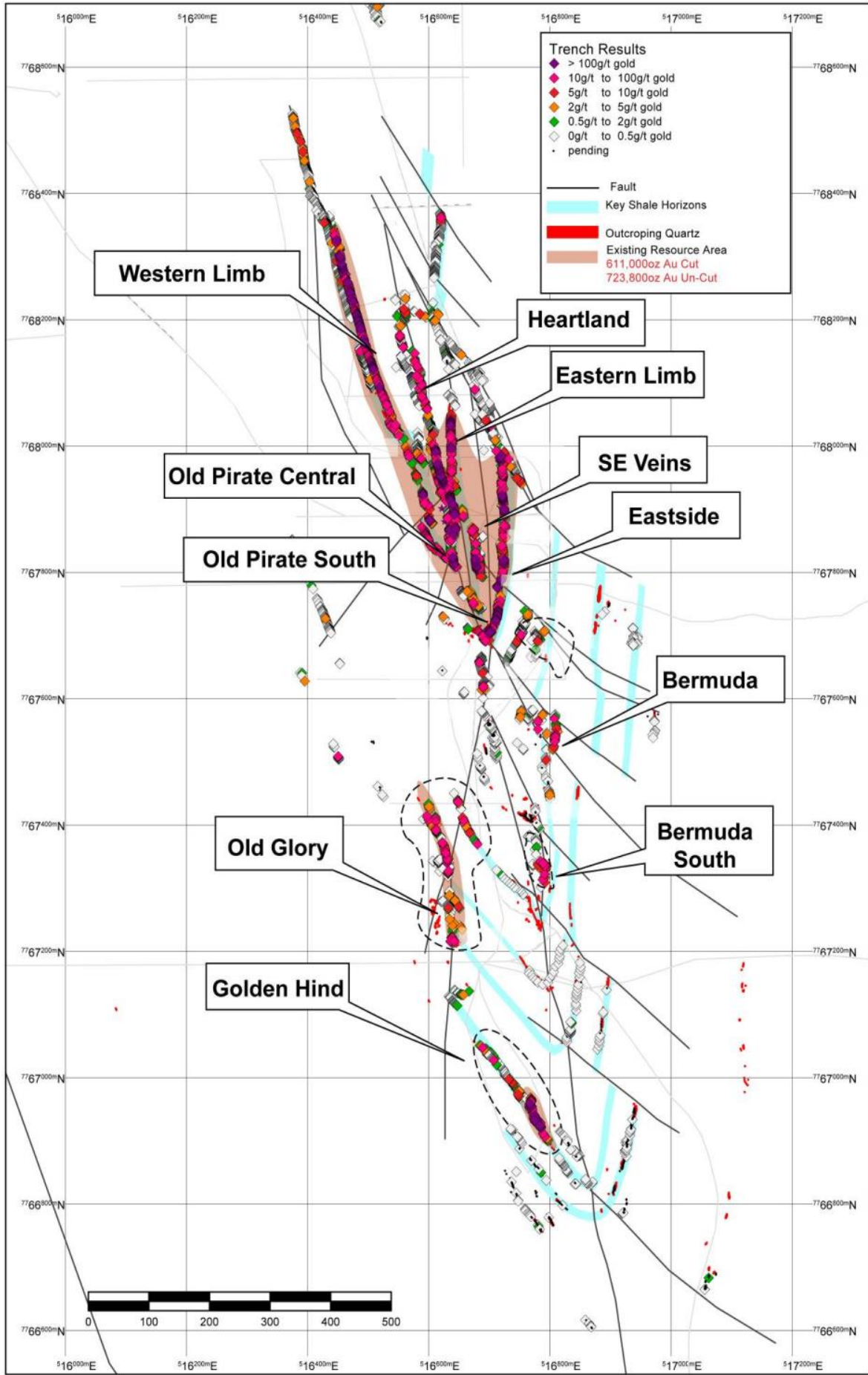


Figure 3. Old Pirate Trend Gold System.

About Old Pirate

The Old Pirate Trend consists of a series of gold-bearing quartz veins over a 1.8 kilometre strike length, consisting of 3 distinct vein clusters of mineralisation named Old Pirate, Old Glory and Golden Hind deposits. Gold mineralisation is hosted primarily within narrow quartz veins of between 20cm and 6m in width. Mineralised zones are up to 40m in width and consist of multiple veins hosted primarily within sedimentary shale horizons which are part of a turbidite sequence (interbedded sandstone and shales). Structurally the turbidite sequence has been folded into a faulted anticline.

The Old Pirate Gold Deposit has a total uncut mineral resource estimate of **1.88Mt averaging 11.96g/t gold for 723,800 ounces** (refer Appendix 2) and has a number of key advantages compared to other projects in Australia. Firstly, metallurgical test work indicates that up to 97.3% of gold can be recovered from low cost / low capital expenditure gravity processing methods (refer release dated 05/09/2012). Secondly, there is abundant high-grade gold observed in multiple quartz veins extending from surface to depths of greater than 200m. The project has a high coarse gold content (statistical nugget effect) resulting in a high variability of grade between samples. By trialling multiple techniques, the Company has established that the collection of larger sample sizes results in a generally higher grade assay. This sampling effect is typical in coarse gold systems where drilling generally under-calls the overall grade.

As a result, the Company is not undertaking the standard feasibility study process involving detailed desktop studies and drilling, but is instead conducting a staged approach to development where the Trial Mining (Bulk Sampling) forms a key part of determining the costs and feasibility of a full-scale mine, and allows for ongoing 'in-mine' exploration. The Trial Mining involved the installation of a gravity gold plant that will be used and expanded in the subsequent stages.

The staged process takes advantage of the low engineering risk at Old Pirate and allows the Company to keep up-front capital expenditure to a minimum. The objective is for each stage of development to be profitable with quick payback periods, and to provide the capital required for the subsequent stages from cash flow.

About ABM Resources

ABM is an exploration Company developing several gold discoveries in the Central Desert region of the Northern Territory of Australia. The Company has a multi-tiered approach to exploration and development with a combination of high-grade potentially short-term production scenarios such as the Old Pirate High-Grade Gold Project (currently undergoing Trial Mining), large scale discoveries such as Buccaneer, and regional exploration discoveries such as the Hyperion Gold Project. In addition, ABM is committed to regional exploration programs throughout its extensive holdings including the alliance with Independence Group NL at the regional Lake Mackay Project, and the recently announced and proposed divestment of the North Arunta Projects to Clancy Exploration Ltd.

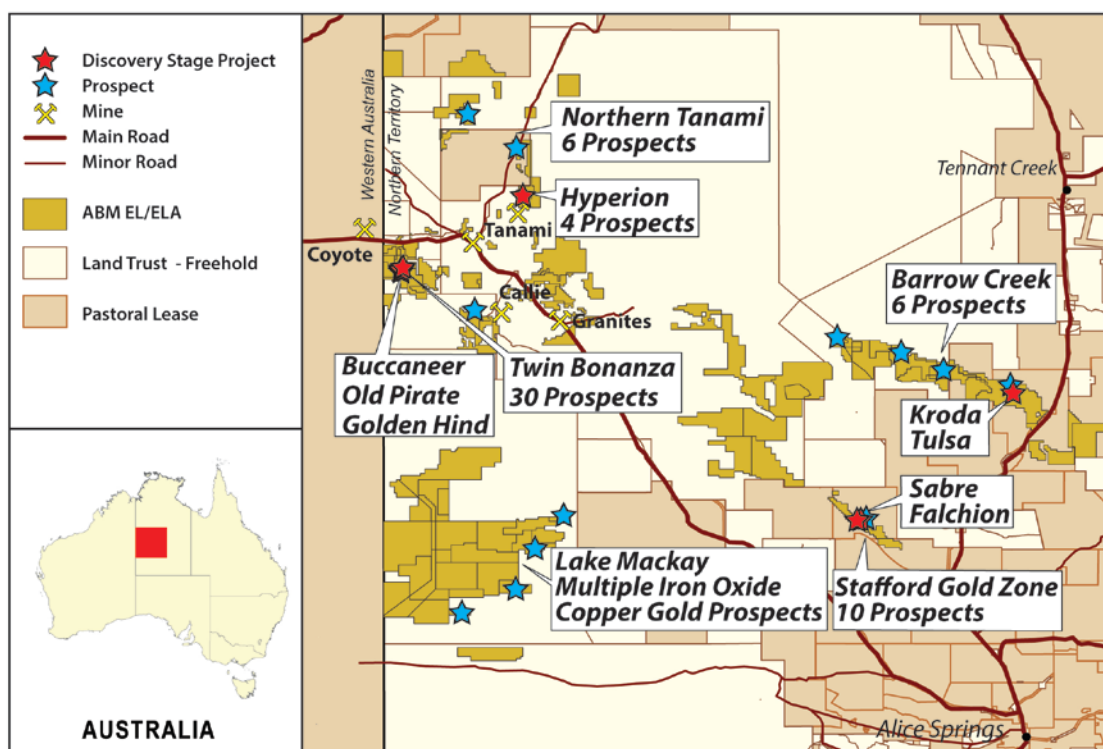


Figure 4. ABM Project Location Map in Northern Territory.

Signed

Darren Holden – Managing Director

Competent Persons Statement

The information in this report that relates to Exploration Results or Mineral Resources is based on information compiled by Mr Darren Holden who is a Member of The Australasian Institute of Mining and Metallurgy. Mr Holden is a full time employee of ABM Resources NL and has sufficient experience which is relevant to the style of mineralisation and type of deposit under consideration and to the activity which he is undertaking to qualify as a Competent Person as defined in the 2012 Edition of the "Australasian Code for Reporting Exploration Results, Mineral Resources and Ore Reserves". Mr Holden consents to the inclusion in the documents of the matters based on this information in the form and context in which it appears.

For Further Information Please Contact

Jutta Zimmermann
CFO / Company Secretary
+61 8 9423 9777

Darren Holden
Managing Director
+61 8 9423 9777

Berdine Mastaglia
Investor Relations Manager
+61 8 9423 9777

APPENDIX 1. Plant Feed and Tails Assay sampling method.

The plant feed samples are manually collected by scooping crushed material off the scrubber feed conveyor every hour. The Company expects these grades to be an indication only as the usual coarse gold effect (nugget effect) still applies at this stage. Samples are composited to one sample per shift. The samples are sent to ALS Global in Alice Springs for pulverising and then sent to ALS Global in Perth where they are assayed using both Fire Assay (AA26) and LeachWell (AA15) techniques.

The tails samples are collected with an automatic tails sampling device and composited for the shift. Samples are sent to ALS Global in Alice Springs where they are filter pressed to remove water content, and then sent to Perth for assay using both Fire Assay (AA26) and LeachWell (AA15) techniques.

Number of samples (Shifts) (up until 22/11/13 with remaining assays pending)	Head grade assay average weighted against tonnes per shift (g/t gold)	Tails grade assay average weighted against tonnes per shift (g/t gold)	In-plant gravity only recovery (weighted)
99	18.9	2.1	89%

APPENDIX 2. Old Pirate Resource Estimation

Old Pirate Trend Overall High-Grade Mineral Resource Estimation February 2013

Category	Tonnes	Gold Grade (g/t) (300g/t top-cut)	Gold Grade (g/t) (uncut)	Ounces Gold (300g/t top-cut)	Ounces Gold (uncut)
Indicated	889,000	8.19	8.93	234,100	255,300
Inferred	993,000	11.80	14.67	376,900	468,500
Total	1,882,000	10.10	11.96	611,000	723,800

Mineral Resources estimated at 1g/t cut-off except for the Central Zone estimated at a 3g/t cut-off. Totals may vary due to rounding. There is an additional 414,900 tonnes averaging 1.74g/t gold for 23,300 ounces of gold in low-grade Indicated Resource in the Central Zone (>1g/t, <3g/t cut-offs).

For further information refer to ASX release dated 04/02/2013.