

8th October 2013

Trial Mining and Processing Update at the Old Pirate High-Grade Gold Project

ABM Resources NL ("ABM" or "The Company") presents an update on the Trial Mining and Processing at the Old Pirate High-Grade Gold Project in the Northern Territory of Australia.

Key Points:

- First gold delivered to Perth Mint.
- Plant feed (head grades) generally exceeding expectation.
- Tails grades indicating high rates of recovery (>90%) in-plant from gravity processing.
- Gold still building up in circuit.
- Trial Mining continues with new gold bearing veins identified at the Western Limb.

In-Plant Recoveries and Reconciliation at the Pilot Processing Facility

The Company recently received the first batches of plant-feed and tails-assay grades, which indicate excellent in-plant recoveries of over 90%. The Company remains pleased with the performance of the Knelson Concentrator, extracting both coarse and fine gold. The assay results from the first thirteen days of processing are outlined in the table below. The first three days utilised known low-grade material as part of plant commissioning.

Table 1. Plant Feed Grade vs Tails Assay Grade (Refer Appendix 2 for details).

| Date | Plant Feed Grade (g/t Au) | Tails Assay Grade (g/t Au) | In-Plant Recovery (%) |
|--------------------------|------------------------------|-------------------------------|--------------------------|
| 07-Sep | 5.06 | 0.46 | 90.90% |
| 08-Sep | 4.59 | 0.39 | 91.49% |
| 11-Sep | 3.38 | 0.46 | 86.39% |
| 12-Sep | 22.97 | 0.68 | 97.04% |
| 13-Sep | 6.54 | 1.04 | 84.10% |
| 15-Sep | 6.52 | 0.76 | 88.42% |
| 16-Sep | 32.30 | 0.80 | 97.52% |
| 17-Sep | 18.88 | 0.75 | 96.05% |
| 19-Sep | 12.35 | 0.77 | 93.81% |
| 20-Sep | 20.65 | 0.63 | 96.95% |
| 21-Sep | 26.45 | 0.49 | 98.15% |
| 22-Sep | 21.83 | 1.11 | 94.91% |
| 23-Sep | 8.26 | 0.81 | 90.25% |
| Totals / Averages | 14.60 | 0.70 | 95.40% |

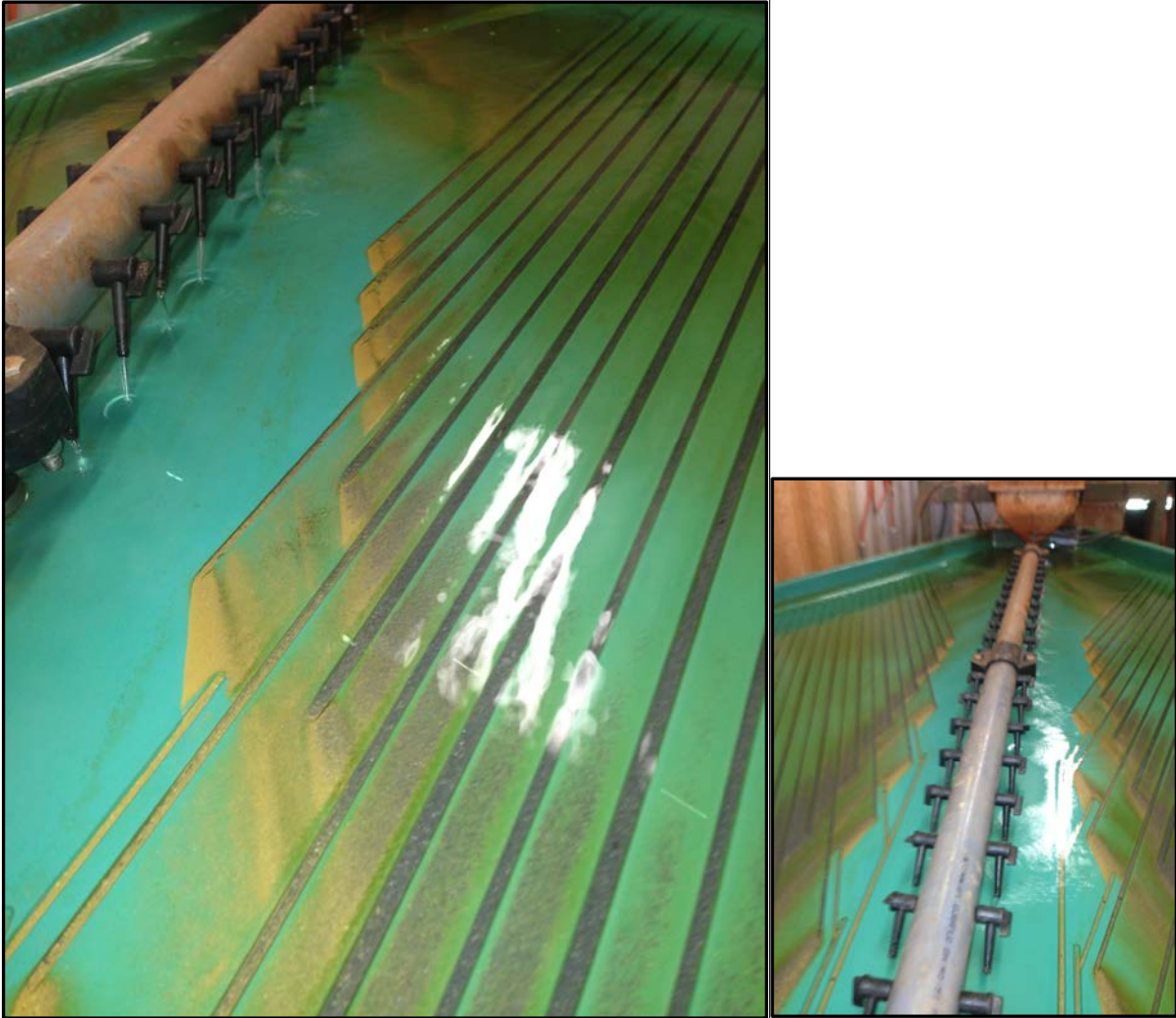


Figure 1. Gold on the Gemini Table from Western Limb and Old Pirate South processing.

An on-site review of the Pilot Processing Plant recently undertaken by independent consultant metallurgist Adrian Hall (Metallurgy Matters Pty Ltd), confirmed there is substantial build-up of gold-in-circuit (principally in the ball mill) which is considered normal in start-up. This gold will either make its way through the circuit in normal milling operations or will be recovered at the completion of the trial. This build-up phase makes reconciliation unreliable at this early stage of the process. However, the plant is a closed circuit (with exception of tails), and, as verified by the consultant metallurgist, as long as the tails assay grades remain low the Company can be confident of good metallurgical recoveries throughout the plant and ultimately in reconciliation.

Perth Mint Refinery Consignment and Concentrate Upgrading

Last week the Company transported a batch of 13kg of upgraded gold concentrate to the Perth Mint with further consignments expected this week.

As expected, the free-gold bearing concentrate coming off the Gemini Table also contains iron oxides (Figure 1). The concentrate requires a combination of simple magnetic separation, which removes much of the iron oxide, and hydrochloric acid (HCl) wash, prior to refining into gold bars. As part of the trial processing, a 3kg test parcel of gold concentrate was first sent to the Perth Mint Refinery for trials

on further concentrate upgrade methods prior to smelting. The Perth Mint Refinery successfully processed the gold from the concentrate using the methods noted above. The Company has also trialled acid wash successfully on site using dilute HCl and is also sourcing a small scale magnetic separator to further upgrade the concentrate on-site prior to smelting. The Perth Mint has agreed to take additional concentrate parcels (such as the 13kg parcel noted above) from the Company directly as part of the trial and the Company will receive full gold credits without penalty for this.



Figure 2. Some upgraded gold concentrate product (field of view ~20cm).

Throughput Rate

To date the Company has processed over 1500 tonnes of material. As part of the trial processing the Company has been experimenting with different configurations of pipes and pumps at the modular plant to balance water, recirculating load and slurry density and these tests ultimately impact on short-term throughput rates. In addition, a component failure in one of the crushing units (now rectified) resulted in reduced throughput for several days. The plant is now operating at nameplate operating capacity and processing between 100 and 150 tonnes per day (depending on maintenance and test schedules).

Trial Mining Continues

Trial Mining continues on the second bench of selected areas (refer to release dated 18/09/2013 for further details). Of particular geological note, the Company has for the first time started to see several quartz veins splaying off the footwall of the main vein on the Western Limb (Figure 3). At surface the Western Limb was observed as a relatively straight, single high-grade vein between 1m and 20cm wide. However, in drilling the Western Limb commonly has multiple veins within zones averaging 3 to 5 metres wide with a maximum of 15 metres. The second bench of excavation at the Western Limb has revealed several splay structures and stock-work veins footwall to the main vein. Assays for these zones are pending. Visible gold has been observed and is encouraging for greater width along parts of the Western Limb.

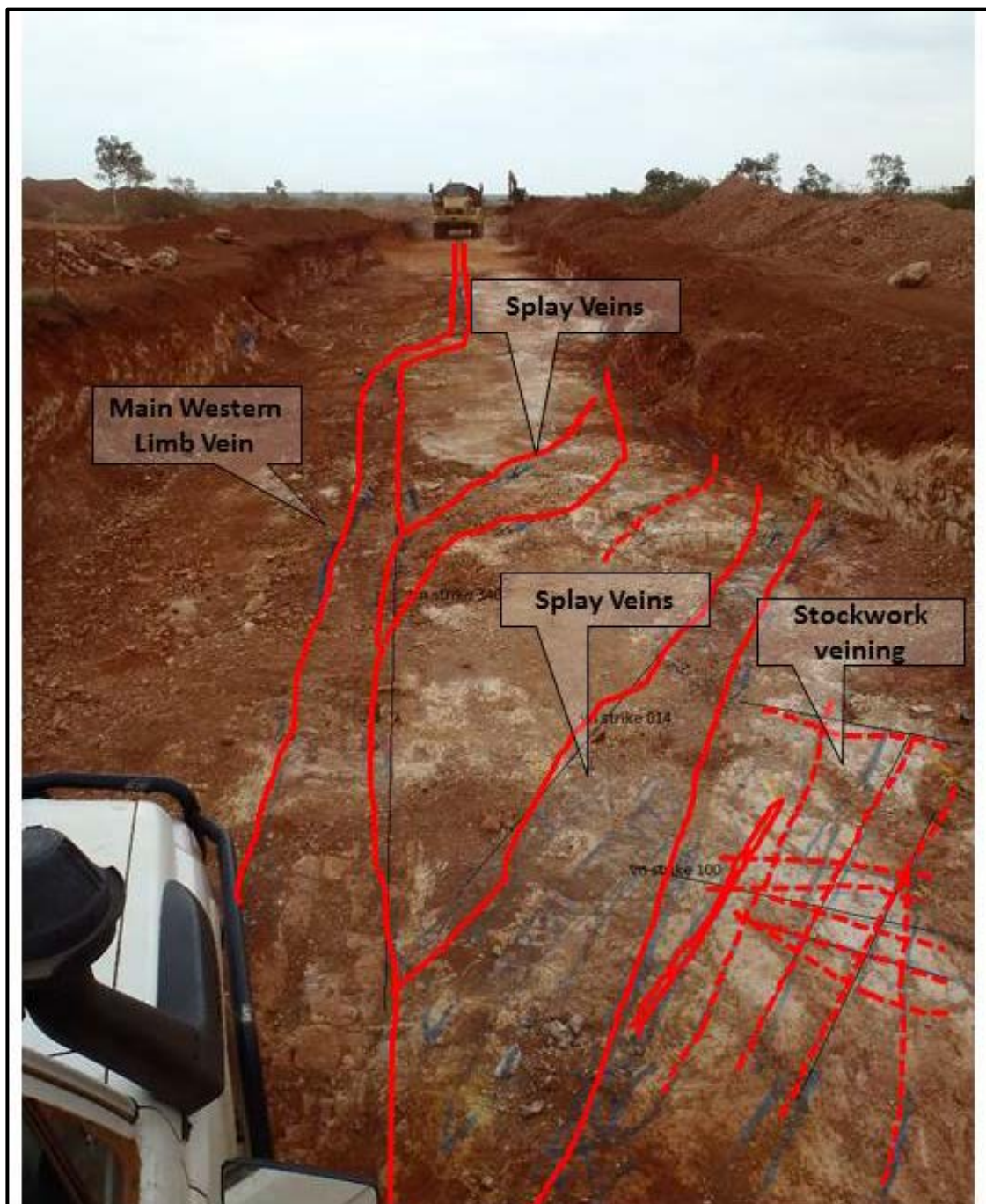


Figure 3. Western Limb splays increasing the mineralised zone width. View north.

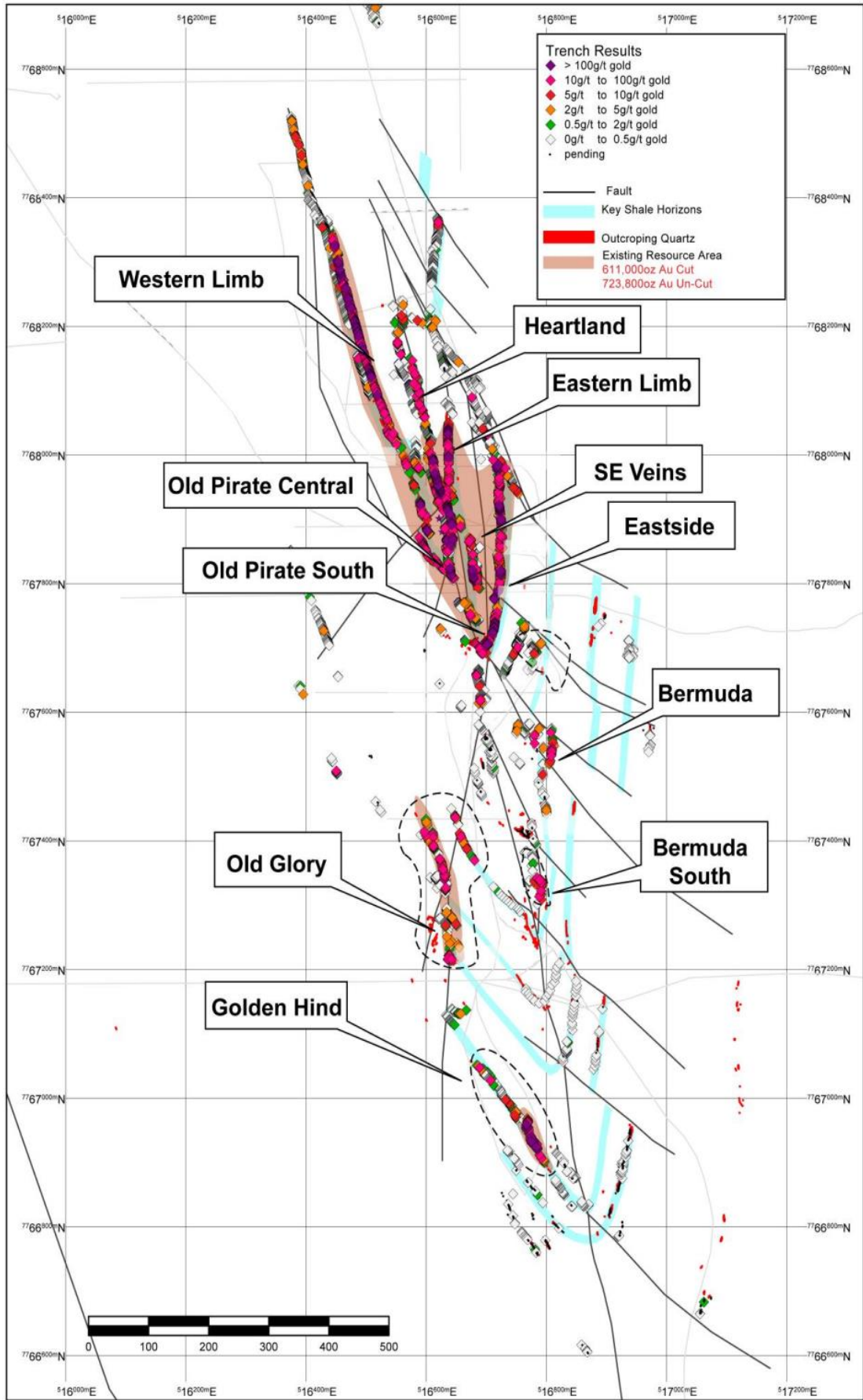


Figure 4. Old Pirate Trend Gold System.

About Old Pirate

The Old Pirate Trend consists of a series of gold-bearing quartz veins over a 1.8 kilometre strike length, consisting of 3 distinct vein clusters of mineralisation named Old Pirate, Old Glory and Golden Hind deposits. Gold mineralisation is hosted primarily within narrow quartz veins of between 20cm and 6m in width. Mineralised zones are up to 40m in width and consist of multiple veins hosted primarily within sedimentary shale horizons which are part of a turbidite sequence (interbedded sandstone and shales). Structurally the turbidite sequence has been folded into a faulted anticline.

The Old Pirate Gold Deposit has a total uncut mineral resource estimate of **1.88Mt averaging 11.96g/t gold for 723,800 ounces** (refer Appendix 1) and has a number of key advantages compared to other projects in Australia. Firstly, metallurgical test work indicates that up to 97.3% of gold can be recovered from low cost / low capital expenditure gravity processing methods (refer release dated 05/09/2012). Secondly, there is abundant high-grade gold observed in multiple quartz veins extending from surface to depths of greater than 200m. The project has a high coarse gold content (statistical nugget effect) resulting in a high variability of grade between samples. By trialling multiple techniques, the Company has established that the collection of larger sample sizes results in a generally higher grade assay. This sampling effect is typical in coarse gold systems where drilling generally under-calls the overall grade.

As a result, the Company is not undertaking the standard feasibility study process involving detailed desktop studies and drilling, but is instead conducting a staged approach to development where the Trial Mining (Bulk Sampling) forms a key part of determining the costs and feasibility of a full-scale mine, and allows for ongoing 'in-mine' exploration. The Trial Mining involves installation of a gravity gold plant that will be used and expanded in the subsequent stages.

The staged process takes advantage of the low engineering risk at Old Pirate and allows the Company to keep up-front capital expenditure to a minimum. The objective is for each stage of development to be profitable with quick payback periods, and to provide the capital required for the subsequent stages from cash flow.

About ABM Resources

ABM is an exploration Company developing several gold discoveries in the Central Desert region of the Northern Territory of Australia. The Company has a multi-tiered approach to exploration and development with a combination of high-grade potentially short-term production scenarios such as the Old Pirate High-Grade Gold Project (currently undergoing Trial Mining), large scale discoveries such as Buccaneer, and regional exploration discoveries such as the Kroda Gold Project. In addition, ABM is committed to regional exploration programs throughout its extensive holdings.

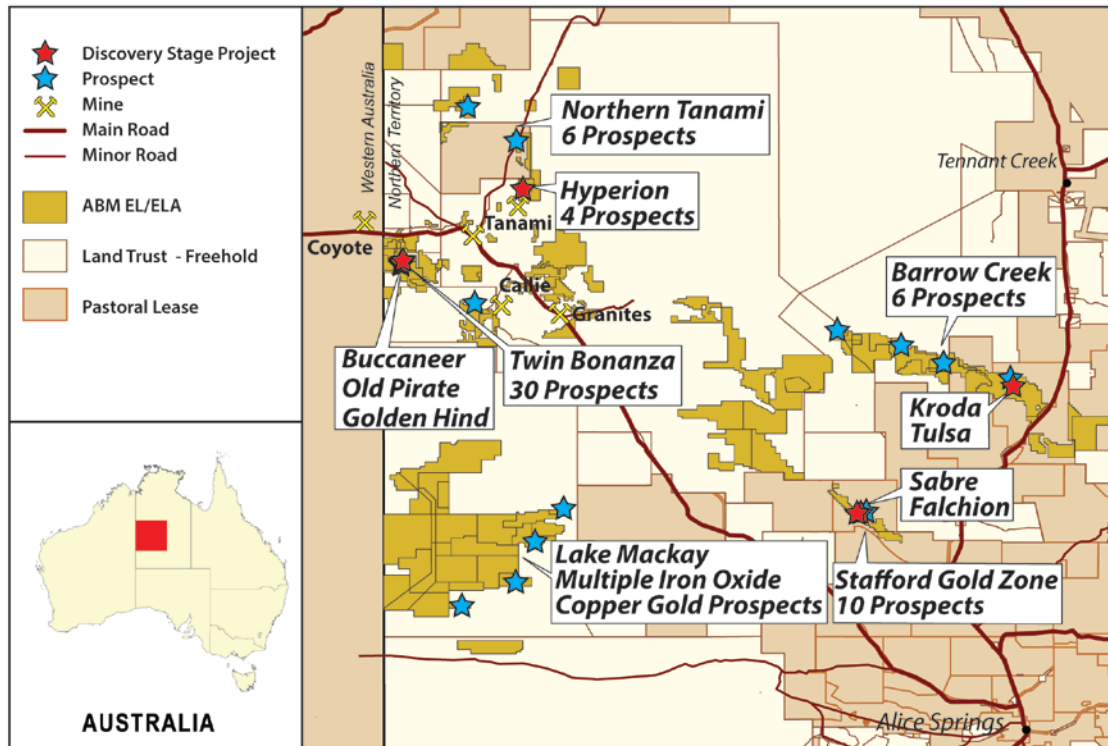


Figure 5. ABM Project Location Map in Northern Territory.

Signed

Darren Holden – Managing Director

Competent Persons Statement

The information in this report that relates to Exploration Results or Mineral Resources is based on information compiled by Mr Darren Holden who is a Member of The Australasian Institute of Mining and Metallurgy. Mr Holden is a full time employee of ABM Resources NL and has sufficient experience which is relevant to the style of mineralisation and type of deposit under consideration and to the activity which he is undertaking to qualify as a Competent Person as defined in the 2004 Edition of the "Australasian Code for Reporting Exploration Results, Mineral Resources and Ore Reserves". Mr Holden consents to the inclusion in the documents of the matters based on this information in the form and context in which it appears.

For Further Information Please Contact

Jutta Zimmermann
CFO / Company Secretary
+61 8 9423 9777

Darren Holden
Managing Director
+61 8 9423 9777

Berdine Mastaglia
Investor Relations Manager
+61 8 9423 9777

APPENDIX 1. Resource Estimations

1. Old Pirate Resources Estimations

Table 1.1 Old Pirate Trend Overall High-Grade Mineral Resource Estimation February 2013

| Category | Tonnes | Gold Grade (g/t) (300g/t top-cut) | Gold Grade (g/t) (uncut) | Ounces Gold (300g/t top-cut) | Ounces Gold (uncut) |
|--------------|------------------|--------------------------------------|-----------------------------|---------------------------------|------------------------|
| Indicated | 889,000 | 8.19 | 8.93 | 234,100 | 255,300 |
| Inferred | 993,000 | 11.80 | 14.67 | 376,900 | 468,500 |
| Total | 1,882,000 | 10.10 | 11.96 | 611,000 | 723,800 |

Mineral Resources estimated at 1g/t cut-off except for the Central Zone estimated at a 3g/t cut-off. Totals may vary due to rounding. There is an additional 414,900 tonnes averaging 1.74g/t gold for 23,300 ounces of gold in low-grade Indicated Resource in the Central Zone (>1g/t, <3g/t cut-offs).

For further information refer to ASX release dated 04/02/2013.

2. Buccaneer HGZ Resources Estimations

Table 2a. Combined Resource Estimation with no top-cut, using a 1g/t block model cut-off

| | Tonnes | Gold (g/t) | Ounces |
|--------------|-------------------|-------------|------------------|
| Indicated | 7,117,000 | 2.25 | 515,300 |
| Inferred | 8,183,000 | 2.78 | 732,200 |
| Total | 15,300,000 | 2.54 | 1,247,500 |

Table 2b. Combined Resource Estimation using a variable top-cut, and a 1g/t block model cut-off

| | Tonnes | Gold (g/t) | Ounces |
|--------------|-------------------|-------------|------------------|
| Indicated | 7,117,000 | 2.00 | 458,500 |
| Inferred | 8,183,000 | 2.43 | 639,700 |
| Total | 15,300,000 | 2.23 | 1,098,200 |

Table 2c. Combined Resource Estimation with no top-cut, using a 2g/t block model cut-off

| | Tonnes | Gold (g/t) | Ounces |
|--------------|------------------|-------------|----------------|
| Indicated | 2,261,000 | 4.17 | 303,000 |
| Inferred | 3,573,000 | 4.56 | 523,500 |
| Total | 5,834,000 | 4.41 | 826,500 |

Table 2d. Combined Resource Estimation using a variable top-cut, and a 2g/t block model cut-off

| | Tonnes | Gold (g/t) | Ounces |
|--------------|------------------|-------------|----------------|
| Indicated | 2,261,000 | 3.39 | 246,200 |
| Inferred | 3,573,000 | 3.75 | 431,100 |
| Total | 5,834,000 | 3.61 | 677,300 |

Note – totals may vary due to rounding

For further information refer to ASX release dated 05/02/2013.

3. Twin Bonanza Global Resource (Old Pirate and Buccaneer)

Table 3.1 Twin Bonanza Global Resource with Old Pirate at 1g/t cut-off & Buccaneer at 2.0g/t cut-off

| Project | Tonnes all categories | Grade (g/t Au) all categories | Ounces gold |
|------------------|--------------------------|----------------------------------|------------------|
| Old Pirate Trend | 1,882,000 | 10.1 | 611,000 |
| Buccaneer HGZ | 5,834,000 | 3.61 | 677,300 |
| Total | 7,716,000 | 5.19 | 1,288,300 |

Table 3.2 Twin Bonanza Global Resource with Old Pirate & Buccaneer at 1.0g/t cut-off

| Project | Tonnes all categories | Grade (g/t Au) all categories | Ounces gold |
|------------------|--------------------------|----------------------------------|------------------|
| Old Pirate Trend | 1,882,000 | 10.1 | 611,000 |
| Buccaneer HGZ | 15,300,000 | 2.23 | 1,098,200 |
| Total | 17,182,000 | 3.10 | 1,709,200 |

Note – totals may vary due to rounding

For further information refer to ASX release dated 05/02/2013.

APPENDIX 2. Plant Feed and Tails Assay results

The Plant Feed samples are manually collected by scooping crushed material off the scrubber feed conveyor every hour. The Company expects these grades to be an indication only as the usual coarse gold effect (nugget effect) still applies at this stage. Samples are composited to one sample per day. The samples are sent to ALS Global in Alice Springs for pulverising and then sent to ALS Global in Perth where they are assayed using a combination of leach-well (AA15) and Fire Assay (AA26) techniques.

The tails samples are collected with a continuous automatic tails sampling device and composited for the day. Samples are sent to ALS Global in Alice Springs where they are filter pressed to remove water content, and then sent to Perth for assay using Fire Assay (AA26) techniques.

Table A2.1. Plant Feed and Tails Assay Results for the first 13 days.

| Date | Plant Feed Grade (g/t Au) | Tails Assay Grade (g/t Au) | In-Plant Recovery (%) |
|--------------------------|---------------------------|----------------------------|-----------------------|
| 07-Sep | 5.06 | 0.46 | 90.90% |
| 08-Sep | 4.59 | 0.39 | 91.49% |
| 11-Sep | 3.38 | 0.46 | 86.39% |
| 12-Sep | 22.97 | 0.68 | 97.04% |
| 13-Sep | 6.54 | 1.04 | 84.10% |
| 15-Sep | 6.52 | 0.76 | 88.42% |
| 16-Sep | 32.30 | 0.80 | 97.52% |
| 17-Sep | 18.88 | 0.75 | 96.05% |
| 19-Sep | 12.35 | 0.77 | 93.81% |
| 20-Sep | 20.65 | 0.63 | 96.95% |
| 21-Sep | 26.45 | 0.49 | 98.15% |
| 22-Sep | 21.83 | 1.11 | 94.91% |
| 23-Sep | 8.26 | 0.81 | 90.25% |
| Totals / Averages | 14.60 | 0.70 | 95.40% |

Days 1 to 3 are from known low-grade sections of the Western Limb used as part of commissioning. Days 4 to 13 are Western Limb material and Western Limb / Old Pirate South Blends.