

ASX ANNOUNCEMENT / MEDIA RELEASE

ASX:ABU

March 19th, 2013

Northern Territory Geological Survey Annual Geoscience Exploration Seminar Presentation, AGES 2013

ABM Resources ("ABM" or "the Company") is pleased to present a technical exploration presentation. The presentation will be delivered by ABM's Exploration Manager Mr Pascal Hill at the Northern Territory Geological Survey Annual Geoscience Exploration Seminar on Tuesday 19th March, 2013 at 11 am in Alice Springs.

Due to the nature of this seminar the presentation focuses on ABM's regional exploration potential and work.

ABM is primarily focused on the advancement of the Twin Bonanza Gold Camp which includes the Old Pirate High-Grade Gold Project and the Buccaneer Porphyry Gold Project, however, the Company remains committed to regional exploration. In 2012, the Company conducted extensive regional geochemistry programs using the low-cost ionic-leach geochemistry method. This work is used to prioritise large areas into potentially drill ready targets.

In summary the 2012 work presented in the attached presentation details:

- More than 1000 square kilometres of terrain covered.
- 13 new large scale targets based on geochemical anomalies along with interpretations of geophysical and prospecting data including:
 - 9 of the 13 targets which show a geochemical response of a magnitude and extent greater than the Buccaneer Porphyry Project (which was used to benchmark the regional work).

Darren Holden, Managing Director of ABM Resources said, "We have consistently asserted that the Central Desert of Australia is the final frontier for gold discovery in Australia. The lack of previous exploration in a gold province proven to host world-class systems is what drives our exploration team to innovative and systematic work. As we progress the Old Pirate High-Grade Gold Project through the development phase we will continue to prioritise regional targets with this low-cost discovery focused activity."

About ABM Resources NL

ABM is an exploration company developing several gold discoveries in the Central Desert region of the Northern Territory of Australia. The Company has a multi-tiered approach to exploration and development with a combination of high-grade potentially short-term production scenarios such as Old Pirate and the Golden Hind, large scale discoveries such as Buccaneer, and regional exploration discoveries such as the Kroda Gold Project. In addition, ABM is committed to regional exploration programs throughout its extensive holdings.

Signed

A handwritten signature in blue ink, appearing to read "Jutta".

Jutta Zimmermann - CFO / Company Secretary

DISCLAIMER

This presentation has been prepared by ABM Resources NL (“ABM” or the “Company”). It should not be considered as an offer or invitation to subscribe for or purchase any securities in the Company or as an inducement to make an offer or invitation with respect to those securities. No agreement to subscribe for securities in the Company will be entered into on the basis of this presentation.

This presentation contains forecasts and forward looking information. Such forecasts and information are not a guarantee of future performance, involve unknown risks and uncertainties. Actual results and developments will almost certainly differ materially from those expressed or implied. ABM has not audited or investigated the accuracy or completeness of the information, statements and opinions contained in this presentation. Accordingly, to the maximum extent permitted by applicable laws, ABM makes no representation and can give no assurance, guarantee or warranty, express or implied, as to, and take no responsibility and assume no liability for, the authenticity, validity, accuracy, suitability or completeness of, or any errors in or omission from, any information, statement or opinion contained in this presentation.

You should not act or refrain from acting in reliance on this presentation material. This overview of ABM does not purport to be all inclusive or contain all information which its recipients may require in order to make an informed assessment of the Company’s prospects. You should conduct your own investigation and perform your own analysis in order to satisfy yourself as to the accuracy and completeness of the information, statements and opinions contained in this presentation and making any investment decision.

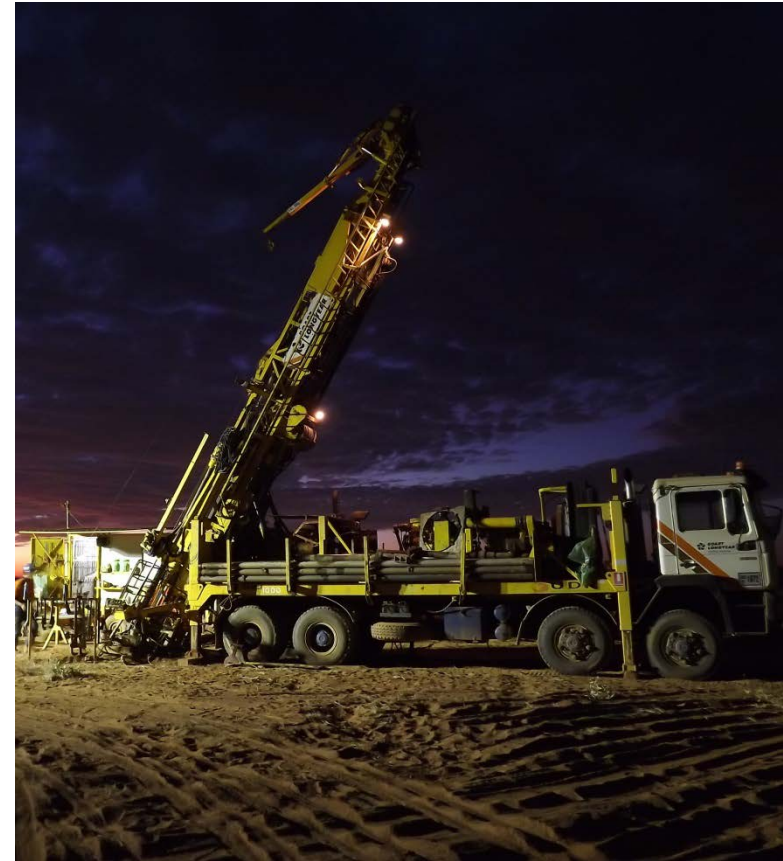
TECHNICAL STATEMENT / COMPETENT PERSONS STATEMENT

The information in this report that relates to Exploration Results, Mineral Resources or Ore Reserves is based on information compiled by Mr Darren Holden who is a Member of The Australasian Institute of Mining and Metallurgy. Mr Holden is a full time employee of ABM Resources NL and has sufficient experience which is relevant to the style of mineralisation and type of deposit under consideration and to the activity which he is undertaking to qualify as a Competent Person as defined in the 2004 Edition of the “Australasian Code for Reporting Exploration Results, Mineral Resources and Ore Reserves”. Mr Holden consents to the inclusion in the documents of the matters based on this information in the form and context in which it appears.

Refer to previous Company Press-Releases for full resource estimation details, drill hole details, and intercept calculations. A full list is provided in Appendix 1.

2012 Achievements

- Drilled 272 RC & 12 diamond holes
 - Total 48,039 metres (2012)
- Trenched 1,665 metres to date (2011 + 2012)
- Targets drilled:
 - 2 resource delineations
 - 4 resource extensions
 - 5 greenfields targets
- Geoscience staff:
 - 1 Chief Geo + 4 Project Geos + 3 Geos
 - Appointment of Exploration Manager
- ~\$12M expenditure
- Increased infrastructure as success continues at Twin Bonanza
- Lodged mining lease application



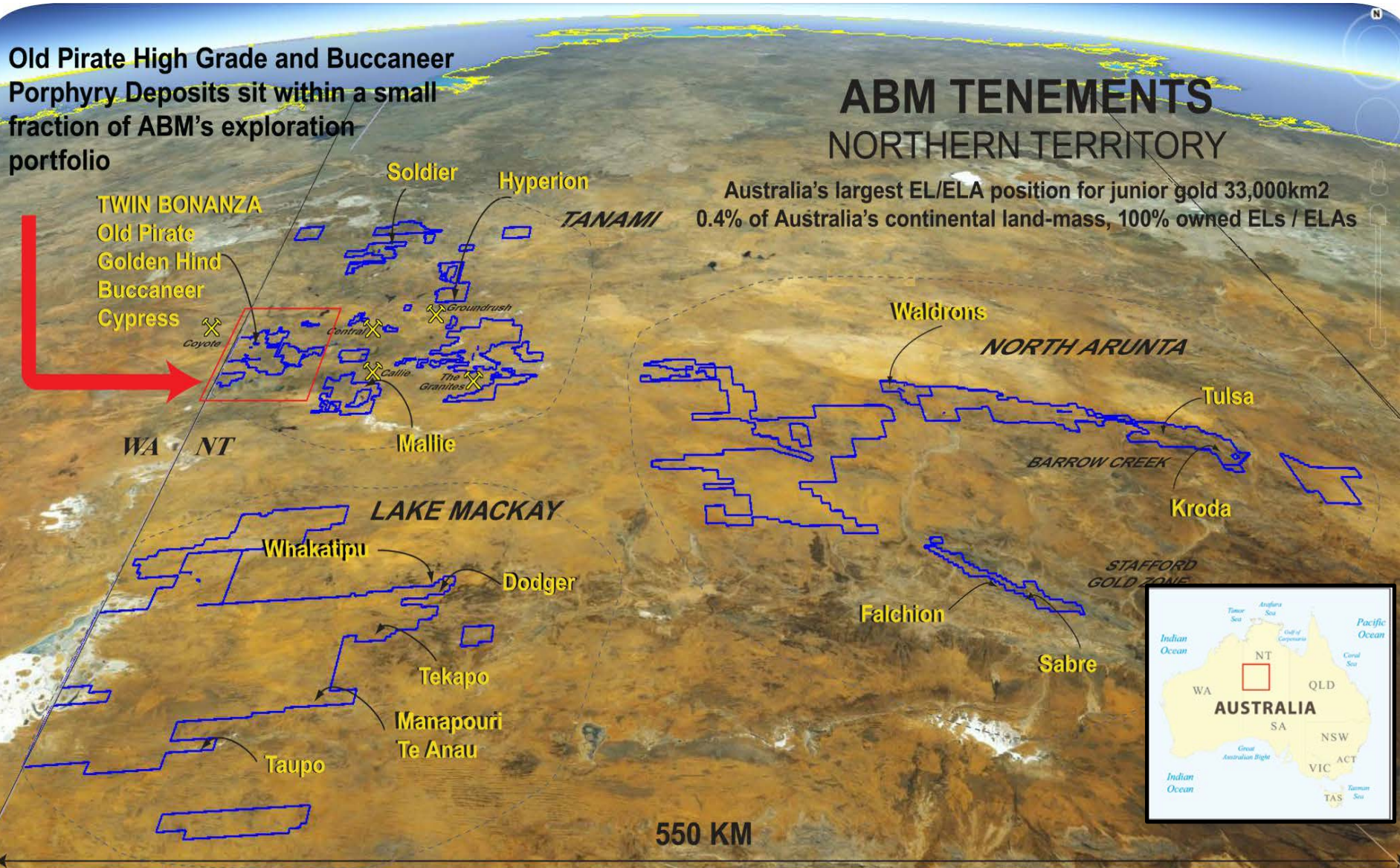
Where we are

Old Pirate High Grade and Buccaneer Porphyry Deposits sit within a small fraction of ABM's exploration portfolio

ABM TENEMENTS NORTHERN TERRITORY

Australia's largest EL/ELA position for junior gold 33,000km²
0.4% of Australia's continental land-mass, 100% owned ELs / ELAs

TWIN BONANZA
Old Pirate
Golden Hind
Buccaneer
Cypress



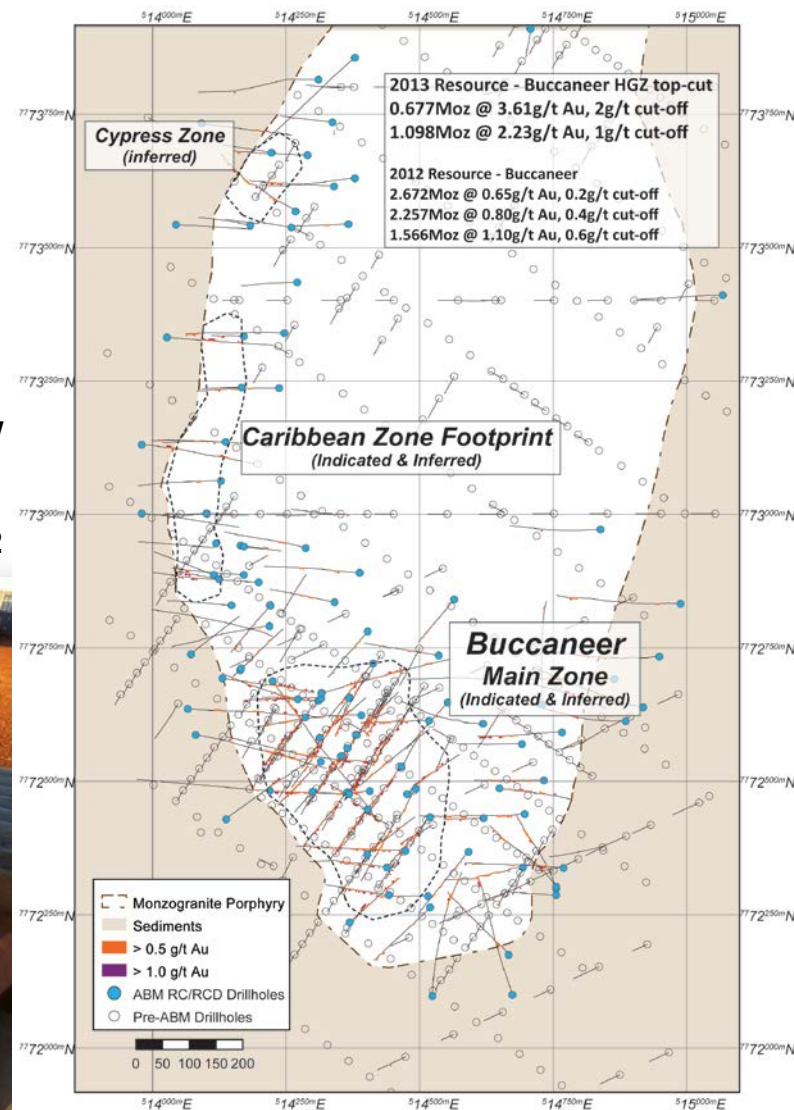
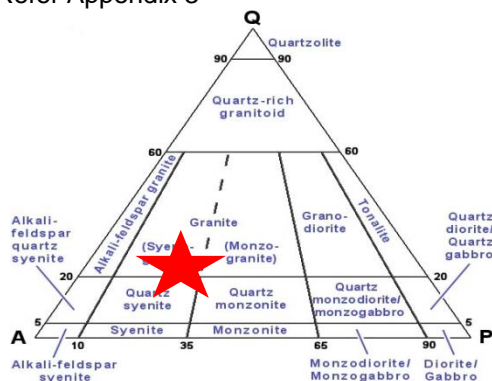
550 KM

Buccaneer

- Intrusion Related Gold System (IRGS)
- Porphyritic syenogranite host
- 2012 Inferred and Indicated Resource of:
 - 127.9Mt @ 0.65g/t Au for 2.67Moz gold (0.2g/t cut-off)
- 2013 Inferred and Indicated Buccaneer HGZ Resource of:
 - 15.3Mt @ 2.23g/t Au for 1.098Moz gold (1g/t cut-off / top-cut)

Represents an optimisation for higher grade within the 2012 Resource volume

Refer Appendix 3



Old Pirate

- **Following 2012 Maiden Resource, 2013 saw an updated Resource comprising:**
 - **Indicated 889kt @ 8.19 g/t for 234koz (300g/t top-cut)**
 - **Inferred 993kt @ 11.8 g/t for 377koz (300g/t top-cut)**
 - **Total 1,882kt @ 10.1g/t for 611koz (300g/t top-cut)**
- **Trenching and extensional works remain ongoing**
- **Recent soil sampling suggests continuation of the Old Pirate system to the north**
- **2012 saw the discovery of the Golden Hind, a spatially restricted zone of spectacular grade – incl 42m @ 44 g/t**

Refer Appendix 2



GOLDEN HIND – Lets find more!
July 2012 – recognised visible gold in veins.
September 2012 – Drilled 15m @ 118g/t.
February 2013 Resource 49koz @ 45.58g/t gold from surface.
Footprint is less than 80m long.

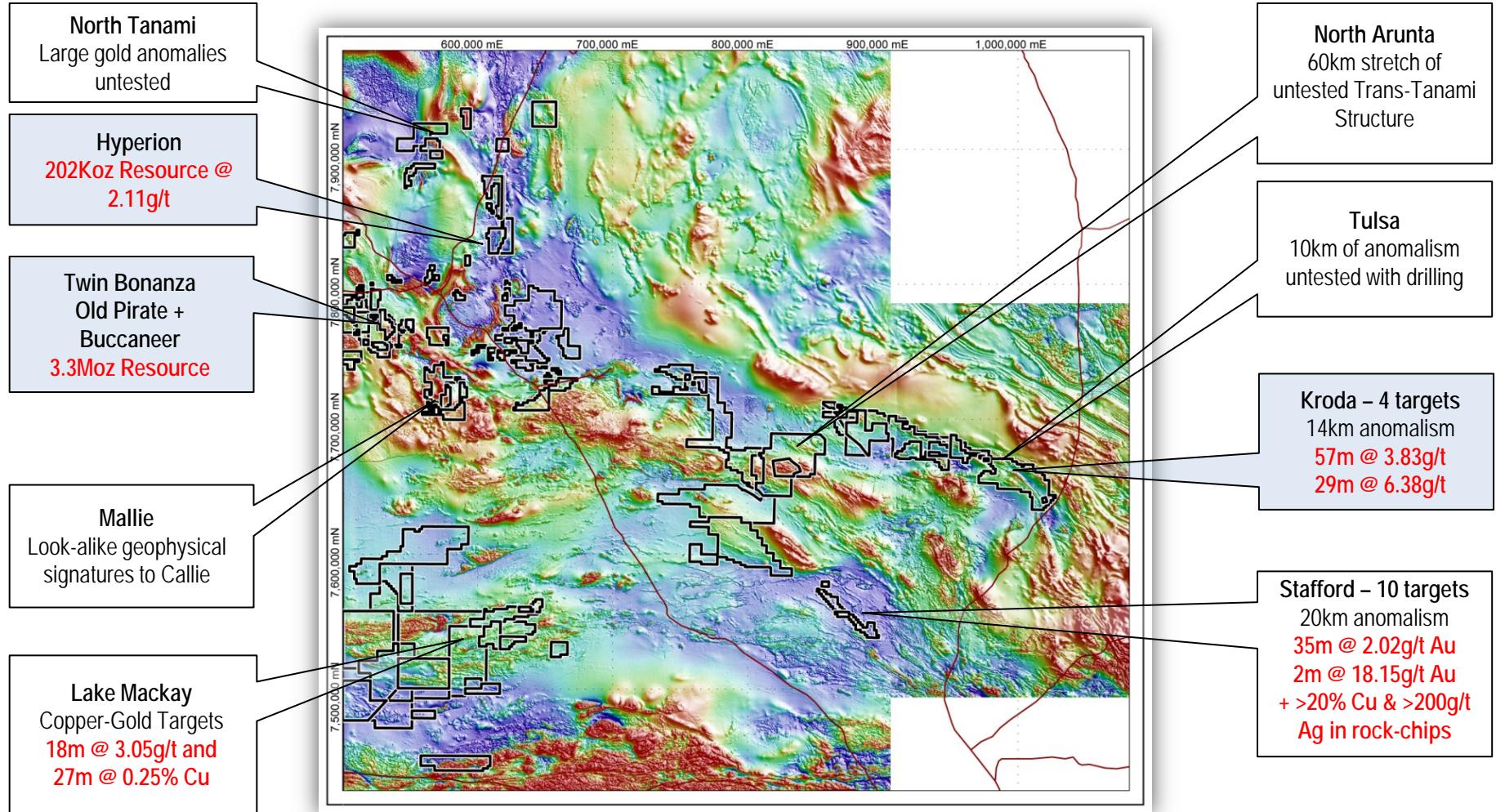


Old Pirate Bulk Sample

- **Planned completion of 10kt Bulk Sample in 2013**
- **Trial mining / processing and expanded trenching**
- **Aimed at increasing confidence in understanding:**
 - **Geology**
 - **Thickness**
 - **Mineralising controls**
 - **Grade distribution**
 - **Dilution management**
 - **Confirmation of metallurgical characteristics, ensuring ore is amenable to gravity-only recovery**



Beyond Twin Bonanza



600km

Beyond Twin Bonanza

2012 Regional Programme

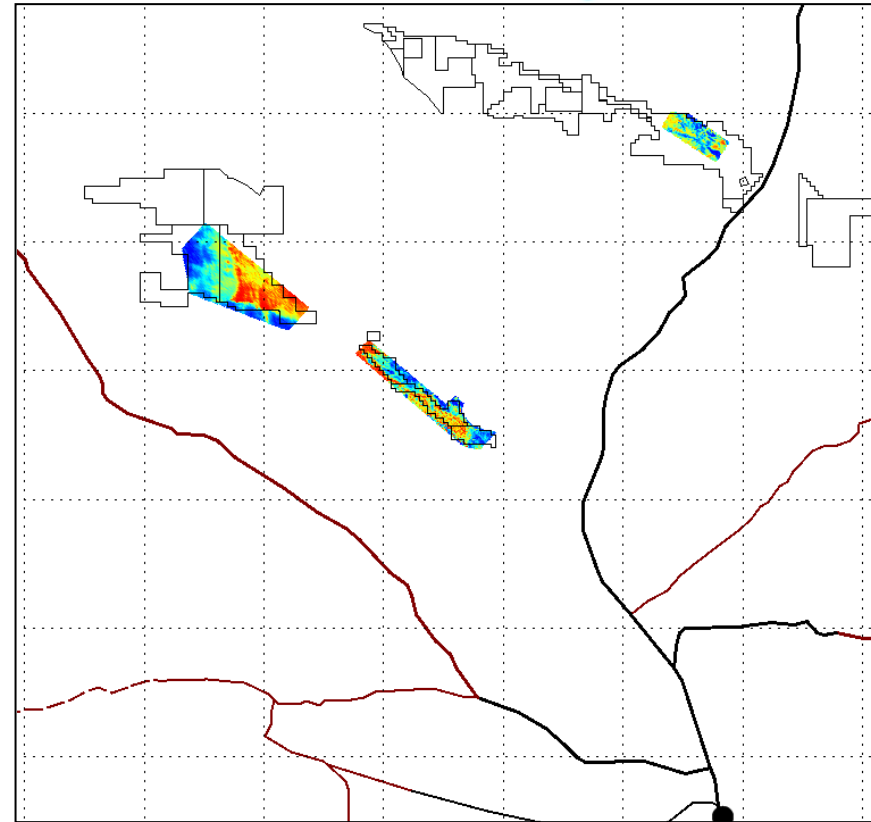
- **1,160 line km of Airborne EM over 3 areas for an aggregate of 2,200 sq. Km**
 - 2km x 50m conductor extending from Kroda
- **8 holes at Barrow Creek for 2,234 metres of RC drilling**
 - Drill test EM conductor
- **10 areas for an aggregate of 1,000 sq. km Ionic Leach Soil Sampling**
 - Rapid test, low cost, efficient, generation of new targets
- **Regional mapping**
 - Initiated regional mapping to define broad structural and stratigraphic setting, building a framework for target definition



Airborne EM

Low level Airborne EM completed by Fugro

- Survey included Barrow Creek, Reynolds Range / Stafford Gold Zone and Bonita Project areas
- 1,160 line km, for 2,200 sq. km
- Defined 12 targets at Barrow Creek and 4 targets at Reynolds Range / Stafford Gold Zone
- 6 targets at Barrow Creek form a single conductor approx. 2km in length with average thickness of 50m – ‘Emma’



Drilling

- Emma - an EM target on strike from Kroda 1
- EM indicates possible sulphides corresponding with a surface copper and zinc response
- 8 holes completed for an aggregate of 2,234 metres
- Results show wide intersections of sulphide with low level anomalous copper and gold
- Quartz-mica-andalusite schists and amphibolites interpreted to represent the Bullion Schist and meta-dolerites



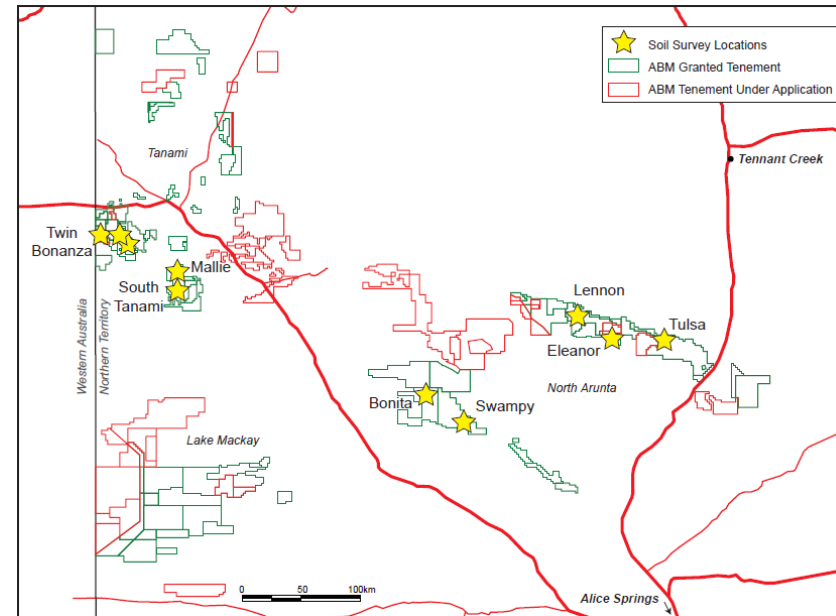
Ionic Leach Geochemistry

Orientation work completed successfully at Buccaneer

Ionic Leach selected as preferred technique for geochemical targeting*

Enables ABM to:

- **Rapidly prioritise target areas over vast tracts of land**
- **Very low-environmental impact requiring minimal support infrastructure**
- **An extremely efficient technique and alternative to RAB/Aircore geochem drilling**



* Description of technique and anomalies in Appendix 5



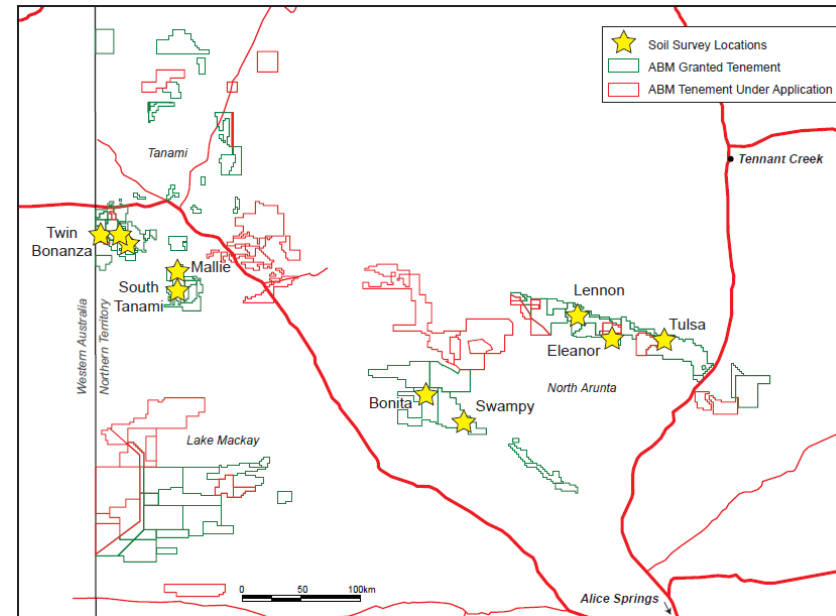
Ionic Leach Geochemistry

2012 saw Regional Sampling over 1,000 sq. km, including:

- South Tanami – South Tanami and Mallie
- Barrow Creek – Lennon, Eleanor and Tulsa
- Bonita – Swampy and Bonita

The 2012 Ionic Leach Geochemistry Programs Generated:

- 13 New and Large Scale Regional Geochemical Targets
- 135 sq km of new anomalies
- 9 Anomalies Rank Higher than Buccaneer orientation study response



Ionic Leach Geochemistry

Results

- **Mallie**

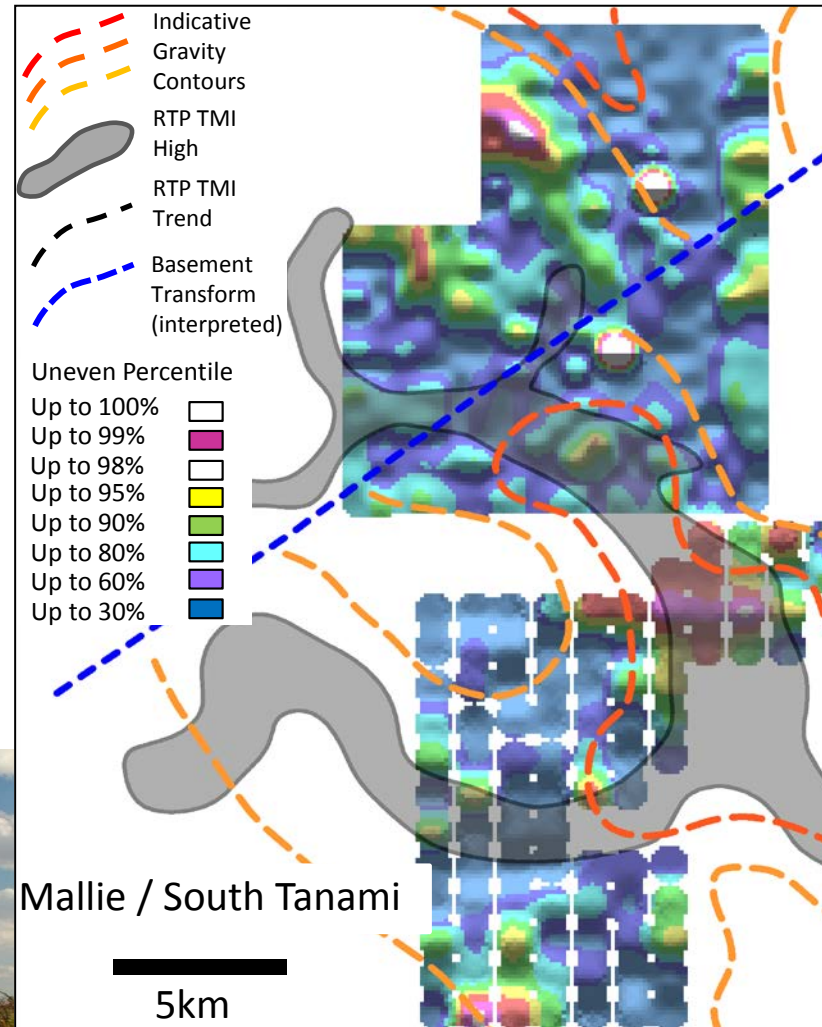
- 30km WNW of Callie, favourable geophysics
- Strong gold geochemistry results correlating well with magnetic and gravity features

Gold Anomalies: 3 x 2km and 5 x 1.6km

- **South Tanami**

- 20km W of Callie, favourable geophysics
- Detected north end of Officer Hill prospect
- Strong results correlate well with gravity

Gold Anomalies: 4 x 1km and 5 x 3.5km

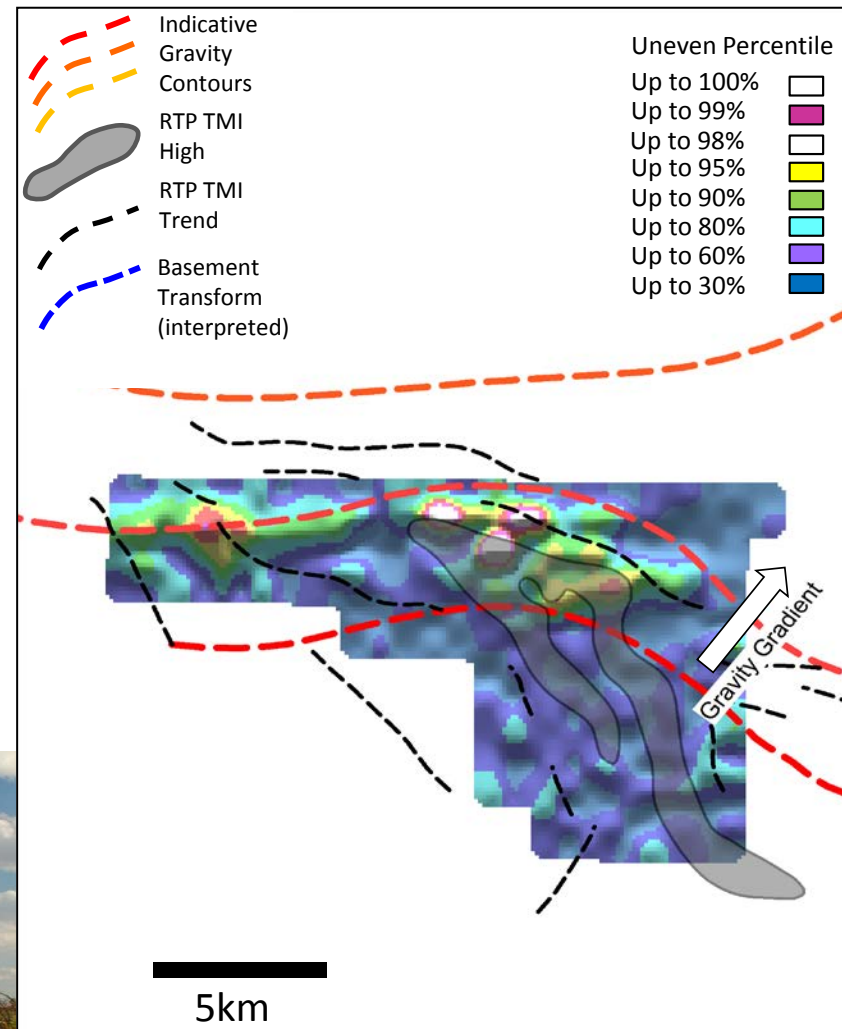


Ionic Leach Geochemistry

Results

- Lennon
 - Testing the relationship between historic geochemical anomalies and folded stratigraphy
 - Results correspond well with magnetic response.

Gold Anomalies: 6 x 2km and 4 x 1.6km



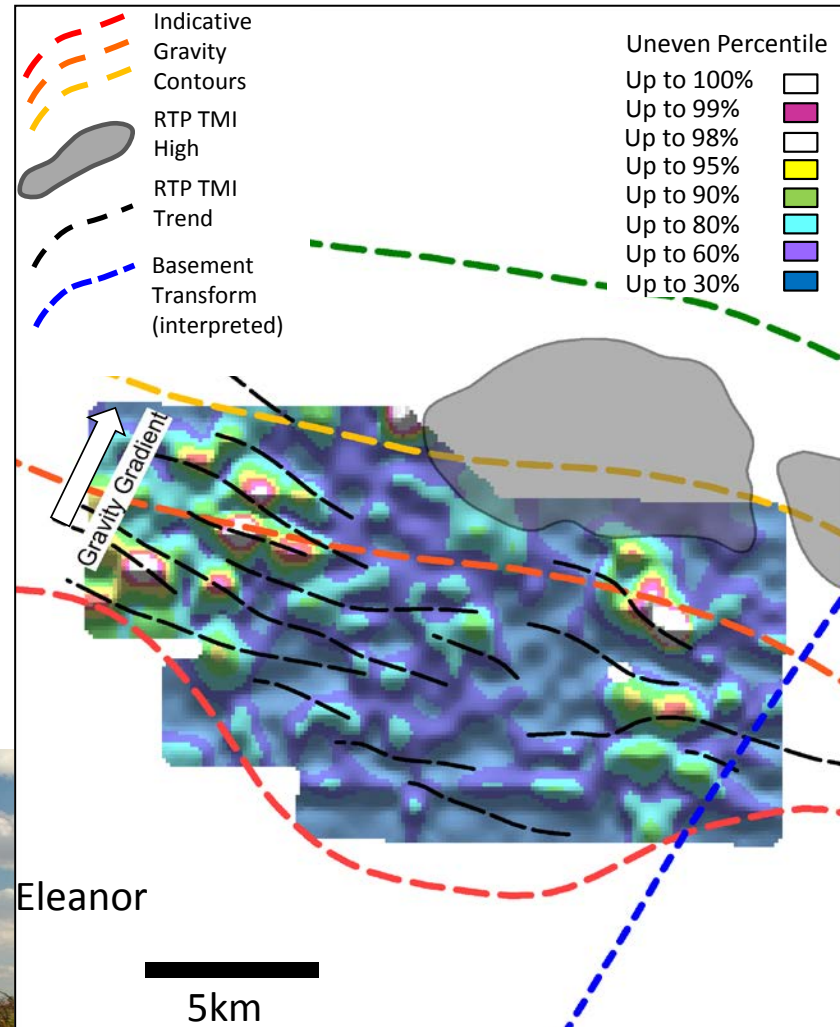
Ionic Leach Geochemistry

Results

- Eleanor

- Historic geochemical anomalies associated with strong linear magnetic features
- Several anomalies, correlating well with magnetic response

Gold Anomalies: 3 x 1.5km and 7.4 x 6.2km



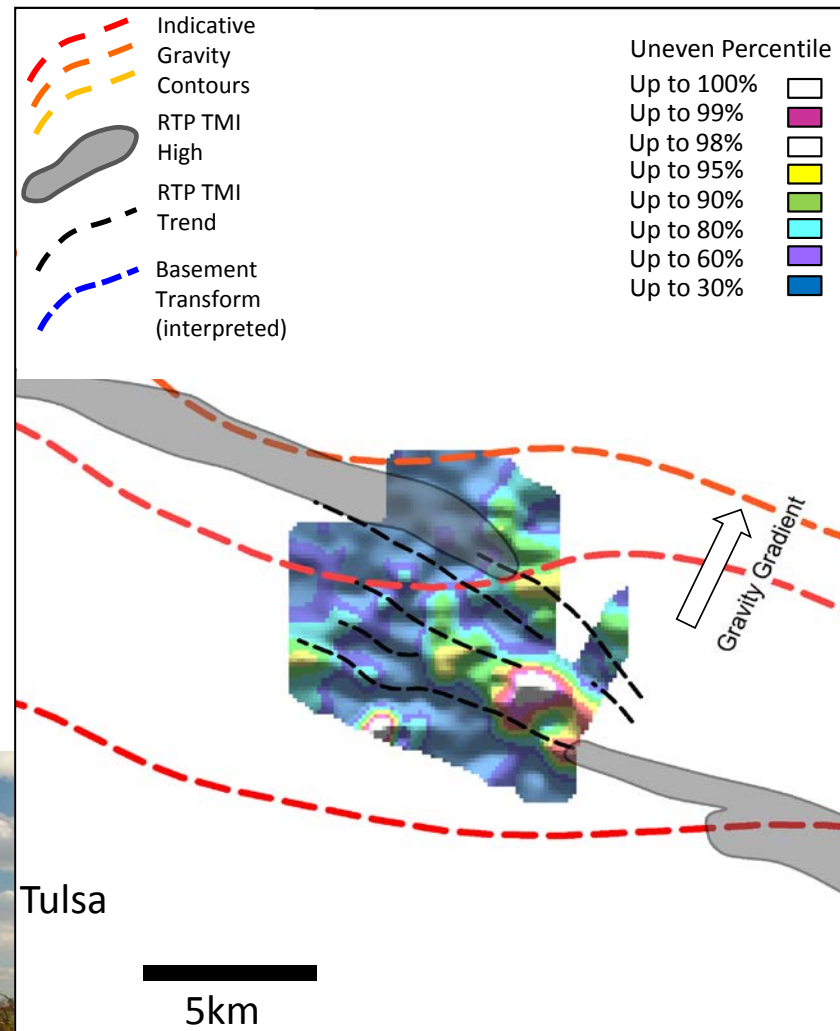
Ionic Leach Geochemistry

Results

- **Tulsa**

- Located 15km WNW, on strike, from Kroda
- Results at Tulsa fall within an extension of the Kroda magnetic response, extending the potential strike length of the Kroda system by 14km

Gold Anomalies: 4 x 2km and 3 x 1km



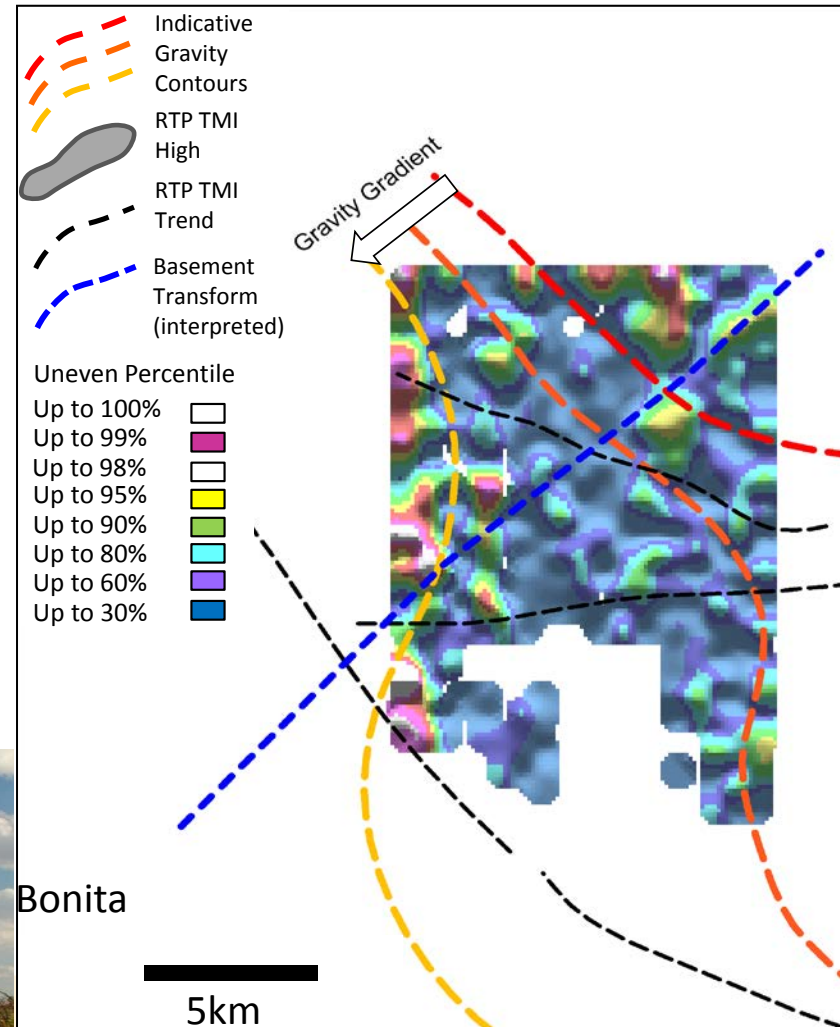
Ionic Leach Geochemistry

Results

- Bonita

- Conceptual target, broad area of magnetic anomalies
- Western portion of survey is anomalous and remains open
- Does not correlate well with magnetics

Gold Anomalies: 6 x 1km open to west



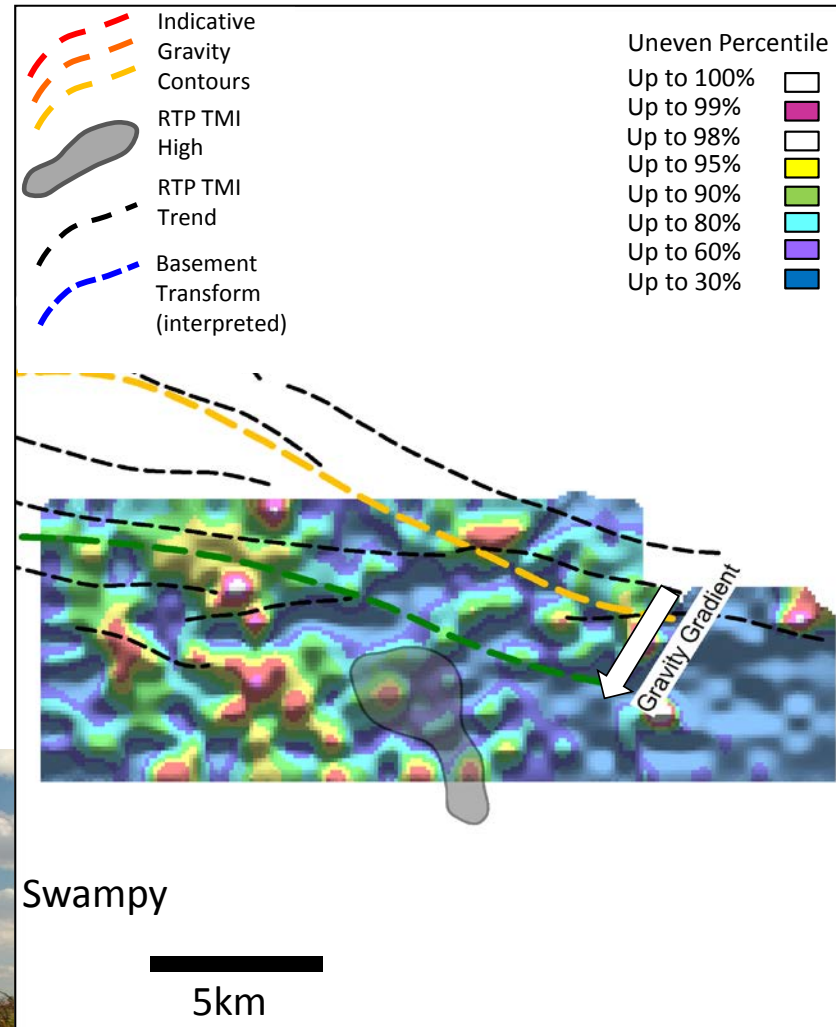
Ionic Leach Geochemistry

Results

- **Swampy**

- **Conceptual target over a discrete magnetic feature, extending to an area of weak linear magnetic features**
- **Soil gold response is patchy, and correlates with the weak linear magnetic features**

Gold anomalies: 7 x 2km



2013 Work Programme

Priority is completion of Bulk Sample and progression to Mining

Exploration is prioritised at increasing the size of the Twin Bonanza Gold Camp, through continued mapping, surface sampling, trenching and further extensional drilling – looking for more Golden Hinds

Regional reconnaissance exploration following up on 2012 target generation

Rapid ground testing will continue, with extensive Ionic Leach soil programmes and mapping proposed for:

Lake Mackay

Barrow Creek – Lander River

Reynolds Range / Stafford Gold Zone – Bonita

Greater Twin Bonanza – South Tanami – Euro - Suplejack



Thank you

For Further Information Please Contact ABM Resources

Managing Director – Darren Holden

CFO / Company Secretary – Jutta Zimmermann

Exploration Manager– Pascal Hill

admin@abmresources.com.au

Tel +61 (0) 8 9423 9777



Appendix 1: List of ASX announcements relating to technical results in this presentation. Reference for intercept calculation method, resource estimation, assay results and sampling techniques etc.

Date	Title
05/02/2013	Buccaneer Higher Grade Zones Establish Growth Pathway
04/02/2013	Significant Upgrade for Old Pirate sets ABM for Trial Mining
26/11/2012	Old Pirate Western Limb Widens with High-Grade at Depth
19/11/2012	New High Grade Veins Uncovered at Surface at Old Pirate
16/11/2012	First Results from Old Glory
19/10/2012	OP Western Limb Extends with Surface Sampling av. 52.3g/t
09/10/2012	Extensional Exploration Results with Assays up to 156g/t Gold
02/10/2012	Golden Hind Spectacular Drill Intersections 42m @ 44g/t
17/09/2012	High-Grade Discovery Confirmed at Golden Hind 17m @ 29.43g/t
05/09/2012	Old Pirate Test Work – Exceptional gravity Gold Recovery
20/08/2012	Exploration Update Golden Hind and New Prospect
06/08/2012	High Grade Gold results from the Golden Hind Discovery
02/08/2012	Old Pirate High Grade Drill Results 5m @ 52.27g/t gold
01/08/2012	High Grade Gold Drill Results at Buccaneer
16/07/2012	Phase 3 Surface Vein Sampling Extends Old Pirate
09/07/2012	Phase 2 Surface Sampling on East Side Vein
28/06/2012	New Prospect with Coarse Visible Gold at Surface
15/06/2012	New High Grade Vein Uncovered at Old Pirate
14/06/2012	High Grade Gold Drill Results Extend Buccaneer
15/05/2012	Old Pirate Stage 1 Scoping Study Results
03/05/2012	2012 Exploration Season Underway
16/04/2012	3.3 Million Ounces Gold in Resources
12/03/2012	Hyperion Drill Results show wide mineralised zones
07/03/2012	Latest Results Extend Eastern Contact Zone

Date	Title
28/02/2012	Hyperion Best Ever Intercept 35m @ 5.43 g/t Gold
08/02/2012	Old Pirate Trenching Extends to 726 metres @ 24.01g/t Gold
20/01/2012	ABM and Tanami Gold enter Memorandum of Understanding
20/01/2012	TAM: Tanami Gold NL and ABM enter MOU
19/01/2012	Impressive Drill Results from Buccaneer Porphyry
18/01/2012	Cypress Zone Drill Results 8m @ 7.43g/t Au within 87m @ 1.13g/t
5/01/2012	Old Pirate Trenching Update - 582m strike @ 23.98g/t Gold
23/12/2011	BRR -ABM extends high grade trenching results at Old Pirate
22/12/2011	Old Pirate Trenching Extends to 427m Strike @ 21.85g/t Gold
5/12/2011	Technical and Corporate Update Presentation
30/11/2011	Broadcast - MD talks Gold from the Old Pirate
29/11/2011	High Grade Old Pirate Phase 2a Trench Results
28/11/2011	Twin Bonanza Drill Results Extending Caribbean to Cypress
24/11/2011	Historic Access Agreement Signed for Lake Mackay Regional
24/11/2011	Lake Mackay Phase 1 Drill Results
09/11/2011	Drilling Commences at Hyperion
24/10/2011	Further Buccaneer Drill Results
13/10/2011	Old Pirate Trenching Combined Strike Length 166m @ 19.17g/t Au
11/10/2011	Buccaneer Extension 26m @ 2.9g/t within 18m @ 4.05g/t Gold
27/09/2011	Drilling at Kroda Confirms Second Discovery Camp in the NT
12/09/2011	New Discovery at Cypress Prospect with 26m @ 5.53g/t Gold
07/09/2011	Old Pirate Northern Extensions Further High Grade Results
02/09/2011	Broadcast - ABM Gold Assays over 400 Grams per Tonne
31/08/2011	Old Pirate Northern Extensions High Grade Drill Results

Appendix 1: List of ASX announcements relating to technical results in this presentation. Reference for intercept calculation method, resource estimation, assay results and sampling techniques etc.

Date	Title
24/08/2011	Drilling Commences at Lake Mackay Copper-Gold Targets
17/08/2011	Caribbean Zone and Buccaneer Deposit Significantly Extended
09/08/2011	Broadcast Spectacular Gold at Old Pirate Northern Extensions
08/08/2011	Spectacular Gold at Old Pirate Northern Extensions
01/08/2011	Further Extensional Buccaneer Drill Results
18/07/2011	Further Extensions at Buccaneer and New Porphyry Discovery
04/07/2011	New Sedimentary Hosted Oxide Gold Discovery at Twin Bonanza
20/06/2011	Drilling Commences at the Kroda Gold Project
17/06/2011	Broadcast -ABM hits New Gold Zone and Extends Mineralisation
16/06/2011	Further Success at Buccaneer - Discovery at Caribbean Zone
09/06/2011	First 2011 Drilling Extends Buccaneer
10/05/2011	Updated Investor Presentation
09/05/2011	Exploration Update Twin Bonanza Program Ahead of Schedule
27/04/2011	Extensional Drilling Underway at Buccaneer Western Zone
04/04/2011	Metallurgical Tests Reveal High Quality Ore - 99.5% Recovery
22/03/2011	Presentation - Twin Bonanza and 1.67 Moz Buccaneer Deposit
21/02/2011	Presentation - 1.67 Moz Gold - And We've Only Just Begun
21/02/2011	Maiden Resource Estimation for Buccaneer
03/02/2011	Twin Bonanza Gold Camp Expands to 30 Targets
31/01/2011	New Targets at Twin Bonanza Gold Camp
13/01/2011	Buccaneer Porphyry Delivers Impressive Results
11/01/2011	Drill Results from the Hyperion Gold Project
13/12/2010	Buccaneer Continues To Grow With Step Out Drilling

Date	Title
15/11/2010	2010 Old Pirate Drilling and Screen Fire Assay Program
04/11/2010	ABM adds second drill rig to NT exploration programs
18/10/2010	Step Out Drilling at Buccaneer Delivers Excellent Intercepts
22/09/2010	ABM Continues to Expand Buccaneer Gold Porphyry
13/09/2010	Best Intersection at Buccaneer - 202m grading 1g/t Gold
31/08/2010	Update Old Pirate High Grade Gold Prospect at Twin Bonanza
19/08/2010	Buccaneer Porphyry Gold Drill Results Double Vertical Extent
27/07/2010	Bonanza Grades at Old Pirate - 5 metres at 274 g/t Gold
12/07/2010	Drill Results - 35m at 6.35g/t Au inc 8m at 21.78g/t Au
07/07/2010	Exploration Update - Visible Gold at Old Pirate South
15/06/2010	Exploration Update from Twin Bonanza
24/05/2010	First Drill Results - High Grade Intercept Extends Sabre
13/05/2010	Samples Return 20.3% Copper and 271 g/t Silver
27/04/2010	ABM Resources Announces the Commencement of Drilling
16/04/2010	Presentation - The Big 8
31/03/2010	Newmont Transaction Complete - Prioritising 8 Discoveries
16/03/2010	Kroda Gold Project - 6 Metres at 25.9g/t Gold
09/03/2010	Hyperion Gold Project with 60 m at 2.57 g/t Gold
02/02/2010	The Old Pirate High Grade Gold Project
01/02/2010	Detail on the Twin Bonanza Porphyry Gold Project
28/01/2010	Acquisition of Advanced Gold Prospects from Newmont
18/01/2010	Exploration Update for Reynolds Range Project Area
07/01/2010	ABM Provides Exploration Update for Lake Mackay Project

Appendix 2. Old Pirate Deposit Indicated & Inferred Resource Refer release dated 4/02/2013 for further details

Table 1. Old Pirate Trend Overall High-Grade Mineral Resource Estimation January 2013

Category	Tonnes	Gold Grade (g/t) (300g/t top-cut)	Gold Grade (g/t) (uncut)	Ounces Gold (300g/t top-cut)	Ounces Gold (uncut)
Indicated	889,000	8.19	8.93	234,100	255,300
Inferred	993,000	11.80	14.67	376,900	468,500
Total	1,882,000	10.10	11.96	611,000	723,800

Mineral Resources estimated at 1g/t cut-off except for the Central Zone estimated at a 3g/t cut-off. Totals may vary due to rounding. There is an additional 414,900 tonnes averaging 1.74g/t gold for 23,300 ounces of gold in low-grade Indicated Resource in the Central Zone (>1g/t, <3g/t cut-offs).

**Note - totals may vary due to rounding.*

Appendix 3 Buccaneer Gold Deposit Indicated & Inferred Resource. Refer release dated 16/04/2012 & 5/02/2013 for further details.

Table 1. Buccaneer Gold Deposit 2012 Indicated and Inferred Resource.

Category	Million Tonnes	Cut Off Grade (g/t Au)	Grade Uncut (g/t Au)	Million Ounces Gold uncut
Indicated	34	0.2	0.64	0.702
Inferred	93.9	0.2	0.65	1.970
Total	127.9	0.2	0.65	2.672

Note – Million Tonnes (MT) rounded to 3 significant figures; gold grade rounded to 3 significant figures and Million Ounces (Moz) rounded to 3 significant figures. Refer to release dated 16/04/2012 for further details.

Table 2. Buccaneer HGZ Resource at 2g/t cut-off.

Category	Tonnes	Grade (g/t Au) top-cut	Grade (g/t Au) uncut	Ounces Gold top-cut	Ounces Gold uncut
Indicated	2,261,000	3.39	4.17	246,200	303,000
Inferred	3,573,000	3.75	4.56	431,100	523,500
Total	5,834,000	3.61	4.41	677,300	826,500

Table 3. Buccaneer HGZ Resource at 1g/t cut-off.

Category	Tonnes	Grade (g/t Au) top-cut	Grade (g/t Au) uncut	Ounces Gold top-cut	Ounces gold uncut
Indicated	7,117,000	2.00	2.25	458,500	515,300
Inferred	8,183,000	2.43	2.78	639,700	732,200
Total	15,300,000	2.23	2.54	1,098,200	1,247,500

**Note - totals may vary due to rounding.*

Appendix 4 Hyperion Gold Deposit Inferred Resource. Refer release dated 16/04/2012 for further details.

Table 1. Hyperion Gold Project Resource Estimation without top-cut.

0.8g/t cut off	Tonnes	Gold (g/t)	Ounces
Hyperion Central	2,209,000	2.14	152,100
Hyperion South	768,000	2.71	66,800
Total	2,977,000	2.29	219,000
2g/t cut-off	Tonnes	Gold (g/t)	Ounces
Hyperion Central	875,000	3.36	94,400
Hyperion South	272,000	5.37	47,000
Total	1,147,000	3.83	141,400

Table 2. Hyperion Gold Project Resource Estimation with 50g/t top-cut.

0.8g/t cut off	Tonnes	Gold (g/t)	Ounces
Hyperion Central	2,209,000	2.06	146,600
Hyperion South	768,000	2.25	55,500
Total	2,977,000	2.11	202,200
2g/t cut-off	Tonnes	Gold (g/t)	Ounces
Hyperion Central	875,000	3.17	89,100
Hyperion South	272,000	4.08	35,700
Total	1,147,000	3.38	124,800

**Note - totals may vary due to rounding.*

Appendix 5 Ionic Leach Geochemistry. Background and Description.

ABM is trialling new techniques (namely Deep Penetrating Geochemistry (DPG)) that look specifically for deposits buried under cover with very low (ppb to ppt concentrations) surface geochemical signals.

The DPG techniques all assume that some form of upward movement of metal ions has taken place through the cover, changing the surface chemistry in some detectable fashion. Techniques include multiple weak leach techniques, pH & conductivity surveys and very low detection laboratory assays. The aim of these techniques is to detect mineralisation that is covered by many metres of transported cover and is essentially 'blind' at surface.

Following successful orientation surveys completed in 2011 at Buccaneer, ABM determined that the Ionic Leach methodology is most suitable for delineation of buried gold mineralisation in the Central Desert region of the Northern Territory of Australia.

DPG results are not typically reported as absolute values, as the assay results are in the part-per-trillion range. Rather, the results are regarded as a population and relative scores (or percentiles) are assigned based on sample ranking within the entire population. For clarity, the 2012 results have been ranked and compared to the 2011 DPG results from Buccaneer (which falls in the 80 – 90 percentile range when compared to the current surveys), such that the reader can gain a suitable context as to the tenor of anomalism. ABM uses an uneven percentile ranking system comprising ranges between the 30th, 60th, 80th, 90th, 95th, 98th, 99th and 100th percentiles.

Results from the 2012 Regional Sampling indicate 13 anomalies for further work. These anomalies are ranked and described in the table below.

Appendix 5 Ionic Leach Geochemistry Ranked Anomaly Table

Prospect	Sample Spacing	Percentile Range	Surface Extent	Comments
Mallie	500m x 500m	95 - 100	3 x 2km	Geophysical signatures analogous to Callie (located 30km to the ESE)
Tulsa	500m x 250m	95 - 100	4 x 2km	Continuation of Kroda Trend (northern flank – Kroda 1, 2, 3)
Eleanor	500m X 500m	90 - 100	3 x 1.5km	Zone of fault interaction, close to interpreted intrusive
Eleanor	500m x 500m	80 - 100	7.4 x 6.2km	Folded stratigraphy, potentially comparable with Callie - DBS
Lennon	500m x 500m	80 - 100	6 x 2km	Folded, strongly magnetic, stratigraphy potentially comparable to Callie - DBS
Tulsa	500m x 250m	80 - 100	3 x 1km	Continuation of Kroda Trend (southern flank – Kroda 4)
Lennon	500m x 500m	90 - 99	4 x 1.6km	Folded, moderately magnetic, stratigraphy potentially comparable to Callie - DBS
Sth Tanami	1km x 1km	90 - 99	4 x 1km	Northern extension of Officer Hill prospect (outside ABM tenure)
Mallie	500m x 500m	95 - 98	5 x 1.6km	Geophysical signatures analogous to Callie (located 30km to the ESE)
Buccaneer	450m x 75m	80 - 100	1.5 x 1.2km	Previous estimate of 1.67Moz. Surface footprint of 0.1 – 0.5ppm Au beneath 10m transported cover
Sth Tanami	1km x 1km	80 - 90	5 x 3.5km	Geophysical signatures analogous to Callie (located 22km to the ENE)
Swampy	500m x 500m	30 - 60	7 x 2km	Magnetic stratigraphy. Thick cover responsible for subdued DPG response
Bonita	500m x 500m	60 - 80	Open	Survey partially complete. Folded magnetic stratigraphy