

ASX ANNOUNCEMENT / MEDIA RELEASE

ASX:ABU

9th October, 2012

***High Grade Extensional Exploration Results from Old Pirate
with Assays up to 156g/t Gold***

ABM Resources NL ("ABM" or "The Company") is pleased to announce a series of drill holes that are primarily outside and therefore additional to the Old Pirate April 2012 Gold Resource estimation. Old Pirate is located on the Twin Bonanza Gold Project, which is the same project as the Buccaneer Porphyry Gold Deposit and the Golden Hind high grade gold discovery, in the Northern Territory of Australia.

Northern extensions of the Western Limb Lode

The northern extensions of the Western Limb Lode are represented by a high grade gold bearing quartz vein. Surface sampling of these northern extensions reported earlier this year showed 126 metres of strike length from a 20cm to 50cm wide vein averaging 42.37g/t. Drill results across these northern extensions have encouragingly shown wider intersections of mineralisation than the vein exposed at surface. All intersections below (at 1.0g/t cut-off) are within 100 metres of surface and have a high probability of being included in a modified open-pit design.

Highlights include:

- Hole OPRC100140 intersected 2 metres averaging 87.88g/t gold (including 1 metre grading 156.5g/t gold).
- Hole OPRC100141 intersected 2 metres averaging 35.40g/t gold.
- Hole OPRC100114 intersected 3 metres averaging 10.11g/t gold.
- Hole OPRC100146 intersected 1 metre grading 30.60g/t gold.
- Hole OPRC100143 intersected 3 metres averaging 9.30g/t gold.
- Hole OPRC100119 intersected 1 metre averaging 25.40g/t gold.
- Hole OPRC100136 intersected 4 metres averaging 6.08g/t gold.

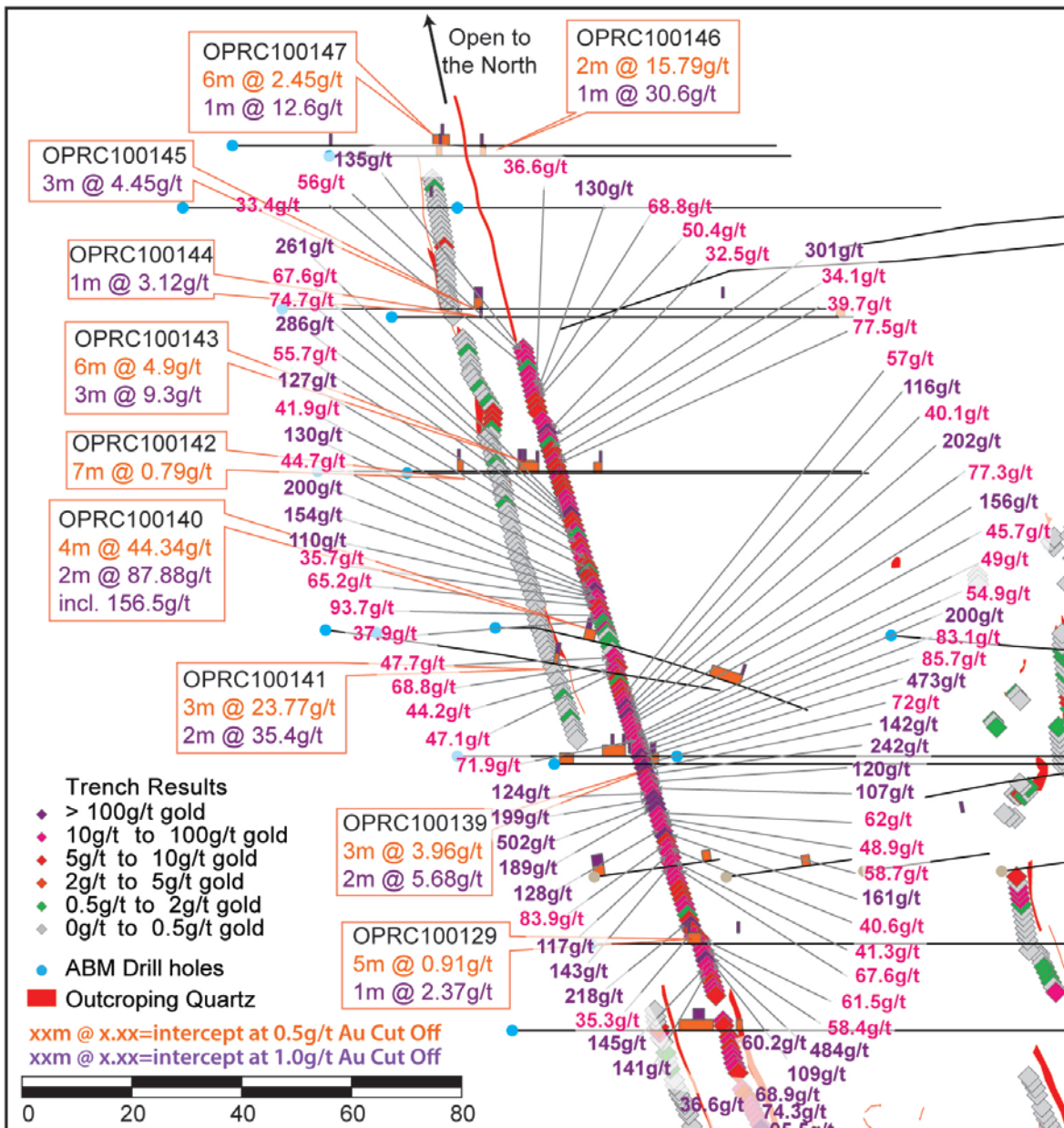


Figure 1 - Map View of Surface Sampling and Drilling from the northern extensions of the Western Limb.

Darren Holden, Managing Director of ABM Resources said, "The Old Pirate extensional work along with the recent spectacular results from the nearby Golden Hind Prospect provide valuable additions to the high grade system and the Company intends to issue a resource update following completion of the 2012 program. Drilling is on-going with two rigs currently operational on site."

First drilling under the Eastside Vein

The Eastside vein was not included in the April 2012 Resource estimation, as it had not been mapped and sampled at that time. Systematic surface work since then has linked this vein to the Old Pirate South area and revealed a 340 metre strike length vein between 20 centimetres and 3 metres width with high grade gold at surface. Gold in the vein at surface was very coarse with grains up to 0.5cm erratically distributed throughout the vein. The results of drilling beneath the surface vein to depths of 50 metres are likely to be included in an expanded open pit design.

Results include:

- Hole OPRC100079 intersected 5 metres averaging 8.72g/t gold (including 1 metre averaging 25.30g/t gold).
- Hole OPRC100071 intersected 4 metres averaging 3.13g/t gold.
- Hole OPRC100066 intersected 2 metres averaging 3.32g/t gold.
- Hole OPRC100096 intersected 1 metre grading 8.13g/t gold.
- Hole OPRC100095 intersected 3 metres averaging 3.22g/t gold.
- Hole OPRC100088 intersected 1 metre grading 6.95g/t gold.

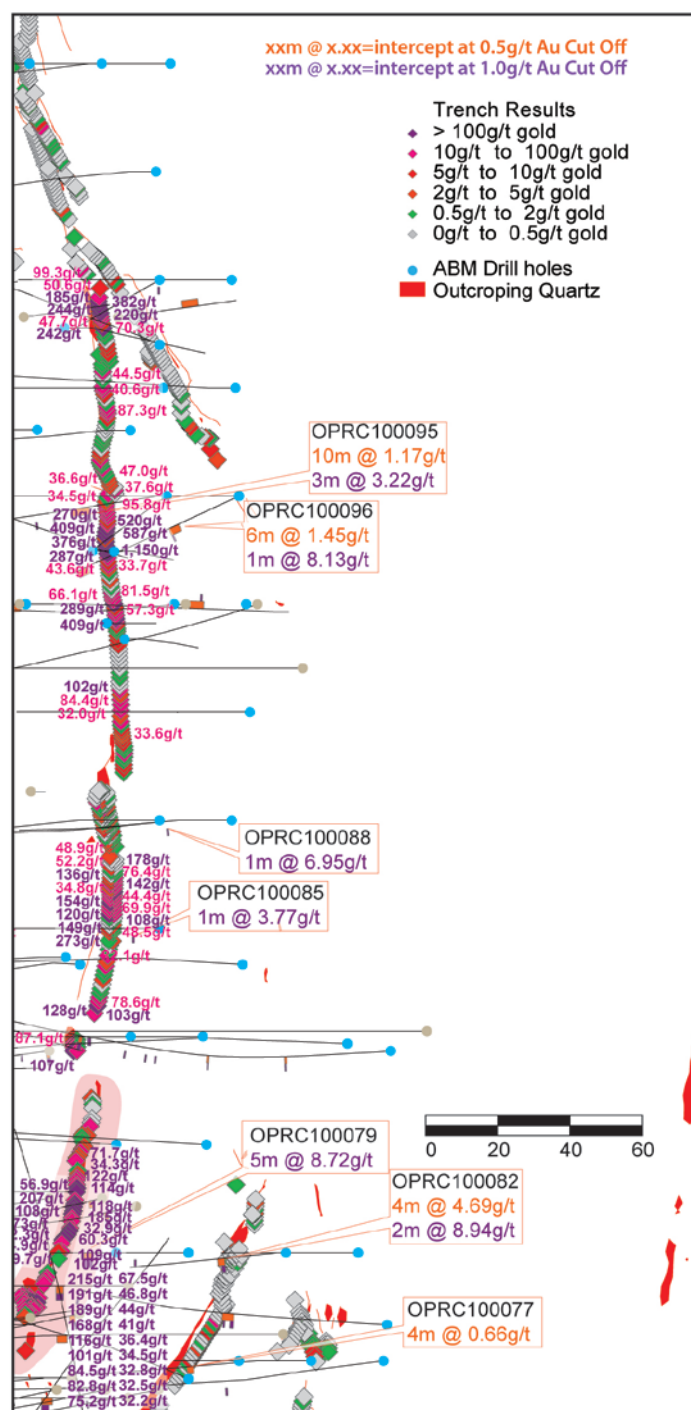


Figure 2 - Map view of the first drilling and surface sampling from East Side Vein. Other results pending.

2012 Old Pirate Extensional Program

One of the main objectives of the 2012 work at Old Pirate is to understand and delineate the dimensions of the system. The Resource at Old Pirate is currently estimated (as of April 2012) as 427,400 ounces averaging 7.95g/t gold (top cut), extending from surface to depths of approximately 200 metres. Since the commencement of the field season in May 2012, ABM has focused on extending this high grade / coarse gold system and infilling gaps within the resource. As previously noted in releases, Old Pirate consists of coarse gold distributed throughout quartz vein systems. In many cases an intersection of a few grams per tonne gold in a quartz vein can indicate the presence of a much higher grade vein.

The work presented in this release includes the identification of extensions to the Western Limb lode beyond the northern limit of the April 2012 Resource. Approximately 300 metres of the Western Limb is included in the Resource to date, and this work adds a further 130 metres of strike length and remains open to the north. The extensional drilling revealed mineralised quartz veins up to 6 metres wide. Results are shown in Figure 1.

In addition, this release includes the first drilling beneath the Eastside vein (Figure 2). The Eastside vein is a high-grade quartz vein with coarse gold outcropping at surface. This work confirms the presence of the vein to a depth of at least 50 metres beneath the surface. Further drill samples from this area are pending analysis.

Other results presented in Appendix 1 and Figure 3 include extensions to the East Limb as well as testing of other veins and conceptual targets peripheral to the existing gold resource.

Drilling is on-going at both Old Pirate and the recent Golden Hind discovery with further results expected shortly.

About the Old Pirate High Grade Gold Deposit

The Old Pirate Gold Deposit is a high grade system with current resources of 427,400 ounces of gold averaging 7.95g/t gold (top cut) or 565,000 ounces averaging 10.95g/t gold (uncut) (refer Appendix 3). Gold bearing quartz veins range from a few centimetres to over 6 metres in width and extend over an area approximately 800 metres by 200 metres. Quartz veins are hosted in a folded interlayered sandstone / shale sequence.

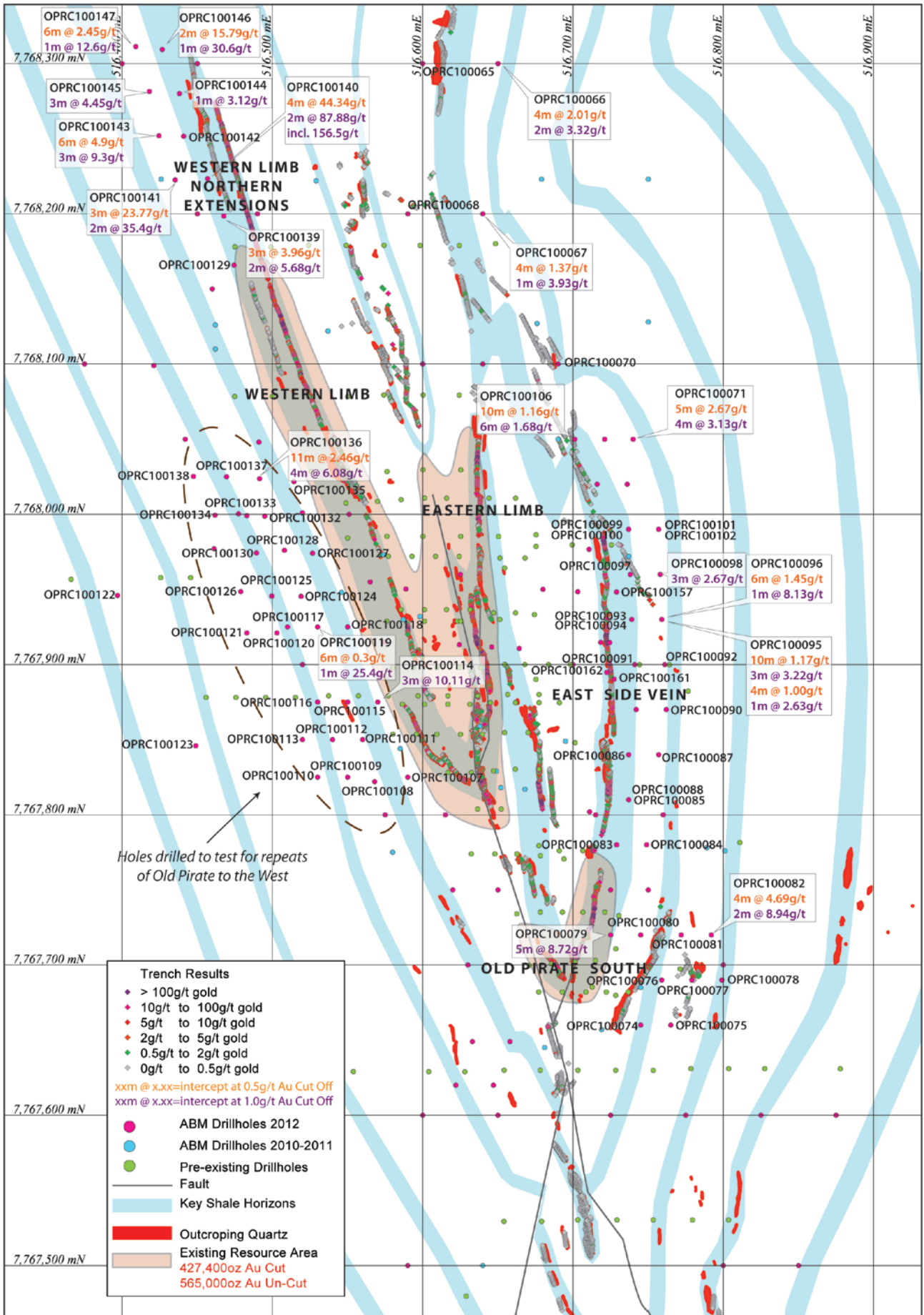


Figure 3 - Overall drill map at Old Pirate.

About ABM Resources

ABM Resources is an exploration company developing several gold discoveries in the Central Desert region of the Northern Territory of Australia. The Company has a multi-tiered approach to exploration and development with a combination of high grade potentially short-term production scenarios such as Old Pirate and the Golden Hind, large scale discoveries such as Buccaneer, and regional exploration discoveries such as the Kroda Gold Project. In addition, ABM Resources is committed to regional exploration programs throughout its extensive holdings.

ABM Resources is well capitalised to achieve its milestones in 2012 and into 2013 with \$23M in cash (as of quarterly report dated 30 June 2012).

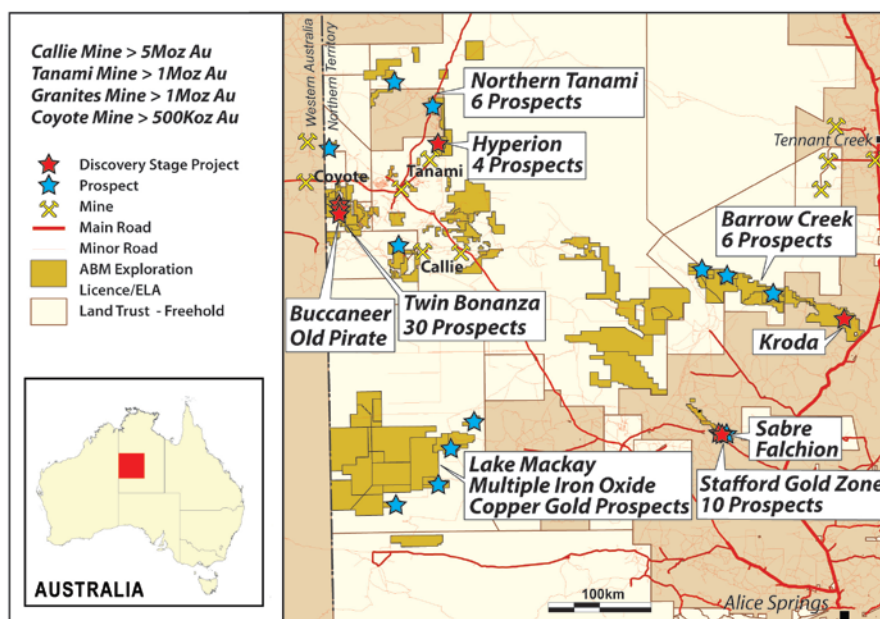


Figure 4 - ABM Project Location Map Northern Territory.

Signed

Darren Holden – Managing Director

Competent Persons Statement

The information in this report that relates to Exploration Results, Mineral Resources or Ore Reserves is based on information compiled by Mr Darren Holden who is a Member of The Australasian Institute of Mining and Metallurgy. Mr Holden is a full time employee of ABM Resources NL and has sufficient experience which is relevant to the style of mineralisation and type of deposit under consideration and to the activity which he is undertaking to qualify as a Competent Person as defined in the 2004 Edition of the "Australasian Code for Reporting Exploration Results, Mineral Resources and Ore Reserves". Mr Holden consents to the inclusion in the documents of the matters based on this information in the form and context in which it appears.

For Further Information Please Contact

Jutta Zimmermann
CFO / Company Secretary
+61 8 9423 9777

Darren Holden
Managing Director
+61 8 9423 9777

Berdine Mastaglia
Investor Relations Manager
+61 8 9423 9777

APPENDIX 1. Details of latest drill results from the Old Pirate Deposit.

Table 1.1. Significant intercepts for the Western Limb of Old Pirate drilling at 1.0g/t cut-off.

Hole ID	Depth From (m)	Depth To (m)	Interval (m)	Gold (g/t)	gram metres (g/t * metres)
OPRC100140	33	35	2	87.88	175.76
OPRC100141	73	75	2	35.40	70.80
OPRC100146	40	41	1	30.60	30.60
OPRC100114	84	87	3	10.11	30.33
OPRC100143	73	76	3	9.30	27.90
OPRC100119	169	170	1	25.40	25.40
OPRC100136	83	87	4	6.08	24.32
OPRC100145	70	73	3	4.45	13.35
OPRC100147	76	77	1	12.60	12.60
OPRC100139	35	37	2	5.68	11.36
OPRC100146	0	1	1	9.59	9.59
OPRC100137	121	124	3	2.02	6.06
OPRC100107	64	66	2	2.58	5.16
OPRC100108	119	124	5	0.97	4.85
OPRC100108	89	91	2	2.20	4.40
OPRC100109	150	151	1	3.75	3.75
OPRC100144	32	33	1	3.12	3.12
OPRC100112	144	145	1	2.97	2.97
OPRC100142	42	43	1	2.55	2.55
OPRC100129	35	36	1	2.37	2.37
OPRC100110	216	217	1	2.18	2.18
OPRC100129	53	54	1	2.18	2.18
OPRC100113	173	174	1	2.08	2.08
OPRC100142	47	48	1	2.08	2.08
OPRC100118	144	145	1	1.97	1.97
OPRC100140	93	94	1	1.96	1.96
OPRC100141	169	170	1	1.65	1.65
OPRC100143	51	52	1	1.58	1.58
OPRC100141	52	53	1	1.55	1.55
OPRC100145	160	161	1	1.55	1.55
OPRC100139	27	28	1	1.49	1.49
OPRC100109	161	162	1	1.37	1.37
OPRC100146	55	56	1	1.27	1.27
OPRC100126	243	244	1	1.22	1.22
OPRC100118	115	116	1	1.07	1.07
OPRC100115	118	119	1	1.05	1.05
OPRC100142	70	71	1	1.04	1.04
OPRC100110	207	208	1	1.03	1.03

Significant intercepts calculated for holes OPRC100107, OPRC100108, OPRC100109, OPRC100110, OPRC100112, OPRC100113, OPRC100114, OPRC100115, OPRC100118, OPRC100119, OPRC100126, OPRC100129, OPRC100136, OPRC100137, OPRC100139, OPRC100140, OPRC100141, OPRC100142, OPRC100143, OPRC100144, OPRC100145, OPRC100146 and OPRC100147 at a 1.0 g/t gold cut-off, minimum 1 metre width and maximum 2 metre internal dilution. Samples processed at ALS Global Laboratories in Alice Springs (NT) and Perth (WA) using Fire Assay for gold. Assays >1g/t are re-split and re-assayed 5 times with an average taken.

Table 1.2. Significant intercepts for the Northern Extension of the East Limb of Old Pirate drilling at 1.0g/t cut-off.

Hole ID	Depth From (m)	Depth To (m)	Interval (m)	Gold (g/t)	gram metres (g/t * metres)
OPRC100071	139	143	4	3.13	12.52
OPRC100106	98	104	6	1.68	10.08
OPRC100098	196	199	3	2.67	8.01
OPRC100066	81	83	2	3.32	6.64
OPRC100067	101	102	1	3.93	3.93
OPRC100070	78	80	2	1.96	3.92
OPRC100065	55	58	3	1.29	3.87
OPRC100067	68	69	1	2.04	2.04
OPRC100070	86	87	1	1.57	1.57
OPRC100068	91	92	1	1.55	1.55
OPRC100066	103	104	1	1.25	1.25
OPRC100068	0	1	1	1.01	1.01

Significant intercepts calculated for holes OPRC100065, OPRC100066, OPRC100067, OPRC100068, OPRC100070, OPRC100071, OPRC100098 and OPRC100106 at a 1.0 g/t gold cut-off, minimum 1 metre width and maximum 2 metre internal dilution. Samples processed at ALS Global Laboratories in Alice Springs (NT) and Perth (WA) using Fire Assay for gold. Assays >1g/t are re-split and re-assayed 5 times with an average taken.

Table 1.3. Significant intercepts for the Eastside Vein of Old Pirate drilling at 1.0g/t cut-off.

Hole ID	Depth From (m)	Depth To (m)	Interval (m)	Gold (g/t)	gram metres (g/t * metres)
OPRC100079	13	18	5	8.72	43.60
OPRC100082	74	76	2	8.94	17.88
OPRC100095	84	87	3	3.22	9.66
OPRC100096	42	43	1	8.13	8.13
OPRC100088	36	37	1	6.95	6.95
OPRC100080	29	30	1	5.54	5.54
OPRC100085	14	15	1	3.77	3.77
OPRC100095	104	108	4	0.74	2.96
OPRC100095	114	115	1	2.63	2.63
OPRC100097	114	115	1	1.50	1.50
OPRC100095	100	101	1	1.46	1.46
OPRC100078	85	86	1	1.29	1.29
OPRC100077	71	72	1	1.10	1.10
OPRC100098	134	135	1	1.02	1.02
OPRC100102	40	41	1	1.00	1.00

Significant intercepts calculated for holes OPRC100077, OPRC100078, OPRC100079, OPRC100080, OPRC100082, OPRC100085, OPRC100088, OPRC100095, OPRC100096, OPRC100097, OPRC100098 and OPRC100102 at a 1.0 g/t gold cut-off, minimum 1 metre width and maximum 2 metre internal dilution. Samples processed at ALS Global Laboratories in Alice Springs (NT) and Perth (WA) using Fire Assay for gold. Assays >1g/t are re-split and re-assayed 5 times with an average taken.

Table 1.4. Significant intercepts for the Western Limb of Old Pirate drilling at 0.5g/t cut-off.

Hole ID	Depth From (m)	Depth To (m)	Interval (m)	Gold (g/t)	gram metres (g/t * metres)
OPRC100140	33	37	4	44.34	177.36
OPRC100141	73	76	3	23.77	71.31
OPRC100146	39	41	2	15.79	31.58
OPRC100114	84	87	3	10.11	30.33
OPRC100143	73	79	6	4.90	29.40
OPRC100136	82	93	11	2.46	27.06
OPRC100147	73	79	6	2.45	14.70
OPRC100145	70	73	3	4.45	13.35
OPRC100139	35	38	3	3.96	11.88
OPRC100137	121	127	6	1.31	7.86
OPRC100107	64	67	3	1.90	5.70
OPRC100108	119	125	6	0.95	5.70
OPRC100108	89	93	4	1.40	5.60
OPRC100142	41	48	7	0.79	5.53
OPRC100140	82	94	12	0.39	4.68
OPRC100129	35	40	5	0.91	4.55
OPRC100115	112	120	8	0.45	3.60
OPRC100142	68	74	6	0.50	3.00
OPRC100143	51	53	2	1.22	2.44
OPRC100109	158	162	4	0.56	2.24
OPRC100144	162	165	3	0.62	1.86
OPRC100110	193	200	7	0.26	1.82
OPRC100119	115	121	6	0.30	1.80
OPRC100146	55	57	2	0.88	1.76
OPRC100139	2	7	5	0.31	1.55
OPRC100112	192	196	4	0.38	1.52
OPRC100117	158	160	2	0.63	1.26
OPRC100138	0	7	7	0.18	1.26

Significant intercepts calculated for holes OPRC100107, OPRC100108, OPRC100109, OPRC100110, OPRC100112, OPRC100114, OPRC100115, OPRC100117, OPRC100119, OPRC100129, OPRC100136, OPRC100137, OPRC100138, OPRC100139, OPRC100140, OPRC100141, OPRC100142, OPRC100143, OPRC100144, OPRC100145, OPRC100146 and OPRC100147 at a 0.5g/t gold cut-off, minimum 2 metre width and maximum 5 metre internal dilution. Samples processed at ALS Global Laboratories in Alice Springs (NT) and Perth (WA) using Fire Assay for gold. Assays >1g/t are re-split and re-assayed 5 times with an average taken.

Table 1.5. Significant intercepts for the Northern extension of the East Limb of Old Pirate drilling at 0.5g/t cut-off.

Hole ID	Depth From (m)	Depth To (m)	Interval (m)	Gold (g/t)	gram metres (g/t * metres)
OPRC100071	139	144	5	2.67	13.35
OPRC100106	94	104	10	1.16	11.60
OPRC100098	196	199	3	2.67	8.01
OPRC100070	75	91	16	0.56	8.96
OPRC100066	81	85	4	2.01	8.04
OPRC100067	99	103	4	1.37	5.48
OPRC100065	55	58	3	1.29	3.87
OPRC100071	109	113	4	0.57	2.28
OPRC100072	69	74	5	0.32	1.60
OPRC100067	89	91	2	0.60	1.20

Significant intercepts calculated for holes OPRC100065, OPRC100066, OPRC100067, OPRC100070, OPRC100071, OPRC100072, OPRC100098 and OPRC100106 at a 0.5g/t gold cut-off, minimum 2 metre width and maximum 5 metre internal dilution. Samples processed at ALS Global Laboratories in Alice Springs (NT) and Perth (WA) using Fire Assay for gold. Assays >1g/t are re-split and re-assayed 5 times with an average taken.

Table 1.6. Significant intercepts for the Eastside Vein of Old Pirate drilling at 0.5g/t cut-off.

Hole ID	Depth From (m)	Depth To (m)	Interval (m)	Gold (g/t)	gram metres (g/t * metres)
OPRC100079	13	18	5	8.72	43.60
OPRC100082	74	78	4	4.69	18.76
OPRC100095	84	94	10	1.17	11.70
OPRC100096	37	43	6	1.45	8.70
OPRC100095	100	108	8	0.65	5.20
OPRC100095	114	118	4	1.00	4.00
OPRC100097	108	115	7	0.47	3.29
OPRC100077	68	72	4	0.66	2.64
OPRC100099	55	57	2	0.95	1.90
OPRC100096	93	99	6	0.29	1.74
OPRC100098	133	135	2	0.80	1.60
OPRC100097	161	163	2	0.72	1.44

Significant intercepts calculated for holes OPRC100077, OPRC100079, OPRC100082, OPRC100095, OPRC100096, OPRC100097, OPRC100098 and OPRC100099 at a 0.5g/t gold cut-off, minimum 2 metre width and maximum 5 metre internal dilution. Samples processed at ALS Global Laboratories in Alice Springs (NT) and Perth (WA) using Fire Assay for gold. Assays >1g/t are re-split and re-assayed 5 times with an average taken.

Table 1.7. Maximum Assays for holes.

Hole ID	Prospect	Hole Type	Depth From (m)	Depth To (m)	Max Gold (g/t)
OPRC100140	Old Pirate Western Limb	RC	34	35	156.50
OPRC100141	Old Pirate Western Limb	RC	73	74	38.70
OPRC100146	Old Pirate Western Limb	RC	40	41	30.60
OPRC100114	Old Pirate Western Limb	RC	84	85	25.40
OPRC100119	Old Pirate Western Limb	RC	169	170	25.40
OPRC100079	Old Pirate Eastside Vein	RC	13	14	25.30
OPRC100082	Old Pirate South	RC	74	75	16.80
OPRC100143	Old Pirate Western Limb	RC	74	75	14.75
OPRC100136	Old Pirate Western Limb	RC	84	85	14.15
OPRC100147	Old Pirate Western Limb	RC	76	77	12.60
OPRC100145	Old Pirate Western Limb	RC	71	72	9.71
OPRC100139	Old Pirate Western Limb	RC	35	36	8.76
OPRC100096	Old Pirate Eastside Vein	RC	42	43	8.13
OPRC100071	Old Pirate Eastside Vein	RC	142	143	8.00
OPRC100088	Old Pirate Eastside Vein	RC	36	37	6.95
OPRC100095	Old Pirate Eastside Vein	RC	84	85	6.17
OPRC100080	Old Pirate Eastside Vein	RC	29	30	5.54
OPRC100137	Old Pirate Western Limb	RC	123	124	4.36
OPRC100106	Old Pirate Eastside Vein	RC	100	101	4.23
OPRC100066	Old Pirate East Limb	RC	82	83	4.06
OPRC100067	Old Pirate East Limb	RC	101	102	3.93
OPRC100107	Old Pirate Western Limb	RC	64	65	3.83
OPRC100085	Old Pirate Eastside Vein	RC	14	15	3.77
OPRC100109	Old Pirate Western Limb	RC	150	151	3.75
OPRC100098	Old Pirate Eastside Vein	RC	196	197	3.51
OPRC100144	Old Pirate Western Limb	RC	32	33	3.12
OPRC100112	Old Pirate Western Limb	RC	144	145	2.97
OPRC100108	Old Pirate Western Limb	RC	89	90	2.74
OPRC100142	Old Pirate Western Limb	RC	42	43	2.55
OPRC100129	Old Pirate Western Limb	RC	35	36	2.37
OPRC100110	Old Pirate Western Limb	RC	216	217	2.18
OPRC100113	Old Pirate Western Limb	RC	173	174	2.08
OPRC100070	Old Pirate Eastside Vein	RC	79	80	2.03
OPRC100118	Old Pirate Western Limb	RC	144	145	1.97
OPRC100065	Old Pirate East Limb	RC	55	56	1.86
OPRC100068	Old Pirate East Limb	RC	91	92	1.55
OPRC100097	Old Pirate Eastside Vein	RC	114	115	1.50
OPRC100078	Old Pirate South	RC	85	86	1.29
OPRC100126	Conceptual Target	RC	243	244	1.22
OPRC100077	Old Pirate South	RC	71	72	1.10
OPRC100115	Old Pirate Western Limb	RC	118	119	1.05
OPRC100102	Old Pirate Eastside Vein	RC	123	124	1.00
OPRC100099	Old Pirate Eastside Vein	RC	55	56	0.99

Hole ID	Prospect	Hole Type	Depth From (m)	Depth To (m)	Max Gold (g/t)
OPRC100120	Conceptual Target	RC	173	174	0.95
OPRC100117	Old Pirate Western Limb	RC	159	160	0.92
OPRC100123	Conceptual Target	RC	283	284	0.87
OPRC100173	Old Glory	RC	59	60	0.87
OPRC100090	Old Pirate Eastside Vein	RC	106	107	0.85
OPRC100169	Old Glory	RC	22	23	0.79
OPRC100101	Old Pirate Eastside Vein	RC	45	46	0.78
OPRC100121	Conceptual Target	RC	153	154	0.78
OPRC100148	Far North Old Pirate	RC	71	72	0.69
OPRC100087	Old Pirate Eastside Vein	RC	0	1	0.68
OPRC100116	Old Pirate Western Limb	RC	149	150	0.67
OPRC100083	Old Pirate Eastside Vein	RC	42	43	0.66
OPRC100138	Conceptual Target	RC	0	1	0.63
OPRC100149	Far North Old Pirate	RC	169	170	0.62
OPRC100111	Old Pirate Western Limb	RC	123	124	0.60
OPRC100084	Old Pirate Eastside Vein	RC	65	66	0.59
OPRC100125	Conceptual Target	RC	126	127	0.57
OPRC100086	Old Pirate Eastside Vein	RC	62	63	0.56
OPRC100134	Conceptual Target	RC	195	196	0.51
OPRC100122	Conceptual Target	RC	295	296	0.46
OPRC100075	Old Pirate South	RC	72	73	0.42
OPRC100124	Conceptual Target	RC	0	1	0.38
OPRC100093	Old Pirate Eastside Vein	RC	82	83	0.27
OPRC100076	Old Pirate South	RC	15	16	0.26
OPRC100074	Old Pirate South	RC	64	65	0.25
OPRC100081	Old Pirate South	RC	7	8	0.25
OPRC100092	Old Pirate Eastside Vein	RC	6	7	0.23
OPRC100150	Far North Old Pirate	RC	40	41	0.20
OPRC100094	Old Pirate Eastside Vein	RC	1	2	0.19
OPRC100100	Old Pirate Eastside Vein	RC	51	52	0.17
OPRC100133	Conceptual Target	RC	79	80	0.17
OPRC100168	Old Glory	RC	18	19	0.16
OPRC100127	Conceptual Target	RC	50	51	0.13
OPRC100157	Old Pirate Eastside Vein	RC	61	62	0.11
OPRC100135	Old Pirate Western Limb	RC	6	7	0.08
OPRC100161	Old Pirate Eastside Vein	RC	59	60	0.08
OPRC100162	Old Pirate Eastside Vein	RC	2	3	0.02
OPRC100091	Old Pirate Eastside Vein	RC	9	10	0.01

Appendix 2. Drill hole details for 2012 drilling to date at the Old Pirate Deposit.

Hole ID	Easting (m)	Northing (m)	Elevation above sea level	Inclination (degrees)	Azimuth (degrees)	Depth (metres)	Target Zone	Results Status
OPRC100029	516640	7767500	454	-60	90	258	Old Pirate South	Released
OPRC100030	516590	7767500	454	-60	90	350	Old Pirate South	Released
OPRC100031	516800	7767500	454	-60	270	250	Old Pirate South	Pending
OPRC100032	516850	7767500	454	-60	270	288	Old Pirate South	Released
OPRC100033	516650	7767600	454	-60	90	192	Old Pirate South	Released
OPRC100034	516600	7767600	454	-60	90	252	Old Pirate South	Released
OPRC100035	516725	7767600	454	-60	270	90	Old Pirate South	Released
OPRC100036	516775	7767600	454	-60	270	156	Old Pirate South	Released
OPRC100037	516825	7767600	454	-60	270	186	Old Pirate South	Released
OPRC100038	516875	7767600	454	-60	270	258	Old Pirate South	Released
OPRC100039	516800	7767700	454	-60	270	174	Old Pirate South	Released
OPRC100040	516650	7767750	454	-60	90	78	Old Pirate South	Released
OPRC100041	516620	7767750	454	-60	90	150	Old Pirate South	Released
OPRC100042	516630	7767700	454	-60	90	126	Old Pirate Eastside Vein	Released
OPRC100043	516725	7767750	454	-60	270	78	Old Pirate Eastside Vein	Released
OPRC100044	516750	7767750	454	-60	270	126	Old Pirate Eastside Vein	Released
OPRC100045	516575	7767800	454	-60	90	204	Old Pirate Western Limb	Released
OPRC100046	516615	7767800	454	-60	90	204	Old Pirate Western Limb	Released
OPRC100047	516715	7767800	454	-60	270	162	Old Pirate Eastern Limb	Released
OPRC100048	516760	7767800	454	-60	270	500	Old Pirate Eastside Vein	Released
OPRC100049	516700	7767900	454	-60	266.5	150	Old Pirate East Limb	Released
OPRC100050	516700	7767900	454	-60	86.5	150	Old Pirate Western Limb	Released
OPRC100051	516520	7767900	454	-60	86.5	252	Old Pirate Western Limb	Released
OPRC100052	516711	7767802	454	-60	266.5	180	Old Pirate East Limb	Released
OPRC100053	516551	7768000	454	-60	90	174	Old Pirate Western Limb	Released
OPRC100054	516520	7768001	454	-60	86.5	198	Old Pirate Western Limb	Released
OPRC100055	516491	7768048	454	-60	86.5	222	Old Pirate Western Limb	Released
OPRC100056	516442	7768050	454	-60	86.5	258	Conceptual Target	Released
OPRC100057	516483	7767999	454	-60	88.5	240	Old Pirate Western Limb	Released
OPRC100058	516421	7768099	454	-60	87	180	Conceptual Target	Released
OPRC100059	516375	7768100	454	-60	90	400	Conceptual Target	Pending
OPRC100060	516460	7768150	454	-60	86.5	198	Old Pirate Western Limb	Released
OPRC100061	516490	7768200	454	-60	86.5	162	Old Pirate Western Limb	Released
OPRC100062	516450	7768200	454	-60	86.5	250	Old Pirate Western Limb	Released

Hole ID	Easting (m)	Northing (m)	Elevation above sea level	Inclination (degrees)	Azimuth (degrees)	Depth (metres)	Target Zone	Results Status
OPRC100063	516450	7768300	454	-60	86.6	160	Old Pirate Western Limb	Released
OPRC100064	516400	7768300	454	-60	86.5	276	Old Pirate Western Limb	Released
OPRC100065	516600	7768300	454	-60	266.5	150	Old Pirate East Limb	Released
OPRC100066	516650	7768300	454	-60	266.5	300	Old Pirate East Limb	Released
OPRC100067	516640	7768200	454	-60	266.5	150	Old Pirate East Limb	Released
OPRC100068	516590	7768200	454	-60	266.5	102	Old Pirate East Limb	Released
OPRC100069	516600	7768100	454	-60	266.6	102	Old Pirate East Limb	Released
OPRC100070	516690	7768100	454	-60	266.5	228	Old Pirate Eastside Vein	Released
OPRC100071	516740	7768050	454	-60	266.5	306	Old Pirate Eastside Vein	Released
OPRC100072	516640	7768100	454	-60	266.5	174	Old Pirate East Limb	Released
OPRC100074	516745	7767660	452	-60	266.5	72	Old Pirate South	Released
OPRC100075	516765	7767660	452	-60	266.5	96	Old Pirate South	Released
OPRC100076	516759	7767690	452	-60	266.5	36	Old Pirate South	Released
OPRC100077	516779	7767690	452	-60	266.5	72	Old Pirate South	Released
OPRC100078	516799	7767690	452	-60	276.5	126	Old Pirate South	Released
OPRC100079	516725	7767720	452	-60	266.5	36	Old Pirate Eastside Vein	Released
OPRC100080	516745	7767720	452	-60	266.5	72	Old Pirate Eastside Vein	Released
OPRC100081	516772	7767720	452	-60	266.5	36	Old Pirate South	Released
OPRC100082	516792	7767720	452	-60	266.5	126	Old Pirate South	Released
OPRC100083	516729	7767780	452	-60	266.5	54	Old Pirate Eastside Vein	Released
OPRC100084	516749	7767780	452	-60	266.5	108	Old Pirate Eastside Vein	Released
OPRC100085	516737	7767810	452	-60	266.5	96	Old Pirate Eastside Vein	Released
OPRC100086	516737	7767840	452	-60	266.5	96	Old Pirate Eastside Vein	Released
OPRC100087	516757	7767840	452	-60	266.5	120	Old Pirate Eastside Vein	Released
OPRC100088	516757	7767810	452	-60	266.5	114	Old Pirate Eastside Vein	Released
OPRC100089	516742	7767870	452	-60	270	108	Old Pirate Eastside Vein	Pending
OPRC100090	516762	7767870	452	-60	270	108	Old Pirate Eastside Vein	Released
OPRC100091	516741	7767900	452	-60	270	42	Old Pirate Eastside Vein	Released
OPRC100092	516761	7767900	452	-60	270	72	Old Pirate Eastside Vein	Released
OPRC100093	516739	7767930	452	-60	266.5	96	Old Pirate Eastside Vein	Released
OPRC100094	516739	7767930	452	-60	266.5	60	Old Pirate Eastside Vein	Released
OPRC100095	516759	7767930	452	-60	266.5	198	Old Pirate Eastside Vein	Released

Hole ID	Easting (m)	Northing (m)	Elevation above sea level	Inclination (degrees)	Azimuth (degrees)	Depth (metres)	Target Zone	Results Status
OPRC100096	516759	7767930	452	-60	241.5	102	Old Pirate Eastside Vein	Released
OPRC100097	516738	7767960	452	-60	266.5	198	Old Pirate Eastside Vein	Released
OPRC100098	516758	7767960	452	-60	266.5	240	Old Pirate Eastside Vein	Released
OPRC100099	516737	7767990	452	-60	266.5	78	Old Pirate Eastside Vein	Released
OPRC100100	516737	7767990	452	-60	236.5	60	Old Pirate Eastside Vein	Released
OPRC100101	516757	7767990	452	-60	266.5	96	Old Pirate Eastside Vein	Released
OPRC100102	516757	7767990	452	-60	266.5	90	Old Pirate Eastside Vein	Released
OPRC100103	516716	7768020	452	-60	266.5	78	Old Pirate Eastside Vein	Pending
OPRC100104	516736	7768020	452	-60	266.5	90	Old Pirate Eastside Vein	Pending
OPRC100105	516701	7768050	452	-60	266.5	54	Old Pirate Eastside Vein	Pending
OPRC100106	516721	7768050	452	-60	266.5	198	Old Pirate Eastside Vein	Released
OPRC100107	516590	7767825	452	-60	86.5	72	Old Pirate Western Limb	Released
OPRC100108	516570	7767825	452	-60	86.5	150	Old Pirate Western Limb	Released
OPRC100109	516550	7767825	452	-60	86.5	180	Old Pirate Western Limb	Released
OPRC100110	516530	7767825	452	-60	86.5	252	Old Pirate Western Limb	Released
OPRC100111	516560	7767850	452	-60	86.5	90	Old Pirate Western Limb	Released
OPRC100112	516540	7767850	454	-60	86.5	222	Old Pirate Western Limb	Released
OPRC100113	516520	7767850	454	-60	86.5	216	Old Pirate Western Limb	Released
OPRC100114	516570	7767875	454	-60	86.5	120	Old Pirate Western Limb	Released
OPRC100115	516550	7767875	454	-60	86.5	150	Old Pirate Western Limb	Released
OPRC100116	516530	7767875	454	-60	86.5	180	Old Pirate Western Limb	Released
OPRC100117	516510	7767925	454	-60	86.5	210	Old Pirate Western Limb	Released
OPRC100118	516550	7767925	454	-60	86.5	150	Old Pirate Western Limb	Released
OPRC100119	516530	7767925	454	-60	86.5	180	Old Pirate Western Limb	Released
OPRC100120	516510	7767925	454	-60	86.5	210	Conceptual Target	Released
OPRC100121	516490	7767925	454	-60	86.5	300	Conceptual Target	Released
OPRC100122	516400	7767950	454	-60	86.5	342	Conceptual Target	Released
OPRC100123	516450	7767850	454	-60	86.5	348	Conceptual Target	Released
OPRC100124	516520	7767950	454	-60	86.5	72	Conceptual Target	Released
OPRC100125	516500	7767950	454	-60	86.5	180	Conceptual Target	Released
OPRC100126	516480	7767950	454	-60	86.5	270	Conceptual Target	Released
OPRC100127	516530	7767975	454	-60	86.5	60	Conceptual Target	Released
OPRC100128	516510	7767975	454	-60	86.5	78	Conceptual Target	Pending

Hole ID	Easting (m)	Northing (m)	Elevation above sea level	Inclination (degrees)	Azimuth (degrees)	Depth (metres)	Target Zone	Results Status
OPRC100129	516475	7768165	454	-60	86.5	240	Old Pirate Western Limb	Released
OPRC100130	516490	7767975	454	-60	86.5	108	Conceptual Target	Pending
OPRC100131	516470	7767975	454	-60	86.5	198	Conceptual Target	Pending
OPRC100132	516500	7768000	454	-60	86.5	90	Conceptual Target	Pending
OPRC100133	516480	7768000	454	-60	86.5	114	Conceptual Target	Released
OPRC100134	516460	7768000	454	-60	86.5	198	Conceptual Target	Released
OPRC100135	516510	7768025	454	-60	86.5	42	Old Pirate Western Limb	Released
OPRC100136	516490	7768025	454	-60	86.5	132	Old Pirate Western Limb	Released
OPRC100137	516470	7768025	454	-60	86.5	168	Old Pirate Western Limb	Released
OPRC100138	516450	7768025	454	-60	86.5	198	Conceptual Target	Released
OPRC100139	516466	7768195	454	-60	86.5	198	Old Pirate Western Limb	Released
OPRC100140	516456	7768225	454	-60	86.5	120	Old Pirate Western Limb	Released
OPRC100141	516436	7768225	454	-60	86.5	198	Old Pirate Western Limb	Released
OPRC100142	516447	7768255	454	-60	86.5	168	Old Pirate Western Limb	Released
OPRC100143	516427	7768255	454	-60	86.5	198	Old Pirate Western Limb	Released
OPRC100144	516439	7768285	454	-60	86.5	168	Old Pirate Western Limb	Released
OPRC100145	516419	7768285	454	-60	86.5	198	Old Pirate Western Limb	Released
OPRC100146	516430	7768315	454	-60	86.5	168	Old Pirate Western Limb	Released
OPRC100147	516410	7768315	454	-60	86.5	198	Old Pirate Western Limb	Released
OPRC100148	516430	7769030	454	-60	266.5	120	Far North Old Pirate	Released
OPRC100149	516475	7769030	454	-60	266.5	210	Far North Old Pirate	Released
OPRC100150	516300	7769030	454	-60	86.5	162	Far North Old Pirate	Released
OPRC100151	516250	7769030	454	-60	86.5	264	Far North Old Pirate	Pending
OPRC100152	516205	7769030	454	-60	86.5	366	Far North Old Pirate	Pending
OPRC100153	516145	7769030	454	-60	86.5	96	Far North Old Pirate	Pending
OPRC100154	516350	7769030	454	-60	86.5	90	Far North Old Pirate	Pending
OPRC100155	516680	7767950	454	-60	266.5	108	Old Pirate Resource Gaps	Pending
OPRC100156	516705	7767950	454	-60	266.5	102	Old Pirate Resource Gaps	Pending
OPRC100157	516730	7767950	454	-60	266.5	102	Old Pirate Eastside Vein	Released
OPRC100158	516717	7767982	454	-60	86.5	78	Old Pirate Eastside Vein	Pending
OPRC100159	516719	7767915	454	-60	86.5	24	Old Pirate Eastside Vein	Pending
OPRC100160	516723	7767913	454	-70	86.5	48	Old Pirate Eastside Vein	Pending
OPRC100161	516728	7767890	454	-70	86.5	60	Old Pirate Eastside Vein	Released

Hole ID	Easting (m)	Northing (m)	Elevation above sea level	Inclination (degrees)	Azimuth (degrees)	Depth (metres)	Target Zone	Results Status
OPRC100162	516723	7767893	454	-55	86.5	24	Old Pirate Eastside Vein	Released
OPRC100163	516590	7767950	454	-60	86.5	300	Old Pirate Resource Gaps	Pending
OPRC100164	516645	7767916	454	-60	266.5	60	Old Pirate Resource Gaps	Pending
OPRC100165	516660	7767916	454	-60	266.5	120	Old Pirate Resource Gaps	Pending
OPRC100166	516632	7767916	454	-60	86.5	60	Old Pirate Resource Gaps	Pending
OPRC100167	516655	7767180	454	-60	86.5	60	Old Glory	Pending
OPRC100168	516620	7767180	454	-60	86.5	60	Old Glory	Released
OPRC100169	516670	7767130	454	-60	86.5	60	Old Glory	Released
OPRC100170	516635	7767130	454	-60	86.5	60	Old Glory	Pending
OPRC100171	516597.4	7767129	454	-60	86.5	60	Old Glory	Pending
OPRC100172	516685	7767090	454	-60	86.5	60	Old Glory	Pending
OPRC100173	516650	7767090	454	-60	86.5	60	Old Glory	Released
OPRC100174	516625	7767960	454	-60	266.5	294	Old Pirate Resource Gaps	Pending
OPRC100175	516645	7767237	454	-60	326.5	60	Old Glory	Pending
OPRC100176	516643	7767214	454	-60	326.5	60	Old Glory	Pending
OPRC100177	516658	7767649	454	-60	86.5	90	Old Pirate South	Pending
OPRC100178	516633	7767649	454	-60	86.5	142	Old Pirate South	Pending
OPRC100179	516647	7767620	454	-60	86.5	132	Old Pirate South	Pending
OPRC100180	516622	7767620	454	-60	86.5	180	Old Pirate South	Pending
OPRC100181	516565	7767955	454	-60	86.5	120	Old Pirate Resource Gaps	Pending
OPRC100182	516575	7767915	454	-60	86.5	132	Old Pirate Resource Gaps	Pending
OPRC100183	516581	7767881	454	-60	86.5	150	Old Pirate Resource Gaps	Pending

Appendix 3

Table 3.1 Old Pirate Resource Estimation without utilising a top-cut. Refer release dated 16/04/2012 for further details.

All Vein Models	Tonnes	Gold (g/t)	Ounces
Indicated	347,000	5.31	59,200
Inferred	1,327,000	11.86	505,800
Total	1,673,000	10.50	565,000
High Grade Vein Models Only	Tonnes	Gold (g/t)	Ounces
Indicated	132,000	7.74	32,800
Inferred	354,000	22.64	257,600
Total	486,000	18.60	290,400

*Note - totals may vary due to rounding.

Table 3.2 Old Pirate Resource Estimation with utilising 300g/t top-cut. Refer release dated 16/04/2012 for further details.

All Vein Models	Tonnes	Gold (g/t)	Ounces
Indicated	347,000	5.25	58,500
Inferred	1,327,000	8.65	368,900
Total	1,673,000	7.95	427,400
High Grade Vein Models Only	Tonnes	Gold (g/t)	Ounces
Indicated	132,000	7.62	32,200
Inferred	354,000	17.52	199,400
Total	486,000	14.84	231,600

*Note - totals may vary due to rounding.