

2nd October, 2012

Golden Hind Prospect Returns Spectacular Drill Intersections:

***15 metres averaging 118.5g/t gold within
42 metres averaging 44g/t gold***

ABM Resources NL ("ABM" or "The Company") is pleased to announce the second round of drill results from the Golden Hind Prospect. Golden Hind is located 800 metres south of the Old Pirate Gold Deposit on the Company's Twin Bonanza Gold Camp Project in the Northern Territory of Australia.

Golden Hind Drill Result Highlights:

- Drill Hole GHRC100014 intersected:
 - 42 metres averaging 44.02g/t gold (0.5g/t cut-off) from surface including:
 - 15 metres averaging 118.5g/t gold (1.0g/t cut-off) with the main high grade vein included in this section returning 3 metres averaging 546g/t gold.
 - Panning recovers approximately 12g of gold from 15kg of material suggesting coarse gold grade is under-called at the laboratory.
- Drill Hole GHRC100024 intersected:
 - 20 metres averaging 10.59g/t gold (0.5g/t cut-off) from 13 metres depth including:
 - 11 metres averaging 18.4g/t gold (1.0g/t cut-off)
- Drill Hole GHRC100021 intersected:
 - 21 metres averaging 9.52g/t gold (0.5g/t cut-off) from 11 metres depth including:
 - 15 metres averaging 13.2g/t gold (1.0g/t cut-off)
- Diamond Core drilling underway.

Darren Holden, Managing Director, said, "GHRC100014 represents the best grade / width intersection ever on the Twin Bonanza Gold Camp Project. The Golden Hind Prospect, located only 800 metres south of the Old Pirate Deposit, is a potential second high grade open pit for an integrated operation at Old Pirate."

Golden Hind Prospect

The Golden Hind Prospect is located approximately 800 metres south of the Company's Old Pirate High Grade Gold Deposit. The prospect consists of single high grade vein with other peripheral gold bearing quartz veins hosted by sandstone and shale. Veins are interpreted to dip steeply to the south-west. High grade mineralisation is currently interpreted to plunge approximately 35 degrees to the south within steeply dipping veins. The latest round of results completes the initial 29 reverse circulation drill hole program at the Golden Hind. All results are shown on Figures 2 and 3 as well as Appendix 1.

Drill hole GHRC100014, in particular, intersected the widest high grade intersection drilled to date on the project. The main high grade vein was intersected at 16 metres depth and averaged 546g/t gold over 3 metre width within a zone of 15 metres averaging 118.5g/t gold. Either side of this vein are other high grade structures. ABM personnel proceeded to take the remnant RC samples on site and pan gold from this 3 metre section. A total of 12 grams of gold was panned from 15 kilograms of material which would indicate a grade of approximately 800g/t with individual gold grains up to 5mm. When gold is so coarse it is difficult for laboratories to estimate the total assay and the laboratory reported this to the Company. Based on the panned sample it would suggest that the assays are under-calling total gold content.



Figure 1. A total of 12 grams of gold panned from 15kg of material from hole GHRC100014 indicating a grade of at least 800g/t gold with the laboratory assays likely under-calling the overall grade.

Gold at the Golden Hind Prospect is contained in quartz veins and quartz vein breccia. At surface high grade gold is confirmed over a strike length of 60 metres within a south west dipping vein. These latest results indicate that the high grade zone is plunging shallowly to the south (Figure 2).

ABM has commenced diamond drilling with holes pending assay. Diamond hole GHDD100001 was drilled as a twin of hole GHRC100014 and revealed visible gold in quartz. Hole GHDD100002 was drilled to the north of the main high grade area to get a view of stratigraphy outside of the main ore-zone. Holes GHDD100003 and GHDD100004 were drilled to test down plunge continuations of the high

grade structure. These holes intersected 6 metres and 9 metres of quartz vein and quartz vein breccia respectively (Figure 3) and are pending assay.

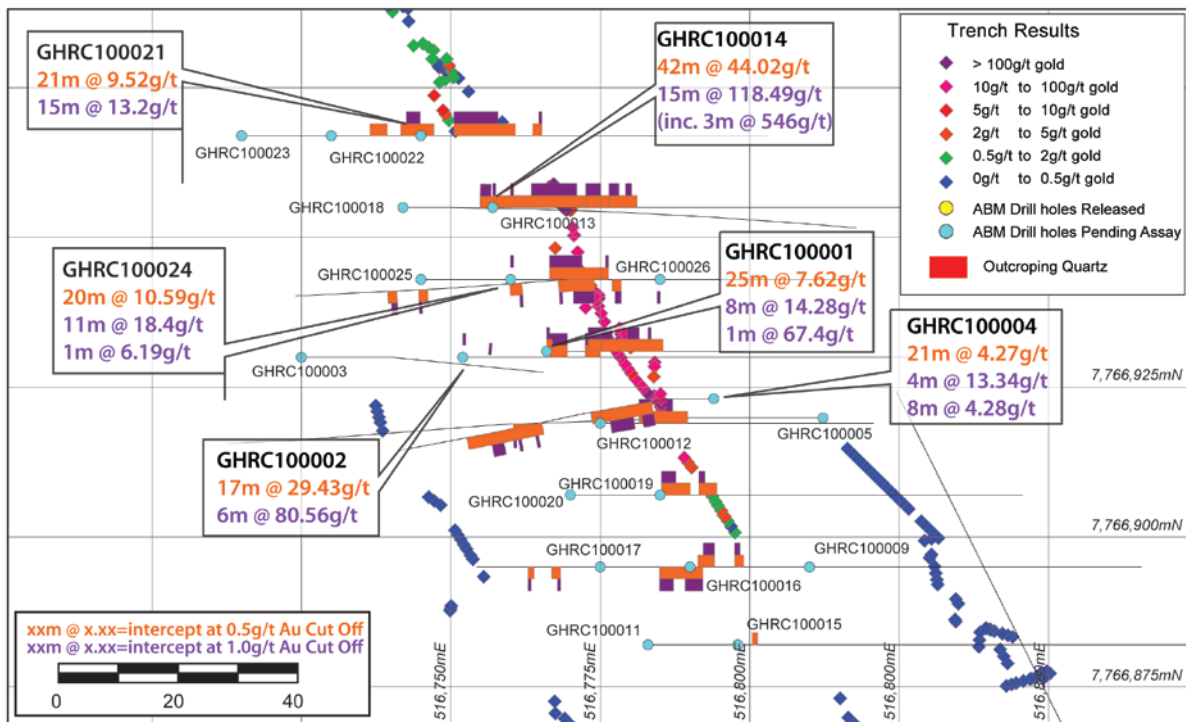


Figure 2. Map View of the Golden Hind Prospect with select intersections labelled.

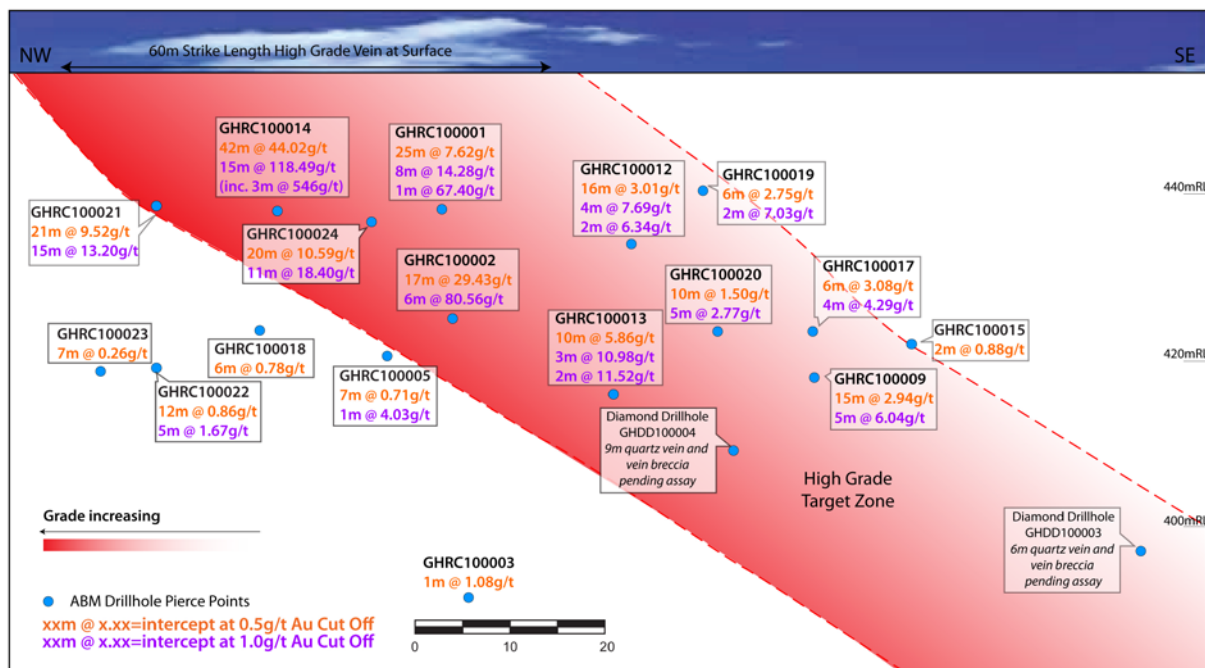


Figure 3. Long-section (view towards east) through Golden Hind prospect showing pierce points of where drilling intersects the main gold bearing vein structure. Mineralisation extends either side of the main high grade structure. Holes drilled from the footwall not shown.

Next Steps

Extensional drilling is on-going at both the Old Pirate and the Golden Hind Prospects. Further results are expected to be compiled and reported shortly. Upon completion of drilling and subsequent work ABM intends to issue an updated resource statement.

About the Old Pirate High Grade Gold Deposit

The Old Pirate Gold Deposit is a high grade system with current resources of 427,000 ounces of gold averaging 7.95g/t gold (top cut) or 565,000 ounces averaging 10.95g/t gold (uncut) (refer appendix 3). Gold bearing quartz veins range from a few centimetres to over 4 metres in width and extend over an area approximately 800 metres by 200 metres. Quartz veins are hosted in a folded interlayered sandstone / shale sequence.

About ABM Resources

ABM Resources is an exploration company developing several gold discoveries in the Tanami-Arunta region of the Northern Territory of Australia. The Company has a multi-tiered approach to exploration and development with a combination of high grade potentially short-term production scenarios such as Old Pirate, large scale discoveries such as Buccaneer, and regional exploration discoveries such as the Kroda Gold Project. In addition, ABM Resources is committed to regional exploration programs throughout its extensive holdings.

ABM Resources is well capitalised to achieve its milestones in 2012 and into 2013 with \$23M in cash (as of quarterly report dated 30 June 2012).

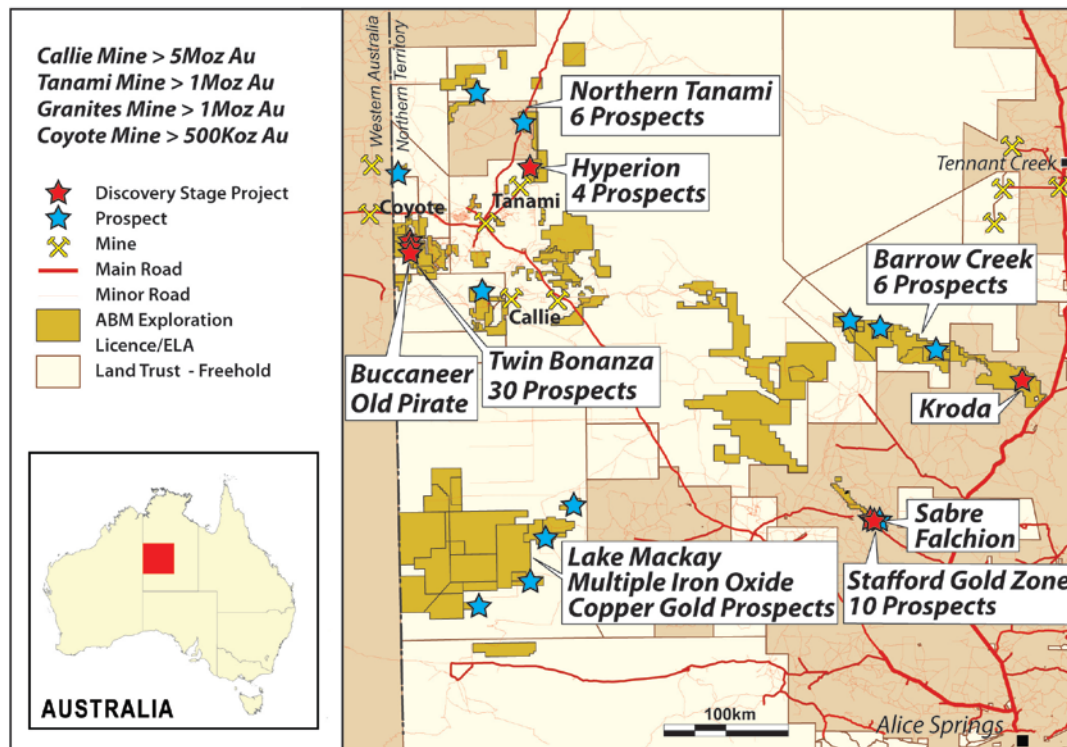


Figure 4. ABM Project Location Map Northern Territory.

Signed

Darren Holden – Managing Director

Competent Persons Statement

The information in this report that relates to Exploration Results, Mineral Resources or Ore Reserves is based on information compiled by Mr Darren Holden who is a Member of The Australasian Institute of Mining and Metallurgy. Mr Holden is a full time employee of ABM Resources NL and has sufficient experience which is relevant to the style of mineralisation and type of deposit under consideration and to the activity which he is undertaking to qualify as a Competent Person as defined in the 2004 Edition of the "Australasian Code for Reporting Exploration Results, Mineral Resources and Ore Reserves". Mr Holden consents to the inclusion in the documents of the matters based on this information in the form and context in which it appears.

For Further Information Please Contact

Jutta Zimmermann
CFO / Company Secretary
+61 8 9423 9777

Darren Holden
Managing Director
+61 8 9423 9777

Berdine Mastaglia
Investor Relations Manager
+61 8 9423 9777

APPENDIX 1. Details of 2012 drill results from the Golden Hind Prospect.

Table 1.1. Significant intercepts for phases 1 and 2 of Golden Hind Drilling at 0.5g/t cut-off

Hole ID	Depth From (m)	Depth To (m)	Interval (m)	Gold (g/t)	gram metres (g/t * metres)
GHRC100014	0	42	42	44.02	1848.88
GHRC100002	29	46	17	29.43	500.31
GHRC100024	13	33	20	10.59	211.80
GHRC100021	11	32	21	9.52	199.92
GHRC100001	14	39	25	7.62	190.50
GHRC100004	21	42	21	4.27	89.67
GHRC100013	41	51	10	5.86	58.60
GHRC100012	13	29	16	3.01	48.16
GHRC100009	36	51	15	2.94	44.10
GHRC100017	34	40	6	3.08	18.48
GHRC100019	13	19	6	2.75	16.50
GHRC100002	41	46	5	3.26	16.30
GHRC100004	59	85	26	0.59	15.34
GHRC100020	31	41	10	1.50	15.00
GHRC100026	13	16	3	4.93	14.79
GHRC100026	22	34	12	1.06	12.72
GHRC100022	24	36	12	0.86	10.32
GHRC100026	87	90	3	3.16	9.48
GHRC100027	13	18	5	1.44	7.20
GHRC100001	0	2	2	2.80	5.60
GHRC100005	94	101	7	0.71	4.97
GHRC100018	27	33	6	0.78	4.68
GHRC100026	46	50	4	1.16	4.64
GHRC100029	57	63	6	0.68	4.08
GHRC100021	38	41	3	1.20	3.60
GHRC100008	38	42	4	0.85	3.40
GHRC100009	86	89	3	1.07	3.21
GHRC100026	77	80	3	1.06	3.18
GHRC100016	15	18	3	0.82	2.46
GHRC100009	95	97	2	1.12	2.24
GHRC100023	47	54	7	0.26	1.82
GHRC100006	42	47	5	0.36	1.80
GHRC100015	36	38	2	0.88	1.76
GHRC100013	31	33	2	0.87	1.74

Significant intercepts calculated for holes GHRC100001 to GHRC100029 at a 0.5g/t gold cut-off, minimum 2 metre width and maximum 5 metre internal dilution. Samples processed at ALS Global Laboratories in Alice Springs (NT) and Perth (WA) using Fire Assay for gold. Assays >1g/t are resplit and reassayed 5 times with an average taken.

Table 1.2. Significant intercepts for holes GHRC100001 to GHRC100005 at 1.0g/t cut-off.

Hole ID	Depth From (m)	Depth To (m)	Interval (m)	Gold (g/t)	gram metres (g/t * metres)
GHRC100014	13	28	15	118.49	1777.35
GHRC100002	29	35	6	80.56	483.36
GHRC100024	13	24	11	18.40	202.40
GHRC100021	11	26	15	13.20	198.00
GHRC100001	14	22	8	14.28	114.24
GHRC100001	34	35	1	67.40	67.40
GHRC100004	21	25	4	13.34	53.36
GHRC100013	41	44	3	10.98	32.94
GHRC100012	13	17	4	7.69	30.76
GHRC100009	46	51	5	6.04	30.20
GHRC100004	28	36	8	4.28	34.24
GHRC100013	47	49	2	11.52	23.04
GHRC100026	0	1	1	22.40	22.40
GHRC100014	31	36	5	3.78	18.90
GHRC100017	36	40	4	4.29	17.16
GHRC100002	41	46	5	3.26	16.30
GHRC100026	13	15	2	7.11	14.22
GHRC100019	13	15	2	7.03	14.06
GHRC100020	31	36	5	2.77	13.85
GHRC100012	22	24	2	6.34	12.68
GHRC100009	36	42	6	1.96	11.76
GHRC100026	22	29	7	1.41	9.87
GHRC100026	87	89	2	4.24	8.48
GHRC100022	26	31	5	1.67	8.35
GHRC100024	32	33	1	6.19	6.19
GHRC100004	73	77	4	1.47	5.88
GHRC100001	27	31	4	1.43	5.72
GHRC100027	13	15	2	2.64	5.28
GHRC100024	0	1	1	4.77	4.77
GHRC100001	0	1	1	4.63	4.63
GHRC100005	100	101	1	4.03	4.03
GHRC100014	6	7	1	3.93	3.93
GHRC100002	0	1	1	3.45	3.45
GHRC100018	27	31	4	0.83	3.32
GHRC100026	46	47	1	3.19	3.19
GHRC100006	32	33	1	3.04	3.04
GHRC100021	40	41	1	2.97	2.97
GHRC100008	38	39	1	2.64	2.64

Hole ID	Depth From (m)	Depth To (m)	Interval (m)	Gold (g/t)	gram metres (g/t * metres)
GHRC100004	61	62	1	2.56	2.56
GHRC100027	27	28	1	2.31	2.31
GHRC100009	86	87	1	2.21	2.21
GHRC100014	0	1	1	2.08	2.08
GHRC100017	48	49	1	1.77	1.77
GHRC100026	79	80	1	1.66	1.66
GHRC100016	15	16	1	1.58	1.58
GHRC100009	96	97	1	1.47	1.47
GHRC100013	0	1	1	1.45	1.45
GHRC100026	33	34	1	1.38	1.38
GHRC100004	67	68	1	1.30	1.30
GHRC100014	41	42	1	1.16	1.16
GHRC100003	68	69	1	1.08	1.08

Significant intercepts calculated for holes GHRC100001 to GHRC100029 at a 1.0 g/t gold cut-off, minimum 1 metre width and maximum 2 metre internal dilution. Samples processed at ALS Global Laboratories in Alice Springs (NT) and Perth (WA) using Fire Assay for gold. Assays >1g/t are resplit and reassayed 5 times with an average taken.

Table 1.3. Maximum Assays for holes which did not intersect high grade structure or included in above tables; GHRC100010, GHRC100011, GHRC100025, and GHRC100028.

Hole ID	Prospect	Hole Type	Depth From (m)	Depth To (m)	Max Gold (g/t)
GHRC100010	Golden Hind	RC	208	209	0.69
GHRC100011	Golden Hind	RC	12	13	0.06
GHRC100025	Golden Hind	RC	25	26	0.99
GHRC100028	Golden Hind	RC	42	43	0.68

Appendix 2. Drill hole details for 2012 drilling to date at the Golden Hind Prospect.

Hole ID	Prospect	Easting (m)	Northing (m)	Elevation above sea level	Inclination (degrees)	Azimuth (degrees)	Depth (metres)	Results Status
GHRC100001	Golden Hind	516766	7766931	454	-60	86.5	66	Released
GHRC100002	Golden Hind	516752	7766930	454	-60	86.5	150	Released
GHRC100003	Golden Hind	516725	7766930	454	-60	86.5	90	Released
GHRC100004	Golden Hind	516794	7766923	447	-60	266.5	108	Released
GHRC100005	Golden Hind	516812	7766920	447	-60	266.5	180	Released
GHRC100006	Golden Hind	516748	7766994	447	-60	266.5	180	Released
GHRC100007	Golden Hind	516700	7767050	447	-60	266.5	108	Released
GHRC100008	Golden Hind	516723	7767052	447	-60	266.5	180	Released
GHRC100009	Golden Hind	516811	7766890	447	-60	266.5	114	Released
GHRC100010	Golden Hind	516877	7766810	447	-60	330	282	Released
GHRC100011	Golden Hind	516795	7766881	447	-60	86.5	90	Released
GHRC100012	Golden Hind	516776	7766911	447	-60	86.5	90	Released
GHRC100013	Golden Hind	516761	7766913	447	-60	86.5	156	Released
GHRC100014	Golden Hind	516756	7766948	447	-60	86.5	90	Released
GHRC100015	Golden Hind	516779	7766882	447	-60	86.5	180	Released
GHRC100016	Golden Hind	516786	7766891	447	-60	86.5	90	Released
GHRC100017	Golden Hind	516770	7766892	447	-60	86.5	180	Released
GHRC100018	Golden Hind	516741	7766950	447	-60	86.5	150	Released
GHRC100019	Golden Hind	516782	7766903	447	-60	86.5	90	Released
GHRC100020	Golden Hind	516769	7766902	447	-60	86.5	150	Released
GHRC100021	Golden Hind	516750	7766961	447	-60	86.5	90	Released
GHRC100022	Golden Hind	516735	7766961	447	-60	86.5	150	Released
GHRC100023	Golden Hind	516719	7766962	447	-60	86.5	150	Released
GHRC100024	Golden Hind	516761	7766937	447	-60	86.5	90	Released
GHRC100025	Golden Hind	516746	7766938	447	-60	86.5	150	Released
GHRC100026	Golden Hind	516783	7766940	447	-60	266.5	120	Released*
GHRC100027	Golden Hind	516717	7767001	447	-60	86.5	90	Released
GHRC100028	Golden Hind	516702	7767001	447	-60	86.5	180	Released
GHRC100029	Golden Hind	516749	7767000	447	-60	86.5	180	Released*
GHDD100001	Golden Hind	516760	7766945	447	-60	86.5	56	Pending
GHDD100002	Golden Hind	516745	7766974	447	-60	86.5	49.3	Pending
GHDD100003	Golden Hind	516770	7766857	447	-60	86.5	105.3	Pending
GHDD100004	Golden Hind	516745	7766904	447	-60	86.5	77.2	Pending

*Holes GHRC100026 and GHRC100029 are preliminary results only and are pending finalisation at the laboratory. These results are not expected to materially change.
GHRC = Reverse Circulation Hole; GHDD = Diamond Core Hole

Appendix 3

Table 3.1 Old Pirate Resource Estimation without utilising a top-cut. Refer release dated 16/04/2012 for further details.

All Vein Models	Tonnes	Gold (g/t)	Ounces
Indicated	347,000	5.31	59,200
Inferred	1,327,000	11.86	505,800
Total	1,673,000	10.50	565,000
High Grade Vein Models Only	Tonnes	Gold (g/t)	Ounces
Indicated	132,000	7.74	32,800
Inferred	354,000	22.64	257,600
Total	486,000	18.60	290,400

*Note - totals may vary due to rounding.

Table 3.2 Old Pirate Resource Estimation with utilising 300g/t top-cut. Refer release dated 16/04/2012 for further details.

All Vein Models	Tonnes	Gold (g/t)	Ounces
Indicated	347,000	5.25	58,500
Inferred	1,327,000	8.65	368,900
Total	1,673,000	7.95	427,400
High Grade Vein Models Only	Tonnes	Gold (g/t)	Ounces
Indicated	132,000	7.62	32,200
Inferred	354,000	17.52	199,400
Total	486,000	14.84	231,600

*Note - totals may vary due to rounding.