

6th August, 2012

High Grade Gold in First Results from the Golden Hind Discovery

Systematic Longitudinal Surface Sampling yields 60 metre strike length averaging 103.23g/t gold

ABM Resources NL ("ABM" or "The Company") is pleased to announce the first systematic surface sampling results for gold at The Golden Hind Prospect located 800 metres south of the Company's Old Pirate High Grade Gold deposit. Golden Hind is part of the Company's Twin Bonanza Gold Camp Project in the Northern Territory of Australia.

Highlights from the Golden Hind Prospect:

- Multiple sub-parallel veins up to 2 metres wide.
- 200 metre mineralised strike length with samples averaging 29.57g/t in longitudinal surface sampling with a high grade section of:
 - 60 metres strike length with samples averaging 103.23g/t gold.
- Peak assay result of 784g/t gold.
- Further surface sampling results pending.
- Drilling to commence at the Golden Hind Prospect shortly.

Darren Holden, Managing Director of ABM Resources, said "The discovery of a second high grade gold deposit less than a kilometre from Old Pirate is an excellent outcome. Overall the spectacular grades from the Golden Hind are some of the highest we have ever seen from the systematic surface sampling and we look forward to mobilising the drill rig on to this new gold prospect."

The Golden Hind Prospect

Following on from the success of the 2011 surface sampling program, ABM has continued the approach of exposing and systematically sampling near-surface and outcropping veins. So far, in 2012, the Company has collected over 3000 samples of new vein material, most of which are outside the existing resource. A detailed description of the sampling process is provided in this release.

The Golden Hind Prospect consists of a series of outcropping veins ranging from 2 metres to 30cm in width. The vein array has been mapped over a strike length of approximately 400 metres and continues under shallow cover to the northwest and southeast. Approximately 200 metres of the vein array is confirmed to be mineralised, within which a very high-grade section of 60 metres averages 103.23g/t gold (Figure 1). There are further assay results and extensions to the Golden Hind Prospect pending sampling and assay. A drill rig is scheduled to test the Prospect with an initial 10 to 15 hole program shortly.

Table 1. Statistics from sampling of the mineralised portion of the Golden Hind Prospect	
Total number of samples (including duplicates)	332
Total strike length (including projections under shallow cover not sampled)	200m
Total surface area of quartz sampled	72.08 sq m
Average vein width	0.45 metres
Maximum individual value	784 g/t gold
Number of samples >100g/t gold	25 averaging 265.5g/t gold
Number of samples >10g/t gold	73 averaging 111g/t gold
Average of all assays (including duplicates)	25.34 g/t gold
Weighted average of all assays (by width of vein)	29.57 g/t gold

Table 2. Statistics from the sampling of the high-grade central Golden Hind Prospect Zone	
Total number of samples (including duplicates)	94
Total strike length (including projections under shallow cover not sampled)	60m
Total surface area of quartz sampled	20.20 sq m
Average vein width	0.46 metres
Maximum individual value	784 g/t gold
Number of samples >100g/t gold	25 averaging 265.5g/t gold
Number of samples >10g/t gold	69 averaging 116.4g/t gold
Average of all assays (including duplicates)	86.68 g/t gold
Weighted average of all assays (by width of vein)	103.23 g/t gold

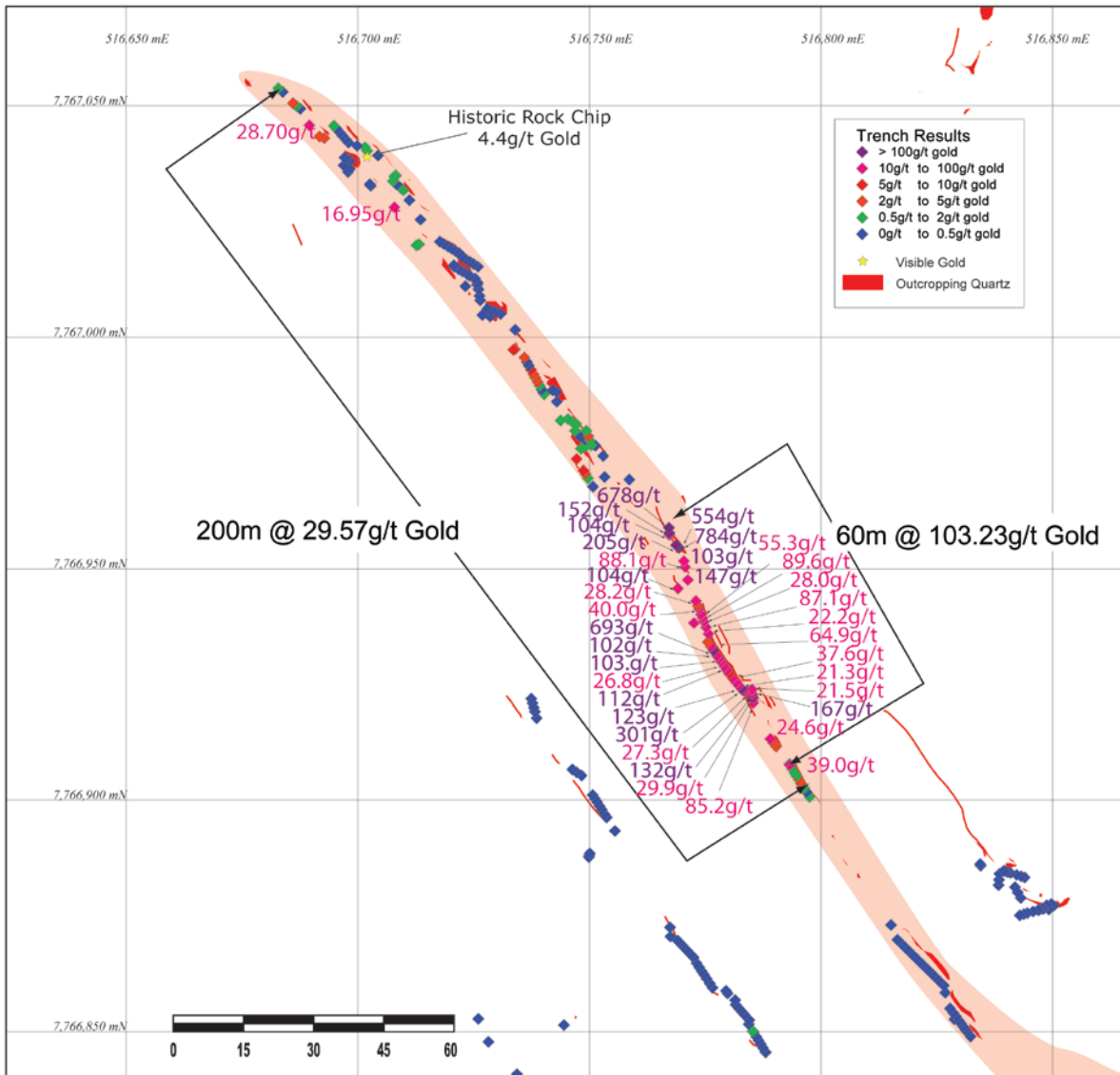


Figure 1 Golden Hind - Map of Surface Sampling Results

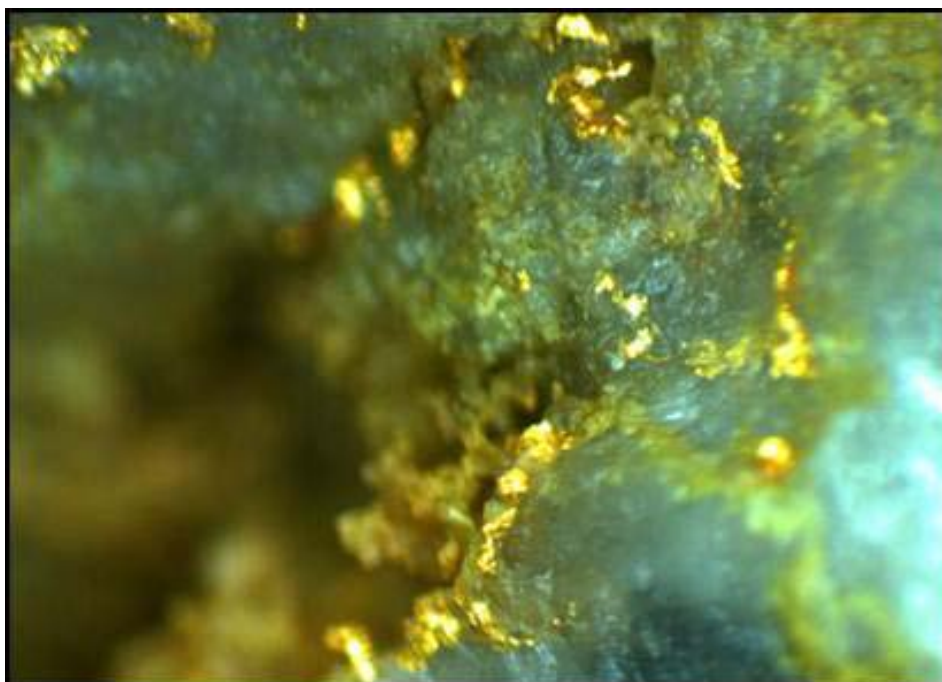


Figure 2. Coarse Visible Gold in quartz at Golden Hind. Field of view approximately 0.8cm

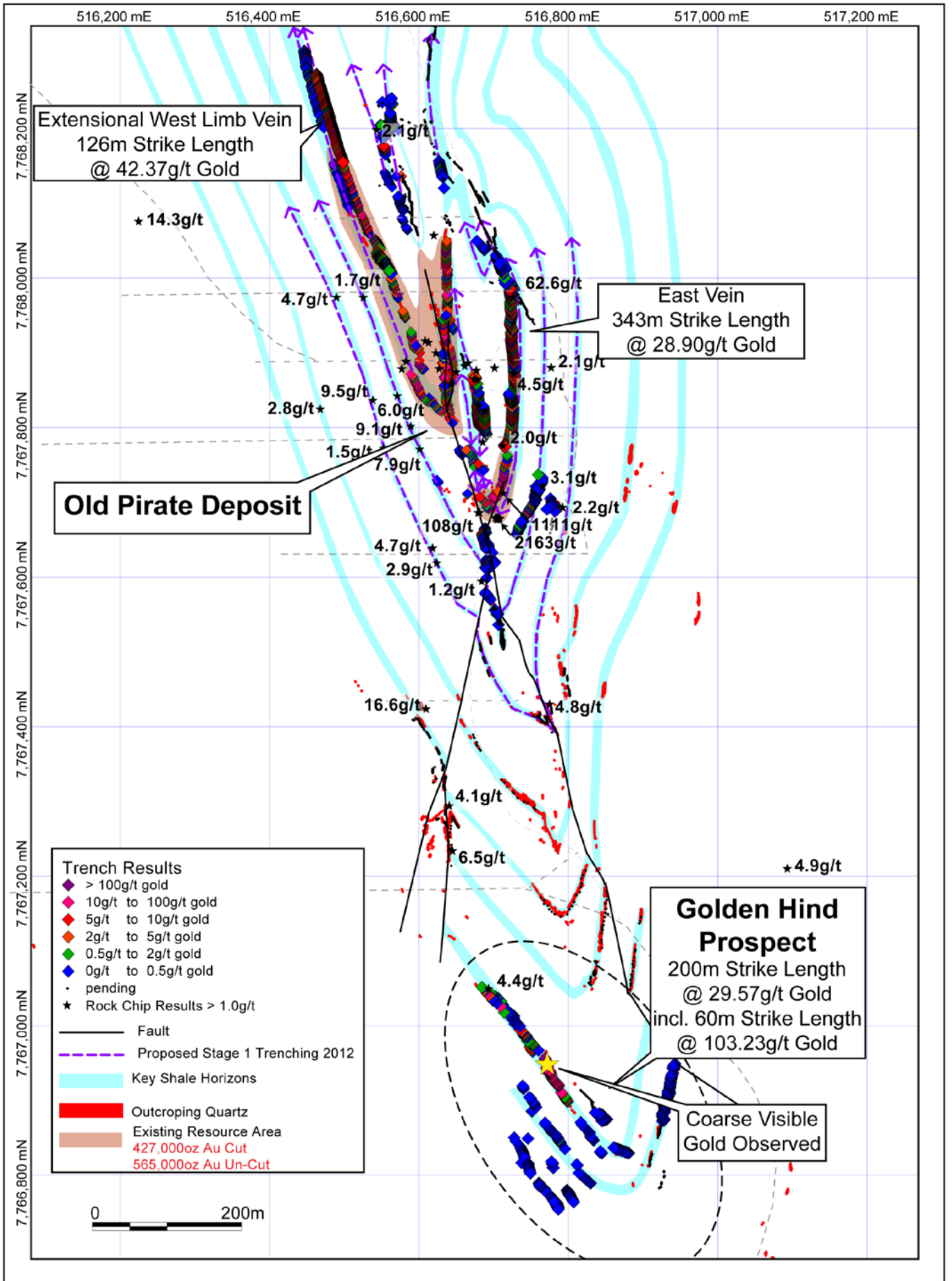


Figure 3. Golden Hind in relation to Old Pirate Deposit

Extensional Discoveries, Implications for Resource Development and Next Steps

ABM has been exploring Old Pirate since 2010. However, it was the innovation of using systematic surface sampling in mid 2011 that allowed the Company to better understand the coarse gold and statistical nugget effect. In April 2012 the Company announced a maiden inferred and indicated resource totalling 565,000 ounces of gold averaging 10.65g/t gold uncut at Old Pirate (refer Appendix 1).

In May 2012 the Company announced an initial independent scoping study based on a preliminary open pit mine design and the installation of a small scale gravity gold recovery plant. This scoping study showed the potential for low capital expenditure of \$27M and strong cash flows of over \$250M after costs over two years. With the surface sampling and drilling work underway ABM is assessing the overall scale of the Old Pirate system in order to update the resource estimation work and the scoping study in the near future.

Furthermore, Old Pirate sits on the same exploration license as the large scale / bulk tonnage Buccaneer Porphyry Gold Deposit. The Company is currently assessing whether there are processing and development synergies between the two deposits.

Upon assessment of the overall scale and completion of requisite studies over the Old Pirate project area, which includes base line flora / fauna surveys, the Company will be in a position to apply for a mineral lease.

Surface Vein Sampling Rationale and Sampling Method

Gold in the Old Pirate and Golden Hind area can be coarse (up to 2 to 3mm grains) and is hosted within quartz veins. However, the distribution of the gold within these veins is not uniform, and hence drilling will likely under-call the overall grade due to the fact that there is a less than 1 in 4 chance of intersecting high grade in any particular part of the vein. Upon advice from external consultants, rigorous and systematic sampling of the quartz along the strike length of veins at Old Pirate and extensions was proposed. Over 700m of sampling was conducted in 2011 and combined with drilling to estimate the gold resources at Old Pirate (16/04/2012). ABM has recommenced the program in 2012 of which the on-going work is presented here. This information, along with statistical parameters and extents of mineralisation, will be used to aid with further drilling and resource work.

The process for the surface sampling program is:

1. Natural outcropping veins are mapped for location and width and sampled at 1 metre strike length intervals.
2. A small digger then exposes those parts of the veins that are hidden underneath shallow soil cover to provide a combined map of natural outcrop and exposed quartz vein.
3. For each metre of exposed quartz vein (both in natural outcrop and cleared veins) two representative samples of approximately 4 to 10kg are collected. Quartz is selected systematically in a grid pattern so as not to bias individual samples. Both samples are sent to the laboratory.
4. The sample width depends on the width of the vein or exposed areas. In cases where the vein width is generally greater than 1 metre, multiple samples may be collected across the vein.
5. The maximum depth of the digging is 60cm (due to permit regulations, safety considerations and to minimise environmental impact). If the soil cover is greater than 60cm then sampling does not take place despite the likelihood of the vein continuing beneath 60cm.

6. Samples are processed by ALS Global in Alice Springs (NT), and ALS Global in Perth (WA) where they are weighed and analysed using regular fire assay (AA26D). Samples greater than 100g/t are re-assayed using AA26D / Over Limit Dilution method.
7. Overall statistics and spatial distribution for vein strike length and grade are calculated by measuring sampled portions of vein (including a projection of short lengths (<10 metres) where the vein is inferred to have extended under cover) and then averaging all of the samples along the length. Individual entire veins that are un-mineralised (<1g/t) are excluded from overall statistics.
8. Samples are surveyed with a hand-held GPS using waypoint averaging for ~20cm spatial accuracy.
9. Surface samples are weighted for sample width prior to being used in any resource estimation work.



Figure 4. Gridded and sampled vein (pink lines represent grid boundaries of vein samples) at Golden Hind.

About ABM Resources

ABM Resources is an exploration company developing several gold discoveries in the Tanami-Arunta region of the Northern Territory of Australia. The Company has a multi-tiered approach to exploration and development with a combination of high grade potentially short-term production scenarios such as Old Pirate, large scale discoveries such as Buccaneer, and regional exploration discoveries such as the Kroda Gold Project. In addition, ABM Resources is committed to regional exploration programs throughout its extensive holdings.

ABM Resources is well capitalised to achieve its milestones in 2012 and into 2013 with \$23M in cash (as of quarterly report dated 30 June 2012).

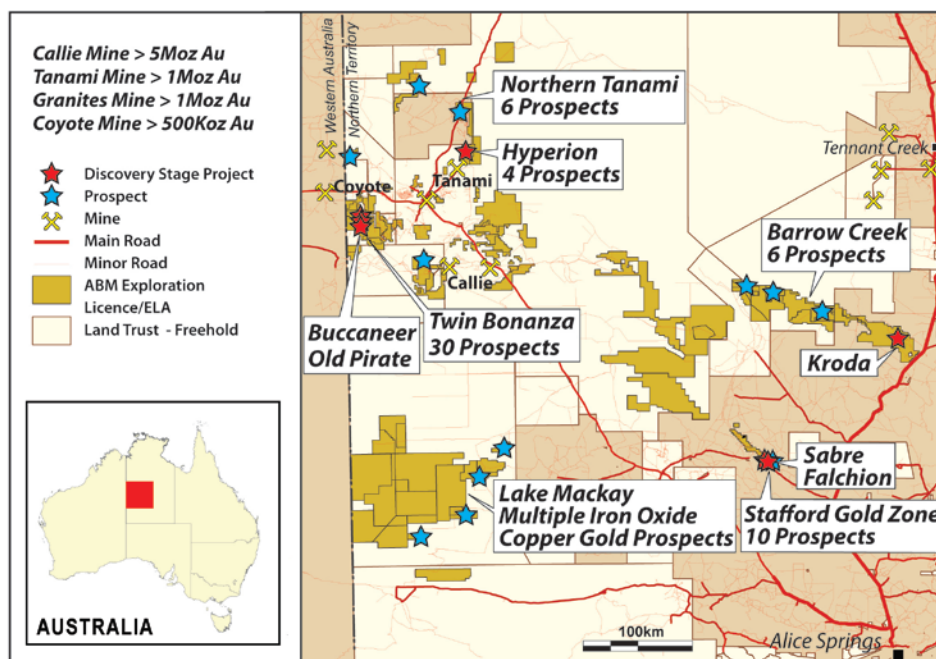


Figure 5. ABM Project Location Map Northern Territory.

Signed

Darren Holden – Managing Director

Competent Persons Statement

The information in this report that relates to Exploration Results, Mineral Resources or Ore Reserves is based on information compiled by Mr Darren Holden who is a Member of The Australasian Institute of Mining and Metallurgy. Mr Holden is a full time employee of ABM Resources NL and has sufficient experience which is relevant to the style of mineralisation and type of deposit under consideration and to the activity which he is undertaking to qualify as a Competent Person as defined in the 2004 Edition of the "Australasian Code for Reporting Exploration Results, Mineral Resources and Ore Reserves". Mr Holden consents to the inclusion in the documents of the matters based on this information in the form and context in which it appears.

For Further Information Please Contact

Jutta Zimmermann
CFO / Company Secretary
+61 8 9423 9777

Darren Holden
Managing Director
+61 8 9423 9777

Berdine Mastaglia
Investor Relations Manager
+61 8 9423 9777

APPENDIX 1. Details of 2012 Surface Sampling Results from Golden Hind Prospect.

Notes - Sample width does not always equal vein width (veins wider than 1 to 1.5m are generally sampled with multiple samples across the width).

Whilst individual sample grades may vary due to statistical nugget effect between the original and duplicate, overall they are statistical comparable (28.95g/t average in the original vs 28.47g/t average in duplicate in Table 1.1).

Table 1.1 Assay results from 2012 Golden Hind sorted by average grade.

Sample ID (T=original & U=duplicate)	Combined weight (kg)	Easting (mE)	Northing (mN)	Sample Length (m)	Sample width (m)	Original Sample Grade (Au g/t)	Duplicate Sample Grade (Au g/t)	Average Grade (Au g/t)
T/U03895	5.12	516769	7766955	1.00	0.80	784.00	698.00	741.00
T/U03893	6.46	516769	7766955	1.00	0.40	396.00	554.00	475.00
T/U03910	6.35	516777	7766932	1.40	0.70	693.00	165.00	429.00
T/U03889	6.74	516767	7766959	1.10	0.40	122.00	678.00	400.00
T/U03920	5.13	516783	7766924	0.51	0.30	301.00	151.00	226.00
T/U03892	4.73	516769	7766955	0.30	0.40	136.00	205.00	170.50
T/U03890	4.27	516767	7766958	0.45	0.30	140.00	152.00	146.00
T/U03924	5.53	516785	7766922	1.20	0.50	81.20	132.00	106.60
T/U03894	4.86	516769	7766946	1.00	0.30	104.00	78.80	91.40
T/U03923	5.53	516785	7766923	0.70	0.10	4.59	167.00	85.80
T/U03919	6.46	516782	7766925	1.00	0.30	41.90	123.00	82.45
T/U03898	4.57	516771	7766948	1.00	0.30	16.80	147.00	81.90
T/U03912	6.65	516778	7766931	0.70	0.70	103.00	57.20	80.10
T/U03914	5.29	516779	7766929	1.00	0.30	112.00	45.60	78.80
T/U03891	5.54	516767	7766957	1.00	0.60	104.00	51.70	77.85
T/U03911	6.23	516778	7766931	0.80	0.60	102.00	46.90	74.45
T/U03903	6.58	516774	7766939	0.90	0.30	89.60	46.40	68.00
T/U03896	4.63	516770	7766952	1.30	0.50	29.00	103.00	66.00
T/U03905	5.97	516775	7766937	1.49	0.50	87.10	37.90	62.50
T/U03925	5.59	516785	7766921	0.57	0.80	85.20	26.90	56.05
T/U03897	5.81	516771	7766950	1.00	0.30	88.10	18.05	53.08
T/U03909	5.74	516776	7766933	1.00	0.40	64.90	35.20	50.05
T/U03902	6.29	516774	7766940	0.80	0.20	55.30	12.65	33.98
T/U03931	6.00	516793	7766908	1.00	0.60	28.80	39.00	33.90
T/U03913	6.90	516778	7766930	1.30	0.50	26.80	25.50	26.15
T/U03899	5.94	516773	7766943	1.10	0.50	15.20	28.20	21.70
T/U03901	6.18	516774	7766941	1.30	0.30	2.65	40.00	21.33
T/U03922	5.00	516785	7766924	1.00	0.30	21.50	21.10	21.30
T/U03917	5.62	516781	7766926	1.20	0.50	37.60	4.06	20.83
T/U03921	5.59	516783	7766924	1.00	0.40	21.30	18.60	19.95
T/U03904	5.98	516775	7766939	1.30	0.40	10.20	28.00	19.10
T/U03906	5.31	516776	7766936	1.00	0.40	15.55	22.20	18.88
T/U03926	5.45	516785	7766922	1.00	0.50	29.90	5.08	17.49
T/U03927	6.02	516789	7766913	1.00	0.50	24.60	8.72	16.66
T/U03907	7.11	516773	7766938	1.00	0.70	15.10	17.80	16.45
T/U03784	5.14	516690	7767046	1.00	0.20	28.70	2.04	15.37
T/U04174	4.56	516785	7766922	1.30	0.50	0.38	27.30	13.84
T/U04175	5.32	516784	7766924	0.05	0.40	5.11	19.85	12.48
T/U03918	6.04	516782	7766925	0.80	0.50	19.10	4.61	11.86
T/U03915	6.55	516780	7766928	0.87	0.40	12.85	9.57	11.21
T/U03796	5.37	516708	7767028	1.00	0.30	3.13	16.95	10.04
T/U03883	3.97	516747	7766974	1.00	0.30	2.62	14.75	8.69
T/U04176	5.63	516784	7766924	1.00	0.30	5.75	9.89	7.82
T/U03884	5.83	516749	7766971	0.80	0.30	11.25	2.72	6.99
T/U04173	4.78	516785	7766922	0.90	0.40	4.90	8.25	6.58

Sample ID (T=original & U=duplicate)	Combined weight (kg)	Easting (mE)	Northing (mN)	Sample Length (m)	Sample width (m)	Original Sample Grade (Au g/t)	Duplicate Sample Grade (Au g/t)	Average Grade (Au g/t)
T/U03849	5.32	516734	7766997	1.00	0.50	6.51	5.69	6.10
T/U03853	4.97	516737	7766993	1.10	0.50	4.38	5.89	5.14
T/U03848	3.64	516734	7766997	0.33	0.30	4.35	5.91	5.13
T/U03916	6.75	516780	7766927	1.24	0.40	5.59	4.51	5.05
T/U03908	6.09	516776	7766934	1.20	0.60	4.40	5.38	4.89
T/U03786	5.57	516693	7767043	1.00	0.50	7.17	2.57	4.87
T/U03900	6.59	516773	7766942	0.70	0.50	4.45	4.71	4.58
T/U03885	5.65	516749	7766971	1.10	0.20	8.73	0.36	4.55
T/U03785	4.28	516692	7767043	1.10	0.50	3.63	4.65	4.14
T/U03850	4.77	516736	7766996	1.10	0.30	1.67	6.02	3.85
T/U03854	5.27	516738	7766992	0.90	0.30	4.53	3.09	3.81
T/U03880	5.15	516748	7766978	1.00	0.50	3.20	2.72	2.96
T/U03928	5.75	516790	7766912	1.08	0.60	1.76	4.11	2.94
T/U03855	5.97	516738	7766991	1.00	0.40	3.63	1.60	2.62
T/U03936	5.31	516796	7766903	0.90	0.20	0.50	4.24	2.37
T/U03935	6.35	516795	7766904	1.20	0.30	1.19	3.07	2.13
T/U03856	4.91	516739	7766990	0.90	0.30	3.07	1.10	2.09
T/U03781	4.99	516686	7767051	1.00	0.50	1.63	2.48	2.06
T/U03870	6.46	516750	7766979	1.00	0.50	3.40	0.70	2.05
T/U03929	5.73	516790	7766912	1.00	0.60	2.01	2.09	2.05
T/U03940	5.60	516796	7766904	1.00	0.50	1.34	2.45	1.90
T/U03934	6.10	516795	7766905	1.00	0.40	2.34	1.24	1.79
T/U03939	6.30	516798	7766901	1.00	0.20	1.44	1.37	1.41
T/U03807	4.99	516702	7767040	1.00	0.60	1.79	1.01	1.40
T/U03779	0.00	516683	7767054	1.22	0.20	1.07	1.45	1.26
T/U03869	5.58	516749	7766980	1.20	0.30	1.28	1.24	1.26
T/U03857	6.18	516739	7766990	1.00	0.40	0.89	1.46	1.18
T/U03810	3.44	516708	7767035	1.37	0.40	0.84	1.48	1.16
T/U03799	5.72	516695	7767046	1.00	0.60	0.01	2.05	1.03
T/U03932	6.65	516794	7766907	1.00	0.80	1.59	0.40	1.00
T/U03871	6.01	516750	7766978	1.10	0.40	0.95	1.04	1.00
T/U03865	5.96	516745	7766982	1.10	0.50	0.86	1.09	0.98
T/U03933	6.20	516794	7766906	0.80	0.50	0.77	1.11	0.94
T/U03797	5.16	516713	7767020	0.57	0.40	0.86	1.01	0.94
T/U03809	4.91	516708	7767035	0.38	0.60	1.54	0.32	0.93
T/U03868	5.79	516747	7766980	1.00	0.30	1.02	0.84	0.93
T/U03882	4.31	516748	7766976	1.00	0.30	0.94	0.89	0.92
T/U03814	5.51	516710	7767032	1.00	0.40	1.27	0.50	0.89
T/U03866	5.57	516746	7766982	1.00	0.50	1.31	0.12	0.72
T/U03811	5.53	516708	7767034	1.10	0.20	1.08	0.32	0.70
T/U03806	4.31	516702	7767041	0.90	0.70	1.02	0.36	0.69
T/U03859	5.74	516740	7766988	0.44	0.30	0.75	0.63	0.69
T/U03872	3.80	516750	7766977	1.00	0.30	0.45	0.90	0.68
T/U03930	5.06	516793	7766908	0.22	0.40	0.85	0.41	0.63
T/U03782	5.02	516687	7767050	1.00	0.25	0.47	0.75	0.61
T/U03937	4.92	516796	7766903	1.00	0.30	0.75	0.47	0.61
T/U03881	4.05	516749	7766976	1.04	0.30	0.63	0.58	0.61
T/U03867	5.64	516747	7766981	1.46	0.20	0.39	0.73	0.56
T/U03864	5.55	516744	7766982	1.00	0.60	0.72	0.39	0.56
T/U03886	5.20	516750	7766970	1.00	0.40	0.91	0.18	0.55
T/U03813	5.31	516709	7767032	0.80	0.30	0.62	0.47	0.55
T/U03832	5.14	516724	7767016	0.90	0.50	<0.01	0.51	0.51
T/U03798	6.04	516713	7767020	1.00	0.40	0.48	0.53	0.51
T/U03847	4.94	516734	7767002	1.00	0.50	0.36	0.53	0.45
T/U03808	4.24	516704	7767039	1.00	0.50	0.66	0.21	0.44
T/U03858	5.16	516740	7766989	1.10	0.30	0.45	0.42	0.44
T/U03879	5.12	516748	7766979	0.90	0.40	0.37	0.39	0.38

Sample ID (T=original & U=duplicate)	Combined weight (kg)	Easting (mE)	Northing (mN)	Sample Length (m)	Sample width (m)	Original Sample Grade (Au g/t)	Duplicate Sample Grade (Au g/t)	Average Grade (Au g/t)
T/U03783	4.84	516688	7767049	1.00	0.35	0.39	0.32	0.36
T/U03852	4.06	516737	7766994	1.00	0.60	0.08	0.63	0.36
T/U03780	3.78	516684	7767053	1.00	0.15	0.30	0.39	0.35
T/U03877	4.67	516753	7766974	1.00	0.40	0.29	0.36	0.33
T/U03837	4.93	516726	7767011	1.04	0.50	<0.01	0.31	0.31
T/U03833	5.39	516725	7767016	1.10	0.40	0.21	0.40	0.31
T/U03876	5.35	516751	7766977	1.00	0.50	0.14	0.47	0.31
T/U03873	4.07	516748	7766979	1.30	0.40	0.20	0.36	0.28
T/U03874	4.41	516749	7766978	1.00	0.40	0.16	0.36	0.26
T/U03789	4.97	516698	7767036	0.71	1.20	<0.01	0.25	0.25
T/U03887	6.58	516751	7766968	1.00	0.30	0.22	0.28	0.25
T/U03821	4.47	516721	7767019	1.00	0.60	0.24	<0.01	0.24
T/U03787	4.95	516697	7767039	1.00	0.60	0.10	0.36	0.23
T/U03938	5.91	516797	7766902	1.20	0.40	0.11	0.29	0.20
T/U03800	5.03	516695	7767045	1.00	0.60	0.19	0.18	0.19
T/U03844	5.41	516730	7767005	1.10	0.20	0.34	0.01	0.18
T/U03815	5.93	516711	7767030	1.00	0.30	0.23	0.06	0.15
T/U03788	4.47	516697	7767037	1.40	0.70	0.25	0.02	0.14
T/U03805	5.68	516700	7767041	1.00	0.50	0.17	0.09	0.13
T/U03812	5.35	516708	7767033	1.10	0.30	0.17	0.09	0.13
T/U03863	4.88	516743	7766986	1.00	0.20	0.13	0.13	0.13
T/U03801	4.36	516696	7767044	0.90	0.40	0.05	0.20	0.13
T/U03861	6.17	516742	7766989	0.90	0.30	0.14	0.10	0.12
T/U03818	5.47	516719	7767020	1.10	0.50	0.02	0.21	0.12
T/U03802	4.65	516697	7767044	1.00	0.50	0.12	0.08	0.10
T/U03804	5.08	516698	7767042	1.00	0.60	0.07	0.11	0.09
T/U03851	4.02	516736	7766995	0.90	0.70	0.09	0.09	0.09
T/U03846	5.06	516729	7767005	1.00	0.50	0.12	0.05	0.09
T/U03875	4.90	516750	7766977	1.00	0.40	0.05	0.10	0.08
T/U03860	4.60	516740	7766988	1.00	0.30	0.13	0.02	0.08
T/U03817	4.43	516718	7767021	1.00	0.50	0.06	0.06	0.06
T/U03845	5.32	516731	7767005	1.00	0.30	0.06	<0.01	0.06
T/U03820	4.50	516720	7767019	0.90	0.20	0.05	<0.01	0.05
T/U03862	5.31	516743	7766988	1.00	0.50	0.05	<0.01	0.05
T/U03816	5.22	516714	7767025	1.00	0.40	0.07	0.02	0.05
T/U03803	4.81	516697	7767043	0.90	0.70	0.04	0.05	0.05
T/U03791	5.16	516697	7767039	0.90	0.80	<0.01	0.04	0.04
T/U03792	5.53	516698	7767038	1.00	1.00	<0.01	0.04	0.04
T/U03838	5.81	516726	7767010	1.40	0.60	0.04	<0.01	0.04
T/U03878	5.63	516759	7766969	1.00	0.30	0.02	0.05	0.04
T/U03841	4.80	516727	7767005	1.00	0.40	0.06	0.01	0.04
T/U03834	4.07	516726	7767015	1.00	0.30	0.03	<0.01	0.03
T/U03836	5.65	516726	7767012	0.45	0.50	<0.01	0.03	0.03
T/U03843	4.44	516729	7767006	0.90	0.20	0.04	0.02	0.03
T/U03795	4.59	516703	7767033	1.00	0.40	0.01	0.04	0.03
T/U03839	5.15	516726	7767009	1.00	0.60	<0.01	0.02	0.02
T/U03840	5.15	516726	7767008	1.00	0.50	0.03	0.01	0.02
T/U03842	4.50	516728	7767006	1.10	0.40	0.02	<0.01	0.02
T/U03790	4.66	516698	7767036	1.00	1.20	<0.01	0.01	0.01
T/U03793	4.90	516698	7767036	1.00	1.40	<0.01	0.01	0.01
T/U03794	5.09	516703	7767033	0.39	0.30	<0.01	0.01	0.01
T/U03819	4.23	516720	7767020	0.90	0.50	<0.01	0.01	0.01
T/U03824	5.36	516721	7767015	1.10	0.70	0.01	<0.01	0.01
T/U03828	4.07	516724	7767013	1.00	0.40	<0.01	0.01	0.01
T/U03888	4.56	516753	7766970	1.00	0.30	0.01	<0.01	0.01
T/U03822	4.92	516722	7767018	1.00	0.40	<0.01	<0.01	0.00
T/U03823	5.02	516721	7767016	0.35	0.30	<0.01	<0.01	0.00

Sample ID (T=original & U=duplicate)	Combined weight (kg)	Easting (mE)	Northing (mN)	Sample Length (m)	Sample width (m)	Original Sample Grade (Au g/t)	Duplicate Sample Grade (Au g/t)	Average Grade (Au g/t)
T/U03825	5.83	516722	7767015	0.90	0.60	<0.01	<0.01	0.00
T/U03826	4.18	516723	7767014	1.10	0.30	<0.01	<0.01	0.00
T/U03827	4.22	516724	7767014	0.70	0.30	<0.01	<0.01	0.00
T/U03829	5.56	516723	7767011	1.00	0.80	<0.01	<0.01	0.00
T/U03830	5.86	516722	7767017	1.00	0.60	<0.01	<0.01	0.00
T/U03831	5.74	516723	7767017	1.00	0.20	<0.01	<0.01	0.00
T/U03835	5.16	516725	7767013	1.03	0.60	<0.01	<0.01	0.00

Table 1.2 Assay results from 2012 Golden Hind Outlying Veins sorted by average grade.

Sample ID (T=original & U=duplicate)	Combined weight (kg)	Easting (mE)	Northing (mN)	Sample Length (m)	Sample width (m)	Original Sample Grade (Au g/t)	Duplicate Sample Grade (Au g/t)	Average Grade (Au g/t)
T/U04221	3.46	516785	7766850	0.30	0.10	<0.01	2.56	2.56
T/U04069	5.63	516781	7766764	1.00	0.80	<0.01	1.49	1.49
T/U04118	4.37	516745	7766817	1.00	0.30	0.56	<0.01	0.56
T/U03971	4.40	516859	7766839	1.10	0.90	0.78	0.01	0.40
T/U03976	6.10	516864	7766837	1.00	1.20	<0.01	0.37	0.37
T/U04106	3.50	516748	7766805	1.00	0.20	<0.01	0.27	0.27
T/U03977	5.66	516865	7766837	0.70	0.80	0.26	<0.01	0.26
T/U04177	6.11	516737	7766922	1.00	0.40	0.21	0.21	0.21
T/U03946	4.32	516819	7766867	1.30	0.30	0.01	0.34	0.18
T/U03962	5.37	516831	7766851	0.70	1.30	<0.01	0.16	0.16
T/U03970	5.40	516843	7766832	1.00	0.60	0.02	0.27	0.15
T/U04129	4.46	516737	7766835	1.44	0.30	<0.01	0.13	0.13
T/U04229	4.67	516794	7766838	1.00	0.30	0.04	0.18	0.11
T/U03952	5.62	516823	7766863	1.20	1.40	0.09	0.10	0.10
T/U04136	7.20	516744	7766851	1.00	0.30	0.10	0.08	0.09
T/U04178	6.18	516738	7766921	1.00	0.40	0.14	0.03	0.09
T/U03961	5.09	516830	7766852	0.90	1.10	0.01	0.15	0.08
T/U03973	7.86	516861	7766839	1.00	0.80	<0.01	0.08	0.08
T/U03979	6.20	516867	7766836	1.00	1.00	0.05	0.10	0.08
T/U03958	5.13	516829	7766854	1.00	0.60	0.09	0.05	0.07
T/U03959	5.03	516829	7766853	1.00	0.70	0.07	<0.01	0.07
T/U04041	5.47	516798	7766779	1.00	0.80	<0.01	0.07	0.07
T/U03942	4.41	516816	7766870	0.50	1.00	0.01	0.12	0.07
T/U04011	5.52	516846	7766876	1.10	1.40	0.02	0.11	0.07
T/U03941	5.71	516815	7766873	1.00	0.40	0.02	0.10	0.06
T/U04288	4.29	516932	7766909	0.70	0.30	<0.01	0.06	0.06
T/U03978	4.91	516866	7766837	1.20	0.90	0.07	0.03	0.05
T/U04191	3.89	516754	7766896	1.00	0.40	<0.01	0.05	0.05
T/U04215	1.81	516782	7766856	1.00	0.50	<0.01	0.05	0.05
T/U03969	7.31	516843	7766832	0.73	0.50	0.02	0.07	0.05
T/U03944	4.22	516818	7766869	1.30	0.50	0.04	0.05	0.05
T/U03975	5.10	516863	7766838	1.00	0.60	0.04	<0.01	0.04
T/U04107	3.44	516747	7766806	1.00	0.30	0.04	<0.01	0.04
T/U04367	5.47	516927	7766895	1.15	0.20	<0.01	0.04	0.04
T/U04375	5.49	516927	7766886	1.18	0.20	0.04	<0.01	0.04
T/U04182	4.87	516746	7766907	1.10	0.30	0.06	0.01	0.04
T/U03963	6.38	516831	7766850	0.70	0.70	<0.01	0.03	0.03
T/U04012	6.85	516847	7766876	0.30	1.90	0.03	<0.01	0.03
T/U04369	4.37	516927	7766893	1.00	0.20	<0.01	0.03	0.03
T/U03945	4.93	516819	7766868	0.50	0.40	0.01	0.03	0.02

Sample ID (T=original & U=duplicate)	Combined weight (kg)	Easting (mE)	Northing (mN)	Sample Length (m)	Sample width (m)	Original Sample Grade (Au g/t)	Duplicate Sample Grade (Au g/t)	Average Grade (Au g/t)
T/U03947	3.33	516820	7766867	1.10	0.50	<0.01	0.02	0.02
T/U03954	5.54	516825	7766862	1.20	1.40	0.02	<0.01	0.02
T/U03982	7.79	516870	7766835	1.00	18.00	0.02	<0.01	0.02
T/U04016	4.35	516849	7766877	1.02	0.90	<0.01	0.02	0.02
T/U04097	5.91	516760	7766790	1.10	0.60	<0.01	0.02	0.02
T/U04103	4.49	516766	7766785	0.80	0.20	0.02	<0.01	0.02
T/U04183	3.57	516747	7766906	1.29	0.40	0.02	<0.01	0.02
T/U04185	5.82	516751	7766901	0.90	0.30	0.02	<0.01	0.02
T/U04199	7.08	516770	7766869	0.90	0.50	0.02	<0.01	0.02
T/U04342	6.10	516928	7766898	1.00	0.20	<0.01	0.02	0.02
T/U03972	5.71	516860	7766839	0.70	0.70	0.01	0.02	0.02
T/U04090	5.87	516767	7766782	0.90	1.00	0.01	0.02	0.02
T/U03943	5.01	516817	7766869	1.10	0.90	<0.01	0.01	0.01
T/U03948	4.51	516821	7766866	1.10	0.60	0.01	<0.01	0.01
T/U03950	6.19	516822	7766865	1.20	1.20	0.01	<0.01	0.01
T/U03951	6.41	516823	7766864	0.70	1.60	<0.01	0.01	0.01
T/U03955	5.98	516826	7766861	1.36	1.20	0.01	<0.01	0.01
T/U03956	5.18	516827	7766860	1.00	0.90	0.01	0.01	0.01
T/U03960	6.22	516830	7766852	0.80	1.00	0.01	0.01	0.01
T/U03965	5.19	516832	7766849	1.00	0.60	<0.01	0.01	0.01
T/U03980	7.00	516869	7766836	0.70	0.70	0.01	<0.01	0.01
T/U03983	5.82	516873	7766834	0.80	0.60	<0.01	0.01	0.01
T/U03992	4.90	516834	7766886	0.35	0.50	<0.01	0.01	0.01
T/U03993	4.28	516834	7766886	1.00	0.40	0.01	<0.01	0.01
T/U03996	4.39	516840	7766885	0.20	0.80	0.01	<0.01	0.01
T/U03998	5.48	516841	7766884	1.40	0.90	<0.01	0.01	0.01
T/U03999	3.76	516842	7766884	1.00	0.60	<0.01	0.01	0.01
T/U04010	6.20	516845	7766876	1.30	1.00	<0.01	0.01	0.01
T/U04017	6.79	516849	7766876	1.28	1.20	0.01	<0.01	0.01
T/U04061	6.08	516783	7766760	1.00	0.70	<0.01	0.01	0.01
T/U04075	5.97	516780	7766767	1.20	0.90	<0.01	0.01	0.01
T/U04088	6.18	516769	7766780	1.20	0.80	<0.01	0.01	0.01
T/U04091	4.36	516767	7766783	0.70	1.10	<0.01	0.01	0.01
T/U04093	5.12	516765	7766784	1.00	0.40	0.01	<0.01	0.01
T/U04094	7.11	516764	7766786	1.00	0.30	<0.01	0.01	0.01
T/U04099	7.60	516759	7766791	0.76	0.30	<0.01	0.01	0.01
T/U04100	6.62	516759	7766792	1.00	0.30	<0.01	0.01	0.01
T/U04101	5.27	516767	7766783	0.80	0.30	0.01	0.01	0.01
T/U04105	6.00	516766	7766785	1.00	0.30	<0.01	0.01	0.01
T/U04159	5.29	516821	7766798	0.90	0.30	<0.01	0.01	0.01
T/U04170	5.04	516842	7766833	1.43	0.20	0.01	<0.01	0.01
T/U04179	6.42	516738	7766920	0.90	0.30	0.01	<0.01	0.01
T/U04180	6.53	516738	7766919	1.46	0.40	0.01	<0.01	0.01
T/U04181	6.53	516739	7766918	1.00	0.50	0.01	<0.01	0.01
T/U04184	4.71	516748	7766905	1.00	0.20	0.01	0.01	0.01
T/U04188	5.30	516752	7766899	0.90	0.50	<0.01	0.01	0.01
T/U04195	3.68	516750	7766888	1.00	0.40	0.01	<0.01	0.01
T/U04222	3.19	516785	7766850	1.20	0.10	0.01	<0.01	0.01
T/U04258	5.46	516936	7766934	1.26	0.40	<0.01	0.01	0.01
T/U04278	5.67	516934	7766918	0.44	0.25	<0.01	0.01	0.01
T/U04279	4.78	516934	7766919	1.00	0.35	<0.01	0.01	0.01
T/U04281	6.33	516933	7766915	0.69	0.25	<0.01	0.01	0.01
T/U04283	4.83	516932	7766913	1.00	0.20	<0.01	0.01	0.01
T/U04309	7.04	516927	7766890	1.00	0.50	<0.01	0.01	0.01
T/U04325	6.86	516929	7766901	1.00	0.20	<0.01	0.01	0.01
T/U04343	5.02	516928	7766897	1.00	0.20	<0.01	0.01	0.01
T/U04360	4.68	516927	7766899	1.00	0.20	0.01	0.01	0.01

Sample ID (T=original & U=duplicate)	Combined weight (kg)	Easting (mE)	Northing (mN)	Sample Length (m)	Sample width (m)	Original Sample Grade (Au g/t)	Duplicate Sample Grade (Au g/t)	Average Grade (Au g/t)
T/U04362	4.57	516925	7766897	1.00	0.20	0.01	<0.01	0.01
T/U04366	5.39	516928	7766894	0.72	0.20	<0.01	0.01	0.01
T/U04368	4.37	516927	7766894	0.77	0.20	<0.01	0.01	0.01
T/U04376	5.76	516926	7766886	1.22	0.20	<0.01	0.01	0.01
T/U04377	5.59	516925	7766885	1.15	0.20	<0.01	0.01	0.01
T/U04378	6.87	516924	7766885	1.00	0.20	<0.01	0.01	0.01
T/U04381	4.97	516924	7766881	0.03	0.20	<0.01	0.01	0.01
T/U04392	4.79	516926	7766875	1.00	0.20	<0.01	0.01	0.01
T/U03949	5.81	516821	7766865	0.60	1.00	<0.01	<0.01	0.00
T/U03953	5.92	516824	7766862	0.90	1.20	<0.01	<0.01	0.00
T/U03957	5.87	516828	7766855	1.20	0.40	<0.01	<0.01	0.00
T/U03964	5.85	516832	7766850	1.20	0.60	<0.01	<0.01	0.00
T/U03966	4.73	516829	7766853	1.00	0.40	<0.01	<0.01	0.00
T/U03967	5.95	516841	7766834	1.30	0.50	<0.01	<0.01	0.00
T/U03968	5.16	516842	7766833	1.20	0.40	<0.01	<0.01	0.00
T/U03974	5.70	516862	7766838	1.10	1.10	<0.01	<0.01	0.00
T/U03981	6.14	516870	7766835	1.00	0.60	<0.01	<0.01	0.00
T/U03984	5.89	516874	7766834	1.00	0.70	<0.01	<0.01	0.00
T/U03985	4.08	516875	7766834	0.90	0.50	<0.01	<0.01	0.00
T/U03986	5.61	516876	7766833	0.90	0.40	<0.01	<0.01	0.00
T/U03987	5.21	516877	7766833	1.10	1.20	<0.01	<0.01	0.00
T/U03988	6.71	516878	7766833	0.80	0.90	<0.01	<0.01	0.00
T/U03989	6.50	516878	7766832	1.10	0.80	<0.01	<0.01	0.00
T/U03990	5.38	516880	7766832	1.00	1.00	<0.01	<0.01	0.00
T/U03991	6.06	516877	7766833	1.00	0.50	<0.01	<0.01	0.00
T/U03994	4.48	516839	7766885	0.10	0.80	<0.01	<0.01	0.00
T/U03995	5.32	516840	7766885	0.60	0.90	<0.01	<0.01	0.00
T/U03997	3.57	516840	7766884	0.60	0.90	<0.01	<0.01	0.00
T/U04000	4.11	516843	7766884	0.82	0.40	<0.01	<0.01	0.00
T/U04001	3.79	516844	7766883	1.00	0.40	<0.01	<0.01	0.00
T/U04002	5.54	516839	7766884	1.30	0.30	<0.01	<0.01	0.00
T/U04003	5.20	516838	7766883	1.14	0.60	<0.01	<0.01	0.00
T/U04004	5.63	516838	7766882	1.00	0.80	<0.01	<0.01	0.00
T/U04005	4.35	516842	7766881	1.30	0.80	<0.01	<0.01	0.00
T/U04006	4.41	516843	7766880	1.34	0.70	<0.01	<0.01	0.00
T/U04007	5.56	516843	7766879	1.00	0.40	<0.01	<0.01	0.00
T/U04008	4.83	516843	7766875	0.90	0.40	<0.01	<0.01	0.00
T/U04009	6.70	516844	7766875	0.80	0.90	<0.01	<0.01	0.00
T/U04013	5.84	516847	7766876	0.70	0.80	<0.01	<0.01	0.00
T/U04014	5.87	516848	7766877	0.30	1.20	<0.01	<0.01	0.00
T/U04015	7.22	516848	7766877	0.93	1.40	<0.01	<0.01	0.00
T/U04018	3.80	516850	7766878	0.66	1.00	<0.01	<0.01	0.00
T/U04019	4.31	516850	7766877	1.00	0.70	<0.01	<0.01	0.00
T/U04020	5.93	516806	7766767	0.90	1.20	<0.01	<0.01	0.00
T/U04021	6.54	516805	7766767	0.80	1.20	<0.01	<0.01	0.00
T/U04022	5.97	516805	7766768	1.10	1.30	<0.01	<0.01	0.00
T/U04023	4.79	516804	7766769	1.20	1.30	<0.01	<0.01	0.00
T/U04024	5.24	516804	7766770	0.90	1.00	<0.01	<0.01	0.00
T/U04025	6.95	516803	7766771	1.00	0.80	<0.01	<0.01	0.00
T/U04026	5.90	516803	7766772	0.90	0.90	<0.01	<0.01	0.00
T/U04027	5.17	516802	7766772	1.30	1.40	<0.01	<0.01	0.00
T/U04028	4.55	516802	7766774	1.10	0.90	<0.01	<0.01	0.00
T/U04029	6.03	516801	7766775	1.20	1.20	<0.01	<0.01	0.00
T/U04030	4.67	516801	7766776	1.00	1.00	<0.01	<0.01	0.00
T/U04031	5.32	516800	7766775	1.41	0.90	<0.01	<0.01	0.00
T/U04032	6.01	516801	7766777	1.00	1.00	<0.01	<0.01	0.00
T/U04033	5.34	516800	7766776	1.28	1.00	<0.01	<0.01	0.00

Sample ID (T=original & U=duplicate)	Combined weight (kg)	Easting (mE)	Northing (mN)	Sample Length (m)	Sample width (m)	Original Sample Grade (Au g/t)	Duplicate Sample Grade (Au g/t)	Average Grade (Au g/t)
T/U04034	4.14	516800	7766777	1.00	0.70	<0.01	<0.01	0.00
T/U04035	5.02	516799	7766777	1.17	0.90	<0.01	<0.01	0.00
T/U04036	5.02	516800	7766778	1.08	0.80	<0.01	<0.01	0.00
T/U04037	6.23	516799	7766778	1.22	0.90	<0.01	<0.01	0.00
T/U04038	5.45	516799	7766779	1.08	0.90	<0.01	<0.01	0.00
T/U04039	6.14	516798	7766779	1.12	1.00	<0.01	<0.01	0.00
T/U04040	5.35	516799	7766780	1.00	0.90	<0.01	<0.01	0.00
T/U04042	4.62	516798	7766781	1.00	0.90	<0.01	<0.01	0.00
T/U04043	4.26	516797	7766780	1.35	1.10	<0.01	<0.01	0.00
T/U04044	5.28	516798	7766781	1.00	0.90	<0.01	<0.01	0.00
T/U04045	4.42	516797	7766781	0.95	0.90	<0.01	<0.01	0.00
T/U04046	3.84	516797	7766782	0.79	1.50	<0.01	<0.01	0.00
T/U04047	4.15	516797	7766783	1.00	1.00	<0.01	<0.01	0.00
T/U04048	5.06	516780	7766767	0.90	0.40	<0.01	<0.01	0.00
T/U04049	4.61	516779	7766768	1.10	0.30	<0.01	<0.01	0.00
T/U04050	4.13	516779	7766769	0.60	0.40	<0.01	<0.01	0.00
T/U04051	4.81	516778	7766769	1.10	0.50	<0.01	<0.01	0.00
T/U04052	5.65	516778	7766770	1.00	0.60	<0.01	<0.01	0.00
T/U04053	4.33	516776	7766772	1.00	0.40	<0.01	<0.01	0.00
T/U04054	5.95	516785	7766757	0.90	0.70	<0.01	<0.01	0.00
T/U04055	5.44	516785	7766758	0.80	0.70	<0.01	<0.01	0.00
T/U04056	5.37	516785	7766758	0.60	0.50	<0.01	<0.01	0.00
T/U04057	5.03	516785	7766759	0.04	1.00	<0.01	<0.01	0.00
T/U04058	4.93	516785	7766759	1.40	0.90	<0.01	<0.01	0.00
T/U04059	5.89	516783	7766759	1.00	0.70	<0.01	<0.01	0.00
T/U04060	5.75	516785	7766760	1.00	0.80	<0.01	<0.01	0.00
T/U04062	5.78	516785	7766760	1.00	1.00	<0.01	<0.01	0.00
T/U04063	7.10	516783	7766760	1.00	0.70	<0.01	<0.01	0.00
T/U04064	5.94	516784	7766762	1.00	0.90	<0.01	<0.01	0.00
T/U04065	4.86	516782	7766762	1.00	0.90	<0.01	<0.01	0.00
T/U04066	4.70	516784	7766763	1.00	0.90	<0.01	<0.01	0.00
T/U04067	5.25	516782	7766763	1.00	0.70	<0.01	<0.01	0.00
T/U04068	4.98	516784	7766764	1.00	0.50	<0.01	<0.01	0.00
T/U04070	5.31	516783	7766765	1.00	0.70	<0.01	<0.01	0.00
T/U04071	5.76	516781	7766765	1.00	0.90	<0.01	<0.01	0.00
T/U04072	5.11	516783	7766766	1.00	0.80	<0.01	<0.01	0.00
T/U04073	4.70	516781	7766765	1.00	1.00	<0.01	<0.01	0.00
T/U04074	5.44	516784	7766765	1.00	0.70	<0.01	<0.01	0.00
T/U04076	4.96	516780	7766768	0.90	0.60	<0.01	<0.01	0.00
T/U04077	5.89	516779	7766769	1.20	0.90	<0.01	<0.01	0.00
T/U04078	5.86	516779	7766770	0.90	0.90	<0.01	<0.01	0.00
T/U04079	5.51	516778	7766770	0.80	0.60	<0.01	<0.01	0.00
T/U04080	5.43	516778	7766771	1.20	0.60	<0.01	<0.01	0.00
T/U04081	6.09	516777	7766772	0.60	0.40	<0.01	<0.01	0.00
T/U04082	5.93	516777	7766773	1.10	0.40	<0.01	<0.01	0.00
T/U04083	6.64	516776	7766774	1.15	0.50	<0.01	<0.01	0.00
T/U04084	6.62	516775	7766774	1.00	0.30	<0.01	<0.01	0.00
T/U04085	4.73	516771	7766778	1.10	0.60	<0.01	<0.01	0.00
T/U04086	5.18	516770	7766779	0.80	0.90	<0.01	<0.01	0.00
T/U04087	5.33	516769	7766780	0.60	0.90	<0.01	<0.01	0.00
T/U04089	5.42	516768	7766781	1.20	0.60	<0.01	<0.01	0.00
T/U04092	6.74	516766	7766783	1.30	1.00	<0.01	<0.01	0.00
T/U04095	6.04	516760	7766787	1.40	0.50	<0.01	<0.01	0.00
T/U04096	6.45	516760	7766789	0.70	0.40	<0.01	<0.01	0.00
T/U04098	5.73	516760	7766791	0.80	0.50	<0.01	<0.01	0.00
T/U04102	4.02	516767	7766784	1.20	0.20	<0.01	<0.01	0.00
T/U04104	6.24	516765	7766786	0.88	0.30	<0.01	<0.01	0.00

Sample ID (T=original & U=duplicate)	Combined weight (kg)	Easting (mE)	Northing (mN)	Sample Length (m)	Sample width (m)	Original Sample Grade (Au g/t)	Duplicate Sample Grade (Au g/t)	Average Grade (Au g/t)
T/U04108	4.35	516747	7766808	1.20	0.30	<0.01	<0.01	0.00
T/U04109	4.74	516747	7766809	0.70	0.20	<0.01	<0.01	0.00
T/U04110	3.31	516746	7766810	0.90	0.20	<0.01	<0.01	0.00
T/U04111	3.17	516746	7766810	1.00	0.30	<0.01	<0.01	0.00
T/U04112	4.73	516746	7766812	0.70	0.20	<0.01	<0.01	0.00
T/U04113	3.72	516746	7766813	0.90	0.20	<0.01	<0.01	0.00
T/U04114	3.58	516746	7766813	1.20	0.30	<0.01	<0.01	0.00
T/U04115	5.39	516745	7766815	1.10	0.30	<0.01	<0.01	0.00
T/U04116	4.51	516745	7766816	0.70	0.30	<0.01	<0.01	0.00
T/U04117	4.50	516745	7766816	0.99	0.20	<0.01	<0.01	0.00
T/U04119	3.27	516740	7766826	1.20	0.80	<0.01	<0.01	0.00
T/U04120	4.13	516740	7766827	0.70	0.60	<0.01	<0.01	0.00
T/U04121	4.38	516739	7766828	1.10	0.30	<0.01	<0.01	0.00
T/U04122	3.07	516739	7766829	1.30	0.40	<0.01	<0.01	0.00
T/U04123	3.43	516739	7766830	0.90	0.20	<0.01	<0.01	0.00
T/U04124	2.78	516738	7766831	0.90	0.40	<0.01	<0.01	0.00
T/U04125	5.87	516738	7766832	1.00	0.30	<0.01	<0.01	0.00
T/U04126	5.12	516738	7766833	1.10	0.30	<0.01	<0.01	0.00
T/U04127	5.99	516737	7766834	0.80	0.40	<0.01	<0.01	0.00
T/U04128	6.36	516737	7766834	1.00	0.30	<0.01	<0.01	0.00
T/U04130	4.54	516736	7766837	1.00	0.30	<0.01	<0.01	0.00
T/U04131	4.81	516735	7766838	1.00	0.40	<0.01	<0.01	0.00
T/U04132	2.77	516734	7766841	1.00	0.30	<0.01	<0.01	0.00
T/U04133	3.78	516728	7766848	1.00	0.50	<0.01	<0.01	0.00
T/U04134	3.58	516726	7766853	1.00	0.30	<0.01	<0.01	0.00
T/U04135	5.49	516736	7766819	1.00	0.30	<0.01	<0.01	0.00
T/U04137	3.56	516776	7766821	1.00		<0.01	<0.01	0.00
T/U04138	5.67	516777	7766820	1.00	0.20	<0.01	<0.01	0.00
T/U04139	5.94	516777	7766818	0.94	0.20	<0.01	<0.01	0.00
T/U04140	4.94	516778	7766819	1.00	0.30	<0.01	<0.01	0.00
T/U04141	4.95	516745	7766818	1.00	0.30	<0.01	<0.01	0.00
T/U04142	4.40	516778	7766819	1.00	0.20	<0.01	<0.01	0.00
T/U04143	3.89	516777	7766817	1.00	0.60	<0.01	<0.01	0.00
T/U04144	4.47	516779	7766812	1.17	0.20	<0.01	<0.01	0.00
T/U04145	3.99	516778	7766813	1.00	0.40	<0.01	<0.01	0.00
T/U04146	3.71	516810	7766817	1.00	0.40	<0.01	<0.01	0.00
T/U04147	4.69	516811	7766816	1.00	0.30	<0.01	<0.01	0.00
T/U04148	3.40	516813	7766805	0.90	0.20	<0.01	<0.01	0.00
T/U04149	3.43	516813	7766805	0.90	0.30	<0.01	<0.01	0.00
T/U04150	3.17	516814	7766804	1.20	0.30	<0.01	<0.01	0.00
T/U04151	3.38	516815	7766803	0.90	0.30	<0.01	<0.01	0.00
T/U04152	4.36	516816	7766803	1.10	0.20	<0.01	<0.01	0.00
T/U04153	5.24	516816	7766802	0.80	0.40	<0.01	<0.01	0.00
T/U04154	4.56	516817	7766802	1.30	0.30	<0.01	<0.01	0.00
T/U04155	5.74	516818	7766801	1.00	0.20	<0.01	<0.01	0.00
T/U04156	5.61	516819	7766800	0.70	0.20	<0.01	<0.01	0.00
T/U04157	6.21	516819	7766800	1.20	0.30	<0.01	<0.01	0.00
T/U04158	4.56	516820	7766799	1.00	0.30	<0.01	<0.01	0.00
T/U04160	5.77	516822	7766798	1.20	0.40	<0.01	<0.01	0.00
T/U04161	3.96	516822	7766797	1.10	0.20	<0.01	<0.01	0.00
T/U04162	3.35	516823	7766796	0.80	0.40	<0.01	<0.01	0.00
T/U04163	4.44	516824	7766795	1.10	0.20	<0.01	<0.01	0.00
T/U04164	6.33	516825	7766795	1.10	0.30	<0.01	<0.01	0.00
T/U04165	4.17	516826	7766794	1.00	0.30	<0.01	<0.01	0.00
T/U04166	4.56	516826	7766793	1.30	0.30	<0.01	<0.01	0.00
T/U04167	3.18	516827	7766793	0.70	0.20	<0.01	<0.01	0.00
T/U04168	4.62	516828	7766792	0.71	0.20	<0.01	<0.01	0.00

Sample ID (T=original & U=duplicate)	Combined weight (kg)	Easting (mE)	Northing (mN)	Sample Length (m)	Sample width (m)	Original Sample Grade (Au g/t)	Duplicate Sample Grade (Au g/t)	Average Grade (Au g/t)
T/U04169	4.57	516828	7766792	1.00	0.30	<0.01	<0.01	0.00
T/U04171	5.93	516841	7766833	1.00	0.50	<0.01	<0.01	0.00
T/U04172	6.02	516827	7766858	1.00	0.40	<0.01	<0.01	0.00
T/U04186	7.17	516751	7766900	0.90	0.50	<0.01	<0.01	0.00
T/U04187	6.57	516752	7766900	1.00	0.50	<0.01	<0.01	0.00
T/U04189	5.04	516753	7766898	1.20	0.30	<0.01	<0.01	0.00
T/U04190	4.20	516753	7766897	0.80	0.30	<0.01	<0.01	0.00
T/U04192	3.88	516755	7766893	1.00	0.30	<0.01	<0.01	0.00
T/U04193	4.98	516750	7766889	0.80	0.40	<0.01	<0.01	0.00
T/U04194	6.81	516750	7766888	0.35	0.60	<0.01	<0.01	0.00
T/U04196	2.50	516767	7766873	1.00	0.30	<0.01	<0.01	0.00
T/U04197	3.04	516767	7766871	1.00	0.40	<0.01	<0.01	0.00
T/U04198	6.88	516769	7766870	0.70	0.60	<0.01	<0.01	0.00
T/U04200	6.37	516770	7766869	1.30	0.40	<0.01	<0.01	0.00
T/U04201	5.67	516771	7766868	1.10	0.30	<0.01	<0.01	0.00
T/U04202	3.49	516772	7766867	0.90	0.30	<0.01	<0.01	0.00
T/U04203	4.14	516772	7766866	0.12	0.30	<0.01	<0.01	0.00
T/U04204	3.66	516773	7766866	1.37	0.30	<0.01	<0.01	0.00
T/U04205	3.91	516773	7766865	1.10	0.30	<0.01	<0.01	0.00
T/U04206	5.57	516774	7766864	1.00	0.20	<0.01	<0.01	0.00
T/U04207	6.17	516774	7766863	0.80	0.40	<0.01	<0.01	0.00
T/U04208	6.09	516775	7766862	1.10	0.60	<0.01	<0.01	0.00
T/U04209	6.39	516775	7766861	1.20	0.40	<0.01	<0.01	0.00
T/U04210	6.03	516776	7766860	1.13	0.30	<0.01	<0.01	0.00
T/U04211	4.12	516777	7766859	1.00	0.40	<0.01	<0.01	0.00
T/U04212	3.32	516779	7766859	0.64	0.30	<0.01	<0.01	0.00
T/U04213	4.75	516780	7766858	1.00	0.20	<0.01	<0.01	0.00
T/U04214	4.07	516781	7766857	1.00	0.20	<0.01	<0.01	0.00
T/U04216	3.94	516782	7766855	0.90	0.20	<0.01	<0.01	0.00
T/U04217	3.92	516783	7766854	1.00	0.30	<0.01	<0.01	0.00
T/U04218	4.03	516783	7766854	1.00	0.20	<0.01	<0.01	0.00
T/U04219	2.88	516785	7766853	0.89	0.40	<0.01	<0.01	0.00
T/U04220	3.34	516784	7766852	1.00	0.10	<0.01	<0.01	0.00
T/U04223	1.65	516786	7766849	0.90	0.10	<0.01	<0.01	0.00
T/U04224	3.99	516787	7766848	0.90	0.10	<0.01	<0.01	0.00
T/U04225	2.62	516787	7766847	1.00	0.10	<0.01	<0.01	0.00
T/U04226	5.00	516787	7766846	1.00	0.15	<0.01	<0.01	0.00
T/U04227	2.75	516788	7766846	0.10	0.40	<0.01	<0.01	0.00
T/U04228	4.59	516788	7766846	1.00	0.20	<0.01	<0.01	0.00
T/U04230	5.59	516940	7766950	1.00	0.50	<0.01	<0.01	0.00
T/U04231	4.62	516941	7766952	1.00	0.30	<0.01	<0.01	0.00
T/U04232	5.89	516940	7766950	1.39	0.50	<0.01	<0.01	0.00
T/U04233	4.78	516941	7766951	1.00	0.25	<0.01	<0.01	0.00
T/U04234	5.05	516939	7766949	1.39	0.30	<0.01	<0.01	0.00
T/U04235	5.62	516940	7766950	1.00	0.40	<0.01	<0.01	0.00
T/U04236	6.18	516939	7766948	1.18	0.50	<0.01	<0.01	0.00
T/U04237	5.58	516940	7766949	1.00	0.15	<0.01	<0.01	0.00
T/U04238	5.73	516938	7766946	1.00	0.40	<0.01	<0.01	0.00
T/U04239	7.00	516940	7766949	1.00	0.20	<0.01	<0.01	0.00
T/U04240	5.49	516940	7766946	0.36	0.30	<0.01	<0.01	0.00
T/U04241	5.44	516940	7766946	1.00	0.30	<0.01	<0.01	0.00
T/U04242	5.54	516939	7766948	1.00	0.30	<0.01	<0.01	0.00
T/U04243	5.10	516940	7766945	1.00	0.40	<0.01	<0.01	0.00
T/U04244	6.94	516939	7766947	1.00	0.30	<0.01	<0.01	0.00
T/U04245	5.56	516940	7766944	1.00	0.30	<0.01	<0.01	0.00
T/U04246	4.72	516939	7766945	1.18	0.20	<0.01	<0.01	0.00
T/U04247	5.11	516940	7766944	1.10	0.40	<0.01	<0.01	0.00

Sample ID (T=original & U=duplicate)	Combined weight (kg)	Easting (mE)	Northing (mN)	Sample Length (m)	Sample width (m)	Original Sample Grade (Au g/t)	Duplicate Sample Grade (Au g/t)	Average Grade (Au g/t)
T/U04248	5.23	516939	7766945	1.16	0.30	<0.01	<0.01	0.00
T/U04249	5.86	516939	7766946	1.00	0.50	<0.01	<0.01	0.00
T/U04250	5.21	516938	7766939	1.00	0.30	<0.01	<0.01	0.00
T/U04251	6.42	516937	7766938	1.20	0.45	<0.01	<0.01	0.00
T/U04252	5.53	516938	7766938	0.73	0.30	<0.01	<0.01	0.00
T/U04253	4.90	516937	7766938	1.00	0.40	<0.01	<0.01	0.00
T/U04254	5.67	516937	7766936	1.26	0.35	<0.01	<0.01	0.00
T/U04255	5.62	516937	7766937	1.00	0.50	<0.01	<0.01	0.00
T/U04256	5.20	516936	7766935	1.26	0.30	<0.01	<0.01	0.00
T/U04257	5.09	516937	7766936	1.00	0.50	<0.01	<0.01	0.00
T/U04259	5.39	516937	7766935	1.00	0.30	<0.01	<0.01	0.00
T/U04260	5.00	516936	7766933	1.35	0.30	<0.01	<0.01	0.00
T/U04261	5.93	516937	7766934	1.00	0.25	<0.01	<0.01	0.00
T/U04262	5.10	516936	7766932	1.45	0.30	<0.01	<0.01	0.00
T/U04263	5.26	516936	7766933	1.00	0.25	<0.01	<0.01	0.00
T/U04264	3.98	516935	7766931	0.76	0.30	<0.01	<0.01	0.00
T/U04265	5.24	516936	7766931	0.80	0.45	<0.01	<0.01	0.00
T/U04266	4.91	516936	7766931	1.00	0.30	<0.01	<0.01	0.00
T/U04267	5.75	516935	7766928	0.33	0.30	<0.01	<0.01	0.00
T/U04268	4.30	516935	7766928	1.00	0.30	<0.01	<0.01	0.00
T/U04269	5.25	516935	7766926	0.77	0.25	<0.01	<0.01	0.00
T/U04270	4.36	516935	7766927	1.20	0.20	<0.01	<0.01	0.00
T/U04271	5.30	516935	7766925	0.80	0.30	<0.01	<0.01	0.00
T/U04272	5.43	516935	7766925	1.20	0.25	<0.01	<0.01	0.00
T/U04273	5.68	516935	7766923	1.10	0.30	<0.01	<0.01	0.00
T/U04274	7.42	516934	7766922	1.00	0.30	<0.01	<0.01	0.00
T/U04275	4.47	516934	7766921	1.10	0.30	<0.01	<0.01	0.00
T/U04276	6.13	516934	7766920	0.70	0.35	<0.01	<0.01	0.00
T/U04277	5.03	516934	7766919	1.00	0.20	<0.01	<0.01	0.00
T/U04280	5.55	516932	7766916	0.71	0.15	<0.01	<0.01	0.00
T/U04282	5.02	516932	7766915	1.20	0.35	<0.01	<0.01	0.00
T/U04284	5.46	516932	7766912	1.00	0.30	<0.01	<0.01	0.00
T/U04285	5.73	516933	7766912	1.20	0.23	<0.01	<0.01	0.00
T/U04286	6.39	516933	7766910	0.80	0.35	<0.01	<0.01	0.00
T/U04287	6.55	516933	7766910	1.20	0.40	<0.01	<0.01	0.00
T/U04289	5.49	516932	7766908	0.90	0.30	<0.01	<0.01	0.00
T/U04290	4.99	516932	7766907	1.30	0.30	<0.01	<0.01	0.00
T/U04291	4.77	516931	7766906	0.50	0.30	<0.01	<0.01	0.00
T/U04292	4.91	516931	7766905	1.30	0.20	<0.01	<0.01	0.00
T/U04293	7.15	516931	7766904	1.00	0.20	<0.01	<0.01	0.00
T/U04294	7.35	516930	7766903	1.15	0.20	<0.01	<0.01	0.00
T/U04295	7.35	516929	7766904	0.84	0.20	<0.01	<0.01	0.00
T/U04296	6.58	516930	7766903	1.10	0.40	<0.01	<0.01	0.00
T/U04297	4.56	516929	7766902	1.00	0.30	<0.01	<0.01	0.00
T/U04298	5.05	516929	7766900	1.00	0.30	<0.01	<0.01	0.00
T/U04299	6.66	516927	7766898	0.49	0.27	<0.01	<0.01	0.00
T/U04300	7.69	516927	7766899	0.91	0.40	<0.01	<0.01	0.00
T/U04301	6.94	516927	7766898	1.10	0.23	<0.01	<0.01	0.00
T/U04302	7.84	516927	7766897	1.40	0.20	<0.01	<0.01	0.00
T/U04303	6.64	516927	7766895	0.70	0.35	<0.01	<0.01	0.00
T/U04304	7.49	516927	7766895	1.22	0.20	<0.01	<0.01	0.00
T/U04305	6.03	516928	7766893	0.73	0.20	<0.01	<0.01	0.00
T/U04306	6.52	516927	7766893	1.10	0.30	<0.01	<0.01	0.00
T/U04307	5.64	516927	7766892	1.00	0.50	<0.01	<0.01	0.00
T/U04308	5.62	516927	7766891	0.90	0.20	<0.01	<0.01	0.00
T/U04310	7.38	516927	7766888	1.00	0.40	<0.01	<0.01	0.00
T/U04311	5.46	516927	7766886	1.50	0.20	<0.01	<0.01	0.00

Sample ID (T=original & U=duplicate)	Combined weight (kg)	Easting (mE)	Northing (mN)	Sample Length (m)	Sample width (m)	Original Sample Grade (Au g/t)	Duplicate Sample Grade (Au g/t)	Average Grade (Au g/t)
T/U04312	6.53	516926	7766887	1.00	0.30	<0.01	<0.01	0.00
T/U04313	6.92	516934	7766912	1.00	0.20	<0.01	<0.01	0.00
T/U04314	7.01	516934	7766911	1.40	0.25	<0.01	<0.01	0.00
T/U04315	6.87	516933	7766910	0.70	0.30	<0.01	<0.01	0.00
T/U04316	5.87	516933	7766909	0.90	0.30	<0.01	<0.01	0.00
T/U04317	6.57	516932	7766909	1.10	0.40	<0.01	<0.01	0.00
T/U04318	3.99	516932	7766908	0.70	0.30	<0.01	<0.01	0.00
T/U04319	5.12	516932	7766907	1.00	0.35	<0.01	<0.01	0.00
T/U04320	5.82	516931	7766905	0.50	0.30	<0.01	<0.01	0.00
T/U04321	5.79	516931	7766905	1.40	0.25	<0.01	<0.01	0.00
T/U04322	6.13	516930	7766904	1.00	0.30	<0.01	<0.01	0.00
T/U04323	4.21	516929	7766903	0.70	0.20	<0.01	<0.01	0.00
T/U04324	6.26	516929	7766902	1.10	0.30	<0.01	<0.01	0.00
T/U04326	5.32	516930	7766904	1.00	0.20	<0.01	<0.01	0.00
T/U04327	6.09	516934	7766915	1.00	0.20	<0.01	<0.01	0.00
T/U04328	6.10	516934	7766914	1.00	0.20	<0.01	<0.01	0.00
T/U04329	5.74	516933	7766913	0.80	0.40	<0.01	<0.01	0.00
T/U04330	7.13	516933	7766913	0.90	0.20	<0.01	<0.01	0.00
T/U04331	6.00	516933	7766912	0.80	0.20	<0.01	<0.01	0.00
T/U04332	5.65	516932	7766911	1.10	0.20	<0.01	<0.01	0.00
T/U04333	5.96	516932	7766910	1.00	0.30	<0.01	<0.01	0.00
T/U04334	6.34	516932	7766909	1.00	0.30	<0.01	<0.01	0.00
T/U04335	5.52	516930	7766905	0.84	0.30	<0.01	<0.01	0.00
T/U04336	5.39	516931	7766904	0.90	0.30	<0.01	<0.01	0.00
T/U04337	6.37	516931	7766903	1.00	0.20	<0.01	<0.01	0.00
T/U04338	5.73	516931	7766902	1.10	0.30	<0.01	<0.01	0.00
T/U04339	4.39	516931	7766901	0.87	0.40	<0.01	<0.01	0.00
T/U04340	4.15	516931	7766901	1.00	0.20	<0.01	<0.01	0.00
T/U04341	5.38	516929	7766899	1.37	0.30	<0.01	<0.01	0.00
T/U04344	4.53	516927	7766895	1.00	0.25	<0.01	<0.01	0.00
T/U04345	5.13	516931	7766905	1.00	0.30	<0.01	<0.01	0.00
T/U04346	5.30	516930	7766903	0.70	0.30	<0.01	<0.01	0.00
T/U04347	5.60	516930	7766903	0.30	0.20	<0.01	<0.01	0.00
T/U04348	5.87	516930	7766902	1.00	0.30	<0.01	<0.01	0.00
T/U04349	6.23	516928	7766905	0.90	0.20	<0.01	<0.01	0.00
T/U04350	4.91	516928	7766904	1.00	0.30	<0.01	<0.01	0.00
T/U04351	4.11	516928	7766903	0.90	0.20	<0.01	<0.01	0.00
T/U04352	5.31	516928	7766902	0.20	0.30	<0.01	<0.01	0.00
T/U04353	5.27	516928	7766902	1.00	0.20	<0.01	<0.01	0.00
T/U04354	4.84	516927	7766900	1.07	0.30	<0.01	<0.01	0.00
T/U04355	5.08	516927	7766899	1.00	0.20	<0.01	<0.01	0.00
T/U04356	6.44	516927	7766903	0.80	0.30	<0.01	<0.01	0.00
T/U04357	5.63	516927	7766902	1.26	0.20	<0.01	<0.01	0.00
T/U04358	2.42	516926	7766901	0.00	0.30	<0.01		0.00
T/U04359	2.47	516926	7766901	1.00	0.20		<0.01	0.00
T/U04361	4.38	516926	7766898	1.12	0.20	<0.01	<0.01	0.00
T/U04363	5.93	516927	7766896	0.56	0.20	<0.01	<0.01	0.00
T/U04364	6.42	516927	7766895	0.24	0.20	<0.01	<0.01	0.00
T/U04365	4.52	516927	7766895	1.40	0.20	<0.01	<0.01	0.00
T/U04370	4.79	516928	7766892	1.30	0.20	<0.01	<0.01	0.00
T/U04371	5.69	516927	7766891	0.80	0.20	<0.01	<0.01	0.00
T/U04372	5.35	516927	7766890	1.50	0.20	<0.01	<0.01	0.00
T/U04373	5.73	516927	7766889	1.00	0.20	<0.01	<0.01	0.00
T/U04374	8.16	516926	7766887	0.76	0.20	<0.01	<0.01	0.00
T/U04379	4.61	516924	7766883	1.30	0.20	<0.01	<0.01	0.00
T/U04380	4.73	516924	7766882	0.90	0.20	<0.01	<0.01	0.00
T/U04382	4.65	516924	7766881	1.00	0.20	<0.01	<0.01	0.00

Sample ID (T=original & U=duplicate)	Combined weight (kg)	Easting (mE)	Northing (mN)	Sample Length (m)	Sample width (m)	Original Sample Grade (Au g/t)	Duplicate Sample Grade (Au g/t)	Average Grade (Au g/t)
T/U04383	4.53	516925	7766880	0.90	0.20	<0.01	<0.01	0.00
T/U04384	4.35	516925	7766879	0.70	0.20	<0.01	<0.01	0.00
T/U04385	3.52	516926	7766878	0.80	0.20	<0.01	<0.01	0.00
T/U04386	6.23	516926	7766878	1.05	0.20	<0.01	<0.01	0.00
T/U04387	6.41	516926	7766877	0.84	0.20	<0.01	<0.01	0.00
T/U04388	4.94	516925	7766876	1.00	0.20	<0.01	<0.01	0.00
T/U04389	5.06	516924	7766875	1.00	0.20	<0.01	<0.01	0.00
T/U04390	4.65	516926	7766877	0.80	0.20	<0.01	<0.01	0.00
T/U04391	4.52	516927	7766878	1.00	0.20	<0.01	<0.01	0.00

Appendix 2.

Table 2.1 Old Pirate Resource Estimation without utilising a top-cut. Refer release dated 16/04/2012 for further details.

All Vein Models	Tonnes	Gold (g/t)	Ounces
Indicated	347,000	5.31	59,200
Inferred	1,327,000	11.86	505,800
Total	1,673,000	10.50	565,000
High Grade Vein Models Only	Tonnes	Gold (g/t)	Ounces
Indicated	132,000	7.74	32,800
Inferred	354,000	22.64	257,600
Total	486,000	18.60	290,400

*Note - totals may vary due to rounding.

Table 2.2 Old Pirate Resource Estimation with utilising 300g/t top-cut. Refer release dated 16/04/2012 for further details.

All Vein Models	Tonnes	Gold (g/t)	Ounces
Indicated	347,000	5.25	58,500
Inferred	1,327,000	8.65	368,900
Total	1,673,000	7.95	427,400
High Grade Vein Models Only	Tonnes	Gold (g/t)	Ounces
Indicated	132,000	7.62	32,200
Inferred	354,000	17.52	199,400
Total	486,000	14.84	231,600

*Note - totals may vary due to rounding.