

14 June, 2012

High Grade Gold Drill Results Extend Buccaneer

***31 metres averaging 3.68g/t gold including
14 metres averaging 7.56g/t gold***

ABM Resources NL ("ABM" or "The Company") is pleased to announce the first results of the season from extensional drilling at the Company's 2.67 million ounce gold Buccaneer Porphyry Deposit.

Highlights from Buccaneer

- High grade intercepts on the south east extensions of Buccaneer in BCRC100090 ending in mineralisation with:
 - 31 metres averaging 3.68g/t gold (0.5g/t cut-off) including:
 - 14 metres averaging 7.56g/t gold (1.1g/t cut-off).
- Recent review of 2011 drill core from Buccaneer reveals considerably more visible free gold in veins than previously observed prompting further review of higher grade zones.

Update from Old Pirate High Grade Gold Deposit:

- Exploration in full swing with over 8000 samples consigned to the laboratory pending assay:
 - 40 holes (>6500 metres) of an initial 43 hole infill and extensional drill campaign at Old Pirate completed and pending assay.
 - More than 2000 samples of further vein horizons at Old Pirate have been collected and are pending assay.

Darren Holden, Managing Director, said, "The first 2012 drill assay results from Buccaneer have intersected higher-grade material. These results, combined with a recent review of core drilled in 2011, has prompted ABM to conduct a more detailed study into higher grade sections of Buccaneer. As a result, the Company is considering re-optimising the resource work focusing on higher grade zones as well as the bulk tonnage target scenarios already reported."

Buccaneer 2012 Programs

The Twin Bonanza Gold Project includes both the Old Pirate High Grade Gold Deposit and the Buccaneer Porphyry Gold Deposit. The 2012 field programs are primarily focused on advancing the high grade Old Pirate Deposit. However, several areas at Buccaneer remain untested where the Company is drilling to infill and extend the deposit. The first round of results is attached in Appendix 1.

Hole BCRC100090 was drilled to test the south-eastern contact of the Buccaneer Porphyry Deposit and encountered a wide zone of high grade mineralisation. The hole intersected intense chlorite altered zones and quartz veins at a down hole depth of 354 metres (approximately 290 metres below surface) with the hole ending in mineralisation at 396 metres (Figure 1 & Figure 2). This zone of mineralisation is possibly a new structurally controlled zone. The Company also reports results from BCRC100091, BCRC100092 and BCRC100093 which were all drilled to test possible extensions. All holes intersected mineralised zones (Appendix 1) with a further 5 holes drilled at Buccaneer pending assay.

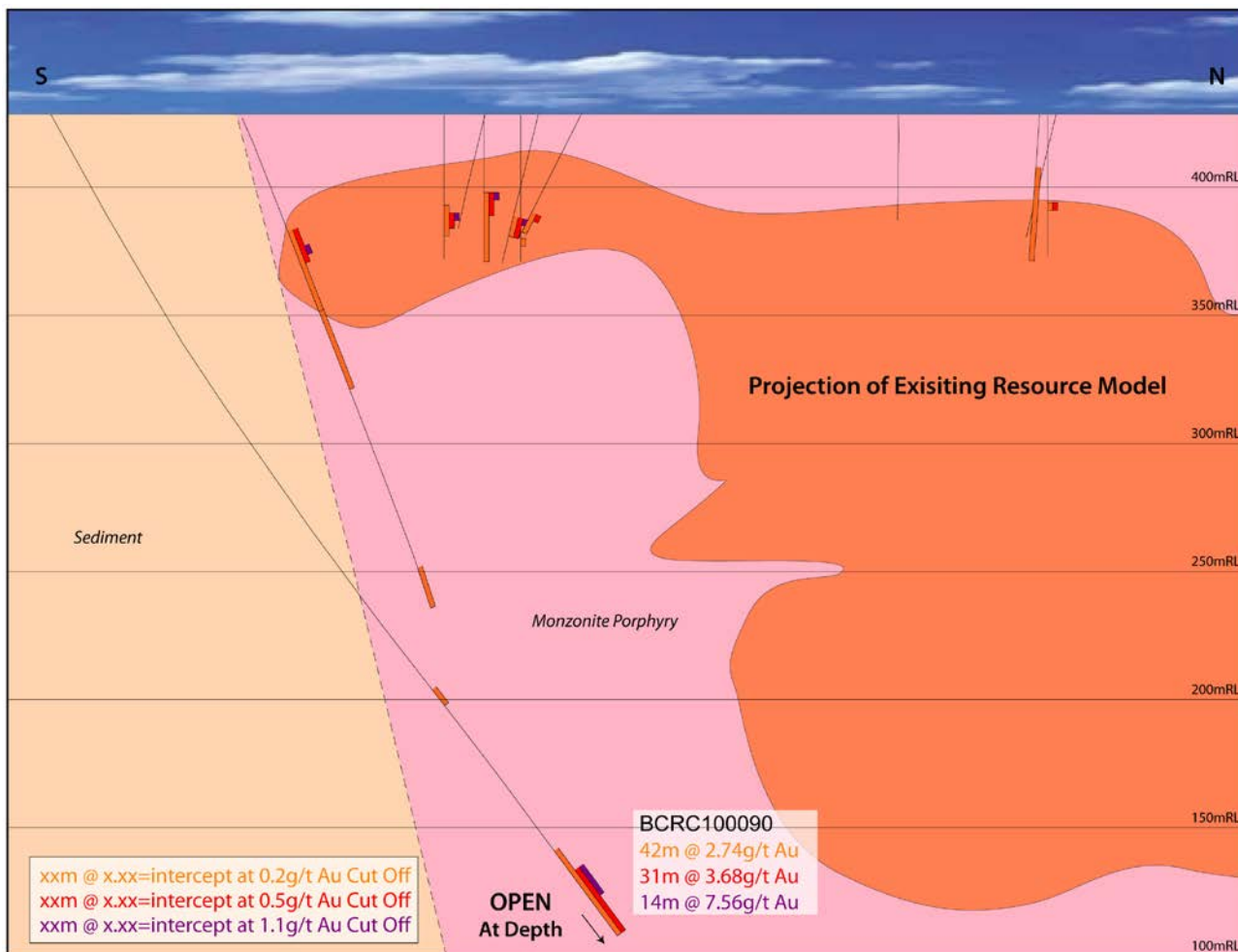


Figure 1. BCRC100090 cross-section showing the new mineralisation and projection of the existing resource model.

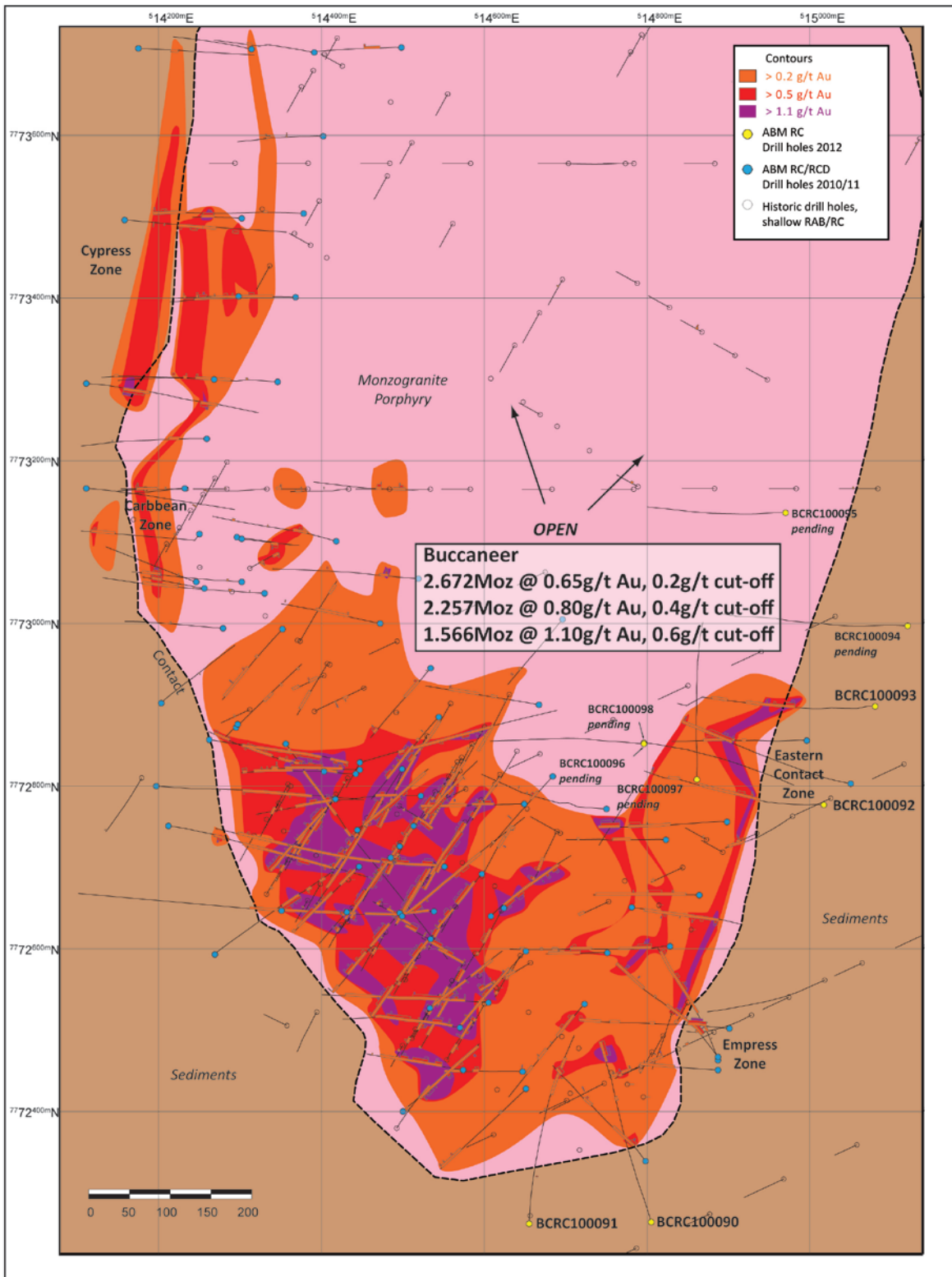


Figure 2. Updated schematic composite contour map of the Buccaneer Porphyry showing all 2012 drill holes to date.

Geological Review of Buccaneer Porphyry and Structurally controlled high grade zones

A recent review of the 2011 drill core at Buccaneer by a researcher from The University of Western Australia and ABM geologists has revealed considerably more visible gold than previously noted. These occurrences were observed in several holes including BCRD100005, drilled in 2011, where multiple visible gold occurrences are observed throughout a zone previously reported with 41 metres averaging 3.54g/t gold. The gold sits within shallowly dipping quartz veins and breccia zones. The Company is

commencing a review of these higher grade zones with a view to potentially re-optimising the existing resource estimation work.

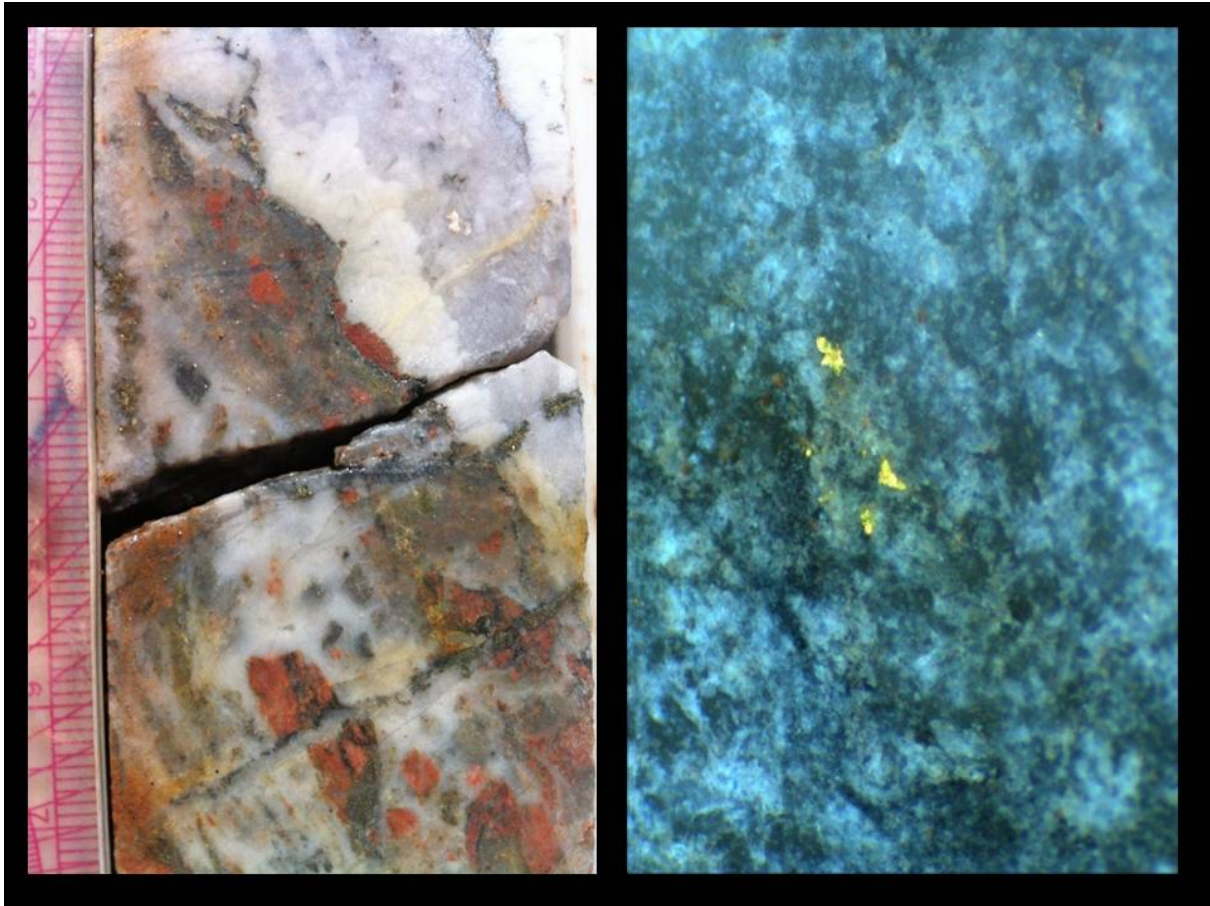


Figure 3: Quartz veins in Buccaneer Porphyry hosting visible gold from BCRD100005 drilled in 2011 (assays reported 19/01/2012)

Figure 4: Visible gold from BCRD100005 with gold grains approximately 0.3mm across.

Update from Old Pirate

ABM is currently conducting a drilling and surface sampling / trenching campaign at Old Pirate. The aim of the work is to infill the existing resource for resource category upgrade, and to extend the resource into target areas not previously tested. To date the Company has completed 40 holes for approximately 6500 metres of drilling and exposed and collected more than 2000 samples from veins as part of the longitudinal trenching program. ABM intends to update the resource model (currently 565,000 ounces inferred and indicated resource (uncut) grading 10.5g/t gold) and the scoping study based on the new extensional results.

About ABM Resources

ABM Resources is an exploration company developing several gold discoveries in the Tanami-Arunta region of the Northern Territory of Australia. The Company has a multi-tiered approach to exploration and development with a combination of high grade potentially short-term production scenarios such as Old Pirate, large scale discoveries such as Buccaneer, and regional exploration discoveries such as the Kroda Gold Project.

ABM Resources is well capitalised to achieve its milestones in 2012 and into 2013 with over \$26M in cash (as of quarterly report dated 31st March 2012).

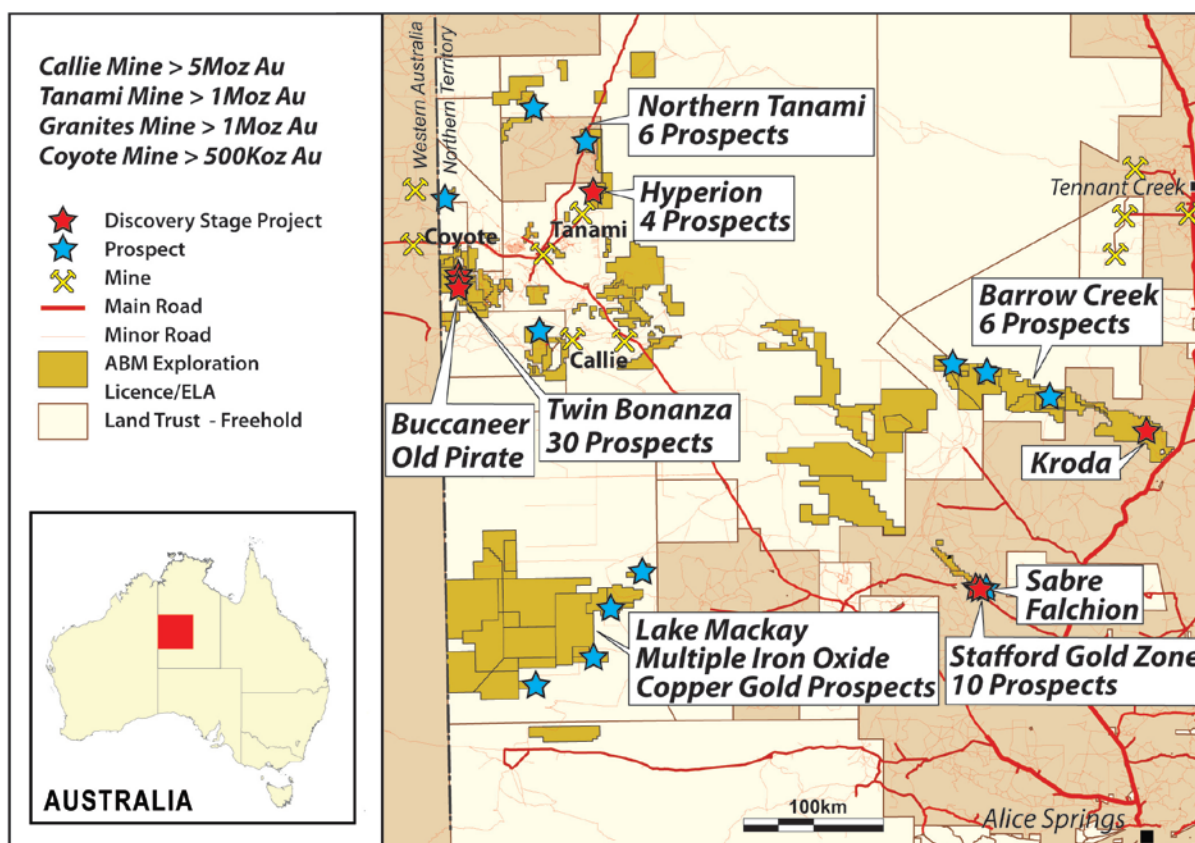


Figure 5. ABM Project Location Map Northern Territory.

Signed

Darren Holden – Managing Director

Competent Persons Statement

The information in this report that relates to Exploration Results, Mineral Resources or Ore Reserves is based on information compiled by Mr Darren Holden who is a Member of The Australasian Institute of Mining and Metallurgy. Mr Holden is a full time employee of ABM Resources NL and has sufficient experience which is relevant to the style of mineralisation and type of deposit under consideration and to the activity which he is undertaking to qualify as a Competent Person as defined in the 2004 Edition of the “Australasian Code for Reporting Exploration Results, Mineral Resources and Ore Reserves”. Mr Holden consents to the inclusion in the documents of the matters based on this information in the form and context in which it appears.

For Further Information Please Contact

Jutta Zimmermann
CFO / Company Secretary
+61 8 9423 9777

Darren Holden
Managing Director
+61 8 9423 9777

Berdine Mastaglia
Investor Relations Manager
+61 8 9423 9777

APPENDIX 1. Details of 2012 drill results from the Buccaneer Porphyry Deposit.

Table 1.1. Significant intercepts for holes at the Buccaneer extensions at 0.2g/t gold cut-off.

Hole ID	Depth From (m)	Depth To (m)	Interval (m)	Gold (g/t)
BCRC100090	274	282	8	0.25
BCRC100090	354	396	42	2.74
BCRC100091	301	393	92	0.24
BCRC100091	322	367	45	0.33
BCRC100092	148	274	126	0.24
BCRC100092	214	237	23	0.26
BCRC100092	317	341	24	0.28
BCRC100092	378	381	3	3.47
BCRC100093	175	263	88	0.33
BCRC100093	239	250	11	0.32
BCRC100093	298	327	29	0.22
BCRC100093	306	318	12	0.36

Significant intercepts calculated for holes BCRC100090, BCRC100091, BCRC100092 and BCRC100093 at a 0.2g/t gold cut-off, minimum 2 metre width and maximum 20 metre internal dilution. All Samples processed at ALS Global Laboratories in Alice Springs (NT) and Perth (WA) using Fire Assay for gold.

Table 1.2. Significant intercepts for holes at the Buccaneer extensions at 0.5g/t gold cut-off.

Hole ID	Depth From (m)	Depth To (m)	Interval (m)	Gold (g/t)
BCRC100090	365	396	31	3.68
BCRC100091	114	116	2	1.21
BCRC100092	163	167	4	1.14
BCRC100092	180	195	15	0.55
BCRC100092	378	381	3	3.47
BCRC100093	175	192	17	0.69
BCRC100093	209	213	4	0.84
BCRC100093	224	226	2	2.27

Significant intercepts calculated for BCRC100090, BCRC100091, BCRC100092 and BCRC100093 at a 0.5g/t gold cut-off, minimum 2 metre width and maximum 10 metre internal dilution. All Samples processed at ALS Global Laboratories in Alice Springs (NT) and Perth (WA) using Fire Assay for gold.

Table 1.3. Significant intercepts for holes at the Buccaneer extensions at 1.1g/t gold cut-off.

Hole ID	Depth From (m)	Depth To (m)	Interval (m)	Gold (g/t)
BCRC100090	365	379	14	7.56
BCRC100091	344	346	2	2.21
BCRC100092	165	167	2	1.66
BCRC100092	378	381	3	3.47
BCRC100093	176	181	5	1.46
BCRC100093	224	226	2	2.27

Significant intercepts calculated for holes BCRC100090, BCRC100091, BCRC100092 and BCRC100093 at a 1.1g/t gold cut-off, minimum 2 metre width and maximum 5 metre internal dilution. All Samples processed at ALS Global Laboratories in Alice Springs (NT) and Perth (WA) using Fire Assay for gold.

Appendix 2. Twin Bonanza Gold Camp Drill Hole Status

Hole ID	Prospect	Easting (m)	Northing (m)	Elevation above sea level	Inclination (degrees)	Azimuth (degrees)	Depth (metres)	Target Zone	Results Status
BCRC100090	Buccaneer	514805	7772264	429	-60	340	396	Buccaneer Extensions	Released
BCRC100091	Buccaneer	514655	7772262	433	-60	360	450	Buccaneer Extensions	Released
BCRC100092	Buccaneer	515017	7772777	432	-60	270	396	Buccaneer Extensions	Released
BCRC100093	Buccaneer	515080	7772898	432	-60	270	396	Buccaneer Extensions	Released
BCRC100094	Buccaneer	515120	7772997	431	-60	270	400	Buccaneer Extensions	Pending
BCRC100095	Buccaneer	514970	7773136	431	-60	270	396	Buccaneer Extensions	Pending
BCRC100096	Buccaneer	514796	7772852	431	-60	270	396	Buccaneer Extensions	Pending
BCRC100097	Buccaneer	514861	7772808	431	-60	356.5	396	Buccaneer Extensions	Pending
BCRC100098	Buccaneer	514796	7772853	431	-60	90	396	Buccaneer Extensions	Pending

Appendix 3.

Table 1 Buccaneer Gold Deposit Inferred Resource. Refer release dated 16/04/2012 for further details.

Cut-off Grade (g/t)	Million Tonnes(Mt)	Gold Grade (g/t)	Contained Gold (Million Ounces (Moz))
0.2	127.9	0.65	2.672
0.4	88.3	0.80	2.257
0.6	44.1	1.10	1.566

Note – Million Tonnes (MT) rounded to 3 significant figures; gold grade rounded to 3 significant figures and Million Ounces (Moz) rounded to 3 significant figures. Refer to release dated 16/04/2012 for further details.

Table 2 Old Pirate Resource Estimation without utilising a top-cut. Refer release dated 16/04/2012 for further details.

All Vein Models	Tonnes	Gold (g/t)	Ounces
Indicated	347,000	5.31	59,200
Inferred	1,327,000	11.86	505,800
Total	1,673,000	10.50	565,000
High Grade Vein Models Only	Tonnes	Gold (g/t)	Ounces
Indicated	132,000	7.74	32,800
Inferred	354,000	22.64	257,600
Total	486,000	18.60	290,400

*Note - totals may vary due to rounding.

Table 3 Old Pirate Resource Estimation with utilising 300g/t top-cut. Refer release dated 16/04/2012 for further details.

All Vein Models	Tonnes	Gold (g/t)	Ounces
Indicated	347,000	5.25	58,500
Inferred	1,327,000	8.65	368,900
Total	1,673,000	7.95	427,400
High Grade Vein Models Only	Tonnes	Gold (g/t)	Ounces
Indicated	132,000	7.62	32,200
Inferred	354,000	17.52	199,400
Total	486,000	14.84	231,600

*Note - totals may vary due to rounding.