

3rd May, 2012

2012 Exploration Season Underway

ABM Resources NL ("ABM" or "The Company") is pleased to announce that the 2012 exploration season is underway.

- Extensional trenching program underway at Old Pirate targeting an additional 3 kilometres of prospective vein horizons not yet included in the high-grade 427,400 ounce resource including:
 - Extending western limb veins under cover to the north and south (current results include 102 metres strike length averaging 32.62g/t gold open to the north and south).
 - Extending Old Pirate South (eastern limb) to the north to link current known vein strike length of 69 metres averaging 49.9g/t gold with a 62.6g/t gold rock chip in an outcropping vein 200 metres along strike.
 - Testing a second Old Pirate South vein not yet included in the resource where previous selective rock chip sampling results included grades up to 2163g/t gold, 1111g/t gold and 108g/t gold.
 - Testing other veins not yet included in the resource located approximately 20m and 40m to the west of the main resource in areas where previous rock-chip results returned grades of 9.5g/t gold, 9.1g/t gold, 7.9g/t gold and 6.0g/t gold.
 - Testing other prospective veins to the south of Old Pirate where previous rock-chip results returned 16.6g/t gold, 6.5g/t gold and 4.1g/t gold.
- Drilling commenced at Twin Bonanza Gold Project
 - Initial drilling has commenced focusing on extensional work at the Caribbean and Cypress Zones at the 2.67Moz Buccaneer Porphyry Gold Deposit as well as other peripheral Buccaneer targets.
 - Extensional and in-fill drilling commencing shortly at Old Pirate High-Grade Gold Deposit.
- Old Pirate Pit Optimisation and Scoping Study underway.
- Regional work planned to commence shortly including:
 - Airborne electromagnetic geophysical survey at the eastern Barrow Creek (Kroda and Tulsa trends), Reynolds Range (Stafford Gold Zone) and Bonita (Swampy Anomaly) targets.

- Regional ionic leach geochemistry surveys to generate new drill targets on the wider Twin Bonanza Gold Camp, Mallie / Tanami Downs project area, Bonita and Lake Mackay areas.
- Aiming to test 15 regional targets with drilling throughout the Company's extensive portfolio in 2012.

Darren Holden, Managing Director of ABM Resources said, "We are delighted to be underway with our 2012 intensive exploration season. The work initially involves extensional drilling and trenching at Buccaneer and Old Pirate, respectively.

Following on from the success of the 750 metre 2011 trenching program, we are now targeting a further 3 kilometres of strike length of prospective veins not yet included in the 427,400 ounce maiden resource at Old Pirate. The systematic trenching work in 2011 was the break-through technique that enabled us to understand the spatial and statistical distribution of gold at Old Pirate and, as a result, this new trenching program is intended to identify significant extensions to the known resource.

Our regional programs are also commencing and provide the Company with substantial upside in one of the most under explored gold belts in the world."

2012 Extensional Work and Mining Studies at the Old Pirate High Grade Deposit

ABM recently released a maiden resource (Inferred + Indicated) at the Old Pirate Deposit of 427,400 ounces of gold grading 7.95g/t gold (top cut) or 565,000 ounces of gold averaging 10.5g/t gold (uncut) (refer Appendix 1). This resource was based on both drilling and surface trench sampling. Old Pirate is characterised by coarse gold producing a statistical nugget effect. The 2011 longitudinal trenching program, as well as proving a valuable prospecting technique, helped develop an increased understanding of the statistical and spatial distribution of gold. As a result the Company has embarked on extending this program. Through integration of detailed mapping conducted in 2011 along with rock-chip sampling results the Company has prioritised a further 3 kilometres of combined strike length of prospective shale horizons known to contain high-grade gold veins. These are shown in Figure 1 and Figure 2 below.

The extensional trenching program, noted in Figures 1 and 2, has commenced and drilling is scheduled to start shortly.

ABM has contracted Entech Mining Engineering Consultants to conduct an initial stage 1 pit optimisation and preliminary scoping study of the economics of the Old Pirate Deposit. This work is expected to be completed within a few weeks.

In January 2012, ABM Resources and Tanami Gold NL entered into a Memorandum of Understanding to work collaboratively to assess the potential of processing high grade ores from Old Pirate at the Coyote Gold Mine located 45 kilometres from Old Pirate. Initial collaborative meetings were held and on-site assessment including planning for pre-mining in-fill drilling will commence shortly. The two companies are considering a bulk sample of between 5,000 and 10,000 tonnes of near surface vein material to be processed at the Coyote Gold Mine in the coming months.

Recently, a base-line flora / fauna survey was completed at Old Pirate. The results of this survey form a key part of future environmental impact studies at Old Pirate and mineral lease applications.

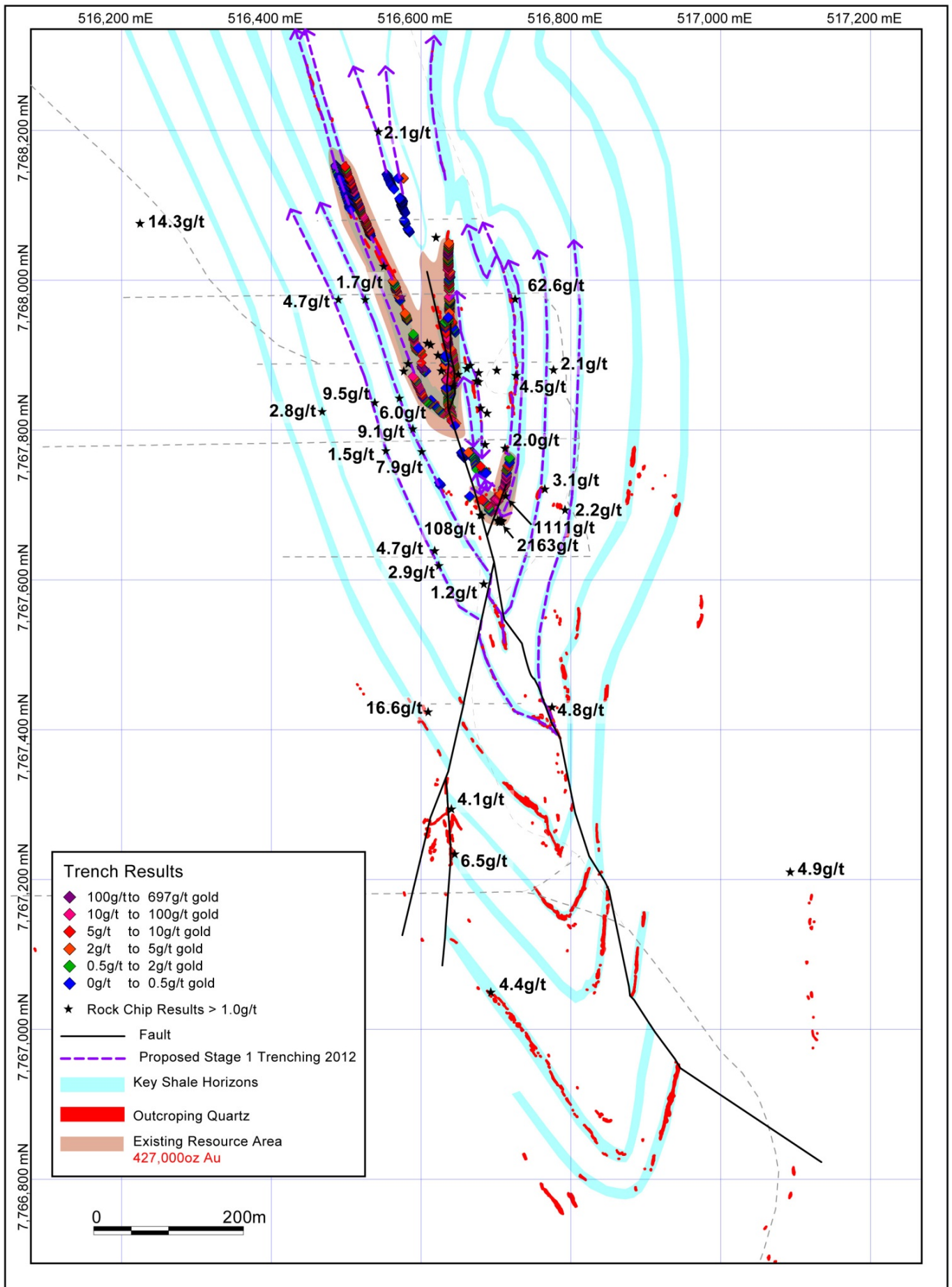


Figure 2. Proposed trenching for further step-out in the wider Old Pirate Project area.

2012 Extensional Work at Buccaneer Porphyry Gold Deposit

ABM recently announced a resource upgrade for the Buccaneer Porphyry Gold Deposit (refer Appendix 1). This work included resource contributions from the Cypress and Caribbean Zones located on the western margin of the Buccaneer Porphyry body. ABM has commenced drill testing with the aim to extend the Caribbean and Cypress Zones and is also testing a conceptual target in the centre of the Buccaneer Porphyry body (north of the existing resource) as well as extensions to the Eastern Zone.

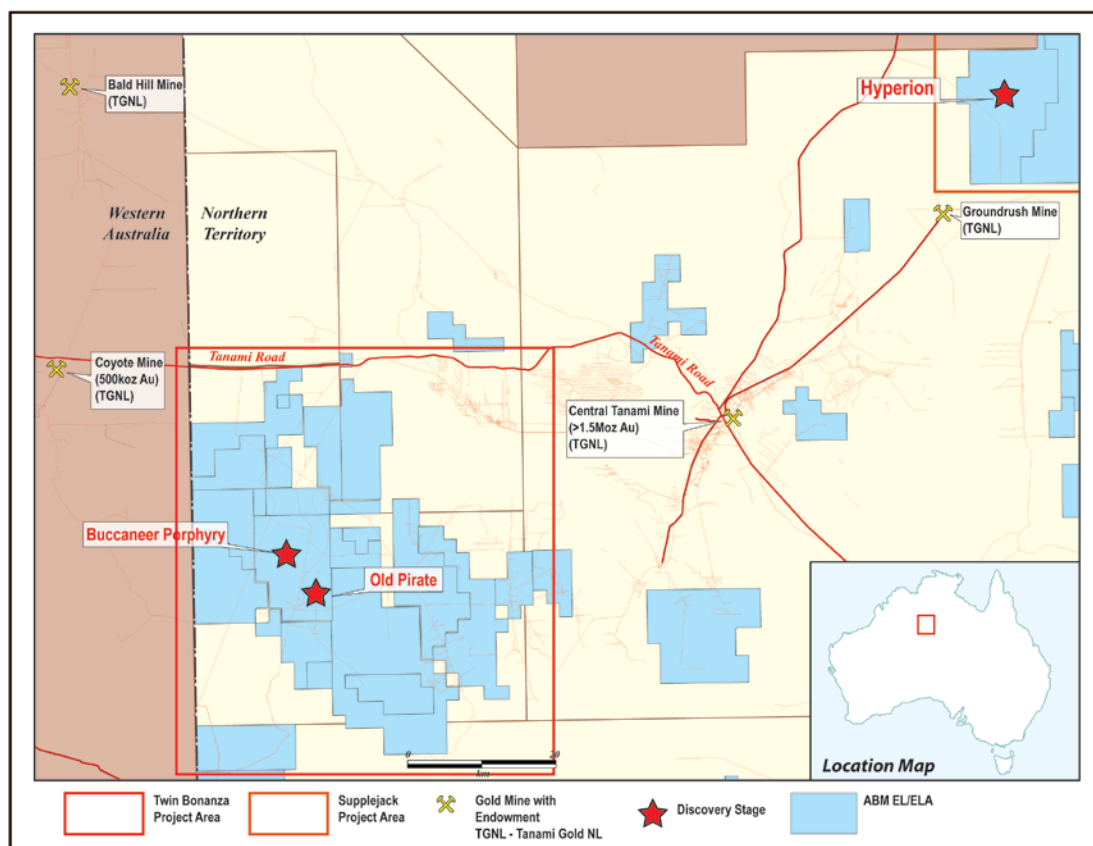


Figure 3. Twin Bonanza location map

2012 Regional Exploration Work

North Arunta Regional Project Area Geophysics

In 2011 ABM reported strong drill results from the Kroda Gold Project such as **57 metres averaging 3.83g/t gold including 29 metres averaging 6.38g/t gold** (refer announcement 27/09/2011). Kroda consists of a 14 kilometre combined strike length geochemistry anomaly. Recently ABM identified a second anomalous gold geochemical trend (known as the Tulsa Trend) approximately 10 kilometres long and up to 1.5 kilometres wide. ABM has signed a services agreement with Fugro Airborne Surveys to fly an airborne electromagnetic survey over the Kroda and Tulsa trends. The aim of the survey is to highlight conductive clay rich alteration zones along regional structures for drill testing. In addition, there is known base metal mineralisation (copper and tin) in the area and the survey may also highlight areas for drill testing for such metals.

ABM is also flying airborne electromagnetics at the Reynolds Range / Stafford Gold Zone project area which includes the Sabre Gold Prospect where drilling in 2010 returned 35 metres averaging 2.02g/t gold (refer to release 24/05/2010) and the Reward Copper-Silver prospect where surface sampling returned rock-chips up to 17.8% copper, 271g/t silver and 0.55g/t gold (refer to release 13/05/2010).

ABM's recently granted Bonita project area (Figure 4) includes a 6 kilometre diameter magnetic anomaly known as the Swampy Target at the intersection of tectonic scale geological structures. This area will also be flown using the airborne electromagnetic techniques. ABM recently received

notification from the NT Department of Resources that the Bonita area survey will be partially paid for by the Northern Territory government under the Geophysical Collaboration Program.

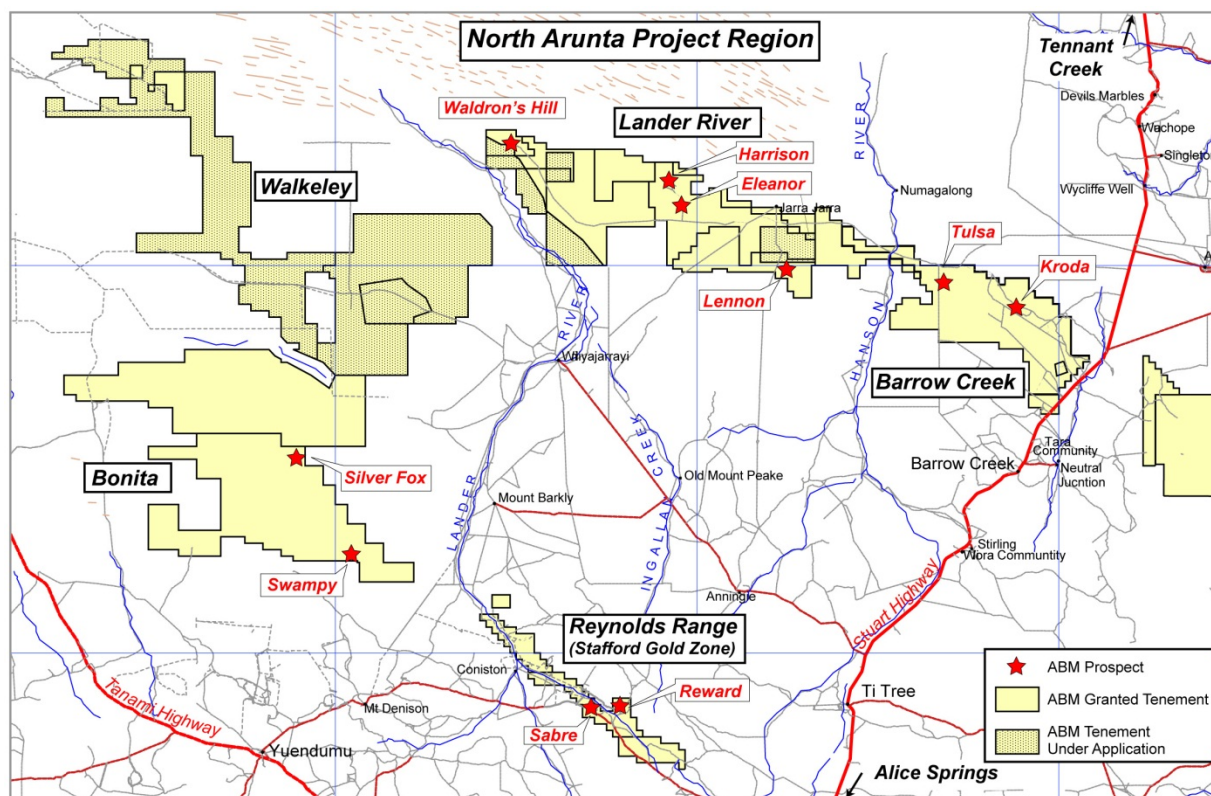


Figure 4. North Arunta Regional Project Area.

Regional Geochemistry Programs

In 2011, ABM trialed several low-level detection geochemical techniques capable of detecting ore-systems through surficial sedimentary cover. The Company has selected Ionic Leach Geochemistry as the best technique for regional exploration. As a result of this orientation study, the Company is planning to carry out surveys at Twin Bonanza Gold Camp, Mallie / Tanami Downs Project areas, Northern Tanami, North Arunta and Lake Mackay areas in 2012.

Regional Drilling Programs

In addition to extensional and infill drilling at Buccaneer and Old Pirate, ABM intends to drill-test approximately 15 regional exploration targets in 2012. This will generally involve an initial 3 to 5 drill-hole program per target.

About ABM Resources

ABM Resources is an exploration company developing several gold discoveries in the Tanami-Arunta region of the Northern Territory of Australia. The Company has a multi-tiered approach to exploration and development with a combination of high grade potentially short-term production scenarios such as Old Pirate, large scale discoveries such as Buccaneer, and regional exploration discoveries such as the Kroda Gold Project. In addition, ABM Resources is committed to regional exploration programs throughout its extensive holdings. ABM Resources is well capitalised to achieve its milestones in 2012 and into 2013 with over \$26M in cash (as of quarterly report dated March 31, 2012).

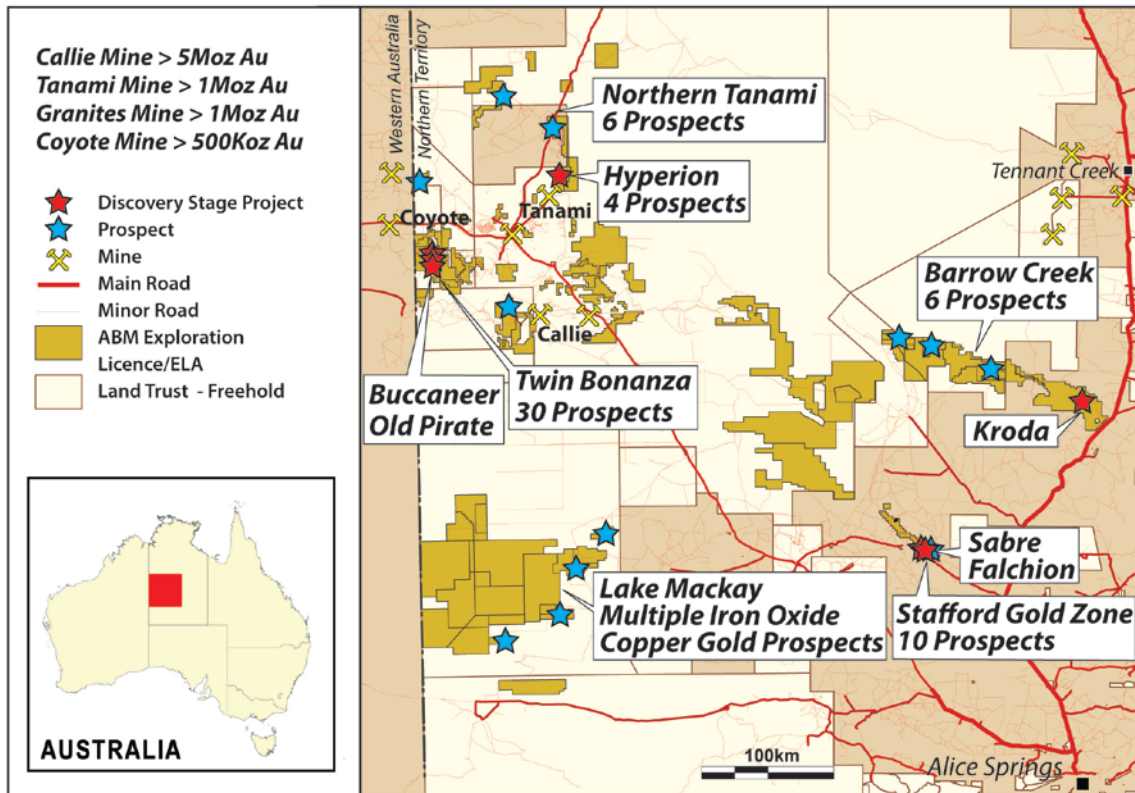


Figure 5. ABM Project Location Map Northern Territory

Signed

Darren Holden – Managing Director

Competent Persons Statement

The information in this report that relates to Exploration Results, Mineral Resources or Ore Reserves is based on information compiled by Mr Darren Holden who is a Member of The Australasian Institute of Mining and Metallurgy. Mr Holden is a full time employee of ABM Resources NL and has sufficient experience which is relevant to the style of mineralisation and type of deposit under consideration and to the activity which he is undertaking to qualify as a Competent Person as defined in the 2004 Edition of the “Australasian Code for Reporting Exploration Results, Mineral Resources and Ore Reserves”. Mr Holden consents to the inclusion in the documents of the matters based on this information in the form and context in which it appears.

For Further Information Please Contact

Jutta Zimmermann
CFO / Company Secretary
+61 8 9423 9777

Darren Holden
Managing Director
+61 8 9423 9777

Berdine Mastaglia
Investor Relations Manager
+61 8 9423 9777

Appendix 1 - ABM Resources - JORC Compliant Resources

(Refer to press release dated April 16th, 2012 for full details.)

Table 1 Old Pirate Resource Estimation without utilising a top-cut.

All Vein Models	Tonnes	Gold (g/t)	Ounces
Indicated	347,000	5.31	59,200
Inferred	1,327,000	11.86	505,800
Total	1,673,000	10.50	565,000
High Grade Vein Models Only	Tonnes	Gold (g/t)	Ounces
Indicated	132,000	7.74	32,800
Inferred	354,000	22.64	257,600
Total	486,000	18.60	290,400

*Note - totals may vary due to rounding.

Table 2 Old Pirate Resource Estimation with utilising 300g/t top-cut

All Vein Models	Tonnes	Gold (g/t)	Ounces
Indicated	347,000	5.25	58,500
Inferred	1,327,000	8.65	368,900
Total	1,673,000	7.95	427,400
High Grade Vein Models Only	Tonnes	Gold (g/t)	Ounces
Indicated	132,000	7.62	32,200
Inferred	354,000	17.52	199,400
Total	486,000	14.84	231,600

*Note - totals may vary due to rounding.

Table 3 Buccaneer Porphyry Gold Deposit Resource Update at varying cut-offs

0.2g/t cut off	Million Tonnes	Gold (g/t)	Million Ounces
Indicated	34.0	0.64	0.702
Inferred	93.9	0.65	1.970
Total	127.9	0.65	2.672
0.4g/t cut-off	Million Tonnes	Gold (g/t)	Million Ounces
Indicated	24.2	0.77	0.600
Inferred	64.1	0.80	1.657
Total	88.3	0.80	2.257
0.6g/t cut-off	Million Tonnes	Gold (g/t)	Million Ounces
Indicated	12.3	1.04	0.412
Inferred	31.8	1.13	1.154
Total	44.1	1.10	1.566

*Note - totals may vary due to rounding.

Table 4 Hyperion Gold Project Resource Estimation without top-cut

0.8g/t cut off	Tonnes	Gold (g/t)	Ounces
Hyperion Central	2,209,000	2.14	152,100
Hyperion South	768,000	2.71	66,800
Total	2,977,000	2.29	219,000
2g/t cut-off	Tonnes	Gold (g/t)	Ounces
Hyperion Central	875,000	3.36	94,400
Hyperion South	272,000	5.37	47,000
Total	1,147,000	3.83	141,400

*Note - totals may vary due to rounding.

Table 5 Hyperion Gold Project Resource Estimation with 50g/t top-cut

0.8g/t cut off	Tonnes	Gold (g/t)	Ounces
Hyperion Central	2,209,000	2.06	146,600
Hyperion South	768,000	2.25	55,500
Total	2,977,000	2.11	202,200
2g/t cut-off	Tonnes	Gold (g/t)	Ounces
Hyperion Central	875,000	3.17	89,100
Hyperion South	272,000	4.08	35,700
Total	1,147,000	3.38	124,800

*Note - totals may vary due to rounding.