

Xped Limited



Supplementary Presentation Release

Xped Limited (**ASX: XPE**) ("**Xped**" or "**the Company**") is pleased to release the attached Xped presentation being used for business development and investor meetings. This is a revised version of the release sent yesterday.

Xped Media Coverage

The Company would also like to make the market aware that it was featured on Foxtel Channel 602 (Sky Business) at 2:30 pm (est) on Monday, January 30, 2017. A copy of this live interview with Xped Managing Director "Mr. Martin Despain" is available on the following URL:

<https://vimeo.com/201764873>

The Company was featured in an article on Monday, January 24 in "The Australian Business Review" featuring Xped's maiden licensing agreement with Lenze was also published. A copy of this article is available at the following URL:

<http://www.xped.com/irm/content/media-coverage.aspx?RID=387>

Analyst Coverage

The Company would also like to make its shareholders aware that "TMT Analytics" have initiated coverage on the company and posted the following "Flash Note" on the company:

<http://www.xped.com/irm/content/analyst-coverage.aspx?RID=437>

Xped Limited



ASX:XPE

ABOUT XPED

Xped is an Australian Internet of Things (“IoT”) technology business. Xped has developed revolutionary and patent-protected technology that allows any consumer, regardless of their technical capability, to connect, monitor and control devices and appliances found in our everyday environment. It’s as simple as two people shaking hands. By enabling the Internet of Things, Xped’s ADRC platform will bring benefit to Manufacturers, Retailers, Service Providers, and Consumers.

At Xped, we’re **Making Technology Easy Again**

FOR MORE INFORMATION:

Contact Xped Limited

ABN 89 122 203 196
Level 6, 412 Collins Street
Melbourne VIC 3000

T 03 9642 0655
F 03 9642 5177
E info@xped.com
www.xped.com



CORPORATE ENQUIRIES:

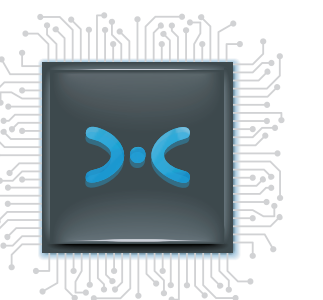
Cameron Low
T 03 9225 5389
E ir@xped.com



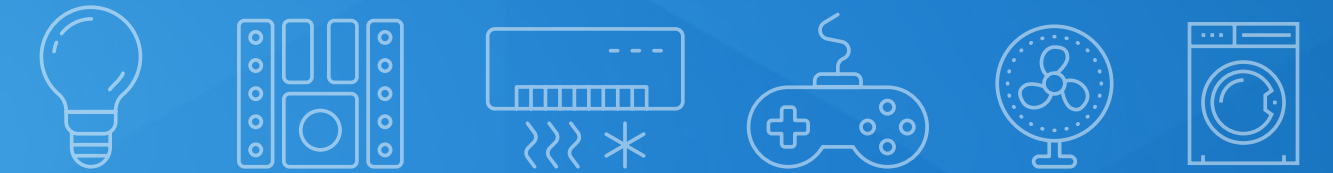
Strategy, Focus and Growth - Update

XPED COMPANY PRESENTATION
VERSION 1.1 // FEBRUARY 2017

xped



DISCLAIMER



This presentation is not a prospectus nor an offer for securities in any jurisdiction nor a securities recommendation. The information in this presentation is an overview, is based on publicly available information and internally developed data, and does not contain all information necessary for investment decisions. In making investment decisions in connection with any acquisition of securities, investors should rely upon their own examination of the assets and consult their own legal, business and/or financial advisors and should not be relied on in connection with a decision to purchase or sell for any securities.

The information contained in this presentation has been prepared in good faith by Xped Limited however no representation nor warranty expressed or implied is made as to the accuracy, correctness, completeness or adequacy of any statements, estimates, opinions or other information contained in this presentation.

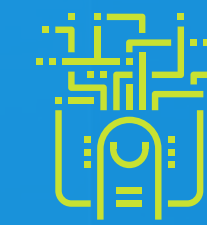
To the maximum extent permitted by law, Xped Limited their directors, officers, employees and agents disclaim liability for any loss or damage which may be suffered by any person through the use or reliance on anything contained in or omitted from this presentation. Certain information in this presentation refers to the intentions of Xped Limited but these are not intended to be forecasts, forward looking statements or statements about future matters for the purposes of the Corporations Act or any other applicable law.

The occurrence of events in the future are subject to risks, uncertainties and other factors that may impact Xped Limited actual results, performance or achievements to differ from those referred to in this presentation. Accordingly, Xped Limited, their directors, officers, employees and agents do not give any assurance or guarantee that the occurrence of the events referred to in this presentation will actually occur as contemplated.

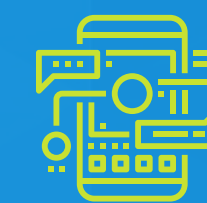
WHO IS XPED?



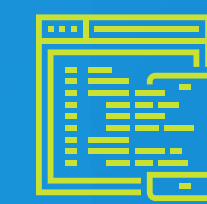
Xped is a technology and solutions provider that is focused on IoT infrastructure. By enabling the Internet of Things, Xped's Infrastructure Platform (XIP) will bring benefits to manufacturers, retailers, service providers and consumers.



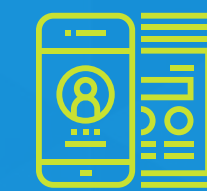
Tap: Device discovery, provisioning and interoperability



Xped App: Device browser that delivers command and control to the end user



RML: Device description language based on XML



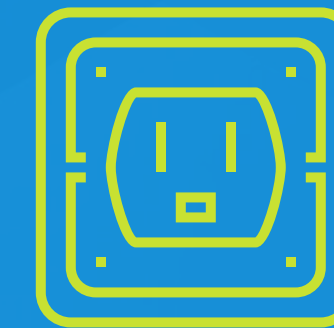
Gateway software: Business logic, rules engine, notifications and device management solutions

INTERNET OF THINGS



The Internet of Things (IoT) is about connecting electronic devices (Things) to each other and to people; so that these Things can communicate and exchange data, and people can interact with either the Things or the Data.

Things are anything and everything that has an on/off switch and some form of connectivity.



POTENTIAL VALUE OF THE IoT

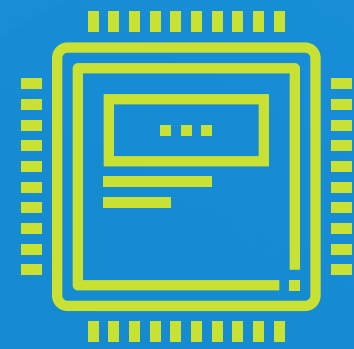


9 business segments
give us a cross-
sector view of a total
potential impact of
\$3.9 - 11.1 Trillion
per year from 2025.

Source: 'The Internet of Things: Mapping the Value beyond the Hype', McKinsey Global Institute June 2015.

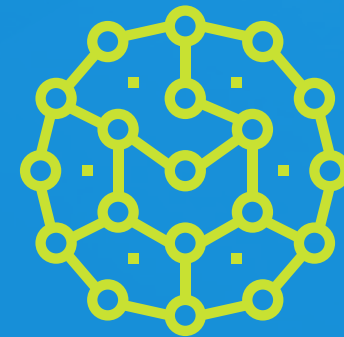
Home	Chore automation and security	\$200B-350B
Human	Health and fitness	\$170B-1.6T
Factory	Operations and equipment optimisation	\$1.2T-3.7T
Retail	Point of sale and inventory management	\$410B-1.2T
Buildings	Security and energy	\$70B-150B
Transportation	Logistics and navigation	\$560B-850B
Cities	Public health and transportation	\$930B-1.7T
Worksite	Operations, health and safety optimization	\$160B-930B
Vehicles	Autonomous vehicles and maintenance	\$210B-740B

IOT REVENUE STREAMS



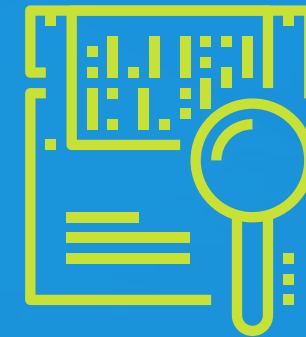
Hardware

Selling connected devices and gateways that collect data



Infrastructure

Command and control, aggregating, securing and delivering the data



Analytics

Providing access and insights to 3rd parties

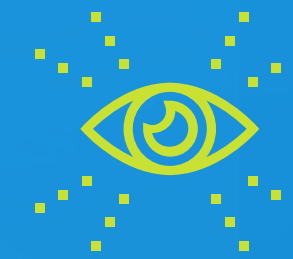
DATA MONETIZATION

- > Rich Media Advertising
- > IoT Vendors and e-Commerce
- > Insurance and Service Companies
- > Data Companies
- > Network Operators

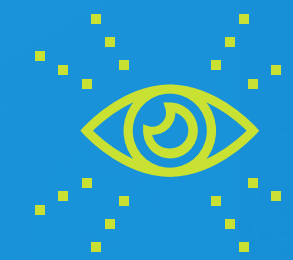
OUR VISION



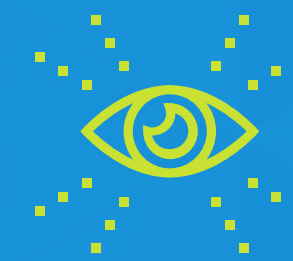
Accelerate IoT deployment and monetization for partners through simple, innovative, and user experience driven solutions.



Work with device manufacturers, service providers and retailers to deliver compelling user experiences based on Xped technologies.

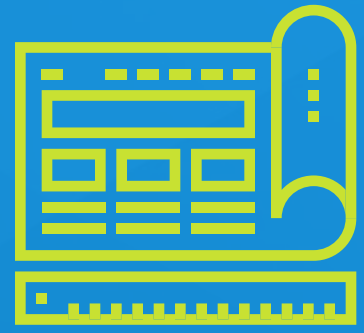


Monetize our technology via licensing, revenue share and API metering.



Seamlessly, safely and securely move data across our platform.

XPED OFFER SOLUTIONS FOR:



OEM's



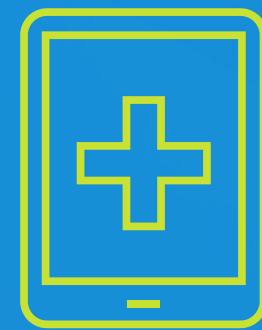
Retailers



Builders



Service
Providers

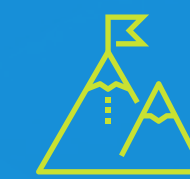


Healthcare
Providers

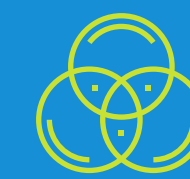


Property
Management

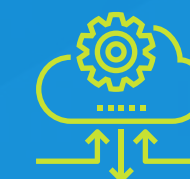
COMPETITIVE ADVANTAGE



IoT architecture: The highest level of interoperability



Unique UI/UX: Simple to learn and easy to use

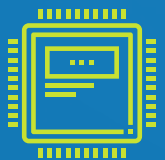


Cloud: Novel cloud / client architecture for data monetization

CHANNEL PARTNERS



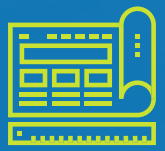
Channel Partners



SILICON VENDORS



ODM'S



OEM'S



TELCOS / MSOS



INSTALLER NETWORKS

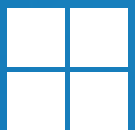


PROPERTY MANAGEMENT

Associated Partners



OPEN CONNECTIVITY
FOUNDATION™



Microsoft



Shenzhen Lenze Technology Co.,LTD
Complex Semiconductor (HK) Co.,LTD



General member of Intel®
Internet of Things Solutions Alliance

Target Partners



ESPRESSIF

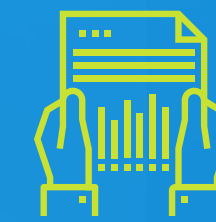


Disclaimer: Companies and logos above are target partners only
and are not necessarily indicative of any existing partnership.

ACCELERATED GROWTH STRATEGY



Accelerated growth to be achieved by joint venture partnerships and acquisitions of well established companies that will allow us to release our platform, and expand our brand and profile in the market place to provide an end to end solution for all smart devices.



Acquisition of companies that help us establish footholds in the IoT marketplace for multiple vertical segments. We will lead with Health (JCT Healthcare), Home and Building.



Partnering with industry leaders (Intel, Telink, Complex Semiconductor) to enhance their products and services with Xped's Infrastructure Platform (XIP).

EVALUATION CRITERIA



An acquisition or partner candidate must meet all three of the following criteria to be considered:



1 Channel

Access to a channel or establish a foothold in a new market segment.



2 Knowledge

Implement XIP into existing use cases; deep understanding of market segment use cases and business models.



3 Technology

Value-add technology to the Xped platform to create the best seamless user experience possible for the end customer or consumer.

WHY JCT ACQUISITION



Established in 2002, JCT Healthcare is the manufacturer of Assistive Technology and Nurse Call Systems to provide total control over the end to end solutions delivered.

JCT

Health IoT Market expected to reach \$163 Billion by 2020:

Target markets: Hospitals, Independent Living Facilities, Home Care, Aged Care

Existing technology: Nurse Call Solution, NuCAMS Messaging Software, API Integration

Channel access: Provides established foothold in Health for expansion of Xped's technologies

THE TELINK AGREEMENT



Telink is a cost-competitive fabless IC design house that develops highly integrated low power radio-frequency and mixed signal system chips for IoT applications.



Current technology: 2.4Ghz RF SoCs
- Bluetooth, Zigbee, Thread, 6LoWPAN, Homekit, Analog ICs - resistive/capacitive/electromagnetic touch control

Current partners: GE, Intel, Apple, Skyworth, MediaTek, Lenze

Agreement: Channel partner agreement for Xped Platform, Licensing of ADRC Proxy firmware for Bluetooth SoCs, Joint development of new SoCs

THE ARCADYAN MOU



Arcadyan provides solutions for Telecom operators, ISPs, retailers, consumer electronics companies and OEMs/ODMs. Through these channels, Arcadyan is one of the world's largest suppliers of Gateway devices.

MoU ADRC technology and Xped Infrastructure Platform

Xped to develop Apps for both Arcadyan and OEM\ODMs

Arcadyan sales exceeded \$1B AUD in 2016

One of the world's largest supplier of Gateway devices

THE LENZE AGREEMENT



Lenze sells under their own brands and also produce OEM products for worldwide distribution including The Walt Disney Company. Total Lenze sales exceeded 100 million devices in 2016.

License ADRC technology and Xped Infrastructure Platform

Xped to develop Apps for both Lenze and Lenze OEMs

Forecast 200 million device sales in 2017

Telink partner

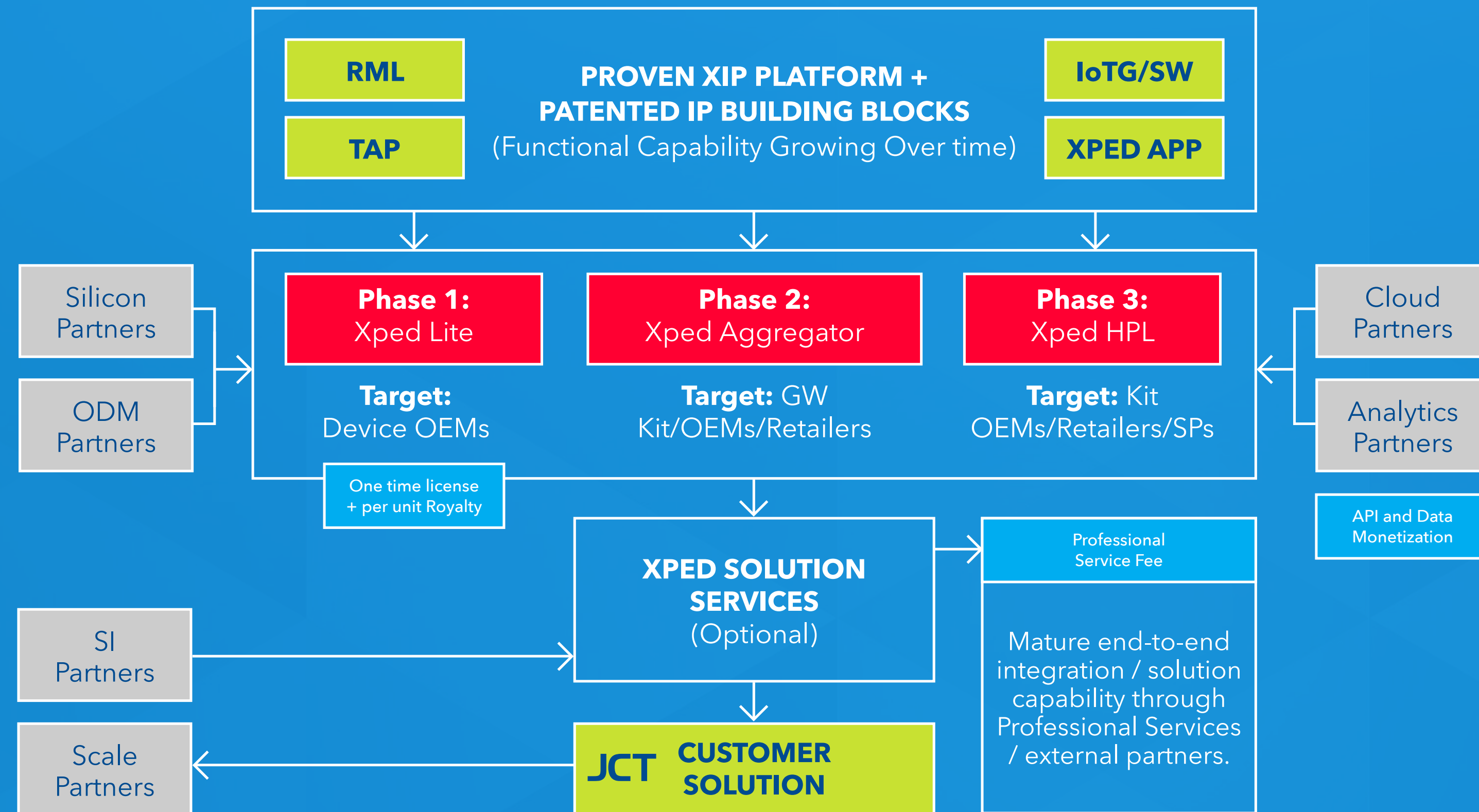
Lenze consumer devices include Smart Locks, Smart Lights, Bluetooth Car Audio and Fitness Equipment

VALUE PROPOSITION



REVENUE STREAM 1	SILICON VENDORS	ODMS	OEMS	SERVICE PROVIDERS	3RD PARTY SERVICES
<ul style="list-style-type: none">> Once time licensing> Per unit royalties> Maintenance Contracts					
REVENUE STREAM 2					
<ul style="list-style-type: none">> Professional Services> Monthly Contracts					
REVENUE STREAM 3					
<ul style="list-style-type: none">> API Management> API Metering					

PATH TO REVENUE



Start with what we have:

- > JCT Pipeline
- > Professional Services Pipeline
- > Si and ODM Partners

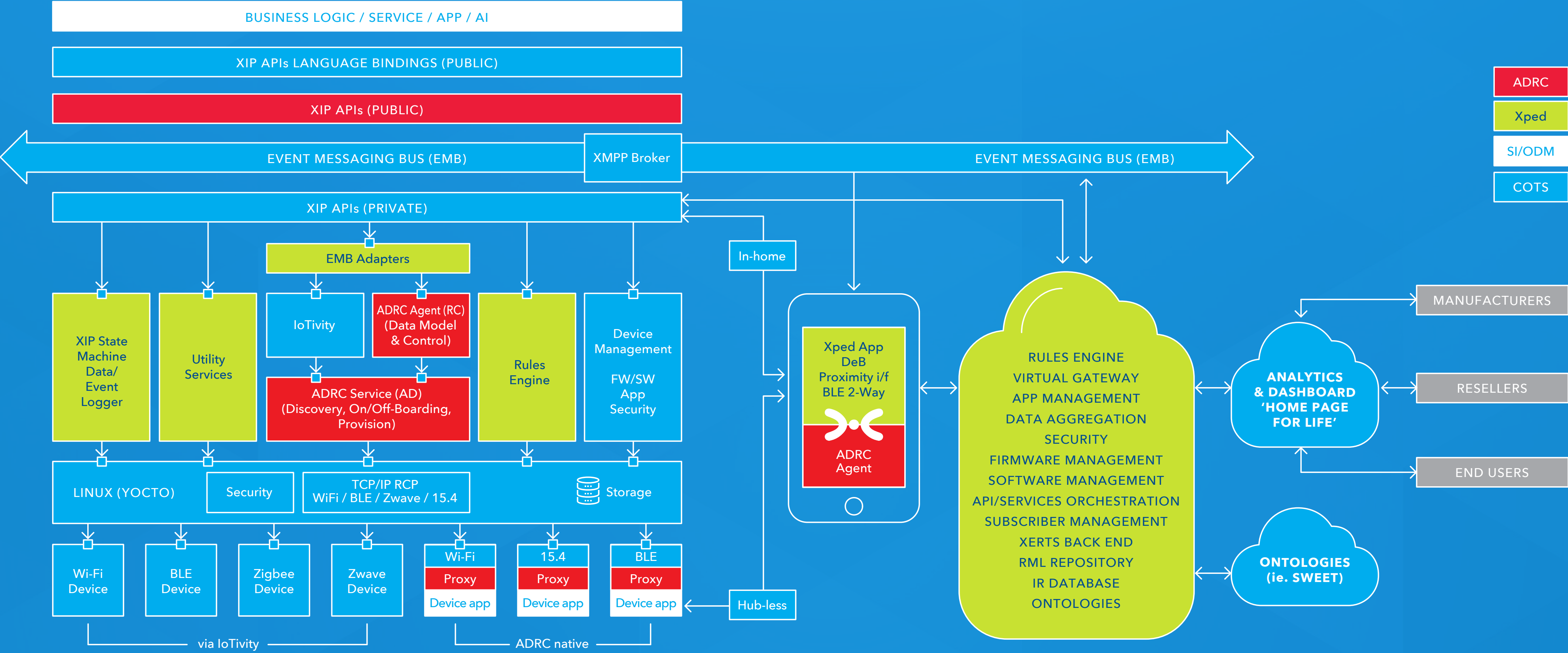
Expand the Value Prop:

- > Health / Building / Home
 - JCT: Lightsview, Vital Xense, Xped Aggregator

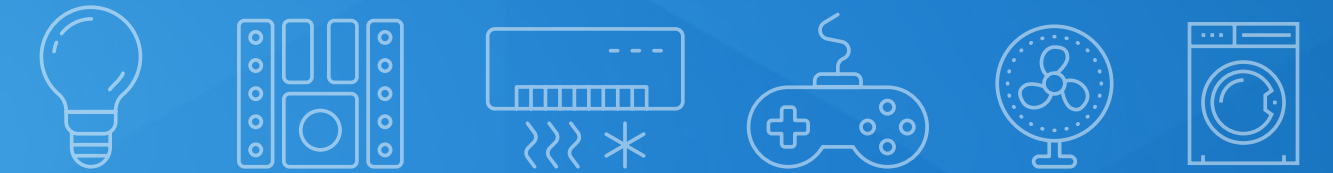
Scale and Monetize APIs:

- > Home Page for Life
 - Cloud Services, API Management

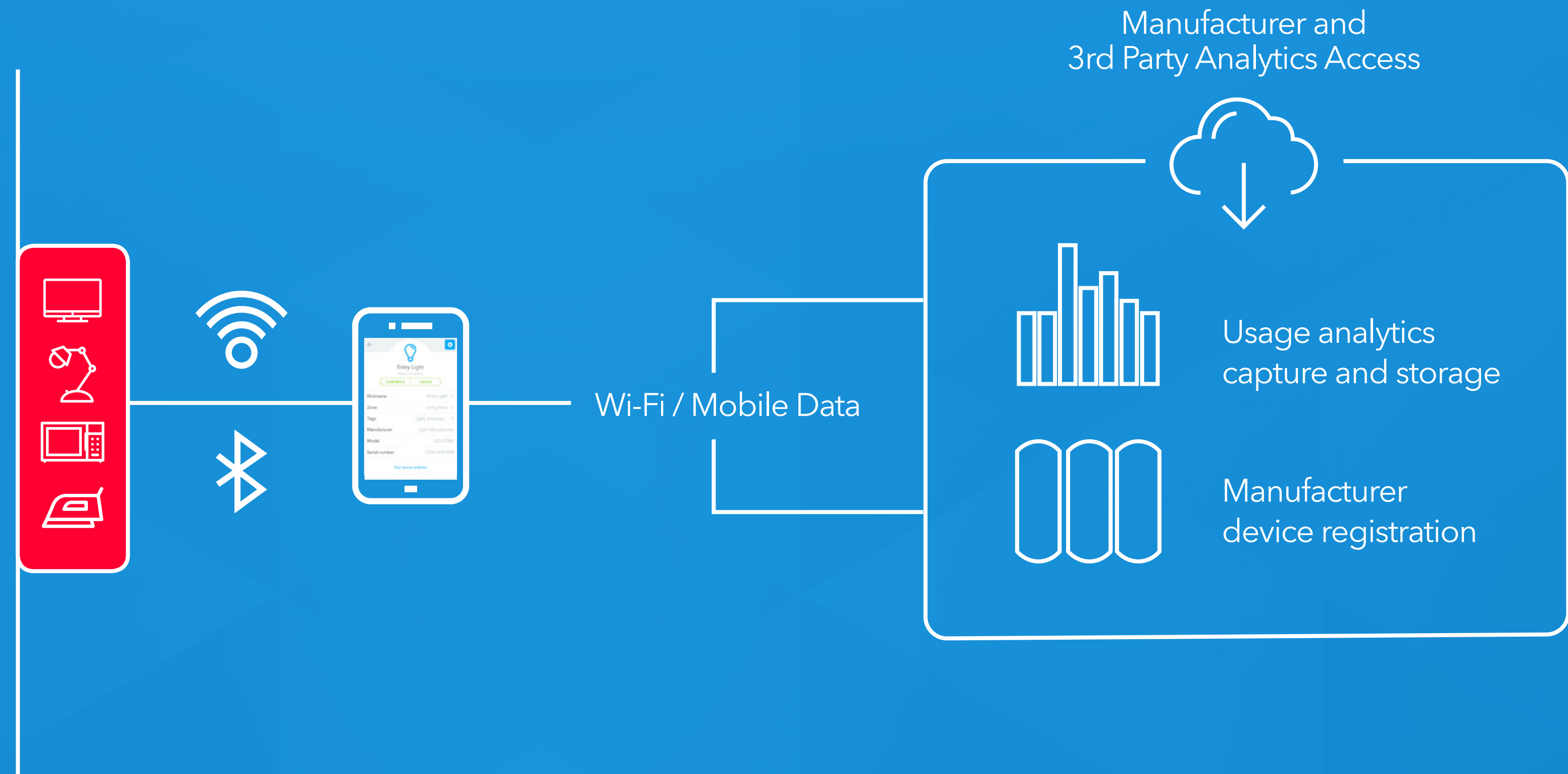
XPED INFRASTRUCTURE PLATFORM



XIP LITE: VIRTUAL GATEWAY



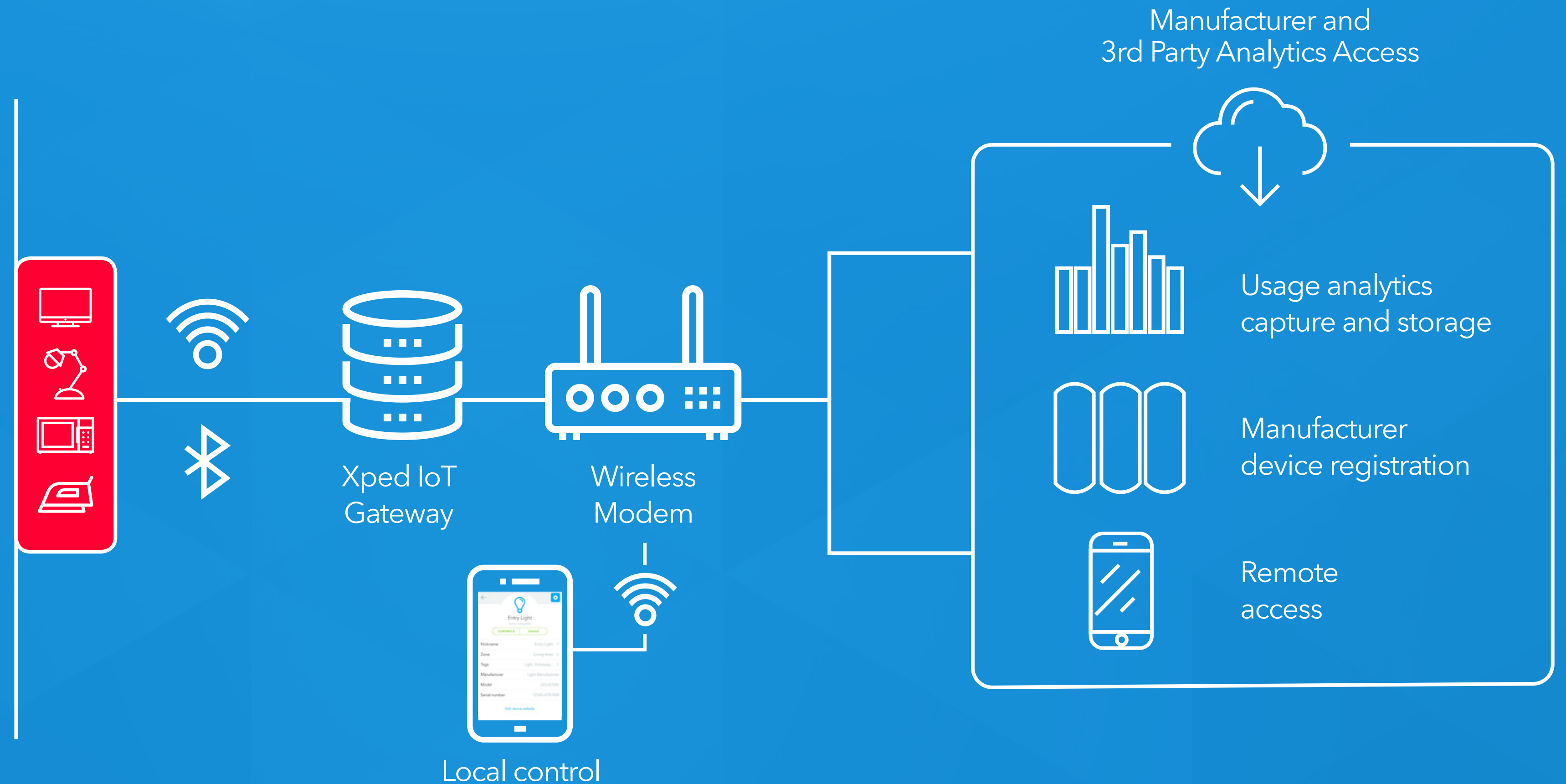
- > ADRC Compliant WiFi/BLE Devices
- > RML Translation WiFi/BLE Devices
- > Home Health and Smart Home IoT/Android Apps
- > Freemium Model



XIP: GATEWAY SOLUTIONS



- > Device support
 - 802.15.4/WiFi/BLE
 - ADRC Compliant
 - Iotivity Compliant
 - RML Translation
- > Use Cases
 - Home Health
 - Pro Health
 - Data Centers
 - Smart Home
- > License Fee with Maintenance



XIP: HOME PAGE FOR LIFE



XIP will aggregate all aspects of your home or business life:

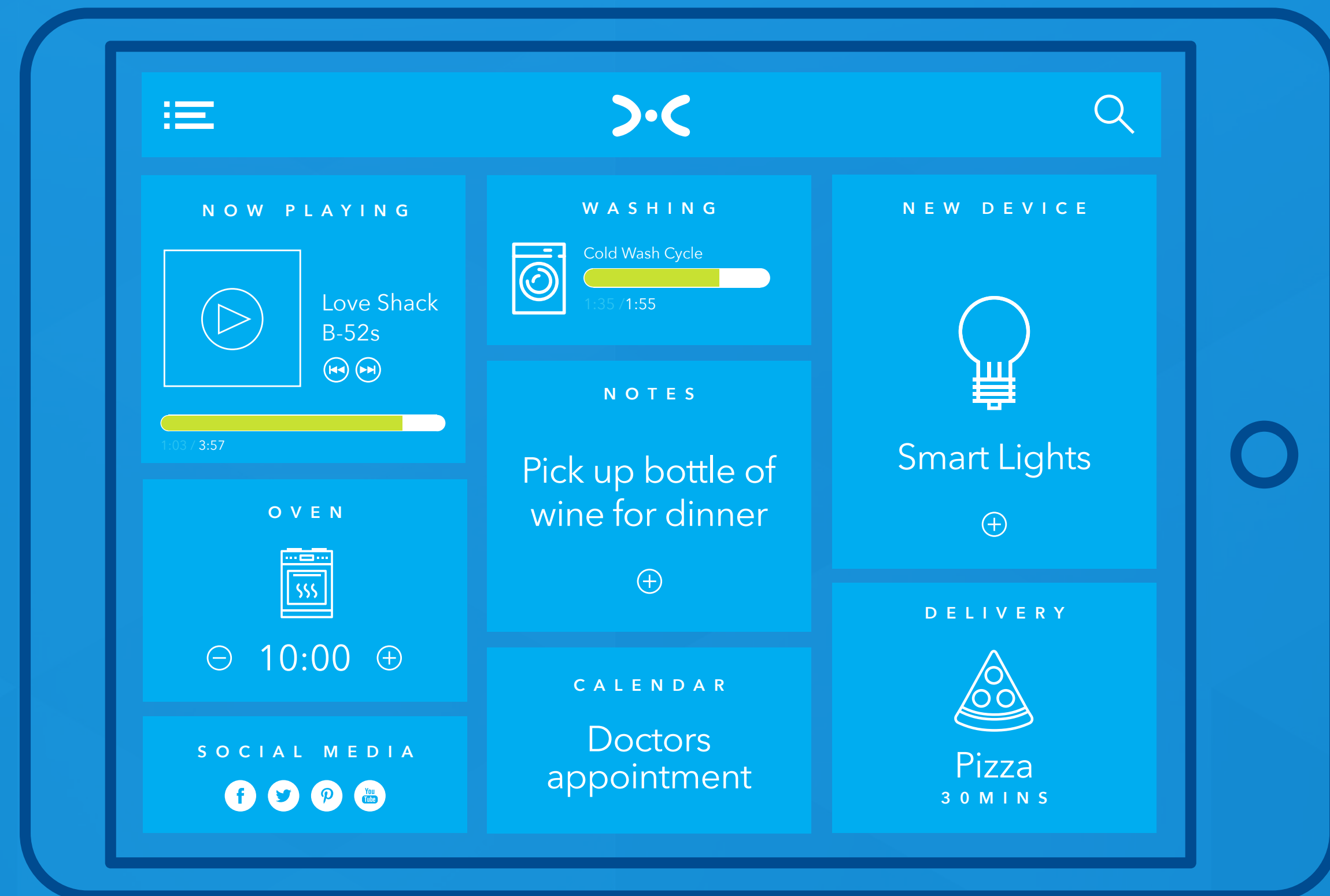
Automation

Security

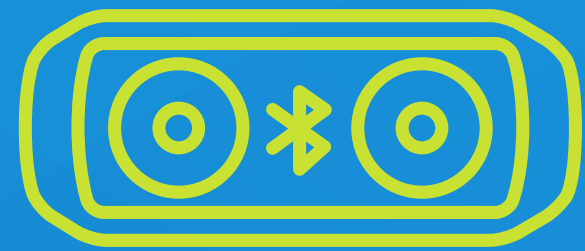
Communication

Schedule

Shopping



XIP GATEWAY PLATFORMS



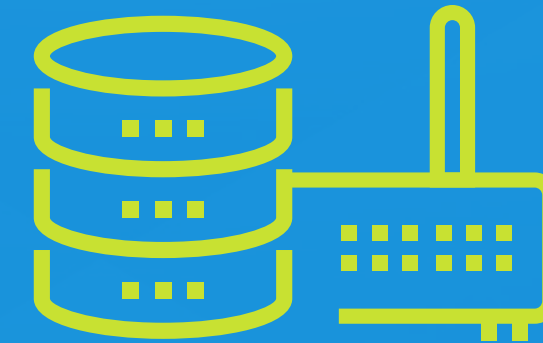
Smart Speaker

- > WiFi/BLE/15.4
- > Env. Sensors
- > Camera
- > Premium Speaker
- > 6+2 Mic Array



Consumer Gateway

- > WiFi/BLE/15.4
- > RJ45
- > USB 2.0
- > Cellular
- > Z-Wave Optional



Industrial Gateway

- > 1 x UART
- > 4 x GPIO
- > 1 x Mini PCIe
- > 2 x 10/100 Ethernet
- > Wall Mount / DIN rails

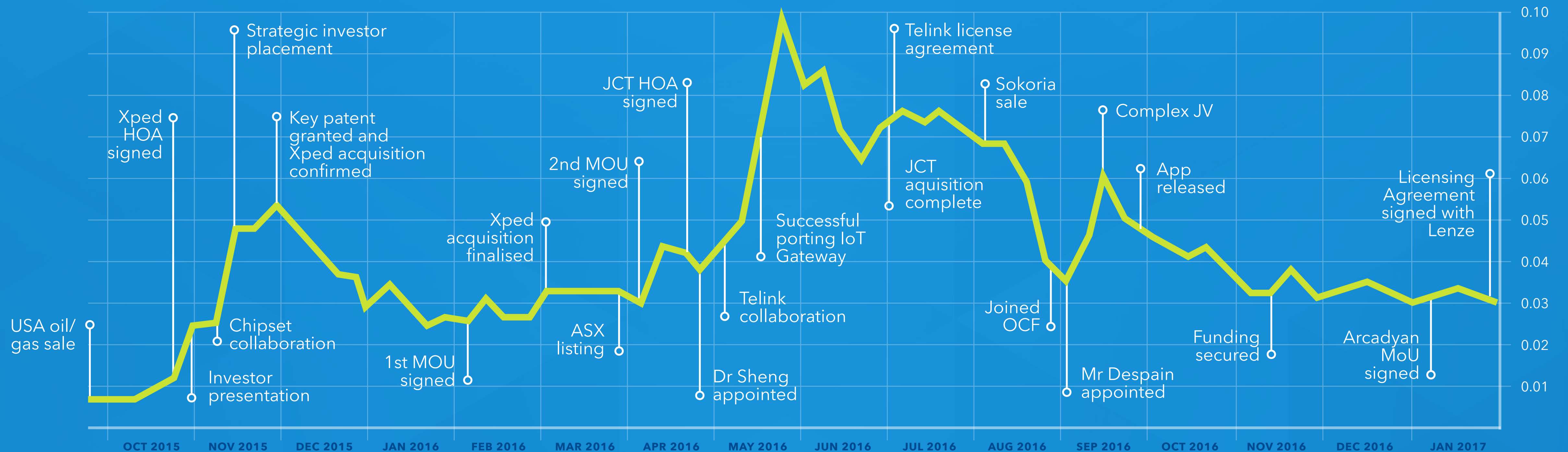
Targeted Use Cases:

- > Home Health
- > Pro Health
- > Data Centers
- > Smart Home
- > Smart Building

SHARE PRICE



Share Price Comparison 1 July 2015 - 27 January 2017



PROGRESS TO DATE



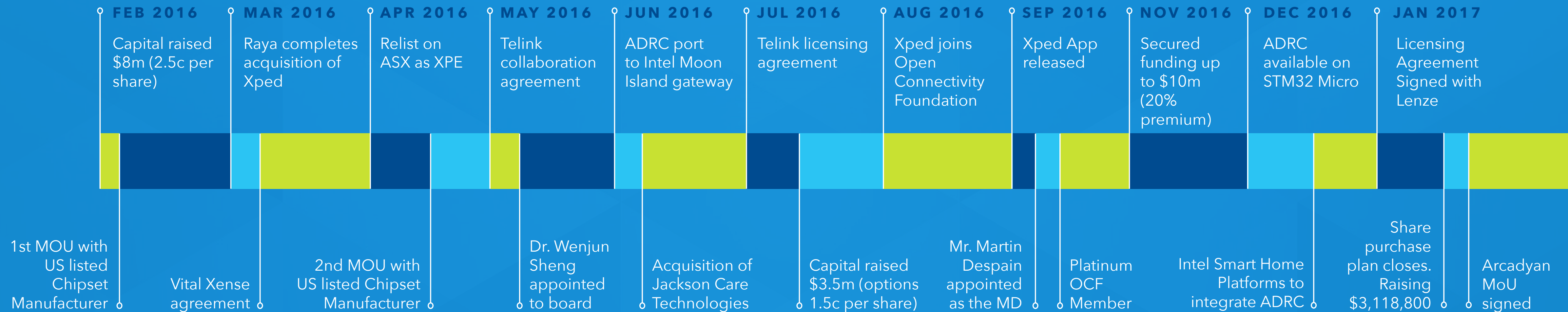
We've achieved many milestones over the last 12 months.



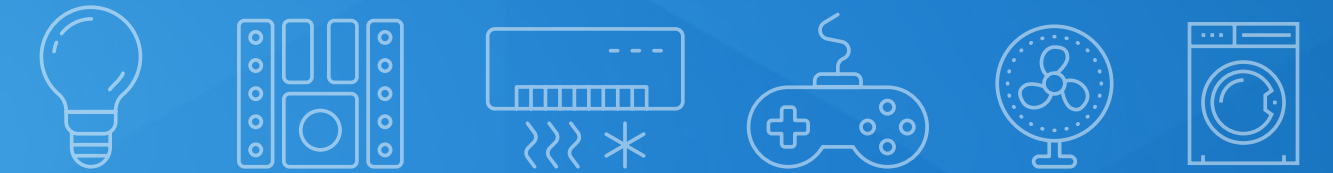
Establishment of the management team, structure and partnerships.



Establishment of strong financial foundations.



XPED CAPITAL STRUCTURE



CAPITAL STRUCTURE

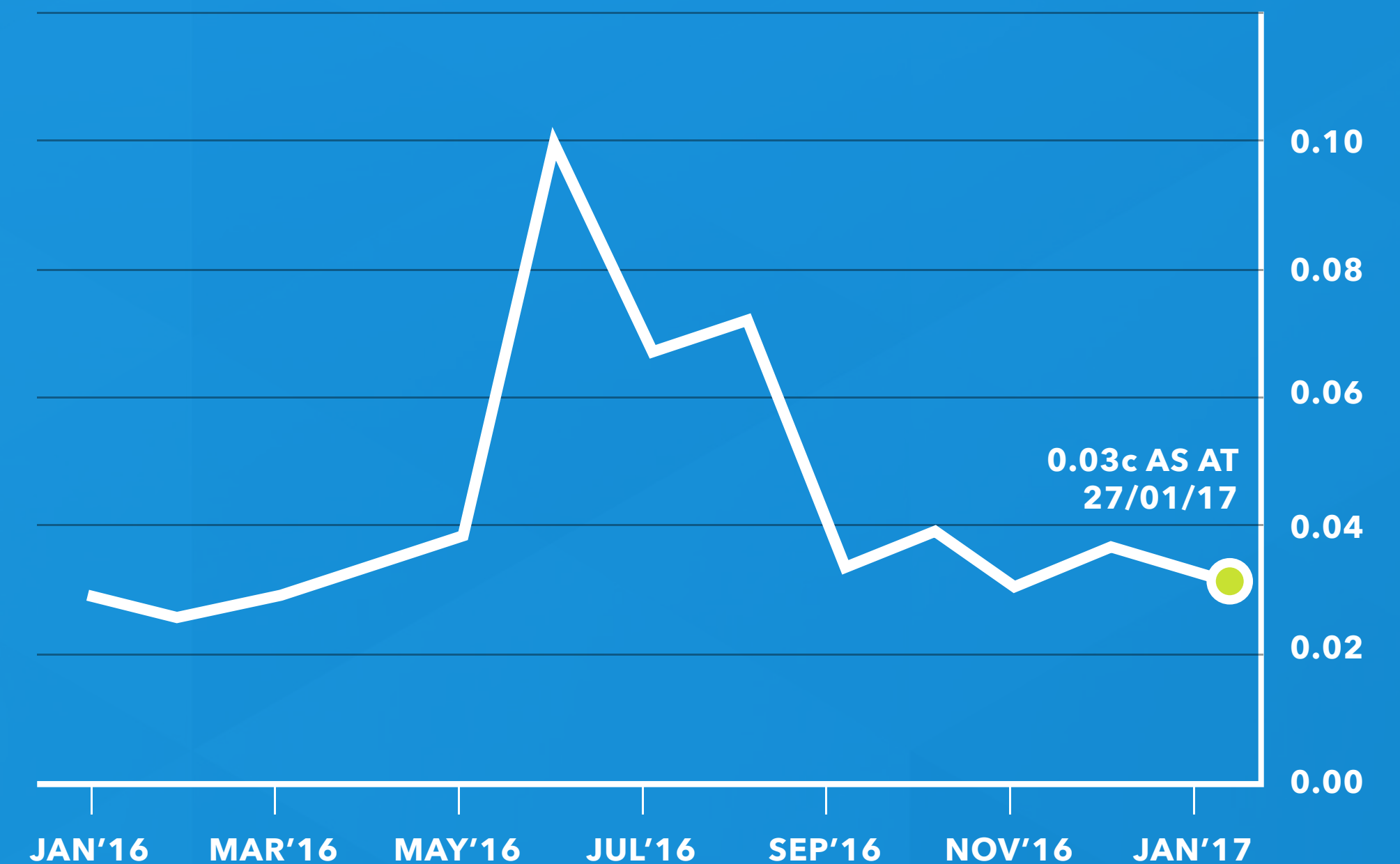
Ordinary fully paid shares	1,706,148,767
Vendor and advisor shares escrowed (Apr 18)	497,081,706
Advisor Shares Escrowed (Sep 17)	10,000,000
Total Shares on Issue	2,213,230,473

TOP 5 SHAREHOLDERS

JK Group Australia Pty Ltd	280,576,640
Atlanticx Technologies Pty Ltd	225,465,400
Dalex Pty Ltd	56,154,545
Mr Justin Laurence Barry	29,233,786
Sparke Enterprises Pty Ltd	26,575,000

Source: Automic Registry Services Top Holders Grouped Report as of 27 January 2017

12 MONTH SHARE PRICE GRAPH



ASX:XPE



XPED INVESTOR VALUE



Exploding
markets for
connected home
and IoT.

Platform
that enables
Internet of
Things (IoT).

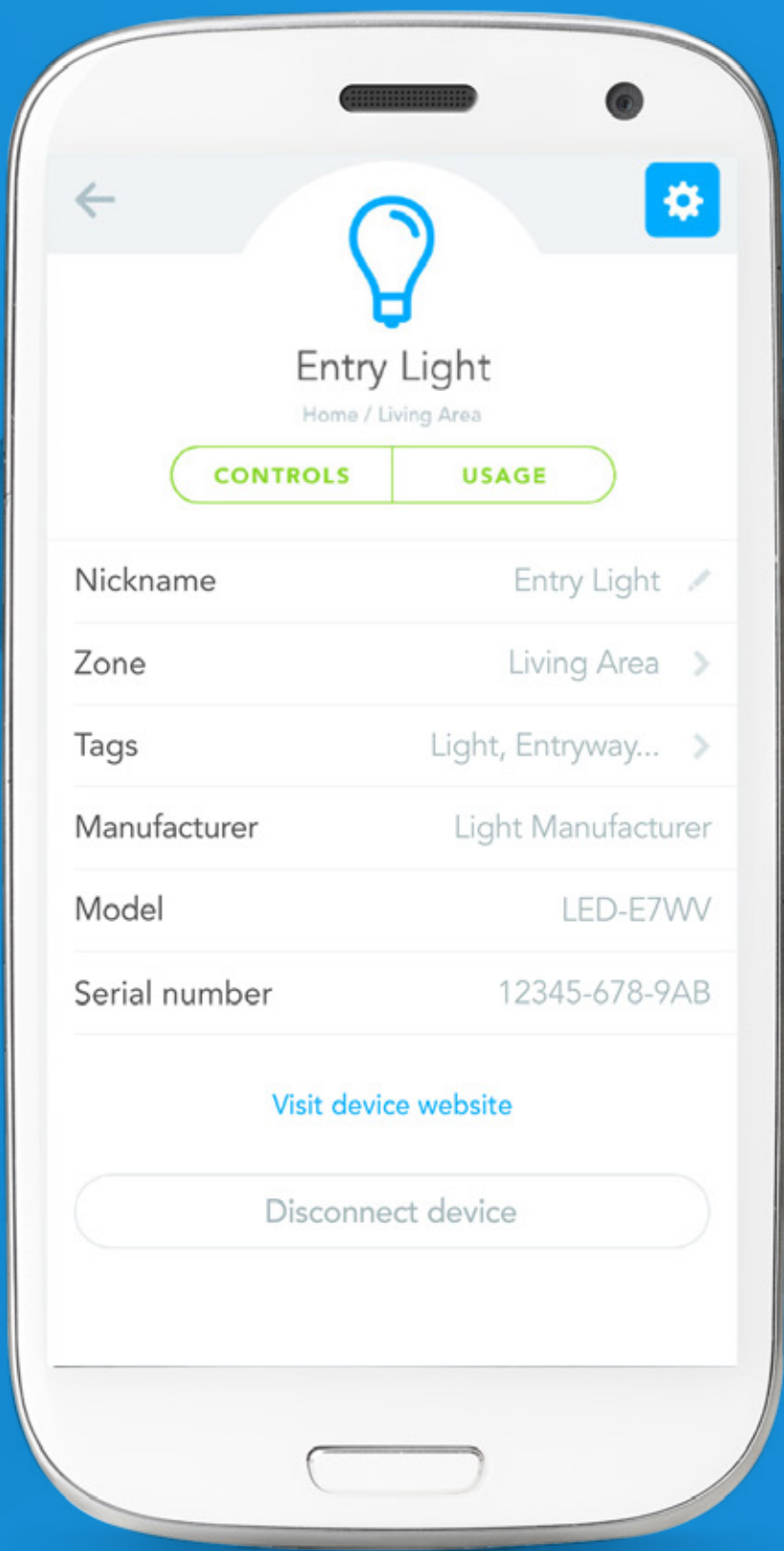
Revenue
model with
clear path to
profitability.

Market
and technology
leader.

Advanced
technology and
easy-to-use.

Novel vision
for user data
monetization.

CONSUMER GATEWAY



Home Health

Uses Cases:

- > Vitals Tracking
- > Activity Tracking
 - Movement
 - Diet
 - Medicine
- > Environment

Devices:

- > Blood Pressure
- > Blood Sugar
- > Scale
- > Pendant
- > Wrist band - Heart Rate / Activity
- > PIR Sensors
- > Contact Sensors
- > Env. Sensors - Temperature / Humidity / pm2.5
- > IP Camera

Smart Home

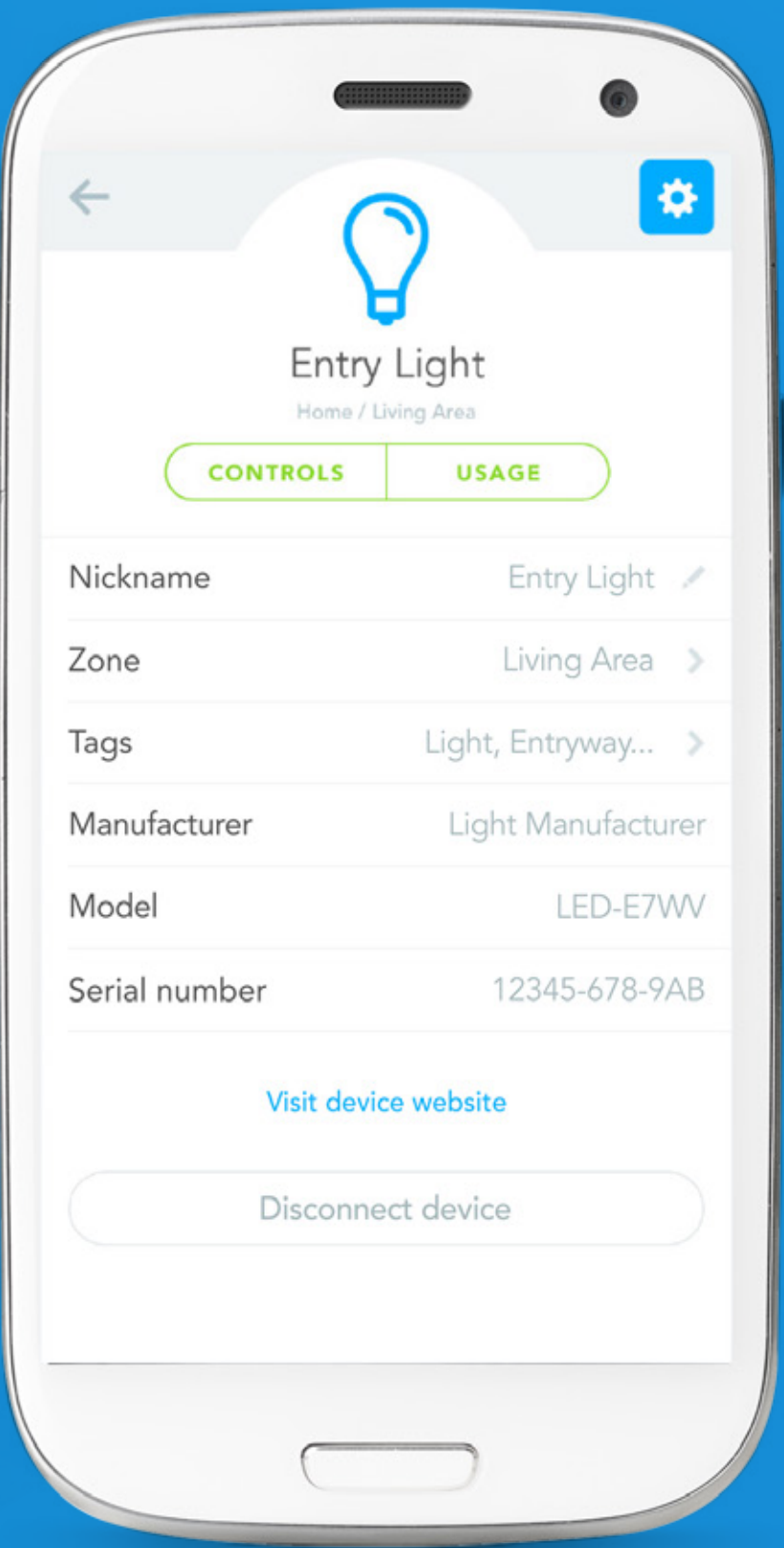
Uses Cases:

- > Automation
- > Energy Management
- > Security / Monitoring
- > Entertainment
- > Environment

Devices:

- > PIR Sensors
- > Contact Sensors
- > Lighting
- > Smart Plugs
- > Smart Switches
- > Circuit / Clamp
- > IP Camera
- > Door Intercom
- > Smoke / CO2
- > Smart Locks
- > IR Blaster

ENTERPRISE GATEWAY



Pro Health

Uses Cases:

- | | |
|-----------------------|---------------------|
| > Vitals Tracking | > Energy Management |
| > Activity Tracking | > Security |
| - Movement | > Monitoring |
| - Diet | > Entertainment |
| - Medicine | > Environments |
| > Care-giver Activity | |
| > Tracking | |
| - Location | |
| - Assignments | |
| > Automation | |

Devices:

- | | | |
|-------------------|-------------------------|--------------------|
| > Blood Pressure | > Environmental Sensors | > Door Intercom |
| > Blood Sugar | - Temperature | > Smoke / CO2 |
| > Scale | - Humidity | > Smart Locks |
| > Pendant | - pm2.5 | > IR Blaster |
| > Wrist band | > SIP Camera | > Thermostat |
| - Heart Rate | > Smart Latch | > Moisture Sensors |
| - Activity | > Lighting | > Appliances |
| > PIR Sensors | > Smart Plugs | |
| > Contact Sensors | > Smart Switch | |
| > Smart Pill Box | > Circuit / Clamp | |

DISCOVERY HUB



The Discover Bus™ system allows nodes to be connected to a hub over a daisy-chain wired CAN Bus transport layer. Nodes are added by simply plugging them into a hub or each other and immediately become available for control via the device browser app running on a smartphone or tablet.

HW Components:

- > Gateway
- > Discover Hub
- > Nodes
- > Sub-Nodes



THANK YOU

FOR MORE INFORMATION:

Xped Limited

ABN 89 122 203 196
Level 6, 412 Collins Street
Melbourne VIC 3000

T +61 3 9642 0655
F +61 3 9642 5177
E info@xped.com
www.xped.com

CORPORATE ENQUIRIES:

Cadmon Advisory

Cameron Low
T +61 3 9225 5389
E IR@xped.com

