



## SOVEREIGN GOLD COMPANY LIMITED

**Sovereign Gold Company Limited**  
ACN 145 184 667

Level 2, 131 Macquarie Street  
Sydney NSW 2000  
Tel: +61 2 9251 7177  
Fax: +61 2 9251 7500

**Contact**  
Michael Leu CEO

email: [mleu@sovereigngold.com.au](mailto:mleu@sovereigngold.com.au)

**Latest News**  
[www.sovereigngold.com.au](http://www.sovereigngold.com.au)

**Directors / Officers**  
John Dawkins AO  
Michael Leu  
Peter Meers  
Jacob Rebek

**ASX Symbol: SOC**

### Qualifying Statements

The information in this Report that relates to Exploration Information is based on information compiled by Michael Leu who is a member of The Australasian Institute of Mining and Metallurgy and the Australian Institute of Geoscientists.

Mr Leu is a qualified geologist and is a director of Sovereign Gold Company Limited.

Mr Leu has sufficient experience, which is relevant to the style of mineralisation and type of deposit under consideration and to the activity, which he is undertaking to qualify as a Competent Person as defined in the 2004 Edition of the Australasian Code for Reporting of Exploration Results, Mineral Resources and Ore Resources. Mr Leu consents to the inclusion in this announcement of the Exploration Information in the form and context in which it appears.

**ASX Release**  
15<sup>th</sup> July 2013

## Fully funded 2,500m drilling campaign at Uralla continues

- **2,500m diamond drilling campaign at Uralla is underway**
- **Fully funded by Joint venture partner, SUGEC, funding \$2m exploration program on EL 7491 to March 2014**
- **Testing large scale Intrusion-Related Gold Systems (IRGS)**
- **Deep drilling to assess full potential of 1.55km identified gold-bearing structure**
- **The campaign is expected to be completed in the September quarter– regular updates will be provided to the market**

A 2,500m multiple hole diamond drilling program is underway on the 1.55km long gold-bearing structure, discovered with Sovereign Gold's co-operation partner SUGEC, in EL 7491 (ASX: 29 April 2013).

This newly discovered mineralisation is part of the large Rocky River-Uralla Intrusion-Related Gold System and has confirmed the repetition of Martins Shaft style mineralisation. Geochemical sampling (soil and rock chips) and mapping programs have now located additional parallel mineralised structures several hundred metres long.

The discovery is in EL 7491 currently under joint venture with SUGEC who are spending \$2 million on EL 7491 to March 2014 (earning 30%), as part of a total exploration funding commitment of \$21 million on 10 tenements where Sovereign Gold has a majority interest.

SUGEC'S large tracked diamond rig is capable of drilling to depths of 800 metres.

Sovereign Gold and SUGEC are undertaking the deep drilling program to test the gold grades laterally and vertically along the 1.55km long gold-bearing structure to establish a JORC compliant resource through 2013.

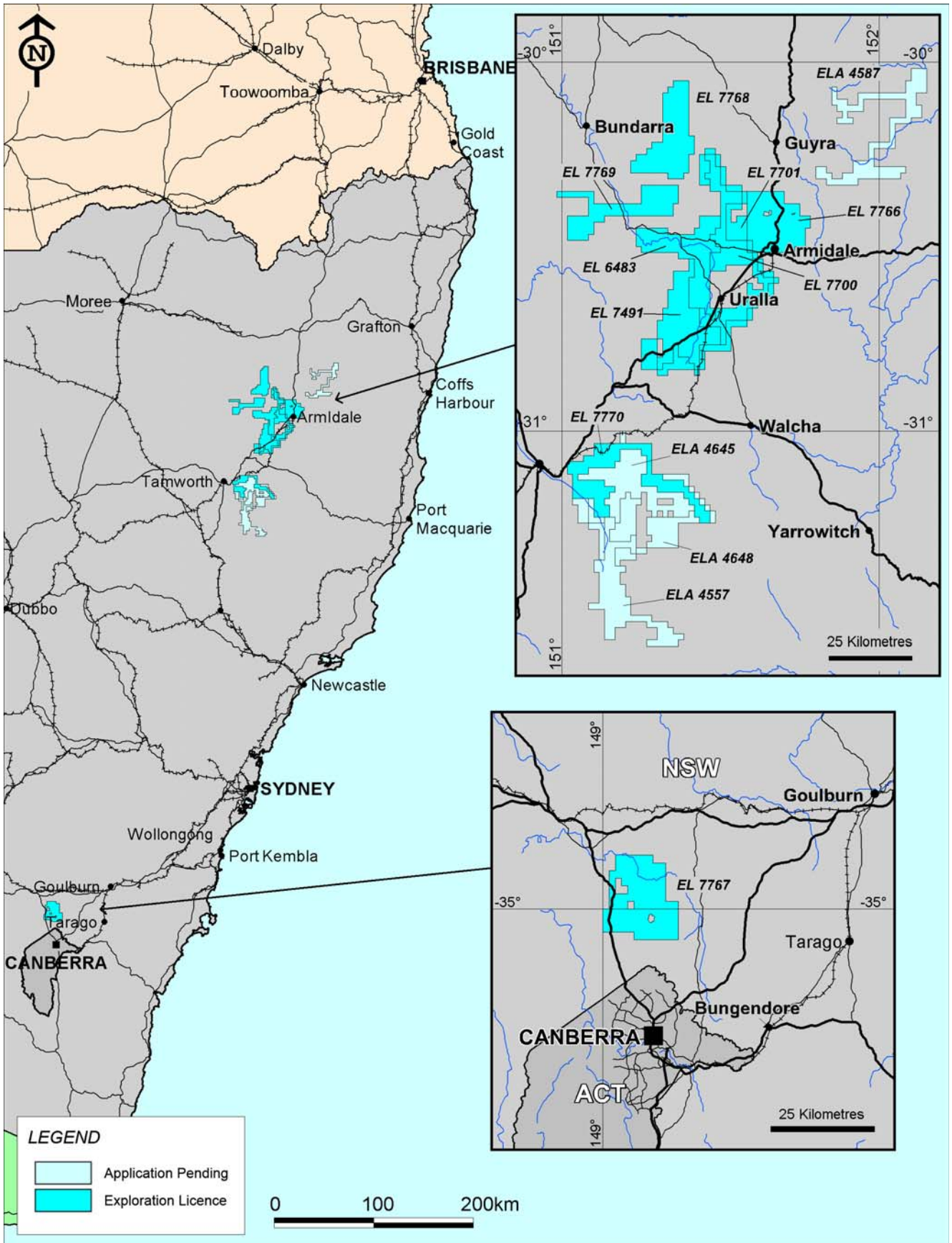
### For further information please contact:

Michael Leu, CEO  
Telephone: +61 2 9251 7177

### Media enquiries:

Rebecca Lawson, Mercury Consulting  
Mobile: +61 432 398 122  
[Rebecca.lawson@mercuryconsulting.com.au](mailto:Rebecca.lawson@mercuryconsulting.com.au)

This Announcement should be read together with previous releases by Sovereign Gold regarding the development of the 1.55km gold-bearing structure identified on EL 7491, specifically the announcements of 10<sup>th</sup> October, 2<sup>nd</sup> November, 6 December 2012, 21<sup>st</sup> January, 29<sup>th</sup> January, 7<sup>th</sup> March, 4<sup>th</sup> April, 22<sup>nd</sup> April and 5 June 2013.



Sovereign Gold Tenement Portfolio