



21 May 2013



Re: Presentation at Australia China Minerals Investment Summit, Darwin 21 -23 May 2013

Attached is the presentation to be given to the Australia China Minerals Investment Summit, in Darwin by Managing Director, Mr John Anderson.

For further information contact:

Mr John Anderson
Managing Director
Investigator Resources Limited
Phone: 07 3870 0357



Investigator Resources Limited

ASX Code: **IVR**

Abundant new silver & copper
opportunities in South Australia

Conference Presentation:

John Anderson – Managing Director

AUSTRALIA CHINA
Minerals Investment Summit

Darwin 21-23 May 2013

INVESTIGATOR RESOURCES IS AN EXPLORATION COMPANY THAT IS FOCUSING ON MAKING GREENFIELDS SILVER AND COPPER DISCOVERIES IN SOUTH AUSTRALIA WITH THE OBJECTIVE OF BECOMING A PRODUCER IN A FEW YEARS.

FOR THE PAST YEAR WE HAVE BEEN DRILLING THE PARIS SILVER PROSPECT, DISCOVERED IN LATE 2011, WITH THE AIM OF ANNOUNCING A MAIDEN RESOURCE ESTIMATE IN THE SEPTEMBER QUARTER OF 2013.

WE ARE UNDERTAKING AN AGGRESSIVE AND ON-GOING EXPLORATION PROGRAM CAPITALISING ON OUR NEW OPPORTUNITIES AND GOOD FUNDING POSITION.

OUR DRILLING PROGRAMS IN THE SEPTEMBER QUARTER HAVE A HIGH POTENTIAL TO MAKE MORE SILVER DISCOVERIES AND SHOW NEW COPPER POTENTIAL IN OUR TENEMENTS.



Disclaimer

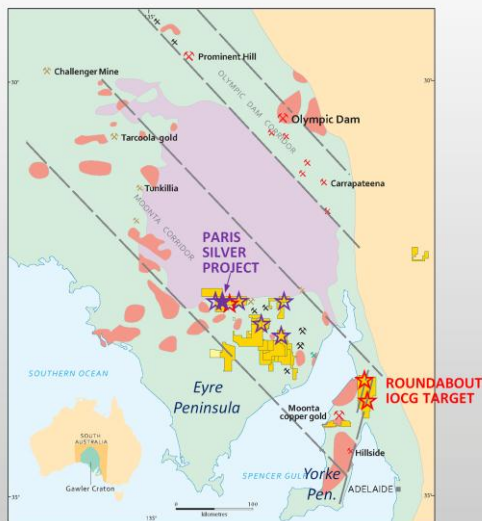
The information in this presentation is published to inform you about Investigator Resources Limited and its activities. Some statements in this presentation regarding estimates or future events are forward looking statements. They involve risk and uncertainties that could cause actual results to differ from estimated results. All reasonable effort has been made to provide accurate information, but we do not warrant or represent its accuracy and we reserve the right to make changes to it at any time without notice.

To the extent permitted by law, Investigator Resources Limited accepts no responsibility or liability for any losses or damages of any kind arising out of the use of any information contained in this presentation. Recipients should make their own enquiries in relation to any investment decisions.

2

MINERAL EXPLORATION IS HIGHLY SPECULATIVE SO YOU ARE ADVISED TO SEEK INDEPENDENT ADVICE ABOUT INVESTIGATOR RESOURCES' PROSPECTS.

A LEADER IN SILVER & COPPER EXPLORATION OF THE REVITALISED SOUTHERN GAWLER CRATON



One innovative concept:

The Moonta Corridor

has resulted in IVR's outstanding portfolio of exploration projects

Eyre Peninsula

PARIS silver project

Four potential new silver fields

Large new "Paris-Plus" silver targets

(Alexander, Hector, Wartaka South, Morgans South)

Porphyry copper potential

Northern Yorke Peninsula

Roundabout IOCG copper gold target

ALL OUR EXPLORATION TENEMENTS, SHOWN IN YELLOW, ARE IN THE GAWLER CRATON. THIS GEOLOGICAL PROVINCE CONTAINS THE GIANT OLYMPIC DAM COPPER GOLD URANIUM MINE. SINCE 2001 THERE HAS BEEN A STEADY STREAM OF NEW DISCOVERIES OF OTHER IRON OXIDE COPPER GOLD (OR "IOCG") DEPOSITS SUCH AS PROMINENT HILL, CARRAPATEENA AND HILLSIDE.

THE EXTENT OF THE GAWLER CRATON IS SHOWN ON THE MAP IN GREEN WITH OTHER IMPORTANT GEOLOGY FOR FORMING IOCG DEPOSITS BEING THE HILTABA GRANITES COLOURED IN RED AND THE GAWLER RANGE VOLCANICS COLOURED IN MAUVE.

INVESTIGATOR RESOURCES HAS A DOMINANT TENEMENT GROUND POSITION IN THE SOUTHERN GAWLER CRATON WHERE WE HAVE DISCOVERED THE PARIS SILVER DEPOSIT ABOUT 350KM NORTH OF THE CAPITAL CITY OF ADELAIDE AND 250KM SOUTH OF OLYMPIC DAM MINE. THE LOCATION IS FAVOURABLE FOR POSSIBLE MINE DEVELOPMENT.

THE PARIS DISCOVERY PROVES THE SUCCESS OF OUR :-

- EXPLORATION MODEL OF THE MOONTA CORRIDOR AS AN ALTERNATIVE TO EARLIER EXPLORATION MODELS.

THE PARIS DISCOVERY ALSO CONFIRMS INVESTIGATOR'S:-

- INNOVATIVE APPROACH OF USING REGIONAL MODERN GEOCHEMISTRY TO PROVIDE A NEW MAP OF MINERAL CORRIDORS AND FIELDS AND HIGH-POTENTIAL SILVER AND COPPER TARGETS WITHIN OUR TENEMENTS.

CORPORATE DETAILS

ASX-listed (IVR) in April 2007

Capital Structure at 10th May 2013:

Total shares on issue	335,656,687
• CITIC Australia Pty Ltd	67,097,772 (19.99%)
• Acorn Capital	16,893,865 (5.03%)
Top 20 shareholders	43.17%
Total shareholders	3,813

Capitalised c. \$37m @ 11.0c per share (at 10th May 2013)

Cash at bank - \$12.5m (at 31st March 2013)



INVESTIGATOR RESOURCES WAS LISTED ON THE AUSTRALIAN STOCK EXCHANGE 6 YEARS AGO. OUR ASX CODE IS “IVR”.

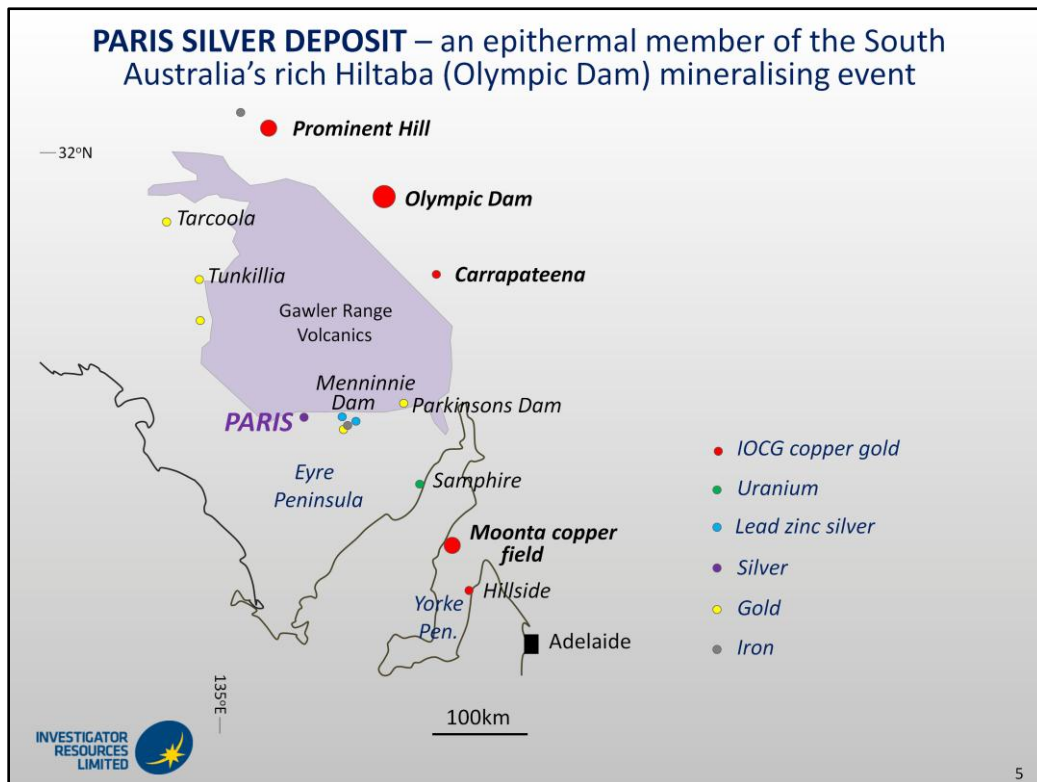
SINCE LISTING, WE HAVE HAD THE SAME STABLE AND EMINENT BOARD COMPRISING A MINING ENGINEER, BANKER AND GEOLOGISTS.

OUR CORNERSTONE INVESTOR, CITIC AUSTRALIA, HAS BEEN ALSO BEEN WITH US SINCE THE COMPANY’S INCEPTION.

INVESTIGATOR IS CAPITALISED AT ABOUT A\$35 MILLION AND HAS ABOUT \$12 MILLION IN CASH.

WE HAVE 12 STAFF INCLUDING 6 GEOLOGISTS SUPPLEMENTED BY CONSULTANTS AND CONTRACTORS.

MOST OF OUR STAFF ARE BASED IN OUR OPERATIONAL OFFICE IN ADELAIDE CLOSE TO THE PROJECTS. OUR SMALL HEAD OFFICE IS IN BRISBANE QUEENSLAND.



THE PARIS SILVER DEPOSIT IS SITUATED AMONGST OTHER DEPOSITS THAT FORMED DURING THE MAJOR “HILTABA” MINERALISING EVENT. THIS EVENT FORMED A RICH DIVERSITY OF METAL DEPOSITS INCLUDING MAJOR IOCG DEPOSITS, URANIUM DEPOSITS AND GOLD DEPOSITS.

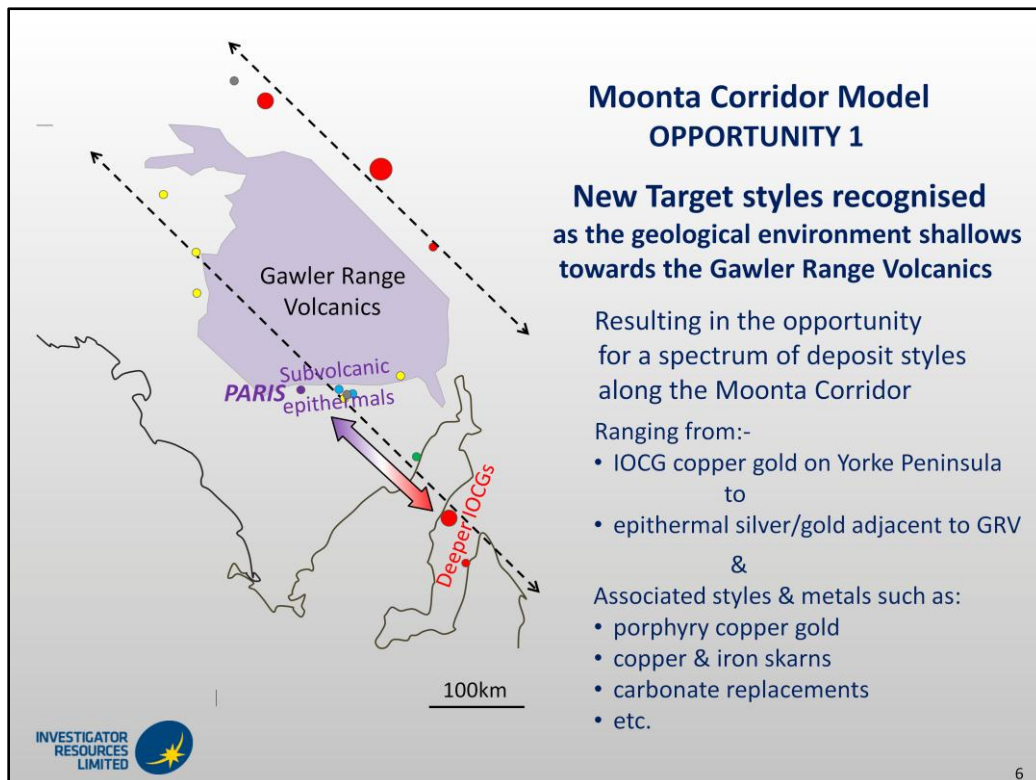
IN 1980, ONLY OLYMPIC DAM AND THE HISTORIC MOONTA AND TARCOOLA FIELDS WERE KNOWN. SINCE THEN, THE GAWLER CRATON HAS PRODUCED A STEADY STREAM OF COPPER AND GOLD DISCOVERIES OVER A WIDE REGION.

THERE IS SIGNIFICANT POTENTIAL FOR ADDITIONAL AND MORE FREQUENT DISCOVERIES.

INVESTIGATOR HAS POSITIONED ITSELF TO MAKE SUCH SILVER AND COPPER DISCOVERIES BASED ON ITS INNOVATIVE MOONTA CORRIDOR MODEL NOW GAINING ACCEPTANCE BY THE WIDER INDUSTRY.

THE DISTRIBUTION OF HILTABA DEPOSITS SHOWS TWO NORTHWEST CORRIDORS OF MINERALISATION:-

- A NORTHERN CORRIDOR THROUGH CARRAPATEENA, OLYMPIC DAM AND PROMINENT HILL IOCG DEPOSITS; AND
- A SOUTHERN CORRIDOR FROM THE MOONTA AND HILLSIDE COPPER GOLD DEPOSITS THROUGH THE PARIS SILVER PROSPECT AND ONTO THE TARCOOLA GOLD DEPOSITS.

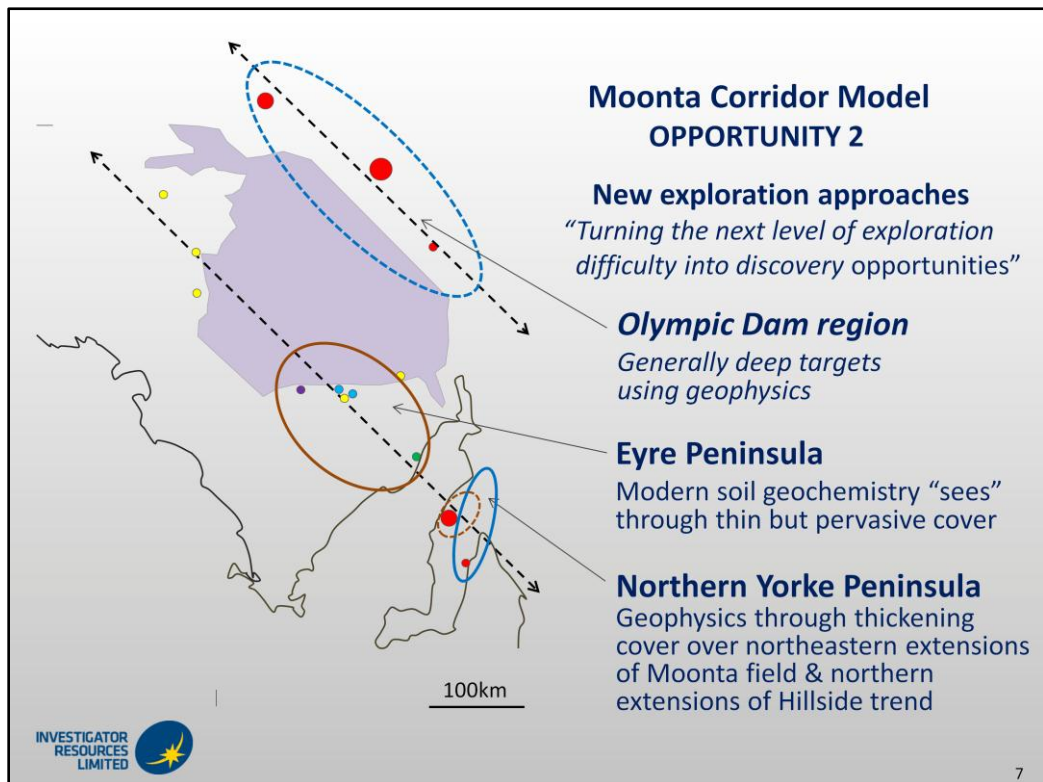


THE MOONTA CORRIDOR MODEL PROVIDES THE OPPORTUNITY TO EXPLORE THE PROSPECTIVE GEOLOGY THAT WAS ERODED OFF THE TOP OF OLYMPIC DAM, BUT STILL PRESERVED ON EYRE PENINSULA.

AS SUCH THE SOUTHERN GAWLER CRATON HAS POTENTIAL FOR A SPECTRUM OF UNDISCOVERED DEPOSIT STYLES RANGING FROM IOCG COPPER GOLD DEPOSITS ON YORKE PENINSULA TO SUBVOLCANIC EPITHERMAL SILVER AND GOLD DEPOSITS AND PORPHYRY COPPER DEPOSITS ON THE SOUTHERN MARGIN OF THE GAWLER RANGE VOLCANICS.

SO THE MOONTA CORRIDOR MODEL TELLS US **WHERE** TO FOCUS OUR EXPLORATION EFFORTS TO MAKE THE NEW DISCOVERIES.

HOWEVER MUCH OF THE PROSPECTIVE REGION IS COVERED BY YOUNGER GEOLOGY COVER AND THIS HAS LARGELY FOILED PAST EXPLORERS.



THEREFORE THE CHALLENGE IS **HOW** TO LOOK THROUGH THE COVER?

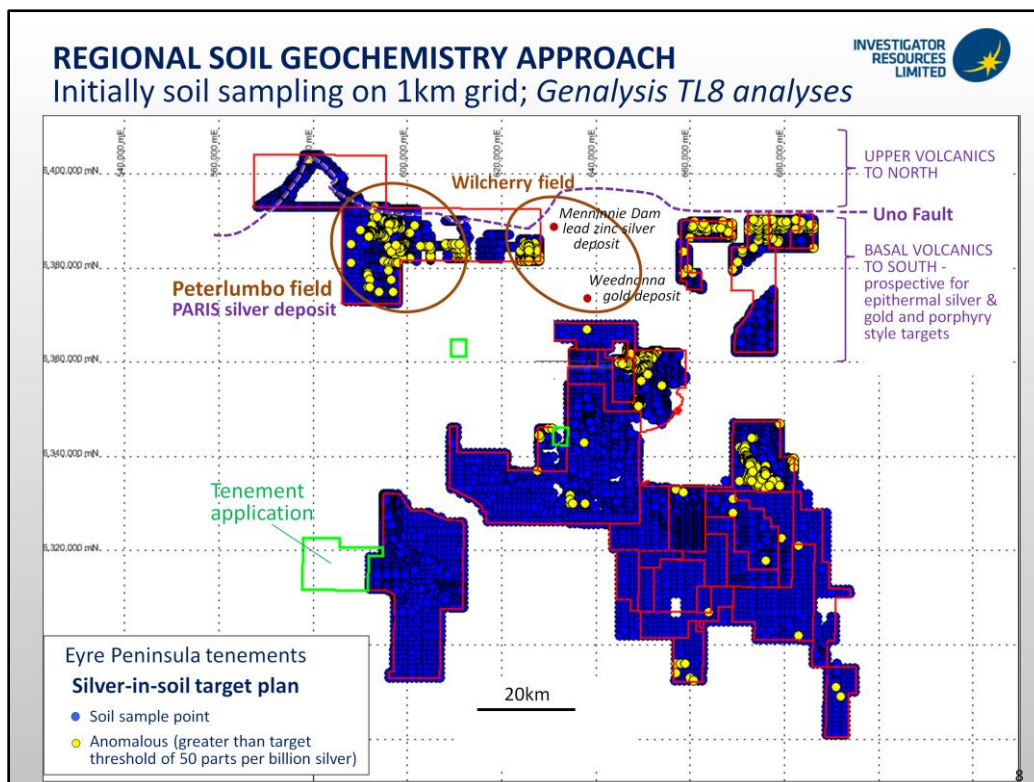
OTHER EXPLORERS HAVE FOCUSED ON USING MAGNETICS AND GRAVITY GEOPHYSICS TO REMOTELY SENSE IOCG TARGETS THROUGH DEEP COVER IN THE OLYMPIC DAM REGION.

INVESTIGATOR REALISED THERE WAS A BETTER OPPORTUNITY TO USE MODERN GEOCHEMISTRY THAT CAN NOW "SEE" THROUGH THE THINNER COVER ON THE EYRE PENINSULA PORTION OF THE MOONTA CORRIDOR.

THIS EMPIRICAL APPROACH HAS THE THREE ADVANTAGES OF:

- DIRECTLY MAPPING THE METALS WE ARE LOOKING FOR;
- BEING INDEPENDENT OF POSSIBLY INCORRECT ASSUMPTIONS ABOUT LOCAL TARGET STYLES;
- THE POTENTIAL FOR DISCOVERING SHALLOW METAL DEPOSITS UNDER ONLY A FEW TENS OF METRES OF COVER.

THIS FIRST PASS SEARCH IN THE SOUTHERN GAWLER CRATON HAS INCREASED OUR CHANCES OF DISCOVERING OPEN-PITABLE DEPOSITS WITH ECONOMIC ADVANTAGES OVER DEEPER DEPOSITS.



INVESTIGATOR THEREFORE MADE THE BOLD MOVE OF SAMPLING THE COMPANY'S ENTIRE TENEMENT AREA WITH REGIONAL SOIL GEOCHEMISTRY. THIS TOOK 2 YEARS AND CONSIDERABLE COST TO COLLECT THE DATASET. SURVEYING SUCH A LARGE AREA IS NORMALLY DONE BY GOVERNMENT RESEARCH ORGANISATIONS OR VERY LARGE COMPANIES.

THIS MAP SHOWS ALL THE SOIL SAMPLE POINTS IN BLUE WITH THOSE ANOMALOUS IN SILVER COLOURED YELLOW.

THIS PROPRIETARY DATASET IS A GREAT ADVANTAGE FOR INVESTIGATOR AS IT MAPS POTENTIAL NEW METAL FIELDS PREVIOUSLY NOT RECOGNISED.

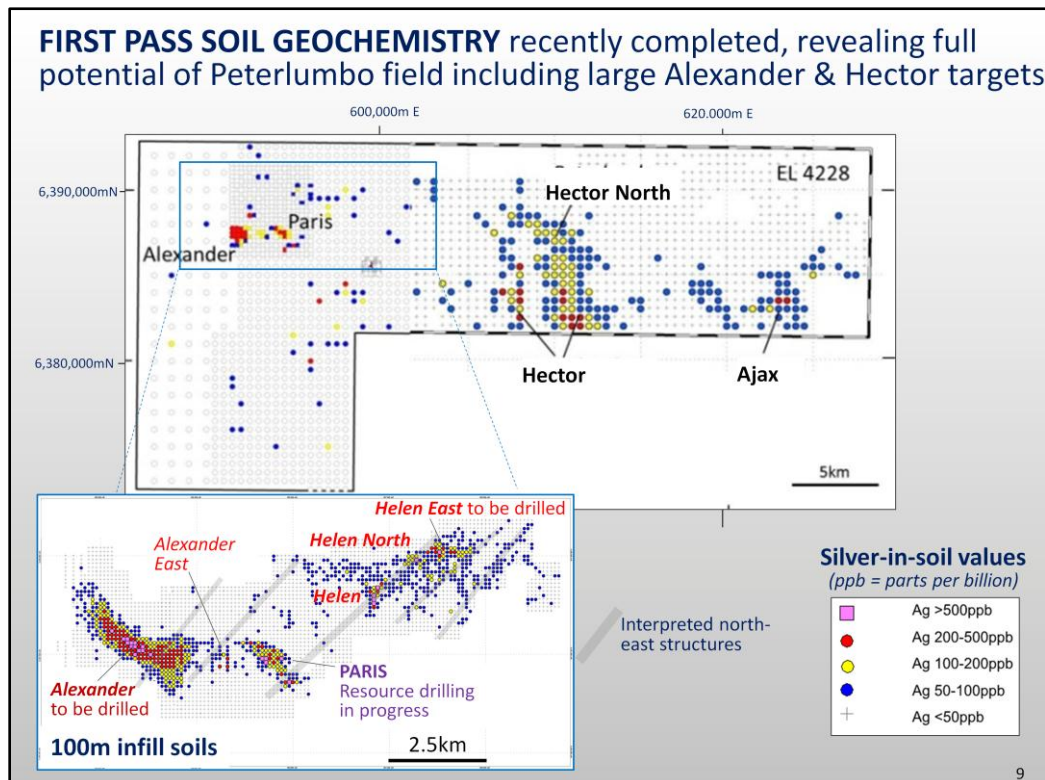
THE PETERLUMBO FIELD WAS SELECTED FOR THE FIRST EXPLORATION WITH INFILL SOIL GEOCHEMISTRY. THIS WAS BECAUSE THE FIELD SAT AT THE INTERSECTION OF THE MOONTA CORRIDOR WITH THE UNO FAULT BOUNDARY WITH THE SOUTHERN MARGIN OF THE GAWLER RANGE VOLCANICS WHERE EPITHERMAL DEPOSITS WERE PREDICTED. PETERLUMBO IS ALSO SITUATED NEXT TO THE WILCHERRY FIELD, FIRST DETECTED BY MAGNETIC AND CALCRETE GOLD EXPLORERS IN THE 1980'S AND 1990'S.

THE FIRST TARGET DRILLED IN THE PETERLUMBO FIELD RESULTED IN THE PARIS SILVER DISCOVERY.

THE SOIL DATASET ALSO ENABLED INVESTIGATOR TO SELECT NEW GROUND WITH HIGH SILVER POTENTIAL.

WE HAVE NOW DELINEATED FOUR NEW POTENTIAL SILVER FIELDS.

I WILL DESCRIBE THE PETERLUMBO FIELD AND THE PARIS SILVER DISCOVERY.



THE FIRST PASS SOIL GEOCHEMISTRY IS SHOWN FOR THE PETERLUMBO TENEMENT. THE TENEMENT IS SUBJECT TO THE PETERLUMBO JOINT VENTURE. INVESTIGATOR HAS 75% INTEREST IN THIS TENEMENT AND IS MANAGER. MEGA HINDMARSH RESOURCES HAS 25% INTEREST.

THIS MAP SHOWS THE SILVER TARGETS. THE GREY POINTS ARE WHERE SOIL SAMPLES WERE TAKEN AND ANALYSED BY MODERN LOW-LEVEL GEOCHEMISTRY. WHERE THE SILVER-IN-SOIL VALUES ARE ANOMALOUS, THE SAMPLE POINTS ARE COLOURED WITH RED BEING THE CENTRE OF THE SILVER TARGETS.

THE WESTERN HALF OF THE TENEMENT WAS SOIL SAMPLED FIRST, WITH PARIS AND ALEXANDER INITIALLY DELINEATED IN 2010.

SCOUT DRILLING AT PARIS IN 2011 IMMEDIATELY INTERSECTED SILVER SO OUR EXPLORATION HAS FOCUSED ON DRILLING PARIS SINCE THAT TIME.

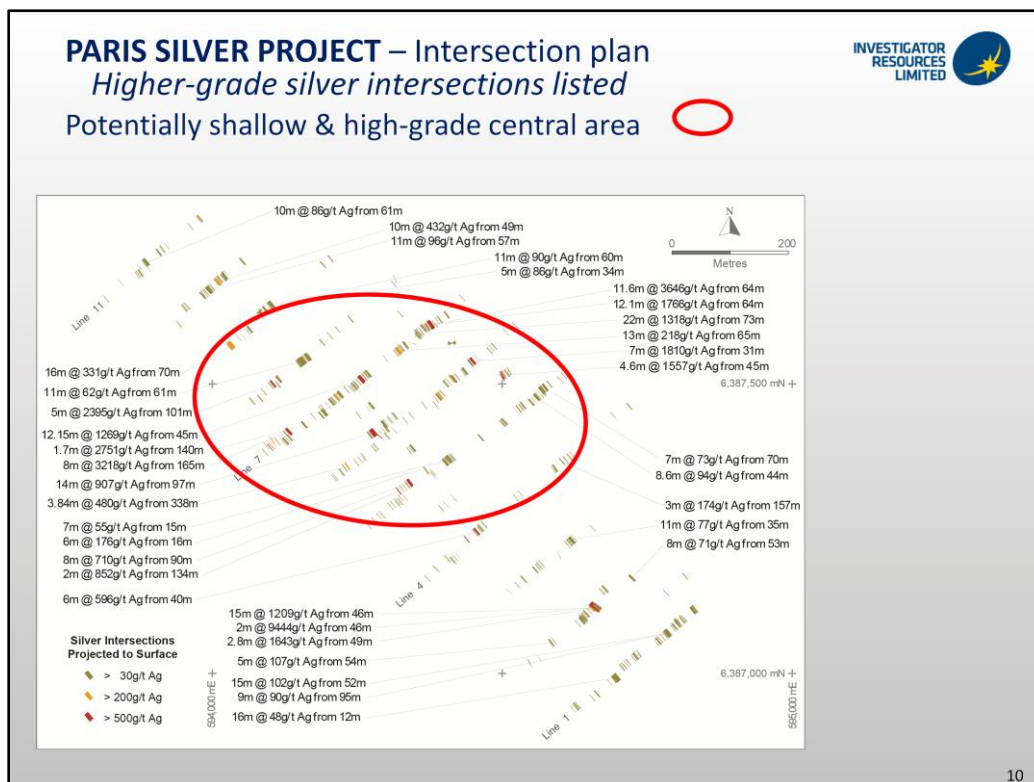
THE SOIL GEOCHEMISTRY WAS EXTENDED ACROSS THE EASTERN HALF OF THE TENEMENT LATE IN 2012. THIS DELINEATED NEW TARGETS AT HECTOR AND AJAX.

DETAILING OF THE PARIS AREA WITH 100M GRID INFILL SOIL GEOCHEMISTRY (Inset) WAS RECENTLY COMPLETED. THIS REVEALED OTHER NEW PRIORITY TARGETS IN ALEXANDER AND HELEN EAST AND CONFIRMS WE HAVE THE EXCITING OPPORTUNITY OF EXPLORING A LARGE SILVER FIELD FOR THE FIRST TIME FROM THE SURFACE DOWN.

THE DISTRIBUTION OF SILVER TARGETS APPEARS CONTROLLED BY NORTHWEST AND NORTHEAST STRUCTURES SO WE ARE STARTING TO UNDERSTAND THE ARCHITECTURE AND FURTHER POTENTIAL OF THE PETERLUMBO FIELD.

THE ALEXANDER AND HECTOR TARGETS HAVE MUCH LARGER SOIL SIGNATURES THAN PARIS. WE ARE PLANNING TO DRILL TEST THESE EXCITING SILVER TARGETS IN THE SEPTEMBER QUARTER.

I WILL NOW DESCRIBE THE PARIS SILVER PROSPECT INITIALLY DEFINED BY THE ONE KILOMETRE LONG SOIL TARGET.



HERE IS A PLAN SHOWING ALL THE SILVER DRILL INTERSECTIONS TO MARCH PROJECTED TO THE SURFACE. THE EXTENT OF SILVER CLOSELY MATCHES THE ONE KILOMETRE BY UP TO 400 METRES EXTENT OF THE INITIAL SOIL TARGET, GIVING CONFIDENCE TO THE LIKELIHOOD THAT SILVER IS UNDER OUR NUMEROUS UNTESTED SILVER-IN-SOIL TARGETS ELSEWHERE.

THE BETTER SILVER INTERSECTIONS ARE LISTED WITH MANY HIGH GRADE INTERSECTIONS MADE PARTICULARLY IN THE CENTRAL AREA WITHIN THE RED ELLIPSE.

EXAMPLES ARE:-

- 11.6M AT 3.464 GRAMS PER TONNE SILVER IN THE NORTHEASTERN AREA
- 8 METRES AT 3,218 GRAMS PER TONNE SILVER IN THE WESTERN AREA
- 15 METRES AT 1,209 GRAMS PER TONNE SILVER IN THE SOUTHERN PART OF THE LARGE PROSPECT.

THE PARIS INTERSECTIONS ARE GENERALLY SHALLOW AT BETWEEN 40 METRES AND 120 METRES DEPTH FROM SURFACE. THOSE DEPTHS ARE WITHIN POTENTIAL OPEN-PITTABLE RANGE.

THE SILVER IS INTERPRETED TO OCCUR AS SEVERAL FLAT-LYING SHEETS AT THE CONTACT BETWEEN THE BASEMENT CARBONATE ROCKS AND THE BASE OF THE GAWLER RANGE VOLCANICS.

THE GEOLOGY IS SIMILAR TO THE SETTING FOR THE STYLE OF EPITHERMAL SILVER DEPOSITS THAT ARE THE MAJOR SILVER PRODUCING MINES IN LATIN AMERICA.

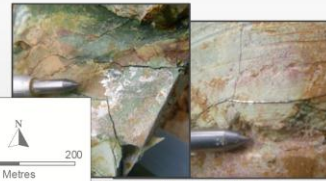
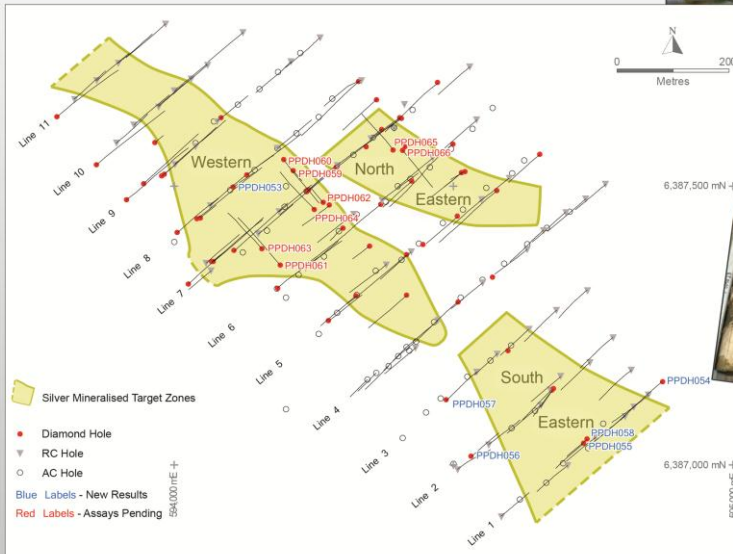
THE PARIS GEOLOGY IS COMPLEX IN THE CENTRAL HIGHER-GRADE AREA REQUIRING CLOSER-SPACED AND ON-GOING DRILLING.

THREE DRILL RIGS ARE CURRENTLY DRILLING IN THE CENTRAL AREA.

PARIS SILVER PROJECT – Drill hole Plan (to end April – 66 holes)



Infill drilling towards resource estimation
with current drilling of higher-grade central area
with orthogonal diamond holes



Native silver at 61.9m
in hole PPDH061



Dark friable sulphide
band in altered &
veined dolomite at
126m in hole PPDH060

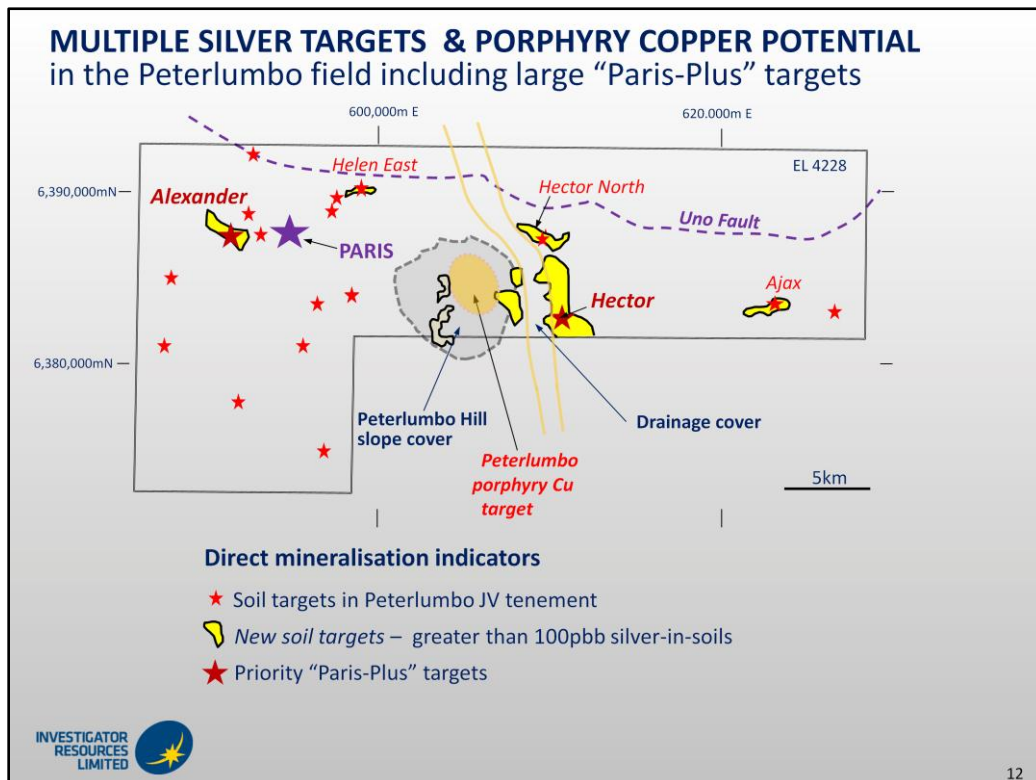
11

DRILLING WAS INITIALLY UNDERTAKEN ON NOMINAL 100 METRES SPACED LINES ALONG THE ENTIRE ONE KILOMETRE LONG PROSPECT.

SIXTY SIX DIAMOND DRILL HOLES WERE COMPLETED TO THE END OF APRIL WITH ON-GOING DRILLING CURRENTLY FOCUSED ON THE CENTRAL AREA.

THREE DIAMOND RIGS ARE DRILLING THERE WITH SOME HOLES ORIENTED AT RIGHT-ANGLES TO THE PRIOR DRILLING.

WE AIM TO PRODUCE A MAIDEN RESOURCE ESTIMATE IN THE SEPTEMBER QUARTER.



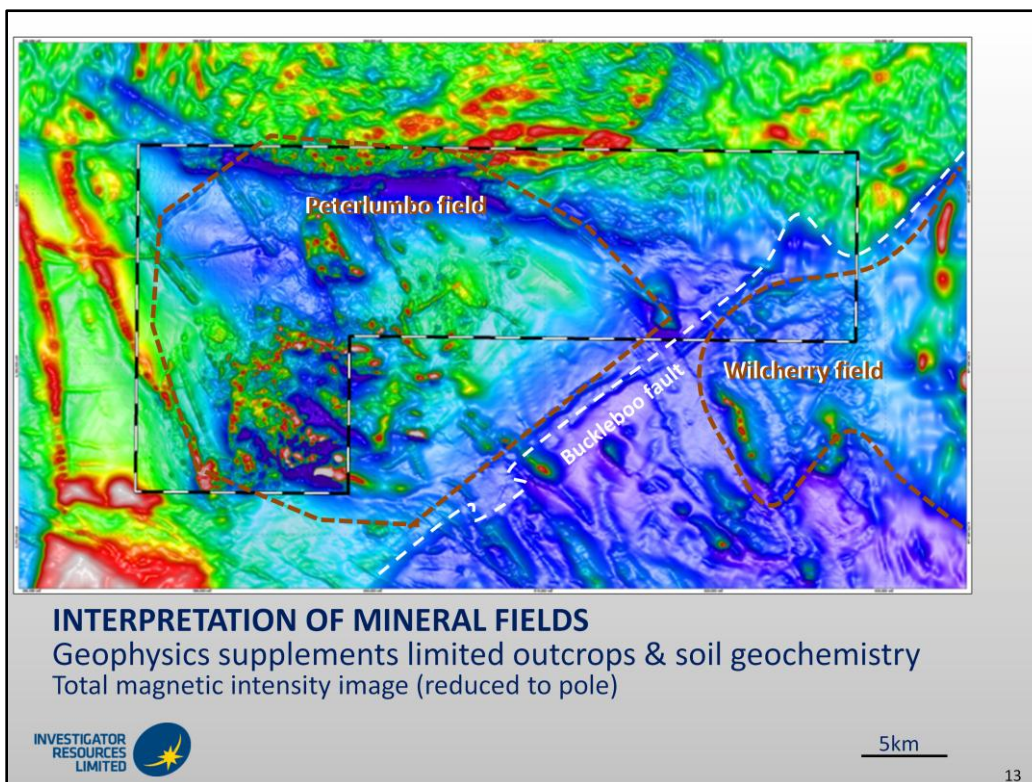
THE PARIS PROSPECT IS JUST THE BEGINNING FOR THE POTENTIAL OF THE PETERLUMBO FIELD.

AMONGST THE ABUNDANT SOIL TARGETS, THE PRIORITIES ARE THE TWO LARGE SILVER TARGETS AT ALEXANDER (TWO KILOMETRES WEST OF PARIS) AND HECTOR (15 KILOMETRES EAST).

THERE IS ALSO PRIORITY TO TEST THE CONCEPT OF THE PETERLUMBO PORPHYRY COPPER GOLD TARGET WHERE THE SOIL GEOCHEMISTRY WILL NOT WORK DUE TO THE SCREE COVER OF THE ADJACENT PETERLUMBO HILL.

THE PROJECT AREA IS SITUATED IN A PASTORAL LEASE WHERE NATIVE TITLE HAS BEEN SATISFACTORILY SETTLED. INVESTIGATOR HAS AN INDIGENOUS LAND USE AGREEMENT (“ILUA”) WITH THE NATIVE TITLE HOLDERS AND IS ABLE TO PROCEED WITH EXPLORATION SUBJECT TO HERITAGE SURVEYS.

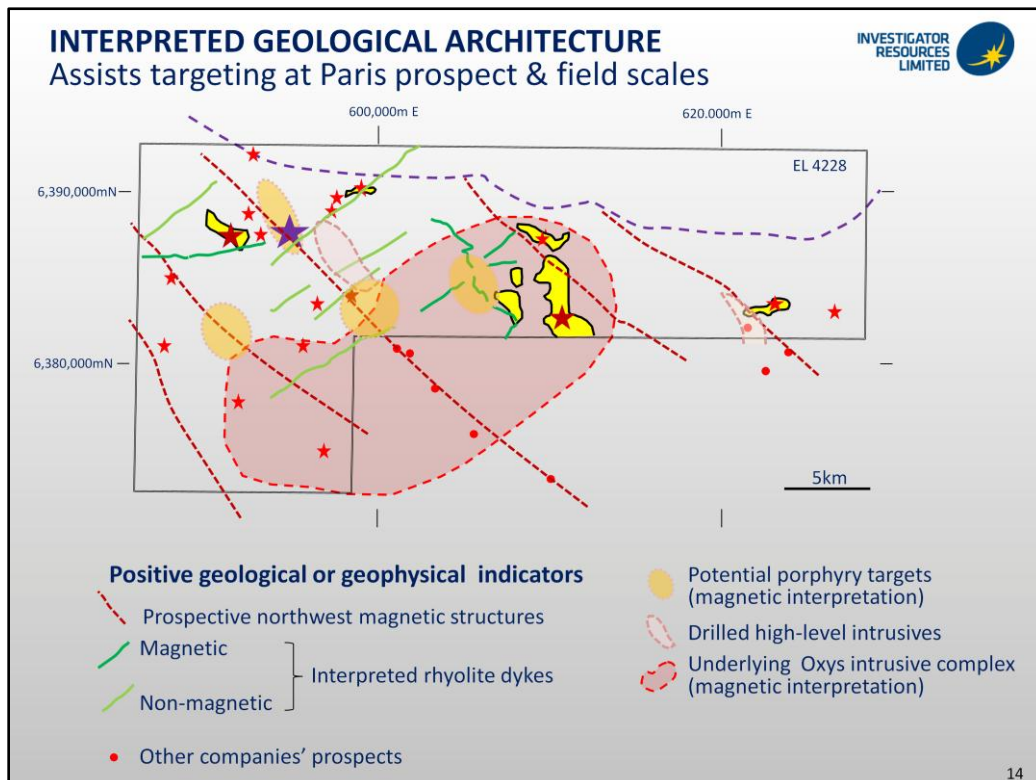
PARIS WAS CLEARED FOR DRILLING IN 2010. ANOTHER HERITAGE SURVEY WAS RECENTLY UNDERTAKEN OVER ALEXANDER, HECTOR AND PETERLUMBO WITH LITTLE RESTRICTION EXPECTED FOR DRILLING.



GEOPHYSICS IS BEING USED TO FURTHER BUILD OUR UNDERSTANDING OF THE POTENTIAL OF THE PETERLUMBO FIELD.

THE PETERLUMBO PORPHYRY TARGET WITH RADIATING DYKES IS INTERPRETED IN THE CENTRE OF THE TENEMENT.

THE PETERLUMBO FIELD MAY BE AN OFFSET EXTENSION OF THE WILCHERRY FIELD WHERE A NUMBER OF LEAD/ZINC/SILVER, GOLD AND MAGNETITE DEPOSITS HAVE BEEN DISCOVERED SINCE 1983.



THIS IS THE CURRENT INTERPRETATION PLAN OF THE GEOLOGICAL ARCHITECTURE FOR THE PETERLUMBO FIELD.

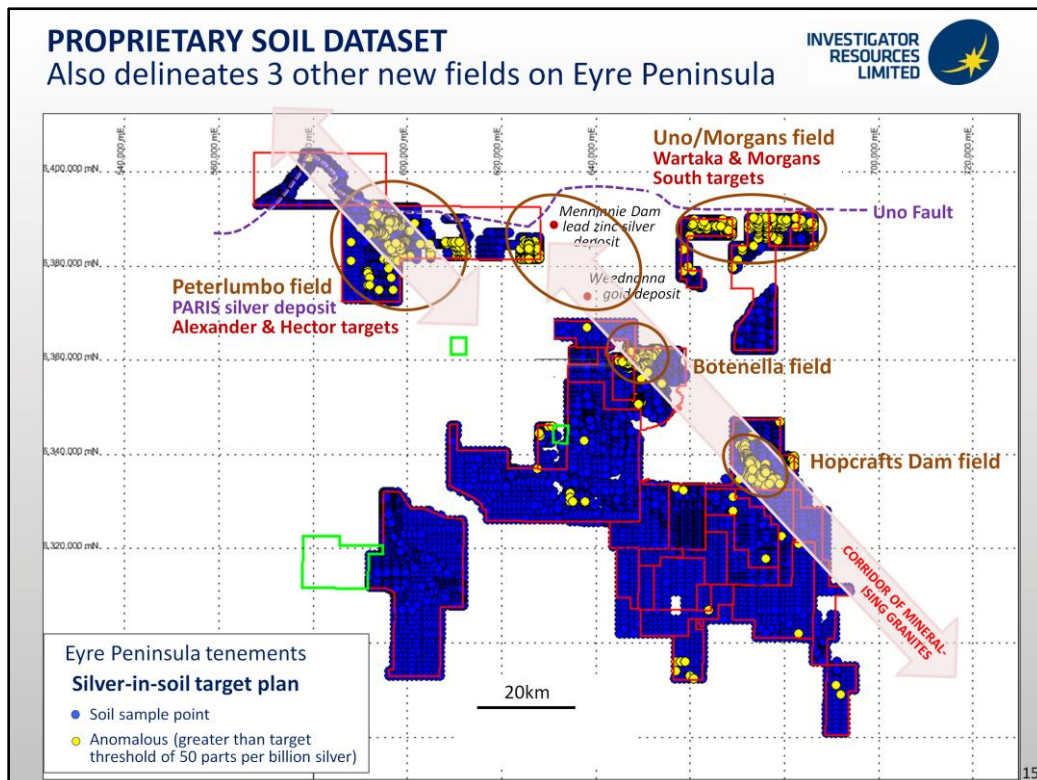
THE CONCEPTUAL PORPHYRY TARGET OVER THE CENTRAL PINK AREA MAY BE THE DRIVER FOR THE FIELD WHERE THERE IS COPPER GOLD POTENTIAL.

NORTHWEST STRUCTURES CARRY MINERALISATION FURTHER OUT IN THE FIELD WITH THE BEST PLACE FOR SILVER DEPOSITS LIKELY TO BE AT THE INTERSECTION WITH NORTHEAST RHYOLITE DYKES.

THE RECOGNITION OF SIGNIFICANT SILVER POTENTIAL AND POSSIBLE PORPHYRY SYSTEMS IN SOUTH AUSTRALIA IS A MAJOR DEVELOPMENT FOR THE STATE'S MINERAL AND MINING POTENTIAL.

SUCH BREAKTROUGHES HAVE BEEN A RARE SITUATION IN AUSTRALIAN EXPLORATION DURING MODERN TIMES BUT SHOWS AUSTRALIA IS NOT EXPLORATION-MATURE.

AUSTRALIA'S GREENFIELDS MINERALS POTENTIAL IS REAWAKENING. PETERLUMBO IS LIKELY TO JOIN THE RECENT FIELD FINDS LIKE DOOLGUNNA AND NOVA IN WESTERN AUSTRALIA AND INVESTIGATOR IS WELL POSITIONED TO LEAD AND BENEFIT FROM ITS INNOVATIVE WORK IN ITS SELECTED EXPLORATION REGION.

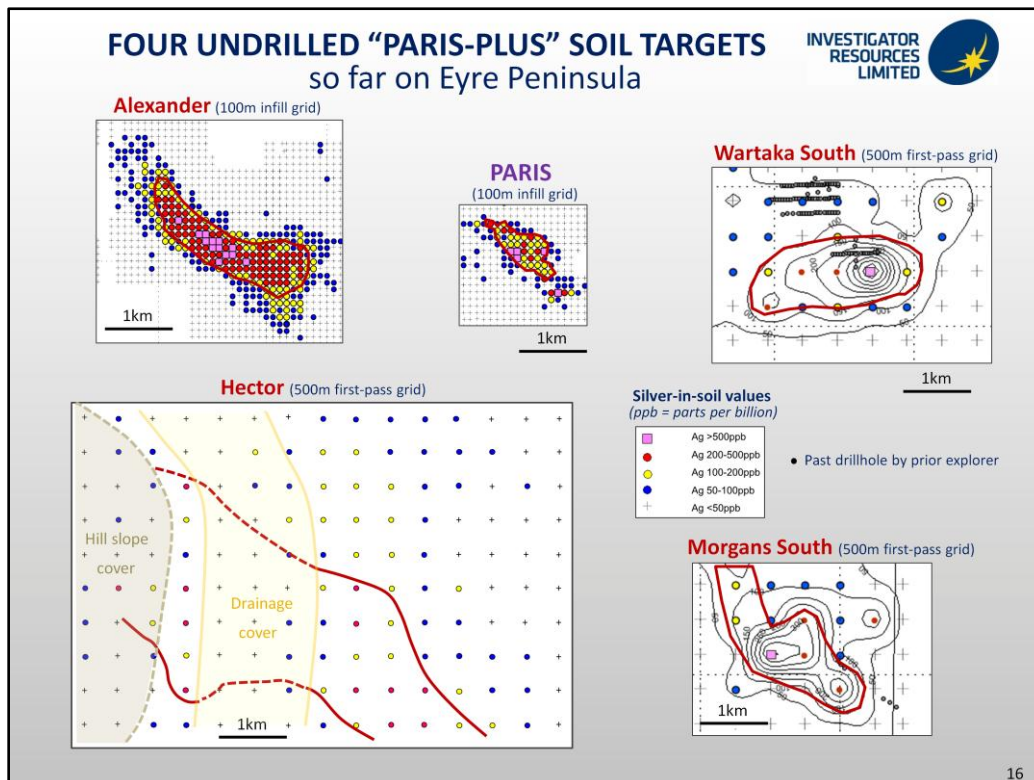


THERE IS FURTHER LEVERAGE TO OUR PROPRIETARY SOIL GEOCHEMICAL DATASET OVER OUR EXTENSIVE GROUND HOLDINGS ON EYRE PENINSULA.

THE DATASET IS REVEALING OTHER NEW POTENTIAL SILVER FIELDS CONSISTENT WITH THE PREDICTED GEOLOGY OF THE MOONTA CORRIDOR MODEL:-

- INVESTIGATOR HAS ALREADY SCOUT DRILLED THE BOTENELLA FIELD AND SHOWN GOLD AND SILVER MINERALISATION UNDER THE SOIL TARGETS THERE.
- SCOUT DRILLING IS ABOUT TO TEST THE POTENTIAL OF THE HOPCRAFTS DAM FIELD; AND
- NEW GROUND AT UNO/MORGANS HAS REVEALED TWO NEW LARGE SILVER SOIL TARGETS AT WARTAKA SOUTH AND MORGANS SOUTH.

AS FIRST MOVERS IN THE RESURGING SOUTHERN GAWLER CRATON, INVESTIGATOR IS WELL POSITIONED WITH MULTIPLE SILVER TARGETS IN MULTIPLE NEW FIELDS THAT ALSO HAVE COPPER GOLD POTENTIAL.



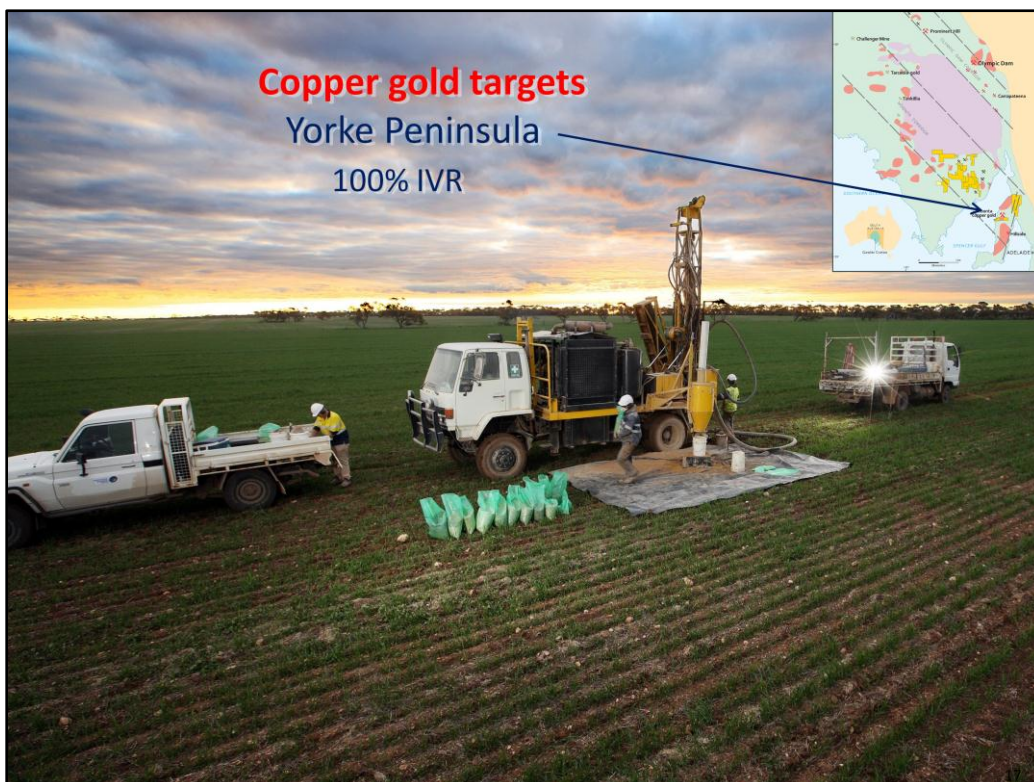
OUR PRIORITIES FOR 2013 ARE PARIS AND THE LARGER SILVER TARGETS AT ALEXANDER AND HECTOR NEAR PARIS AND AT WARTAKA SOUTH AND MORGANS SOUTH ABOUT 85 KILOMETRES EAST OF PARIS. THESE NEW TARGETS THAT ARE POTENTIALLY LARGER THAN PARIS ARE CALLED “PARIS-PLUS” TARGETS

PARIS, ALEXANDER AND HECTOR ARE UNDER THE 75% PETERLUMBO JOINT VENTURE, WHEREAS WARTAKA SOUTH AND MORGANS SOUTH ARE 100% HELD BY INVESTIGATOR.

IN PARALLEL WITH THE PARIS DRILLING AND RESOURCE ESTIMATION, WORK IS PROGRESSING AS FAST AS POSSIBLE ON THE OTHER PRIORITY TARGETS. THIS IS TO ENSURE WE ARE IN A POSITION TO COMPARE THE TARGETS BY THE END OF THE SEPTEMBER QUARTER IN CASE THE OTHER TARGETS SHOW GREATER POTENTIAL THAN PARIS.

HERITAGE SURVEYS ARE COMPLETED FOR ALEXANDER AND HECTOR. HECTOR HAS UNDERGONE INFILL SOIL SAMPLING WITH RESULTS AWAITED. DRILLING IS PLANNED FOR ALEXANDER, HECTOR AND THE COVERED PETERLUMBO PROPHYRY TARGET FROM JULY.

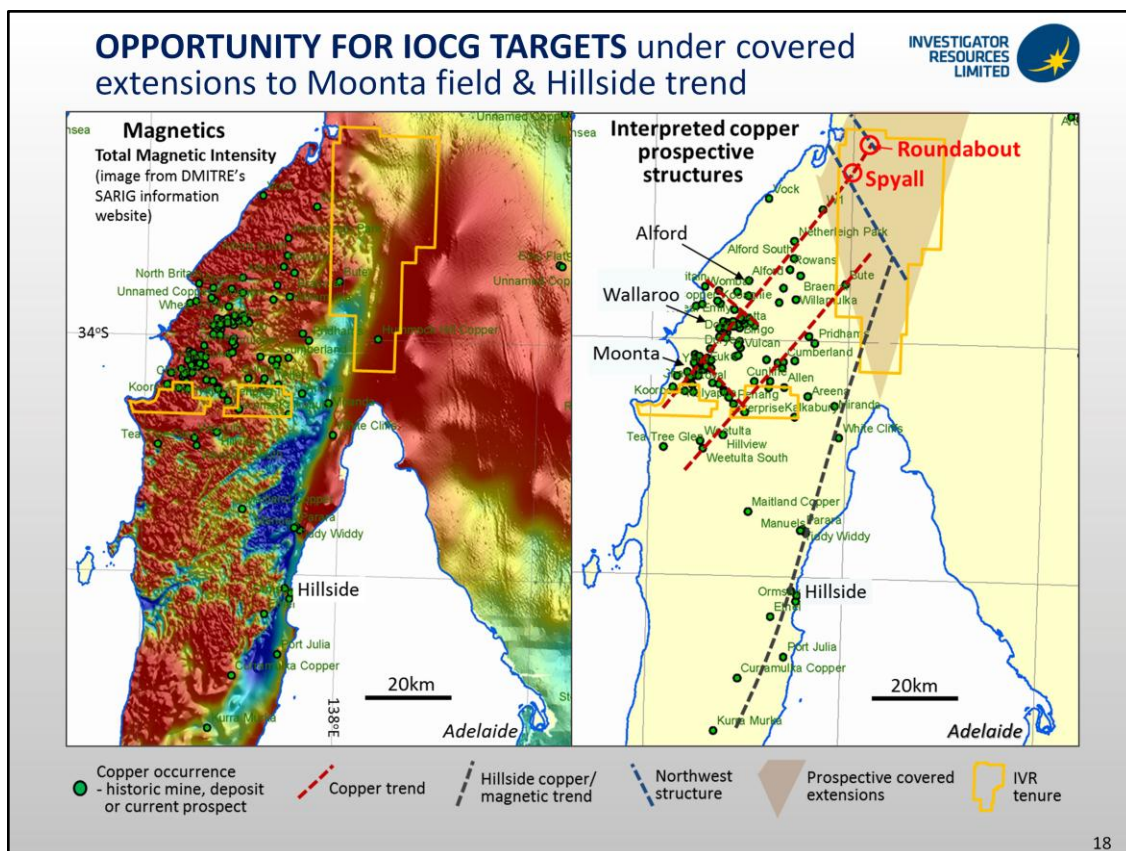
THE WARTAKA SOUTH AND MORGANS SOUTH TARGETS HAVE BEEN INFILL SOIL SAMPLED WITH RESULTS ALSO PENDING. ACCESS PROCEDURES ARE REQUIRED BEFORE DRILLING CAN COMMENCE.



INVESTIGATOR HAS A MORE STANDARD EXPLORATION PROGRAM FOR IOCG COPPER GOLD ON THE YORKE PENINSULA SEGMENT OF THE MOONTA CORRIDOR.

HERE WE HOLD THE PROPERTIES 100% AND WE ARE EXPLORING ON FARMLAND.

SO WE ARE NOT SUBJECT TO NATIVE TITLE BUT WE HAVE TO COORDINATE OUR EXPLORATION WITH FARMING ACTIVITIES.



THE ADVANTAGE INVESTIGATOR HAS HERE IS WE ARE MAKING A DISCOVERY OPPORTUNITY OUT OF WHAT WAS A CHALLENGE TO PAST EXPLORERS.

THIS HAS BEEN DEVELOPED IN THE COVERED EXTENSIONS TO THE HISTORIC MOONTA COPPER GOLD FIELD AND THE TREND EXTENDING FROM THE RECENT DISCOVERY OF THE LARGE COPPER DEPOSIT AT HILLSIDE BY REX MINERALS.

OUR TENEMENTS ARE SHOWN AS YELLOW OUTLINES WITH THE MAIN ACTIVITY ON THE LARGEST AREA OF ABOUT 1,000 SQUARE KILOMETRES ON THE NORTHERN PENINSULA.

THE MAGNETIC IMAGE ON THE LEFT AND THE DISTRIBUTION OF HISTORIC MINES AND MODERN PROSPECTS SHOWS THE INVESTIGATOR GROUND IS HIGHLY PROSPECTIVE UNDER ABOUT 200 METRES OF YOUNGER COVER GEOLOGY. THE COVER THAT THWARTED PAST EXPLORERS IS SHOWN IN BROWN.

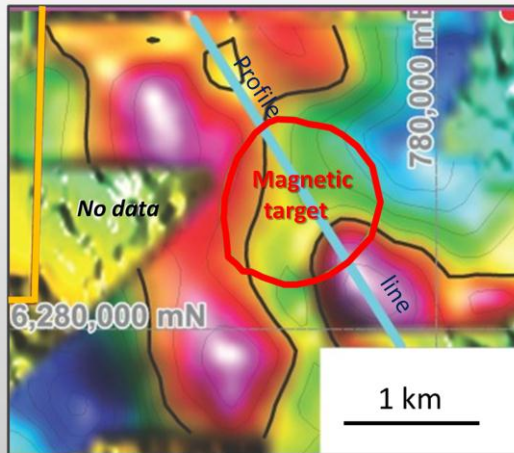
THE APPLICATION OF STANDARD MAGNETIC AND GRAVITY EXPLORATION FOR IOCG DEPOSITS UNDER 200 METRES OF COVER NEAR MOONTA IS A BETTER OPTION FOR A JUNIOR EXPLORER THAN DRILLING UP TO 1,000 METRES DEEP HOLES ON SIMILAR TARGETS NEAR OLYMPIC DAM.

SO INVESTIGATOR PROCEEDED WITH A MAGNETIC SURVEY DOWN THE WESTERN SIDE OF THE TENEMENT AREA IN 2012. THIS DELINEATED TWO POTENTIAL IOCG TARGETS AT ROUNDABOUT AND SPYALL. THESE ARE IN HIGHLY PROSPECTIVE STRUCTURAL LOCATIONS ACCORDING TO INVESTIGATOR'S MOONTA CORRIDOR MODEL.

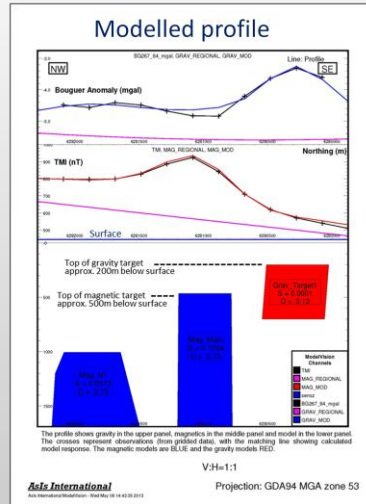
RECENT GRAVITY SURVEY UPGRADES ROUNDABOUT IOCG TARGET

Gravity targets surrounding initial magnetic target are prospective for shallow haematite-hosted copper

Bouguer gravity image



Modelled profile



Drill testing is intended at earliest opportunity subject to access & coordination with farming activities



19

PRIORITY WAS GIVEN TO THE ROUNDABOUT TARGET WHERE GRAVITY WAS RECENTLY DONE WITH POSITIVE RESULTS.

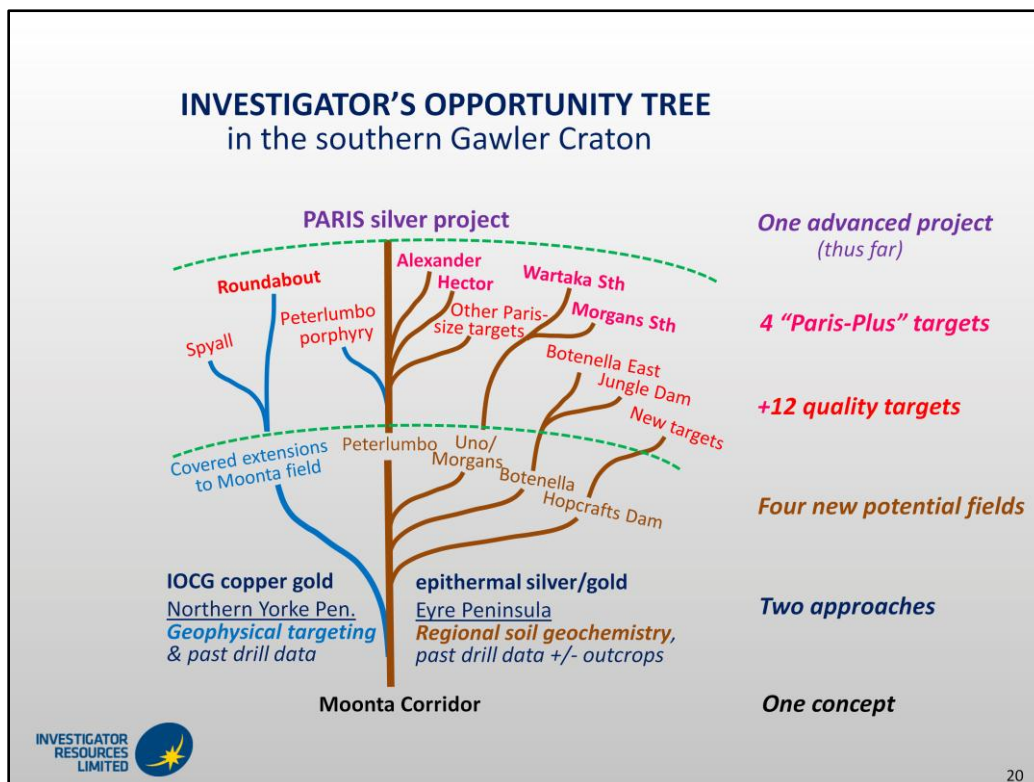
LARGE IF COMPLICATED GRAVITY TARGETS ARE DELINEATED AROUND THE ROUNDABOUT MAGNETIC TARGET AS REQUIRED FOR A GEOPHYSICAL IOCG TARGET.

SIMILAR SIGNATURES RESULTED IN THE PROMINENT HILL AND CARRAPATEENA IOCG DISCOVERIES.

THE GRAVITY TARGETS ARE MODELLED TO HAVE A DEPTH TO TOP OF ABOUT 200 METRES FROM THE SURFACE CONSISTENT WITH SCOUT DRILLING UNDERTAKEN THREE AND EIGHT KILOMETRES AWAY BY EARLY EXPLORERS IN 1979.

THE ROUNDABOUT TARGET IS THEREFORE AT REASONABLE DRILLABLE DEPTHS.

INVESTIGATOR IS AIMING TO DRILL ROUNDABOUT AT THE EARLIEST OPPORTUNITY WHICH COULD BE AS LATE AS JANUARY 2014 DEPENDING ON ACCESS AGREEMENTS BEING REACHED WITH FARMERS AND COORDINATION WITH FARMING ACTIVITIES.



SO INVESTIGATOR RESOURCES HAS DEVELOPED A SUPERB PORTFOLIO OF DISCOVERY OPPORTUNITIES FOR ITS SHAREHOLDERS BASED ON ONE REGION AND CONCEPT.

THE FIRST FIELD TO BE RECOGNISED UNDER THE MOONTA CORRIDOR CONCEPT HAS PRODUCED ONE SILVER DISCOVERY AND MULTIPLE OTHER SILVER TARGETS.

I BELIEVE INVESTIGATOR IS IN THE PROCESS OF DEFINING AND UPGRADING AT LEAST THREE OTHER SILVER FIELDS ON EYRE PENINSULA WITH FURTHER PARIS-PLUS TARGETS EMERGING.

INVESTIGATOR HAS REDUCED THE RISK OF OUR SILVER EXPLORATION BY SHOWING OUR APPROACH OF REGIONAL SOIL GEOCHEMISTRY IS VIABLE AND A GAME-CHANGER FOR SOUTH AUSTRALIAN EXPLORATION.

A HIGHER-RISK PURSUIT IS THE PORPHYRY COPPER CONCEPT AT PETERLUMBO THAT HAS THE HIGH-REWARD POTENTIAL OF TURNING SOUTH AUSTRALIAN EXPLORATION ON ITS HEAD BY FURTHER ADVANCING THE STATE'S GEOLOGY AND MINERAL POTENTIAL.

ANOTHER HIGH-RISK/HIGH-REWARD PROJECT IS THE GEOPHYSICAL TARGETING FOR IOCG'S ON YORKE PENINSULA BUT THE ADVANCE THERE IS IDENTIFYING AN UNEXPLORED THINLY COVERED EXTENSION TO AN ACTIVE IOCG BELT.

INVESTIGATOR HAS THE ENERGY AND FUNDS TO CAPITALISE ON ALL THESE OPPORTUNITIES WITH AN ON-GOING AGGRESSIVE PROGRAM ON THE PRIORITY TARGETS.



IVR is well funded and positioned to undertake high potential work on a number of significant silver & copper opportunities over the next four months:-

- Resource estimation & commencement of metallurgical studies for Paris silver prospect
- Drill test new “Paris-Plus” silver targets (Alexander* & Hector*) in the Peterlumbo field
- Scout drill the Peterlumbo porphyry copper concept*
- Seek drill access to Wartaka South & Morgans South silver targets & Roundabout IOCG target
- Verifying the potential of the new Botenella & Hopcrafts Dam fields with further scout drilling

We are looking forward to the September quarter

(Access is being finalised)*

21

WE HAVE THE FUNDS TO CONTINUE OUR AGGRESSIVE PROGRAM TOWARDS TESTING A RANGE OF KEY TARGETS BY THE END OF THE SEPTEMBER QUARTER AND DECIDING AS TO WHERE IN THE PETERLUMBO FIELD AND INDEED, IN WHICH FIELD, INVESTIGATOR’S BEST OPPORTUNITIES LIE.

I EXPECT INVESTIGATOR WILL BE ONE OF THE FEW JUNIOR EXPLORATION COMPANIES WITH RESULTS AND THE MOMENTUM TO BE WELL POSITIONED TO GROW WHEN THE MINERALS INVESTMENT MARKET DECIDES TO IMPROVE.

THANK YOU LADIES AND GENTLEMEN FOR YOUR INTEREST IN THE INVESTIGATOR STORY.

IT IS DEVELOPING INTO A GOOD ONE AND WE ARE PLEASED TO PRESENT INVESTIGATOR TO YOU.



Competent Person Statement

The information in this presentation that relates to Exploration Results and Mineral Resources is based on information compiled by John Anderson (BSc(Hons)Geol) who is a member of the Australasian Institute of Mining and Metallurgy and is bound by and follows the Institute's codes and recommended practices. Mr Anderson is a full-time employee of Investigator Resources Limited. He has sufficient experience which is relevant to the styles of mineralisation and types of deposits under consideration and to the activities being undertaken to qualify as a Competent Person as defined in the 2004 Edition of the "Australasian Code for Reporting of Exploration Results, Mineral Resources and Ore Reserves". Mr. Anderson consents to the inclusion in the report of the matters based on his information in the form and context in which it appears.