



ASX ANNOUNCEMENT / MEDIA RELEASE

ASX:ABU

August 6th, 2012

Diggers & Dealers Presentation

Mr Darren Holden, Managing Director of ABM Resources NL, will be presenting at this year's Diggers and Dealers Conference in Kalgoorlie, Western Australia. The presentation commences at 11:50am on Tuesday 7th August 2012. The presentation contains information including recently released results from the Old Pirate High Grade Gold Deposit, the Buccaneer Porphyry Gold Deposit and the Golden Hind Discovery. All of which are located on the Company's Twin Bonanza Gold Project.

About ABM Resources NL

ABM Resources is an exploration company developing several gold discoveries in the Tanami-Arunta region of the Northern Territory of Australia. The Company has a multi-tiered approach to exploration and development with a combination of high grade potentially short-term production scenarios such as Old Pirate, large scale discoveries such as Buccaneer, and regional exploration discoveries such as the Kroda Gold Project. In addition, ABM Resources is committed to regional exploration programs throughout its extensive holdings.

ABM Resources is well capitalised to achieve its milestones in 2012 and into 2013 with \$23M in cash (as of quarterly report dated 30 June 2012).

Signed

A handwritten signature in blue ink, appearing to read 'Darren Holden'.

Darren Holden – Managing Director

For Further Information Please Contact

Jutta Zimmermann
CFO / Company Secretary
+61 8 9423 9777

Darren Holden
Managing Director
+61 8 9423 9777

Berdine Mastaglia
Investor Relations Manager
+61 8 9423 9777

ABM RESOURCES NL

Level 1, 141 Broadway Nedlands Western Australia 6009 . www.abmresources.com.au
Email: admin@abmresources.com.au . Tel: +61 8 9423 9777 . Fax: +61 8 9423 9733
ABN: 58 009 127 020

For personal use only

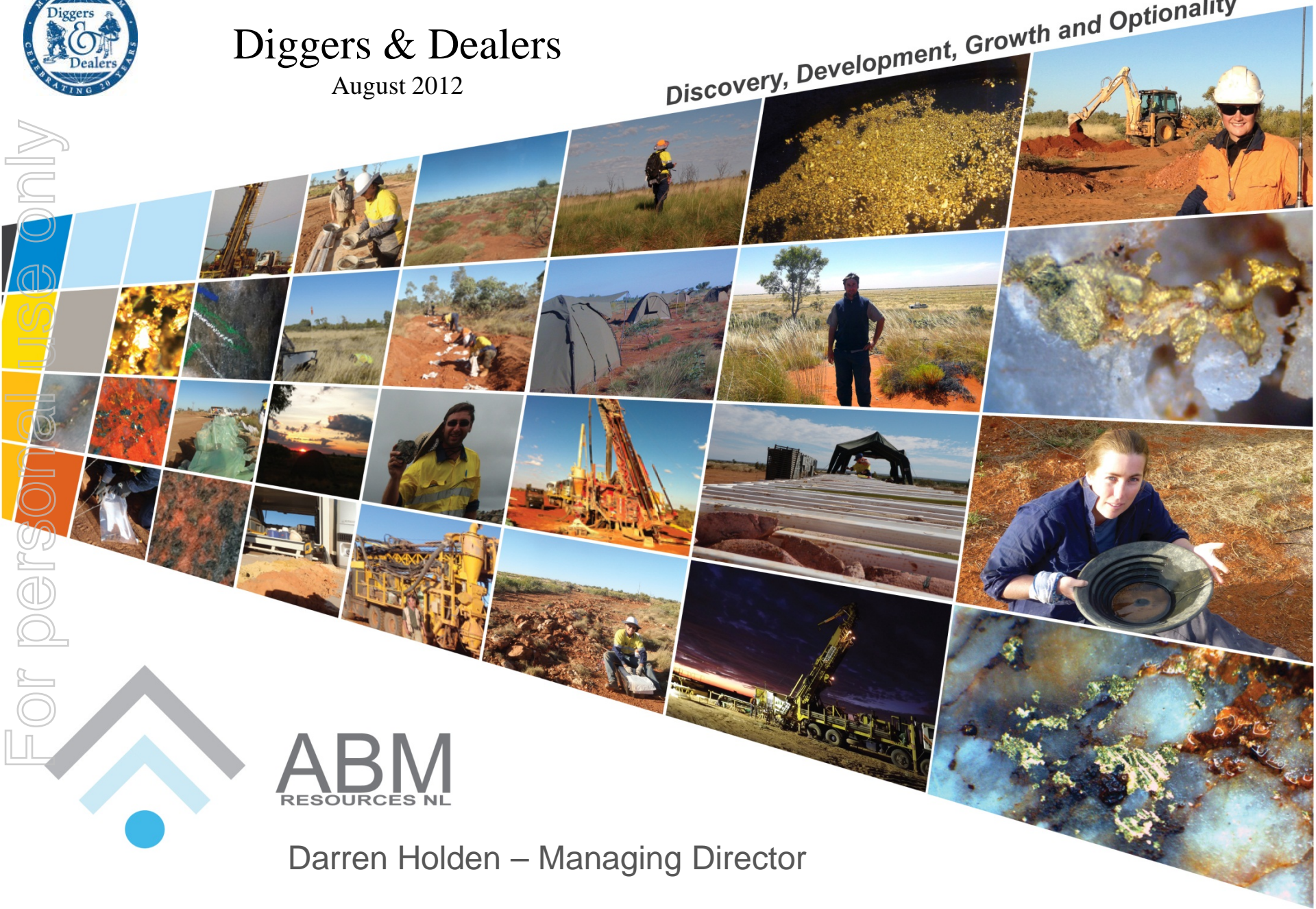


Diggers & Dealers

August 2012

Discovery, Development, Growth and Optionality

For personal use only



ABM
RESOURCES NL

Darren Holden – Managing Director

DISCLAIMER

- This presentation has been prepared by ABM Resources NL ("ABM" or the "Company"). It should not be considered as an offer or invitation to subscribe for or purchase any securities in the Company or as an inducement to make an offer or invitation with respect to those securities. No agreement to subscribe for securities in the Company will be entered into on the basis of this presentation.
- This presentation contains forecasts and forward looking information. Such forecasts and information are not a guarantee of future performance, involve unknown risks and uncertainties. Actual results and developments will almost certainly differ materially from those expressed or implied. ABM has not audited or investigated the accuracy or completeness of the information, statements and opinions contained in this presentation. Accordingly, to the maximum extent permitted by applicable laws, ABM makes no representation and can give no assurance, guarantee or warranty, express or implied, as to, and take no responsibility and assume no liability for, the authenticity, validity, accuracy, suitability or completeness of, or any errors in or omission from, any information, statement or opinion contained in this presentation.
- You should not act or refrain from acting in reliance on this presentation material. This overview of ABM does not purport to be all inclusive or contain all information which its recipients may require in order to make an informed assessment of the Company's prospects. You should conduct your own investigation and perform your own analysis in order to satisfy yourself as to the accuracy and completeness of the information, statements and opinions contained in this presentation and making any investment decision.

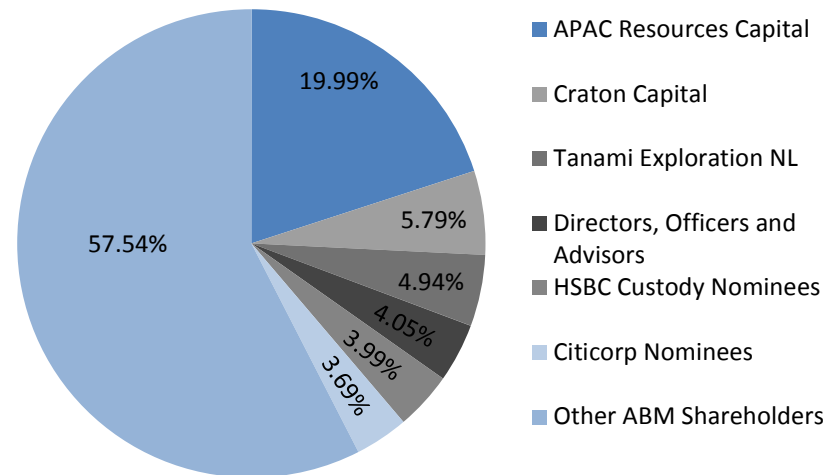
TECHNICAL STATEMENT / COMPETENT PERSONS STATEMENT

- The information in this report that relates to Exploration Results, Mineral Resources or Ore Reserves is based on information compiled by Mr Darren Holden who is a Member of The Australasian Institute of Mining and Metallurgy. Mr Holden is a full time employee of ABM Resources NL and has sufficient experience which is relevant to the style of mineralisation and type of deposit under consideration and to the activity which he is undertaking to qualify as a Competent Person as defined in the 2004 Edition of the "Australasian Code for Reporting Exploration Results, Mineral Resources and Ore Reserves". Mr Holden consents to the inclusion in the documents of the matters based on this information in the form and context in which it appears.
- Refer to previous Company Press-Releases for full resource estimation details, drill hole details, and intercept calculations. A full list is provided in Appendix C.

Corporate Snapshot

ASX Code	ABU
Shares on issue	3,241M
Share options (Ave Ex Price ~1.7c)	280M
Cash (30 June 2012)	\$23M
Market Cap (at 3.8 cents)	\$123.2M
Fully Diluted EV (at 3.8 cents)	\$113.4M

Major Shareholders



2 Year Share Price History



For personal use only

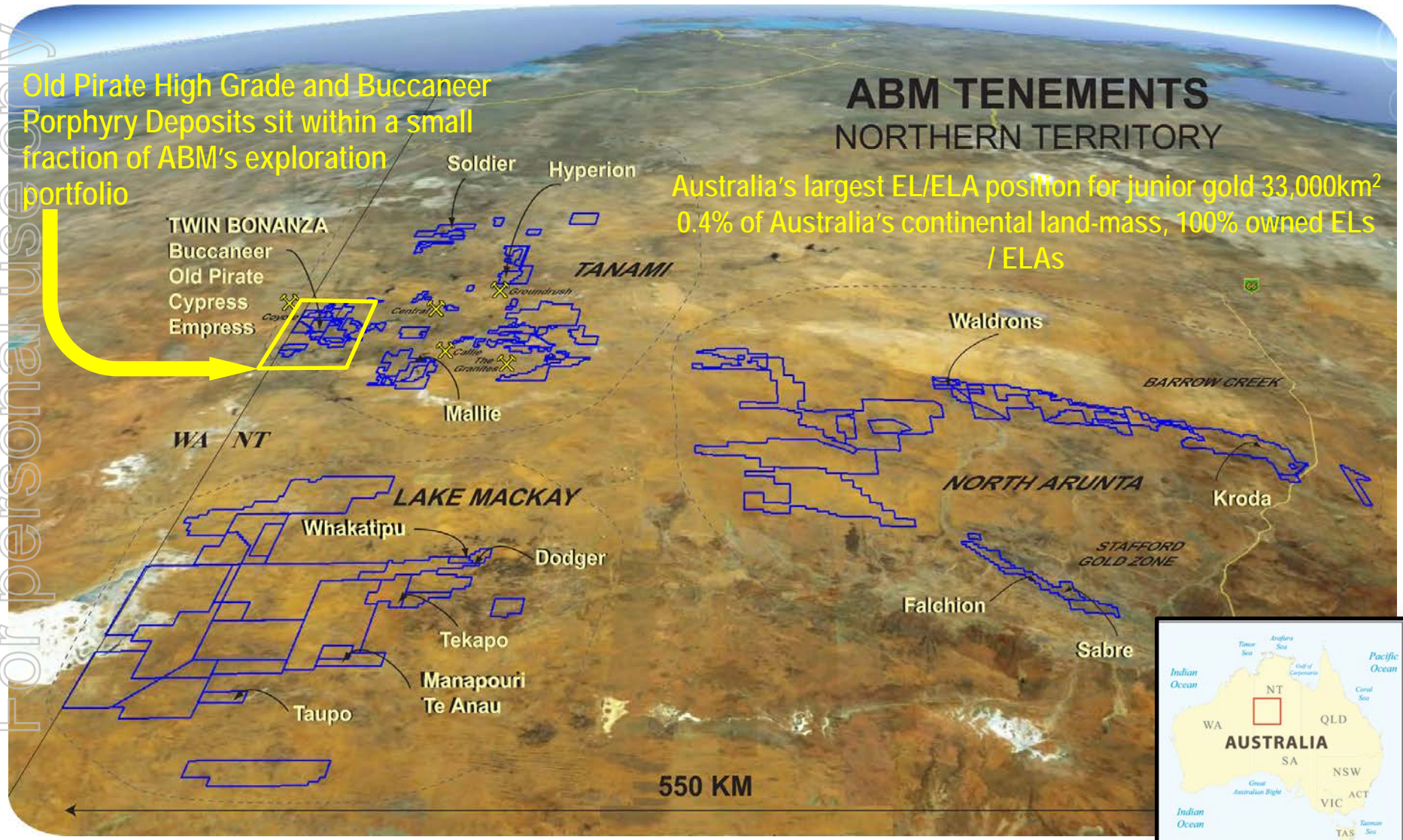
ABM's Significant Landholding

Old Pirate High Grade and Buccaneer Porphyry Deposits sit within a small fraction of ABM's exploration portfolio

TWIN BONANZA
Buccaneer
Old Pirate
Cypress
Empress

ABM TENEMENTS NORTHERN TERRITORY

Australia's largest EL/ELA position for junior gold 33,000km²
0.4% of Australia's continental land-mass, 100% owned ELs / ELAs



For personal use only

- The Central Desert of Australia is one the most **underexplored** Proterozoic Gold Provinces on the Planet.
- **3.3 million ounces of gold** in resource across multiple discoveries by ABM within the first two years of exploration.
- **High Grade** Old Pirate Project scoping study shows a robust **low CAPEX** project capable of generating significant near term free cash flow.
- Buccaneer Porphyry Gold deposit has grown to **2.67 million ounces gold** with upside potential to grow to a very large scale bulk tonnage system.
- ABM holds an extensive regional portfolio of exploration licences and applications covering **+33,000km²**.

OLD PIRATE HIGH GRADE PROJECT

- **Gold** in quartz veins up to several metres wide.
- Coarse visible gold from **surface to depths >200m**.
- **427,000 ounce** resource at 7.95g/t (top-cut).
- **565,000 ounce** resource at 10.5g/t (uncut).
- **\$257m profit** and very low capex indicated by scoping study over first 2 years of operation.
- **Multiple** extensions identified in 2012 pending drilling to resource.

BUCCANEER PORPHYRY GOLD DISCOVERY

- **First gold porphyry** hosted ore body discovered in the district.
- **2.67 million ounce** resource at 0.65g/t (0.2g/t cut-off) including higher grade zones of:
 - **1.57 million ounce** resource at 1.1g/t (0.6g/t cut-off).
- **Significant potential** at depth and along strike with higher grade zones.
- Re-optimisation of resource model focusing on **higher grade** zones in 2012.

REGIONAL EXPLORATION PORTFOLIO

- **60+ Au** and Au-Cu prospects providing multiple exploration targets.
- Advanced exploration targets include:
 - Hyperion - **202,200 oz Au** resource.
 - Kroda - pre-resource discovery with **29m @ 6.39g/t gold in drilling**.
 - Tulsa – major **untested** geochemistry anomaly.
 - Reynolds Range / Lake Mackay – regional exploration.

TWIN BONANZA GOLD PROJECT

Old Pirate – High Grade Resource

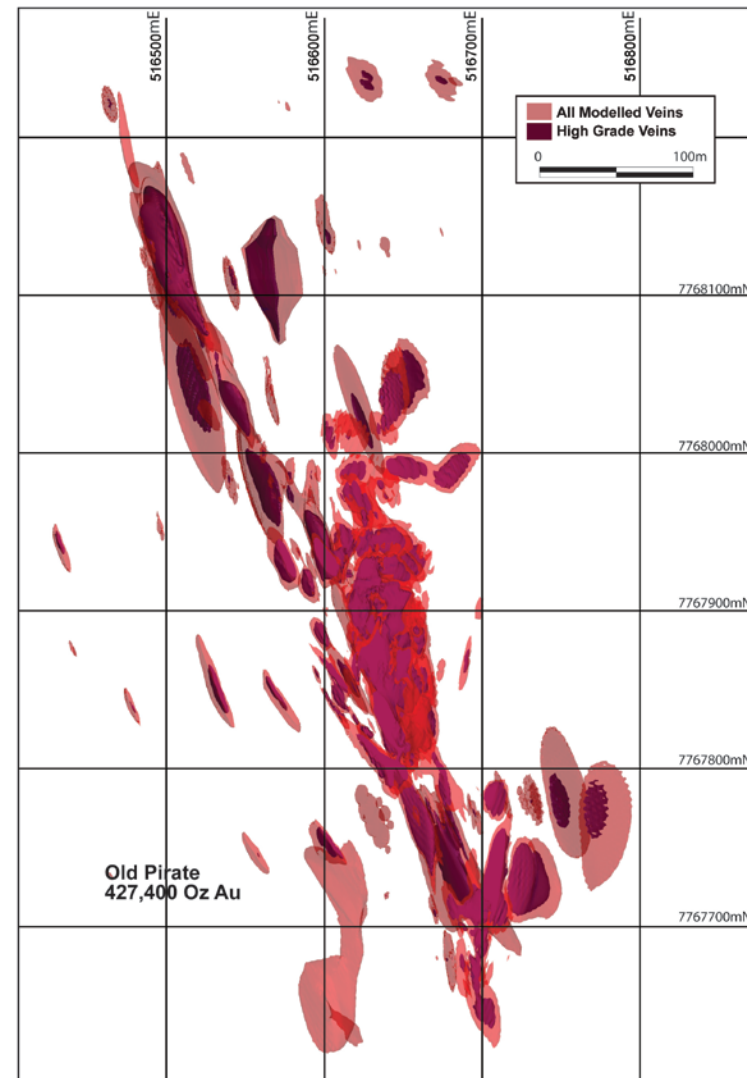
- Multiple **high grade / coarse gold** bearing quartz veins in folded shale horizons over 600m x 250m.
- Mineralisation from **surface** to a depth of >200m and **open in all directions**.
- Longitudinal surface sampling highlights a combined **1136m strike length of veins averaging 23g/t gold**.
- Metallurgical test-work indicates **85% recovery from gravity and 99.5% gravity+CIL**.

300g/t Top-Cut	Tonnes	Gold (g/t)	Ounces
Indicated	347,000	5.25	58,500
Inferred	1,327,000	8.65	368,900
Total *	1,673,000	7.95	427,400
No Top-Cut [#]	Tonnes	Gold (g/t)	Ounces
Indicated	347,000	5.31	59,200
Inferred	1,327,000	11.86	505,800
Total	1,673,000	10.5	565,000

Old Pirate JORC Resource (Maiden Resource April 2012)

Resource is significantly impacted by the high grade cut suggesting Old Pirate may mine at significantly higher grade

Old Pirate Resource - Plan View



Old Pirate – Stage 1 Scoping Study

Scoping Study highlights Old Pirate's robust economics and its significant free cash flow generation potential

- Independent Scoping Study by Entech Pty Ltd Mining Consultants in May 2012
- Based **only on open pit** Indicated and Inferred Resource to a depth of 100m.
- **Significant expansion potential** at depth, along strike and in repeat veins identified by surface sampling and not currently in resource.

Scoping Study Summary *

832,000 tonnes @ 11.5g/t Au extracted from open pit

261,000 ounces Au recovered over 2 years (85% grav recov)

Stand-alone gravity plant (no chemical processing)

\$27.1M capital expenditure

~A\$511 per ounce total costs

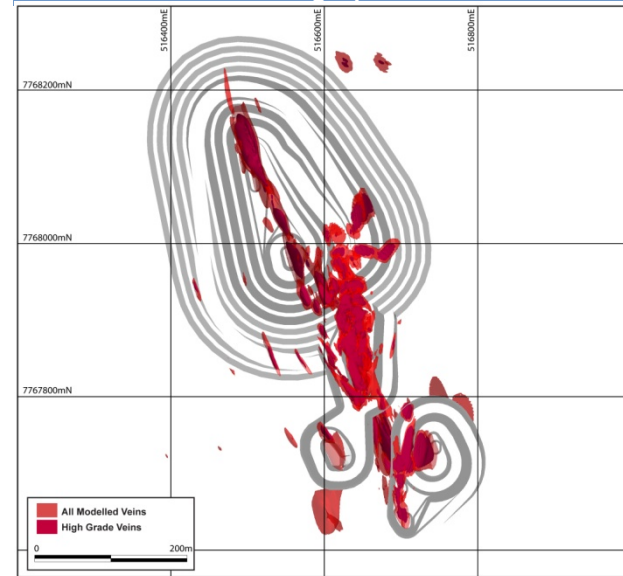
~A\$383 per ounce cash costs

Strip ratio 1:13

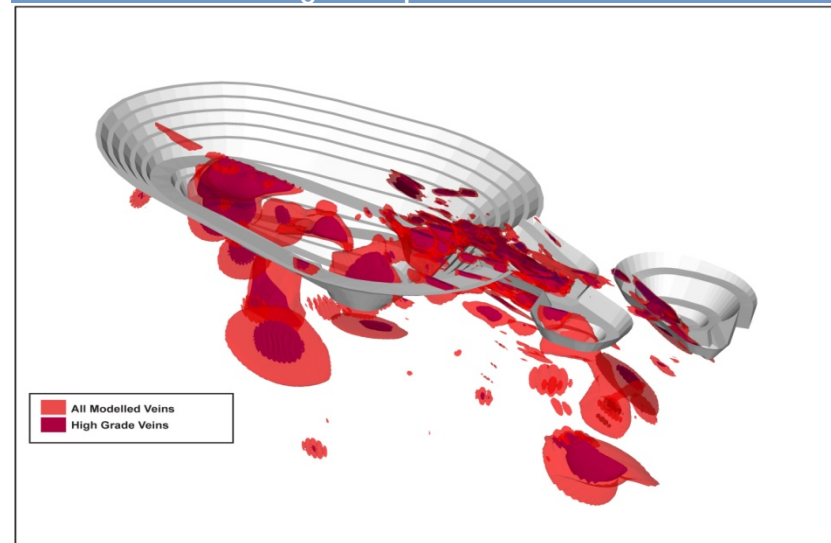
\$257M positive cash flow after expenses, royalties and capex

* Scoping study based on A\$1,600 per ounce Au price

Old Pirate – Pit Design plan view

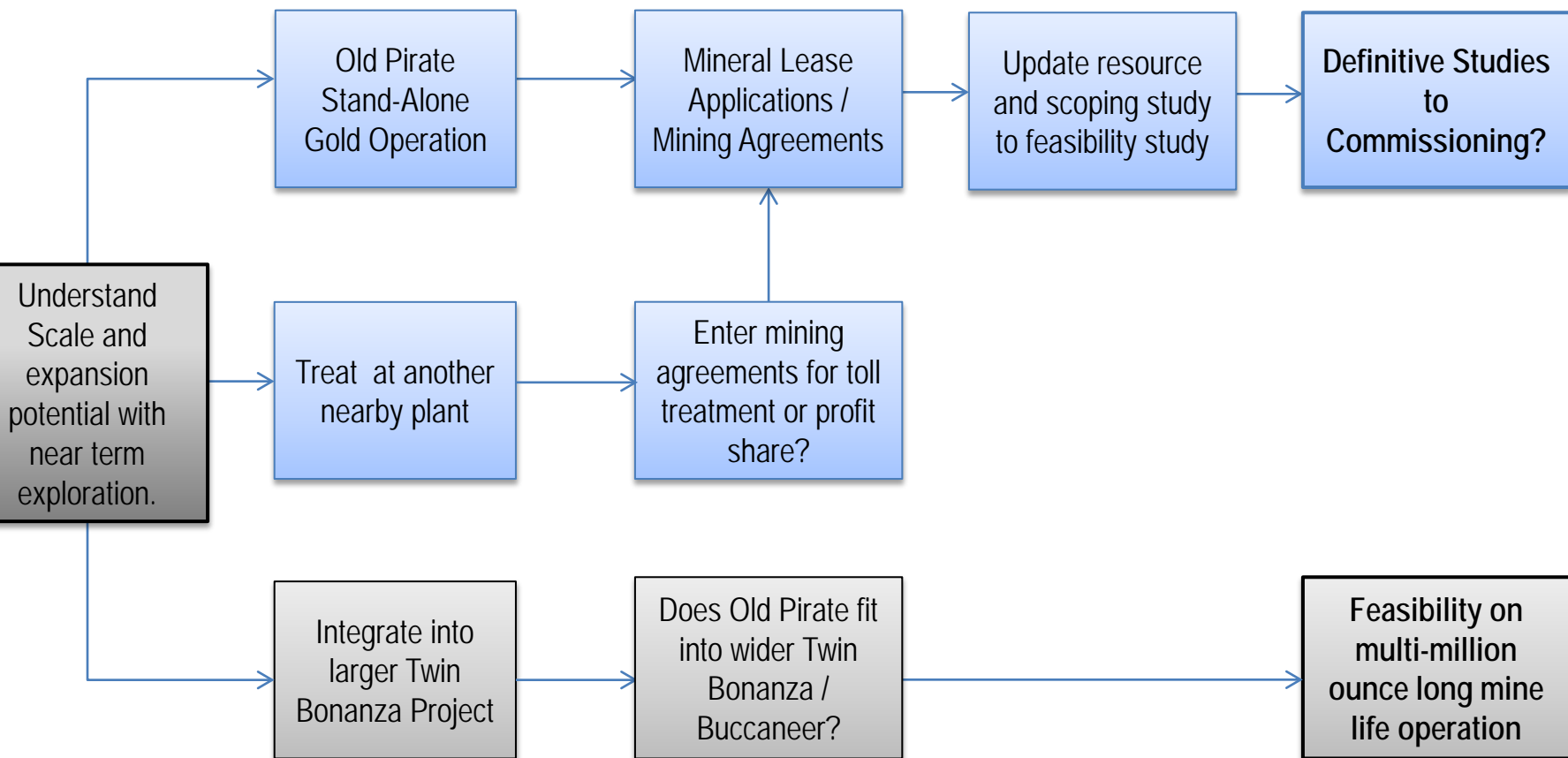


Old Pirate – Pit Design oblique view



Old Pirate – Options to Development?

Now  2013+



For personal use only

Old Pirate – Growth Potential

Significant exploration potential remains in repeat quartz vein structures identified by ABM

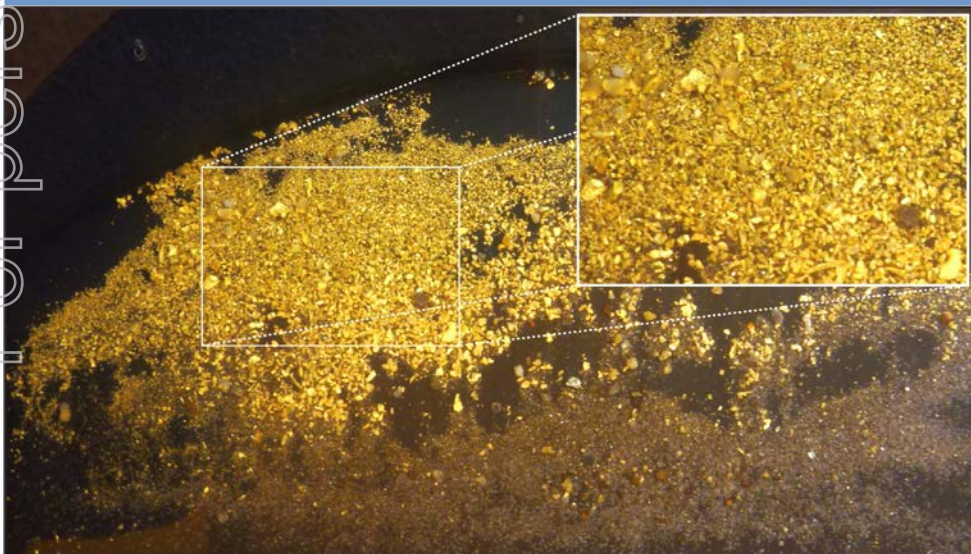
The 2012 exploration program has been designed to assess this potential

New Extensional Drill Results –

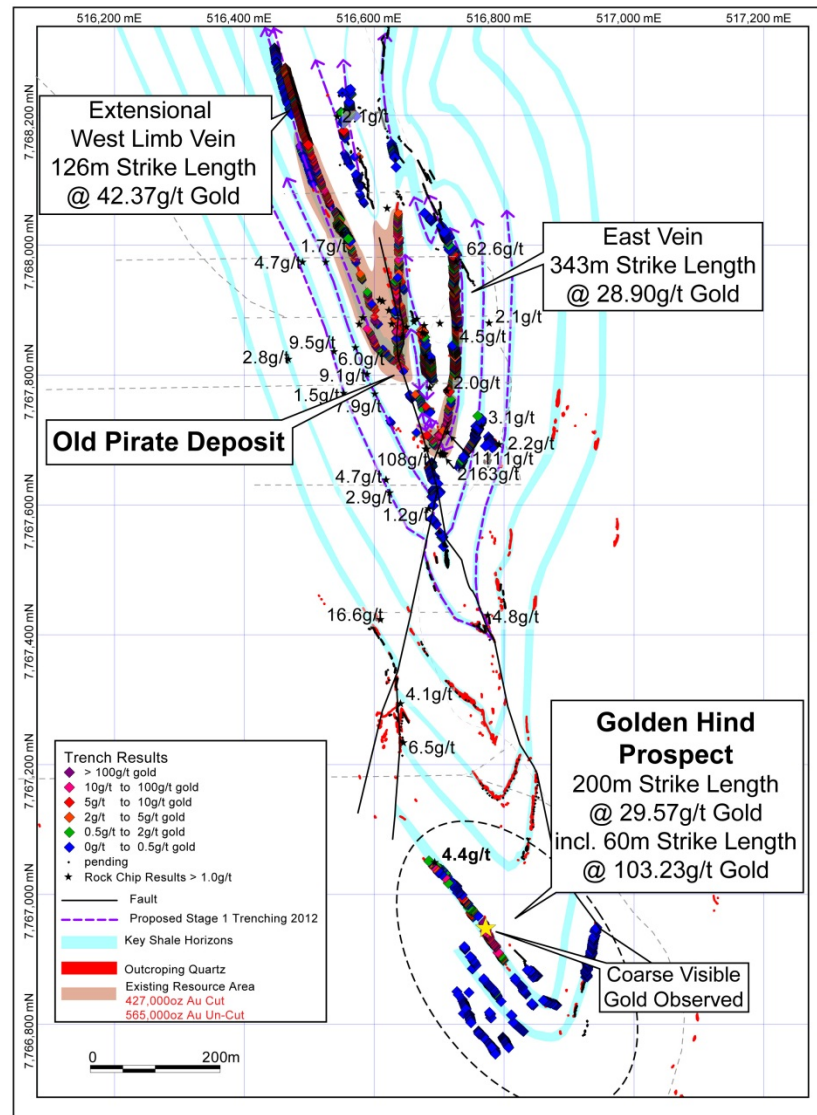
8m @ 24.14g/t gold extending Old Pirate South 90m down plunge

5m @ 52.17g/t gold on the Western Limb

Old Pirate: Panned high grade gold from RC chips at depth



Old Pirate: Potential Repeating Veins

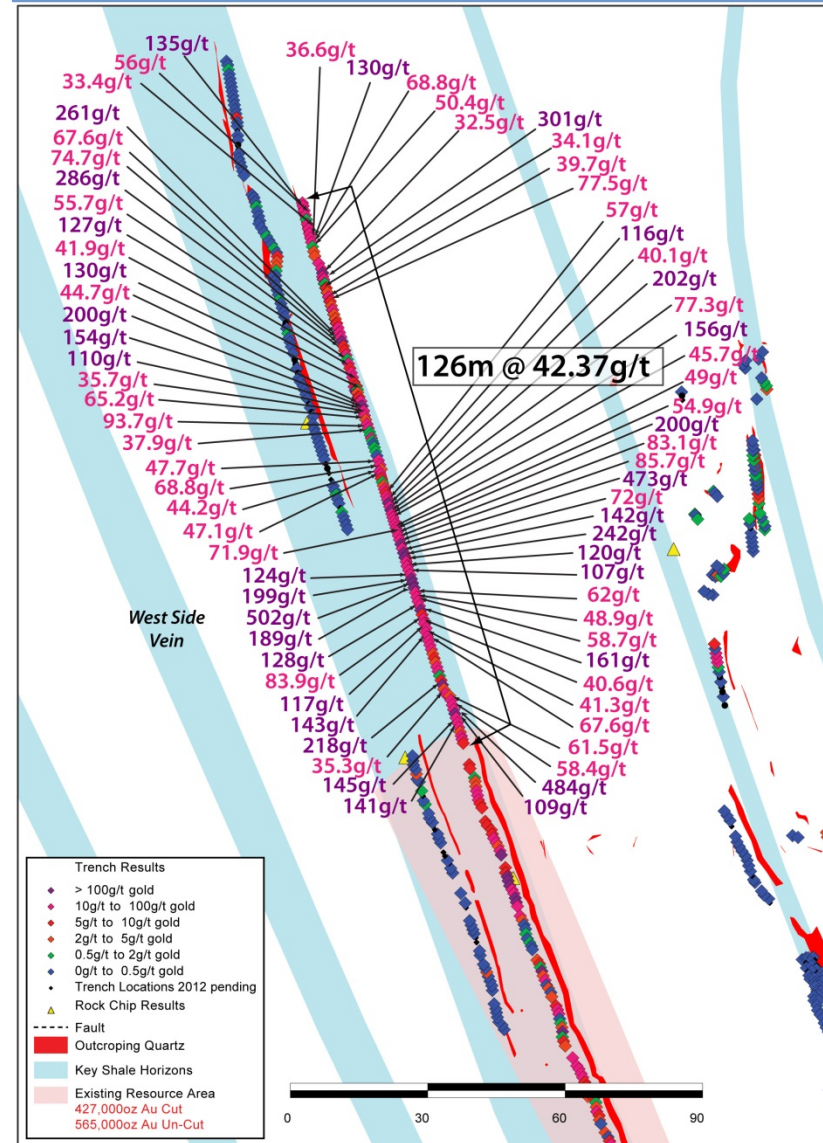


Old Pirate – Growth Potential – Western Limb

For personal use only

- A single **high grade structure** located on footwall of a shale unit.
- Widths in **outcrop** vary from 4m to 0.1m.
- Western Limb Extensions **not yet included in resource**.
- **126m strike length averaging 42.37g/t gold** from systematic surface sampling.
- Peak surface sample grade of **502g/t gold**.
- Remains **open to north** with further veins outcropping a further 650m along strike.
- Drilling underway with initial grades up to **18.70g/t gold** and further assays pending.

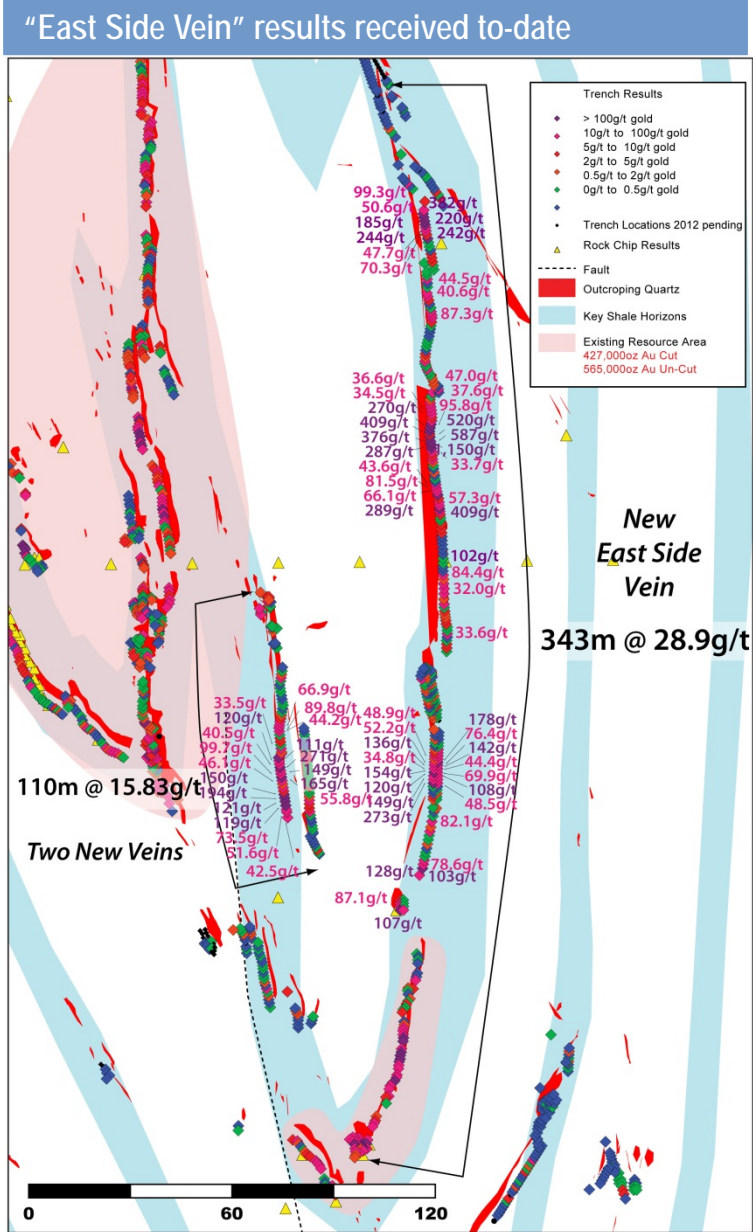
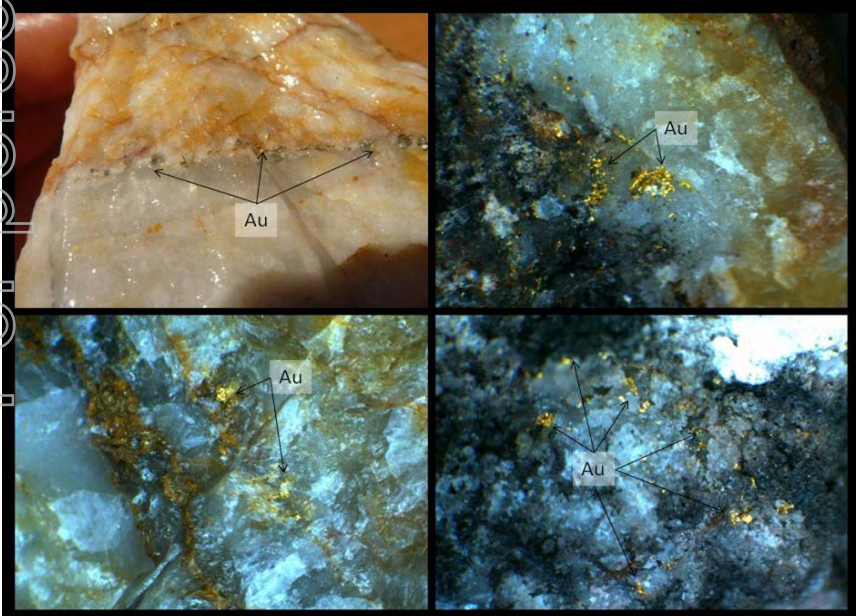
“Western Limb Extensions



Old Pirate – Growth Potential - East Side Vein

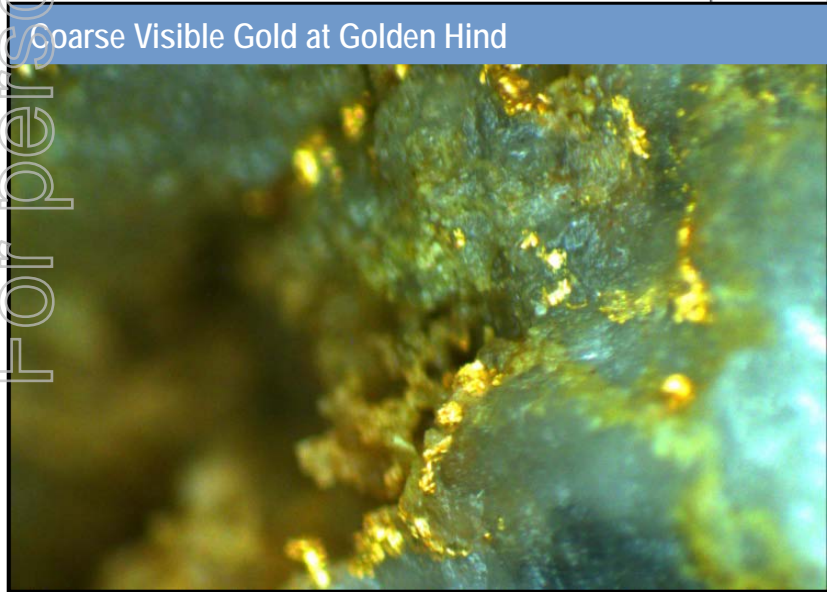
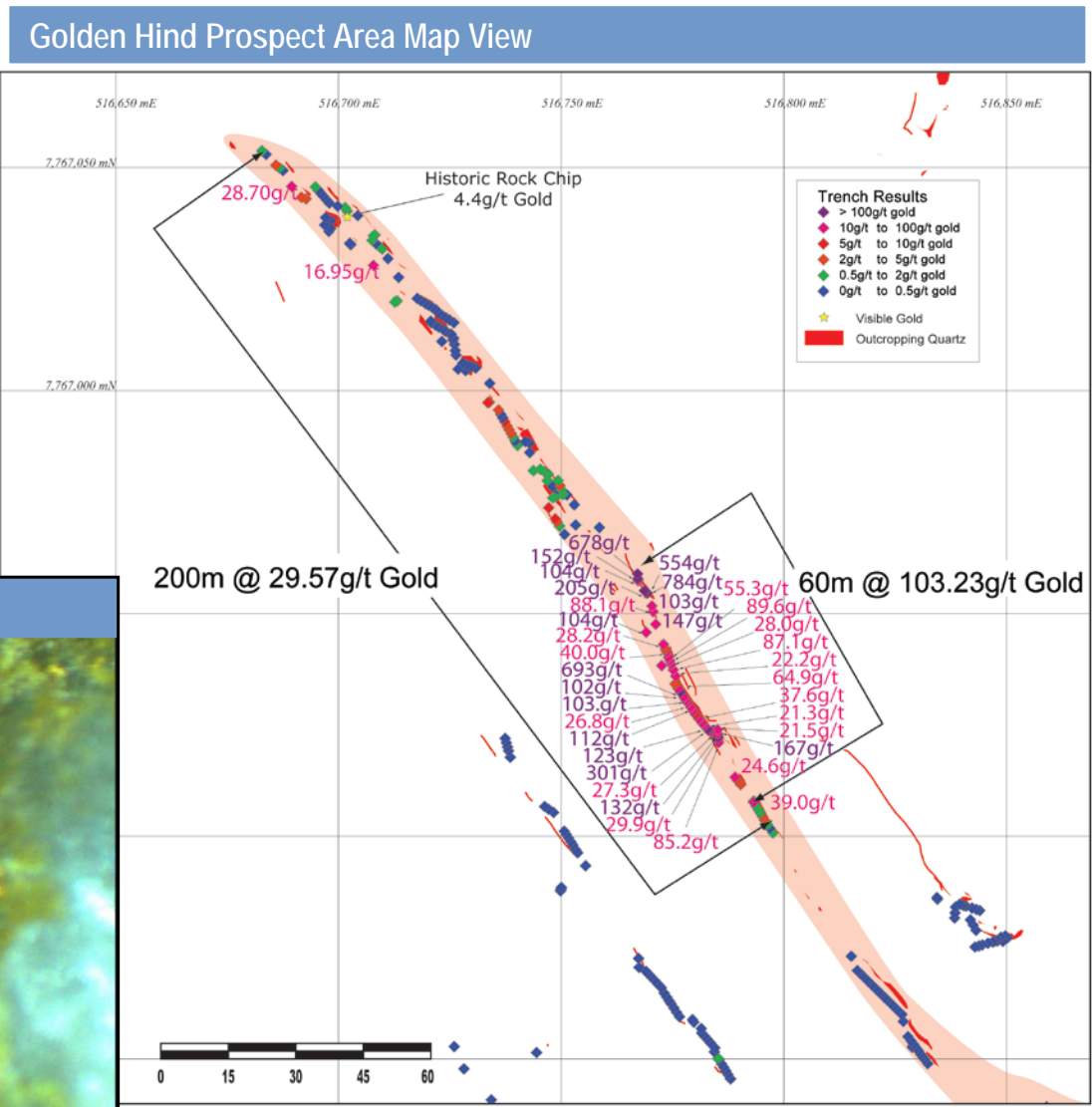
- New “East Side” Vein discovered 50m east of main Old Pirate area (outside existing resource).
- East Side vein will likely be encompassed in a widened pit design.
- Linking to OP South for total strike length 343 metres averaging 28.9g/t gold in surface sampling of veins up to 3m wide.
- Resource drilling underway.

Surface visible gold at the “East Side” vein



Old Pirate – Growth Potential – Golden Hind

- Golden Hind Prospect located 800m south of Old Pirate.
- Best visible gold seen to date on the project.
- 60m strike length averaging 103.23g/t gold from systematic surface sampling.
- Peak assay of 784g/t gold.
- Drilling to commence shortly.



For personal use only

Buccaneer Gold Porphyry

- The first intrusive related gold deposit discovered in the Tanami-Arunta Region.
- Located **only 2km** from Old Pirate.
- Has the scale potential to suggest low-strip ratio / bulk tonnage mining operation.
- Targeting initial Scoping Study in late 2012 / 2013.

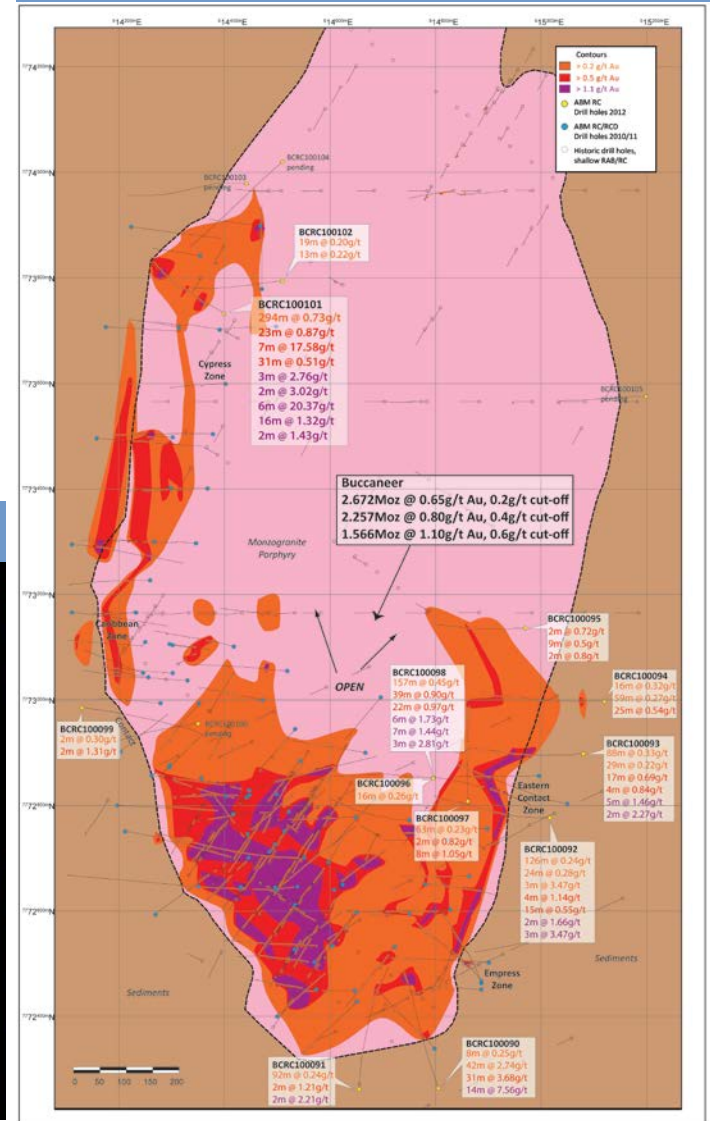
Significant Drill Results

- 221m @ 0.95g/t gold including
 - 172m @ 1.11g/t gold including
 - 81m @ 2.03 g/t gold
- 435m @ 0.69g/t gold including
 - 203m @ 1.07g/t gold
 - 41m @ 3.54g/t gold
 - 6m @ 19.84g/t gold
- 341m @ 0.69g/t gold including
 - 93m @ 0.70g/t gold, and
 - 127m @ 1.18g/t gold including
 - 67m @ 2.07g/t gold

Buccaneer: visible free gold



Buccaneer Porphyry Deposit Map View



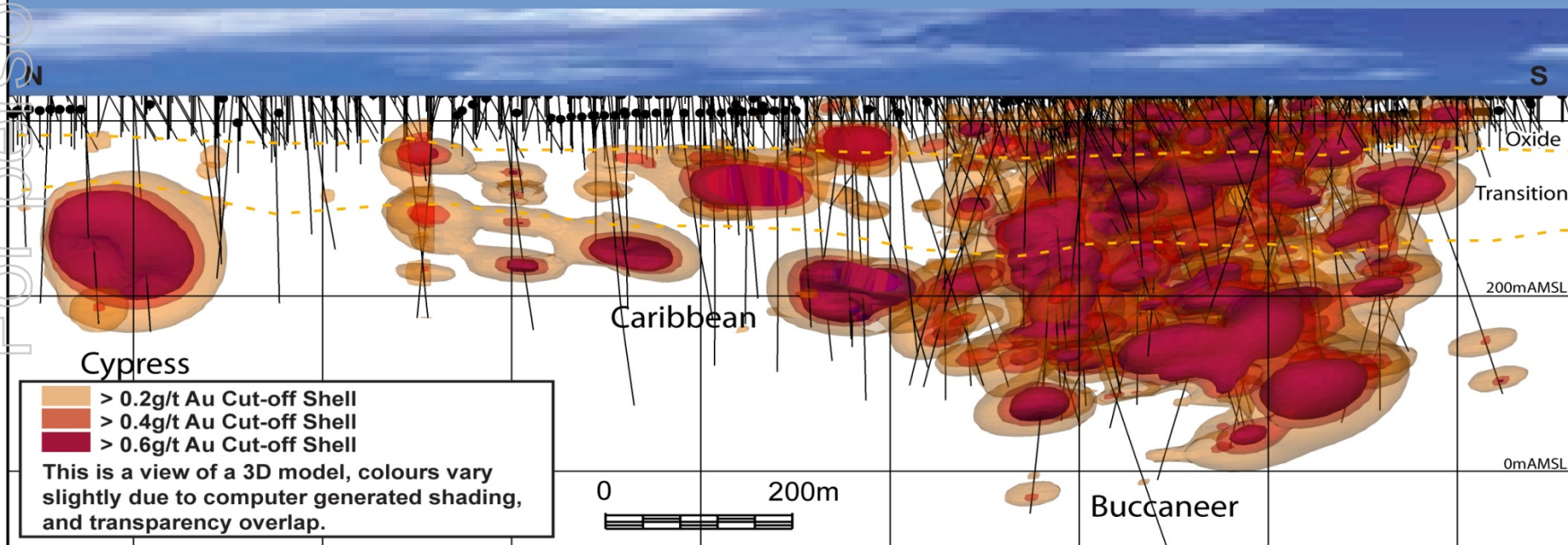
Buccaneer Gold Porphyry – Growth Potential

- Open in several directions.
- Further structural studies planned to redefine continuity of **higher grade >1.5g/t Au.**
- Visible free gold observed** regularly through mineralised sections.
- Further extensional drilling along the Caribbean – Cypress Zone aiming to extend >1.5km of structure not yet tested with **6m @ 20.37g/t** recently hit at Cypress.

Buccaneer Resource (0.2g/t and 0.6g/t cut off)

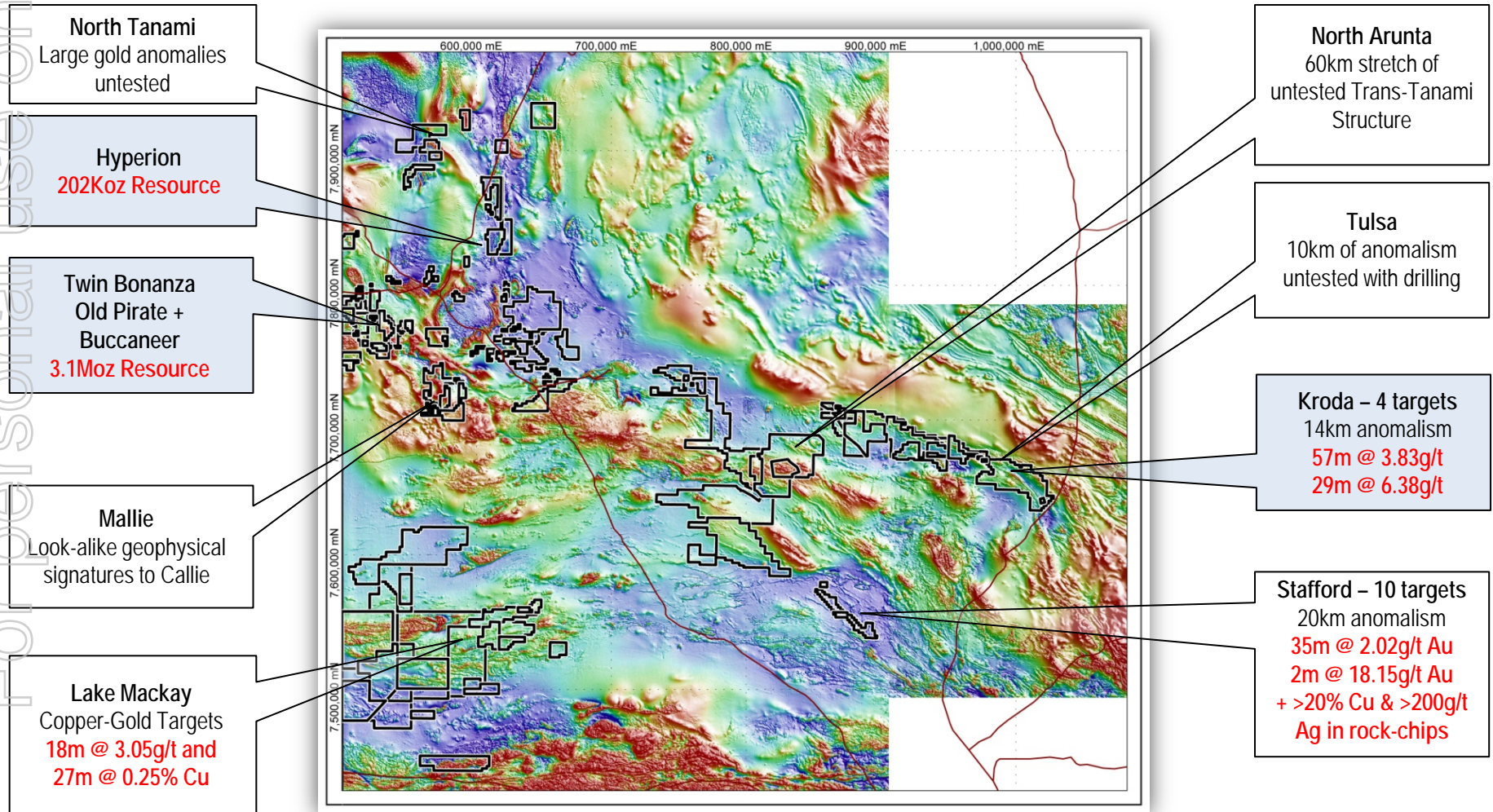
0.2g/t cut off	Tonnes (m)	Gold (g/t)	Ounces (m)
Indicated	34	0.64	0.702
Inferred	93.9	0.65	1.97
Total	127.9	0.65	2.672
0.6g/t cut-off	Tonnes (m)	Gold (g/t)	Ounces (m)
Indicated	12.3	1.04	0.412
Inferred	31.8	1.13	1.154
Total	44.1	1.1	1.566

Buccaneer Porphyry Gold Deposit – Long Section view east



Regional Projects - Overview

A multitude of advanced and high priority exploration targets throughout the Central Desert, NT



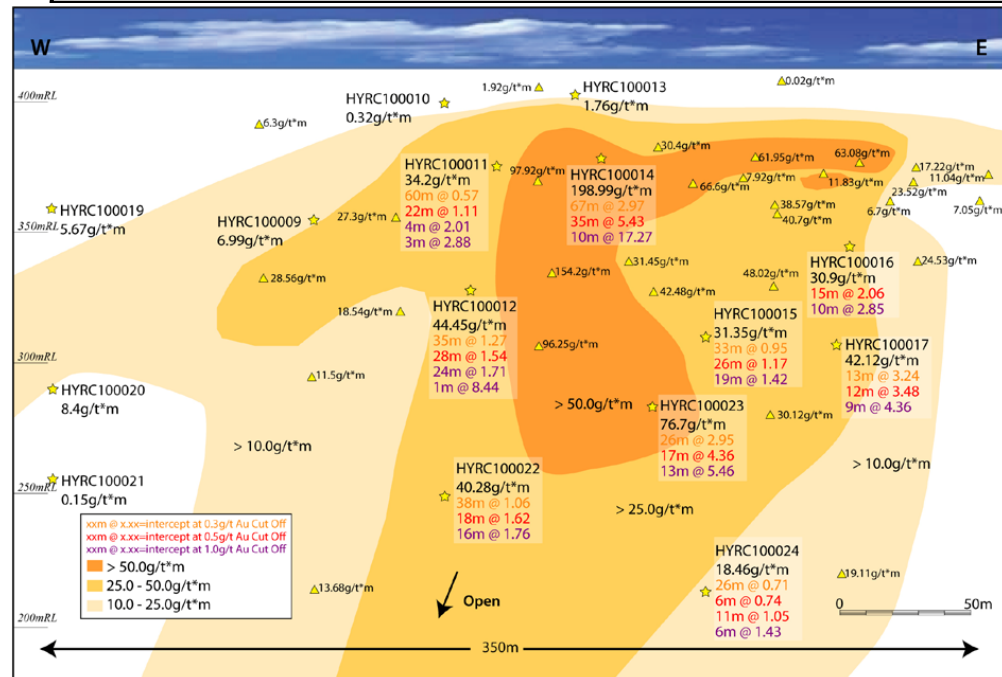
600km

Regional Projects - Hyperion

For personal use only

- 18km from Tanami Gold's Groundrush Deposit.
- Deposit extends from near surface to ~200m depth.
- Hyperion Central has confirmed mineralisation over a 600m strike length.
- Hyperion South has confirmed mineralisation over a 250m strike length.
- Drill results include:
 - 35m @ 5.43g/t gold including:
 - 10m @ 17.27g/t gold.
- Several extensions and other targets to be tested in 2012.

Hyperion Resource utilising 50g/t top-cut			
0.8g/t cut off	Tonnes	Gold (g/t)	Ounces
Hyperion Central	2,209,000	2.06	146,600
Hyperion South	768,000	2.25	55,500
Total	2,977,000	2.11	202,200
2g/t cut-off	Tonnes	Gold (g/t)	Ounces
Hyperion Central	875,000	3.17	89,100
Hyperion South	272,000	4.08	35,700
Total	1,147,000	3.38	124,800



Regional Projects - Kroda

Kroda 3 Discovery

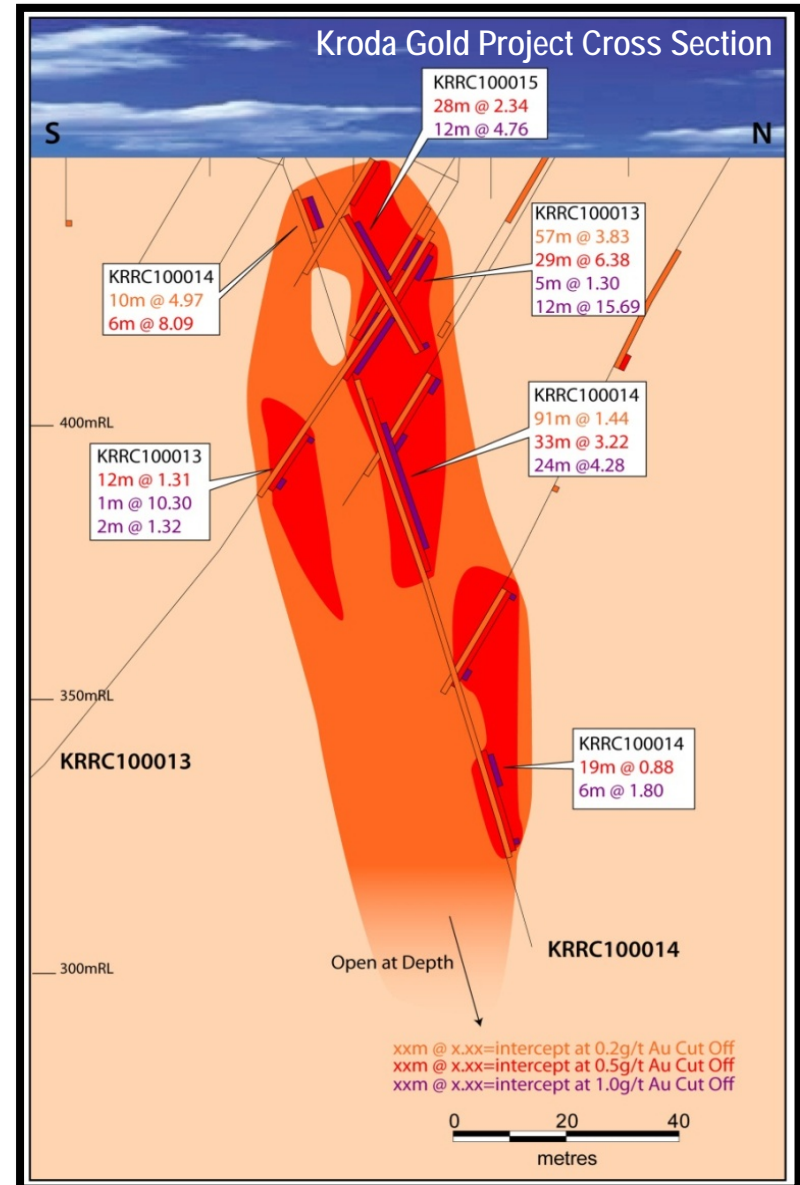
- 400m strike main trend at Kroda 3
- 125m strike high grade breccia pipe 25 – 40m in width
- Confirmed to 200m+ depth

Significant Drill Results

- 57m @ 3.83g/t gold including
 - 29m @ 6.38g/t gold, including
 - 12m @ 15.69g/t gold
- 91m @ 1.44g/t gold including
 - 33m @ 3.22g/t gold including
 - 24m @ 4.28g/t gold

Extensional Gold + base metal potential

- 14 km of surface anomalism around Kroda
- 10km of surface anomalism on nearby Tulsa Trend
- Close to Stuart Highway + Rail + Gas
- Recent airborne EM survey to generate Au + Cu + Ni targets.



Summary

The Company

- ✓ Strong management & passionate exploration team.
- ✓ Strong cash position of \$23M (June 30th, 2012).
- ✓ Exceptional track record of identifying resources.

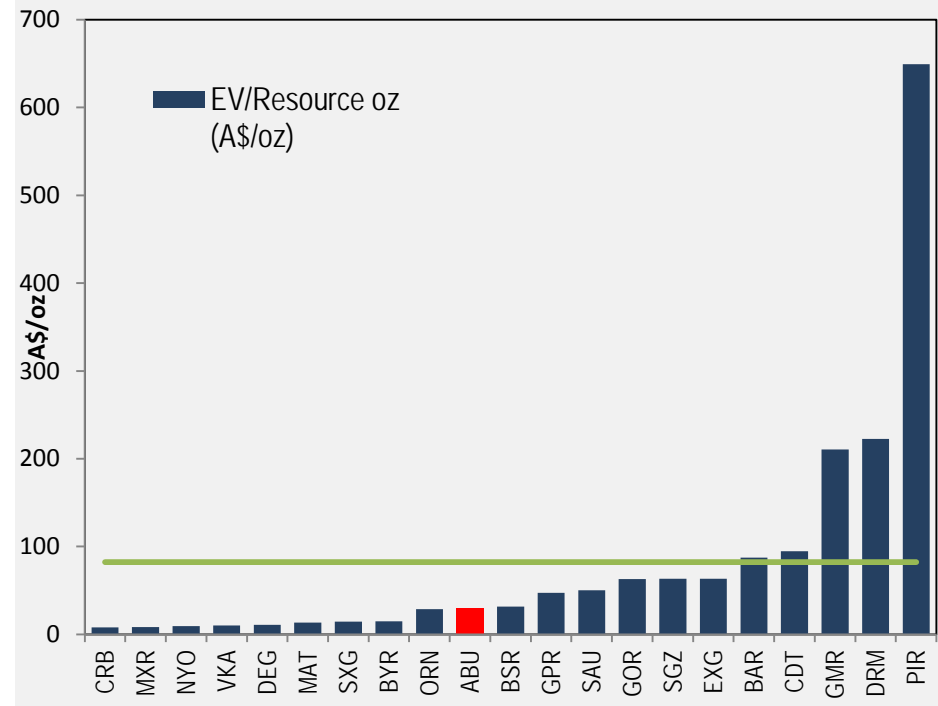
The Assets

- ✓ Five new discoveries and 3.3Moz in resources defined in 2 years of operations.
- ✓ ~60 regional targets across the largest junior gold land holding in the country.
- ✓ Discount on an EV / Resource Ounce basis presents a compelling opportunity for investors.

The Future

- ✓ \$12+ million budget for the 2012 field season.
- ✓ More than 7500m drilled pending assay and drilling on going.
- ✓ Mining studies at Old Pirate with updated scoping study / resource Q3/Q4, 2012 with view trial mining.
- ✓ Potential near term production and cash flow at Old Pirate and long term large scale project at Buccaneer.
- ✓ Exploration running simultaneously at multiple locations providing exceptional optionality to upside of the region.

Explorers EV per Resource Ounce (July 2012)



ABM has delivered on all key milestones and provides investors compelling upside and optionality

Thank You

For Further Information Contact ABM Resources NL

Managing Director – Darren Holden

CFO / Company Secretary – Jutta Zimmermann

Investors Relations Coordinator – Berdine Mastaglia

www.abmresources.com.au

admin@abmresources.com.au

Tel +61 8 9423 9777

For personal use only

Appendix A - Board and Management



Board of Directors

Dr Mike Etheridge

Non-Executive Chairman

Dr Etheridge is a geologist with over 35 years' experience in exploration, mining, consulting and research. Until 2004 he was Chairman of the consulting firm SRK Consulting (Australia), having co-founded its predecessor, Etheridge Henley Williams in 1990. Dr Etheridge is a former board member on Consolidated Minerals and Lihir Gold. Dr Etheridge is an Adjunct Professor at Macquarie University where he has led an industry collaborative resource project on risk and value in mineral exploration.

Mr Darren Holden

Managing Director

Mr Holden is a geologist with over 18 years experience in mining and exploration. Mr Holden has previously held the role of Senior Consultant at Fractal Geoscience and was involved in modelling and targeting on a wide range of deposit styles. Mr Holden was a leading member of the team that won the GoldCorp Challenge in 2001. Prior to ABM, Mr Holden was Vice President Exploration for a Vancouver based junior and oversaw the definition of several deposits including a multi-million ounce gold porphyry in Alaska.

Mr Imants Kins

Non-Executive Director

Mr Kins is an Economist with over 25 years experience specialising in the resource sector. He has a Bachelor of Economics from the University of WA and a Master of Arts (Futures studies) degree from the Curtin University of Technology. Since 1987 Mr Kins has mainly worked as a consultant to the resource sector undertaking projects with exploration and mining companies, investors and brokers.

Graeme Sloan

Non-Executive Director

Mr Sloan is a Mining Engineer with extensive corporate and operational experience both within Australia and overseas and is currently a Non-Executive Director of Orion Gold NL. He has held senior roles with several ASX listed companies, including Managing Director/CEO of Tanami Gold NL, and has been responsible for the successful development, implementation and commissioning of various projects over a range of different commodity types. Mr Sloan is currently the CEO of Herencia Resources PLC.

Andrew Ferguson

Non-Executive Director

Andrew Ferguson is an Executive Director and the Chief Executive Officer of APAC Resources Limited, which is a natural resources investment company listed on Hong Kong Stock Exchange. Mr Ferguson holds a Bachelor of Science Degree in Natural Resource Development and was a mining engineer in Western Australia in the late 90's. In 2003, Mr Ferguson co-founded New City Investment Managers in England. He has a proven track record in fund management and was the former co-fund manager of City Natural Resources High Yield Trust, which was awarded best UK Investment Trust in 2006. He has also worked for CQS LLP (CQS) in Hong Kong as the Chief Investment Officer for New City Investment Managers CQS and a Senior Portfolio Manager for CQS.

Company Officer

Jutta Zimmermann

Chief Financial Officer &
Company Secretary

Ms Zimmermann has over twenty years experience in accounting, taxation and management in both Australia and Germany. She is an accountant with an Australian AQF diploma level and a equivalent Australian bachelor degree level from the Furtwangen Polytechnic in Information Technology and is a member of Chartered Secretaries Australia. Ms Zimmermann holds the position of Chief Financial Officer with the company and was appointed Company Secretary on 17 April 2007.

For personal use only

Appendix B – Resource Statement



Old Pirate Resource Estimation without utilising a top-cut.				Old Pirate Resource Estimation with utilising 300g/t top-cut.			
All Vein Models	Tonnes	Gold (g/t)	Ounces	All Vein Models	Tonnes	Gold (g/t)	Ounces
Indicated	347,000	5.31	59,200	Indicated	347,000	5.25	58,500
Inferred	1,327,000	11.86	505,800	Inferred	1,327,000	8.65	368,900
Total	1,673,000	10.50	565,000	Total	1,673,000	7.95	427,400
High Grade Vein Models Only	Tonnes	Gold (g/t)	Ounces	High Grade Vein Models Only	Tonnes	Gold (g/t)	Ounces
Indicated	132,000	7.74	32,800	Indicated	132,000	7.62	32,200
Inferred	354,000	22.64	257,600	Inferred	354,000	17.52	199,400
Total	486,000	18.60	290,400	Total	486,000	14.84	231,600

Hyperion Gold Project Resource Estimation without top-cut.				Hyperion Gold Project Resource Estimation with 50g/t top-cut.			
0.8g/t cut off	Tonnes	Gold (g/t)	Ounces	0.8g/t cut off	Tonnes	Gold (g/t)	Ounces
Hyperion Central	2,209,000	2.14	152,100	Hyperion Central	2,209,000	2.06	146,600
Hyperion South	768,000	2.71	66,800	Hyperion South	768,000	2.25	55,500
Total	2,977,000	2.29	219,000	Total	2,977,000	2.11	202,200
2g/t cut-off	Tonnes	Gold (g/t)	Ounces	2g/t cut-off	Tonnes	Gold (g/t)	Ounces
Hyperion Central	875,000	3.36	94,400	Hyperion Central	875,000	3.17	89,100
Hyperion South	272,000	5.37	47,000	Hyperion South	272,000	4.08	35,700
Total	1,147,000	3.83	141,400	Total	1,147,000	3.38	124,800

*Note - totals may vary due to rounding. Refer press release 16th April, 2012 for full details.

Appendix B – Resource Statement



For personal use only

Buccaneer Porphyry Gold Deposit Resource Update at varying cut-offs.			
0.2g/t cut off	Million Tonnes	Gold (g/t)	Million Ounces
Indicated	34.0	0.64	0.702
Inferred	93.9	0.65	1.970
Total	127.9	0.65	2.672
0.4g/t cut-off	Million Tonnes	Gold (g/t)	Million Ounces
Indicated	24.2	0.77	0.600
Inferred	64.1	0.80	1.657
Total	88.3	0.80	2.257
0.6g/t cut-off	Million Tonnes	Gold (g/t)	Million Ounces
Indicated	12.3	1.04	0.412
Inferred	31.8	1.13	1.154
Total	44.1	1.10	1.566

*Note - totals may vary due to rounding. Refer press release 16th April, 2012 for full details.

Appendix C – List of ASX Announcements



List of ASX announcements relating to technical results in this presentation.

Please refer for intercept calculation method, resource estimation, assay results and sampling techniques etc.

05/08/2012	High Grade Gold results from the Golden Hind Discovery	30/11/2011	Broadcast - MD talks Gold from the Old Pirate
02/08/2012	Old Pirate High Grade Drill Results 5m @ 52.27g/t gold	29/11/2011	High Grade Old Pirate Phase 2a Trench Results
01/08/2012	High Grade Gold Drill Results at Buccaneer	28/11/2011	Twin Bonanza Drill Results Extending Caribbean to Cypress
16/07/2012	Phase 3 Surface Vein Sampling Extends Old Pirate	24/11/2011	Historic Access Agreement Signed for Lake Mackay Regional
09/07/2012	Phase 2 Surface Sampling on East Side Vein	24/11/2011	Lake Mackay Phase 1 Drill Results
28/06/2012	New Prospect with Coarse Visible Gold at Surface	09/11/2011	Drilling Commences at Hyperion
15/06/2012	New High Grade Vein Uncovered at Old Pirate	24/10/2011	Further Buccaneer Drill Results
14/06/2012	High Grade Gold Drill Results Extend Buccaneer	13/10/2011	Old Pirate Trenching Combined Strike Length 166m@19.17g/t Au
15/05/2012	Old Pirate Stage 1 Scoping Study Results	11/10/2011	Buccaneer Extension 26m @ 2.9g/t within 18m @ 4.05g/t Gold
03/05/2012	2012 Exploration Season Underway	27/09/2011	Drilling at Kroda Confirms Second Discovery Camp in the NT
16/04/2012	3.3 Million Ounces Gold in Resources	12/09/2011	New Discovery at Cypress Prospect with 26m @ 5.53g/t Gold
12/03/2012	Hyperion Drill Results show wide mineralised zones	07/09/2011	Old Pirate Northern Extensions Further High Grade Results
07/03/2012	Latest Results Extend Eastern Contact Zone	02/09/2011	Broadcast - ABM Gold Assays over 400 Grams per Tonne
28/02/2012	Hyperion Best Ever Intercept 35m @ 5.43 g/t Gold	31/08/2011	Old Pirate Northern Extensions High Grade Drill Results
08/02/2012	Old Pirate Trenching Extends to 726 metres @ 24.01g/t Gold	24/08/2011	Drilling Commences at Lake Mackay Copper-Gold Targets
20/01/2012	ABM and Tanami Gold enter Memorandum of Understanding	17/08/2011	Caribbean Zone and Buccaneer Deposit Significantly Extended
20/01/2012	TAM: Tanami Gold NL and ABM enter MOU	10/08/2011	Updated Investor Presentation
19/01/2012	Impressive Drill Results from Buccaneer Porphyry	09/08/2011	Broadcast Spectacular Gold at Old Pirate Northern Extensions
18/01/2012	Cypress Zone Drill Results 8m@7.43g/t Au within 87m@1.13g/t	08/08/2011	Spectacular Gold at Old Pirate Northern Extensions
5/01/2012	Old Pirate Trenching Update - 582m strike @ 23.98g/t Gold	01/08/2011	Further Extensional Buccaneer Drill Results
23/12/2011	BRR -ABM extends high grade trenching results at Old Pirate	18/07/2011	Further Extensions at Buccaneer and New Porphyry Discovery
22/12/2011	Old Pirate Trenching Extends to 427m Strike @ 21.85g/t Gold	04/07/2011	New Sedimentary Hosted Oxide Gold Discovery at Twin Bonanza
5/12/2011	Technical and Corporate Update Presentation	20/06/2011	Drilling Commences at the Kroda Gold Project

Appendix C – List of ASX Announcements



**List of ASX announcements relating to technical results in this presentation.
Please refer for intercept calculation method, resource estimation, assay results and sampling techniques etc.**

17/06/2011 Broadcast -ABM hits New Gold Zone and Extends Mineralisation	13/09/2010 Best Intersection at Buccaneer - 202m grading 1g/t Gold
16/06/2011 Further Success at Buccaneer - Discovery at Caribbean Zone	31/08/2010 Update Old Pirate High Grade Gold Prospect at Twin Bonanza
09/06/2011 First 2011 Drilling Extends Buccaneer	19/08/2010 Buccaneer Porphyry Gold Drill Results Double Vertical Extent
10/05/2011 Updated Investor Presentation	27/07/2010 Bonanza Grades at Old Pirate - 5 metres at 274 g/t Gold
09/05/2011 Exploration Update Twin Bonanza Program Ahead of Schedule	12/07/2010 Drill Results - 35m at 6.35g/t Au inc 8m at 21.78g/t Au
27/04/2011 Extensional Drilling Underway at Buccaneer Western Zone	07/07/2010 Exploration Update - Visible Gold at Old Pirate South
04/04/2011 Metallurgical Tests Reveal High Quality Ore - 99.5% Recovery	15/06/2010 Exploration Update from Twin Bonanza
22/03/2011 Presentation - Twin Bonanza and 1.67 Moz Buccaneer Deposit	24/05/2010 First Drill Results - High Grade Intercept Extends Sabre
21/02/2011 Presentation - 1.67 Moz Gold - And We've Only Just Begun	13/05/2010 Samples Return 20.3% Copper and 271 g/t Silver
21/02/2011 Maiden Resource Estimation for Buccaneer	27/04/2010 ABM Resources Announces the Commencement of Drilling
03/02/2011 Twin Bonanza Gold Camp Expands to 30 Targets	16/04/2010 Presentation - The Big 8
31/01/2011 New Targets at Twin Bonanza Gold Camp	31/03/2010 Newmont Transaction Complete - Prioritising 8 Discoveries
13/01/2011 Buccaneer Porphyry Delivers Impressive Results	16/03/2010 Kroda Gold Project - 6 Metres at 25.9g/t Gold
11/01/2011 Drill Results from the Hyperion Gold Project	09/03/2010 Hyperion Gold Project with 60 m at 2.57 g/t Gold
13/12/2010 Buccaneer Continues To Grow With Step Out Drilling	02/02/2010 The Old Pirate High Grade Gold Project
15/11/2010 2010 Old Pirate Drilling and Screen Fire Assay Program	01/02/2010 Detail on the Twin Bonanza Porphyry Gold Project
04/11/2010 ABM adds second drill rig to NT exploration programs	28/01/2010 Acquisition of Advanced Gold Prospects from Newmont
18/10/2010 Step Out Drilling at Buccaneer Delivers Excellent Intercepts	18/01/2010 Exploration Update for Reynolds Range Project Area
22/09/2010 ABM Continues to Expand Buccaneer Gold Porphyry	07/01/2010 ABM Provides Exploration Update for Lake Mackay Project

For personal use only