



SOVEREIGN GOLD COMPANY LIMITED

Sovereign Gold Company Limited
ACN 145 184 667

Level 2, 131 Macquarie Street
Sydney NSW 2000
Tel: +61 2 9251 7177
Fax: +61 2 9251 7500

Contact

Michael Leu CEO

email: mleu@sovereigngold.com.au

Latest News

www.sovereigngold.com.au

Directors / Officers

John Dawkins AO
Michael Leu
Peter Meers
Jacob Rebek
Qinjing Qiu

ASX Symbol: SOC

Qualifying Statement

The information in this Report that relates to Exploration Information is based on information compiled by Michael Leu who is a member of the Australian Institute of Geoscientists.

Mr Leu is a qualified geologist and is a director of Sovereign Gold Company Limited.

Mr Leu has sufficient experience, which is relevant to the style of mineralisation and type of deposit under consideration and to the activity, which he is undertaking to qualify as a Competent Person as defined in the 2004 Edition of the Australasian Code for Reporting of exploration Results, Mineral Resources and Ore Resources. Mr Leu consents to the inclusion in this announcement of the Exploration Information in the form and context in which it appears.

Targets

The potential quantity and grade of exploration targets is conceptual in nature. There has been insufficient exploration to define a Mineral Resource and it is uncertain if further exploration will result in the determination of a Mineral Resource.

ASX Release
14th February 2012

Twin holes at Martins Shaft improves sampling methods - higher gold results obtained

Sovereign Gold Company Limited (ASX: **SOC**) (**Sovereign**) has completed twin Diamond and Reverse Circulation (**RC**) drill holes at **Martins Shaft** designed to compare the sample integrity of the drill methods.

The results of the diamond twin hole indicate diamond core provides samples that give a more accurate measure of the free gold content and hence higher grades.

The overall gold content of the diamond drill hole was 30.3% higher than the RC hole (3.05 vs 2.34 grams/tonne gold).

- Diamond Drill Hole SGRDD014: 15 metres @ 3.05 grams/tonne gold downhole¹ including 1 metre @ 15.40 grams/tonne gold.
- Reverse Circulation Drill Hole SGRR005: 10 metres @ 2.34 grams/tonne gold downhole¹ including 1 metre @ 12.75 grams per tonne gold.

Further results

Diamond Drill Hole SGRDD014:

- 15 metres @ 3.05 grams/tonne gold from 19-34 metres downhole¹

Including:

- 8 metres @ 5.40grams/tonne gold from 21-29 metres downhole¹
- 4 metres @ 7.77 grams/tonne gold from 21-25metres downhole¹
- 1 metre @ 8.60 grams/tonne gold from 21-22 metres downhole¹
- 1 metre @ 15.40 grams/tonne gold from 24-25 metres downhole¹

Reverse Circulation Drill Hole SGRR005:

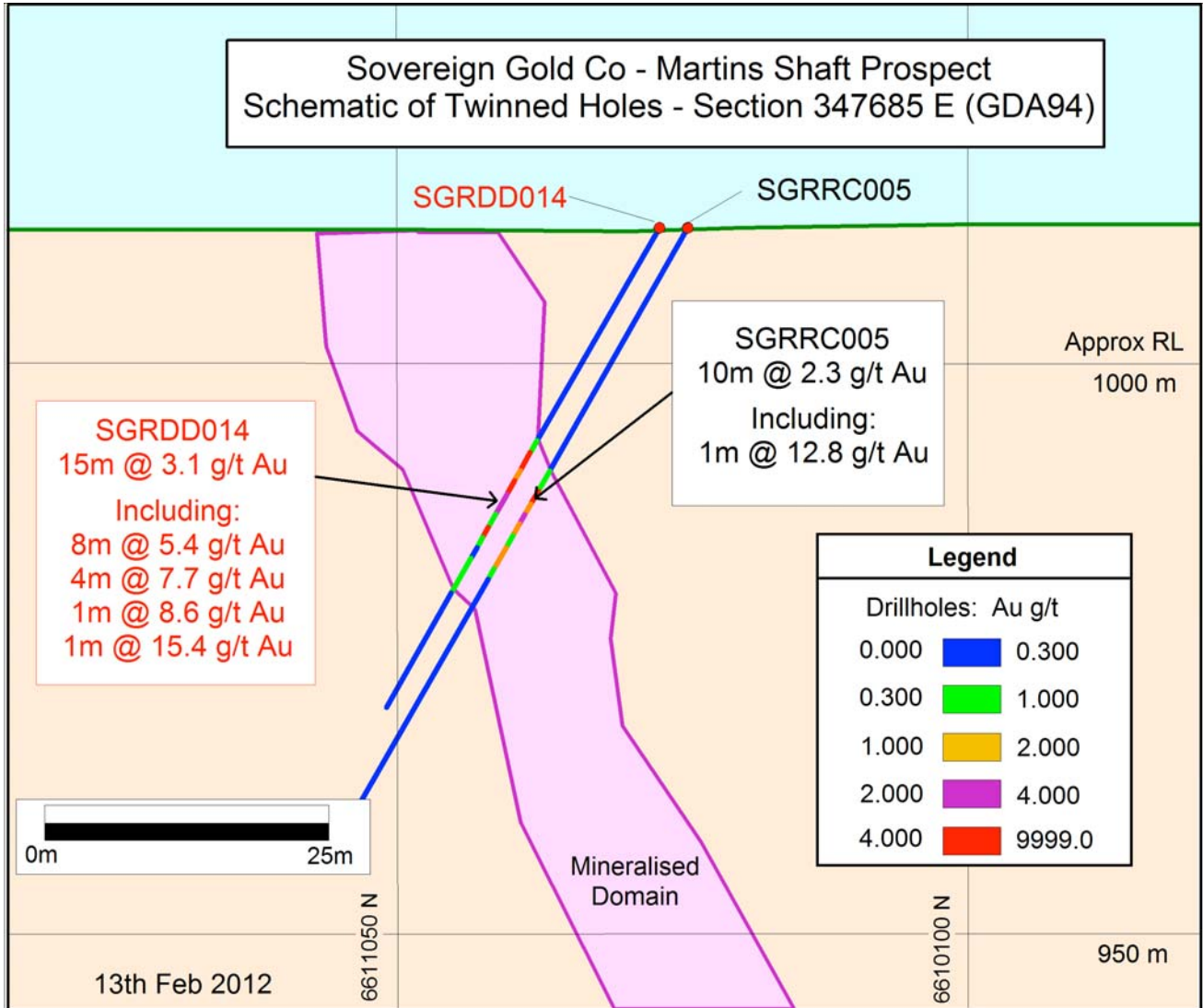
- 10 metres @ 2.34 grams/tonne gold from 23-33 metres downhole¹

Including:

- 1 metre @ 12.75 grams per tonne gold from 25-26 metres downhole¹

The exact cause of the variation in gold grades between diamond drill and reverse circulation drill holes is being investigated. The hypothesis is that it is a result of the presence of free gold within the ore body. It appears the reverse circulation chip samples are under reporting gold grades. However no definite conclusions can be drawn from the current limited data set. Duplicate sampling and sampling of splits from +75 micron and the -75 micron pulp fractions are being undertaken to provide a statistical comparison of gold grades reported for both drilling methods.

¹ Downhole length, true width not known. All drill intersections are stated as downhole lengths, true width not yet determined.



Martins Shaft. Cross-section of intersections of Twinned Holes SGRDD014 and SGRRC005

The gold mineralisation at Martins Shaft is very significant as this style of mineralisation was predicted from the application of Sovereign Gold's Intrusion-Related Gold System Model. The mineralisation comprises sheeted veins and disseminated gold mineralisation within a felsic dyke and confirms the potential of the large IRGS to host several primary hard rock gold deposits. Sovereign's geologists have now identified several new areas of gold mineralisation that will be drilled in first half of 2012. A detailed report on areas selected for the next phase of drilling is being finalised for release. Some targets consist of at surface gold-bearing alteration structures in granite over 250 metres long. Such targets have the potential to host Dargues Reef-style ore bodies (Majors Creek, 337,000 ounces Au extending to 480 metres vertically - limit of drilling, Cortona Resources Limited). Other targets comprise sheeted veins in felsic dykes similar to Martins Shaft.



SGRDD014, Core from 24.7-24.8 metres (**15.40 grams/tonne gold** from 24-25 metres downhole¹). Blebs of disseminated grey sulphide (stibnite, antimony sulphide) in phyllic altered felsic dyke (centimetre scale). 24-25m downhole¹ contained 0.694% Antimony per tonne, indicating potential for antimony credits.



SGRDD014, Piece of core from 24.9 metres (**15.40 grams/tonne gold** from 24-25 metres downhole¹). Exposed vein exhibiting disseminated sulphides (stibnite, cubic pyrite and arsenopyrite) in sericite-quartz altered felsic dyke, (scale millimetre divisions).



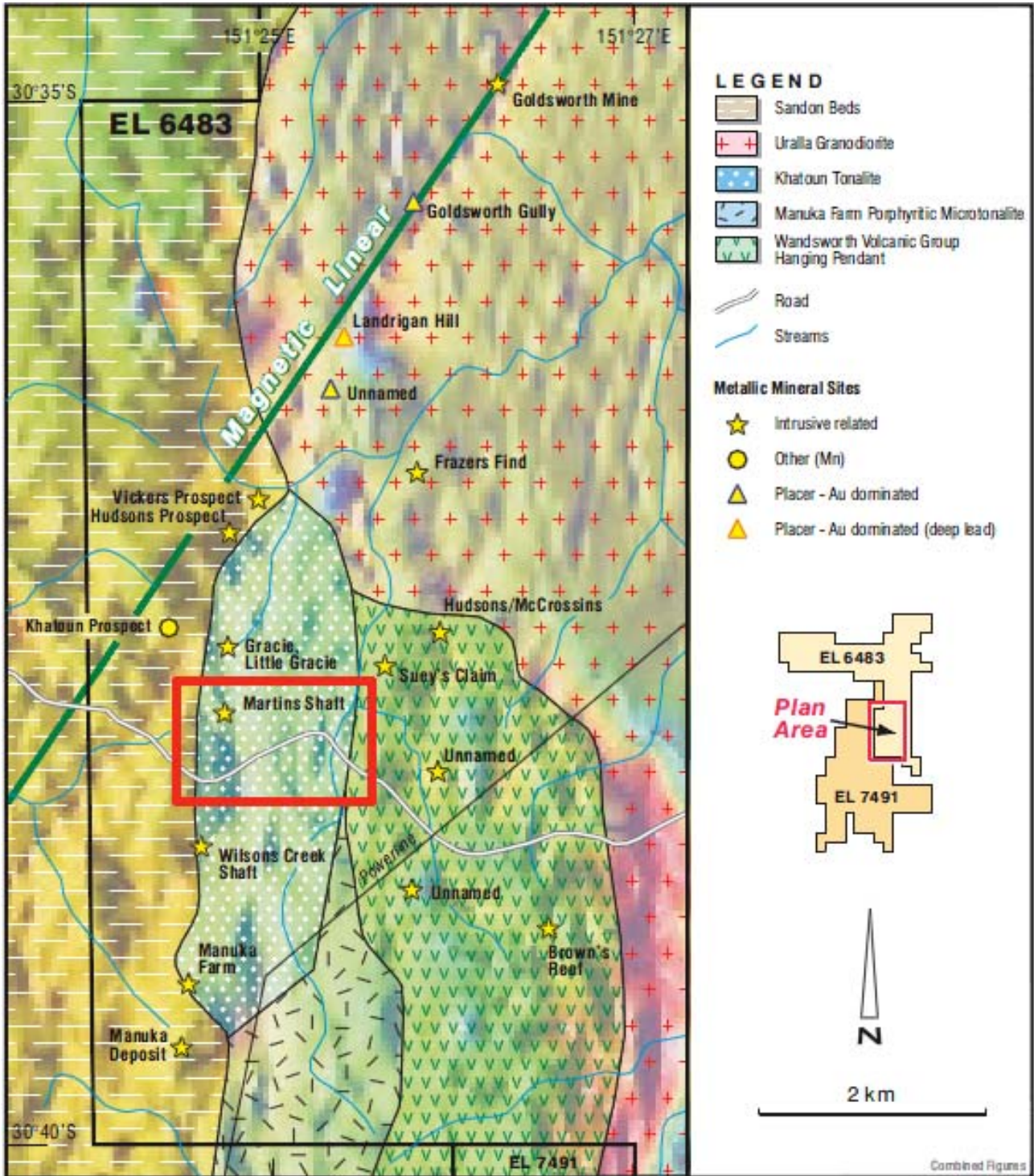
		SGRRC005	SGRDD014
Au-AA25			
Metres		Au -Gold	
From	To	ppm	ppm
16	17	0.01	0.12
17	18	0.01	0.27
18	19	0.06	0.17
19	20	0.02	0.28
20	21	0.01	0.37
21	22	0.06	8.59
22	23	0.06	5.37
23	24	0.3	1.29
24	25	0.39	15.4
25	26	12.75	2.51
26	27	1.45	2.6
27	28	2.14	0.59
28	29	1.71	6.82
29	30	0.97	0.44
30	31	1.35	0.14
31	32	1.55	0.62
32	33	0.74	0.37
33	34	0.21	0.39
34	35	0.11	0.13
35	36	0.07	0.22

Table1: Au ppm and downhole¹ depths: SGRRC005 and SGRDD014 (mineralised intersections are highlighted)
(ALS Certificate of Analysis BR1101723) ; (ALS Certificate of Analysis BR11173320)

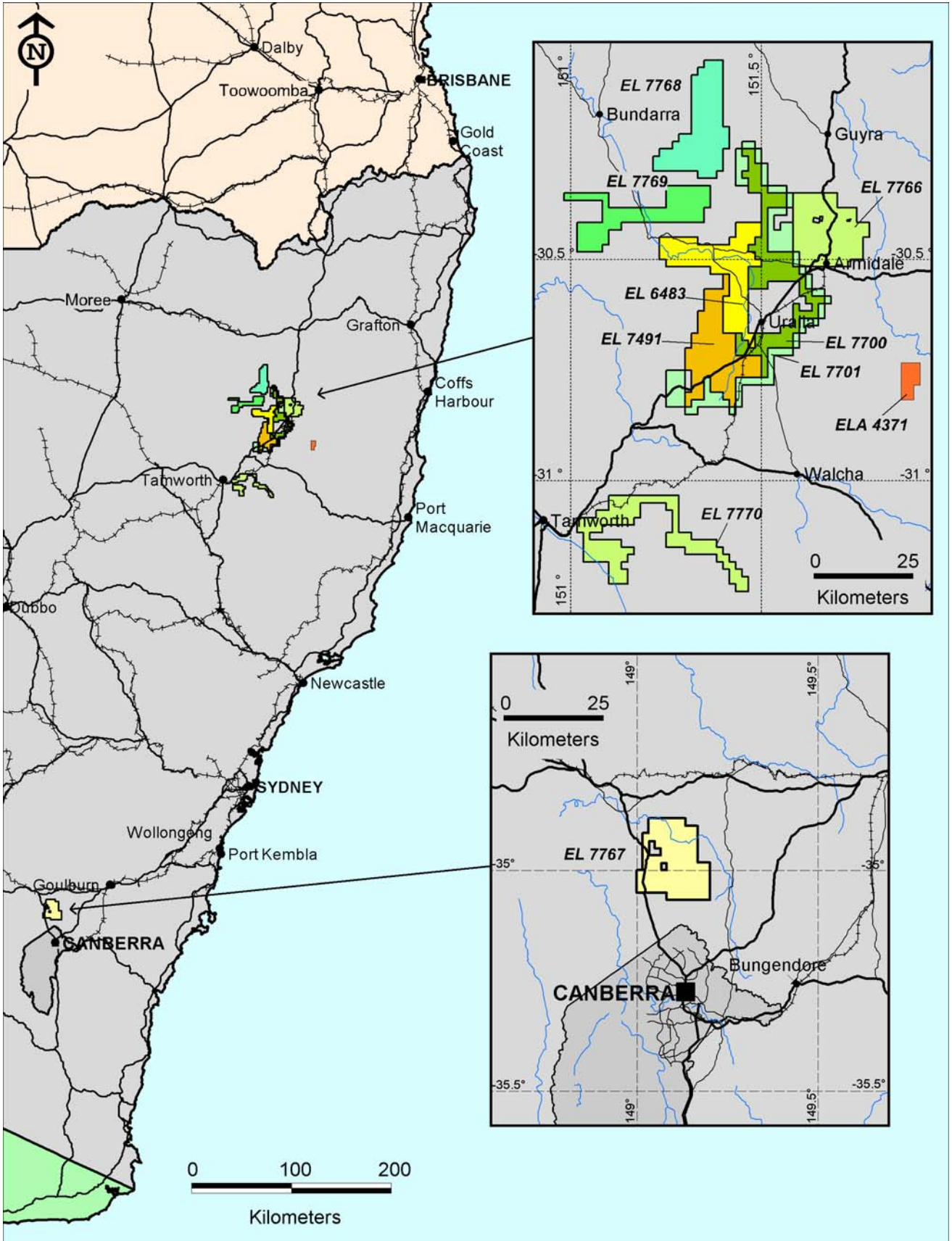
For further information please contact:

Henry Kinstlinger
Investor Relations

Telephone: +61 2 9251 7177



Martins Shaft - Location



Sovereign Gold Tenements