

More high-grade results show strong potential of Perseverance North discovery

HIGHLIGHTS

- Perseverance North follow up program delivers high grade results including:
 - 4.4m @ 13.3g/t Au
 - 3.9m @ 3.2g/t Au
- Results show potential for Perseverance North to host a substantial resource
- Surface drilling of 2nd Perseverance EM target further highlights the potential with an intersection of:
 - 2.0m @ 7.4g/t Au

Gold producer Focus Minerals (ASX: **FML**) is pleased to announce excellent **high-grade gold intersections** from an underground drilling program designed to target the recently discovered Perseverance North Ore Body

In late 2009 a number of EM targets, including Perseverance North, were identified during a down-hole EM program carried out at the Tindals Project within the Coolgardie Gold Project.

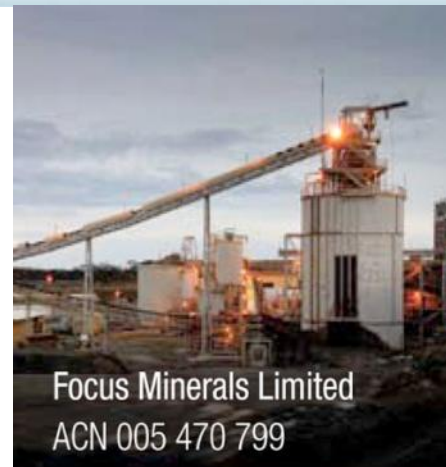
Drilling into one of the targets in May 2010 (see ASX release dated 7th July 2010) highlighted Perseverance style mineralisation to the north of the main Perseverance ore body. This drilling delineated a target of over 140 metres in strike and 200 metres in dip with intersections including (Figure 1):

- 4.2m @ 3.6g/t Au
- 5.2m @ 3.6g/t Au; and
- 4.6m @ 5.9g/t Au

The follow up program into the target area has intersected further mineralisation, with results from the first two holes of an 8 hole program delivering significant high grade mineralisation including:

- 4.4m @ 13.3g/t Au
- 3.9m @ 3.2g/t Au

The drilling intersected quartz-sulphide structures of similar appearance to those seen in the main Perseverance ore body. The program was designed to confirm and infill the strike, depth, continuity and the tenor of the mineralisation within the target zone.



Focus Minerals Limited
ACN 005 470 799

Australian Securities Exchange

Code: **FML**

Frankfurt Stock Exchange

Code: **FZA**

Board of Directors

Mr Donald Taig
Executive Chairman

Mr Chris Hendricks
Non-Executive Director

Mr Phil Lockyer
Non-Executive Director

Senior Management

Mr Campbell Baird
Chief Executive Officer

Mr Peter Williams
Chief Operating Officer

Mr Jon Grygorcewicz
Company Secretary

Mr Brad Valiukas
Principal Mining Engineer

Dr Garry Adams
Exploration Manager

Mr Peter Cash
Investor Relations Manager

Mr Chuck McCormick
Business Development Manager

Share Registry

Computershare Investor Services Pty Ltd

Investor Enquiries

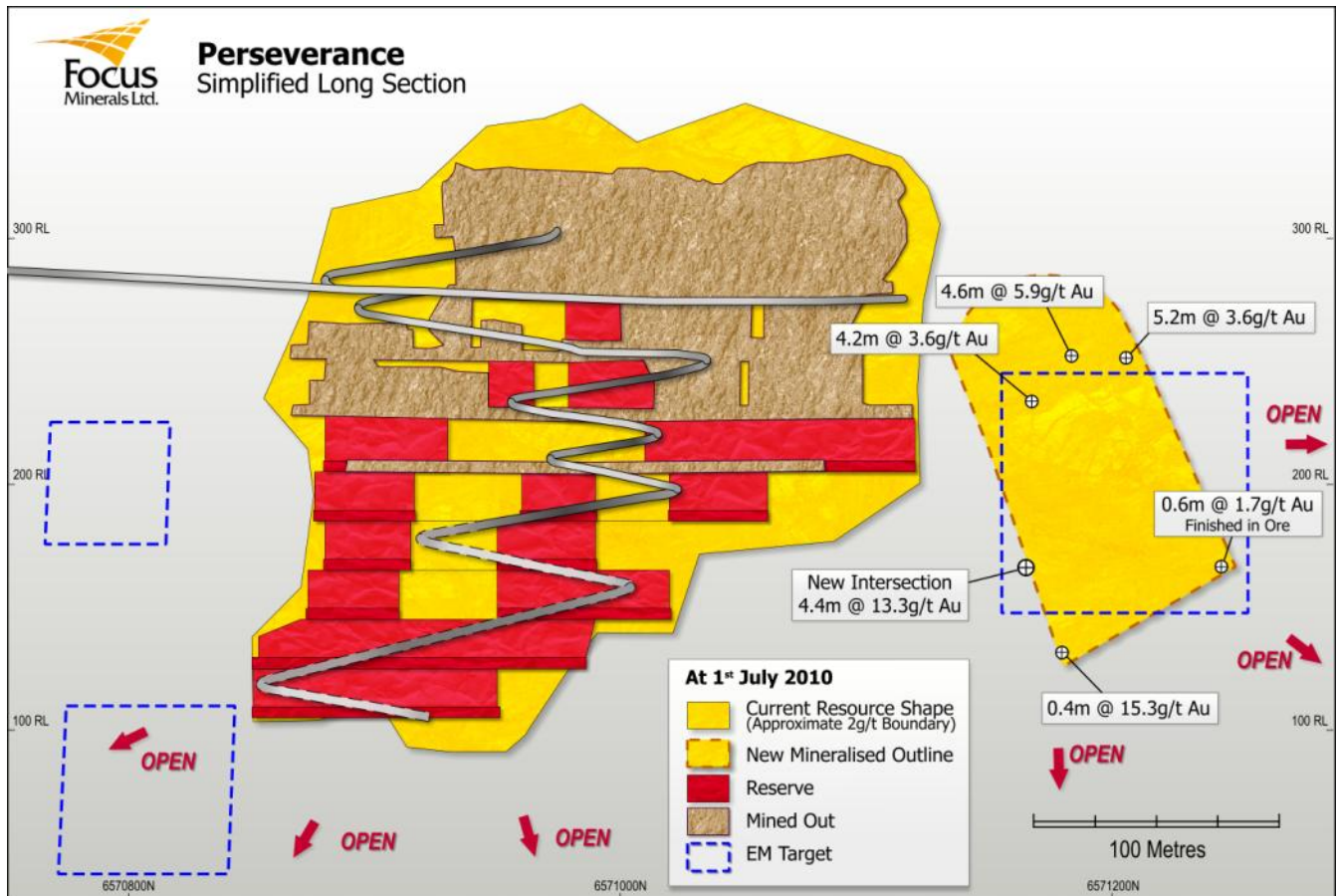
1300 557 010



The 4.4m @ 13.3g/t intersection vertically intersected the midpoint of current drilling extremities and provides growing confidence that Perseverance North will host a substantial resource. The zone remains open at depth and along strike.

The Perseverance North ore body can be easily accessed with only 75 metres of horizontal development required from the existing 205 level at Perseverance. Detailed mine planning will begin once all results from the remaining 6 holes are received.

Figure 1 – Simplified Perseverance Long Section



Surface EM Target Drilling

The use of DHEM continues to provide reliable target identification and classification with surface drilling into a second identified EM target also delivering high grade intercepts. Both holes drilled into this second target have returned anomalous gold intersections providing further confidence that substantial ore bodies will be discovered in Coolgardie with the aid of EM technology.

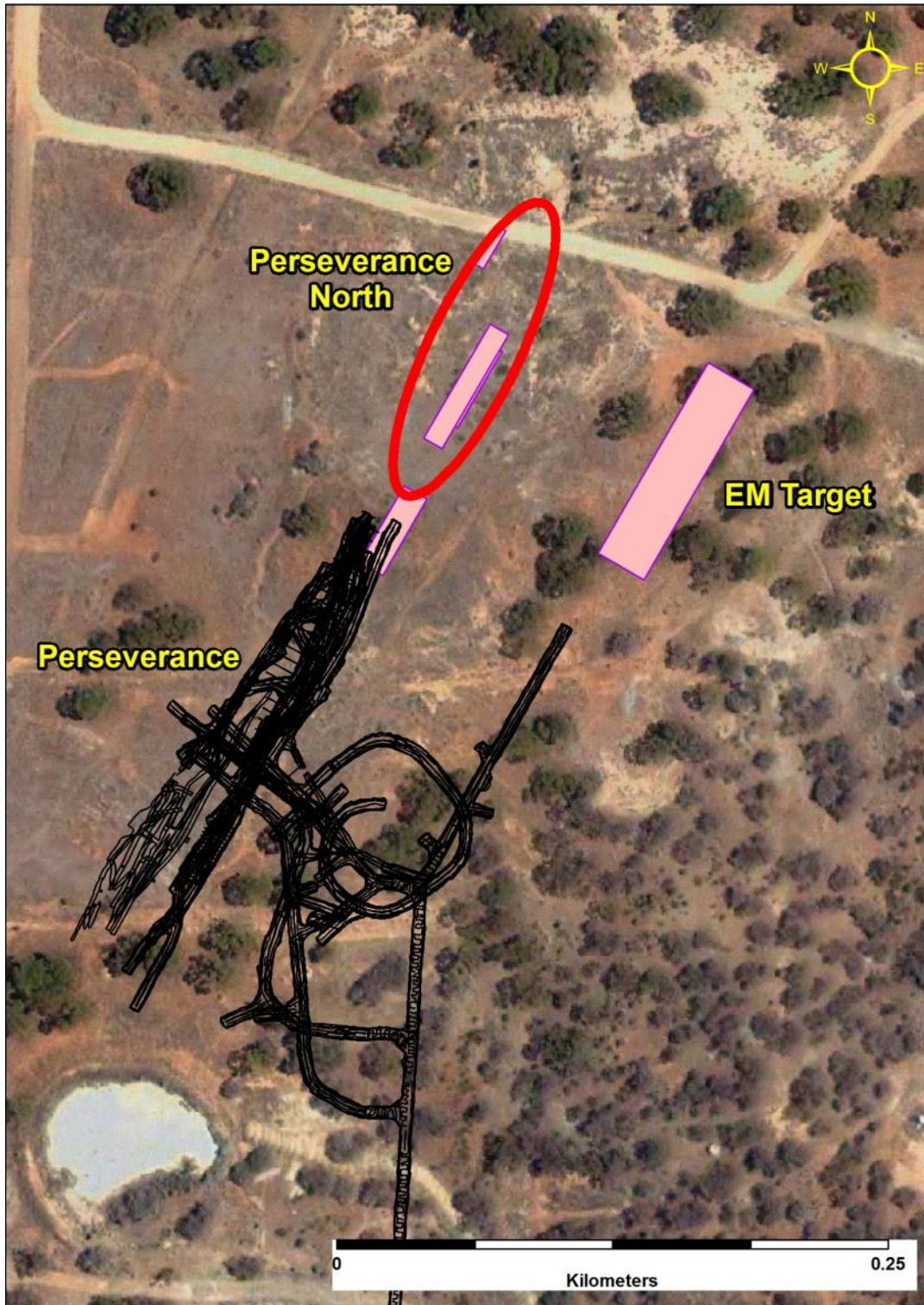
Two holes with assays received to date are;

- **2m @ 7.42g/t from 173 metres;** and
- **1m @ 1.4g/t from 134 metres**

This immediately highlights another potential high grade zone that is also within easy access of the current underground workings (Figure 2).



Figure 2 – Plan View showing Perseverance EM Targets





Summary

Focus Chief Executive Officer Campbell Baird said the latest results highlighted the enormous potential of the recently discovered Perseverance North deposit,

“The results make us increasingly confident that Perseverance North will make a major contribution to the growth of the Tindals Project,” Mr Baird said. “Importantly, it is just 150m from surface, 75m from existing development and mining at Perseverance is already at 300m deep so the upside is substantial.

“It also provides further evidence that there is much more gold to be found at Tindals in the form of Perseverance repeats as we continue to target a host of EM conductors.”

ENDS

Released by:

Paul Armstrong

Read Corporate

Telephone: (+61-8) 9388-1474

www.readcorporate.com.au

On behalf of:

Campbell Baird, CEO

Focus Minerals Ltd

Telephone: (+61-8) 9215-7888

Web: www.focusminerals.com.au

COMPETENT PERSON'S STATEMENT

The information in this report that relates to Exploration Results and Minerals Resources is based on information compiled by Dr Garry Adams who is a member of the Australasian Institute of Mining and Metallurgy. Dr Adams is a full time employee of Focus Minerals and has sufficient experience that is relevant to the style of mineralisation and type of deposit under consideration and to the activity which he is undertaking to qualify as a Competent Person as defined in the 2004 Edition of the “Australasian Code for Reporting of Exploration Results, Mineral Resources and Ore Reserves”. Dr Adams consents to the inclusion in the report of the matters based on the information in the form and content in which it appears.

BACKGROUND INFORMATION – FOCUS MINERALS LTD

Focus Minerals Ltd (ASX: **FML**) is an Australian-based exploration and development group whose focus is to become a significant gold and nickel producer in the Coolgardie-Kalgoorlie-Widgiemooltha region of Western Australia.

Focus Minerals is the largest landholder in the Coolgardie Gold Belt located in Western Australia, 560km east of Perth and 35km west of the ‘Super Pit’ in Kalgoorlie-Boulder. More than 2.6 million ounces of gold has been produced from the Coolgardie gold belt alone since 1892. Focus holds the mineral rights to more than 210sq km of tenements including an extensive inventory of Measured, Indicated and Inferred gold resources as well as the 1.2mtpa Three Mile Hill processing plant.

**Table 1** Significant results from drilling program to date**Perseverance North**

Hole ID	North	East	From	To	m	Au g/t
PEXP0040	6570975	325764	102.38	106.27	3.89	3.15
			51.23	52	0.77	1.94
			75.02	76	0.98	4.27
			140.46	141.4	0.94	1.78
			143.97	144.94	0.97	5.91
PEXP0042	6570975	325764	146.12	150.51	4.39	13.33
PEXP0043	6570975	325764	42.1	42.89	0.79	2.09
2nd EM Target						
			133	134	1	1.39
TNDCD0282	6570956	325891	184	185	1	1.06
			76	77	1	1.1
TNDCD0283	6570948	325904	173	175	2	7.42