

ASX Release
20 October 2009

ASX code: MEI

METEORIC RESOURCES

t 08 9485 2836
f 08 9485 2840
e info@meteoric.com.au
w meteoric.com.au

2nd floor 16 Ord Street
west perth wa 6005
po box 963 west perth
western australia 6872

METEORIC RESOURCES NL abn 64 107 985 651

NEW GOLD ANOMALY AT MT WEBB

Analysis of geochemical samples from tenements held by the Meteoric Resources-Beadell Resources joint venture (MEI ASX release of 31 August 2009) has identified a potentially significant 7km-long gold anomaly in the southern part of Meteoric's Webb project in the west Arunta region of WA shown in Figure 1.

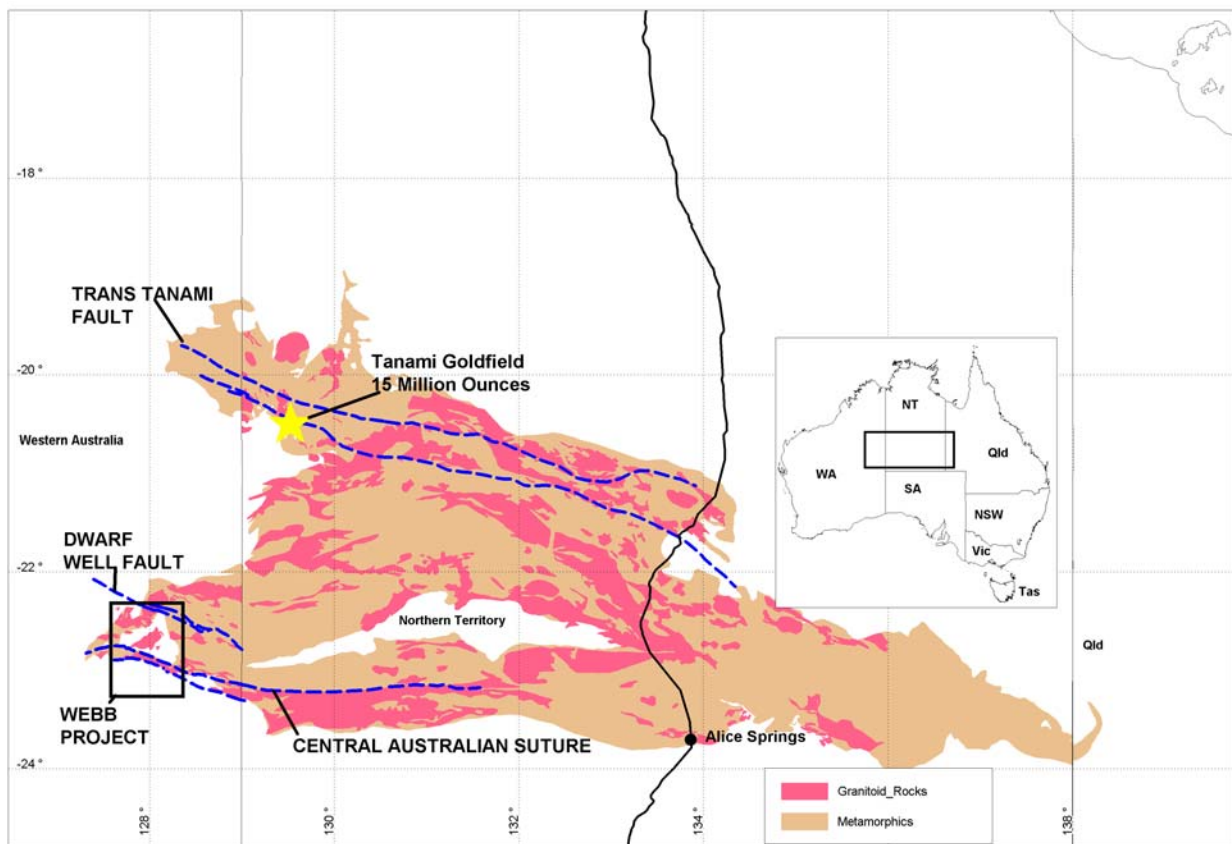


Figure 1
Location Plan

Under the terms of the joint venture Meteoric may earn up to a 70% interest in four granted exploration licences by expenditure of \$800,000 over a five year period and completing certain drilling obligations. Beadell Resources carried out reconnaissance lag and soil sampling on 1km centres on several target areas and subsequent to the formation of the joint venture Meteoric analysed the soil fractions of this sampling.

Analysis results indicate a broad zone of elevated gold values, the strongest part of which extends for some 7km with a peak gold value of 4.9ppb compared to a background of less than 1ppb, as shown in Figure 2.

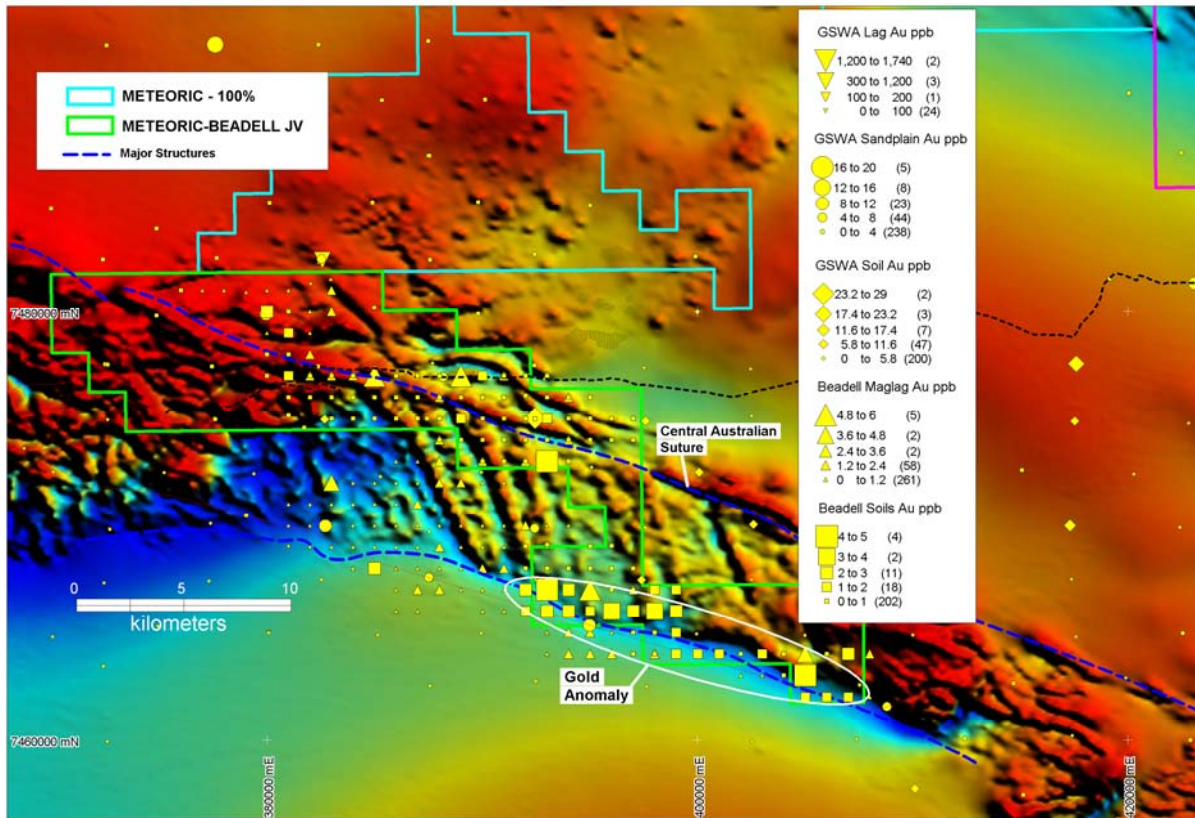


Figure 2
Mt Webb Area Gold Geochemistry on Aeromagnetics

Weakly elevated copper and arsenic occur within the anomalous gold zone, which coincides with the southern margin of a major WNW-trending structural corridor termed the Central Australian Suture.

A broad zone of weak copper anomalism, with elevated but less coherent gold values, has also been identified over a 15km strike length along the northern margin of this structural corridor. Previous wide-spaced exploration drilling (7 RC holes) by BHP in the late 1990's in this area intersected hematite alteration but did not report any mineralisation. Significantly however, Ashburton Minerals (ASX:ATN) has recently reported intersecting copper mineralisation in drilling at its Pokali prospect about 25km ESE of the Mt Webb gold anomaly, as shown in Figure 3.

The Mt Webb gold anomaly is situated about 60km south of Meteoric's main gold target near Dwarf Well where mapping, sampling and drilling is being planned as shown in Figure 3. This major gold anomaly at Dwarf Well also appears to be associated with a WNW-trending structural trend, now termed the Dwarf Well Fault. Interestingly, both the Central Australian Suture and Dwarf Well Fault appear to parallel the Trans Tanami Fault which is associated with multi-million ounce gold deposits in the Tanami goldfield (see Figure 1).

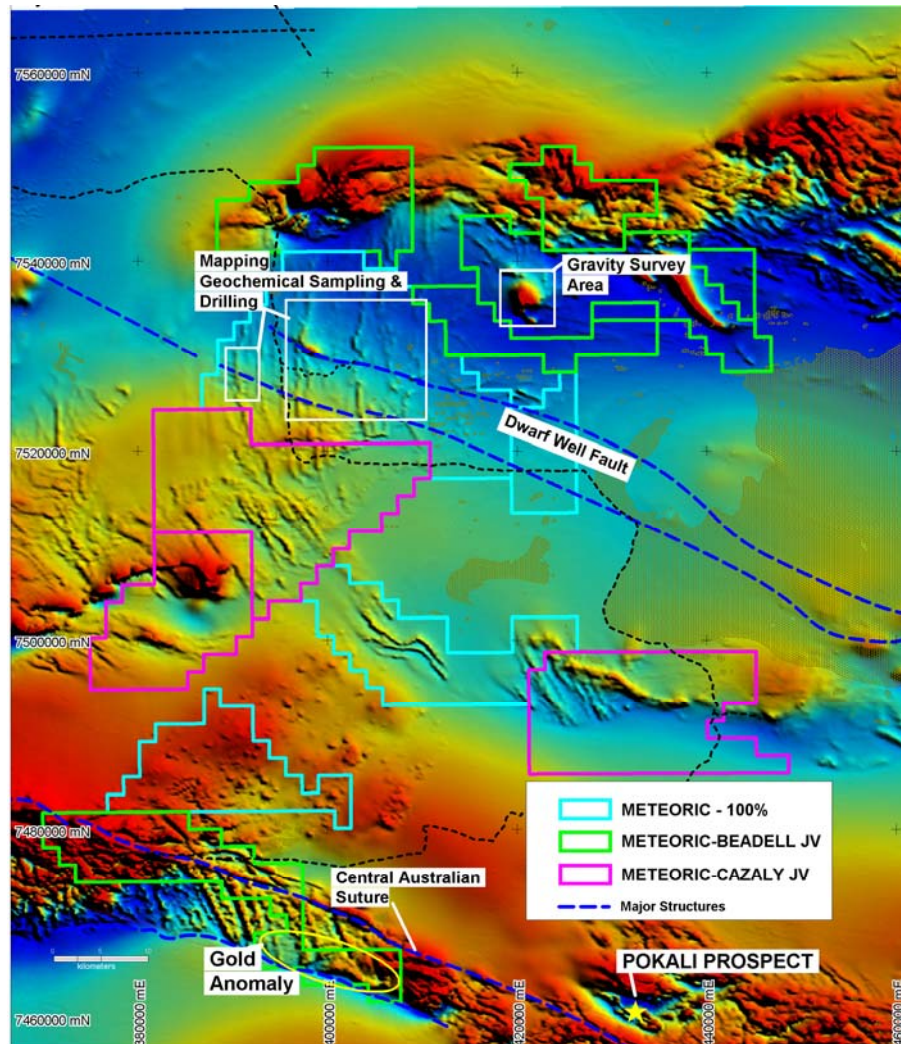


Figure 3
Webb Project Aeromagnetics and Tenure

Meteoric is planning further geochemical sampling and, subject to the necessary permitting, scout drilling of the new gold target in this under-explored part of the west Arunta region.

For more information on the company visit www.meteoric.com.au

Please direct enquiries to:

Roger Thomson
Managing Director
Phone (08) 9485 2836
Mob 0419 969 183

George Sakalidis
Executive Director – Exploration
Phone (08) 9485 2836
Mob 0411 640 337

The information in this report that relates to exploration is based on information compiled or reviewed by Roger Thomson BSc, ARSM, MAusIMM, who is a Member of the Australian Institute of Geoscientists. Roger Thomson is a Director of Meteoric Resources NL. Roger Thomson has sufficient experience which is relevant to the style of mineralisation and type of deposit under consideration and to the activity which he is undertaking to qualify as a Competent Person as defined in the 2004 edition of the 'Australasian Code of Reporting of Exploration Results, Mineral Resources and Ore Reserves'. Roger Thomson consents to the inclusion of this information in the form and context in which it appears in this report